

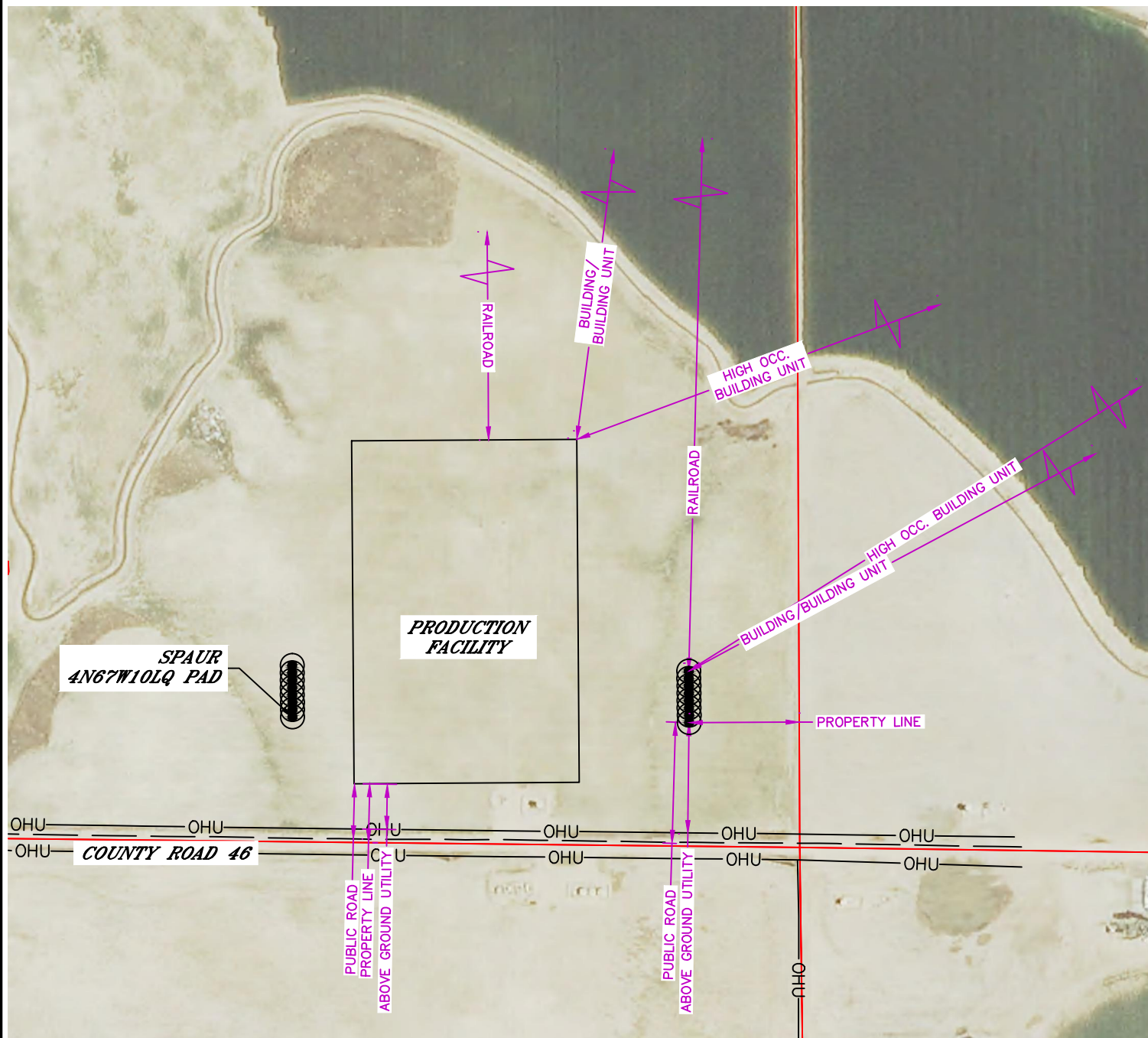


Lat40°, Inc. 6250 W. 10th St, Unit 2 Greeley, CO 970-515-5294

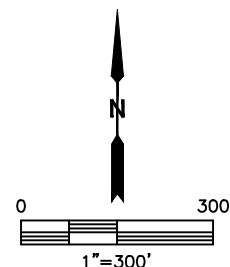
CULTURAL ITEMS MAP

SPAUR 4N67W10LQ PAD

SECTION: 10
TOWNSHIP: 4N
RANGE: 67W
6TH P.M.
WELD COUNTY, CO



MEASURED FROM THE NEAREST	EDGE OF PRODUCTION FACILITY	PROPOSED WELL
BUILDING	±1472' NE	±1771' NE
BUILDING UNIT	±1703' NE	±1771' NE
HIGH OCCUPANCY BUILDING UNIT	±2561' NE	±2566' NE
DESIGNATED OUTSIDE ACTIVITY AREA	5280'+	5280'+
PUBLIC ROAD (COUNTY ROAD 19)	±113' S	±245' S
ABOVE GROUND UTILITY	±92' S	±225' S
RAILROAD	±4508' N	±4975' N
PROPERTY LINE	±121' S	±225' E



DATE: 5/19/2015
PROJECT#: 2014159