

**ANADARKO PETROLEUM CORP - EBUS
DO NOT MAIL - PO BOX 4995
THE WOODLANDS, Texas**

Pettinger 3N-18HZ

Majors 42

Post Job Summary **Cement Surface Casing**

Date Prepared: 12/11/2013
Version: 1

Service Supervisor: LAVALLEY, LARRY

Submitted by: GROVES, COREY

HALLIBURTON

Wellbore Geometry

Job Tubulars					MD		Shoe Joint Length ft
Type	Description	Size in	ID in	Wt lbm/ft	Top ft	Bottom ft	
Casing	9 5/8" Surface Casing	9.63	8.921	36.00	0.00	1,186.00	44.00
Open Hole Section	13 1/2" Open Hole Section		13.500		0.00	1,196.00	0.00

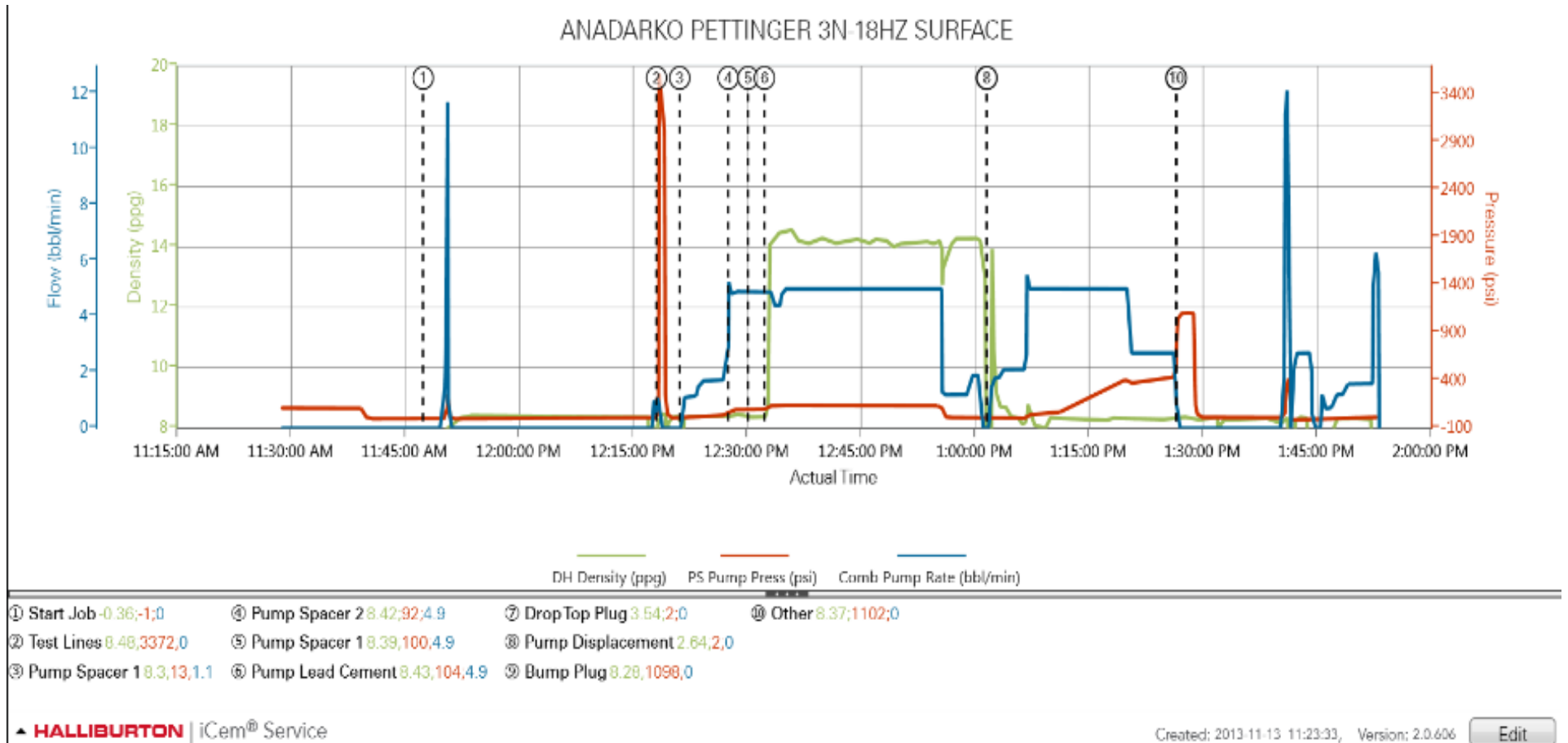
HALLIBURTON

Pumping Schedule

Stage /Plug #	Fluid #	Fluid Type	Fluid Name	Surface Density lbm/gal	Avg Rate bbl/min	Surface Volume	Downhole Volume
1	1	Spacer	Fresh Water Spacer	8.33	4.50	10.0 bbl	10.0 bbl
1	2	Spacer	Mud Flush	8.40	4.50	12.0 bbl	12.0 bbl
1	3	Cement Slurry	SwiftCem B2	14.20	4.50	427.0 sacks	427.0 sacks

HALLIBURTON

Data Acquisition



HALLIBURTON

Service Supervisor Reports

Job Log

Date/Time	Chart #	Activity Code	Pump Rate	Cum Vol	Pressure (psig)	Comments
11/13/2013 06:00		Call Out				CREW CALLED AT 06:00 AM
11/13/2013 11:00		Arrive at Location from Service Center				
11/13/2013 11:05		Assessment Of Location Safety Meeting				HAZARD HUNT ON LOCATION
11/13/2013 12:00		Safety Meeting - Pre Job				
11/13/2013 12:15		Start Job				
11/13/2013 12:18		Test Lines			3372.0	FRESH WATER WITH NO ADDITIVES
11/13/2013 12:21		Pump Spacer 2	5	10	92.0	FRESH WATER WITH NO ADDITIVES
11/13/2013 12:27		Pump Spacer 1	5	12	92.0	FRESH WATER WITH MUDFLUSH III ADDED
11/13/2013 12:30		Pump Spacer 2	5	10	100.0	FRESH WATER WITH NO ADDITIVES
11/13/2013 12:32		Pump Lead Cement	14	116	104.0	427 SKS SWIFTCCEM B2 MIXED @ 14.2 PPG YIELD 1.53 FT3/FT AND 7.63 GAL/SK. VERIFIED BY PRESSURIZED SCALES
11/13/2013 13:00		Shutdown				
11/13/2013 13:01		Drop Top Plug				HWE TOP PLUG PRELOADED. WASHED ON TOP OF PLUG
11/13/2013 13:02		Pump Displacement	5	88	447.0	FRESH WATER WITH NO ADDITIVES. CAUGHT CEMENT @ 27 BBLS AWAY AND SPACER RETURNED TO SURFACE @ 12 BBLS AWAY AND 15 BBLS CEMENT BACK TO SURFACE
11/13/2013 13:26		Bump Plug	3		1102.0	CALCULATED PRESSURE TO LAND WAS 212 AND PRESSURE TO LIFT WAS 238 PSI
11/13/2013 13:26		Other				FLOATS HELD GOT .5 BBLS BACK
11/13/2013 13:30		End Job				HELD SAFETY MEETING TO RIG DOWN AND DEPART LOCATION

The Road to Excellence Starts with Safety

Sold To #: 300466	Ship To #: 3117352	Quote #:	Sales Order #: 900880026
Customer: ANADARKO PETROLEUM CORP - EBUS		Customer Rep: PORTER, BOB	
Well Name: Pettinger		Well #: 3N-18HZ	API/UWI #: 05-123-38023
Field: WATTENBERG	City (SAP): BRIGHTON	County/Parish: Weld	State: Colorado
Lat: N 40.045 deg. OR N 40 deg. 2 min. 41.608 secs.		Long: W 104.712 deg. OR W -105 deg. 17 min. 15.907 secs.	
Contractor: Majors		Rig/Platform Name/Num: Majors42	
Job Purpose: Cement Surface Casing			
Well Type: Development Well		Job Type: Cement Surface Casing	
Sales Person: GREGORY, JON		Srvc Supervisor: LAVALLEY, LARRY	MBU ID Emp #: 419296

Job Personnel

HES Emp Name	Exp Hrs	Emp #	HES Emp Name	Exp Hrs	Emp #	HES Emp Name	Exp Hrs	Emp #
CORONADO, EDI	0.0	123456	LAVALLEY, LARRY P	0.0	419296	NESBITT, ROY Iverson	0.0	537416

Equipment

HES Unit #	Distance-1 way	HES Unit #	Distance-1 way	HES Unit #	Distance-1 way	HES Unit #	Distance-1 way
10972458	5 mile	11019275	5 mile	11488570C	5 mile	11518549	5 mile

Job Hours

Date	On Location Hours	Operating Hours	Date	On Location Hours	Operating Hours	Date	On Location Hours	Operating Hours
TOTAL			Total is the sum of each column separately					

Job

Job Times

Formation Name					Date	Time	Time Zone
Formation Depth (MD)	Top		Bottom		Called Out	13 - Nov - 2013	06:00 MST
Form Type	BHST				On Location	13 - Nov - 2013	11:00 MST
Job depth MD	1196. ft		Job Depth TVD	1196. ft	Job Started	13 - Nov - 2013	12:15 MST
Water Depth			Wk Ht Above Floor	6. ft	Job Completed	13 - Nov - 2013	13:30 MST
Perforation Depth (MD)	From		To		Departed Loc	13 - Nov - 2013	14:30 MST

Well Data

Description	New / Used	Max pressure psig	Size in	ID in	Weight lbm/ft	Thread	Grade	Top MD ft	Bottom MD ft	Top TVD ft	Bottom TVD ft
13 1/2" Open Hole Section				13.5				.	1196.		
9 5/8" Surface Casing	Unknown		9.625	8.921	36.		J-55	.	1186.		

Sales/Rental/3rd Party (HES)

Description	Qty	Qty uom	Depth	Supplier
CMT CASING EQUIPMENT BOM	1	JOB		
MILEAGE FOR CEMENTING CREW,ZI	20	MI		
ZI FUEL SURCHG-CARS/PICKUPS<1 1/2TON	20	MI		
KIT,HALL WELD-A	1	EA		
CNTRLZR, 9 5/8"x13 3/4',#500-0963-1375	9	EA		
Description	Qty	Qty uom	Depth	Supplier

BASKET - CEMENT - 9-5/8 CSG X 12-1/4										1	EA		
PLUG,CMTG,TOP,9 5/8,HWE,8.16 MIN/9.06 MA										1	EA		
COLLAR-STOP-9 5/8"-FRICTION-HINGED										2	EA		
Tools and Accessories													
Type	Size	Qty	Make	Depth	Type	Size	Qty	Make	Depth	Type	Size	Qty	Make
Guide Shoe					Packer					Top Plug			
Float Shoe					Bridge Plug					Bottom Plug			
Float Collar					Retainer					SSR plug set			
Insert Float										Plug Container			
Stage Tool										Centralizers			
Miscellaneous Materials													
Gelling Agt			Conc		Surfactant			Conc		Acid Type		Qty	Conc %
Treatment Fld			Conc		Inhibitor			Conc		Sand Type		Size	Qty
Fluid Data													
Stage/Plug #: 1													
Fluid #	Stage Type	Fluid Name				Qty	Qty uom	Mixing Density lbm/gal	Yield ft3/sk	Mix Fluid Gal/sk	Rate bbl/min	Total Mix Fluid Gal/sk	
1	Fresh Water Spacer					10.00	bbl	8.33					
2	Mud Flush					12.00	bbl	8.4					
3.5 lbm/bbl		MUD FLUSH III, 40 LB SACK (101633304)											
42 gal/bbl		MUD FLUSH III - SBM (528788)											
3	SwiftCem B2	SWIFTCM (TM) SYSTEM (452990)				427.0	sacks	14.2	1.53	7.63		7.63	
7.63 Gal		FRESH WATER											
Calculated Values		Pressures		Volumes									
Displacement		Shut In: Instant		Lost Returns		Cement Slurry		Pad					
Top Of Cement		5 Min		Cement Returns		Actual Displacement		Treatment					
Frac Gradient		15 Min		Spacers		Load and Breakdown		Total Job					
Rates													
Circulating		Mixing		Displacement		Avg. Job							
Cement Left In Pipe		Amount	44 ft	Reason	Shoe Joint								
Frac Ring # 1 @	ID	Frac ring # 2 @	ID	Frac Ring # 3 @	ID	Frac Ring # 4 @	ID						
The Information Stated Herein Is Correct					Customer Representative Signature								

