



Kerr-McGee Oil & Gas Onshore LP
1099 18th Street, Suite 1800
Denver, Colorado 80202
720-929-6000 Fax 720-929-7000

August 7, 2014

Mr. Chris Canfield
Environmental Protection Specialist
Colorado Oil and Gas Conservation Commission
1120 Lincoln Street, Suite 801
Denver, Colorado 80203

**Re: No Further Action Status Request
1415 Corporation Gas Unit #1 Tank Battery
COGCC Remediation No. 4313
API# 05-123-07622
SWSW 14-T2N-R67W**

Dear Mr. Canfield:

Kerr-McGee Oil and Gas Onshore LP (Kerr-McGee) is submitting this report as an update to the Form 27 that was submitted on August 25, 2008 and the Form 27 Update Letter Report that was submitted on May 23, 2013 for the 1415 Corporation GU #1 tank battery (Site). We are requesting a No Further Action (NFA) status for this Site.

Based on discussions between Kerr-McGee and the Colorado Oil and Gas Conservation Commission (COGCC), assessment activities were undertaken by Kerr-McGee to determine the magnitude and extent of potential petroleum hydrocarbon impacts to subsurface soil or groundwater resulting from historical operation of the Site by the previous operator. LT Environmental, Inc. (LTE) was contracted by Kerr-McGee to perform a limited subsurface investigation at the Site in April 2008. The findings of the limited subsurface investigation were presented to the COGCC in the August 2008 Form 27 and are briefly summarized below.

On April 9, 2008, two soil borings (SB01 and SB02) were advanced and continuously sampled using a truck-mounted direct push rig. The soil borings were advanced at locations deemed most likely to encounter any potential impacts associated with the tank battery. One soil sample was collected from each soil boring (above the water table) from the soil interval exhibiting the highest photo-ionization detector (PID) headspace reading. The soil samples were submitted for Total Petroleum Hydrocarbon (TPH) analysis by Environmental Protection Agency (EPA) Method 8015. The TPH concentrations in soil samples SB01@7-8' and SB02@7-8' exceeded the COGCC 1,000 milligrams per kilogram (mg/kg) sensitive area allowable level that was in effect prior to April 1, 2009, at concentrations of 8,300 mg/kg and 3,200 mg/kg, respectively. Soil borings SB01 and SB02 were completed as groundwater monitoring wells MW01 and MW02, respectively.

Monitoring wells MW01 and MW02 were first sampled in May 2008 for benzene, toluene, ethylbenzene, and total xylenes (BTEX) analysis by EPA Method 8260B. BTEX concentrations in MW01 and MW02 exceeded the Colorado Groundwater Quality Standards (CGWQS) during the May 2008 sampling event. Groundwater monitoring continued on a quarterly basis while landowner access was negotiated in order to complete soil excavation activities and additional monitoring well installation.

Upon landowner approval, excavation of petroleum hydrocarbon impacted source area soil was conducted between October 31 and November 8, 2011. Confirmation soil samples were collected from the excavation sidewalls for TPH analysis by EPA Methods 8015 and 8260B and BTEX analysis by EPA Method 8260B. The soil sample analytical results confirmed that TPH and BTEX concentrations were below the COGCC Table 910-1 allowable levels at the extent of the excavation.

Groundwater was encountered in the excavation at approximately 10 feet below ground surface (bgs). One excavation groundwater sample (GW01) was collected from the excavation on October 31, 2011 and submitted for BTEX analysis by EPA Method 8260B. The benzene concentration in groundwater sample GW01 exceeded the CGWQS at a concentration of 84 micrograms per liter ($\mu\text{g/L}$). Based on the groundwater analytical results, ten gallons of MicroBlaze[®] microbial solution were applied to the groundwater and exposed smear zone prior to backfilling the excavation. The excavation area was restored to its pre-release grade and the tank battery was relocated to the southeast of its former location. Monitoring wells MW01 and MW02 were destroyed during the excavation activities. The excavation details were presented to the COGCC in the May 2013 Form 27 Update report.

In order to assess the extent and magnitude of the residual dissolved-phase groundwater impacts, five groundwater monitoring wells (MW01R, MW02R, MW03, MW04, and MW05) were installed at the Site in October 2012. Quarterly groundwater monitoring resumed on January 15, 2013. The benzene concentration in source area well MW01, exceeded the CGWQS during the January 2013 monitoring event. BTEX concentrations in monitoring wells MW02R, MW03, MW04, and MW05 were below the CGWQS during the January 2013 monitoring event. Based on the groundwater analytical results, wells MW03 through MW05 were designated as point of compliance wells. Groundwater monitoring continued on a quarterly basis. A Site Map showing the general Site layout, excavation footprint, and monitoring well locations is provided as Figure 1.

On November 14, 2013, groundwater monitoring wells MW01R through MW05 were surveyed. The survey data and water level measurements were used to determine the groundwater flow direction at the Site. The resulting groundwater elevation data confirmed the groundwater flow direction is to the northeast. The relative groundwater elevations for each quarterly monitoring event are summarized in Table 1. A groundwater elevation contour map is provided as Figure 2.

Mr. Chris Canfield
August 7, 2014
Page 3 of 3

As of the July 2014 quarterly monitoring event, BTEX concentrations in all five monitoring wells have remained below the CGWQS for four or more consecutive quarterly monitoring events. The groundwater analytical results are summarized in Table 1 and the laboratory analytical reports are attached.

Remedial actions employed at the Site included excavation of the source area and application of the MicroBlaze[®] groundwater amendment to the open excavation. Based on these remedial actions and groundwater analytical results showing BTEX concentrations below the CGWQS for four or more consecutive quarterly monitoring events, Kerr-McGee is requesting NFA status for this Site.

Feel free to contact me at 970-336-3500 if you have any questions regarding this information.

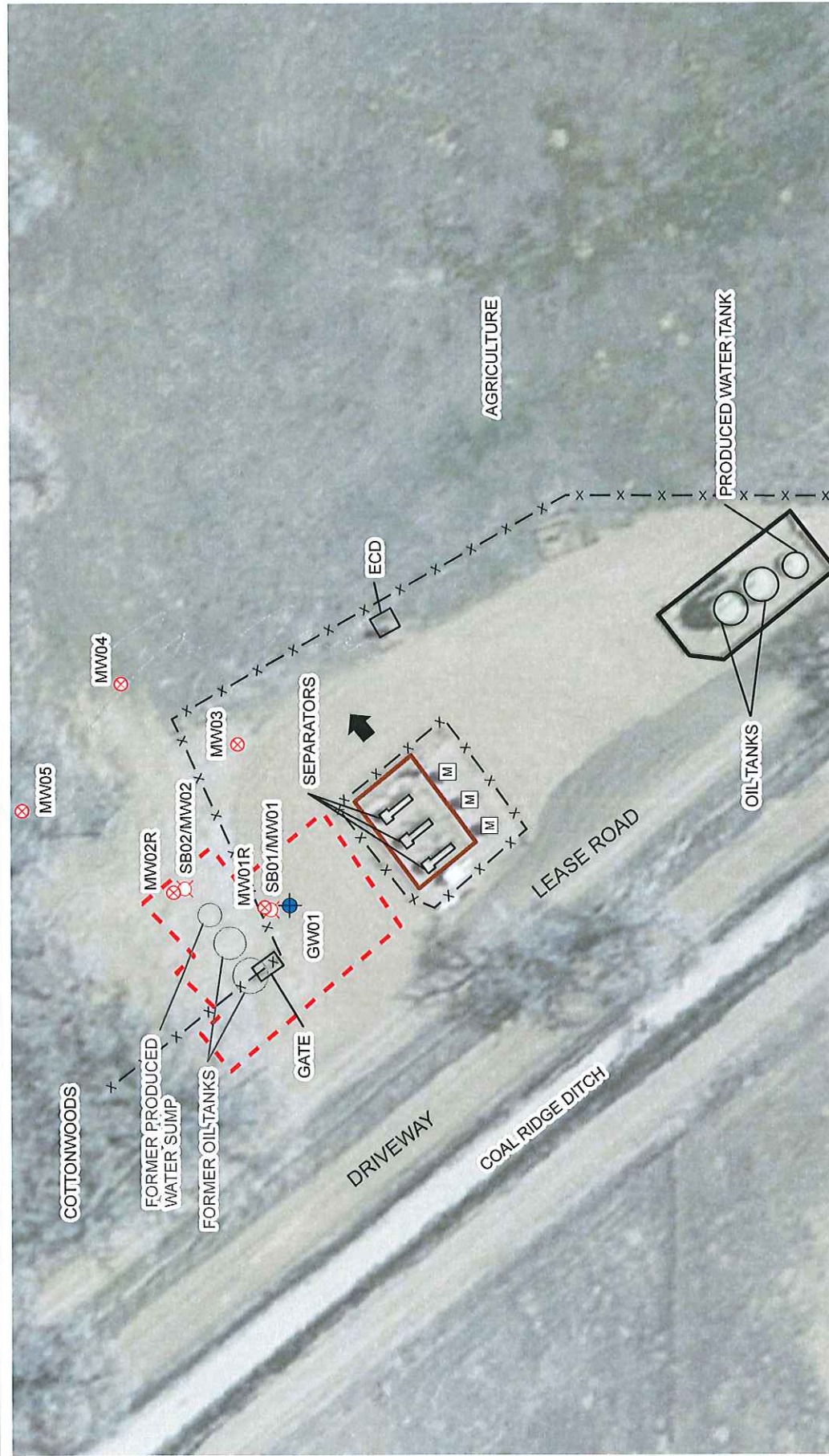
Sincerely,

Kerr-McGee Oil & Gas Onshore LP



Phillip Hamlin
Senior HSE Representative

Attachments



LEGEND

- ⊗ MONITORING WELL
- ⊗ DESTROYED MONITORING WELL
- + GROUNDWATER SAMPLE
- M METER HOUSE
- SURVEYED GROUNDWATER FLOW DIRECTION
- x — x FENCE
- EXCAVATION EXTENT
- DIRT BERM
- METAL BERM
- ECD: EMISSION CONTROL DEVICE

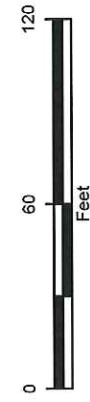


FIGURE 1
SITE MAP

1415 CORPORATION GAS UNIT #1
SWSW SEC 14-T2N-R67W
WELD COUNTY, COLORADO
KERR-MCGEE OIL & GAS ONSHORE LP



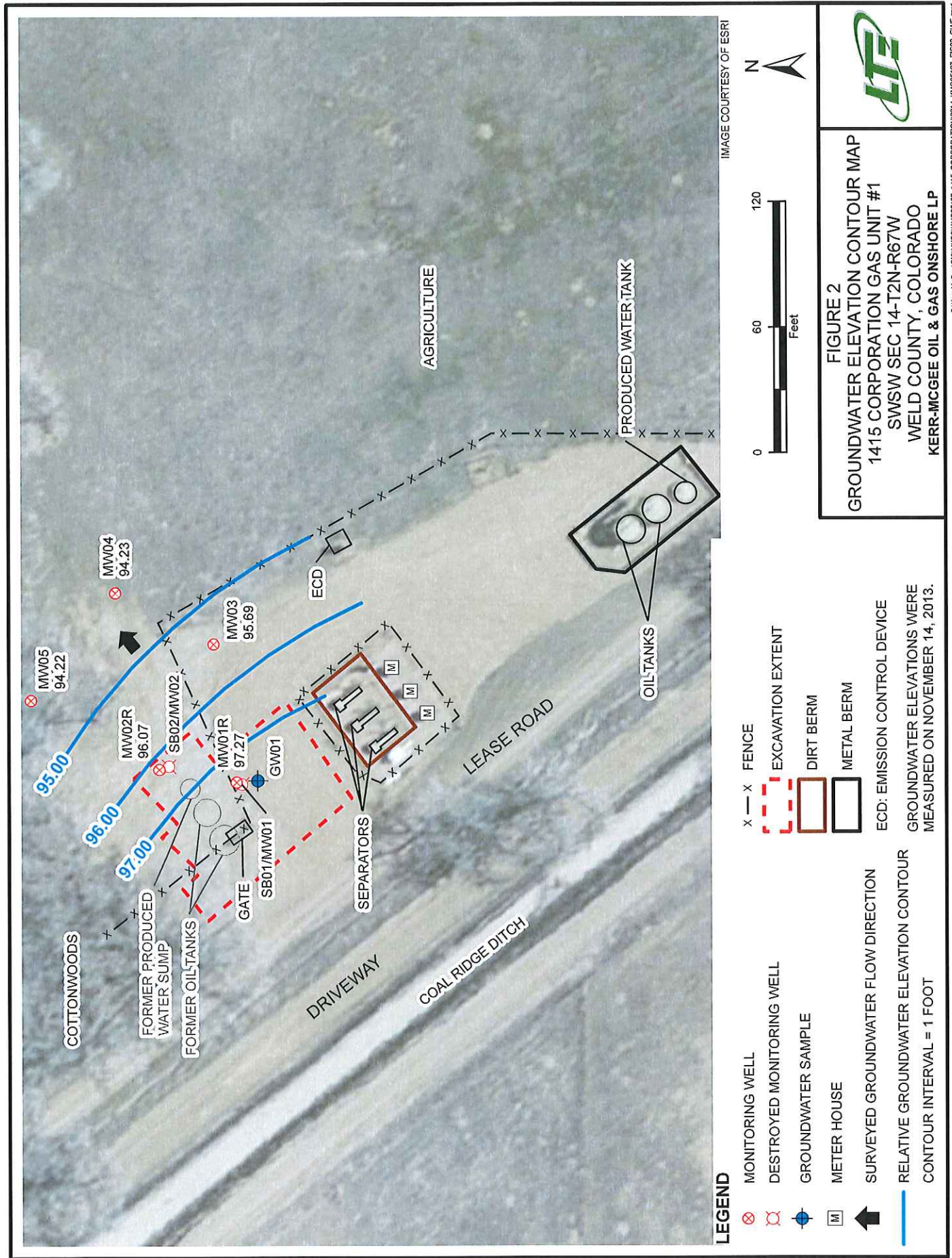


TABLE 1
GROUNDWATER ANALYTICAL AND FIELD RESULTS
1415 CORPORATION GAS UNIT # 1
WELD COUNTY, COLORADO
KERR-MCGEE OIL & GAS ONSHORE LP

Well Name	Date	Benzene (ug/L)	Toluene (ug/L)	Ethylbenzene (ug/L)	Xylenes (ug/L)	Depth Water/ (Product Thickness) (ft bgs)	Relative GW Elev. (ft)
GW01	10/31/2011	84	<1.0	42	310	NM	NA
MW01	05/07/2008	33	<1.0	26	92	6.25	NA
	01/05/2009	340	<1.0	230	1300	6.98	NA
	04/09/2009	1200	<1.0	7100	10000	6.60	NA
	07/09/2009	400	<1.0	230	2900	5.27	NA
	10/14/2009	540	<1.0	280	2900	NM	NA
	01/25/2010	86	<1.0	160	3500	NM	NA
	04/12/2010	140	<1.0	130	330	7.35	NA
	07/06/2010	180	<1.0	130	600	5.81	NA
	10/13/2010	210	<1.0	170	1000	PVC Bent	NA
	MW01 destroyed as of 1/14/2011						
MW01R	01/15/2013	31	<1.0	150	22	6.95	93.05
	04/18/2013	11	<1.0	42	<1.0	7.21	92.79
	07/25/2013	23	<1.0	55	3.3	5.46	94.54
	10/18/2013	<1.0	<1.0	<1.0	<1.0	2.95	97.05
	11/14/2013	Surveyed - Not Sampled				2.35	97.27
	01/03/2014	<4.0	<4.0	<4.0	<4.0	2.65	97.35
	04/08/2014	<1.0	<1.0	<1.0	<3.0	NM	97.30
	07/08/2014	<1.0	<1.0	<1.0	<1.0	3.46	96.73
MW02	05/07/2008	830	<1.0	150	5000	6.23	NA
	01/05/2009	610	<1.0	130	79	6.69	NA
	04/09/2009	1900	<1.0	350	6.2	1.74	NA
	07/09/2009	650	<1.0	120	6.6	5.77	NA
	10/14/2009	530	<1.0	120	38	5.78	NA
	01/25/2010	1100	<1.0	150	210	6.64	NA
	04/12/2010	650	<1.0	170	310	6.70	NA
	07/06/2010	470	<1.0	77	23	6.20	NA
	10/13/2010	410	<1.0	73	<1.0	6.56	NA
	01/14/2011	400	<1.0	73	200	6.56	NA
	04/06/2011	190	<1.0	60	100	7.42	NA
	07/07/2011	310	<1.0	70	27	5.80	NA
	10/03/2011	230	<1.0	15	2.6	7.00	NA
	MW02 destroyed as of 11/1/2011						
MW02R	01/15/2013	<1.0	<1.0	<1.0	<1.0	7.04	92.21
	04/18/2013	<1.0	<1.0	<1.0	<1.0	7.18	92.07



TABLE 1 (Continued)
GROUNDWATER ANALYTICAL AND FIELD RESULTS
1415 CORPORATION GAS UNIT # 1
WELD COUNTY, COLORADO
KERR-MCGEE OIL & GAS ONSHORE LP

Well Name	Date	Benzene (ug/L)	Toluene (ug/L)	Ethylbenzene (ug/L)	Xylenes (ug/L)	Depth Water/ (Product Thickness) (ft bgs)	Relative GW Elev. (ft)
MW02R	07/25/2013	<1.0	<1.0	<1.0	<1.0	7.00	92.25
	10/18/2013	<1.0	<1.0	<1.0	<1.0	3.53	95.72
	11/14/2013	Surveyed - Not Sampled				2.52	96.07
	01/03/2014	<4.0	<4.0	<4.0	<4.0	3.08	96.17
	04/08/2014	<1.0	<1.0	<1.0	<3.0	NM	96.32
	07/08/2014	<1.0	<1.0	<1.0	<1.0	4.73	94.85
MW03	01/15/2013	<1.0	<1.0	3.9	9.8	6.90	91.70
	04/18/2013	<1.0	<1.0	<1.0	<1.0	6.30	92.30
	07/25/2013	<1.0	<1.0	<1.0	<1.0	5.93	92.67
	10/18/2013	<1.0	<1.0	<1.0	<1.0	2.90	95.70
	11/14/2013	Surveyed - Not Sampled				2.29	95.69
	01/03/2014	<4.0	<4.0	<4.0	<4.0	2.98	95.62
	04/08/2014	<1.0	<1.0	<1.0	<3.0	NM	95.84
	07/08/2014	<1.0	<1.0	<1.0	<1.0	3.81	95.10
MW04	01/15/2013	<1.0	<1.0	<1.0	<1.0	6.90	90.54
	04/18/2013	<1.0	<1.0	<1.0	<1.0	6.34	91.10
	07/25/2013	<1.0	<1.0	<1.0	<1.0	7.49	89.95
	10/18/2013	<1.0	<1.0	<1.0	<1.0	3.46	93.98
	11/14/2013	Surveyed - Not Sampled				2.95	94.23
	01/03/2014	<4.0	<4.0	<4.0	<4.0	2.97	94.47
	04/08/2014	Not Found - Not Sampled				Not Found	NA
	04/28/2014	<1.0	<1.0	<1.0	<1.0	NM	NA
MW05	07/09/2014	<1.0	<1.0	<1.0	<1.0	NM	NA
	01/15/2013	<1.0	<1.0	<1.0	<1.0	7.30	90.83
	04/18/2013	4.1	<1.0	<1.0	<1.0	7.38	90.75
	07/25/2013	<1.0	<1.0	<1.0	<1.0	9.45	88.68
	10/18/2013	<1.0	<1.0	<1.0	<1.0	4.45	93.68
	11/14/2013	Surveyed - Not Sampled				3.61	94.22
	01/03/2014	<4.0	<4.0	<4.0	<4.0	3.50	94.63
	04/08/2014	<1.0	<1.0	<1.0	<3.0	NM	95.22
MW05	07/08/2014	<1.0	<1.0	<1.0	<1.0	5.70	92.58
Colo GW Quality Standards		5	1000	700	1400		

Notes: < - less than
ug/L - micrograms per Liter
NA - Not Analyzed/Not Available

GW - Groundwater Elev. - Elevation
Bold numbers indicate result equaled or exceeded standard.
NM - Not Measured ft bgs - feet below ground surface



Summit Scientific

741 Corporate Circle – Suite I ♦ Golden, Colorado 80401

303.277.9310 - laboratory ♦ 303.277.9531 - fax

October 22, 2013

John Cocroft
LT Environmental, Inc.
4600 West 60th Avenue
Arvada, CO 80003
RE: KMG - 1415 Corporation GU #1

Enclosed are the results of analyses for samples received by Summit Scientific on 10/18/13 17:00. If you have any questions concerning this report, please feel free to contact me.

Sincerely,

A handwritten signature in blue ink, appearing to read 'BS' or 'Shrewsbury', with a long, sweeping horizontal line extending to the right.

Ben Shrewsbury
President / Laboratory Manager



LT Environmental, Inc.
4600 West 60th Avenue
Arvada CO, 80003

Project: KMG - 1415 Corporation GU #1
Project Number: KMG 05107
Project Manager: John Cocroft

Reported:
10/22/13 19:40

ANALYTICAL REPORT FOR SAMPLES

Sample ID	Laboratory ID	Matrix	Date Sampled	Date Received
MW02R	R310184-01	Water	10/18/13 12:10	10/18/13 17:00
MW01R	R310184-02	Water	10/18/13 11:50	10/18/13 17:00
MW03	R310184-03	Water	10/18/13 11:45	10/18/13 17:00
MW04	R310184-04	Water	10/18/13 12:00	10/18/13 17:00
MW05	R310184-05	Water	10/18/13 12:05	10/18/13 17:00

Summit Scientific

The results in this report apply to the samples analyzed in accordance with the chain of custody document. This analytical report must be reproduced in its entirety.

S₂

LT Environmental, Inc.
4600 West 60th Avenue
Arvada CO, 80003

Project: KMG - 1415 Corporation GU #1

Project Number: KMG 05107
Project Manager: John Cocroft

Reported:
10/22/13 19:40

Page 1 of 1

Summit Scientific

741 Corporate Circle - Suite 1
Golden, Colorado 80401
303-277-9310 - 303-574-5933 Fax

Client: LT Environmental, Inc.
Project: KMG - 1415 Corporation GU #1
Project Manager: John Cocroft
Project Number: KMG 05107

Number	Sample Identification	Matrix	Type	Sample Date	Sample Time	Sampled By	Container	Qty	Analyses
01-001	MW00R	Water	Field Sample	10/18/13	12:10	CW	Via Vid - HCl	3	E500 BTEX_TYTL
02-001	MW01R	Water	Field Sample	11:50			Via Vid - HCl	3	E500 BTEX_TYTL
03-001	MW03	Water	Field Sample	11:45			Via Vid - HCl	3	E500 BTEX_TYTL
04-001	MW04	Water	Field Sample	12:00			Via Vid - HCl	3	E500 BTEX_TYTL
05-001	MW05	Water	Field Sample	12:05			Via Vid - HCl	3	E500 BTEX_TYTL

Zero Arrest Time (Check)

Save Data
21 hours
14 hours
4 hours

Relinquished By

Date

CW 10/18/13

Received By

Date

10/18/13 17:00

Sample Integrity:

Temperature Upon Receipt

Pass/Fail

10/22/13

Summit Scientific

The results in this report apply to the samples analyzed in accordance with the chain of custody document. This analytical report must be reproduced in its entirety.



LT Environmental, Inc.
4600 West 60th Avenue
Arvada CO, 80003

Project: KMG - 1415 Corporation GU #1
Project Number: KMG 05107
Project Manager: John Cocroft

Reported:
10/22/13 19:40

MW02R
R310184-01 (Water)

Summit Scientific

Volatile Organic Compounds by EPA Method 8260B

Date Sampled: 10/18/13 12:10

Analyte	Result	Reporting Limit	Units	Dilution	Batch	Prepared	Analyzed	Method	Notes
Benzene	ND	1.0	ug/l	1	3102116	10/21/13	10/22/13	EPA 8260B	
Toluene	ND	1.0	"	"	"	"	"	"	
Ethylbenzene	ND	1.0	"	"	"	"	"	"	
Xylenes (total)	ND	1.0	"	"	"	"	"	"	

Date Sampled: 10/18/13 12:10

Analyte	Result	Reporting Limit	Units	Dilution	Batch	Prepared	Analyzed	Method	Notes
Surrogate: 1,2-Dichloroethane-d4		111 %	37-154		"	"	"	"	
Surrogate: Toluene-d8		99.8 %	45-149		"	"	"	"	
Surrogate: 4-Bromofluorobenzene		104 %	45-146		"	"	"	"	

Summit Scientific

The results in this report apply to the samples analyzed in accordance with the chain of custody document. This analytical report must be reproduced in its entirety.

S₂

LT Environmental, Inc.
4600 West 60th Avenue
Arvada CO, 80003

Project: KMG - 1415 Corporation GU #1
Project Number: KMG 05107
Project Manager: John Cocroft

Reported:
10/22/13 19:40

MW01R
R310184-02 (Water)

Summit Scientific

Volatile Organic Compounds by EPA Method 8260B

Date Sampled: 10/18/13 11:50

Analyte	Result	Reporting Limit	Units	Dilution	Batch	Prepared	Analyzed	Method	Notes
Benzene	ND	1.0	ug/l	1	3102116	10/21/13	10/22/13	EPA 8260B	
Toluene	ND	1.0	"	"	"	"	"	"	
Ethylbenzene	ND	1.0	"	"	"	"	"	"	
Xylenes (total)	ND	1.0	"	"	"	"	"	"	

Date Sampled: 10/18/13 11:50

Analyte	Result	Reporting Limit	Units	Dilution	Batch	Prepared	Analyzed	Method	Notes
Surrogate: 1,2-Dichloroethane-d4		112 %	37-154		"	"	"	"	
Surrogate: Toluene-d8		101 %	45-149		"	"	"	"	
Surrogate: 4-Bromofluorobenzene		103 %	45-146		"	"	"	"	

Summit Scientific

The results in this report apply to the samples analyzed in accordance with the chain of custody document. This analytical report must be reproduced in its entirety.



S₂

LT Environmental, Inc.
4600 West 60th Avenue
Arvada CO, 80003

Project: KMG - 1415 Corporation GU #1
Project Number: KMG 05107
Project Manager: John Cocroft

Reported:
10/22/13 19:40

MW03
R310184-03 (Water)

Summit Scientific

Volatile Organic Compounds by EPA Method 8260B

Date Sampled: 10/18/13 11:45

Analyte	Result	Reporting Limit	Units	Dilution	Batch	Prepared	Analyzed	Method	Notes
Benzene	ND	1.0	ug/l	1	3102116	10/21/13	10/22/13	EPA 8260B	
Toluene	ND	1.0	"	"	"	"	"	"	
Ethylbenzene	ND	1.0	"	"	"	"	"	"	
Xylenes (total)	ND	1.0	"	"	"	"	"	"	

Date Sampled: 10/18/13 11:45

Analyte	Result	Reporting Limit	Units	Dilution	Batch	Prepared	Analyzed	Method	Notes
Surrogate: 1,2-Dichloroethane-d4		111 %	37-154		"	"	"	"	
Surrogate: Toluene-d8		100 %	45-149		"	"	"	"	
Surrogate: 4-Bromofluorobenzene		100 %	45-146		"	"	"	"	

Summit Scientific

The results in this report apply to the samples analyzed in accordance with the chain of custody document. This analytical report must be reproduced in its entirety.



S₂

LT Environmental, Inc.
4600 West 60th Avenue
Arvada CO, 80003

Project: KMG - 1415 Corporation GU #1
Project Number: KMG 05107
Project Manager: John Cocroft

Reported:
10/22/13 19:40

MW04
R310184-04 (Water)

Summit Scientific

Volatile Organic Compounds by EPA Method 8260B

Date Sampled: 10/18/13 12:00

Analyte	Result	Reporting Limit	Units	Dilution	Batch	Prepared	Analyzed	Method	Notes
Benzene	ND	1.0	ug/l	1	3102116	10/21/13	10/22/13	EPA 8260B	
Toluene	ND	1.0	"	"	"	"	"	"	
Ethylbenzene	ND	1.0	"	"	"	"	"	"	
Xylenes (total)	ND	1.0	"	"	"	"	"	"	

Date Sampled: 10/18/13 12:00

Analyte	Result	Reporting Limit	Units	Dilution	Batch	Prepared	Analyzed	Method	Notes
Surrogate: 1,2-Dichloroethane-d4		110 %	37-154		"	"	"	"	
Surrogate: Toluene-d8		101 %	45-149		"	"	"	"	
Surrogate: 4-Bromofluorobenzene		104 %	45-146		"	"	"	"	

Summit Scientific

The results in this report apply to the samples analyzed in accordance with the chain of custody document. This analytical report must be reproduced in its entirety.



S₂

LT Environmental, Inc.
4600 West 60th Avenue
Arvada CO, 80003

Project: KMG - 1415 Corporation GU #1
Project Number: KMG 05107
Project Manager: John Cocroft

Reported:
10/22/13 19:40

MW05
R310184-05 (Water)

Summit Scientific

Volatile Organic Compounds by EPA Method 8260B

Date Sampled: 10/18/13 12:05

Analyte	Result	Reporting Limit	Units	Dilution	Batch	Prepared	Analyzed	Method	Notes
Benzene	ND	1.0	ug/l	1	3102116	10/21/13	10/22/13	EPA 8260B	
Toluene	ND	1.0	"	"	"	"	"	"	
Ethylbenzene	ND	1.0	"	"	"	"	"	"	
Xylenes (total)	ND	1.0	"	"	"	"	"	"	

Date Sampled: 10/18/13 12:05

Analyte	Result	Reporting Limit	Units	Dilution	Batch	Prepared	Analyzed	Method	Notes
Surrogate: 1,2-Dichloroethane-d4		110 %	37-154		"	"	"	"	
Surrogate: Toluene-d8		99.2 %	45-149		"	"	"	"	
Surrogate: 4-Bromofluorobenzene		102 %	45-146		"	"	"	"	

Summit Scientific

The results in this report apply to the samples analyzed in accordance with the chain of custody document. This analytical report must be reproduced in its entirety.





LT Environmental, Inc.
4600 West 60th Avenue
Arvada CO, 80003

Project: KMG - 1415 Corporation GU #1
Project Number: KMG 05107
Project Manager: John Cocroft

Reported:
10/22/13 19:40

Volatile Organic Compounds by EPA Method 8260B - Quality Control
Summit Scientific

Analyte	Reporting			Spike	Source	%REC		RPD		Notes
	Result	Limit	Units	Level	Result	%REC	Limits	RPD	Limit	

Batch 3102116 - EPA 5030 Water MS

Blank (3102116-BLK1)

Prepared & Analyzed: 10/22/13

Benzene	ND	1.0	ug/l							
Toluene	ND	1.0	"							
Ethylbenzene	ND	1.0	"							
Xylenes (total)	ND	1.0	"							
Surrogate: 1,2-Dichloroethane-d4	15.0		"	13.2		114	37-154			
Surrogate: Toluene-d8	13.5		"	13.3		101	45-149			
Surrogate: 4-Bromofluorobenzene	13.6		"	13.3		102	45-146			

LCS (3102116-BS1)

Prepared & Analyzed: 10/22/13

Benzene	33.6	1.0	ug/l	33.3		101	51-132			
Toluene	33.0	1.0	"	33.3		98.9	51-138			
Ethylbenzene	34.3	1.0	"	33.3		103	58-146			
m,p-Xylene	69.3	2.0	"	66.7		104	57-144			
o-Xylene	33.4	1.0	"	33.3		100	53-146			
Surrogate: 1,2-Dichloroethane-d4	14.4		"	13.2		108	37-154			
Surrogate: Toluene-d8	13.2		"	13.3		99.4	45-149			
Surrogate: 4-Bromofluorobenzene	13.6		"	13.3		102	45-146			

LCS Dup (3102116-BSD1)

Prepared & Analyzed: 10/22/13

Benzene	35.0	1.0	ug/l	33.3		105	51-132	3.97	17	
Toluene	34.2	1.0	"	33.3		103	51-138	3.60	17	
Ethylbenzene	35.3	1.0	"	33.3		106	58-146	2.67	16	
m,p-Xylene	71.2	2.0	"	66.7		107	57-144	2.66	16	
o-Xylene	34.3	1.0	"	33.3		103	53-146	2.84	15	
Surrogate: 1,2-Dichloroethane-d4	14.6		"	13.2		110	37-154			
Surrogate: Toluene-d8	13.4		"	13.3		101	45-149			
Surrogate: 4-Bromofluorobenzene	13.5		"	13.3		101	45-146			

Summit Scientific

The results in this report apply to the samples analyzed in accordance with the chain of custody document. This analytical report must be reproduced in its entirety.

Page 8 of 10



LT Environmental, Inc.
4600 West 60th Avenue
Arvada CO, 80003

Project: KMG - 1415 Corporation GU #1
Project Number: KMG 05107
Project Manager: John Cocroft

Reported:
10/22/13 19:40

Volatile Organic Compounds by EPA Method 8260B - Quality Control
Summit Scientific

Analyte	Reporting			Spike	Source		%REC		RPD	
	Result	Limit	Units	Level	Result	%REC	Limits	RPD	Limit	Notes

Batch 3102116 - EPA 5030 Water MS

Matrix Spike (3102116-MS1)			Source: R310184-01		Prepared & Analyzed: 10/22/13					
Benzene	34.5	1.0	ug/l	33.3	ND	104	34-141			
Toluene	33.4	1.0	"	33.3	ND	100	27-151			
Ethylbenzene	34.5	1.0	"	33.3	ND	104	29-160			
m,p-Xylene	69.9	2.0	"	66.7	ND	105	20-166			
o-Xylene	33.4	1.0	"	33.3	ND	100	33-159			
Surrogate: 1,2-Dichloroethane-d4	14.9		"	13.2		112	37-154			
Surrogate: Toluene-d8	13.3		"	13.3		99.6	45-149			
Surrogate: 4-Bromofluorobenzene	13.7		"	13.3		102	45-146			
Matrix Spike Dup (3102116-MSD1)			Source: R310184-01		Prepared & Analyzed: 10/22/13					
Benzene	34.3	1.0	ug/l	33.3	ND	103	34-141	0.639	32	
Toluene	33.8	1.0	"	33.3	ND	101	27-151	1.13	25	
Ethylbenzene	35.0	1.0	"	33.3	ND	105	29-160	1.27	50	
m,p-Xylene	71.0	2.0	"	66.7	ND	106	20-166	1.52	36	
o-Xylene	33.7	1.0	"	33.3	ND	101	33-159	0.864	26	
Surrogate: 1,2-Dichloroethane-d4	14.5		"	13.2		110	37-154			
Surrogate: Toluene-d8	13.3		"	13.3		99.7	45-149			
Surrogate: 4-Bromofluorobenzene	13.5		"	13.3		101	45-146			

Summit Scientific

The results in this report apply to the samples analyzed in accordance with the chain of custody document. This analytical report must be reproduced in its entirety.

S₂

LT Environmental, Inc.
4600 West 60th Avenue
Arvada CO, 80003

Project: KMG - 1415 Corporation GU #1
Project Number: KMG 05107
Project Manager: John Cocroft

Reported:
10/22/13 19:40

Notes and Definitions

DET Analyte DETECTED
ND Analyte NOT DETECTED at or above the reporting limit
NR Not Reported
dry Sample results reported on a dry weight basis
RPD Relative Percent Difference

Summit Scientific



The results in this report apply to the samples analyzed in accordance with the chain of custody document. This analytical report must be reproduced in its entirety.



January 10, 2014

LT Environmental, Inc.

John Cocroft

4600 West 60th Avenue

Arvada

CO 80003

Project Name - KMG - 1415 Corporation GU 1

Project Number - KMG05107

Attached are your analytical results for KMG - 1415 Corporation GU 1 received by Origins Laboratory, Inc. January 03, 2014. This project is associated with Origins project number X401026-01.

The analytical results in the following report were analyzed under the guidelines of EPA Methods. These methods are identified as follows; "SW" are defined in SW-846, "EPA" are defined in 40CFR part 136 and "SM" are defined in the most current revision of Standard Methods For the Examination of Water and Wastewater.

The analytical results apply specifically to the samples and analyses specified per the attached Chain of Custody. As such, this report shall not be reproduced except in full, without the written approval of Origin's laboratory.

Unless otherwise noted, the analytical results for all soil samples are reported on a wet weight basis. All analytical analyses were performed under NELAP guidelines unless noted by a data qualifier.

Any holding time exceedances, deviations from the method specifications or deviations from Origins Laboratory's Standard Operating Procedures are outlined in the case narrative.

Thank you for selecting Origins for your analytical needs. Please contact us with any questions concerning this report, or if we can help with anything at all.

Origins Laboratory, Inc.
303.433.1322
o-squad@oelabinc.com



1725 Elk Place, Denver, CO 80211 | Phone: 303.433.1322 | Fax: 303.265.9645

LT Environmental, Inc.
4600 West 60th Avenue
Arvada CO 80003

John Cocroft
Project Number: KMG05107
Project: KMG - 1415 Corporation GU 1

CROSS REFERENCE REPORT

Sample ID	Laboratory ID	Matrix	Date Sampled	Date Received
MW01R	X401026-01	Water	January 3, 2014 14:40	01/03/2014 17:02
MW02R	X401026-02	Water	January 3, 2014 14:30	01/03/2014 17:02
MW03	X401026-03	Water	January 3, 2014 14:35	01/03/2014 17:02
MW04	X401026-04	Water	January 3, 2014 14:10	01/03/2014 17:02
MW05	X401026-05	Water	January 3, 2014 14:20	01/03/2014 17:02

Origins Laboratory, Inc.



Noelle E Doyle, President

The results in this report apply to the samples analyzed in accordance with the chain of custody document. This analytical report must be reproduced in its entirety.

LT Environmental, Inc.
4600 West 60th Avenue
Arvada CO 80003

John Cocroft
Project Number: KMG05107
Project: KMG - 1415 Corporation GU 1

ORIGINS
LABORATORY, INC

X401006

1725 Elk Place, Denver, CO 80211
Laboratory # - 303.433.1322

Client: LT Environmental, Inc.		Project Manager: John Cocroft						
Project: KMG - 1415 Corporation GU 1		Project Number: KMG05107						
Number	Sample Identification	Matrix	Sample Date	Sample Time	Sampled By	Container	Qty	Analyses
01-001	MW01R	Water	1/3/14	1440	CW	01_40mL Amber VOA Vial - HCL	3	BTEX by EPA 8260C
02-001	MW02R	Water	1/1	1430	1/1	01_40mL Amber VOA Vial - HCL	3	BTEX by EPA 8260C
03-001	MW03	Water	1/1	1435	1/1	01_40mL Amber VOA Vial - HCL	3	BTEX by EPA 8260C
04-001	MW04	Water	1/1	1410	1/1	01_40mL Amber VOA Vial - HCL	3	BTEX by EPA 8260C
05-001	MW05	Water	1/1	1420	1/1	01_40mL Amber VOA Vial - HCL	3	BTEX by EPA 8260C

Relinquished By: John Cocroft Date / Time: 1/3/14 1700
Received By: John Cocroft Date / Time: 1/3/14 1702

Temperature on Receipt: ☐ 72-hr ☐ Standard
Turn Around Time: ☐ Same Day ☐ 24-hr ☐ 48-hr

Origins Laboratory, Inc.

Noelle E Doyle

Noelle E Doyle, President

The results in this report apply to the samples analyzed in accordance with the chain of custody document. This analytical report must be reproduced in its entirety.

LT Environmental, Inc.
4600 West 60th Avenue
Arvada CO 80003

John Cocroft
Project Number: KMG05107
Project: KMG - 1415 Corporation GU 1

Origins Laboratory

F-012207-01-R1
Effective Date: 01/09/12

Sample Receipt Checklist

Origins Work Order: X4010050

Client: LT

Client Project ID: 1415 Corporation GU 1

Checklist Completed by: John Smith

Shipped Via: Pick Up

(UPS, FedEx, Hand Delivered, Pick up, etc.)

Date/time completed: 1/3/14 17:22

Airbill #: NA

Matrix(s) Received (Check all that apply): Soil/Solid X Water Other

Cooler Number/Temperature: 12.1 °C / 1 °C / 1 °C / 1 °C (Describe)

Thermometer ID: 1000

Requirement Description	Yes	No	N/A	Comments (if any)
If samples require cooling, was the temperature between 0°C to ≤ 5°C ⁽¹⁾ ?	X			
Is there ice present (document if blue ice is used)	X			
Are custody seals present on cooler? (if so, document in comments if they are signed and dated, broken or intact)		X		
Are custody seals present on each sample container? (if so, document in comments if they are signed and dated, broken or intact)		X		
Were all samples received intact ⁽¹⁾ ?	X			
Was adequate sample volume provided ⁽¹⁾ ?	X			
Are short holding time analytes or samples with HTs due within 48 hours present ⁽¹⁾ ?		X		
Is a chain-of-custody (COC) present and filled out completely ⁽¹⁾ ?	X			
Does the COC agree with the number and type of sample bottles received ⁽¹⁾ ?	X			
Do the sample IDs on the bottle labels match the COC ⁽¹⁾ ?	X			
Is the COC properly relinquished by the client with date and time recorded ⁽¹⁾ ?	X			
For volatiles in water – is there headspace (> ¼ inch bubble) present? If yes, contact client and note in narrative.		X		
Are samples preserved that require preservation and was it checked ⁽¹⁾ ? (note ID of confirmation instrument used in comments) / (preservation is not confirmed for sub-contracted analyses in order to ensure sample integrity; pH < 2 for samples preserved with HNO ₃ , HCl, H ₂ SO ₄ / (pH > 10 for samples preserved with Na ₂ O ₂ +NaOH, ZnAc+NaOH)	X			HCC
Additional Comments (if any)				

If NO, then contact the client before proceeding with analysis and note date, time and person contacted as well as the corrective action to be taken in the additional comments (above) and the case narrative.

Reviewed by (Project Manager): [Signature]

Date/Time Reviewed: 01-08-14 16:51

Origins Laboratory, Inc.

[Signature]

Noelle E Doyle, President

The results in this report apply to the samples analyzed in accordance with the chain of custody document. This analytical report must be reproduced in its entirety.

LT Environmental, Inc.
4600 West 60th Avenue
Arvada CO 80003

John Cocroft
Project Number: KMG05107
Project: KMG - 1415 Corporation GU 1

MW01R

1/3/2014 2:40:00PM

Analyte	Result	Reporting Limit	Units	Dilution	Batch	Prepared	Analyzed	Notes
---------	--------	-----------------	-------	----------	-------	----------	----------	-------

Origins Laboratory, Inc.
X401026-01 (Water)

BTEX by EPA 8260C

Benzene	ND	4.0	ug/L	4	4A06010	01/06/2014	01/07/2014
Toluene	ND	4.0	"	"	"	"	"
Ethylbenzene	ND	4.0	"	"	"	"	"
Xylenes, total	ND	4.0	"	"	"	"	"

Surrogate: 1,2-Dichloroethane-d4	101 %	84-121			"	"	"
Surrogate: Toluene-d8	99.1 %	85-115			"	"	"
Surrogate: 4-Bromofluorobenzene	100 %	84-114			"	"	"

Origins Laboratory, Inc.



Noelle E Doyle, President

The results in this report apply to the samples analyzed in accordance with the chain of custody document. This analytical report must be reproduced in its entirety.

LT Environmental, Inc.
4600 West 60th Avenue
Arvada CO 80003

John Cocroft
Project Number: KMG05107
Project: KMG - 1415 Corporation GU 1

MW02R

1/3/2014 2:30:00PM

Analyte	Result	Reporting Limit	Units	Dilution	Batch	Prepared	Analyzed	Notes
---------	--------	--------------------	-------	----------	-------	----------	----------	-------

Origins Laboratory, Inc.
X401026-02 (Water)

BTEX by EPA 8260C

Benzene	ND	4.0	ug/L	4	4A06010	01/06/2014	01/07/2014
Toluene	ND	4.0	"	"	"	"	"
Ethylbenzene	ND	4.0	"	"	"	"	"
Xylenes, total	ND	4.0	"	"	"	"	"

Surrogate: 1,2-Dichloroethane-d4	101 %	84-121	"	"	"
Surrogate: Toluene-d8	98.4 %	85-115	"	"	"
Surrogate: 4-Bromofluorobenzene	98.7 %	84-114	"	"	"

Origins Laboratory, Inc.



Noelle E Doyle, President

The results in this report apply to the samples analyzed in accordance with the chain of custody document. This analytical report must be reproduced in its entirety.

LT Environmental, Inc.
4600 West 60th Avenue
Arvada CO 80003

John Cocroft
Project Number: KMG05107
Project: KMG - 1415 Corporation GU 1

MW03

1/3/2014 2:35:00PM

Analyte	Result	Reporting Limit	Units	Dilution	Batch	Prepared	Analyzed	Notes
---------	--------	--------------------	-------	----------	-------	----------	----------	-------

Origins Laboratory, Inc.
X401026-03 (Water)

BTEX by EPA 8260C

Benzene	ND	4.0	ug/L	4	4A06010	01/06/2014	01/07/2014	
Toluene	ND	4.0	"	"	"	"	"	
Ethylbenzene	ND	4.0	"	"	"	"	"	
Xylenes, total	ND	4.0	"	"	"	"	"	

Surrogate: 1,2-Dichloroethane-d4	100 %	84-121			"	"	"	
Surrogate: Toluene-d8	99.9 %	85-115			"	"	"	
Surrogate: 4-Bromofluorobenzene	101 %	84-114			"	"	"	

Origins Laboratory, Inc.



Noelle E Doyle, President

The results in this report apply to the samples analyzed in accordance with the chain of custody document. This analytical report must be reproduced in its entirety.

LT Environmental, Inc.
4600 West 60th Avenue
Arvada CO 80003

John Cocroft
Project Number: KMG05107
Project: KMG - 1415 Corporation GU 1

MW04

1/3/2014 2:10:00PM

Analyte	Result	Reporting Limit	Units	Dilution	Batch	Prepared	Analyzed	Notes
---------	--------	-----------------	-------	----------	-------	----------	----------	-------

Origins Laboratory, Inc. X401026-04 (Water)

BTEX by EPA 8260C

Benzene	ND	4.0	ug/L	4	4A06010	01/06/2014	01/07/2014	
Toluene	ND	4.0	"	"	"	"	"	
Ethylbenzene	ND	4.0	"	"	"	"	"	
Xylenes, total	ND	4.0	"	"	"	"	"	

Surrogate: 1,2-Dichloroethane-d4	100 %	84-121			"	"	"	
Surrogate: Toluene-d8	98.1 %	85-115			"	"	"	
Surrogate: 4-Bromofluorobenzene	99.1 %	84-114			"	"	"	

Origins Laboratory, Inc.



Noelle E Doyle, President

The results in this report apply to the samples analyzed in accordance with the chain of custody document. This analytical report must be reproduced in its entirety.

LT Environmental, Inc.
4600 West 60th Avenue
Arvada CO 80003

John Cocroft
Project Number: KMG05107
Project: KMG - 1415 Corporation GU 1

MW05

1/3/2014 2:20:00PM

Analyte	Result	Reporting Limit	Units	Dilution	Batch	Prepared	Analyzed	Notes
---------	--------	-----------------	-------	----------	-------	----------	----------	-------

Origins Laboratory, Inc.
X401026-05 (Water)

BTEX by EPA 8260C

Benzene	ND	4.0	ug/L	4	4A06010	01/06/2014	01/07/2014
Toluene	ND	4.0	"	"	"	"	"
Ethylbenzene	ND	4.0	"	"	"	"	"
Xylenes, total	ND	4.0	"	"	"	"	"

Surrogate: 1,2-Dichloroethane-d4	101 %	84-121			"	"	"
Surrogate: Toluene-d8	98.9 %	85-115			"	"	"
Surrogate: 4-Bromofluorobenzene	101 %	84-114			"	"	"

Origins Laboratory, Inc.



Noelle E Doyle, President

The results in this report apply to the samples analyzed in accordance with the chain of custody document. This analytical report must be reproduced in its entirety.

LT Environmental, Inc.
4600 West 60th Avenue
Arvada CO 80003

John Cocroft
Project Number: KMG05107
Project: KMG - 1415 Corporation GU 1

Volatile Organic Compounds by GC/MS SW846 8260C - Quality Control
Origins Laboratory, Inc.

Analyte	Result	Reporting Limit	Units	Spike Level	Source Result	%REC	%REC Limits	RPD	RPD Limit	Notes
---------	--------	-----------------	-------	-------------	---------------	------	-------------	-----	-----------	-------

Batch 4A06010 - EPA 5030B (Water)

Blank (4A06010-BLK1)

Prepared: 01/06/2014 Analyzed: 01/07/2014

Benzene	ND	1.0	ug/L							
Toluene	ND	1.0	"							
Ethylbenzene	ND	1.0	"							
Xylenes, total	ND	1.0	"							
Surrogate: 1,2-Dichloroethane-d4	62		"	62.5		99.5	84-121			
Surrogate: Toluene-d8	62		"	62.5		99.4	85-115			
Surrogate: 4-Bromofluorobenzene	62		"	62.5		99.0	84-114			

Origins Laboratory, Inc.



Noelle E Doyle, President

The results in this report apply to the samples analyzed in accordance with the chain of custody document. This analytical report must be reproduced in its entirety.

LT Environmental, Inc.
4600 West 60th Avenue
Arvada CO 80003

John Cocroft
Project Number: KMG05107
Project: KMG - 1415 Corporation GU 1

Volatile Organic Compounds by GC/MS SW846 8260C - Quality Control
Origins Laboratory, Inc.

Analyte	Result	Reporting Limit	Units	Spike Level	Source Result	%REC	%REC Limits	RPD	RPD Limit	Notes
Batch 4A06010 - EPA 5030B (Water)										
LCS (4A06010-BS1)					Prepared: 01/06/2014 Analyzed: 01/07/2014					
Benzene	51.2	1.0	ug/L	50.0		102	74-130			
Toluene	48.7	1.0	"	50.0		97.5	76-128			
Ethylbenzene	48.8	1.0	"	50.0		97.7	78-130			
m,p-Xylene	96.6	2.0	"	100		96.6	75-134			
o-Xylene	47.0	1.0	"	50.0		93.9	76-129			
Surrogate: 1,2-Dichloroethane-d4	60		"	62.5		95.4	84-121			
Surrogate: Toluene-d8	61		"	62.5		97.6	85-115			
Surrogate: 4-Bromofluorobenzene	63		"	62.5		100	84-114			

Origins Laboratory, Inc.



Noelle E Doyle, President

The results in this report apply to the samples analyzed in accordance with the chain of custody document. This analytical report must be reproduced in its entirety.

LT Environmental, Inc.
4600 West 60th Avenue
Arvada CO 80003

John Cocroft
Project Number: KMG05107
Project: KMG - 1415 Corporation GU 1

Volatile Organic Compounds by GC/MS SW846 8260C - Quality Control
Origins Laboratory, Inc.

Analyte	Result	Reporting Limit	Units	Spike Level	Source Result	%REC	%REC Limits	RPD	RPD Limit	Notes
---------	--------	-----------------	-------	-------------	---------------	------	-------------	-----	-----------	-------

Batch 4A06010 - EPA 5030B (Water)

Matrix Spike (4A06010-MS1)		Source: X401030-07			Prepared: 01/06/2014 Analyzed: 01/07/2014					
Benzene	56.2	1.0	ug/L	50.0	ND	112	74-130			
Toluene	54.7	1.0	"	50.0	ND	109	73-131			
Ethylbenzene	56.7	1.0	"	50.0	ND	113	76-132			
m,p-Xylene	110	2.0	"	100	ND	110	69-139			
o-Xylene	52.4	1.0	"	50.0	ND	105	74-131			
Surrogate: 1,2-Dichloroethane-d4	60		"	62.5		95.5	84-121			
Surrogate: Toluene-d8	61		"	62.5		96.4	85-115			
Surrogate: 4-Bromofluorobenzene	62		"	62.5		99.1	84-114			

Origins Laboratory, Inc.



Noelle E Doyle, President

The results in this report apply to the samples analyzed in accordance with the chain of custody document. This analytical report must be reproduced in its entirety.

LT Environmental, Inc.
4600 West 60th Avenue
Arvada CO 80003

John Cocroft
Project Number: KMG05107
Project: KMG - 1415 Corporation GU 1

Volatile Organic Compounds by GC/MS SW846 8260C - Quality Control
Origins Laboratory, Inc.

Analyte	Result	Reporting Limit	Units	Spike Level	Source Result	%REC	%REC Limits	RPD	RPD Limit	Notes
---------	--------	-----------------	-------	-------------	---------------	------	-------------	-----	-----------	-------

Batch 4A06010 - EPA 5030B (Water)

Matrix Spike Dup (4A06010-MSD1)		Source: X401030-07			Prepared: 01/06/2014 Analyzed: 01/07/2014					
Benzene	55.3	1.0	ug/L	50.0	ND	111	74-130	1.60	20	
Toluene	53.9	1.0	"	50.0	ND	108	73-131	1.42	20	
Ethylbenzene	55.2	1.0	"	50.0	ND	110	76-132	2.61	20	
m,p-Xylene	109	2.0	"	100	ND	109	69-139	1.12	20	
o-Xylene	52.6	1.0	"	50.0	ND	105	74-131	0.324	20	
Surrogate: 1,2-Dichloroethane-d4	60		"	62.5		96.0	84-121			
Surrogate: Toluene-d8	62		"	62.5		96.5	85-115			
Surrogate: 4-Bromofluorobenzene	62		"	62.5		99.7	84-114			

Origins Laboratory, Inc.



Noelle E Doyle, President

The results in this report apply to the samples analyzed in accordance with the chain of custody document. This analytical report must be reproduced in its entirety.

LT Environmental, Inc.
4600 West 60th Avenue
Arvada CO 80003

John Cocroft
Project Number: KMG05107
Project: KMG - 1415 Corporation GU 1

Notes and Definitions

ND Analyte NOT DETECTED at or above the reporting limit
RPD Relative Percent Difference

Origins Laboratory, Inc.



Noelle E Doyle, President

The results in this report apply to the samples analyzed in accordance with the chain of custody document. This analytical report must be reproduced in its entirety.



April 14, 2014

LT Environmental, Inc.

John Cocroft

4600 West 60th Avenue

Arvada

CO 80003

Project Name - KMG - 1415 Corporation GU 1

Project Number - KMG05107

Attached are your analytical results for KMG - 1415 Corporation GU 1 received by Origins Laboratory, Inc. April 08, 2014. This project is associated with Origins project number X404090-01.

The analytical results in the following report were analyzed under the guidelines of EPA Methods. These methods are identified as follows; "SW" are defined in SW-846, "EPA" are defined in 40CFR part 136 and "SM" are defined in the most current revision of Standard Methods For the Examination of Water and Wastewater.

The analytical results apply specifically to the samples and analyses specified per the attached Chain of Custody. As such, this report shall not be reproduced except in full, without the written approval of Origin's laboratory.

Unless otherwise noted, the analytical results for all soil samples are reported on a wet weight basis. All analytical analyses were performed under NELAP guidelines unless noted by a data qualifier.

Any holding time exceedances, deviations from the method specifications or deviations from Origins Laboratory's Standard Operating Procedures are outlined in the case narrative.

Thank you for selecting Origins for your analytical needs. Please contact us with any questions concerning this report, or if we can help with anything at all.

Origins Laboratory, Inc.
303.433.1322
o-squad@oelabinc.com



1725 Elk Place, Denver, CO 80211 | Phone: 303.433.1322 | Fax: 303.265.9645

LT Environmental, Inc.
4600 West 60th Avenue
Arvada CO 80003

John Cocroft
Project Number: KMG05107
Project: KMG - 1415 Corporation GU 1

CROSS REFERENCE REPORT

Sample ID	Laboratory ID	Matrix	Date Sampled	Date Received
MW01R	X404090-01	Water	April 8, 2014 13:50	04/08/2014 17:00
MW02R	X404090-02	Water	April 8, 2014 13:40	04/08/2014 17:00
MW03	X404090-03	Water	April 8, 2014 14:00	04/08/2014 17:00
MW05	X404090-04	Water	April 8, 2014 13:30	04/08/2014 17:00

Origins Laboratory, Inc.



The results in this report apply to the samples analyzed in accordance with the chain of custody document. This analytical report must be reproduced in its entirety.

Noelle Doyle Mathis, President

LT Environmental, Inc.
4600 West 60th Avenue
Arvada CO 80003

John Cocroft
Project Number: KMG05107
Project: KMG - 1415 Corporation GU 1

ORIGINS
LABORATORY, INC

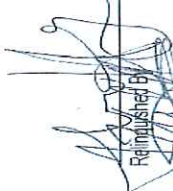

X404090

1725 Elk Place, Denver, CO 80211
Laboratory # - 303.433.1322

Client: LT Environmental, Inc.		Project Manager: John Cocroft		Project Number: KMG05107	
Project: KMG - 1415 Corporation GU 1		Sample Identification		Matrix	
Number	Sample	Date	Time	Sampled By	Container
01-001	MW01R	4/8/14	1350	AA	01 40mL Amber VOA Vial - HCL
02-001	MW02R		1340		01 40mL Amber VOA Vial - HCL
03-001	MW03		1400		01 40mL Amber VOA Vial - HCL
04-001	MW04+ NOT FOUND				01 40mL Amber VOA Vial - HCL
05-001	MW05		1330	V	01 40mL Amber VOA Vial - HCL
				Qty	Analyses
				3	BTEX by EPA 8260C
				3	BTEX by EPA 8260C
				3	BTEX by EPA 8260C
				3	BTEX by EPA 8260C
				3	BTEX by EPA 8260C

Temperature on Receipt:
Turn Around Time:
Same Day: ☐ 72-hr: ☒
24-hr: ☐ Standard: ☐
48-hr: ☐

Relinquished By: _____ Date / Time: _____
Received By: _____ Date / Time: _____

Relinquished By:  Date / Time: 4/8/14 1700
Received By:  Date / Time: 4/8/14 1700

Origins Laboratory, Inc.



Noelle Doyle Mathis, President

The results in this report apply to the samples analyzed in accordance with the chain of custody document. This analytical report must be reproduced in its entirety.

LT Environmental, Inc.
4600 West 60th Avenue
Arvada CO 80003

John Cocroft
Project Number: KMG05107
Project: KMG - 1415 Corporation GU 1

Origins Laboratory

F-012207-01-R1
Effective Date: 01/09/12

Sample Receipt Checklist

Origins Work Order

X404090

Client LTE

Client Project ID 1415 Corporation GU 1

Checklist Completed by Jesse Smith

Shipped Via: Pick Up

Date/Time completed: 4/9/14 8:14

(UPS, FedEx, Rail, Delivered, Pick up, etc.)

Airbill # N/A

Matrix(s) Received (check all that apply)

Soil/Solid

☒

Water

Other

Cooler Number/Temperature

122 °C

/

°C

(Describe)

Thermometer ID: 7002

Requirement Description	Yes	No	N/A	Comments (if any)
If samples require cooling, was the temperature between 0°C to ≤ 5°C ⁽¹⁾ ?	<input checked="" type="checkbox"/>			
Is there ice present (document if blue ice is used)?	<input checked="" type="checkbox"/>			
Are custody seals present on cooler? (if so, document in comments if they are signed and dated, broken or intact)		<input checked="" type="checkbox"/>		
Are custody seals present on each sample container? (if so, document in comments if they are signed and dated, broken or intact)		<input checked="" type="checkbox"/>		
Were all samples received intact ⁽¹⁾ ?	<input checked="" type="checkbox"/>			
Was adequate sample volume provided ⁽¹⁾ ?	<input checked="" type="checkbox"/>			
Are short holding time analytes or samples with HTs due within 48 hours present ⁽¹⁾ ?		<input checked="" type="checkbox"/>		
Is a chain-of-custody (COC) present and filled out completely ⁽¹⁾ ?	<input checked="" type="checkbox"/>			
Does the COC agree with the number and type of sample bottles received ⁽¹⁾ ?	<input checked="" type="checkbox"/>			
Do the sample IDs on the bottle labels match the COC ⁽¹⁾ ?	<input checked="" type="checkbox"/>			
Is the COC properly relinquished by the client with date and time recorded ⁽¹⁾ ?	<input checked="" type="checkbox"/>			
For volatiles in water – is there headspace (> ½ inch bubble) present? If yes, contact client and note in narrative.		<input checked="" type="checkbox"/>		
Are samples preserved that require preservation and was it checked ⁽¹⁾ ? (note ID of confirmation instrument used in comments) / (preservation is not confirmed for subcontracted analyses in order to insure sample integrity)/pH < 2 for samples preserved with HNO ₃ ; HCL, H ₂ SO ₄ / (pH > 10 for samples preserved with NaOH, NaOH, ZnAc ₂ , NaOH)	<input checked="" type="checkbox"/>			HCL
Additional Comments (if any)				

⁽¹⁾ If NO, then contact the client before proceeding with analysis and note date, time and person contacted as well as the corrective action to be taken in the additional comments below and the case narrative.

Reviewed by (Project Manager)

Date/Time Reviewed

Origins Laboratory, Inc.

Noelle Doyle Mathis, President

The results in this report apply to the samples analyzed in accordance with the chain of custody document. This analytical report must be reproduced in its entirety.

LT Environmental, Inc.
4600 West 60th Avenue
Arvada CO 80003

John Cocroft
Project Number: KMG05107
Project: KMG - 1415 Corporation GU 1

MW01R

4/8/2014 1:50:00PM

Analyte	Result	Reporting Limit	Units	Dilution	Batch	Prepared	Analyzed	Notes
---------	--------	-----------------	-------	----------	-------	----------	----------	-------

Origins Laboratory, Inc.
X404090-01 (Water)

BTEX by EPA 8260C

Benzene	ND	1.0	ug/L	1	4D09006	04/09/2014	04/09/2014
Toluene	ND	1.0	"	"	"	"	"
Ethylbenzene	ND	1.0	"	"	"	"	"
Xylenes, total	ND	3.0	"	"	"	"	"

Surrogate: 1,2-Dichloroethane-d4	108 %	87.3-113	"	"	"
Surrogate: Toluene-d8	101 %	90.9-108	"	"	"
Surrogate: 4-Bromofluorobenzene	101 %	88.6-111	"	"	"

Origins Laboratory, Inc.



The results in this report apply to the samples analyzed in accordance with the chain of custody document. This analytical report must be reproduced in its entirety.

Noelle Doyle Mathis, President

LT Environmental, Inc.
4600 West 60th Avenue
Arvada CO 80003

John Cocroft
Project Number: KMG05107
Project: KMG - 1415 Corporation GU 1

MW02R
4/8/2014 1:40:00PM

Analyte	Result	Reporting Limit	Units	Dilution	Batch	Prepared	Analyzed	Notes
---------	--------	-----------------	-------	----------	-------	----------	----------	-------

Origins Laboratory, Inc.
X404090-02 (Water)

BTEX by EPA 8260C

Benzene	ND	1.0	ug/L	1	4D09006	04/09/2014	04/09/2014	
Toluene	ND	1.0	"	"	"	"	"	
Ethylbenzene	ND	1.0	"	"	"	"	"	
Xylenes, total	ND	3.0	"	"	"	"	"	

Surrogate: 1,2-Dichloroethane-d4	102 %	87.3-113			"	"	"	
Surrogate: Toluene-d8	103 %	90.9-108			"	"	"	
Surrogate: 4-Bromofluorobenzene	100 %	88.6-111			"	"	"	

Origins Laboratory, Inc.



The results in this report apply to the samples analyzed in accordance with the chain of custody document. This analytical report must be reproduced in its entirety.

Noelle Doyle Mathis, President

LT Environmental, Inc.
4600 West 60th Avenue
Arvada CO 80003

John Cocroft
Project Number: KMG05107
Project: KMG - 1415 Corporation GU 1

MW03

4/8/2014 2:00:00PM

Analyte	Result	Reporting Limit	Units	Dilution	Batch	Prepared	Analyzed	Notes
---------	--------	-----------------	-------	----------	-------	----------	----------	-------

Origins Laboratory, Inc.
X404090-03 (Water)

BTEX by EPA 8260C

Benzene	ND	1.0	ug/L	1	4D09006	04/09/2014	04/10/2014	
Toluene	ND	1.0	"	"	"	"	"	
Ethylbenzene	ND	1.0	"	"	"	"	"	
Xylenes, total	ND	3.0	"	"	"	"	"	

Surrogate: 1,2-Dichloroethane-d4	104 %	87.3-113			"	"	"	
Surrogate: Toluene-d8	101 %	90.9-108			"	"	"	
Surrogate: 4-Bromofluorobenzene	99.8 %	88.6-111			"	"	"	

Origins Laboratory, Inc.



The results in this report apply to the samples analyzed in accordance with the chain of custody document. This analytical report must be reproduced in its entirety.

Noelle Doyle Mathis, President

LT Environmental, Inc.
4600 West 60th Avenue
Arvada CO 80003

John Cocroft
Project Number: KMG05107
Project: KMG - 1415 Corporation GU 1

MW05

4/8/2014 1:30:00PM

Analyte	Result	Reporting Limit	Units	Dilution	Batch	Prepared	Analyzed	Notes
---------	--------	-----------------	-------	----------	-------	----------	----------	-------

Origins Laboratory, Inc.
X404090-04 (Water)

BTEX by EPA 8260C

Benzene	ND	1.0	ug/L	1	4D09006	04/09/2014	04/10/2014	
Toluene	ND	1.0	"	"	"	"	"	
Ethylbenzene	ND	1.0	"	"	"	"	"	
Xylenes, total	ND	3.0	"	"	"	"	"	

Surrogate: 1,2-Dichloroethane-d4	104 %	87.3-113			"	"	"	
Surrogate: Toluene-d8	104 %	90.9-108			"	"	"	
Surrogate: 4-Bromofluorobenzene	99.2 %	88.6-111			"	"	"	

Origins Laboratory, Inc.



The results in this report apply to the samples analyzed in accordance with the chain of custody document. This analytical report must be reproduced in its entirety.

Noelle Doyle Mathis, President

LT Environmental, Inc.
4600 West 60th Avenue
Arvada CO 80003

John Cocroft
Project Number: KMG05107
Project: KMG - 1415 Corporation GU 1

Volatile Organic Compounds by GC/MS SW846 8260C - Quality Control
Origins Laboratory, Inc.

Analyte	Result	Reporting Limit	Units	Spike Level	Source Result	%REC	%REC Limits	RPD	RPD Limit	Notes
---------	--------	-----------------	-------	-------------	---------------	------	-------------	-----	-----------	-------

Batch 4D09006 - EPA 5030B (Water)

Blank (4D09006-BLK1)

Prepared: 04/09/2014 Analyzed: 04/09/2014

Benzene	ND	1.0	ug/L							
Toluene	ND	1.0	"							
Ethylbenzene	ND	1.0	"							
Xylenes, total	ND	1.0	"							
Surrogate: 1,2-Dichloroethane-d4	62		"	62.5	99.1	87.3-113				
Surrogate: Toluene-d8	63		"	62.5	100	90.9-108				
Surrogate: 4-Bromofluorobenzene	60		"	62.5	96.6	88.6-111				

Origins Laboratory, Inc.



The results in this report apply to the samples analyzed in accordance with the chain of custody document. This analytical report must be reproduced in its entirety.

Noelle Doyle Mathis, President

LT Environmental, Inc.
4600 West 60th Avenue
Arvada CO 80003

John Cocroft
Project Number: KMG05107
Project: KMG - 1415 Corporation GU 1

Volatile Organic Compounds by GC/MS SW846 8260C - Quality Control
Origins Laboratory, Inc.

Analyte	Result	Reporting Limit	Units	Spike Level	Source Result	%REC	%REC Limits	RPD	RPD Limit	Notes
Batch 4D09006 - EPA 5030B (Water)										
LCS (4D09006-BS1)					Prepared: 04/09/2014 Analyzed: 04/09/2014					
Benzene	50.3	1.0	ug/L	50.0		101	75-126			
Toluene	52.6	1.0	"	50.0		105	78.7-126			
Ethylbenzene	52.4	1.0	"	50.0		105	81-130			
m,p-Xylene	108	2.0	"	100		108	77.2-133			
o-Xylene	55.3	1.0	"	50.0		111	77.9-126			
Surrogate: 1,2-Dichloroethane-d4	61		"	62.5		97.6	87.3-113			
Surrogate: Toluene-d8	62		"	62.5		99.6	90.9-108			
Surrogate: 4-Bromofluorobenzene	63		"	62.5		101	88.6-111			

Origins Laboratory, Inc.



The results in this report apply to the samples analyzed in accordance with the chain of custody document. This analytical report must be reproduced in its entirety.

Noelle Doyle Mathis, President

LT Environmental, Inc.
4600 West 60th Avenue
Arvada CO 80003

John Cocroft
Project Number: KMG05107
Project: KMG - 1415 Corporation GU 1

Volatile Organic Compounds by GC/MS SW846 8260C - Quality Control
Origins Laboratory, Inc.

Analyte	Result	Reporting Limit	Units	Spike Level	Source Result	%REC	%REC Limits	RPD	RPD Limit	Notes
---------	--------	-----------------	-------	-------------	---------------	------	-------------	-----	-----------	-------

Batch 4D09006 - EPA 5030B (Water)

Matrix Spike (4D09006-MS1)			Source: X404087-10			Prepared: 04/09/2014 Analyzed: 04/09/2014				
Benzene	60.2	1.0	ug/L	50.0	4.3	112	74-130			
Toluene	61.2	1.0	"	50.0	0.2	122	73-131			
Ethylbenzene	61.7	1.0	"	50.0	0.1	123	76-132			
m,p-Xylene	128	2.0	"	100	0.3	127	69-139			
o-Xylene	66.2	1.0	"	50.0	0.1	132	74-131			QM-07
Surrogate: 1,2-Dichloroethane-d4	54		"	62.5		86.6	87.3-113			S-04
Surrogate: Toluene-d8	64		"	62.5		102	90.9-108			
Surrogate: 4-Bromofluorobenzene	62		"	62.5		99.5	88.6-111			

Origins Laboratory, Inc.



The results in this report apply to the samples analyzed in accordance with the chain of custody document. This analytical report must be reproduced in its entirety.

Noelle Doyle Mathis, President

LT Environmental, Inc.
4600 West 60th Avenue
Arvada CO 80003

John Cocroft
Project Number: KMG05107
Project: KMG - 1415 Corporation GU 1

Volatile Organic Compounds by GC/MS SW846 8260C - Quality Control
Origins Laboratory, Inc.

Analyte	Result	Reporting Limit	Units	Spike Level	Source Result	%REC	%REC Limits	RPD	RPD Limit	Notes
---------	--------	-----------------	-------	-------------	---------------	------	-------------	-----	-----------	-------

Batch 4D09006 - EPA 5030B (Water)

Matrix Spike Dup (4D09006-MSD1)		Source: X404087-10			Prepared: 04/09/2014 Analyzed: 04/09/2014					
Benzene	61.9	1.0	ug/L	50.0	4.3	115	74-130	2.79	20	
Toluene	60.5	1.0	"	50.0	0.2	121	73-131	1.13	20	
Ethylbenzene	61.8	1.0	"	50.0	0.1	123	76-132	0.178	20	
m,p-Xylene	127	2.0	"	100	0.3	126	69-139	0.692	20	
o-Xylene	64.9	1.0	"	50.0	0.1	130	74-131	2.00	20	
Surrogate: 1,2-Dichloroethane-d4	57		"	62.5		91.5	87.3-113			
Surrogate: Toluene-d8	63		"	62.5		101	90.9-108			
Surrogate: 4-Bromofluorobenzene	64		"	62.5		103	88.6-111			

Origins Laboratory, Inc.



The results in this report apply to the samples analyzed in accordance with the chain of custody document. This analytical report must be reproduced in its entirety.

Noelle Doyle Mathis, President

LT Environmental, Inc.
4600 West 60th Avenue
Arvada CO 80003

John Cocroft
Project Number: KMG05107
Project: KMG - 1415 Corporation GU 1

Notes and Definitions

- S-04 The surrogate recovery for this sample is outside of established control limits due to a sample matrix effect.
- QM-07 The spike recovery was outside acceptance limits for the MS and/or MSD. The batch was accepted based on acceptable LCS recovery.
- ND Analyte NOT DETECTED at or above the reporting limit
- RPD Relative Percent Difference
- All soil results are reported at a wet weight basis.

Origins Laboratory, Inc.



The results in this report apply to the samples analyzed in accordance with the chain of custody document. This analytical report must be reproduced in its entirety.

Noelle Doyle Mathis, President

May 05, 2014

LT Environmental, Inc.

John Cocroft

4600 West 60th Avenue

Arvada

CO 80003

Project Name - KMG - 1415 Corporation GU 1

Project Number - KMG05107

Attached are your analytical results for KMG - 1415 Corporation GU 1 received by Origins Laboratory, Inc. April 28, 2014. This project is associated with Origins project number X404278-01.

The analytical results in the following report were analyzed under the guidelines of EPA Methods. These methods are identified as follows; "SW" are defined in SW-846, "EPA" are defined in 40CFR part 136 and "SM" are defined in the most current revision of Standard Methods For the Examination of Water and Wastewater.

The analytical results apply specifically to the samples and analyses specified per the attached Chain of Custody. As such, this report shall not be reproduced except in full, without the written approval of Origin's laboratory.

Unless otherwise noted, the analytical results for all soil samples are reported on a wet weight basis. All analytical analyses were performed under NELAP guidelines unless noted by a data qualifier.

Any holding time exceedances, deviations from the method specifications or deviations from Origins Laboratory's Standard Operating Procedures are outlined in the case narrative.

Thank you for selecting Origins for your analytical needs. Please contact us with any questions concerning this report, or if we can help with anything at all.

Origins Laboratory, Inc.
303.433.1322
o-squad@oelabinc.com



LT Environmental, Inc.

4600 West 60th Avenue

Arvada CO 80003

John Cocroft

Project Number: KMG05107

Project: KMG - 1415 Corporation GU 1

CROSS REFERENCE REPORT

Sample ID	Laboratory ID	Matrix	Date Sampled	Date Received
MW04	X404278-01	Water	April 28, 2014 14:30	04/28/2014 17:00

Origins Laboratory, Inc.



The results in this report apply to the samples analyzed in accordance with the chain of custody document. This analytical report must be reproduced in its entirety.

Ross S Hutto For Noelle Doyle Mathis, President

LT Environmental, Inc.
4600 West 60th Avenue
Arvada CO 80003

John Cocroft
Project Number: KMG05107
Project: KMG - 1415 Corporation GU 1

www.originslaboratory.com

X404278

ORIGINS
LABORATORY, INC

page 1 of 1

Client: LT Environmental, Inc.
Address: 4600 W 60th Ave, Arvada, CO 80003
Telephone Number: 303.433.9788
Email Address:

Project Manager: John Cocroft
Project Name: 1415 Corporation GU 1
Project Number: KMG05107
Sampler Collected By: Chris Tavares

Sample ID Description	Date Sampled	Time Sampled	# of Containers	Preservative				Matrix			Analysis	Sample Instructions	
				Unpreserved	HCl	HNO ₃	Other	Groundwater	Soil	Ali Quots			Other
KMG05107-1	4/28/14	11:50	3	X				X				BTEX	1
													2
													3
													4
													5
													6
													7
													8
													9
													10

Relinquished By:	Date:	Time:	Relinquished By:	Date:	Time:	Turnaround Time:
CL	4/28/14	1700	[Signature]	4/28/14	1700	Same Day <input type="checkbox"/> 24 Hr <input type="checkbox"/> 48 Hr <input type="checkbox"/> 72 Hr <input type="checkbox"/> Standard <input checked="" type="checkbox"/>

Date Results Needed

Origins Laboratory, Inc.

[Signature]

Ross S Hutto For Noelle Doyle Mathis, President

The results in this report apply to the samples analyzed in accordance with the chain of custody document. This analytical report must be reproduced in its entirety.

LT Environmental, Inc.

4600 West 60th Avenue

Arvada

CO

80003

John Cocroft

Project Number: KMG05107

Project: KMG - 1415 Corporation GU 1

Origins Laboratory

F-012207-01-R1
Effective Date: 01/09/12

Sample Receipt Checklist

Origins Work Order X404278

Client: LTE

Client Project ID: 1415 Corporation GU #1

Checklist Completed by: Dee Smith

Shipped Via: Pick Up
(UPS, FedEx, Hand Delivered, Pick-up, etc.)

Date/Time completed: 4/29/14 8:06

Airbill #: 13h

Matrix(s) Received (Check all that apply): Soil/Solid

X Water Other (Describe)

Cooler Number/Temperature: 15.0 °C

Thermometer ID: 7002

Requirement Description	Yes	No	N/A	Comments (if any)
If samples require cooling, was the temperature between 0°C to + 6°C?	<u>X</u>			
Is there ice present (document if blue ice is used)?	<u>X</u>			
Are custody seals present on cooler? (if so, document in comments if they are signed and dated, broken or intact)		<u>X</u>		
Are custody seals present on each sample container? (if so, document in comments if they are signed and dated, broken or intact)		<u>X</u>		
Were all samples received intact?	<u>X</u>			
Was adequate sample volume provided?	<u>X</u>			
Are short holding time analytes or samples with HTs due within 48 hours present?		<u>X</u>		
Is a chain of custody (COC) present and filled out completely?	<u>X</u>			
Does the COC agree with the number and type of sample bottles received?	<u>X</u>			
Do the sample IDs on the bottle labels match the COC?	<u>X</u>			
Is the COC properly relinquished by the client with date and time recorded?	<u>X</u>			
For volatiles in water — is there headspace (> 1/2 inch bubble) present? If yes, contact client and note in narrative.		<u>X</u>		
Are samples preserved that require preservation and was it checked? (note ID of confirmation instrument used in comments) / preservation is not confirmed for subcontracted analyses in order to insure sample integrity/pH < 2 for samples preserved with HVO3, HCL, H2SO4 / (pH > 10 for samples preserved with NaAsO2+NaOH, ZnAc+NaOH)	<u>X</u>			<u>HCL</u>

If NO, then contact the client before proceeding with analysis and note date, time and person contacted as well as the corrective action to be taken in the additional comments (above) and the case narrative.

Reviewed by (Project Manager): [Signature]

Date/Time Reviewed: 4/30/14 8:30

Origins Laboratory, Inc.

The results in this report apply to the samples analyzed in accordance with the chain of custody document. This analytical report must be reproduced in its entirety.

Ross S Hutto For Noelle Doyle Mathis, President

LT Environmental, Inc.
4600 West 60th Avenue
Arvada CO 80003

John Cocroft
Project Number: KMG05107
Project: KMG - 1415 Corporation GU 1

MW04

4/28/2014 2:30:00PM

Analyte	Result	Reporting		Units	Dilution	Batch	Prepared	Analyzed	Notes
		Limit							

Origins Laboratory, Inc.
X404278-01 (Water)

BTEX by EPA 8260C

Benzene	ND	1.0	ug/L	1	4D28008	04/29/2014	04/29/2014
Toluene	ND	1.0	"	"	"	"	"
Ethylbenzene	ND	1.0	"	"	"	"	"
Xylenes, total	ND	1.0	"	"	"	"	"

Surrogate: 1,2-Dichloroethane-d4	103 %	87.3-113	"	"	"
Surrogate: Toluene-d8	99.5 %	90.9-108	"	"	"
Surrogate: 4-Bromofluorobenzene	102 %	88.6-111	"	"	"

Origins Laboratory, Inc.



The results in this report apply to the samples analyzed in accordance with the chain of custody document. This analytical report must be reproduced in its entirety.

Ross S Hutto For Noelle Doyle Mathis, President

LT Environmental, Inc.
4600 West 60th Avenue
Arvada CO 80003

John Cocroft
Project Number: KMG05107
Project: KMG - 1415 Corporation GU 1

Volatile Organic Compounds by GC/MS SW846 8260C - Quality Control
Origins Laboratory, Inc.

Analyte	Result	Reporting Limit	Units	Spike Level	Source Result	%REC	%REC Limits	RPD	RPD Limit	Notes
---------	--------	-----------------	-------	-------------	---------------	------	-------------	-----	-----------	-------

Batch 4D28008 - EPA 5030B (Water)

Blank (4D28008-BLK1)

Prepared: 04/28/2014 Analyzed: 04/29/2014

Benzene	ND	1.0	ug/L							
Toluene	ND	1.0	"							
Ethylbenzene	ND	1.0	"							
Xylenes, total	ND	1.0	"							
Surrogate: 1,2-Dichloroethane-d4	64		"	62.5		103	87.3-113			
Surrogate: Toluene-d8	63		"	62.5		100	90.9-108			
Surrogate: 4-Bromofluorobenzene	62		"	62.5		99.9	88.6-111			

Origins Laboratory, Inc.



The results in this report apply to the samples analyzed in accordance with the chain of custody document. This analytical report must be reproduced in its entirety.

Ross S Hutto For Noelle Doyle Mathis, President

LT Environmental, Inc.
4600 West 60th Avenue
Arvada CO 80003

John Cocroft
Project Number: KMG05107
Project: KMG - 1415 Corporation GU 1

Volatile Organic Compounds by GC/MS SW846 8260C - Quality Control
Origins Laboratory, Inc.

Analyte	Result	Reporting Limit	Units	Spike Level	Source Result	%REC	%REC Limits	RPD	RPD Limit	Notes
---------	--------	-----------------	-------	-------------	---------------	------	-------------	-----	-----------	-------

Batch 4D28008 - EPA 5030B (Water)

LCS (4D28008-BS1)

Prepared: 04/28/2014 Analyzed: 04/29/2014

Benzene	50.8	1.0	ug/L	50.0		102	75-126			
Toluene	47.6	1.0	"	50.0		95.2	78.7-126			
Ethylbenzene	46.0	1.0	"	50.0		92.1	81-130			
m,p-Xylene	95.9	2.0	"	100		95.9	77.2-133			
o-Xylene	48.3	1.0	"	50.0		96.5	77.9-126			
Surrogate: 1,2-Dichloroethane-d4	62		"	62.5		99.7	87.3-113			
Surrogate: Toluene-d8	62		"	62.5		99.2	90.9-108			
Surrogate: 4-Bromofluorobenzene	62		"	62.5		100	88.6-111			

Origins Laboratory, Inc.



The results in this report apply to the samples analyzed in accordance with the chain of custody document. This analytical report must be reproduced in its entirety.

Ross S Hutto For Noelle Doyle Mathis, President

LT Environmental, Inc.
4600 West 60th Avenue
Arvada CO 80003

John Cocroft
Project Number: KMG05107
Project: KMG - 1415 Corporation GU 1

Volatile Organic Compounds by GC/MS SW846 8260C - Quality Control
Origins Laboratory, Inc.

Analyte	Result	Reporting Limit	Units	Spike Level	Source Result	%REC	%REC Limits	RPD	RPD Limit	Notes
---------	--------	-----------------	-------	-------------	---------------	------	-------------	-----	-----------	-------

Batch 4D28008 - EPA 5030B (Water)

Matrix Spike (4D28008-MS1)		Source: X404263-03			Prepared: 04/28/2014 Analyzed: 04/29/2014					
Benzene	56.5	1.0	ug/L	50.0	ND	113	74-130			
Toluene	53.8	1.0	"	50.0	ND	108	73-131			
Ethylbenzene	53.1	1.0	"	50.0	ND	106	76-132			
m,p-Xylene	108	2.0	"	100	ND	108	69-139			
o-Xylene	53.9	1.0	"	50.0	ND	108	74-131			
Surrogate: 1,2-Dichloroethane-d4	62		"	62.5		98.9	87.3-113			
Surrogate: Toluene-d8	63		"	62.5		100	90.9-108			
Surrogate: 4-Bromofluorobenzene	64		"	62.5		102	88.6-111			

Origins Laboratory, Inc.



The results in this report apply to the samples analyzed in accordance with the chain of custody document. This analytical report must be reproduced in its entirety.

Ross S Hutto For Noelle Doyle Mathis, President

LT Environmental, Inc.
4600 West 60th Avenue
Arvada CO 80003

John Cocroft
Project Number: KMG05107
Project: KMG - 1415 Corporation GU 1

Volatile Organic Compounds by GC/MS SW846 8260C - Quality Control
Origins Laboratory, Inc.

Analyte	Result	Reporting Limit	Units	Spike Level	Source Result	%REC	%REC Limits	RPD	RPD Limit	Notes
---------	--------	-----------------	-------	-------------	---------------	------	-------------	-----	-----------	-------

Batch 4D28008 - EPA 5030B (Water)

Matrix Spike Dup (4D28008-MSD1)		Source: X404263-03			Prepared: 04/28/2014 Analyzed: 04/29/2014					
Benzene	55.0	1.0	ug/L	50.0	ND	110	74-130	2.62	20	
Toluene	51.8	1.0	"	50.0	ND	104	73-131	3.69	20	
Ethylbenzene	50.4	1.0	"	50.0	ND	101	76-132	5.29	20	
m,p-Xylene	104	2.0	"	100	ND	104	69-139	4.16	20	
o-Xylene	52.2	1.0	"	50.0	ND	104	74-131	3.17	20	
Surrogate: 1,2-Dichloroethane-d4	62		"	62.5		98.9	87.3-113			
Surrogate: Toluene-d8	63		"	62.5		100	90.9-108			
Surrogate: 4-Bromofluorobenzene	64		"	62.5		103	88.6-111			

Origins Laboratory, Inc.



The results in this report apply to the samples analyzed in accordance with the chain of custody document. This analytical report must be reproduced in its entirety.

Ross S Hutto For Noelle Doyle Mathis, President

LT Environmental, Inc.

4600 West 60th Avenue

Arvada CO 80003

John Cocroft

Project Number: KMG05107

Project: KMG - 1415 Corporation GU 1

Notes and Definitions

ND Analyte NOT DETECTED at or above the reporting limit

RPD Relative Percent Difference

Origins Laboratory, Inc.



The results in this report apply to the samples analyzed in accordance with the chain of custody document. This analytical report must be reproduced in its entirety.

Ross S Hutto For Noelle Doyle Mathis, President



July 16, 2014

LT Environmental, Inc.

John Cocroft

4600 West 60th Avenue

Arvada

CO 80003

Project Name - KMG - 1415 Corporation GU 1

Project Number - KMG05107

Attached are your analytical results for KMG - 1415 Corporation GU 1 received by Origins Laboratory, Inc. July 10, 2014. This project is associated with Origins project number X407074-01.

The analytical results in the following report were analyzed under the guidelines of EPA Methods. These methods are identified as follows; "SW" are defined in SW-846, "EPA" are defined in 40CFR part 136 and "SM" are defined in the most current revision of Standard Methods For the Examination of Water and Wastewater.

The analytical results apply specifically to the samples and analyses specified per the attached Chain of Custody. As such, this report shall not be reproduced except in full, without the written approval of Origin's laboratory.

Unless otherwise noted, the analytical results for all soil samples are reported on a wet weight basis. All analytical analyses were performed under NELAP guidelines unless noted by a data qualifier.

Any holding time exceedances, deviations from the method specifications or deviations from Origins Laboratory's Standard Operating Procedures are outlined in the case narrative.

Thank you for selecting Origins for your analytical needs. Please contact us with any questions concerning this report, or if we can help with anything at all.

Origins Laboratory, Inc.
303.433.1322
o-squad@oelabinc.com



1725 Elk Place, Denver, CO 80211 | Phone: 303.433.1322 | Fax: 303.265.9645

LT Environmental, Inc.
4600 West 60th Avenue
Arvada CO 80003

John Cocroft
Project Number: KMG05107
Project: KMG - 1415 Corporation GU 1

CROSS REFERENCE REPORT

Sample ID	Laboratory ID	Matrix	Date Sampled	Date Received
MW01R	X407074-01	Water	July 8, 2014 13:20	07/10/2014 17:00
MW02R	X407074-02	Water	July 8, 2014 13:10	07/10/2014 17:00
MW03	X407074-03	Water	July 8, 2014 13:30	07/10/2014 17:00
MW05	X407074-04	Water	July 8, 2014 13:00	07/10/2014 17:00
MW04	X407074-05	Water	July 9, 2014 9:30	07/10/2014 17:00

Origins Laboratory, Inc.



The results in this report apply to the samples analyzed in accordance with the chain of custody document. This analytical report must be reproduced in its entirety.

Noelle Doyle Mathis, President

LT Environmental, Inc.
4600 West 60th Avenue
Arvada CO 80003

John Cocroft
Project Number: KMG05107
Project: KMG - 1415 Corporation GU 1

Origins Laboratory

Sample Receipt Checklist

F-012207-01-R1
Effective Date: 01/09/12

Origins Work Order: X407074

Client: LTE

Client Project ID: KMG 1415 Corp GU 1

Checklist Completed by: JR

Shipped via: F/U

(UPS, FedEx, Hand Delivered, Pick up, etc.)

Date/time completed: 7/14/14 1255

Airbill #

Matrix(es) Received (Check all that apply)

Soil/Solid

☒ Water

Other

Cooler Number/Temperature

5.9 °C

(Describe)

Thermometer ID

T002

Requirement Description	Yes	No	N/A	Comments (if any)
If samples require cooling, was the temperature between 0°C to ≤ 6°C? ^{1/2}	<input checked="" type="checkbox"/>			
Is there ice present (document if blue ice is used)?	<input checked="" type="checkbox"/>			
Are custody seals present on cooler? (if no, document in comments if they are signed and dated, broken or intact)		<input checked="" type="checkbox"/>		
Are custody seals present on each sample container? (if so, document in comments if they are signed and dated, broken or intact)		<input checked="" type="checkbox"/>		
Were all samples received intact? ^{1/2}	<input checked="" type="checkbox"/>			
Was adequate sample volume provided? ^{1/2}	<input checked="" type="checkbox"/>			
Are short holding time analytes or samples with HTs due within 48 hours present? ^{1/2}		<input checked="" type="checkbox"/>		
Is a chain-of-custody (COC) present and filled out completely? ^{1/2}	<input checked="" type="checkbox"/>			
Does the COC agree with the number and type of sample bottles received? ^{1/2}	<input checked="" type="checkbox"/>			
Do the sample IDs on the bottle labels match the COC? ^{1/2}	<input checked="" type="checkbox"/>			
Is the COC properly relinquished by the client with date and time recorded? ^{1/2}	<input checked="" type="checkbox"/>			
For volatiles in water - is there headspace (> 3/4 inch bubbles) present? If yes, contact client and note in narrative.		<input checked="" type="checkbox"/>		
Are samples preserved that require preservation and was it checked? ^{1/2} (note ID of confirmation instrument used in comments) / (preservation is not confirmed for subcontracted analyses in order to ensure sample integrity) ^{1/2} for samples preserved with HNO ₃ , HCl, H ₂ SO ₄ / (pH > 10 for samples preserved with NaOH/Na ₂ CO ₃ -NaOH, 2.0M-NaOH)	<input checked="" type="checkbox"/>			HCL
Additional Comments (if any):				

^{1/2} If NO, then contact the client before proceeding with analysis and note date/time and person contacted as well as the corrective action to be taken in the additional comments above, and the case is resolved.

Reviewed by (Project Manager)

7/15/14 1350
Date/Time Reviewed

Origins Laboratory, Inc.

The results in this report apply to the samples analyzed in accordance with the chain of custody document. This analytical report must be reproduced in its entirety.

Noelle Doyle Mathis, President

LT Environmental, Inc.
4600 West 60th Avenue
Arvada CO 80003

John Cocroft
Project Number: KMG05107
Project: KMG - 1415 Corporation GU 1

MW01R

7/8/2014 1:20:00PM

Analyte	Result	Reporting Limit	Units	Dilution	Batch	Prepared	Analyzed	Notes
---------	--------	-----------------	-------	----------	-------	----------	----------	-------

Origins Laboratory, Inc.
X407074-01 (Water)

BTEX by EPA 8260C

Benzene	ND	1.0	ug/L	1	4G11013	07/11/2014	07/14/2014
Toluene	ND	1.0	"	"	"	"	"
Ethylbenzene	ND	1.0	"	"	"	"	"
Xylenes, total	ND	1.0	"	"	"	"	"

Surrogate: 1,2-Dichloroethane-d4	105 %	87.3-113			"	"	"
Surrogate: Toluene-d8	101 %	90.9-108			"	"	"
Surrogate: 4-Bromofluorobenzene	102 %	88.6-111			"	"	"

Origins Laboratory, Inc.



The results in this report apply to the samples analyzed in accordance with the chain of custody document. This analytical report must be reproduced in its entirety.

Noelle Doyle Mathis, President

LT Environmental, Inc.
4600 West 60th Avenue
Arvada CO 80003

John Cocroft
Project Number: KMG05107
Project: KMG - 1415 Corporation GU 1

MW02R

7/8/2014 1:10:00PM

Analyte	Result	Reporting Limit	Units	Dilution	Batch	Prepared	Analyzed	Notes
---------	--------	-----------------	-------	----------	-------	----------	----------	-------

Origins Laboratory, Inc.
X407074-02 (Water)

BTEX by EPA 8260C

Benzene	ND	1.0	ug/L	1	4G11013	07/11/2014	07/14/2014
Toluene	ND	1.0	"	"	"	"	"
Ethylbenzene	ND	1.0	"	"	"	"	"
Xylenes, total	ND	1.0	"	"	"	"	"

Surrogate: 1,2-Dichloroethane-d4	106 %	87.3-113			"	"	"
Surrogate: Toluene-d8	98.4 %	90.9-108			"	"	"
Surrogate: 4-Bromofluorobenzene	103 %	88.6-111			"	"	"

Origins Laboratory, Inc.



The results in this report apply to the samples analyzed in accordance with the chain of custody document. This analytical report must be reproduced in its entirety.

Noelle Doyle Mathis, President

LT Environmental, Inc.
4600 West 60th Avenue
Arvada CO 80003

John Cocroft
Project Number: KMG05107
Project: KMG - 1415 Corporation GU 1

MW03

7/8/2014 1:30:00PM

Analyte	Result	Reporting Limit	Units	Dilution	Batch	Prepared	Analyzed	Notes
---------	--------	-----------------	-------	----------	-------	----------	----------	-------

Origins Laboratory, Inc.
X407074-03 (Water)

BTEX by EPA 8260C

Benzene	ND	1.0	ug/L	1	4G11013	07/11/2014	07/14/2014
Toluene	ND	1.0	"	"	"	"	"
Ethylbenzene	ND	1.0	"	"	"	"	"
Xylenes, total	ND	1.0	"	"	"	"	"

Surrogate: 1,2-Dichloroethane-d4	106 %	87.3-113			"	"	"
Surrogate: Toluene-d8	99.3 %	90.9-108			"	"	"
Surrogate: 4-Bromofluorobenzene	104 %	88.6-111			"	"	"

Origins Laboratory, Inc.



The results in this report apply to the samples analyzed in accordance with the chain of custody document. This analytical report must be reproduced in its entirety.

Noelle Doyle Mathis, President

LT Environmental, Inc.
4600 West 60th Avenue
Arvada CO 80003

John Cocroft
Project Number: KMG05107
Project: KMG - 1415 Corporation GU 1

MW05

7/8/2014 1:00:00PM

Analyte	Result	Reporting Limit	Units	Dilution	Batch	Prepared	Analyzed	Notes
---------	--------	-----------------	-------	----------	-------	----------	----------	-------

Origins Laboratory, Inc.
X407074-04 (Water)

BTEX by EPA 8260C

Benzene	ND	1.0	ug/L	1	4G11013	07/11/2014	07/14/2014
Toluene	ND	1.0	"	"	"	"	"
Ethylbenzene	ND	1.0	"	"	"	"	"
Xylenes, total	ND	1.0	"	"	"	"	"

Surrogate: 1,2-Dichloroethane-d4	105 %	87.3-113	"	"	"
Surrogate: Toluene-d8	99.6 %	90.9-108	"	"	"
Surrogate: 4-Bromofluorobenzene	101 %	88.6-111	"	"	"

Origins Laboratory, Inc.



The results in this report apply to the samples analyzed in accordance with the chain of custody document. This analytical report must be reproduced in its entirety.

Noelle Doyle Mathis, President

LT Environmental, Inc.
4600 West 60th Avenue
Arvada CO 80003

John Cocroft
Project Number: KMG05107
Project: KMG - 1415 Corporation GU 1

MW04

7/9/2014 9:30:00AM

Analyte	Result	Reporting Limit	Units	Dilution	Batch	Prepared	Analyzed	Notes
---------	--------	-----------------	-------	----------	-------	----------	----------	-------

Origins Laboratory, Inc.
X407074-05 (Water)

BTEX by EPA 8260C

Benzene	ND	1.0	ug/L	1	4G11013	07/11/2014	07/14/2014
Toluene	ND	1.0	"	"	"	"	"
Ethylbenzene	ND	1.0	"	"	"	"	"
Xylenes, total	ND	1.0	"	"	"	"	"

Surrogate: 1,2-Dichloroethane-d4	105 %	87.3-113			"	"	"
Surrogate: Toluene-d8	98.9 %	90.9-108			"	"	"
Surrogate: 4-Bromofluorobenzene	102 %	88.6-111			"	"	"

Origins Laboratory, Inc.



The results in this report apply to the samples analyzed in accordance with the chain of custody document. This analytical report must be reproduced in its entirety.

Noelle Doyle Mathis, President

LT Environmental, Inc.
4600 West 60th Avenue
Arvada CO 80003

John Cocroft
Project Number: KMG05107
Project: KMG - 1415 Corporation GU 1

Volatile Organic Compounds by GC/MS SW846 8260C - Quality Control
Origins Laboratory, Inc.

Analyte	Result	Reporting Limit	Units	Spike Level	Source Result	%REC	%REC Limits	RPD	RPD Limit	Notes
---------	--------	-----------------	-------	-------------	---------------	------	-------------	-----	-----------	-------

Batch 4G11013 - EPA 5030B (Water)

Blank (4G11013-BLK1)

Prepared: 07/11/2014 Analyzed: 07/14/2014

Benzene	ND	1.0	ug/L							
Toluene	ND	1.0	"							
Ethylbenzene	ND	1.0	"							
Xylenes, total	ND	1.0	"							
Surrogate: 1,2-Dichloroethane-d4	53		"	62.5		84.9	87.3-113			
Surrogate: Toluene-d8	68		"	62.5		108	90.9-108			
Surrogate: 4-Bromofluorobenzene	63		"	62.5		101	88.6-111			

Origins Laboratory, Inc.



The results in this report apply to the samples analyzed in accordance with the chain of custody document. This analytical report must be reproduced in its entirety.

Noelle Doyle Mathis, President

LT Environmental, Inc.
4600 West 60th Avenue
Arvada CO 80003

John Cocroft
Project Number: KMG05107
Project: KMG - 1415 Corporation GU 1

Volatile Organic Compounds by GC/MS SW846 8260C - Quality Control
Origins Laboratory, Inc.

Analyte	Result	Reporting Limit	Units	Spike Level	Source Result	%REC	%REC Limits	RPD	RPD Limit	Notes
---------	--------	-----------------	-------	-------------	---------------	------	-------------	-----	-----------	-------

Batch 4G11013 - EPA 5030B (Water)

LCS (4G11013-BS1)

Prepared: 07/11/2014 Analyzed: 07/14/2014

Benzene	52.3	1.0	ug/L	50.0		105	75-126			
Toluene	51.2	1.0	"	50.0		102	78.7-126			
Ethylbenzene	51.4	1.0	"	50.0		103	81-130			
m,p-Xylene	102	2.0	"	100		102	77.2-133			
o-Xylene	50.1	1.0	"	50.0		100	77.9-126			
Surrogate: 1,2-Dichloroethane-d4	58		"	62.5		92.3	87.3-113			
Surrogate: Toluene-d8	63		"	62.5		101	90.9-108			
Surrogate: 4-Bromofluorobenzene	63		"	62.5		101	88.6-111			

Origins Laboratory, Inc.



The results in this report apply to the samples analyzed in accordance with the chain of custody document. This analytical report must be reproduced in its entirety.

Noelle Doyle Mathis, President

LT Environmental, Inc.
4600 West 60th Avenue
Arvada CO 80003

John Cocroft
Project Number: KMG05107
Project: KMG - 1415 Corporation GU 1

Volatile Organic Compounds by GC/MS SW846 8260C - Quality Control
Origins Laboratory, Inc.

Analyte	Result	Reporting Limit	Units	Spike Level	Source Result	%REC	%REC Limits	RPD	RPD Limit	Notes
---------	--------	-----------------	-------	-------------	---------------	------	-------------	-----	-----------	-------

Batch 4G11013 - EPA 5030B (Water)

Matrix Spike (4G11013-MS1)		Source: X407073-01			Prepared: 07/11/2014 Analyzed: 07/14/2014					
Benzene	56.2	1.0	ug/L	50.0	ND	112	74-130			
Toluene	55.2	1.0	"	50.0	ND	110	73-131			
Ethylbenzene	55.6	1.0	"	50.0	ND	111	76-132			
m,p-Xylene	110	2.0	"	100	ND	110	69-139			
o-Xylene	53.6	1.0	"	50.0	ND	107	74-131			
Surrogate: 1,2-Dichloroethane-d4	57		"	62.5		91.4	87.3-113			
Surrogate: Toluene-d8	64		"	62.5		102	90.9-108			
Surrogate: 4-Bromofluorobenzene	61		"	62.5		97.3	88.6-111			

Origins Laboratory, Inc.



The results in this report apply to the samples analyzed in accordance with the chain of custody document. This analytical report must be reproduced in its entirety.

Noelle Doyle Mathis, President

LT Environmental, Inc.
4600 West 60th Avenue
Arvada CO 80003

John Cocroft
Project Number: KMG05107
Project: KMG - 1415 Corporation GU 1

Volatile Organic Compounds by GC/MS SW846 8260C - Quality Control
Origins Laboratory, Inc.

Analyte	Result	Reporting Limit	Units	Spike Level	Source Result	%REC	%REC Limits	RPD	RPD Limit	Notes
---------	--------	-----------------	-------	-------------	---------------	------	-------------	-----	-----------	-------

Batch 4G11013 - EPA 5030B (Water)

Matrix Spike Dup (4G11013-MSD1)		Source: X407073-01			Prepared: 07/11/2014 Analyzed: 07/14/2014					
Benzene	53.0	1.0	ug/L	50.0	ND	106	74-130	5.97	20	
Toluene	52.1	1.0	"	50.0	ND	104	73-131	5.65	20	
Ethylbenzene	52.8	1.0	"	50.0	ND	106	76-132	5.26	20	
m,p-Xylene	104	2.0	"	100	ND	104	69-139	6.03	20	
o-Xylene	51.8	1.0	"	50.0	ND	104	74-131	3.32	20	
Surrogate: 1,2-Dichloroethane-d4	56		"	62.5		90.4	87.3-113			
Surrogate: Toluene-d8	64		"	62.5		103	90.9-108			
Surrogate: 4-Bromofluorobenzene	61		"	62.5		97.5	88.6-111			

Origins Laboratory, Inc.



The results in this report apply to the samples analyzed in accordance with the chain of custody document. This analytical report must be reproduced in its entirety.

Noelle Doyle Mathis, President

LT Environmental, Inc.

4600 West 60th Avenue

Arvada CO 80003

John Cocroft

Project Number: KMG05107

Project: KMG - 1415 Corporation GU 1

Notes and Definitions

ND Analyte NOT DETECTED at or above the reporting limit

RPD Relative Percent Difference

All soil results are reported at a wet weight basis.

Origins Laboratory, Inc.



The results in this report apply to the samples analyzed in accordance with the chain of custody document. This analytical report must be reproduced in its entirety.

Noelle Doyle Mathis, President