

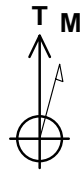
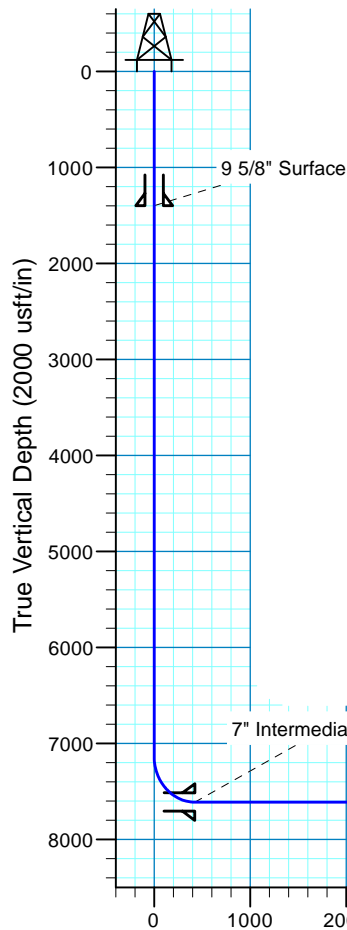
# Critter Creek 546-2109H

Sec.21-T11N-R63W  
Weld County, Colorado

## Surface Location

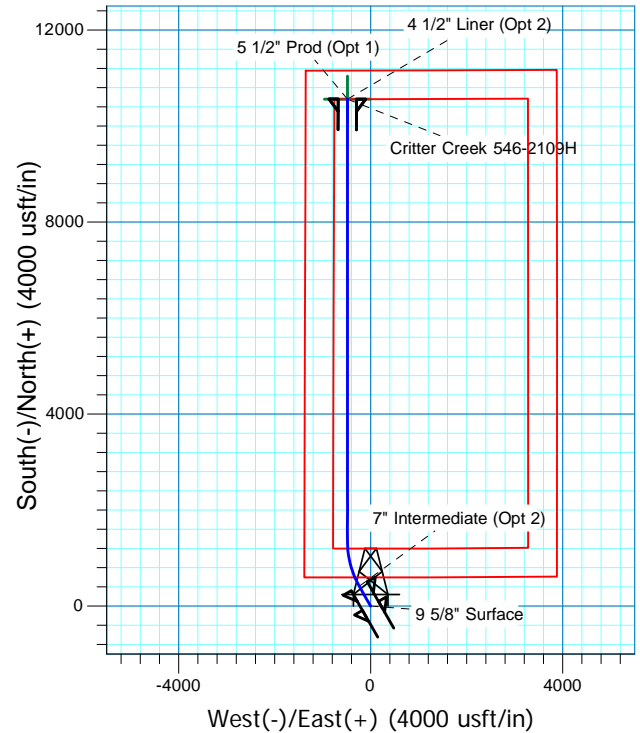
NAD 1927 (NADCON CONUS) Colorado North 501  
Ground Elevation: 5256.0 RKB @ 5281.0usft (KB GL+25')

Northing	Easting	Latitude	Longitude
577357.02	2292429.09	40° 54' 48.429 N	104° 26' 31.251 W

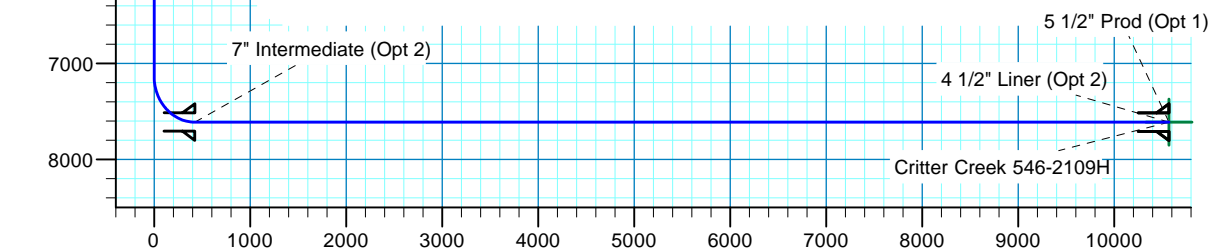


Azimuths to True North  
Magnetic North: 8.29°

Magnetic Field  
Strength: 52909.6snT  
Dip Angle: 67.36°  
Date: 7/8/2015  
Model: IGRF2015



Project: DJ - Hereford Ranch  
Site: Critter Creek C21 NENW  
Well: Critter Creek 546-2109H  
Plan: APD Plan (Plat Cert 4/10/15)



Vertical Section at 357.39° (2000 usft/in)

## SECTION DETAILS

Sec	MD	Inc	Azi	TVD	+N/-S	+E/-W	Dleg	TFace	VSect	Target
1	0.0	0.00	0.00	0.0	0.0	0.0	0.00	0.00	0.0	
2	7135.5	0.00	0.00	7135.5	0.0	0.0	0.00	0.00	0.0	
3	7885.5	90.00	330.50	7613.0	415.6	-235.1	12.00	330.50	425.9	
4	8869.0	90.00	0.00	7613.0	1356.2	-482.7	3.00	90.00	1376.8	Critter Creek 546-2109H
5	18073.6	90.00	0.00	7613.0	10560.8	-482.0	0.00	0.00	10571.8	Critter Creek 546-2109H

## TARGET DETAILS

Name	TVD	+N/-S	+E/-W	Northing	Easting	Latitude	Longitude	Shape
Critter Creek 546-2109H	7613.0	10560.8	-482.0	587911.29	2291821.08	40° 56' 32.776 N	104° 26' 37.532 W	Point

# **Denver Division- Colorado**

**DJ - Hereford Ranch  
Crittter Creek C21 NENW  
Crittter Creek 546-2109H**

**OH**

**Plan: APD Plan (Plat Cert 4/10/15)**

## **Standard Planning Report**

**08 July, 2015**

# EOG Resources, Inc.

## Planning Report

<b>Database:</b>	EDM_DENVER	<b>Local Co-ordinate Reference:</b>	Well Critter Creek 546-2109H
<b>Company:</b>	Denver Division- Colorado	<b>TVD Reference:</b>	RKB @ 5281.0usft (KB GL+25')
<b>Project:</b>	DJ - Hereford Ranch	<b>MD Reference:</b>	RKB @ 5281.0usft (KB GL+25')
<b>Site:</b>	Critter Creek C21 NENW	<b>North Reference:</b>	True
<b>Well:</b>	Critter Creek 546-2109H	<b>Survey Calculation Method:</b>	Minimum Curvature
<b>Wellbore:</b>	OH		
<b>Design:</b>	APD Plan (Plat Cert 4/10/15)		

<b>Project</b>	DJ - Hereford Ranch, Weld County		
<b>Map System:</b>	US State Plane 1927 (Exact solution)	<b>System Datum:</b>	Mean Sea Level
<b>Geo Datum:</b>	NAD 1927 (NADCON CONUS)		
<b>Map Zone:</b>	Colorado North 501		

<b>Site</b>	Critter Creek C21 NENW		
<b>Site Position:</b>		<b>Northing:</b>	577,300.00 usft
<b>From:</b>	Map	<b>Easting:</b>	2,293,200.00 usft
<b>Position Uncertainty:</b>	0.0 usft	<b>Slot Radius:</b>	13-3/16 "
		<b>Latitude:</b>	40° 54' 47.775 N
		<b>Longitude:</b>	104° 26' 21.220 W
		<b>Grid Convergence:</b>	0.69 °

<b>Well</b>	Critter Creek 546-2109H		
<b>Well Position</b>	<b>+N/-S</b>	66.2 usft	<b>Northing:</b>
	<b>+E/-W</b>	-770.2 usft	<b>Easting:</b>
<b>Position Uncertainty</b>	0.0 usft		<b>Wellhead Elevation:</b>
			<b>Latitude:</b>
			<b>Longitude:</b>
			<b>Ground Level:</b>

<b>Wellbore</b>	OH		
<b>Magnetics</b>	<b>Model Name</b>	<b>Sample Date</b>	<b>Declination</b>
			(°)
	IGRF2015	7/8/2015	8.29
			<b>Dip Angle</b>
			(°)
			67.36
			<b>Field Strength</b>
			(nT)
			52,910

<b>Design</b>	APD Plan (Plat Cert 4/10/15)		
<b>Audit Notes:</b>			
<b>Version:</b>	<b>Phase:</b>	PROTOTYPE	<b>Tie On Depth:</b>
			0.0
<b>Vertical Section:</b>	<b>Depth From (TVD)</b>	<b>+N/-S</b>	<b>+E/-W</b>
	(usft)	(usft)	(usft)
	0.0	0.0	0.0
			<b>Direction</b>
			(°)
			357.39

<b>Plan Sections</b>										
<b>Measured</b>	<b>Inclination</b>	<b>Azimuth</b>	<b>Vertical</b>	<b>+N/-S</b>	<b>+E/-W</b>	<b>Dogleg</b>	<b>Build</b>	<b>Turn</b>	<b>TFO</b>	<b>Target</b>
<b>Depth</b>	(°)	(°)	<b>Depth</b>	(usft)	(usft)	<b>Rate</b>	<b>Rate</b>	<b>Rate</b>	(°)	
(usft)			(usft)			(°/100usft)	(°/100usft)	(°/100usft)		
0.0	0.00	0.00	0.0	0.0	0.0	0.00	0.00	0.00	0.00	
7,135.5	0.00	0.00	7,135.5	0.0	0.0	0.00	0.00	0.00	0.00	
7,885.5	90.00	330.50	7,613.0	415.6	-235.1	12.00	12.00	0.00	330.50	
8,869.0	90.00	0.00	7,613.0	1,356.2	-482.7	3.00	0.00	3.00	90.00	Critter Creek 546-210
18,073.6	90.00	0.00	7,613.0	10,560.8	-482.0	0.00	0.00	0.00	0.00	Critter Creek 546-210

# EOG Resources, Inc.

## Planning Report

<b>Database:</b>	EDM_DENVER	<b>Local Co-ordinate Reference:</b>	Well Critter Creek 546-2109H
<b>Company:</b>	Denver Division- Colorado	<b>TVD Reference:</b>	RKB @ 5281.0usft (KB GL+25')
<b>Project:</b>	DJ - Hereford Ranch	<b>MD Reference:</b>	RKB @ 5281.0usft (KB GL+25')
<b>Site:</b>	Critter Creek C21 NENW	<b>North Reference:</b>	True
<b>Well:</b>	Critter Creek 546-2109H	<b>Survey Calculation Method:</b>	Minimum Curvature
<b>Wellbore:</b>	OH		
<b>Design:</b>	APD Plan (Plat Cert 4/10/15)		

Planned Survey									
Measured Depth (usft)	Inclination (°)	Azimuth (°)	Vertical Depth (usft)	+N/-S (usft)	+E/-W (usft)	Vertical Section (usft)	Dogleg Rate (°/100usft)	Build Rate (°/100usft)	Turn Rate (°/100usft)
0.0	0.00	0.00	0.0	0.0	0.0	0.0	0.00	0.00	0.00
100.0	0.00	0.00	100.0	0.0	0.0	0.0	0.00	0.00	0.00
200.0	0.00	0.00	200.0	0.0	0.0	0.0	0.00	0.00	0.00
300.0	0.00	0.00	300.0	0.0	0.0	0.0	0.00	0.00	0.00
400.0	0.00	0.00	400.0	0.0	0.0	0.0	0.00	0.00	0.00
500.0	0.00	0.00	500.0	0.0	0.0	0.0	0.00	0.00	0.00
600.0	0.00	0.00	600.0	0.0	0.0	0.0	0.00	0.00	0.00
700.0	0.00	0.00	700.0	0.0	0.0	0.0	0.00	0.00	0.00
800.0	0.00	0.00	800.0	0.0	0.0	0.0	0.00	0.00	0.00
900.0	0.00	0.00	900.0	0.0	0.0	0.0	0.00	0.00	0.00
1,000.0	0.00	0.00	1,000.0	0.0	0.0	0.0	0.00	0.00	0.00
1,100.0	0.00	0.00	1,100.0	0.0	0.0	0.0	0.00	0.00	0.00
1,200.0	0.00	0.00	1,200.0	0.0	0.0	0.0	0.00	0.00	0.00
1,300.0	0.00	0.00	1,300.0	0.0	0.0	0.0	0.00	0.00	0.00
1,399.0	0.00	0.00	1,399.0	0.0	0.0	0.0	0.00	0.00	0.00
9 5/8" Surface									
1,400.0	0.00	0.00	1,400.0	0.0	0.0	0.0	0.00	0.00	0.00
1,500.0	0.00	0.00	1,500.0	0.0	0.0	0.0	0.00	0.00	0.00
1,600.0	0.00	0.00	1,600.0	0.0	0.0	0.0	0.00	0.00	0.00
1,700.0	0.00	0.00	1,700.0	0.0	0.0	0.0	0.00	0.00	0.00
1,800.0	0.00	0.00	1,800.0	0.0	0.0	0.0	0.00	0.00	0.00
1,900.0	0.00	0.00	1,900.0	0.0	0.0	0.0	0.00	0.00	0.00
2,000.0	0.00	0.00	2,000.0	0.0	0.0	0.0	0.00	0.00	0.00
2,100.0	0.00	0.00	2,100.0	0.0	0.0	0.0	0.00	0.00	0.00
2,200.0	0.00	0.00	2,200.0	0.0	0.0	0.0	0.00	0.00	0.00
2,300.0	0.00	0.00	2,300.0	0.0	0.0	0.0	0.00	0.00	0.00
2,400.0	0.00	0.00	2,400.0	0.0	0.0	0.0	0.00	0.00	0.00
2,500.0	0.00	0.00	2,500.0	0.0	0.0	0.0	0.00	0.00	0.00
2,600.0	0.00	0.00	2,600.0	0.0	0.0	0.0	0.00	0.00	0.00
2,700.0	0.00	0.00	2,700.0	0.0	0.0	0.0	0.00	0.00	0.00
2,800.0	0.00	0.00	2,800.0	0.0	0.0	0.0	0.00	0.00	0.00
2,900.0	0.00	0.00	2,900.0	0.0	0.0	0.0	0.00	0.00	0.00
3,000.0	0.00	0.00	3,000.0	0.0	0.0	0.0	0.00	0.00	0.00
3,100.0	0.00	0.00	3,100.0	0.0	0.0	0.0	0.00	0.00	0.00
3,200.0	0.00	0.00	3,200.0	0.0	0.0	0.0	0.00	0.00	0.00
3,300.0	0.00	0.00	3,300.0	0.0	0.0	0.0	0.00	0.00	0.00
3,400.0	0.00	0.00	3,400.0	0.0	0.0	0.0	0.00	0.00	0.00
3,500.0	0.00	0.00	3,500.0	0.0	0.0	0.0	0.00	0.00	0.00
3,600.0	0.00	0.00	3,600.0	0.0	0.0	0.0	0.00	0.00	0.00
3,700.0	0.00	0.00	3,700.0	0.0	0.0	0.0	0.00	0.00	0.00
3,800.0	0.00	0.00	3,800.0	0.0	0.0	0.0	0.00	0.00	0.00
3,900.0	0.00	0.00	3,900.0	0.0	0.0	0.0	0.00	0.00	0.00
4,000.0	0.00	0.00	4,000.0	0.0	0.0	0.0	0.00	0.00	0.00
4,100.0	0.00	0.00	4,100.0	0.0	0.0	0.0	0.00	0.00	0.00
4,200.0	0.00	0.00	4,200.0	0.0	0.0	0.0	0.00	0.00	0.00
4,300.0	0.00	0.00	4,300.0	0.0	0.0	0.0	0.00	0.00	0.00
4,400.0	0.00	0.00	4,400.0	0.0	0.0	0.0	0.00	0.00	0.00
4,500.0	0.00	0.00	4,500.0	0.0	0.0	0.0	0.00	0.00	0.00
4,600.0	0.00	0.00	4,600.0	0.0	0.0	0.0	0.00	0.00	0.00
4,700.0	0.00	0.00	4,700.0	0.0	0.0	0.0	0.00	0.00	0.00
4,800.0	0.00	0.00	4,800.0	0.0	0.0	0.0	0.00	0.00	0.00
4,900.0	0.00	0.00	4,900.0	0.0	0.0	0.0	0.00	0.00	0.00
5,000.0	0.00	0.00	5,000.0	0.0	0.0	0.0	0.00	0.00	0.00
5,100.0	0.00	0.00	5,100.0	0.0	0.0	0.0	0.00	0.00	0.00

# EOG Resources, Inc.

## Planning Report

<b>Database:</b>	EDM_DENVER	<b>Local Co-ordinate Reference:</b>	Well Critter Creek 546-2109H
<b>Company:</b>	Denver Division- Colorado	<b>TVD Reference:</b>	RKB @ 5281.0usft (KB GL+25')
<b>Project:</b>	DJ - Hereford Ranch	<b>MD Reference:</b>	RKB @ 5281.0usft (KB GL+25')
<b>Site:</b>	Critter Creek C21 NENW	<b>North Reference:</b>	True
<b>Well:</b>	Critter Creek 546-2109H	<b>Survey Calculation Method:</b>	Minimum Curvature
<b>Wellbore:</b>	OH		
<b>Design:</b>	APD Plan (Plat Cert 4/10/15)		

Planned Survey									
Measured Depth (usft)	Inclination (°)	Azimuth (°)	Vertical Depth (usft)	+N/-S (usft)	+E/-W (usft)	Vertical Section (usft)	Dogleg Rate (°/100usft)	Build Rate (°/100usft)	Turn Rate (°/100usft)
5,200.0	0.00	0.00	5,200.0	0.0	0.0	0.0	0.00	0.00	0.00
5,300.0	0.00	0.00	5,300.0	0.0	0.0	0.0	0.00	0.00	0.00
5,400.0	0.00	0.00	5,400.0	0.0	0.0	0.0	0.00	0.00	0.00
5,500.0	0.00	0.00	5,500.0	0.0	0.0	0.0	0.00	0.00	0.00
5,600.0	0.00	0.00	5,600.0	0.0	0.0	0.0	0.00	0.00	0.00
5,700.0	0.00	0.00	5,700.0	0.0	0.0	0.0	0.00	0.00	0.00
5,800.0	0.00	0.00	5,800.0	0.0	0.0	0.0	0.00	0.00	0.00
5,900.0	0.00	0.00	5,900.0	0.0	0.0	0.0	0.00	0.00	0.00
6,000.0	0.00	0.00	6,000.0	0.0	0.0	0.0	0.00	0.00	0.00
6,100.0	0.00	0.00	6,100.0	0.0	0.0	0.0	0.00	0.00	0.00
6,200.0	0.00	0.00	6,200.0	0.0	0.0	0.0	0.00	0.00	0.00
6,300.0	0.00	0.00	6,300.0	0.0	0.0	0.0	0.00	0.00	0.00
6,400.0	0.00	0.00	6,400.0	0.0	0.0	0.0	0.00	0.00	0.00
6,500.0	0.00	0.00	6,500.0	0.0	0.0	0.0	0.00	0.00	0.00
6,600.0	0.00	0.00	6,600.0	0.0	0.0	0.0	0.00	0.00	0.00
6,700.0	0.00	0.00	6,700.0	0.0	0.0	0.0	0.00	0.00	0.00
6,800.0	0.00	0.00	6,800.0	0.0	0.0	0.0	0.00	0.00	0.00
6,900.0	0.00	0.00	6,900.0	0.0	0.0	0.0	0.00	0.00	0.00
7,000.0	0.00	0.00	7,000.0	0.0	0.0	0.0	0.00	0.00	0.00
7,100.0	0.00	0.00	7,100.0	0.0	0.0	0.0	0.00	0.00	0.00
7,135.5	0.00	0.00	7,135.5	0.0	0.0	0.0	0.00	0.00	0.00
7,200.0	7.74	330.50	7,199.8	3.8	-2.1	3.9	12.00	12.00	0.00
7,300.0	19.74	330.50	7,296.8	24.4	-13.8	25.0	12.00	12.00	0.00
7,400.0	31.74	330.50	7,386.7	62.2	-35.2	63.7	12.00	12.00	0.00
7,500.0	43.74	330.50	7,465.6	115.3	-65.2	118.2	12.00	12.00	0.00
7,600.0	55.74	330.50	7,530.1	181.6	-102.8	186.1	12.00	12.00	0.00
7,700.0	67.74	330.50	7,577.4	258.1	-146.1	264.5	12.00	12.00	0.00
7,800.0	79.74	330.50	7,605.3	341.5	-193.2	350.0	12.00	12.00	0.00
7,885.0	89.94	330.50	7,613.0	415.1	-234.9	425.4	12.00	12.00	0.00
7" Intermediate (Opt 2)									
7,885.5	90.00	330.50	7,613.0	415.6	-235.1	425.9	12.00	12.00	0.00
7,900.0	90.00	330.94	7,613.0	428.2	-242.2	438.8	3.00	0.00	3.00
8,000.0	90.00	333.94	7,613.0	516.8	-288.5	529.5	3.00	0.00	3.00
8,100.0	90.00	336.94	7,613.0	607.8	-330.0	622.2	3.00	0.00	3.00
8,200.0	90.00	339.94	7,613.0	700.8	-366.8	716.8	3.00	0.00	3.00
8,300.0	90.00	342.94	7,613.0	795.6	-398.6	812.9	3.00	0.00	3.00
8,400.0	90.00	345.94	7,613.0	891.9	-425.5	910.4	3.00	0.00	3.00
8,500.0	90.00	348.94	7,613.0	989.5	-447.2	1,008.8	3.00	0.00	3.00
8,600.0	90.00	351.94	7,613.0	1,088.1	-463.8	1,108.1	3.00	0.00	3.00
8,700.0	90.00	354.94	7,613.0	1,187.4	-475.3	1,207.8	3.00	0.00	3.00
8,800.0	90.00	357.94	7,613.0	1,287.2	-481.5	1,307.8	3.00	0.00	3.00
8,869.0	90.00	0.00	7,613.0	1,356.2	-482.7	1,376.8	3.00	0.00	3.00
8,900.0	90.00	0.00	7,613.0	1,387.2	-482.7	1,407.8	0.00	0.00	0.00
9,000.0	90.00	0.00	7,613.0	1,487.2	-482.7	1,507.7	0.00	0.00	0.00
9,100.0	90.00	0.00	7,613.0	1,587.2	-482.7	1,607.5	0.00	0.00	0.00
9,200.0	90.00	0.00	7,613.0	1,687.2	-482.7	1,707.4	0.00	0.00	0.00
9,300.0	90.00	0.00	7,613.0	1,787.2	-482.7	1,807.3	0.00	0.00	0.00
9,400.0	90.00	0.00	7,613.0	1,887.2	-482.7	1,907.2	0.00	0.00	0.00
9,500.0	90.00	0.00	7,613.0	1,987.2	-482.7	2,007.1	0.00	0.00	0.00
9,600.0	90.00	0.00	7,613.0	2,087.2	-482.7	2,107.0	0.00	0.00	0.00
9,700.0	90.00	0.00	7,613.0	2,187.2	-482.7	2,206.9	0.00	0.00	0.00
9,800.0	90.00	0.00	7,613.0	2,287.2	-482.6	2,306.8	0.00	0.00	0.00
9,900.0	90.00	0.00	7,613.0	2,387.2	-482.6	2,406.7	0.00	0.00	0.00

# EOG Resources, Inc.

## Planning Report

<b>Database:</b>	EDM_DENVER	<b>Local Co-ordinate Reference:</b>	Well Critter Creek 546-2109H
<b>Company:</b>	Denver Division- Colorado	<b>TVD Reference:</b>	RKB @ 5281.0usft (KB GL+25')
<b>Project:</b>	DJ - Hereford Ranch	<b>MD Reference:</b>	RKB @ 5281.0usft (KB GL+25')
<b>Site:</b>	Critter Creek C21 NENW	<b>North Reference:</b>	True
<b>Well:</b>	Critter Creek 546-2109H	<b>Survey Calculation Method:</b>	Minimum Curvature
<b>Wellbore:</b>	OH		
<b>Design:</b>	APD Plan (Plat Cert 4/10/15)		

Planned Survey									
Measured Depth (usft)	Inclination (°)	Azimuth (°)	Vertical Depth (usft)	+N/-S (usft)	+E/-W (usft)	Vertical Section (usft)	Dogleg Rate (°/100usft)	Build Rate (°/100usft)	Turn Rate (°/100usft)
10,000.0	90.00	0.00	7,613.0	2,487.2	-482.6	2,506.6	0.00	0.00	0.00
10,100.0	90.00	0.00	7,613.0	2,587.2	-482.6	2,606.5	0.00	0.00	0.00
10,200.0	90.00	0.00	7,613.0	2,687.2	-482.6	2,706.4	0.00	0.00	0.00
10,300.0	90.00	0.00	7,613.0	2,787.2	-482.6	2,806.3	0.00	0.00	0.00
10,400.0	90.00	0.00	7,613.0	2,887.2	-482.6	2,906.2	0.00	0.00	0.00
10,500.0	90.00	0.00	7,613.0	2,987.2	-482.6	3,006.1	0.00	0.00	0.00
10,600.0	90.00	0.00	7,613.0	3,087.2	-482.6	3,106.0	0.00	0.00	0.00
10,700.0	90.00	0.00	7,613.0	3,187.2	-482.6	3,205.9	0.00	0.00	0.00
10,800.0	90.00	0.00	7,613.0	3,287.2	-482.6	3,305.8	0.00	0.00	0.00
10,900.0	90.00	0.00	7,613.0	3,387.2	-482.6	3,405.7	0.00	0.00	0.00
11,000.0	90.00	0.00	7,613.0	3,487.2	-482.6	3,505.6	0.00	0.00	0.00
11,100.0	90.00	0.00	7,613.0	3,587.2	-482.6	3,605.5	0.00	0.00	0.00
11,200.0	90.00	0.00	7,613.0	3,687.2	-482.5	3,705.4	0.00	0.00	0.00
11,300.0	90.00	0.00	7,613.0	3,787.2	-482.5	3,805.3	0.00	0.00	0.00
11,400.0	90.00	0.00	7,613.0	3,887.2	-482.5	3,905.1	0.00	0.00	0.00
11,500.0	90.00	0.00	7,613.0	3,987.2	-482.5	4,005.0	0.00	0.00	0.00
11,600.0	90.00	0.00	7,613.0	4,087.2	-482.5	4,104.9	0.00	0.00	0.00
11,700.0	90.00	0.00	7,613.0	4,187.2	-482.5	4,204.8	0.00	0.00	0.00
11,800.0	90.00	0.00	7,613.0	4,287.2	-482.5	4,304.7	0.00	0.00	0.00
11,900.0	90.00	0.00	7,613.0	4,387.2	-482.5	4,404.6	0.00	0.00	0.00
12,000.0	90.00	0.00	7,613.0	4,487.2	-482.5	4,504.5	0.00	0.00	0.00
12,100.0	90.00	0.00	7,613.0	4,587.2	-482.5	4,604.4	0.00	0.00	0.00
12,200.0	90.00	0.00	7,613.0	4,687.2	-482.5	4,704.3	0.00	0.00	0.00
12,300.0	90.00	0.00	7,613.0	4,787.2	-482.5	4,804.2	0.00	0.00	0.00
12,400.0	90.00	0.00	7,613.0	4,887.2	-482.5	4,904.1	0.00	0.00	0.00
12,500.0	90.00	0.00	7,613.0	4,987.2	-482.5	5,004.0	0.00	0.00	0.00
12,600.0	90.00	0.00	7,613.0	5,087.2	-482.4	5,103.9	0.00	0.00	0.00
12,700.0	90.00	0.00	7,613.0	5,187.2	-482.4	5,203.8	0.00	0.00	0.00
12,800.0	90.00	0.00	7,613.0	5,287.2	-482.4	5,303.7	0.00	0.00	0.00
12,900.0	90.00	0.00	7,613.0	5,387.2	-482.4	5,403.6	0.00	0.00	0.00
13,000.0	90.00	0.00	7,613.0	5,487.2	-482.4	5,503.5	0.00	0.00	0.00
13,100.0	90.00	0.00	7,613.0	5,587.2	-482.4	5,603.4	0.00	0.00	0.00
13,200.0	90.00	0.00	7,613.0	5,687.2	-482.4	5,703.3	0.00	0.00	0.00
13,300.0	90.00	0.00	7,613.0	5,787.2	-482.4	5,803.2	0.00	0.00	0.00
13,400.0	90.00	0.00	7,613.0	5,887.2	-482.4	5,903.1	0.00	0.00	0.00
13,500.0	90.00	0.00	7,613.0	5,987.2	-482.4	6,003.0	0.00	0.00	0.00
13,600.0	90.00	0.00	7,613.0	6,087.2	-482.4	6,102.9	0.00	0.00	0.00
13,700.0	90.00	0.00	7,613.0	6,187.2	-482.4	6,202.7	0.00	0.00	0.00
13,800.0	90.00	0.00	7,613.0	6,287.2	-482.4	6,302.6	0.00	0.00	0.00
13,900.0	90.00	0.00	7,613.0	6,387.2	-482.4	6,402.5	0.00	0.00	0.00
14,000.0	90.00	0.00	7,613.0	6,487.2	-482.3	6,502.4	0.00	0.00	0.00
14,100.0	90.00	0.00	7,613.0	6,587.2	-482.3	6,602.3	0.00	0.00	0.00
14,200.0	90.00	0.00	7,613.0	6,687.2	-482.3	6,702.2	0.00	0.00	0.00
14,300.0	90.00	0.00	7,613.0	6,787.2	-482.3	6,802.1	0.00	0.00	0.00
14,400.0	90.00	0.00	7,613.0	6,887.2	-482.3	6,902.0	0.00	0.00	0.00
14,500.0	90.00	0.00	7,613.0	6,987.2	-482.3	7,001.9	0.00	0.00	0.00
14,600.0	90.00	0.00	7,613.0	7,087.2	-482.3	7,101.8	0.00	0.00	0.00
14,700.0	90.00	0.00	7,613.0	7,187.2	-482.3	7,201.7	0.00	0.00	0.00
14,800.0	90.00	0.00	7,613.0	7,287.2	-482.3	7,301.6	0.00	0.00	0.00
14,900.0	90.00	0.00	7,613.0	7,387.2	-482.3	7,401.5	0.00	0.00	0.00
15,000.0	90.00	0.00	7,613.0	7,487.2	-482.3	7,501.4	0.00	0.00	0.00
15,100.0	90.00	0.00	7,613.0	7,587.2	-482.3	7,601.3	0.00	0.00	0.00
15,200.0	90.00	0.00	7,613.0	7,687.2	-482.3	7,701.2	0.00	0.00	0.00
15,300.0	90.00	0.00	7,613.0	7,787.2	-482.2	7,801.1	0.00	0.00	0.00

# EOG Resources, Inc.

## Planning Report

<b>Database:</b>	EDM_DENVER	<b>Local Co-ordinate Reference:</b>	Well Critter Creek 546-2109H
<b>Company:</b>	Denver Division- Colorado	<b>TVD Reference:</b>	RKB @ 5281.0usft (KB GL+25')
<b>Project:</b>	DJ - Hereford Ranch	<b>MD Reference:</b>	RKB @ 5281.0usft (KB GL+25')
<b>Site:</b>	Critter Creek C21 NENW	<b>North Reference:</b>	True
<b>Well:</b>	Critter Creek 546-2109H	<b>Survey Calculation Method:</b>	Minimum Curvature
<b>Wellbore:</b>	OH		
<b>Design:</b>	APD Plan (Plat Cert 4/10/15)		

Planned Survey										
Measured Depth (usft)	Inclination (°)	Azimuth (°)	Vertical Depth (usft)	+N/-S (usft)	+E/-W (usft)	Vertical Section (usft)	Dogleg Rate (°/100usft)	Build Rate (°/100usft)	Turn Rate (°/100usft)	
15,400.0	90.00	0.00	7,613.0	7,887.2	-482.2	7,901.0	0.00	0.00	0.00	
15,500.0	90.00	0.00	7,613.0	7,987.2	-482.2	8,000.9	0.00	0.00	0.00	
15,600.0	90.00	0.00	7,613.0	8,087.2	-482.2	8,100.8	0.00	0.00	0.00	
15,700.0	90.00	0.00	7,613.0	8,187.2	-482.2	8,200.7	0.00	0.00	0.00	
15,800.0	90.00	0.00	7,613.0	8,287.2	-482.2	8,300.6	0.00	0.00	0.00	
15,900.0	90.00	0.00	7,613.0	8,387.2	-482.2	8,400.5	0.00	0.00	0.00	
16,000.0	90.00	0.00	7,613.0	8,487.2	-482.2	8,500.3	0.00	0.00	0.00	
16,100.0	90.00	0.00	7,613.0	8,587.2	-482.2	8,600.2	0.00	0.00	0.00	
16,200.0	90.00	0.00	7,613.0	8,687.2	-482.2	8,700.1	0.00	0.00	0.00	
16,300.0	90.00	0.00	7,613.0	8,787.2	-482.2	8,800.0	0.00	0.00	0.00	
16,400.0	90.00	0.00	7,613.0	8,887.2	-482.2	8,899.9	0.00	0.00	0.00	
16,500.0	90.00	0.00	7,613.0	8,987.2	-482.2	8,999.8	0.00	0.00	0.00	
16,600.0	90.00	0.00	7,613.0	9,087.2	-482.2	9,099.7	0.00	0.00	0.00	
16,700.0	90.00	0.00	7,613.0	9,187.2	-482.1	9,199.6	0.00	0.00	0.00	
16,800.0	90.00	0.00	7,613.0	9,287.2	-482.1	9,299.5	0.00	0.00	0.00	
16,900.0	90.00	0.00	7,613.0	9,387.2	-482.1	9,399.4	0.00	0.00	0.00	
17,000.0	90.00	0.00	7,613.0	9,487.2	-482.1	9,499.3	0.00	0.00	0.00	
17,100.0	90.00	0.00	7,613.0	9,587.2	-482.1	9,599.2	0.00	0.00	0.00	
17,200.0	90.00	0.00	7,613.0	9,687.2	-482.1	9,699.1	0.00	0.00	0.00	
17,300.0	90.00	0.00	7,613.0	9,787.2	-482.1	9,799.0	0.00	0.00	0.00	
17,400.0	90.00	0.00	7,613.0	9,887.2	-482.1	9,898.9	0.00	0.00	0.00	
17,500.0	90.00	0.00	7,613.0	9,987.2	-482.1	9,998.8	0.00	0.00	0.00	
17,600.0	90.00	0.00	7,613.0	10,087.2	-482.1	10,098.7	0.00	0.00	0.00	
17,700.0	90.00	0.00	7,613.0	10,187.2	-482.1	10,198.6	0.00	0.00	0.00	
17,800.0	90.00	0.00	7,613.0	10,287.2	-482.1	10,298.5	0.00	0.00	0.00	
17,900.0	90.00	0.00	7,613.0	10,387.2	-482.1	10,398.4	0.00	0.00	0.00	
18,000.0	90.00	0.00	7,613.0	10,487.2	-482.1	10,498.3	0.00	0.00	0.00	
18,073.6	90.00	0.00	7,613.0	10,560.8	-482.0	10,571.8	0.00	0.00	0.00	

Design Targets										
Target Name	Dip Angle (°)	Dip Dir. (°)	TVD (usft)	+N/-S (usft)	+E/-W (usft)	Northing (usft)	Easting (usft)	Latitude	Longitude	
Critter Creek 546-2109H	0.00	0.00	7,613.0	10,560.8	-482.0	587,911.29	2,291,821.08	40° 56' 32.776 N	104° 26' 37.532 W	
- hit/miss target										
- Shape										
- plan hits target center										
- Point										

Casing Points						
Measured Depth (usft)	Vertical Depth (usft)	Name	Casing Diameter (")	Hole Diameter (")		
1,399.0	1,399.0	9 5/8" Surface	9-5/8	13-1/2		
7,885.0	7,613.0	7" Intermediate (Opt 2)	7	8-3/4		
18,073.6	7,613.0	5 1/2" Prod (Opt 1)	5-1/2	8-3/4		
18,073.6	7,613.0	4 1/2" Liner (Opt 2)	4-1/2	6-1/8		