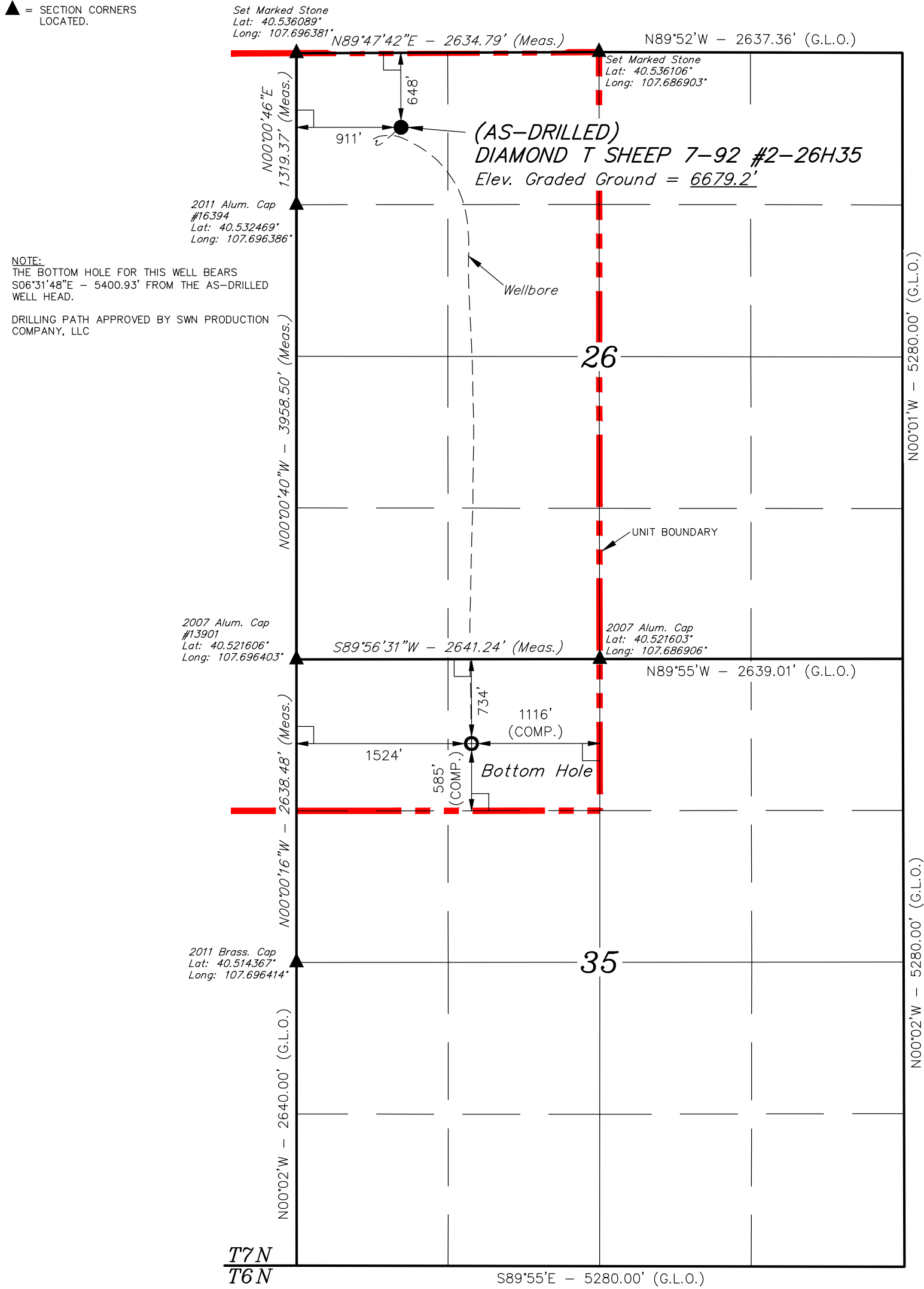


LEGEND:

- └─ = 90° SYMBOL  
● = AS-DRILLED WELLHEAD.  
○ = BOTTOM HOLE.  
▲ = SECTION CORNERS LOCATED.

T7N, R92W, 6th P.M.



NAD 83 (BOTTOM HOLE)	NAD 83 (AS-DRILLED SURFACE LOCATION)
LATITUDE = 40°31'10.52" (40.519589)	LATITUDE = 40°32'03.54" (40.534317)
LONGITUDE = 107°41'27.33" (107.690925)	LONGITUDE = 107°41'35.19" (107.693108)
NAD 27 (BOTTOM HOLE)	NAD 27 (AS-DRILLED SURFACE LOCATION)
LATITUDE = 40°31'10.63" (40.519619)	LATITUDE = 40°32'03.64" (40.534344)
LONGITUDE = 107°41'25.08" (107.690300)	LONGITUDE = 107°41'32.94" (107.692483)
STATE PLANE NAD 83 (COLO. NORTH)	STATE PLANE NAD 83 (COLO. NORTH)
N: 1439651.63 E: 2390942.84	N: 1445029.93 E: 2390468.81
STATE PLANE NAD 27 (COLO. NORTH)	STATE PLANE NAD 27 (COLO. NORTH)
N: 439650.50 E: 1391100.73	N: 445028.77 E: 13990626.69

CERTIFICATE

THIS IS TO CERTIFY THAT THE ABOVE PLAT WAS PREPARED FROM FIELD NOTES OF ACTUAL SURVEYS MADE BY ME OR UNDER MY SUPERVISION AND THAT THE SAME ARE TRUE AND CORRECT TO THE BEST OF MY KNOWLEDGE AND BELIEF.

REGISTERED LAND SURVEYOR  
REGISTRATION NO. 38130  
STATE OF COLORADO

BASIS OF BEARINGS  
BASIS OF BEARINGS IS A G.P.S. OBSERVATION

BASIS OF ELEVATION

SPOT ELEVATION LOCATED AT THE NORTHEAST CORNER OF SECTION 10, T6N, R93W, 6th. P.M., TAKEN FROM THE HORSE GULCH QUADRANGLE, COLORADO, MOFFAT COUNTY, 7.5 MINUTE QUAD. (TOPOGRAPHIC MAP) PUBLISHED BY THE UNITED STATES DEPARTMENT OF THE INTERIOR, GEOLOGICAL SURVEY. SAID ELEVATION IS MARKED AS BEING 6246 FEET.

SWN PRODUCTION COMPANY, LLC

(AS-DRILLED) DIAMOND T SHEEP 7-92 #2-26H35  
NW 1/4 NW 1/4, SECTION 26, T7N, R92W, 6th P.M.  
MOFFAT COUNTY, COLORADO

SURVEYED BY: MARTIN PIERCE, N.W.	DATE: 09-17-15
DRAWN BY: M.O.E.	DATE DRAWN: 09-21-15
SCALE: 1" = 1000'	REVISED: 00-00-00

AS-DRILLED WELL LOCATION PLAT



UELS, LLC  
Corporate Office \* 85 South 200 East  
Vernal, UT 84078 \* (435) 789-1017

