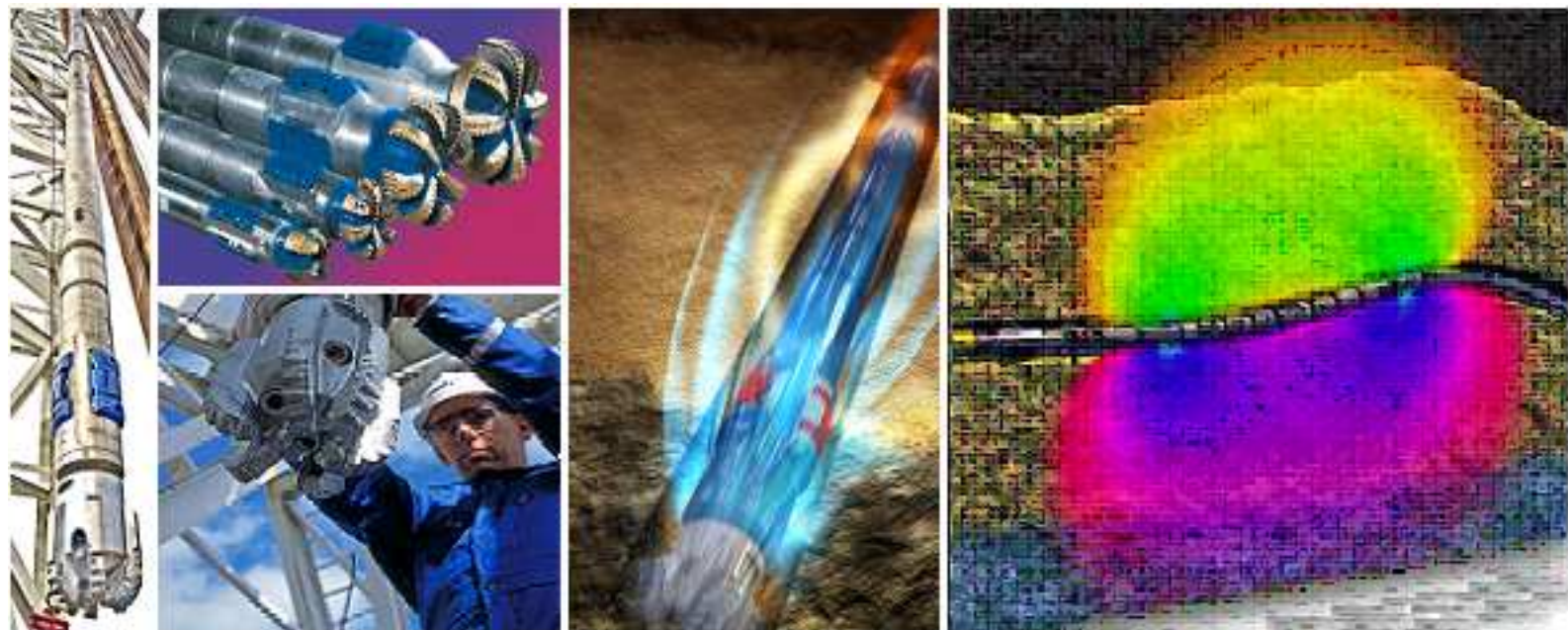


# Schlumberger

**Southwestern Energy  
Diamond T Sheep 7-92 2-26H35  
S26 T07N R92W  
Moffat Co., CO  
PD 706**

## **End of Well Report | Drilling & Measurements**



**Directional Drilling Services  
End of Well Report  
Table of Contents**

	<b>Section</b>
Directional Surveys & Plots	1
Performance Charts	2
Daily Reports	3
BHAs	4
Slide Sheets	5

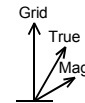
<b>Borehole:</b>	<b>Well:</b>	<b>Field:</b>	<b>Structure:</b>
Original Hole	Diamond T Sheep 7-92 2-26H35	CO, Moffat Co. (NAD 83 NZ)	SWN 26-07N-92W

<b>Gravity &amp; Magnetic Parameters</b>	<b>Surface Location</b>	<b>Miscellaneous</b>
Model: HDGM 2015 Dip: 66.455° Date: 10-Aug-2015	NAD83 Colorado State Plane, Northern Zone, US Feet	Diamond T
MagDec: 9.752° FS: 52274.153nT Gravity FS: 998.881mgn (9.80665 Based)	Lat: N 40 32 3.53 Northing: 1445029.56ftU Grid Conv: -1.417°	Slot: Sheep 7-92 2- TVD Ref: RKB(6701ft above MSL)
	Lon: W 107 41 35.19 Easting: 2390469.01ftU Scale Fact: 0.99996907	Plan: Diamond T Sheep 7-92 2-26H35 MWD 0' to 15008'

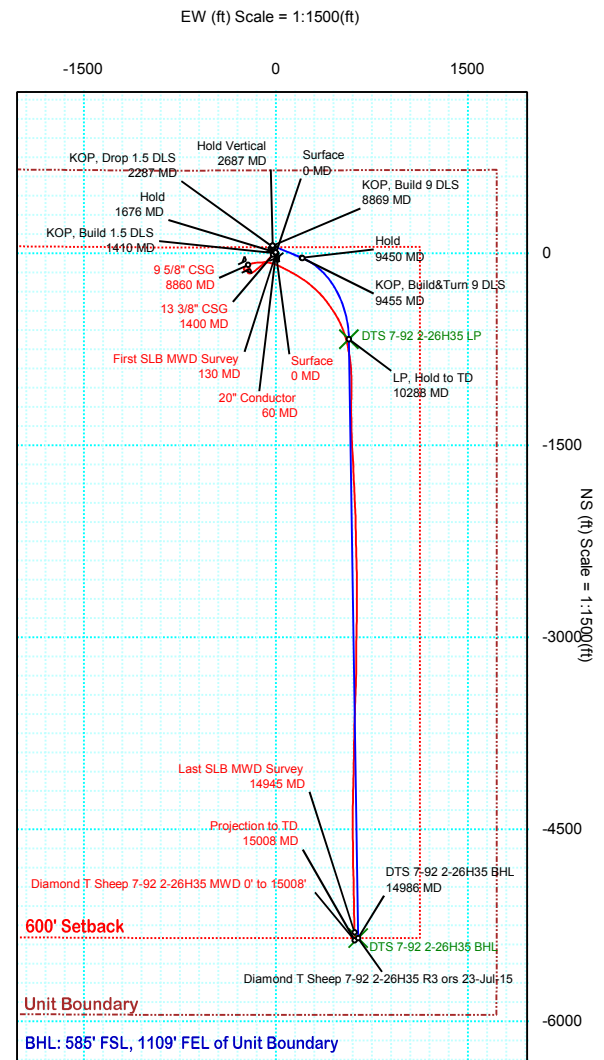
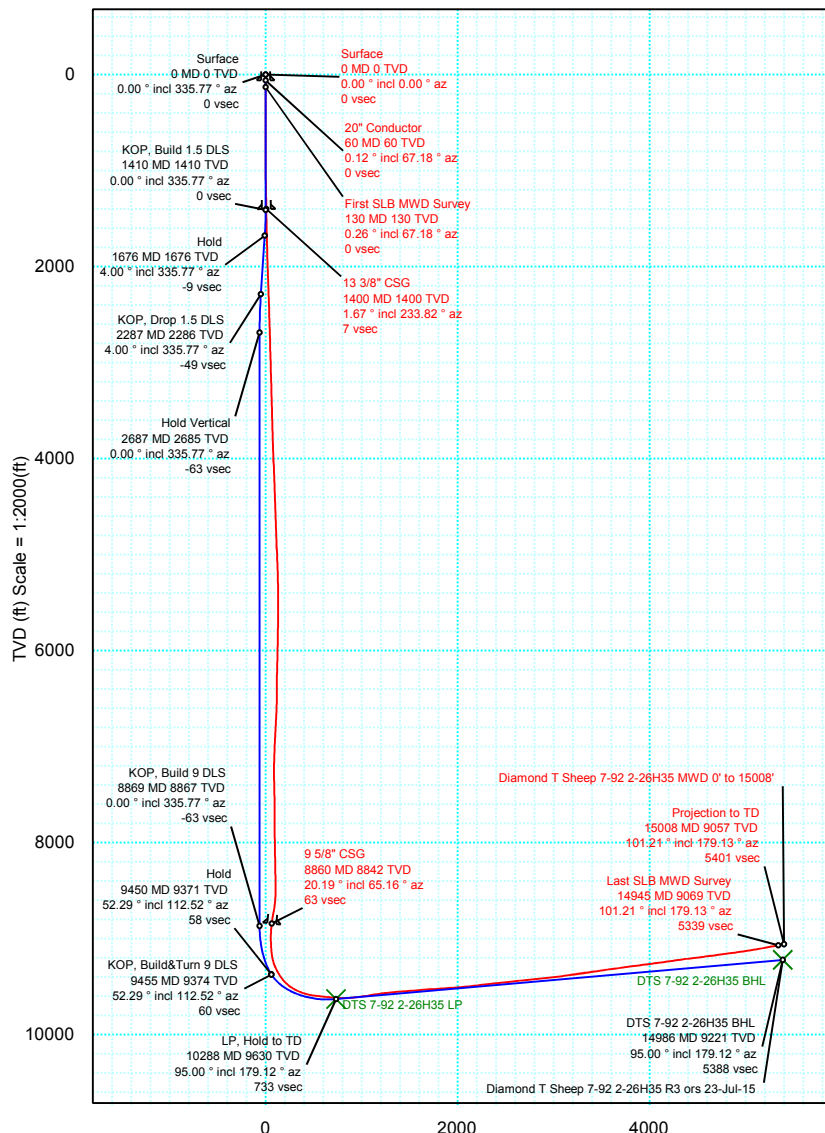
Target Name	Target Description	Shape	Latitude	Longitude	TVD	N(+)/S(-)	E(+)/W(-)	Local Coord
Diamond T Sheep 7-92 2-26H35 Unit Boundary - 600' Inset	Polyline		N 40 32 3.53	W 107 41 35.19	6701.00	0.00	0.00	0.00
Diamond T Sheep 7-92 2-26H35 Unit Boundary	Polyline		N 40 32 3.53	W 107 41 35.19	6701.00	0.00	0.00	0.00
DTS 7-92 2-26H35 BHL	Point		N 40 31 10.85	W 107 41 25.17	9220.57	-5349.56	641.39	569.51
DTS 7-92 2-26H35 LP	Point		N 40 31 57.05	W 107 41 27.60	9630.00	-670.35		

**PvA**

Critical Point	MD	INCL	AZIM	TVD	VSEC	N(+)/S(-)	E(+)/W(-)	DLS
Surface	0.00	0.00	0.00	0.00	0.00	0.00	0.00	
20" Conductor	60.00	0.12	67.18	60.00	-0.02	0.02	0.06	0.20
First SLB MWD Survey	130.00	0.26	67.18	130.00	-0.08	0.11	0.27	0.20
13 3/8" CSG	1400.00	1.67	233.82	1399.67	7.23	-9.96	-22.41	0.26
9 5/8" CSG	8860.00	20.19	65.16	8842.21	63.37	-89.90	-217.45	3.64
Last SLB MWD Survey	14945.00	101.21	179.13	9069.16	5339.38	-5304.09	613.27	1.75
Projection to TD	15008.00	101.21	179.13	9056.91	5400.85	-5365.89	614.21	0.00



Grid North  
Tot Corr (M->G 11.169°)  
Mag Dec (9.752°)  
Grid Conv (-1.417°)



Vertical Section (ft) Azim = 173.183° Scale = 1:2000(ft) Origin = 0N/-S, 0E/-W



## Diamond T Sheep 7-92 2-26H35 MWD 0' to 15008' Survey Geodetic Report

(Def Survey)

**Report Date:** September 08, 2015 - 02:53 PM  
**Client:** Southwestern Energy  
**Field:** CO, Moffat County (NAD 83 NZ) SWN  
**Structure / Slot:** SWN 26-07N-92W (Diamond T Sheep 7-92 2-26H35) / Diamond T  
Sheep 7-92 2-26H35  
**Well:** Diamond T Sheep 7-92 2-26H35  
**Borehole:** Original Hole  
**UWI / API#:** Unknown / Unknown  
**Survey Name:** Diamond T Sheep 7-92 2-26H35 MWD 0' to 15008'  
**Survey Date:** August 03, 2015  
**Tort / AHD / DDI / ERD Ratio:** 249.356 \* / 6179.968 ft / 6.381 / 0.642  
**Coordinate Reference System:** NAD83 Colorado State Plane, Northern Zone, US Feet  
**Location Lat / Long:** N 40° 32' 3.53418", W 107° 41' 35.18898"  
**Location Grid N/E Y/X:** N 1445029.560 ftUS, E 2390469.010 ftUS  
**CRS Grid Convergence Angle:** -1.4170 \*  
**Grid Scale Factor:** 0.99996907  
**Version / Patch:** 2.8.572.0

**Survey / DLS Computation:** Minimum Curvature / Lubinski  
**Vertical Section Azimuth:** 173.163 ° (Grid North)  
**Vertical Section Origin:** 0.000 ft, 0.000 ft  
**TVD Reference Datum:** RKB  
**TVD Reference Elevation:** 6701.000 ft above MSL  
**Seabed / Ground Elevation:** 6679.000 ft above MSL  
**Magnetic Declination:** 9.752 °  
**Total Gravity Field Strength:** 998.8809mgn (9.80665 Based)  
**Gravity Model:** GARM  
**Total Magnetic Field Strength:** 52274.153 nT  
**Magnetic Dip Angle:** 66.455 °  
**Declination Date:** August 10, 2015  
**Magnetic Declination Model:** HDGM 2015  
**North Reference:** Grid North  
**Grid Convergence Used:** -1.4170 °  
**Total Corr Mag North->Grid North:** 11.1687 °  
**Local Coord Referenced To:** Well Head

Comments	MD (ft)	Incl (°)	Azim Grid (°)	TVD (ft)	VSEC (ft)	NS (ft)	EW (ft)	DLS (°/100ft)	Northing (ftUS)	Easting (ftUS)	Latitude (N/S ° ' '')	Longitude (E/W ° ' '')
Surface	0.00	0.00	0.00	0.00	0.00	0.00	0.00	N/A	1445029.56	2390469.01	N 40 32 3.53	W 107 41 35.19
20" Conductor	60.00	0.12	67.18	60.00	-0.02	0.02	0.06	0.20	1445029.58	2390469.07	N 40 32 3.53	W 107 41 35.19
First SLB MWD												
Survey	130.00	0.26	67.18	130.00	-0.08	0.11	0.27	0.20	1445029.67	2390469.28	N 40 32 3.54	W 107 41 35.19
	159.00	0.18	40.18	159.00	-0.13	0.17	0.36	0.44	1445029.73	2390469.37	N 40 32 3.54	W 107 41 35.18
	190.00	0.09	338.85	190.00	-0.19	0.23	0.38	0.51	1445029.79	2390469.39	N 40 32 3.54	W 107 41 35.18
	220.00	0.09	295.64	220.00	-0.22	0.27	0.35	0.22	1445029.83	2390469.36	N 40 32 3.54	W 107 41 35.18
	252.00	0.09	291.76	252.00	-0.25	0.29	0.31	0.02	1445029.85	2390469.32	N 40 32 3.54	W 107 41 35.19
	285.00	0.44	277.89	285.00	-0.29	0.31	0.16	1.07	1445029.87	2390469.17	N 40 32 3.54	W 107 41 35.19
	316.00	0.62	271.01	316.00	-0.35	0.33	-0.13	0.61	1445029.89	2390468.88	N 40 32 3.54	W 107 41 35.19
	346.00	0.70	251.56	346.00	-0.33	0.28	-0.46	0.79	1445029.84	2390468.55	N 40 32 3.54	W 107 41 35.20
	377.00	0.79	260.21	376.99	-0.28	0.18	-0.85	0.46	1445029.74	2390468.16	N 40 32 3.54	W 107 41 35.20
	407.00	0.88	264.76	406.99	-0.28	0.13	-1.29	0.37	1445029.69	2390467.72	N 40 32 3.54	W 107 41 35.21
	438.00	0.97	257.99	437.99	-0.26	0.05	-1.78	0.46	1445029.61	2390467.23	N 40 32 3.53	W 107 41 35.21
	468.00	1.06	262.28	467.98	-0.23	-0.04	-2.30	0.39	1445029.52	2390466.71	N 40 32 3.53	W 107 41 35.22
	529.00	0.97	263.29	528.97	-0.23	-0.18	-3.37	0.15	1445029.38	2390465.64	N 40 32 3.53	W 107 41 35.23
	622.00	1.14	264.39	621.96	-0.25	-0.36	-5.08	0.18	1445029.20	2390463.93	N 40 32 3.53	W 107 41 35.25
	714.00	1.06	264.17	713.94	-0.28	-0.54	-6.83	0.09	1445029.02	2390462.18	N 40 32 3.53	W 107 41 35.28
	806.00	1.06	262.60	805.92	-0.29	-0.73	-8.53	0.03	1445028.83	2390460.48	N 40 32 3.52	W 107 41 35.30
	897.00	1.06	252.05	896.91	-0.12	-1.10	-10.16	0.21	1445028.46	2390458.85	N 40 32 3.52	W 107 41 35.32
	990.00	1.41	239.37	989.89	0.51	-1.95	-11.96	0.48	1445027.61	2390457.05	N 40 32 3.51	W 107 41 35.34
	1080.00	1.85	235.17	1079.85	1.64	-3.34	-14.11	0.51	1445026.22	2390454.90	N 40 32 3.50	W 107 41 35.37
	1172.00	2.02	231.53	1171.80	3.19	-5.20	-16.60	0.23	1445024.36	2390452.41	N 40 32 3.48	W 107 41 35.40
	1264.00	2.11	228.85	1263.74	4.99	-7.32	-19.14	0.14	1445022.24	2390449.87	N 40 32 3.46	W 107 41 35.43
	1356.00	1.58	231.03	1355.69	6.62	-9.23	-21.40	0.58	1445020.33	2390447.61	N 40 32 3.44	W 107 41 35.46
	1365.00	1.58	234.52	1364.69	6.74	-9.38	-21.60	1.07	1445020.18	2390447.41	N 40 32 3.44	W 107 41 35.47
13 3/8" CSG	1400.00	1.67	233.82	1399.67	7.23	-9.96	-22.41	0.26	1445019.60	2390446.61	N 40 32 3.43	W 107 41 35.48
	1472.00	1.85	232.60	1471.64	8.33	-11.29	-24.17	0.26	1445018.27	2390444.84	N 40 32 3.42	W 107 41 35.50
	1568.00	1.76	230.87	1567.59	9.91	-13.16	-26.55	0.11	1445016.40	2390442.46	N 40 32 3.40	W 107 41 35.53
	1663.00	2.11	228.36	1662.54	11.68	-15.24	-28.99	0.38	1445014.32	2390440.02	N 40 32 3.38	W 107 41 35.56
	1758.00	2.37	226.98	1757.46	13.84	-17.74	-31.73	0.28	1445011.82	2390437.28	N 40 32 3.35	W 107 41 35.59
	1853.00	2.55	226.91	1852.38	16.25	-20.53	-34.71	0.19	1445009.03	2390434.30	N 40 32 3.32	W 107 41 35.63
	1949.00	2.81	224.44	1948.27	18.99	-23.67	-37.92	0.30	1445006.89	2390431.09	N 40 32 3.29	W 107 41 35.67
	2044.00	3.08	224.55	2043.14	22.03	-27.15	-41.34	0.28	1445002.41	2390427.67	N 40 32 3.26	W 107 41 35.72
	2140.00	3.25	224.46	2139.00	25.35	-30.93	-45.05	0.18	1444998.63	2390423.96	N 40 32 3.22	W 107 41 35.76
	2236.00	3.25	224.36	2234.84	28.75	-34.82	-48.86	0.01	1444994.74	2390420.15	N 40 32 3.18	W 107 41 35.81
	2331.00	2.90	221.08	2329.71	32.05	-38.55	-52.32	0.41	1444991.01	2390416.69	N 40 32 3.14	W 107 41 35.85
	2426.00	2.81	224.14	2424.59	35.13	-42.04	-55.52	0.19	1444987.52	2390413.49	N 40 32 3.11	W 107 41 35.89
	2522.00	2.81	224.09	2520.47	38.09	-45.42	-58.80	0.00	1444984.15	2390410.21	N 40 32 3.07	W 107 41 35.94
	2617.00	2.64	218.15	2615.37	41.11	-48.81	-61.77	0.35	1444980.75	2390407.24	N 40 32 3.04	W 107 41 35.97
	2711.00	2.29	220.58	2709.28	43.91	-51.94	-64.33	0.39	1444977.62	2390404.68	N 40 32 3.01	W 107 41 36.01
	2807.00	2.29	224.12	2805.20	46.42	-54.77	-66.91	0.15	1444974.79	2390402.10	N 40 32 2.98	W 107 41 36.04
	2902.00	2.64	221.37	2900.11	49.07	-57.78	-69.68	0.39	1444971.79	2390399.33	N 40 32 2.95	W 107 41 36.07
	2997.00	2.81	222.89	2995.01	52.03	-61.12	-72.71	0.19	1444968.44	2390396.30	N 40 32 2.91	W 107 41 36.11
	3093.00	2.90	227.07	3090.89	54.98	-64.50	-76.09	0.24	1444965.06	2390392.92	N 40 32 2.88	W 107 41 36.15
	3188.00	3.08	231.87	3185.76	57.73	-67.71	-79.86	0.32	1444961.85	2390389.15	N 40 32 2.85	W 107 41 36.20
	3284.00	2.99	233.48	3281.62	60.31	-70.80	-83.90	0.13	1444958.77	2390385.11	N 40 32 2.81	W 107 41 36.25
	3380.00	3.17	234.75	3377.49	62.81	-73.82	-88.08	0.20	1444955.74	2390380.93	N 40 32 2.78	W 107 41 36.31
	3475.00	3.34	239.58	3472.33	65.17	-76.74	-92.61	0.34	1444952.83	2390376.40	N 40 32 2.75	W 107 41 36.36
	3571.00	2.99	234.42	3568.19	67.49	-79.61	-97.06	0.47	1444949.95	2390371.95	N 40 32 2.72	W 107 41 36.42
	3666.00	2.99	229.53	3663.06	70.05	-82.66	-100.96	0.27	1444946.90	2390368.05	N 40 32 2.69	W 107 41 36.47
	3762.00	3.25	226.01	3758.91	73.08	-86.17	-104.82	0.34	1444943.39	2390364.19	N 40 32 2.66	W 107 41 36.52
	3857.00	3.52	227.33	3853.75	76.42	-90.02	-108.90	0.30	1444939.54	2390360.11	N 40 32 2.62	W 107 41 36.57
	3953.00	3.61	228.85	3949.56	79.84	-94.01	-113.35	0.14	1444935.56	2390355.67	N 40 32 2.58	W 107 41 36.63
	4048.00	3.78	228.67	4044.37	83.30	-98.04	-117.95	0.18	1444931.52	2390351.06	N 40 32 2.54	W 107 41 36.68
	4143.00	3.96	228.19	4139.15	86.96	-102.30	-122.75	0.19	1444927.27	2390346.27	N 40 32 2.49	W 107 41 36.75
	4238.00	4.04	227.93	4233.92	90.77	-106.73	-127.68	0.09	1444922.84	2390341.34	N 40 32 2.45	W 107 41 36.81
	4334.00	3.78	231.48	4329.69	94.38	-110.96	-132.66	0.37	1444918.60	2390336.35	N 40 32 2.41	W 107 41 36.87
	4429.00	3.96	231.62	4424.48	97.74	-114.95	-137.68	0.19	1444914.61	2390331.33	N 40 32 2.37	W 107 41 36.93
	4525.00	3.69	231.20	4520.26	101.11	-118.94	-142.69	0.28	1444910.62	2390326.33	N 40 32 2.32	W 107 41 37.00
	4620.00	3.69	231.19	4615.07	104.35	-122.78	-147.45	0.00	1444906.79	2390321.56	N 40 32 2.29	W 107 41 37.06
	4715.00	3.87	228.95	4709.86	107.77	-126.80	-152.25	0.25	1444902.77	2390316.76	N 40 32 2.24	W 107 41 37.12
	4811.00	3.87	230.19	4805.64	111.35	-131.00	-157.19	0.09	1444898.57	2390311.83	N 40 32 2.20	W 107 41 37.18
	4906.00	4.13	232.13	4900.41	114.86	-135.15	-162.35	0.31	1444894.41	2390306.67	N 40 32 2.16	W 107 41 37.25
	5001.00	4.40	233.23	4995.15	118.45	-139.43	-167.97	0.30	1444890.13	2390301.05	N 40 32 2.12	W 107 41 37.32
	5096.00	4.66	238.57	5089.85	121.87	-143.63	-174.18	0.52	1444885.94	2390294.84	N 40 32 2.07	W 107 41 37.40
	5192.00	4.92	239.38	5185.51	125.15	-147.76	-181.05	0.28	1444881.81	2390287.97	N 40 32 2.03	W 107 41 37.49
	5288.00	4.31	240.25	5281.20	128.22	-151.64	-187.73	0.64	1444877.92	2390281.29	N 40 32 1.99	W 107 41 37.57
	5379.00	3.87	253.76	5371.97	130.05	-154.20	-193.64	1.16	1444875.37	2390275.37	N 40 32 1.96	W 107 41 37.65
	5473.00	3.96	259.88	5465.75	130.75	-155.66	-199.88	0.45	1444873.91	2390269.13	N 40 32 1.95	W 107 41 37.73
	5568.00	3.17	265.43	5560.57	130.84	-156.44	-205.73	0.91	1444873.12	2390263.29	N 40 32 1.94	W 107 41 37.80
	5664.00	2.46	283.61	5656.46	130.01	-156.17	-210.38	1.18	1444873.40	2390258.64	N 40 32 1.94	W 107 41 37.86
	5759.00	2.11	289.44	5751.38	128.53	-155.11	-214.01	0.44	1444874.46	2390255.01	N 40 32 1.95	W 107 41 37.91
	5855.00	1.76	293.96	5847								

Comments	MD (ft)	Incl (°)	Azim Grid (°)	TVD (ft)	VSEC (ft)	NS (ft)	EW (ft)	DLS (°/100ft)	Northing (ftUS)	Easting (ftUS)	Latitude (N/S ° ' ")	Longitude (E/W ° ' ")
	6330.00	0.35	305.57	6322.19	117.45	-144.68	-220.10	0.89	1444884.88	2390248.92	N 40 32 2.05 W	107 41 37.99
	6425.00	0.62	48.62	6417.19	116.97	-144.17	-219.95	0.82	1444885.39	2390249.07	N 40 32 2.06 W	107 41 37.99
	6520.00	1.58	38.72	6512.17	115.76	-142.81	-218.74	1.03	1444886.75	2390250.27	N 40 32 2.07 W	107 41 37.98
	6616.00	2.37	30.20	6608.12	113.25	-140.06	-216.92	0.88	1444889.50	2390252.10	N 40 32 2.10 W	107 41 37.95
	6711.00	3.08	22.33	6703.01	109.45	-136.01	-214.96	0.84	1444893.56	2390254.06	N 40 32 2.14 W	107 41 37.93
	6807.00	3.52	18.55	6798.85	104.53	-130.83	-213.04	0.51	1444898.74	2390255.97	N 40 32 2.19 W	107 41 37.91
	6902.00	3.61	24.84	6893.67	99.35	-125.35	-210.86	0.42	1444904.22	2390258.16	N 40 32 2.24 W	107 41 37.88
	6998.00	3.25	27.10	6889.49	94.52	-120.18	-208.35	0.40	1444909.38	2390260.67	N 40 32 2.30 W	107 41 37.85
	7093.00	2.55	24.60	7084.37	90.49	-115.86	-206.24	0.75	1444913.70	2390262.77	N 40 32 2.34 W	107 41 37.82
	7189.00	0.97	338.62	7180.33	87.88	-113.16	-205.65	2.08	1444916.40	2390263.37	N 40 32 2.37 W	107 41 37.82
	7284.00	2.02	249.81	7275.30	87.49	-112.99	-207.51	2.34	1444916.57	2390261.50	N 40 32 2.37 W	107 41 37.84
	7379.00	2.37	239.27	7370.23	88.67	-114.58	-210.77	0.56	1444914.99	2390258.24	N 40 32 2.35 W	107 41 37.88
	7475.00	2.02	226.51	7466.16	90.48	-116.75	-213.71	0.62	1444912.81	2390255.31	N 40 32 2.33 W	107 41 37.92
	7566.00	1.41	216.97	7557.12	92.25	-118.75	-215.55	0.74	1444910.81	2390253.47	N 40 32 2.31 W	107 41 37.94
	7661.00	0.35	24.85	7652.11	92.84	-119.42	-216.13	1.85	1444910.14	2390252.89	N 40 32 2.30 W	107 41 37.95
	7756.00	0.26	242.93	7747.11	92.67	-119.26	-216.20	0.61	1444910.31	2390252.82	N 40 32 2.30 W	107 41 37.95
	7851.00	1.41	234.38	7842.10	93.31	-120.04	-217.34	1.21	1444909.53	2390251.68	N 40 32 2.30 W	107 41 37.96
	7944.00	2.11	237.12	7935.06	94.61	-121.63	-219.71	0.76	1444907.93	2390249.31	N 40 32 2.28 W	107 41 37.99
	8039.00	2.20	238.13	8029.99	96.15	-123.54	-222.72	0.10	1444906.02	2390246.29	N 40 32 2.26 W	107 41 38.03
	8135.00	2.11	233.16	8125.92	97.82	-125.58	-225.70	0.22	1444903.99	2390243.31	N 40 32 2.24 W	107 41 38.07
	8230.00	2.29	234.55	8220.85	99.60	-127.73	-228.65	0.20	1444901.84	2390240.37	N 40 32 2.22 W	107 41 38.11
	8326.00	2.37	236.07	8316.77	101.42	-129.95	-231.86	0.11	1444899.62	2390237.16	N 40 32 2.19 W	107 41 38.15
	8425.00	2.90	240.85	8415.67	103.30	-132.31	-235.74	0.58	1444897.26	2390233.27	N 40 32 2.17 W	107 41 38.20
	8489.00	3.08	254.54	8479.58	104.18	-133.56	-238.81	1.15	1444896.01	2390230.20	N 40 32 2.16 W	107 41 38.24
	8584.00	6.80	302.71	8574.26	101.08	-131.28	-245.87	5.36	1444898.28	2390223.15	N 40 32 2.18 W	107 41 38.33
	8616.00	6.42	312.15	8606.05	98.56	-129.09	-248.75	3.39	1444900.47	2390220.27	N 40 32 2.20 W	107 41 38.37
	8648.00	6.24	334.00	8637.86	95.57	-126.33	-250.84	7.50	1444903.24	2390218.18	N 40 32 2.22 W	107 41 38.40
	8679.00	7.91	358.39	8668.63	91.85	-122.68	-251.63	10.97	1444906.89	2390217.38	N 40 32 2.26 W	107 41 38.41
	8711.00	11.08	18.11	8700.20	86.87	-117.55	-250.74	14.06	1444912.01	2390218.28	N 40 32 2.31 W	107 41 38.40
	8743.00	14.42	33.07	8731.41	81.02	-111.29	-247.61	14.60	1444918.28	2390221.41	N 40 32 2.37 W	107 41 38.36
	8775.00	17.85	47.67	8762.16	75.11	-104.64	-241.80	16.53	1444924.92	2390227.21	N 40 32 2.44 W	107 41 38.29
	8807.00	19.87	58.16	8792.45	69.96	-98.47	-233.56	12.31	1444931.10	2390235.46	N 40 32 2.50 W	107 41 38.18
	8839.00	20.31	62.98	8822.51	65.75	-93.07	-223.99	5.35	1444936.49	2390245.03	N 40 32 2.56 W	107 41 38.06
	8860.00	20.19	65.16	8842.21	63.37	-89.90	-217.45	3.64	1444939.67	2390251.57	N 40 32 2.59 W	107 41 37.98
	8870.00	20.14	66.21	8851.60	62.34	-88.48	-214.31	3.64	1444941.09	2390254.71	N 40 32 2.61 W	107 41 37.94
	8901.00	20.22	68.41	8880.69	59.42	-84.35	-204.45	2.46	1444945.21	2390264.57	N 40 32 2.65 W	107 41 37.81
	8933.00	21.46	74.37	8910.60	57.11	-80.74	-193.67	7.67	1444948.82	2390275.35	N 40 32 2.69 W	107 41 37.67
	8965.00	23.92	77.10	8940.12	55.53	-77.72	-181.70	8.36	1444951.85	2390287.31	N 40 32 2.72 W	107 41 37.52
	8997.00	27.08	80.31	8969.01	54.48	-75.04	-168.19	10.77	1444954.52	2390300.82	N 40 32 2.75 W	107 41 37.34
	9029.00	28.14	84.08	8997.36	54.24	-73.04	-153.51	6.38	1444956.53	2390315.51	N 40 32 2.78 W	107 41 37.15
	9061.00	28.14	86.63	9025.58	54.82	-71.81	-138.47	3.76	1444957.75	2390330.55	N 40 32 2.79 W	107 41 36.96
	9093.00	27.96	88.21	9053.82	55.94	-71.14	-123.44	2.39	1444958.43	2390345.58	N 40 32 2.80 W	107 41 36.76
	9124.00	27.70	88.17	9081.24	57.20	-70.68	-108.97	0.84	1444958.88	2390360.04	N 40 32 2.81 W	107 41 36.58
	9156.00	27.70	89.01	9109.57	58.61	-70.31	-94.10	1.22	1444959.25	2390374.91	N 40 32 2.82 W	107 41 36.38
	9188.00	29.11	93.43	9137.72	60.76	-70.65	-78.89	7.91	1444958.91	2390390.12	N 40 32 2.82 W	107 41 36.19
	9220.00	30.16	97.06	9165.54	64.07	-72.10	-63.14	6.50	1444957.46	2390405.87	N 40 32 2.81 W	107 41 35.98
	9252.00	31.22	101.89	9193.06	68.67	-74.80	-47.05	8.38	1444954.76	2390421.96	N 40 32 2.78 W	107 41 35.77
	9284.00	33.33	105.38	9220.11	74.66	-78.84	-30.45	8.80	1444950.72	2390438.56	N 40 32 2.75 W	107 41 35.56
	9315.00	35.53	108.23	9245.68	81.69	-83.92	-13.68	8.80	1444945.64	2390455.33	N 40 32 2.70 W	107 41 35.34
	9347.00	37.90	111.73	9271.34	90.34	-90.47	4.28	9.88	1444939.09	2390473.29	N 40 32 2.64 W	107 41 35.10
	9379.00	40.19	114.81	9296.19	100.46	-98.44	22.79	9.38	1444931.12	2390491.80	N 40 32 2.57 W	107 41 34.86
	9411.00	42.03	116.03	9320.30	111.69	-107.48	41.79	6.27	1444922.09	2390510.80	N 40 32 2.48 W	107 41 34.61
	9443.00	44.41	117.12	9343.62	123.76	-117.28	61.38	7.79	1444912.28	2390530.39	N 40 32 2.39 W	107 41 34.36
	9474.00	47.22	117.83	9365.22	136.29	-127.54	81.10	9.21	1444902.02	2390550.11	N 40 32 2.29 W	107 41 34.10
	9506.00	48.89	118.67	9386.61	149.97	-138.81	102.07	5.57	1444890.76	2390571.07	N 40 32 2.19 W	107 41 33.82
	9538.00	50.39	118.87	9407.33	164.17	-150.54	123.44	4.71	1444879.02	2390592.45	N 40 32 2.08 W	107 41 33.54
	9570.00	53.20	118.99	9427.12	178.86	-162.71	145.45	8.79	1444866.86	2390614.15	N 40 32 1.96 W	107 41 33.25
	9602.00	56.89	121.04	9445.45	194.60	-175.83	168.14	12.67	1444853.73	2390637.15	N 40 32 1.84 W	107 41 32.96
	9633.00	59.09	122.21	9461.89	210.95	-189.62	190.52	7.78	1444839.95	2390659.53	N 40 32 1.71 W	107 41 32.66
	9665.00	60.41	123.64	9478.01	228.63	-204.64	213.72	5.65	1444824.92	2390682.73	N 40 32 1.56 W	107 41 32.36
	9697.00	62.26	127.41	9493.36	247.55	-220.96	236.56	11.84	1444808.61	2390705.57	N 40 32 1.41 W	107 41 32.06
	9728.00	64.54	128.89	9507.24	267.15	-238.08	258.36	8.50	1444791.48	2390727.36	N 40 32 1.25 W	107 41 31.77
	9759.00	66.48	130.16	9520.09	287.56	-256.04	280.11	7.28	1444773.53	2390749.12	N 40 32 1.07 W	107 41 31.48
	9791.00	69.12	132.90	9532.18	309.71	-275.68	302.29	11.44	1444753.89	2390771.29	N 40 32 0.88 W	107 41 31.19
	9823.00	70.35	134.28	9543.27	332.85	-296.38	324.03	5.58	1444733.19	2390793.03	N 40 32 0.69 W	107 41 30.90
	9855.00	71.40	135.66	9553.75	356.61	-317.75	345.41	5.23	1444711.82	2390814.41	N 40 32 0.48 W	107 41 30.62
	9887.00	72.90	139.36	9563.56	381.35	-340.21	365.98	11.96	1444689.37	2390834.98	N 40 32 0.26 W	107 41 30.34
	9919.00	74.92	141.89	9572.43	407.27	-363.97	385.48	9.88	1444665.60	2390854.48	N 40 32 0.03 W	107 41 30.08
	9950.00	77.65	144.06	9579.78	433.30	-388.01	403.61	11.13	1444641.56	2390872.61	N 40 31 59.80 W	107 41 29.84
	9982.00	80.11	145.09	9585.95	460.87	-413.60	421.81	8.31	1444615.97	2390890.80	N 40 31 59.55 W	107 41 29.60
	10013.00	82.39	145.62	9590.67	487.97	-438.80	439.22	7.55	1444590.77	2390908.22	N 40 31 59.31 W	107 41 29.36
	10045.00	83.54	147.24	9594.59	516.33	-465.26	456.78	6.18	1444564.31	2390925.78	N 40 31 59.05 W	107 41 29.13
	10077.00	84.06	149.33	9598.05	545.19	-492.33	473.51	6.69	1444537.25	2390942.50	N 40 31 58.79 W	107 41 28.90
	10109.00	84.42	152.39	9601.26	574.65	-520.13	489.01	9.58	1444509.45	2390958.00	N 40 31 58.52 W	107 41 28.69
	10140.00	84.59	155.69	9604.23	603.80	-547.87	502.51	10.61	1444481.71	2390971.51	N 40 31 58.24 W	107 41 28.51
	10172.00	84.86	157.99	9607.17	634.38	-577.17	515.04	7.21	1444452.41	2390984.04	N 40 31 57.96 W	107 41 28.34
	10204.00	85.30	160.11	9609.91	665.29	-606.94	526.44	6.74	1444422.64	2390995.44	N 40 31 57.67 W	107

Comments	MD (ft)	Incl (°)	Azim Grid (°)	TVD (ft)	VSEC (ft)	NS (ft)	EW (ft)	DLS (°/100ft)	Northing (ftUS)	Easting (ftUS)	Latitude (N/S ° ' ")	Longitude (E/W ° ' ")
	12617.00	96.90	180.86	9394.86	3053.27	-2999.81	628.29	0.76	1442029.85	2391097.28	N 40 31 34.05	W 107 41 26.09
	12712.00	97.61	180.95	9382.86	3146.65	-3094.04	626.80	0.75	1441935.62	2391095.79	N 40 31 33.12	W 107 41 26.08
	12808.00	98.31	179.58	9369.57	3241.00	-3189.11	626.36	1.59	1441840.55	2391095.35	N 40 31 32.18	W 107 41 26.06
	12904.00	98.31	181.42	9355.69	3335.21	-3284.09	625.53	1.90	1441745.57	2391094.52	N 40 31 31.25	W 107 41 26.04
	12999.00	98.40	181.37	9341.89	3428.23	-3378.06	623.25	0.11	1441651.61	2391092.24	N 40 31 30.32	W 107 41 26.04
	13094.00	98.05	182.45	9328.30	3521.16	-3472.03	620.11	1.18	1441557.65	2391089.10	N 40 31 29.39	W 107 41 26.05
	13189.00	97.43	181.79	9315.50	3614.14	-3566.10	616.63	0.95	1441463.58	2391085.62	N 40 31 28.46	W 107 41 26.06
	13284.00	97.96	182.00	9302.78	3707.20	-3660.19	613.52	0.60	1441369.49	2391082.51	N 40 31 27.53	W 107 41 26.07
	13380.00	96.99	180.96	9290.29	3801.38	-3755.34	611.06	1.47	1441274.34	2391080.05	N 40 31 26.59	W 107 41 26.08
	13475.00	97.96	180.50	9277.93	3894.75	-3849.52	609.86	1.13	1441180.16	2391078.85	N 40 31 25.66	W 107 41 26.06
	13571.00	97.69	181.14	9264.86	3989.01	-3944.62	608.50	0.72	1441085.07	2391077.49	N 40 31 24.72	W 107 41 26.05
	13666.00	97.34	181.18	9252.44	4082.27	-4038.78	606.59	0.37	1440990.91	2391075.58	N 40 31 23.79	W 107 41 26.04
	13761.00	97.96	181.85	9239.79	4175.43	-4132.90	604.10	0.96	1440896.79	2391073.09	N 40 31 22.86	W 107 41 26.05
	13856.00	97.96	181.14	9226.63	4268.52	-4226.96	601.65	0.74	1440802.74	2391070.64	N 40 31 21.93	W 107 41 26.05
	13951.00	97.78	180.71	9213.63	4361.76	-4321.05	600.13	0.49	1440708.65	2391069.12	N 40 31 21.00	W 107 41 26.04
	14046.00	96.46	180.11	9201.85	4455.27	-4415.31	599.45	1.52	1440614.39	2391068.44	N 40 31 20.06	W 107 41 26.02
	14141.00	96.99	179.53	9190.73	4548.98	-4509.66	599.75	0.82	1440520.05	2391068.74	N 40 31 19.13	W 107 41 25.98
	14236.00	97.43	179.34	9178.80	4642.67	-4603.90	600.68	0.50	1440425.81	2391069.67	N 40 31 18.20	W 107 41 25.94
	14331.00	98.40	179.99	9165.72	4736.16	-4697.99	601.23	1.23	1440331.72	2391070.22	N 40 31 17.27	W 107 41 25.90
	14427.00	97.34	177.95	9152.58	4830.76	-4793.07	602.94	2.38	1440236.65	2391071.93	N 40 31 16.33	W 107 41 25.85
	14522.00	97.96	178.66	9139.93	4924.53	-4887.18	605.73	0.99	1440142.54	2391074.72	N 40 31 15.40	W 107 41 25.78
	14616.00	99.01	179.18	9126.06	5017.03	-4980.13	607.48	1.24	1440049.59	2391076.47	N 40 31 14.49	W 107 41 25.73
	14710.00	99.36	179.08	9111.06	5109.33	-5072.91	608.89	0.39	1439956.81	2391077.88	N 40 31 13.57	W 107 41 25.68
	14805.00	100.07	179.15	9095.02	5202.46	-5166.54	610.34	0.75	1439863.19	2391079.33	N 40 31 12.65	W 107 41 25.63
	14900.00	100.86	178.41	9077.77	5295.43	-5259.94	612.32	1.13	1439769.80	2391081.31	N 40 31 11.72	W 107 41 25.58
Last SLB MWD Survey	14945.00	101.21	179.13	9069.16	5339.38	-5304.09	613.27	1.75	1439725.64	2391082.26	N 40 31 11.29	W 107 41 25.55
Projection to TD	15008.00	101.21	179.13	9056.91	5400.85	-5365.89	614.21	0.00	1439663.85	2391083.20	N 40 31 10.68	W 107 41 25.52

Survey Type: Def Survey

Survey Error Model: ISCWSA Rev 0 \*\*\* 3-D 95.000% Confidence 2.7955 sigma  
Survey Program:

Description	Part	MD From (ft)	MD To (ft)	EOU Freq (ft)	Hole Size	Casing Diameter (in)	Survey Tool Type	Borehole / Survey
	1	0.000	22.000	1/98.425	17.500	13.375	SLB_MWD-INC_ONLY-Depth Only	Original Hole / Diamond T Sheep 7-92 2-26H35 MWD 0' to 15008'
	1	22.000	22.000	Act Stns	17.500	13.375	SLB_MWD-INC_ONLY-Depth Only	Original Hole / Diamond T Sheep 7-92 2-26H35 MWD 0' to 15008'
	1	22.000	190.000	Act Stns	17.500	13.375	SLB_MWD-INC_ONLY	Original Hole / Diamond T Sheep 7-92 2-26H35 MWD 0' to 15008'
	1	190.000	220.000	Act Stns	17.500	13.375	SLB_MWD-STD	Original Hole / Diamond T Sheep 7-92 2-26H35 MWD 0' to 15008'
	1	220.000	252.000	Act Stns	17.500	13.375	SLB_MWD-INC_ONLY	Original Hole / Diamond T Sheep 7-92 2-26H35 MWD 0' to 15008'
	1	252.000	1400.000	Act Stns	17.500	13.375	SLB_MWD-STD	Original Hole / Diamond T Sheep 7-92 2-26H35 MWD 0' to 15008'
	1	1400.000	8860.000	Act Stns	12.250	9.625	SLB_MWD-STD	Original Hole / Diamond T Sheep 7-92 2-26H35 MWD 0' to 15008'
	1	8860.000	14945.000	Act Stns	8.750	5.500	SLB_MWD-STD	Original Hole / Diamond T Sheep 7-92 2-26H35 MWD 0' to 15008'
	1	14945.000	15008.000	Act Stns	8.750	5.500	SLB_BLIND+TREND	Original Hole / Diamond T Sheep 7-92 2-26H35 MWD 0' to 15008'