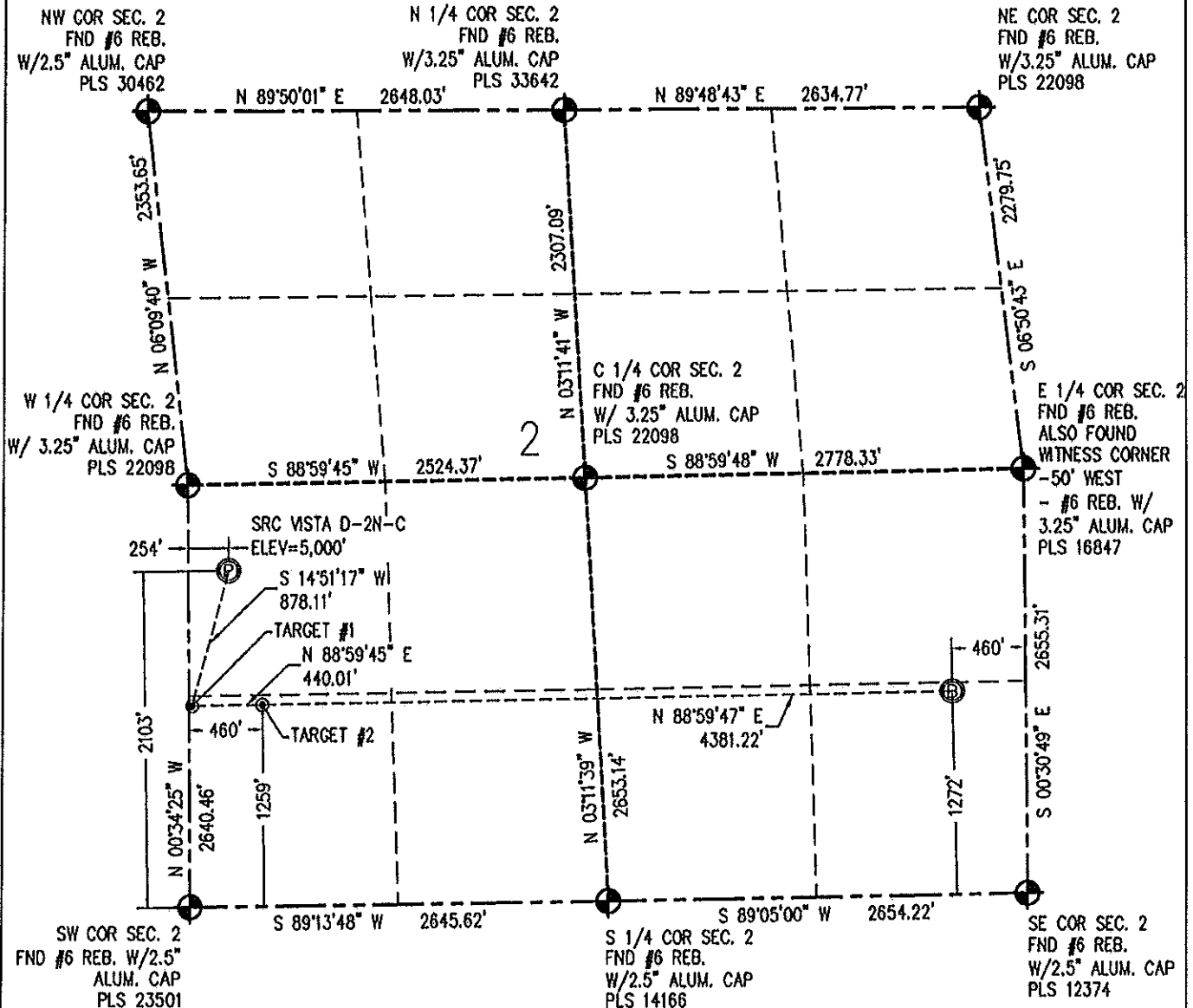


WELL LOCATION CERTIFICATE

THIS MAP DOES NOT REPRESENT A BOUNDARY SURVEY

SECTION 2
TOWNSHIP 4 NORTH
RANGE 68 WEST

N IN ACCORDANCE WITH A REQUEST FROM ORAN RASMUSON - SYNERGY RESOURCES, BASELINE ENGINEERING CORP. HAS DETERMINED THE LOCATION OF THE SRC VISTA D-2N-C TO BE 2103' FSL AND 254' FWL, AS MEASURED AT NINETY (90) DEGREES FROM THE SECTION LINE OF SECTION 2, TOWNSHIP 4 NORTH, RANGE 68 WEST AND THE BOTTOM HOLE LOCATION TO BE 1272' FSL AND 460' FEL OF SECTION 2, TOWNSHIP 4 NORTH, RANGE 68 WEST, 6TH PRINCIPAL MERIDIAN, WELD COUNTY, COLORADO.

I HEREBY CERTIFY THAT THIS WELL LOCATION CERTIFICATE WAS PREPARED BY ME, OR UNDER MY DIRECT SUPERVISION, THAT THE FIELD WORK WAS COMPLETED ON 07/28/2014, THAT IT IS NOT A LAND SURVEY PLAT OR AN IMPROVEMENT SURVEY PLAT, AND THAT IT IS NOT TO BE RELIED UPON FOR ESTABLISHMENT OF FENCE, BUILDING, OR OTHER FUTURE IMPROVEMENT LINES.

NOTES:

- 1) NEAREST CULTURAL ITEMS:
BUILDING: 1024' SW
BUILDING UNIT: 1024' SW
HIGH OCCUPANCY BUILDING UNIT: 5280'+
DESIGNATED OUTSIDE ACTIVITY AREA: 5280'+
PUBLIC ROAD: INTERSTATE 25 235' W
ABOVE GROUND UTILITY: 205' W
RAILROAD: 5280'+
PROPERTY LINE: 204' W
- 2) SURFACE USE: REMEDIATED GROUND.
- 3) OPERATOR NAME: BRETT BRCH.
- 4) THE NEAREST EXISTING WELL IS: PRATT 14-20 1114' SE.
- 5) Bearings shown are grid bearings of the Colorado State Plane Coordinate System, North Zone, North American Datum 1983/2007. The lined dimensions as contained herein are based upon the "U.S. Survey Foot."
- 6) Ground elevations are based on an unobserved GPS elevation (NAD83 DATUM).
- 7) IMPROVEMENTS: See LOCATION DRAWING for all visible improvements within 500' of disturbed area.

SURFACE HOLE:
LATITUDE: 40.341283° N
LONGITUDE: 104.978905° W
POOP: 0.6
1/4, 1/4: NW1/4SW1/4

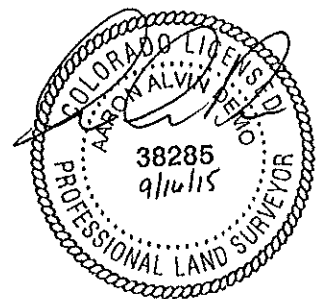
BOTTOM HOLE:
LATITUDE: 40.339110° N
LONGITUDE: 104.962441° W

TARGET #1:
LATITUDE: 40.338957° N
LONGITUDE: 104.979730° W

TARGET #2:
LATITUDE: 40.338971° N
LONGITUDE: 104.978152° W

LEGEND

- - FOUND/SET SURVEY MONUMENT PER MONUMENT RECORD EXCEPTIONS NOTED.
- - CALCULATED SURVEY MONUMENT POSITION
- (C) - CALCULATED DIMENSION



AARON A. DEMO
Professional Land Surveyor Registration No. 38285
State of Colorado
FOR AND ON BEHALF OF BASELINE ENGINEERING CORP.

Completed
9/16/2015

PROJECT #SYN04W02-01