

# Synergy Resources

Well Name: **SRC Vista 44-2N-C**

Surface Location: SRC Vista Pad Sec.2-T4N-R68W

North American Datum 1983 , US State Plane 1983, Colorado Northern Zone

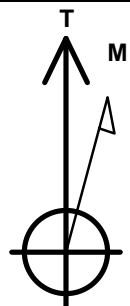
Ground Elevation: 5000.0

+N/-S +E/-W Northing Easting Latitude Longitude Slot  
0.0 0.0 1367536.79 3145255.85 40.341118 -104.978904

Ensign 131 RKB - 13.5' WELL @ 5013.5ft (Ensign 131 RKB - 13.5')

## DESIGN TARGET DETAILS

Name	TVD	+N/-S	+E/-W	Shape
SHL 2043'FSL & 254'FWL	1.0	0.0	0.0	Point
BHL 495'FSL & 460'FEL	6900.0	-1507.4	4592.1	Point



Azimuths to True North  
Magnetic North: 8.40°

Magnetic Field  
Strength: 52627.2snT  
Dip Angle: 66.82°  
Date: 9/21/2015  
Model: IGRF2010

**SRC Vista Pad Sec.2-T4N-R68W**

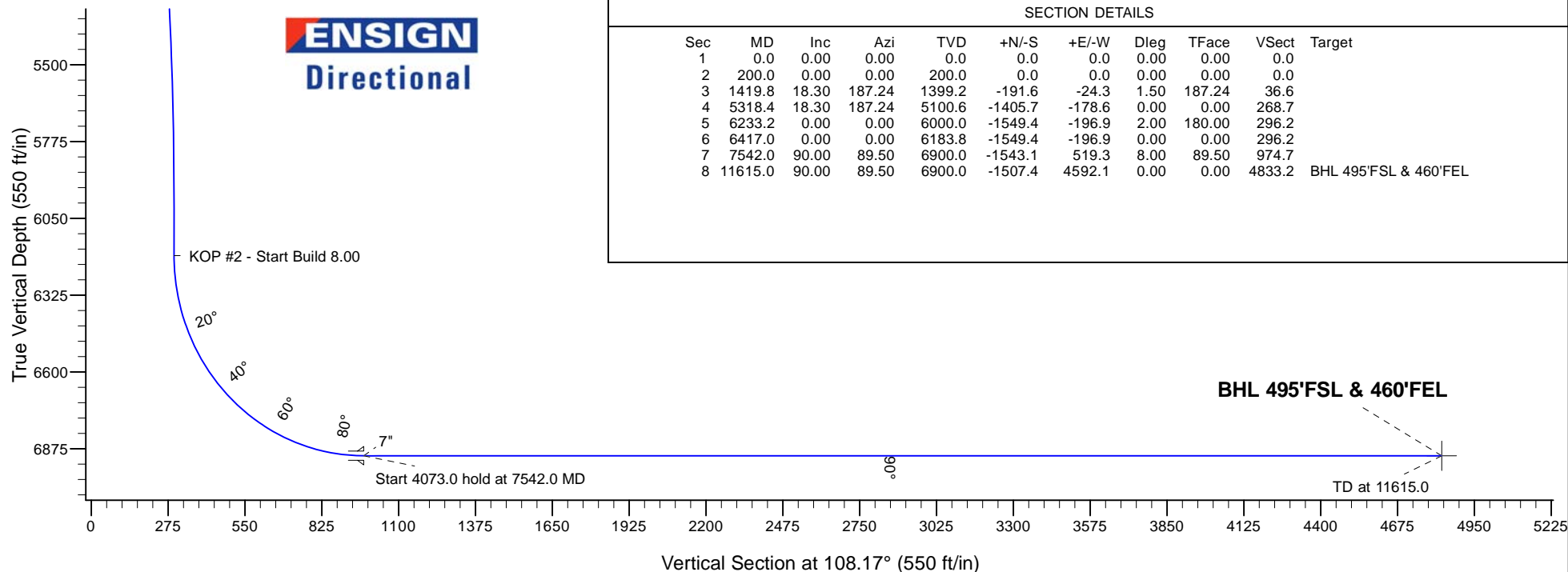
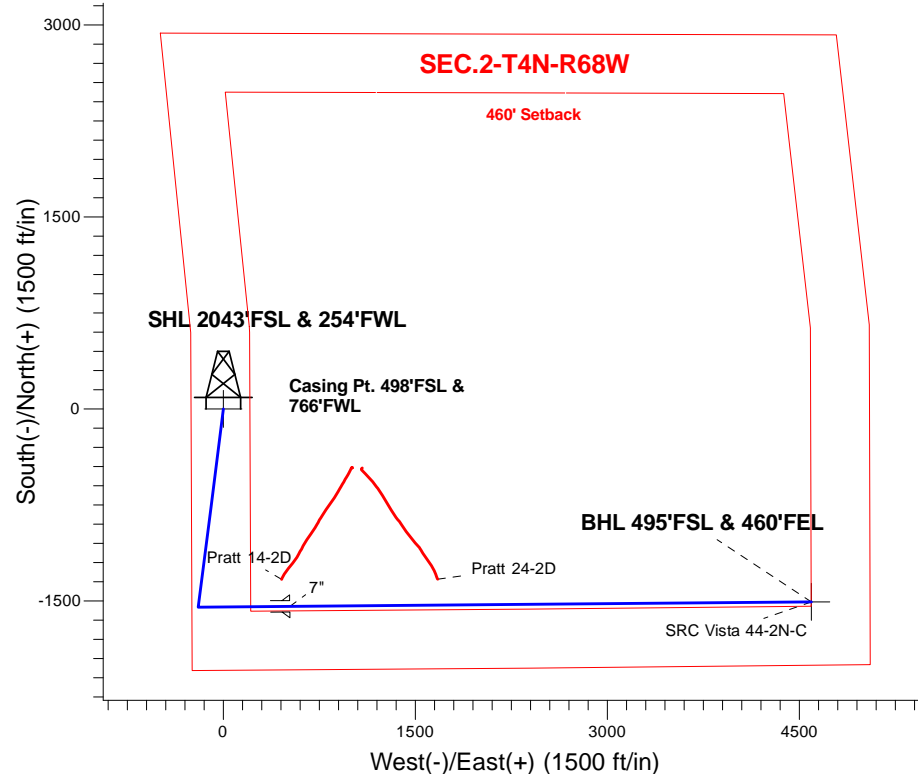
**SRC Vista 44-2N-C**

**Plan #2 (9-21-15)**

**18:22, September 21 2015**

## ANNOTATIONS

TVD	MD	Annotation
200.0	200.0	KOP - Start Build 1.50
5100.7	5318.4	Start Drop -2.00
6183.8	6417.0	KOP #2 - Start Build 8.00
6900.0	7542.0	Start 4073.0 hold at 7542.0 MD
6900.0	11615.0	TD at 11615.0



## SECTION DETAILS

Sec	MD	Inc	Azi	TVD	+N/-S	+E/-W	Dleg	TFace	VSect	Target
1	0.0	0.00	0.00	0.0	0.0	0.0	0.00	0.00	0.0	
2	200.0	0.00	0.00	200.0	0.0	0.0	0.00	0.00	0.0	
3	1419.8	18.30	187.24	1399.2	-191.6	-24.3	1.50	187.24	36.6	
4	5318.4	18.30	187.24	5100.6	-1405.7	-178.6	0.00	0.00	268.7	
5	6233.2	0.00	0.00	6000.0	-1549.4	-196.9	2.00	180.00	296.2	
6	6417.0	0.00	0.00	6183.8	-1549.4	-196.9	0.00	0.00	296.2	
7	7542.0	90.00	89.50	6900.0	-1543.1	519.3	8.00	89.50	974.7	
8	11615.0	90.00	89.50	6900.0	-1507.4	4592.1	0.00	0.00	4833.2	BHL 495'FSL & 460'FEL



# Directional

## Synergy Resources

SEC.2-T4N-R68W

SRC Vista Pad Sec.2-T4N-R68W

SRC Vista 44-2N-C

Wellbore #1

Plan: Plan #2 (9-21-15)

## Standard Planning Report

21 September, 2015



<b>Database:</b>	US_EDM	<b>Local Co-ordinate Reference:</b>	Well SRC Vista 44-2N-C
<b>Company:</b>	Synergy Resources	<b>TVD Reference:</b>	WELL @ 5013.5ft (Ensign 131 RKB - 13.5')
<b>Project:</b>	SEC.2-T4N-R68W	<b>MD Reference:</b>	WELL @ 5013.5ft (Ensign 131 RKB - 13.5')
<b>Site:</b>	SRC Vista Pad Sec.2-T4N-R68W	<b>North Reference:</b>	True
<b>Well:</b>	SRC Vista 44-2N-C	<b>Survey Calculation Method:</b>	Minimum Curvature
<b>Wellbore:</b>	Wellbore #1		
<b>Design:</b>	Plan #2 (9-21-15)		

<b>Project</b>	SEC.2-T4N-R68W, Weld County, Colorad		
<b>Map System:</b>	US State Plane 1983	<b>System Datum:</b>	Mean Sea Level
<b>Geo Datum:</b>	North American Datum 1983		Using Well Reference Point
<b>Map Zone:</b>	Colorado Northern Zone		Using geodetic scale factor

Site		SRC Vista Pad Sec.2-T4N-R68W			
Site Position:		Northing:	1,367,536.80 usft	Latitude:	40.341118
From:	Lat/Long	Easting:	3,145,255.85 usft	Longitude:	-104.978904
Position Uncertainty:	0.0 ft	Slot Radius:	13-3/16 "	Grid Convergence:	0.34

Well	SRC Vista 44-2N-C					
Well Position	+N/-S	0.0 ft	Northing:	1,367,536.79 usft	Latitude:	40.34111
	+E/-W	0.0 ft	Easting:	3,145,255.85 usft	Longitude:	-104.97890
Position Uncertainty		0.0 ft	Wellhead Elevation:		Ground Level:	5,000.0

<b>Wellbore</b>	Wellbore #1				
<b>Magnetics</b>	<b>Model Name</b>	<b>Sample Date</b>	<b>Declination (°)</b>	<b>Dip Angle (°)</b>	<b>Field Strength (nT)</b>
	IGRF2010	9/21/2015	8.40	66.82	52,627

<b>Design</b>	Plan #2 (9-21-15)			
<b>Audit Notes:</b>				
<b>Version:</b>	<b>Phase:</b>	PROTOTYPE	<b>Tie On Depth:</b>	0.0
<b>Vertical Section:</b>	<b>Depth From (TVD)</b>	<b>+N/-S</b>	<b>+E/-W</b>	<b>Direction</b>
	(ft)	(ft)	(ft)	(°)
	0.0	0.0	0.0	108.17

<b>Plan Sections</b>										
Measured Depth (ft)	Inclination (°)	Azimuth (°)	Vertical Depth (ft)	+N/-S (ft)	+E/-W (ft)	Dogleg Rate (°/100usft)	Build Rate (°/100usft)	Turn Rate (°/100usft)	TFO (°)	Target
0.0	0.00	0.00	0.0	0.0	0.0	0.00	0.00	0.00	0.00	
200.0	0.00	0.00	200.0	0.0	0.0	0.00	0.00	0.00	0.00	
1,419.8	18.30	187.24	1,399.2	-191.6	-24.3	1.50	1.50	0.00	187.24	
5,318.4	18.30	187.24	5,100.6	-1,405.7	-178.6	0.00	0.00	0.00	0.00	
6,233.2	0.00	0.00	6,000.0	-1,549.4	-196.9	2.00	-2.00	0.00	180.00	
6,417.0	0.00	0.00	6,183.8	-1,549.4	-196.9	0.00	0.00	0.00	0.00	
7,542.0	90.00	89.50	6,900.0	-1,543.1	519.3	8.00	8.00	0.00	89.50	
11,615.0	90.00	89.50	6,900.0	-1,507.4	4,592.1	0.00	0.00	0.00	0.00	BHL 495'FSL & 460'F

<b>Database:</b>	US_EDM	<b>Local Co-ordinate Reference:</b>	Well SRC Vista 44-2N-C
<b>Company:</b>	Synergy Resources	<b>TVD Reference:</b>	WELL @ 5013.5ft (Ensign 131 RKB - 13.5')
<b>Project:</b>	SEC.2-T4N-R68W	<b>MD Reference:</b>	WELL @ 5013.5ft (Ensign 131 RKB - 13.5')
<b>Site:</b>	SRC Vista Pad Sec.2-T4N-R68W	<b>North Reference:</b>	True
<b>Well:</b>	SRC Vista 44-2N-C	<b>Survey Calculation Method:</b>	Minimum Curvature
<b>Wellbore:</b>	Wellbore #1		
<b>Design:</b>	Plan #2 (9-21-15)		

Planned Survey									
Measured Depth (ft)	Inclination (°)	Azimuth (°)	Vertical Depth (ft)	+N/-S (ft)	+E/-W (ft)	Vertical Section (ft)	Dogleg Rate (°/100usft)	Build Rate (°/100usft)	Turn Rate (°/100usft)
0.0	0.00	0.00	0.0	0.0	0.0	0.0	0.00	0.00	0.00
1.0	0.00	0.00	1.0	0.0	0.0	0.0	0.00	0.00	0.00
<b>SHL 2043'FSL &amp; 254'FWL</b>									
100.0	0.00	0.00	100.0	0.0	0.0	0.0	0.00	0.00	0.00
200.0	0.00	0.00	200.0	0.0	0.0	0.0	0.00	0.00	0.00
<b>KOP - Start Build 1.50</b>									
300.0	1.50	187.24	300.0	-1.3	-0.2	0.2	1.50	1.50	0.00
400.0	3.00	187.24	399.9	-5.2	-0.7	1.0	1.50	1.50	0.00
500.0	4.50	187.24	499.7	-11.7	-1.5	2.2	1.50	1.50	0.00
600.0	6.00	187.24	599.3	-20.8	-2.6	4.0	1.50	1.50	0.00
700.0	7.50	187.24	698.6	-32.4	-4.1	6.2	1.50	1.50	0.00
800.0	9.00	187.24	797.5	-46.7	-5.9	8.9	1.50	1.50	0.00
900.0	10.50	187.24	896.1	-63.5	-8.1	12.1	1.50	1.50	0.00
1,000.0	12.00	187.24	994.2	-82.8	-10.5	15.8	1.50	1.50	0.00
1,100.0	13.50	187.24	1,091.7	-104.7	-13.3	20.0	1.50	1.50	0.00
1,200.0	15.00	187.24	1,188.6	-129.1	-16.4	24.7	1.50	1.50	0.00
1,300.0	16.50	187.24	1,284.9	-156.0	-19.8	29.8	1.50	1.50	0.00
1,400.0	18.00	187.24	1,380.4	-185.5	-23.6	35.5	1.50	1.50	0.00
1,419.8	18.30	187.24	1,399.2	-191.6	-24.3	36.6	1.50	1.50	0.00
1,500.0	18.30	187.24	1,475.3	-216.6	-27.5	41.4	0.00	0.00	0.00
1,600.0	18.30	187.24	1,570.3	-247.7	-31.5	47.3	0.00	0.00	0.00
1,700.0	18.30	187.24	1,665.2	-278.8	-35.4	53.3	0.00	0.00	0.00
1,800.0	18.30	187.24	1,760.2	-310.0	-39.4	59.3	0.00	0.00	0.00
1,900.0	18.30	187.24	1,855.1	-341.1	-43.4	65.2	0.00	0.00	0.00
2,000.0	18.30	187.24	1,950.0	-372.3	-47.3	71.2	0.00	0.00	0.00
2,100.0	18.30	187.24	2,045.0	-403.4	-51.3	77.1	0.00	0.00	0.00
2,200.0	18.30	187.24	2,139.9	-434.6	-55.2	83.1	0.00	0.00	0.00
2,300.0	18.30	187.24	2,234.9	-465.7	-59.2	89.0	0.00	0.00	0.00
2,400.0	18.30	187.24	2,329.8	-496.8	-63.1	95.0	0.00	0.00	0.00
2,500.0	18.30	187.24	2,424.8	-528.0	-67.1	100.9	0.00	0.00	0.00
2,600.0	18.30	187.24	2,519.7	-559.1	-71.1	106.9	0.00	0.00	0.00
2,700.0	18.30	187.24	2,614.7	-590.3	-75.0	112.8	0.00	0.00	0.00
2,800.0	18.30	187.24	2,709.6	-621.4	-79.0	118.8	0.00	0.00	0.00
2,900.0	18.30	187.24	2,804.5	-652.6	-82.9	124.7	0.00	0.00	0.00
3,000.0	18.30	187.24	2,899.5	-683.7	-86.9	130.7	0.00	0.00	0.00
3,100.0	18.30	187.24	2,994.4	-714.8	-90.8	136.6	0.00	0.00	0.00
3,200.0	18.30	187.24	3,089.4	-746.0	-94.8	142.6	0.00	0.00	0.00
3,300.0	18.30	187.24	3,184.3	-777.1	-98.8	148.6	0.00	0.00	0.00
3,400.0	18.30	187.24	3,279.3	-808.3	-102.7	154.5	0.00	0.00	0.00
3,500.0	18.30	187.24	3,374.2	-839.4	-106.7	160.5	0.00	0.00	0.00
3,600.0	18.30	187.24	3,469.1	-870.6	-110.6	166.4	0.00	0.00	0.00
3,700.0	18.30	187.24	3,564.1	-901.7	-114.6	172.4	0.00	0.00	0.00
3,800.0	18.30	187.24	3,659.0	-932.9	-118.5	178.3	0.00	0.00	0.00
3,900.0	18.30	187.24	3,754.0	-964.0	-122.5	184.3	0.00	0.00	0.00
4,000.0	18.30	187.24	3,848.9	-995.1	-126.5	190.2	0.00	0.00	0.00
4,100.0	18.30	187.24	3,943.9	-1,026.3	-130.4	196.2	0.00	0.00	0.00
4,200.0	18.30	187.24	4,038.8	-1,057.4	-134.4	202.1	0.00	0.00	0.00
4,300.0	18.30	187.24	4,133.8	-1,088.6	-138.3	208.1	0.00	0.00	0.00
4,400.0	18.30	187.24	4,228.7	-1,119.7	-142.3	214.0	0.00	0.00	0.00
4,500.0	18.30	187.24	4,323.6	-1,150.9	-146.3	220.0	0.00	0.00	0.00
4,600.0	18.30	187.24	4,418.6	-1,182.0	-150.2	225.9	0.00	0.00	0.00
4,700.0	18.30	187.24	4,513.5	-1,213.1	-154.2	231.9	0.00	0.00	0.00
4,800.0	18.30	187.24	4,608.5	-1,244.3	-158.1	237.8	0.00	0.00	0.00
4,900.0	18.30	187.24	4,703.4	-1,275.4	-162.1	243.8	0.00	0.00	0.00

Database:	US_EDM	Local Co-ordinate Reference:	Well SRC Vista 44-2N-C
Company:	Synergy Resources	TVD Reference:	WELL @ 5013.5ft (Ensign 131 RKB - 13.5')
Project:	SEC.2-T4N-R68W	MD Reference:	WELL @ 5013.5ft (Ensign 131 RKB - 13.5')
Site:	SRC Vista Pad Sec.2-T4N-R68W	North Reference:	True
Well:	SRC Vista 44-2N-C	Survey Calculation Method:	Minimum Curvature
Wellbore:	Wellbore #1		
Design:	Plan #2 (9-21-15)		

Planned Survey									
Measured Depth (ft)	Inclination (°)	Azimuth (°)	Vertical Depth (ft)	+N/-S (ft)	+E/-W (ft)	Vertical Section (ft)	Dogleg Rate (°/100usft)	Build Rate (°/100usft)	Turn Rate (°/100usft)
5,000.0	18.30	187.24	4,798.4	-1,306.6	-166.0	249.8	0.00	0.00	0.00
5,100.0	18.30	187.24	4,893.3	-1,337.7	-170.0	255.7	0.00	0.00	0.00
5,200.0	18.30	187.24	4,988.3	-1,368.9	-174.0	261.7	0.00	0.00	0.00
5,300.0	18.30	187.24	5,083.2	-1,400.0	-177.9	267.6	0.00	0.00	0.00
5,318.4	18.30	187.24	5,100.7	-1,405.7	-178.6	268.7	0.00	0.00	0.00
Start Drop -2.00									
5,400.0	16.66	187.24	5,178.5	-1,430.0	-181.7	273.4	2.00	-2.00	0.00
5,500.0	14.66	187.24	5,274.8	-1,456.8	-185.1	278.5	2.00	-2.00	0.00
5,600.0	12.66	187.24	5,371.9	-1,480.3	-188.1	283.0	2.00	-2.00	0.00
5,700.0	10.66	187.24	5,469.9	-1,500.3	-190.7	286.8	2.00	-2.00	0.00
5,800.0	8.66	187.24	5,568.5	-1,517.0	-192.8	290.0	2.00	-2.00	0.00
5,900.0	6.66	187.24	5,667.6	-1,530.2	-194.5	292.5	2.00	-2.00	0.00
6,000.0	4.66	187.24	5,767.1	-1,540.0	-195.7	294.4	2.00	-2.00	0.00
6,100.0	2.66	187.24	5,866.9	-1,546.3	-196.5	295.6	2.00	-2.00	0.00
6,200.0	0.66	187.24	5,966.8	-1,549.2	-196.9	296.1	2.00	-2.00	0.00
6,233.2	0.00	0.00	6,000.0	-1,549.4	-196.9	296.2	2.00	-2.00	0.00
6,300.0	0.00	0.00	6,066.8	-1,549.4	-196.9	296.2	0.00	0.00	0.00
6,400.0	0.00	0.00	6,166.8	-1,549.4	-196.9	296.2	0.00	0.00	0.00
6,417.0	0.00	0.00	6,183.8	-1,549.4	-196.9	296.2	0.00	0.00	0.00
KOP #2 - Start Build 8.00									
6,500.0	6.64	89.50	6,266.6	-1,549.4	-192.1	300.7	8.00	8.00	0.00
6,600.0	14.64	89.50	6,364.8	-1,549.2	-173.6	318.2	8.00	8.00	0.00
6,700.0	22.64	89.50	6,459.5	-1,548.9	-141.7	348.5	8.00	8.00	0.00
6,800.0	30.64	89.50	6,548.8	-1,548.5	-96.9	390.9	8.00	8.00	0.00
6,900.0	38.64	89.50	6,631.0	-1,548.0	-40.1	444.7	8.00	8.00	0.00
7,000.0	46.64	89.50	6,704.5	-1,547.4	27.6	508.8	8.00	8.00	0.00
7,100.0	54.64	89.50	6,767.9	-1,546.8	104.8	582.0	8.00	8.00	0.00
7,200.0	62.64	89.50	6,819.9	-1,546.0	190.1	662.8	8.00	8.00	0.00
7,300.0	70.64	89.50	6,859.5	-1,545.2	281.9	749.7	8.00	8.00	0.00
7,400.0	78.64	89.50	6,886.0	-1,544.4	378.2	841.0	8.00	8.00	0.00
7,500.0	86.64	89.50	6,898.8	-1,543.5	477.3	934.9	8.00	8.00	0.00
7,542.0	90.00	89.50	6,900.0	-1,543.1	519.3	974.7	8.00	8.00	0.00
Start 4073.0 hold at 7542.0 MD - 7"									
7,600.0	90.00	89.50	6,900.0	-1,542.6	577.3	1,029.6	0.00	0.00	0.00
7,700.0	90.00	89.50	6,900.0	-1,541.7	677.3	1,124.3	0.00	0.00	0.00
7,800.0	90.00	89.50	6,900.0	-1,540.9	777.3	1,219.1	0.00	0.00	0.00
7,900.0	90.00	89.50	6,900.0	-1,540.0	877.3	1,313.8	0.00	0.00	0.00
8,000.0	90.00	89.50	6,900.0	-1,539.1	977.3	1,408.5	0.00	0.00	0.00
8,100.0	90.00	89.50	6,900.0	-1,538.2	1,077.3	1,503.3	0.00	0.00	0.00
8,200.0	90.00	89.50	6,900.0	-1,537.4	1,177.2	1,598.0	0.00	0.00	0.00
8,300.0	90.00	89.50	6,900.0	-1,536.5	1,277.2	1,692.7	0.00	0.00	0.00
8,400.0	90.00	89.50	6,900.0	-1,535.6	1,377.2	1,787.5	0.00	0.00	0.00
8,500.0	90.00	89.50	6,900.0	-1,534.7	1,477.2	1,882.2	0.00	0.00	0.00
8,600.0	90.00	89.50	6,900.0	-1,533.9	1,577.2	1,977.0	0.00	0.00	0.00
8,700.0	90.00	89.50	6,900.0	-1,533.0	1,677.2	2,071.7	0.00	0.00	0.00
8,800.0	90.00	89.50	6,900.0	-1,532.1	1,777.2	2,166.4	0.00	0.00	0.00
8,900.0	90.00	89.50	6,900.0	-1,531.2	1,877.2	2,261.2	0.00	0.00	0.00
9,000.0	90.00	89.50	6,900.0	-1,530.3	1,977.2	2,355.9	0.00	0.00	0.00
9,100.0	90.00	89.50	6,900.0	-1,529.5	2,077.2	2,450.6	0.00	0.00	0.00
9,200.0	90.00	89.50	6,900.0	-1,528.6	2,177.2	2,545.4	0.00	0.00	0.00
9,300.0	90.00	89.50	6,900.0	-1,527.7	2,277.2	2,640.1	0.00	0.00	0.00
9,400.0	90.00	89.50	6,900.0	-1,526.8	2,377.2	2,734.8	0.00	0.00	0.00
9,500.0	90.00	89.50	6,900.0	-1,526.0	2,477.2	2,829.6	0.00	0.00	0.00

<b>Database:</b>	US_EDM	<b>Local Co-ordinate Reference:</b>	Well SRC Vista 44-2N-C
<b>Company:</b>	Synergy Resources	<b>TVD Reference:</b>	WELL @ 5013.5ft (Ensign 131 RKB - 13.5')
<b>Project:</b>	SEC.2-T4N-R68W	<b>MD Reference:</b>	WELL @ 5013.5ft (Ensign 131 RKB - 13.5')
<b>Site:</b>	SRC Vista Pad Sec.2-T4N-R68W	<b>North Reference:</b>	True
<b>Well:</b>	SRC Vista 44-2N-C	<b>Survey Calculation Method:</b>	Minimum Curvature
<b>Wellbore:</b>	Wellbore #1		
<b>Design:</b>	Plan #2 (9-21-15)		

Planned Survey										
Measured Depth (ft)	Inclination (°)	Azimuth (°)	Vertical Depth (ft)	+N/-S (ft)	+E/-W (ft)	Vertical Section (ft)	Dogleg Rate (°/100usft)	Build Rate (°/100usft)	Turn Rate (°/100usft)	
9,600.0	90.00	89.50	6,900.0	-1,525.1	2,577.2	2,924.3	0.00	0.00	0.00	
9,700.0	90.00	89.50	6,900.0	-1,524.2	2,677.2	3,019.0	0.00	0.00	0.00	
9,800.0	90.00	89.50	6,900.0	-1,523.3	2,777.2	3,113.8	0.00	0.00	0.00	
9,900.0	90.00	89.50	6,900.0	-1,522.5	2,877.2	3,208.5	0.00	0.00	0.00	
10,000.0	90.00	89.50	6,900.0	-1,521.6	2,977.2	3,303.2	0.00	0.00	0.00	
10,100.0	90.00	89.50	6,900.0	-1,520.7	3,077.2	3,398.0	0.00	0.00	0.00	
10,200.0	90.00	89.50	6,900.0	-1,519.8	3,177.2	3,492.7	0.00	0.00	0.00	
10,300.0	90.00	89.50	6,900.0	-1,519.0	3,277.2	3,587.4	0.00	0.00	0.00	
10,400.0	90.00	89.50	6,900.0	-1,518.1	3,377.2	3,682.2	0.00	0.00	0.00	
10,500.0	90.00	89.50	6,900.0	-1,517.2	3,477.2	3,776.9	0.00	0.00	0.00	
10,600.0	90.00	89.50	6,900.0	-1,516.3	3,577.2	3,871.6	0.00	0.00	0.00	
10,700.0	90.00	89.50	6,900.0	-1,515.5	3,677.2	3,966.4	0.00	0.00	0.00	
10,800.0	90.00	89.50	6,900.0	-1,514.6	3,777.1	4,061.1	0.00	0.00	0.00	
10,900.0	90.00	89.50	6,900.0	-1,513.7	3,877.1	4,155.9	0.00	0.00	0.00	
11,000.0	90.00	89.50	6,900.0	-1,512.8	3,977.1	4,250.6	0.00	0.00	0.00	
11,100.0	90.00	89.50	6,900.0	-1,511.9	4,077.1	4,345.3	0.00	0.00	0.00	
11,200.0	90.00	89.50	6,900.0	-1,511.1	4,177.1	4,440.1	0.00	0.00	0.00	
11,300.0	90.00	89.50	6,900.0	-1,510.2	4,277.1	4,534.8	0.00	0.00	0.00	
11,400.0	90.00	89.50	6,900.0	-1,509.3	4,377.1	4,629.5	0.00	0.00	0.00	
11,500.0	90.00	89.50	6,900.0	-1,508.4	4,477.1	4,724.3	0.00	0.00	0.00	
11,600.0	90.00	89.50	6,900.0	-1,507.6	4,577.1	4,819.0	0.00	0.00	0.00	
11,615.0	90.00	89.50	6,900.0	-1,507.4	4,592.1	4,833.2	0.00	0.00	0.00	
TD at 11615.0 - BHL 495°FSL & 460°FEL										

Design Targets										
Target Name	Dip Angle (°)	Dip Dir. (°)	TVD (ft)	+N/-S (ft)	+E/-W (ft)	Northing (usft)	Easting (usft)	Latitude	Longitude	
- hit/miss target										
- Shape										
SHL 2043°FSL & 254°FV	0.00	0.00	1.0	0.0	0.0	1,367,536.80	3,145,255.85	40.341118	-104.978904	
- plan hits target center										
- Point										
BHL 495°FSL & 460°FEL	0.00	0.00	6,900.0	-1,507.4	4,592.1	1,366,056.43	3,149,856.52	40.336979	-104.962432	
- plan hits target center										
- Point										

Casing Points							Casing Diameter (")	Hole Diameter (")
Measured Depth (ft)	Vertical Depth (ft)	Name						
7,542.0	6,900.0	7"					7	7-1/2

<b>Database:</b>	US_EDM	<b>Local Co-ordinate Reference:</b>	Well SRC Vista 44-2N-C
<b>Company:</b>	Synergy Resources	<b>TVD Reference:</b>	WELL @ 5013.5ft (Ensign 131 RKB - 13.5')
<b>Project:</b>	SEC.2-T4N-R68W	<b>MD Reference:</b>	WELL @ 5013.5ft (Ensign 131 RKB - 13.5')
<b>Site:</b>	SRC Vista Pad Sec.2-T4N-R68W	<b>North Reference:</b>	True
<b>Well:</b>	SRC Vista 44-2N-C	<b>Survey Calculation Method:</b>	Minimum Curvature
<b>Wellbore:</b>	Wellbore #1		
<b>Design:</b>	Plan #2 (9-21-15)		

Plan Annotations				
Measured Depth (ft)	Vertical Depth (ft)	Local Coordinates		Comment
		+N/-S (ft)	+E/-W (ft)	
200.0	200.0	0.0	0.0	KOP - Start Build 1.50
5,318.4	5,100.7	-1,405.7	-178.6	Start Drop -2.00
6,417.0	6,183.8	-1,549.4	-196.9	KOP #2 - Start Build 8.00
7,542.0	6,900.0	-1,543.1	519.3	Start 4073.0 hold at 7542.0 MD
11,615.0	6,900.0	-1,507.4	4,592.1	TD at 11615.0



# Directional

## **Synergy Resources**

**SEC.2-T4N-R68W**

**SRC Vista Pad Sec.2-T4N-R68W**

**SRC Vista 44-2N-C**

**Wellbore #1**

**Plan #2 (9-21-15)**

## **Anticollision Report**

**21 September, 2015**





<b>Company:</b>	Synergy Resources	<b>Local Co-ordinate Reference:</b>	Well SRC Vista 44-2N-C
<b>Project:</b>	SEC.2-T4N-R68W	<b>TVD Reference:</b>	WELL @ 5013.5ft (Ensign 131 RKB - 13.5')
<b>Reference Site:</b>	SRC Vista Pad Sec.2-T4N-R68W	<b>MD Reference:</b>	WELL @ 5013.5ft (Ensign 131 RKB - 13.5')
<b>Site Error:</b>	0.0 ft	<b>North Reference:</b>	True
<b>Reference Well:</b>	SRC Vista 44-2N-C	<b>Survey Calculation Method:</b>	Minimum Curvature
<b>Well Error:</b>	0.0 ft	<b>Output errors are at</b>	2.00 sigma
<b>Reference Wellbore</b>	Wellbore #1	<b>Database:</b>	US_EDM
<b>Reference Design:</b>	Plan #2 (9-21-15)	<b>Offset TVD Reference:</b>	Offset Datum

<b>Reference</b>	Plan #2 (9-21-15)		
<b>Filter type:</b>	NO GLOBAL FILTER: Using user defined selection & filtering criteria		
<b>Interpolation Method:</b>	Stations	<b>Error Model:</b>	ISCWSA
<b>Depth Range:</b>	Unlimited	<b>Scan Method:</b>	Closest Approach 3D
<b>Results Limited by:</b>	Maximum center-center distance of 1,000.0 ft	<b>Error Surface:</b>	Elliptical Conic
<b>Warning Levels Evaluated at:</b>	2.00 Sigma	<b>Casing Method:</b>	Not applied

<b>Survey Tool Program</b>	<b>Date</b> 9/21/2015	
<b>From (ft)</b>	<b>To (ft)</b>	<b>Survey (Wellbore)</b>
0.0	11,615.0	Plan #2 (9-21-15) (Wellbore #1)
		<b>Tool Name</b>
		MWD
		<b>Description</b>
		MWD - Standard

<b>Summary</b>						
<b>Site Name</b>	<b>Reference Measured Depth (ft)</b>	<b>Offset Measured Depth (ft)</b>	<b>Distance Between Centres (ft)</b>	<b>Distance Between Ellipses (ft)</b>	<b>Separation Factor</b>	<b>Warning</b>
<b>Offset Well - Wellbore - Design</b>						
Pratt 14-2D Pad Sec.2-T4N-R68W						
Pratt 14-2D - Wellbore #1 - Wellbore #1	7,522.8	7,013.9	285.9	244.2	6.848	CC, ES
Pratt 14-2D - Wellbore #1 - Wellbore #1	7,542.0	7,012.4	286.6	244.5	6.811	SF
Pratt 24-2D - Wellbore #1 - Wellbore #1	8,660.8	7,017.4	293.1	224.7	4.289	CC, ES
Pratt 24-2D - Wellbore #1 - Wellbore #1	8,700.0	7,020.1	295.7	226.3	4.265	SF
SRC Vista Pad Sec.2-T4N-R68W						
SRC Vista 43-2C - Wellbore #1 - Plan #2 (9-21-15)	200.0	200.0	140.3	139.6	208.001	CC, ES
SRC Vista 43-2C - Wellbore #1 - Plan #2 (9-21-15)	1,100.0	1,091.7	245.3	240.5	51.120	SF
SRC Vista 43-2N-A - Wellbore #1 - Plan #2 (9-21-15)	200.0	200.0	159.9	159.3	237.182	CC, ES
SRC Vista 43-2N-A - Wellbore #1 - Plan #2 (9-21-15)	1,200.0	1,188.6	289.5	284.2	54.930	SF
SRC Vista 43-2N-C - Wellbore #1 - Plan #2 (9-21-15)	200.0	200.0	120.2	119.5	178.286	CC, ES
SRC Vista 43-2N-C - Wellbore #1 - Plan #2 (9-21-15)	4,400.0	4,337.9	986.4	963.9	43.892	SF
SRC Vista 44-2C - Wellbore #1 - Plan #2 (9-21-15)	200.0	200.0	20.0	19.4	29.706	CC, ES
SRC Vista 44-2C - Wellbore #1 - Plan #2 (9-21-15)	11,615.0	11,865.5	411.9	233.4	2.307	SF
SRC Vista 44-2N-A - Wellbore #1 - Plan #2 (9-21-15)	200.0	200.0	40.1	39.4	59.412	CC, ES
SRC Vista 44-2N-A - Wellbore #1 - Plan #2 (9-21-15)	11,615.0	11,516.6	479.4	218.3	1.836	SF
SRC Vista D-2C - Wellbore #1 - Plan #2 (9-21-15)	200.0	200.0	80.1	79.5	118.855	CC, ES
SRC Vista D-2C - Wellbore #1 - Plan #2 (9-21-15)	6,417.0	6,243.7	945.1	894.8	18.800	SF
SRC Vista D-2N-A - Wellbore #1 - Plan #2 (9-21-15)	200.0	200.0	100.2	99.5	148.571	CC, ES
SRC Vista D-2N-A - Wellbore #1 - Plan #2 (9-21-15)	5,100.0	5,076.9	900.7	873.8	33.480	SF
SRC Vista D-2N-C - Wellbore #1 - Plan #2 (9-21-15)	200.0	200.0	60.1	59.4	89.153	CC, ES
SRC Vista D-2N-C - Wellbore #1 - Plan #2 (9-21-15)	11,615.0	11,460.4	776.3	515.2	2.974	SF
SRC Vista S-2N-C - Wellbore #1 - Plan #2 (9-21-15)	200.0	200.0	180.0	179.3	266.885	CC, ES
SRC Vista S-2N-C - Wellbore #1 - Plan #2 (9-21-15)	1,300.0	1,284.9	336.6	330.8	58.600	SF

<b>Offset Design</b>												
Pratt 14-2D Pad Sec.2-T4N-R68W - Pratt 14-2D - Wellbore #1 - Wellbore #1												
Survey Program: 108-MWD												
<b>Reference</b>		<b>Offset</b>		<b>Semi Major Axis</b>			<b>Distance</b>					
<b>Measured Depth (ft)</b>	<b>Vertical Depth (ft)</b>	<b>Measured Depth (ft)</b>	<b>Vertical Depth (ft)</b>	<b>Reference (ft)</b>	<b>Offset (ft)</b>	<b>Highside Toolface (°)</b>	<b>Offset Wellbore Centre +N/-S (ft)</b>	<b>+E/-W (ft)</b>	<b>Between Centres (ft)</b>	<b>Between Ellipses (ft)</b>	<b>Minimum Separation (ft)</b>	<b>Separation Factor</b>
2,200.0	2,139.9	2,223.6	2,212.0	9.6	5.4	-89.30	-594.6	925.7	996.2	981.3	14.88	66.944
2,300.0	2,234.9	2,318.3	2,305.2	10.2	5.7	-90.17	-608.6	917.2	989.0	973.2	15.80	62.577
2,400.0	2,329.8	2,414.0	2,399.4	10.9	6.0	-91.05	-623.1	908.9	982.3	965.6	16.74	58.697
2,500.0	2,424.8	2,513.1	2,497.0	11.5	6.3	-91.95	-638.3	900.4	976.1	958.4	17.67	55.230
2,600.0	2,519.7	2,611.5	2,594.1	12.1	6.7	-92.93	-652.3	891.9	970.0	951.4	18.60	52.147

CC - Min centre to center distance or convergent point, SF - min separation factor, ES - min ellipse separation

<b>Company:</b>	Synergy Resources	<b>Local Co-ordinate Reference:</b>	Well SRC Vista 44-2N-C
<b>Project:</b>	SEC.2-T4N-R68W	<b>TVD Reference:</b>	WELL @ 5013.5ft (Ensign 131 RKB - 13.5')
<b>Reference Site:</b>	SRC Vista Pad Sec.2-T4N-R68W	<b>MD Reference:</b>	WELL @ 5013.5ft (Ensign 131 RKB - 13.5')
<b>Site Error:</b>	0.0 ft	<b>North Reference:</b>	True
<b>Reference Well:</b>	SRC Vista 44-2N-C	<b>Survey Calculation Method:</b>	Minimum Curvature
<b>Well Error:</b>	0.0 ft	<b>Output errors are at</b>	2.00 sigma
<b>Reference Wellbore</b>	Wellbore #1	<b>Database:</b>	US_EDM
<b>Reference Design:</b>	Plan #2 (9-21-15)	<b>Offset TVD Reference:</b>	Offset Datum

Offset Design													Offset Site Error:	0.0 ft
Survey Program: 108-MWD													Offset Well Error:	0.0 ft
Reference		Offset		Semi Major Axis			Distance						Warning	
Measured Depth (ft)	Vertical Depth (ft)	Measured Depth (ft)	Vertical Depth (ft)	Reference (ft)	Offset (ft)	Highside Toolface (°)	Offset Wellbore Centre +N/-S (ft)	+E/-W (ft)	Between Centres (ft)	Between Ellipses (ft)	Minimum Separation (ft)	Separation Factor		
2,700.0	2,614.7	2,708.9	2,690.0	12.8	7.0	-93.89	-666.4	883.7	964.3	944.8	19.52	49.396		
2,800.0	2,709.6	2,809.3	2,789.0	13.4	7.4	-94.88	-681.1	875.1	958.9	938.4	20.46	46.856		
2,900.0	2,804.5	2,907.2	2,885.6	14.0	7.7	-95.90	-694.9	866.6	953.6	932.2	21.37	44.624		
3,000.0	2,899.5	3,008.5	2,985.7	14.7	8.0	-97.05	-707.6	857.9	948.7	926.4	22.26	42.621		
3,100.0	2,994.4	3,112.1	3,088.1	15.3	8.3	-98.28	-719.9	848.4	943.5	920.4	23.14	40.782		
3,200.0	3,089.4	3,210.0	3,184.8	15.9	8.7	-99.43	-732.0	839.0	938.4	914.4	24.00	39.097		
3,300.0	3,184.3	3,297.6	3,271.4	16.6	9.0	-100.46	-742.9	831.1	934.2	909.3	24.83	37.625		
3,400.0	3,279.3	3,387.9	3,360.7	17.2	9.2	-101.55	-753.7	824.1	931.6	905.9	25.64	36.330		
3,500.0	3,374.2	3,488.5	3,460.3	17.9	9.6	-102.77	-765.8	816.6	929.8	903.4	26.46	35.137		
3,600.0	3,469.1	3,611.9	3,582.1	18.5	10.0	-104.18	-782.3	805.3	926.5	899.2	27.34	33.883		
3,700.0	3,564.1	3,709.6	3,678.3	19.1	10.4	-105.26	-796.3	795.3	922.5	894.3	28.18	32.737		
3,800.0	3,659.0	3,802.8	3,770.1	19.8	10.7	-106.29	-809.7	786.0	919.1	890.1	28.98	31.711		
3,900.0	3,754.0	3,895.8	3,861.7	20.4	11.0	-107.32	-823.0	777.3	916.6	886.8	29.77	30.793		
4,000.0	3,848.9	3,989.0	3,953.6	21.0	11.3	-108.37	-836.2	769.1	915.0	884.5	30.53	29.968		
4,087.6	3,932.1	4,067.8	4,031.4	21.6	11.6	-109.28	-846.8	762.6	914.5	883.4	31.18	29.330		
4,100.0	3,943.9	4,078.9	4,042.4	21.7	11.6	-109.41	-848.3	761.7	914.6	883.3	31.27	29.245		
4,200.0	4,038.8	4,171.6	4,134.0	22.3	11.9	-110.52	-860.1	754.7	915.3	883.3	31.99	28.607		
4,300.0	4,133.8	4,270.2	4,231.5	23.0	12.3	-111.68	-872.8	747.8	916.7	884.0	32.71	28.023		
4,400.0	4,228.7	4,377.6	4,337.6	23.6	12.6	-112.89	-887.5	739.6	917.9	884.4	33.44	27.447		
4,500.0	4,323.6	4,477.7	4,436.4	24.2	13.0	-114.01	-901.5	731.5	918.8	884.7	34.15	26.909		
4,600.0	4,418.6	4,595.3	4,552.3	24.9	13.4	-115.30	-918.7	720.9	919.2	884.3	34.86	26.366		
4,700.0	4,513.5	4,691.6	4,646.9	25.5	13.8	-116.32	-933.7	711.3	918.5	883.0	35.55	25.840		
4,709.4	4,522.4	4,700.0	4,655.2	25.6	13.8	-116.41	-934.9	710.4	918.5	882.9	35.61	25.794		
4,800.0	4,608.5	4,782.9	4,736.8	26.1	14.1	-117.32	-947.1	702.6	919.0	882.8	36.20	25.387		
4,900.0	4,703.4	4,877.0	4,829.6	26.8	14.4	-118.39	-960.2	694.1	920.4	883.6	36.82	24.998		
5,000.0	4,798.4	4,975.8	4,927.1	27.4	14.8	-119.51	-973.8	685.3	922.4	885.0	37.43	24.644		
5,100.0	4,893.3	5,076.2	5,026.1	28.1	15.1	-120.62	-988.1	676.3	924.6	886.6	38.03	24.313		
5,200.0	4,988.3	5,176.6	5,125.0	28.7	15.5	-121.76	-1,002.0	666.9	926.9	888.3	38.60	24.013		
5,300.0	5,083.2	5,274.9	5,222.0	29.3	15.8	-122.89	-1,015.3	657.4	929.4	890.2	39.14	23.743		
5,318.4	5,100.6	5,291.3	5,238.2	29.4	15.9	-123.08	-1,017.4	655.8	929.9	890.7	39.24	23.699		
5,400.0	5,178.5	5,364.2	5,310.1	29.9	16.1	-123.96	-1,026.3	648.7	932.1	892.6	39.57	23.555		
5,500.0	5,274.8	5,451.0	5,396.0	30.3	16.4	-124.88	-1,035.9	640.9	934.4	894.5	39.89	23.421		
5,600.0	5,371.9	5,540.6	5,484.7	30.6	16.7	-125.56	-1,046.9	634.6	936.1	895.9	40.25	23.259		
5,700.0	5,469.9	5,641.7	5,584.8	30.9	17.0	-126.06	-1,060.0	628.2	936.3	895.6	40.65	23.034		
5,800.0	5,568.5	5,751.5	5,693.4	31.2	17.4	-126.35	-1,074.9	620.9	933.9	892.8	41.10	22.724		
5,900.0	5,667.6	5,856.7	5,797.2	31.4	17.8	-126.41	-1,089.4	613.1	928.5	886.9	41.55	22.346		
6,000.0	5,767.1	5,963.8	5,902.9	31.6	18.1	-126.29	-1,104.0	604.2	920.5	878.4	42.02	21.904		
6,100.0	5,866.9	6,072.7	6,010.2	31.8	18.5	-125.86	-1,120.1	594.7	909.4	866.8	42.56	21.369		
6,200.0	5,966.8	6,178.0	6,113.7	31.9	19.0	-125.07	-1,137.7	585.5	895.4	852.2	43.16	20.746		
6,233.2	6,000.0	6,210.0	6,145.1	31.9	19.1	62.47	-1,143.1	582.6	890.2	849.7	40.48	21.993		
6,300.0	6,066.8	6,274.5	6,208.4	32.0	19.3	62.91	-1,153.7	576.8	879.7	839.1	40.63	21.654		
6,400.0	6,166.8	6,380.5	6,312.5	32.0	19.7	63.58	-1,170.3	566.4	863.9	823.0	40.87	21.139		
6,417.0	6,183.8	6,398.7	6,330.5	32.1	19.8	63.69	-1,173.1	564.4	861.1	820.2	40.91	21.048		
6,450.0	6,216.8	6,431.9	6,363.1	32.1	19.9	-25.85	-1,178.1	560.7	854.9	810.5	44.38	19.263		
6,500.0	6,266.6	6,478.6	6,409.0	32.1	20.1	-26.11	-1,185.1	555.6	843.1	799.0	44.10	19.118		
6,550.0	6,316.0	6,524.7	6,454.3	32.1	20.3	-26.60	-1,191.8	550.6	828.4	784.8	43.57	19.013		
6,600.0	6,364.8	6,571.5	6,500.3	32.2	20.4	-27.35	-1,198.6	545.6	810.8	768.0	42.80	18.945		
6,650.0	6,412.7	6,618.2	6,546.2	32.2	20.6	-28.39	-1,205.3	540.4	790.3	748.5	41.77	18.917		
6,700.0	6,459.5	6,663.3	6,590.6	32.2	20.8	-29.79	-1,211.6	535.3	766.9	726.4	40.52	18.928		
6,750.0	6,504.9	6,706.1	6,632.7	32.2	20.9	-31.57	-1,217.6	530.4	741.0	701.9	39.06	18.972		
6,800.0	6,548.8	6,746.8	6,672.8	32.2	21.1	-33.81	-1,223.4	525.8	712.5	675.1	37.44	19.034		
6,850.0	6,590.9	6,785.5	6,710.8	32.2	21.2	-36.59	-1,228.9	521.3	681.9	646.1	35.73	19.084		

CC - Min centre to center distance or convergent point, SF - min separation factor, ES - min ellipse separation

<b>Company:</b>	Synergy Resources	<b>Local Co-ordinate Reference:</b>	Well SRC Vista 44-2N-C
<b>Project:</b>	SEC.2-T4N-R68W	<b>TVD Reference:</b>	WELL @ 5013.5ft (Ensign 131 RKB - 13.5')
<b>Reference Site:</b>	SRC Vista Pad Sec.2-T4N-R68W	<b>MD Reference:</b>	WELL @ 5013.5ft (Ensign 131 RKB - 13.5')
<b>Site Error:</b>	0.0 ft	<b>North Reference:</b>	True
<b>Reference Well:</b>	SRC Vista 44-2N-C	<b>Survey Calculation Method:</b>	Minimum Curvature
<b>Well Error:</b>	0.0 ft	<b>Output errors are at</b>	2.00 sigma
<b>Reference Wellbore</b>	Wellbore #1	<b>Database:</b>	US_EDM
<b>Reference Design:</b>	Plan #2 (9-21-15)	<b>Offset TVD Reference:</b>	Offset Datum

Offset Design													Offset Site Error:	0.0 ft
Survey Program: 108-MWD													Offset Well Error:	0.0 ft
Reference		Offset		Semi Major Axis			Distance						Warning	
Measured Depth (ft)	Vertical Depth (ft)	Measured Depth (ft)	Vertical Depth (ft)	Reference (ft)	Offset (ft)	Highside Toolface (°)	Offset Wellbore Centre +N/-S (ft)	+E/-W (ft)	Between Centres (ft)	Between Ellipses (ft)	Minimum Separation (ft)	Separation Factor		
6,900.0	6,631.0	6,820.4	6,745.1	32.2	21.4	-39.95	-1,233.9	517.4	649.2	615.1	34.06	19.060		
6,950.0	6,668.9	6,852.1	6,776.3	32.2	21.5	-43.98	-1,238.4	513.8	614.9	582.3	32.60	18.864		
7,000.0	6,704.5	6,881.5	6,805.2	32.3	21.6	-48.78	-1,242.4	510.6	579.3	547.7	31.55	18.359		
7,050.0	6,737.6	6,908.5	6,831.8	32.3	21.7	-54.37	-1,246.1	507.6	542.7	511.5	31.16	17.417		
7,100.0	6,767.9	6,929.0	6,852.0	32.3	21.8	-60.23	-1,248.8	505.4	505.5	474.1	31.49	16.057		
7,150.0	6,795.4	6,952.5	6,875.2	32.4	21.8	-67.20	-1,251.8	502.9	468.4	435.8	32.64	14.352		
7,200.0	6,819.9	6,970.0	6,892.4	32.4	21.9	-73.87	-1,254.0	501.1	432.0	397.8	34.18	12.638		
7,250.0	6,841.3	6,984.8	6,907.1	32.5	22.0	-80.22	-1,255.8	499.6	397.0	361.2	35.83	11.079		
7,300.0	6,859.5	6,996.8	6,919.0	32.6	22.0	-85.84	-1,257.2	498.4	364.5	327.2	37.33	9.764		
7,350.0	6,874.4	7,006.0	6,928.0	32.8	22.0	-90.43	-1,258.2	497.5	335.8	297.2	38.57	8.705		
7,400.0	6,886.0	7,012.1	6,934.1	32.9	22.0	-93.79	-1,258.9	497.0	312.2	272.6	39.60	7.885		
7,450.0	6,894.1	7,015.1	6,937.1	33.1	22.1	-95.82	-1,259.3	496.7	295.5	255.0	40.50	7.296		
7,500.0	6,898.8	7,015.0	6,936.9	33.4	22.1	-96.49	-1,259.2	496.7	286.9	245.5	41.36	6.936		
7,522.8	6,899.7	7,013.9	6,935.8	33.5	22.1	-96.33	-1,259.1	496.8	285.9	244.2	41.76	6.848 CC, ES		
7,542.0	6,900.0	7,012.4	6,934.3	33.6	22.0	-95.98	-1,259.0	496.9	286.6	244.5	42.08	6.811 SF		
7,600.0	6,900.0	7,007.1	6,929.1	34.0	22.0	-94.93	-1,258.4	497.4	296.3	253.2	43.07	6.879		
7,700.0	6,900.0	6,997.8	6,919.9	34.8	22.0	-93.08	-1,257.3	498.3	336.4	291.5	44.89	7.493		
7,800.0	6,900.0	6,988.2	6,910.4	35.9	22.0	-91.18	-1,256.2	499.3	397.9	351.1	46.82	8.499		
7,900.0	6,900.0	6,978.4	6,900.7	37.3	21.9	-89.25	-1,255.0	500.3	472.6	423.8	48.81	9.682		
8,000.0	6,900.0	6,968.2	6,890.7	38.9	21.9	-87.27	-1,253.8	501.3	555.1	504.3	50.84	10.918		
8,100.0	6,900.0	6,957.8	6,880.4	40.7	21.9	-85.26	-1,252.5	502.4	642.4	589.5	52.89	12.147		
8,200.0	6,900.0	6,947.0	6,869.8	42.6	21.8	-83.22	-1,251.2	503.5	732.9	677.9	54.92	13.343		
8,300.0	6,900.0	6,936.0	6,858.9	44.7	21.8	-81.16	-1,249.7	504.7	825.4	768.4	56.92	14.499		
8,400.0	6,900.0	6,924.7	6,847.8	46.9	21.8	-79.11	-1,248.2	505.9	919.3	860.4	58.88	15.612		

<b>Company:</b>	Synergy Resources	<b>Local Co-ordinate Reference:</b>	Well SRC Vista 44-2N-C
<b>Project:</b>	SEC.2-T4N-R68W	<b>TVD Reference:</b>	WELL @ 5013.5ft (Ensign 131 RKB - 13.5')
<b>Reference Site:</b>	SRC Vista Pad Sec.2-T4N-R68W	<b>MD Reference:</b>	WELL @ 5013.5ft (Ensign 131 RKB - 13.5')
<b>Site Error:</b>	0.0 ft	<b>North Reference:</b>	True
<b>Reference Well:</b>	SRC Vista 44-2N-C	<b>Survey Calculation Method:</b>	Minimum Curvature
<b>Well Error:</b>	0.0 ft	<b>Output errors are at</b>	2.00 sigma
<b>Reference Wellbore</b>	Wellbore #1	<b>Database:</b>	US_EDM
<b>Reference Design:</b>	Plan #2 (9-21-15)	<b>Offset TVD Reference:</b>	Offset Datum

Offset Design													Offset Site Error:	0.0 ft
Survey Program: 250-MWD													Offset Well Error:	0.0 ft
Reference		Offset		Semi Major Axis			Distance						Warning	
Measured Depth (ft)	Vertical Depth (ft)	Measured Depth (ft)	Vertical Depth (ft)	Reference (ft)	Offset (ft)	Highside Toolface (°)	Offset Wellbore Centre +N/-S (ft)	+E/-W (ft)	Between Centres (ft)	Between Ellipses (ft)	Minimum Separation (ft)	Separation Factor		
7,800.0	6,900.0	6,951.8	6,874.6	35.9	22.0	-84.66	-1,234.3	1,630.6	907.2	861.1	46.07	19.693		
7,900.0	6,900.0	6,960.3	6,882.9	37.3	22.1	-86.24	-1,235.4	1,631.3	813.5	764.9	48.58	16.745		
8,000.0	6,900.0	6,968.5	6,891.1	38.9	22.1	-87.79	-1,236.4	1,631.9	721.3	670.2	51.14	14.104		
8,100.0	6,900.0	6,976.5	6,899.0	40.7	22.1	-89.31	-1,237.4	1,632.5	631.5	577.8	53.74	11.751		
8,200.0	6,900.0	6,984.3	6,906.6	42.6	22.1	-90.80	-1,238.4	1,633.1	545.1	488.8	56.35	9.673		
8,300.0	6,900.0	6,991.8	6,914.1	44.7	22.2	-92.26	-1,239.4	1,633.6	464.1	405.2	58.97	7.870		
8,400.0	6,900.0	6,999.2	6,921.4	46.9	22.2	-93.69	-1,240.3	1,634.2	391.9	330.3	61.58	6.363		
8,500.0	6,900.0	7,006.3	6,928.5	49.2	22.2	-95.08	-1,241.2	1,634.7	334.1	269.9	64.18	5.205		
8,600.0	6,900.0	7,013.3	6,935.4	51.5	22.2	-96.44	-1,242.1	1,635.2	299.3	232.5	66.76	4.483		
8,660.8	6,900.0	7,017.4	6,939.5	53.0	22.2	-97.25	-1,242.6	1,635.5	293.1	224.7	68.32	4.289 CC, ES		
8,700.0	6,900.0	7,020.1	6,942.1	53.9	22.3	-97.76	-1,242.9	1,635.7	295.7	226.3	69.32	4.265 SF		
8,800.0	6,900.0	7,026.7	6,948.6	56.4	22.3	-99.05	-1,243.8	1,636.1	324.3	252.5	71.84	4.514		
8,900.0	6,900.0	7,033.1	6,955.0	58.9	22.3	-100.30	-1,244.6	1,636.6	377.9	303.6	74.34	5.084		
9,000.0	6,900.0	7,039.4	6,961.2	61.4	22.3	-101.52	-1,245.4	1,637.0	447.7	370.9	76.80	5.829		
9,100.0	6,900.0	7,045.5	6,967.3	64.0	22.3	-102.71	-1,246.1	1,637.4	527.2	448.0	79.23	6.654		
9,200.0	6,900.0	7,051.5	6,973.2	66.5	22.4	-103.86	-1,246.9	1,637.8	612.7	531.0	81.62	7.506		
9,300.0	6,900.0	7,057.0	6,978.6	69.1	22.4	-104.92	-1,247.5	1,638.1	701.9	617.9	83.99	8.357		
9,400.0	6,900.0	7,063.3	6,984.8	71.7	22.4	-106.12	-1,248.3	1,638.5	793.7	707.4	86.28	9.199		
9,500.0	6,900.0	7,069.1	6,990.6	74.4	22.4	-107.22	-1,249.0	1,638.9	887.2	798.7	88.54	10.020		
9,600.0	6,900.0	7,074.8	6,996.2	77.0	22.4	-108.29	-1,249.7	1,639.3	982.0	891.2	90.77	10.819		

<b>Company:</b>	Synergy Resources	<b>Local Co-ordinate Reference:</b>	Well SRC Vista 44-2N-C
<b>Project:</b>	SEC.2-T4N-R68W	<b>TVD Reference:</b>	WELL @ 5013.5ft (Ensign 131 RKB - 13.5')
<b>Reference Site:</b>	SRC Vista Pad Sec.2-T4N-R68W	<b>MD Reference:</b>	WELL @ 5013.5ft (Ensign 131 RKB - 13.5')
<b>Site Error:</b>	0.0 ft	<b>North Reference:</b>	True
<b>Reference Well:</b>	SRC Vista 44-2N-C	<b>Survey Calculation Method:</b>	Minimum Curvature
<b>Well Error:</b>	0.0 ft	<b>Output errors are at</b>	2.00 sigma
<b>Reference Wellbore</b>	Wellbore #1	<b>Database:</b>	US_EDM
<b>Reference Design:</b>	Plan #2 (9-21-15)	<b>Offset TVD Reference:</b>	Offset Datum

Offset Design													Offset Site Error:	0.0 ft
Survey Program: 0-MWD													Offset Well Error:	0.0 ft
Reference		Offset		Semi Major Axis			Distance							Warning
Measured Depth (ft)	Vertical Depth (ft)	Measured Depth (ft)	Vertical Depth (ft)	Reference (ft)	Offset (ft)	Highside Toolface (°)	Offset Wellbore Centre +N/-S (ft)	+E/-W (ft)	Between Centres (ft)	Between Ellipses (ft)	Minimum Separation (ft)	Separation Factor		
0.0	0.0	0.0	0.0	0.0	0.0	-0.11	140.3	-0.3	140.3					
100.0	100.0	100.0	100.0	0.1	0.1	-0.11	140.3	-0.3	140.3	140.0	0.22	624.004		
200.0	200.0	200.0	200.0	0.3	0.3	-0.11	140.3	-0.3	140.3	139.6	0.67	208.001	CC, ES	
300.0	300.0	300.0	300.0	0.5	0.6	172.71	140.3	-0.3	141.6	140.4	1.11	127.460		
400.0	399.9	399.9	399.9	0.7	0.8	172.90	140.3	-0.3	145.4	143.9	1.55	93.809		
500.0	499.7	499.7	499.7	1.0	1.0	173.19	140.3	-0.3	151.9	149.9	2.00	75.816		
600.0	599.3	599.3	599.3	1.2	1.2	173.56	140.3	-0.3	161.0	158.6	2.46	65.357		
700.0	698.6	698.6	698.6	1.5	1.5	173.98	140.3	-0.3	172.7	169.8	2.93	59.006		
800.0	797.5	797.5	797.5	1.8	1.7	174.42	140.3	-0.3	187.0	183.6	3.39	55.118		
900.0	896.1	896.1	896.1	2.2	1.9	174.86	140.3	-0.3	203.9	200.0	3.86	52.815		
1,000.0	994.2	994.2	994.2	2.6	2.1	175.28	140.3	-0.3	223.3	219.0	4.33	51.587		
1,100.0	1,091.7	1,091.7	1,091.7	3.0	2.3	175.68	140.3	-0.3	245.3	240.5	4.80	51.120	SF	
1,200.0	1,188.6	1,188.6	1,188.6	3.5	2.6	176.05	140.3	-0.3	269.9	264.6	5.27	51.208		
1,300.0	1,284.9	1,284.9	1,284.9	4.1	2.8	176.38	140.3	-0.3	296.9	291.2	5.74	51.713		
1,400.0	1,380.4	1,380.4	1,380.4	4.6	3.0	176.69	140.3	-0.3	326.5	320.3	6.22	52.536		
1,419.8	1,399.2	1,399.2	1,399.2	4.7	3.0	176.74	140.3	-0.3	332.7	326.4	6.31	52.731		
1,500.0	1,475.3	1,475.3	1,475.3	5.2	3.2	176.97	140.3	-0.3	357.8	351.2	6.70	53.443		
1,600.0	1,570.3	1,570.3	1,570.3	5.8	3.4	177.21	140.3	-0.3	389.2	382.0	7.18	54.187		
1,700.0	1,665.2	1,667.4	1,667.4	6.5	3.6	177.35	140.1	-0.9	420.4	412.7	7.67	54.828		
1,800.0	1,760.2	1,765.9	1,765.8	7.1	3.8	177.15	139.5	-3.8	450.9	442.8	8.15	55.348		
1,900.0	1,855.1	1,864.7	1,864.5	7.7	4.0	176.68	138.3	-9.2	480.7	472.1	8.63	55.682		
2,000.0	1,950.0	1,963.8	1,963.2	8.3	4.2	175.97	136.6	-17.2	509.9	500.8	9.14	55.808		
2,100.0	2,045.0	2,061.9	2,060.8	9.0	4.4	175.09	134.3	-27.4	538.5	528.8	9.66	55.767		
2,200.0	2,139.9	2,157.4	2,155.7	9.6	4.7	174.25	132.0	-38.1	567.0	556.9	10.19	55.646		
2,300.0	2,234.9	2,252.9	2,250.6	10.2	4.9	173.49	129.7	-48.7	595.7	585.0	10.74	55.486		
2,400.0	2,329.8	2,348.5	2,345.5	10.9	5.1	172.80	127.4	-59.3	624.4	613.1	11.29	55.297		
2,500.0	2,424.8	2,444.0	2,440.4	11.5	5.4	172.17	125.1	-70.0	653.2	641.4	11.86	55.088		
2,600.0	2,519.7	2,539.5	2,535.3	12.1	5.6	171.60	122.7	-80.6	682.1	669.7	12.43	54.866		
2,700.0	2,614.7	2,635.0	2,630.2	12.8	5.9	171.07	120.4	-91.2	711.1	698.0	13.01	54.639		
2,800.0	2,709.6	2,730.6	2,725.1	13.4	6.2	170.58	118.1	-101.8	740.0	726.4	13.60	54.407		
2,900.0	2,804.5	2,826.1	2,820.0	14.0	6.4	170.13	115.8	-112.5	769.1	754.9	14.20	54.174		
3,000.0	2,899.5	2,921.6	2,914.9	14.7	6.7	169.71	113.5	-123.1	798.1	783.4	14.80	53.944		
3,100.0	2,994.4	3,017.1	3,009.8	15.3	7.0	169.32	111.2	-133.7	827.3	811.9	15.40	53.718		
3,200.0	3,089.4	3,112.6	3,104.7	15.9	7.2	168.96	108.8	-144.3	856.4	840.4	16.01	53.497		
3,300.0	3,184.3	3,208.2	3,199.6	16.6	7.5	168.62	106.5	-155.0	885.6	869.0	16.62	53.281		
3,400.0	3,279.3	3,303.7	3,294.5	17.2	7.8	168.30	104.2	-165.6	914.8	897.5	17.24	53.072		
3,500.0	3,374.2	3,399.2	3,389.4	17.9	8.1	168.00	101.9	-176.2	944.0	926.1	17.86	52.869		
3,600.0	3,469.1	3,494.3	3,483.8	18.5	8.3	167.72	99.6	-186.8	973.2	954.8	18.47	52.685		

<b>Company:</b>	Synergy Resources	<b>Local Co-ordinate Reference:</b>	Well SRC Vista 44-2N-C
<b>Project:</b>	SEC.2-T4N-R68W	<b>TVD Reference:</b>	WELL @ 5013.5ft (Ensign 131 RKB - 13.5')
<b>Reference Site:</b>	SRC Vista Pad Sec.2-T4N-R68W	<b>MD Reference:</b>	WELL @ 5013.5ft (Ensign 131 RKB - 13.5')
<b>Site Error:</b>	0.0 ft	<b>North Reference:</b>	True
<b>Reference Well:</b>	SRC Vista 44-2N-C	<b>Survey Calculation Method:</b>	Minimum Curvature
<b>Well Error:</b>	0.0 ft	<b>Output errors are at</b>	2.00 sigma
<b>Reference Wellbore</b>	Wellbore #1	<b>Database:</b>	US_EDM
<b>Reference Design:</b>	Plan #2 (9-21-15)	<b>Offset TVD Reference:</b>	Offset Datum

Offset Design SRC Vista Pad Sec.2-T4N-R68W - SRC Vista 43-2N-A - Wellbore #1 - Plan #2 (9-21-15)													Offset Site Error:	0.0 ft
Survey Program: 0-MWD													Offset Well Error:	0.0 ft
Reference		Offset		Semi Major Axis			Distance							Warning
Measured Depth (ft)	Vertical Depth (ft)	Measured Depth (ft)	Vertical Depth (ft)	Reference (ft)	Offset (ft)	Highside Toolface (°)	Offset Wellbore Centre +N/-S (ft)	+E/-W (ft)	Between Centres (ft)	Between Ellipses (ft)	Minimum Separation (ft)	Separation Factor		
0.0	0.0	0.0	0.0	0.0	0.0	-0.10	159.9	-0.3	159.9					
100.0	100.0	100.0	100.0	0.1	0.1	-0.10	159.9	-0.3	159.9	159.7	0.22	711.547		
200.0	200.0	200.0	200.0	0.3	0.3	-0.10	159.9	-0.3	159.9	159.3	0.67	237.182 CC, ES		
300.0	300.0	300.0	300.0	0.5	0.6	172.71	159.9	-0.3	161.2	160.1	1.11	145.177		
400.0	399.9	399.9	399.9	0.7	0.8	172.88	159.9	-0.3	165.1	163.6	1.55	106.500		
500.0	499.7	499.7	499.7	1.0	1.0	173.14	159.9	-0.3	171.6	169.6	2.00	85.635		
600.0	599.3	599.3	599.3	1.2	1.2	173.47	159.9	-0.3	180.7	178.2	2.46	73.342		
700.0	698.6	698.6	698.6	1.5	1.5	173.85	159.9	-0.3	192.4	189.5	2.93	65.726		
800.0	797.5	797.5	797.5	1.8	1.7	174.25	159.9	-0.3	206.7	203.3	3.39	60.914		
900.0	896.1	896.1	896.1	2.2	1.9	174.66	159.9	-0.3	223.5	219.7	3.86	57.906		
1,000.0	994.2	994.2	994.2	2.6	2.1	175.07	159.9	-0.3	243.0	238.6	4.33	56.125		
1,100.0	1,091.7	1,091.7	1,091.7	3.0	2.3	175.45	159.9	-0.3	264.9	260.1	4.80	55.210		
1,200.0	1,188.6	1,188.6	1,188.6	3.5	2.6	175.81	159.9	-0.3	289.5	284.2	5.27	54.930 SF		
1,300.0	1,284.9	1,284.9	1,284.9	4.1	2.8	176.14	159.9	-0.3	316.6	310.8	5.74	55.125		
1,400.0	1,380.4	1,380.4	1,380.4	4.6	3.0	176.44	159.9	-0.3	346.2	340.0	6.22	55.686		
1,419.8	1,399.2	1,399.2	1,399.2	4.7	3.0	176.50	159.9	-0.3	352.3	346.0	6.31	55.833		
1,500.0	1,475.3	1,475.3	1,475.3	5.2	3.2	176.73	159.9	-0.3	377.5	370.8	6.70	56.365		
1,600.0	1,570.3	1,570.3	1,570.3	5.8	3.4	176.98	159.9	-0.3	408.8	401.6	7.18	56.910		
1,700.0	1,665.2	1,665.2	1,665.2	6.5	3.6	177.20	159.9	-0.3	440.2	432.5	7.67	57.353		
1,800.0	1,760.2	1,760.2	1,760.2	7.1	3.8	177.38	159.9	-0.3	471.5	463.4	8.17	57.719		
1,900.0	1,855.1	1,855.1	1,855.1	7.7	4.1	177.55	159.9	-0.3	502.9	494.2	8.67	58.023		
2,000.0	1,950.0	1,950.0	1,950.0	8.3	4.3	177.69	159.9	-0.3	534.3	525.1	9.17	58.279		
2,100.0	2,045.0	2,045.0	2,045.0	9.0	4.5	177.82	159.9	-0.3	565.6	556.0	9.67	58.497		
2,200.0	2,139.9	2,139.9	2,139.9	9.6	4.7	177.93	159.9	-0.3	597.0	586.8	10.17	58.683		
2,300.0	2,234.9	2,234.9	2,234.9	10.2	4.9	178.04	159.9	-0.3	628.4	617.7	10.68	58.844		
2,400.0	2,329.8	2,329.8	2,329.8	10.9	5.1	178.13	159.9	-0.3	659.8	648.6	11.19	58.983		
2,500.0	2,424.8	2,427.1	2,427.1	11.5	5.3	178.21	159.9	-0.4	691.1	679.4	11.69	59.102		
2,600.0	2,519.7	2,531.7	2,531.6	12.1	5.5	178.14	159.0	-2.4	721.5	709.3	12.20	59.154		
2,700.0	2,614.7	2,637.0	2,636.8	12.8	5.7	177.87	157.0	-7.0	750.7	738.0	12.70	59.127		
2,800.0	2,709.6	2,742.9	2,742.4	13.4	6.0	177.42	153.9	-14.4	778.7	765.5	13.21	58.952		
2,900.0	2,804.5	2,845.7	2,844.7	14.0	6.2	176.85	149.8	-24.0	805.5	791.8	13.73	58.676		
3,000.0	2,899.5	2,941.8	2,940.3	14.7	6.4	176.31	145.7	-33.6	832.1	817.8	14.25	58.404		
3,100.0	2,994.4	3,037.9	3,035.8	15.3	6.6	175.80	141.6	-43.1	858.8	844.0	14.77	58.124		
3,200.0	3,089.4	3,134.0	3,131.4	15.9	6.8	175.32	137.5	-52.6	885.5	870.2	15.31	57.843		
3,300.0	3,184.3	3,230.1	3,226.9	16.6	7.0	174.88	133.4	-62.2	912.3	896.4	15.85	57.554		
3,400.0	3,279.3	3,326.3	3,322.5	17.2	7.3	174.45	129.3	-71.7	939.1	922.7	16.40	57.267		
3,500.0	3,374.2	3,422.4	3,418.0	17.9	7.5	174.05	125.2	-81.2	966.0	949.0	16.95	56.981		
3,600.0	3,469.1	3,515.6	3,510.7	18.5	7.7	173.69	121.3	-90.4	992.9	975.4	17.50	56.737		

<b>Company:</b>	Synergy Resources	<b>Local Co-ordinate Reference:</b>	Well SRC Vista 44-2N-C
<b>Project:</b>	SEC.2-T4N-R68W	<b>TVD Reference:</b>	WELL @ 5013.5ft (Ensign 131 RKB - 13.5')
<b>Reference Site:</b>	SRC Vista Pad Sec.2-T4N-R68W	<b>MD Reference:</b>	WELL @ 5013.5ft (Ensign 131 RKB - 13.5')
<b>Site Error:</b>	0.0 ft	<b>North Reference:</b>	True
<b>Reference Well:</b>	SRC Vista 44-2N-C	<b>Survey Calculation Method:</b>	Minimum Curvature
<b>Well Error:</b>	0.0 ft	<b>Output errors are at</b>	2.00 sigma
<b>Reference Wellbore</b>	Wellbore #1	<b>Database:</b>	US_EDM
<b>Reference Design:</b>	Plan #2 (9-21-15)	<b>Offset TVD Reference:</b>	Offset Datum

Offset Design SRC Vista Pad Sec.2-T4N-R68W - SRC Vista 43-2N-C - Wellbore #1 - Plan #2 (9-21-15)													Offset Site Error:	0.0 ft
Survey Program: 0-MWD													Offset Well Error:	0.0 ft
Reference		Offset		Semi Major Axis			Distance							Warning
Measured Depth (ft)	Vertical Depth (ft)	Measured Depth (ft)	Vertical Depth (ft)	Reference (ft)	Offset (ft)	Highside Toolface (°)	Offset Wellbore Centre +N/-S (ft)	+E/-W (ft)	Between Centres (ft)	Between Ellipses (ft)	Minimum Separation (ft)	Separation Factor		
0.0	0.0	0.0	0.0	0.0	0.0	-0.13	120.2	-0.3	120.2					
100.0	100.0	100.0	100.0	0.1	0.1	-0.13	120.2	-0.3	120.2	120.0	0.22	534.858		
200.0	200.0	200.0	200.0	0.3	0.3	-0.13	120.2	-0.3	120.2	119.5	0.67	178.286 CC, ES		
300.0	300.0	300.0	300.0	0.5	0.6	172.70	120.2	-0.3	121.5	120.4	1.11	109.418		
400.0	399.9	399.9	399.9	0.7	0.8	172.92	120.2	-0.3	125.4	123.9	1.55	80.886		
500.0	499.7	499.7	499.7	1.0	1.0	173.26	120.2	-0.3	131.9	129.9	2.00	65.818		
600.0	599.3	599.3	599.3	1.2	1.2	173.68	120.2	-0.3	141.0	138.5	2.46	57.226		
700.0	698.6	698.6	698.6	1.5	1.5	174.15	120.2	-0.3	152.7	149.8	2.93	52.163		
800.0	797.5	797.5	797.5	1.8	1.7	174.63	120.2	-0.3	167.0	163.6	3.39	49.216		
900.0	896.1	896.1	896.1	2.2	1.9	175.10	120.2	-0.3	183.8	180.0	3.86	47.630		
1,000.0	994.2	994.2	994.2	2.6	2.1	175.55	120.2	-0.3	203.3	199.0	4.33	46.967		
1,100.0	1,091.7	1,091.7	1,091.7	3.0	2.3	175.96	120.2	-0.3	225.3	220.5	4.80	46.955		
1,200.0	1,188.6	1,188.6	1,188.6	3.5	2.6	176.33	120.2	-0.3	249.9	244.6	5.27	47.419		
1,300.0	1,284.9	1,284.9	1,284.9	4.1	2.8	176.67	120.2	-0.3	277.0	271.2	5.74	48.238		
1,400.0	1,380.4	1,380.4	1,380.4	4.6	3.0	176.97	120.2	-0.3	306.6	300.3	6.21	49.329		
1,419.8	1,399.2	1,399.2	1,399.2	4.7	3.0	177.02	120.2	-0.3	312.7	306.4	6.31	49.571		
1,500.0	1,475.3	1,481.6	1,481.6	5.2	3.2	177.19	119.5	-0.8	337.2	330.5	6.69	50.435		
1,600.0	1,570.3	1,585.9	1,585.8	5.8	3.4	177.16	116.4	-2.8	365.6	358.5	7.14	51.185		
1,700.0	1,665.2	1,691.6	1,691.3	6.5	3.6	176.93	110.9	-6.4	391.7	384.1	7.61	51.456		
1,800.0	1,760.2	1,798.6	1,797.9	7.1	3.8	176.52	102.9	-11.7	415.5	407.4	8.10	51.287		
1,900.0	1,855.1	1,899.6	1,898.2	7.7	4.0	176.03	93.4	-17.9	437.4	428.8	8.60	50.886		
2,000.0	1,950.0	1,997.1	1,995.1	8.3	4.2	175.59	84.2	-24.0	459.2	450.1	9.10	50.465		
2,100.0	2,045.0	2,094.6	2,092.0	9.0	4.5	175.20	74.9	-30.1	481.1	471.5	9.61	50.045		
2,200.0	2,139.9	2,192.2	2,188.9	9.6	4.7	174.83	65.7	-36.2	503.0	492.8	10.13	49.636		
2,300.0	2,234.9	2,289.7	2,285.8	10.2	5.0	174.50	56.4	-42.3	524.8	514.2	10.66	49.237		
2,400.0	2,329.8	2,387.2	2,382.7	10.9	5.2	174.19	47.1	-48.4	546.8	535.6	11.19	48.850		
2,500.0	2,424.8	2,484.8	2,479.6	11.5	5.5	173.91	37.9	-54.5	568.7	556.9	11.73	48.479		
2,600.0	2,519.7	2,582.3	2,576.5	12.1	5.7	173.65	28.6	-60.6	590.6	578.3	12.27	48.123		
2,700.0	2,614.7	2,679.8	2,673.4	12.8	6.0	173.41	19.4	-66.7	612.5	599.7	12.82	47.783		
2,800.0	2,709.6	2,777.4	2,770.3	13.4	6.3	173.18	10.1	-72.8	634.5	621.1	13.37	47.458		
2,900.0	2,804.5	2,874.9	2,867.2	14.0	6.6	172.97	0.9	-78.9	656.4	642.5	13.92	47.148		
3,000.0	2,899.5	2,972.4	2,964.1	14.7	6.8	172.77	-8.4	-85.0	678.4	663.9	14.48	46.853		
3,100.0	2,994.4	3,070.0	3,061.0	15.3	7.1	172.59	-17.7	-91.1	700.4	685.3	15.04	46.571		
3,200.0	3,089.4	3,167.5	3,157.9	15.9	7.4	172.42	-26.9	-97.2	722.3	706.7	15.60	46.303		
3,300.0	3,184.3	3,265.0	3,254.8	16.6	7.7	172.25	-36.2	-103.3	744.3	728.2	16.16	46.047		
3,400.0	3,279.3	3,362.6	3,351.7	17.2	8.0	172.10	-45.4	-109.4	766.3	749.6	16.73	45.804		
3,500.0	3,374.2	3,460.1	3,448.6	17.9	8.3	171.95	-54.7	-115.5	788.3	771.0	17.30	45.571		
3,600.0	3,469.1	3,557.6	3,545.5	18.5	8.5	171.82	-63.9	-121.6	810.3	792.4	17.87	45.349		
3,700.0	3,564.1	3,655.1	3,642.4	19.1	8.8	171.69	-73.2	-127.6	832.3	813.9	18.44	45.138		
3,800.0	3,659.0	3,752.7	3,739.3	19.8	9.1	171.56	-82.5	-133.7	854.3	835.3	19.01	44.935		
3,900.0	3,754.0	3,850.2	3,836.2	20.4	9.4	171.45	-91.7	-139.8	876.3	856.7	19.59	44.742		
4,000.0	3,848.9	3,947.7	3,933.1	21.0	9.7	171.33	-101.0	-145.9	898.3	878.2	20.16	44.557		
4,100.0	3,943.9	4,045.3	4,030.0	21.7	10.0	171.23	-110.2	-152.0	920.4	899.6	20.74	44.380		
4,200.0	4,038.8	4,142.8	4,126.9	22.3	10.3	171.13	-119.5	-158.1	942.4	921.1	21.32	44.210		
4,300.0	4,133.8	4,240.3	4,223.8	23.0	10.6	171.03	-128.7	-164.2	964.4	942.5	21.89	44.048		
4,400.0	4,228.7	4,337.9	4,320.7	23.6	10.9	170.94	-138.0	-170.3	986.4	963.9	22.47	43.892 SF		



<b>Company:</b>	Synergy Resources	<b>Local Co-ordinate Reference:</b>	Well SRC Vista 44-2N-C
<b>Project:</b>	SEC.2-T4N-R68W	<b>TVD Reference:</b>	WELL @ 5013.5ft (Ensign 131 RKB - 13.5')
<b>Reference Site:</b>	SRC Vista Pad Sec.2-T4N-R68W	<b>MD Reference:</b>	WELL @ 5013.5ft (Ensign 131 RKB - 13.5')
<b>Site Error:</b>	0.0 ft	<b>North Reference:</b>	True
<b>Reference Well:</b>	SRC Vista 44-2N-C	<b>Survey Calculation Method:</b>	Minimum Curvature
<b>Well Error:</b>	0.0 ft	<b>Output errors are at</b>	2.00 sigma
<b>Reference Wellbore</b>	Wellbore #1	<b>Database:</b>	US_EDM
<b>Reference Design:</b>	Plan #2 (9-21-15)	<b>Offset TVD Reference:</b>	Offset Datum

Offset Design													Offset Site Error:	0.0 ft
Survey Program: 0-MWD													Offset Well Error:	0.0 ft
Reference		Offset		Semi Major Axis			Distance							Warning
Measured Depth (ft)	Vertical Depth (ft)	Measured Depth (ft)	Vertical Depth (ft)	Reference (ft)	Offset (ft)	Highside Toolface (°)	Offset Wellbore Centre +N/-S (ft)	+E/-W (ft)	Between Centres (ft)	Between Ellipses (ft)	Minimum Separation (ft)	Separation Factor		
0.0	0.0	0.0	0.0	0.0	0.0	-0.80	20.0	-0.3	20.0					
100.0	100.0	100.0	100.0	0.1	0.1	-0.80	20.0	-0.3	20.0	19.8	0.22	89.118		
200.0	200.0	200.0	200.0	0.3	0.3	-0.80	20.0	-0.3	20.0	19.4	0.67	29.706 CC, ES		
300.0	300.0	300.0	300.0	0.5	0.6	172.45	20.0	-0.3	21.3	20.2	1.11	19.204		
400.0	399.9	399.9	399.9	0.7	0.8	173.61	20.0	-0.3	25.2	23.7	1.55	16.268		
500.0	499.7	500.5	500.5	1.0	1.0	174.66	18.7	-0.5	30.4	28.5	1.98	15.400		
600.0	599.3	601.2	601.1	1.2	1.2	175.30	14.8	-1.1	35.6	33.2	2.39	14.886		
700.0	698.6	702.1	701.8	1.5	1.4	175.69	8.2	-2.0	40.8	38.0	2.83	14.426		
800.0	797.5	803.1	802.4	1.8	1.6	175.92	-1.0	-3.4	46.0	42.7	3.28	14.021		
900.0	896.1	904.3	902.8	2.2	1.9	176.04	-12.8	-5.2	51.1	47.4	3.74	13.660		
1,000.0	994.2	1,005.5	1,003.0	2.6	2.2	176.07	-27.3	-7.4	56.3	52.0	4.22	13.331		
1,100.0	1,091.7	1,107.0	1,102.9	3.0	2.5	176.04	-44.5	-9.9	61.3	56.6	4.71	13.024		
1,200.0	1,188.6	1,208.5	1,202.5	3.5	2.9	175.96	-64.3	-12.9	66.4	61.2	5.21	12.733		
1,300.0	1,284.9	1,310.2	1,301.6	4.1	3.4	175.85	-86.7	-16.2	71.4	65.7	5.73	12.452		
1,400.0	1,380.4	1,411.7	1,399.9	4.6	3.8	175.71	-111.7	-20.0	76.4	70.1	6.27	12.181		
1,419.8	1,399.2	1,431.5	1,419.0	4.7	3.9	175.68	-116.7	-20.7	77.5	71.2	6.39	12.143		
1,500.0	1,475.3	1,511.6	1,496.4	5.2	4.3	175.62	-137.1	-23.7	82.3	75.5	6.82	12.065		
1,600.0	1,570.3	1,611.4	1,592.9	5.8	4.8	175.55	-162.5	-27.5	88.2	80.8	7.39	11.944		
1,700.0	1,665.2	1,711.2	1,689.3	6.5	5.4	175.48	-187.9	-31.3	94.1	86.2	7.96	11.830		
1,800.0	1,760.2	1,811.0	1,785.8	7.1	5.9	175.43	-213.4	-35.1	100.1	91.5	8.53	11.724		
1,900.0	1,855.1	1,910.8	1,882.2	7.7	6.4	175.38	-238.8	-38.9	106.0	96.9	9.12	11.625		
2,000.0	1,950.0	2,010.7	1,978.7	8.3	6.9	175.33	-264.2	-42.7	111.9	102.2	9.70	11.533		
2,100.0	2,045.0	2,110.5	2,075.2	9.0	7.4	175.29	-289.6	-46.5	117.8	107.5	10.29	11.447		
2,200.0	2,139.9	2,210.3	2,171.6	9.6	8.0	175.26	-315.0	-50.3	123.7	112.9	10.88	11.369		
2,300.0	2,234.9	2,310.1	2,268.1	10.2	8.5	175.23	-340.5	-54.1	129.7	118.2	11.48	11.296		
2,400.0	2,329.8	2,410.0	2,364.5	10.9	9.0	175.20	-365.9	-57.9	135.6	123.5	12.08	11.228		
2,500.0	2,424.8	2,509.8	2,461.0	11.5	9.6	175.17	-391.3	-61.7	141.5	128.8	12.67	11.165		
2,600.0	2,519.7	2,609.6	2,557.5	12.1	10.1	175.14	-416.7	-65.5	147.4	134.2	13.27	11.107		
2,700.0	2,614.7	2,709.4	2,653.9	12.8	10.6	175.12	-442.1	-69.3	153.3	139.5	13.87	11.052		
2,800.0	2,709.6	2,809.3	2,750.4	13.4	11.2	175.10	-467.6	-73.1	159.3	144.8	14.48	11.002		
2,900.0	2,804.5	2,909.1	2,846.8	14.0	11.7	175.08	-493.0	-76.9	165.2	150.1	15.08	10.954		
3,000.0	2,899.5	3,008.9	2,943.3	14.7	12.2	175.06	-518.4	-80.7	171.1	155.4	15.68	10.910		
3,100.0	2,994.4	3,108.7	3,039.7	15.3	12.8	175.04	-543.8	-84.5	177.0	160.7	16.29	10.868		
3,200.0	3,089.4	3,208.6	3,136.2	15.9	13.3	175.03	-569.3	-88.3	183.0	166.1	16.89	10.829		
3,300.0	3,184.3	3,308.4	3,232.7	16.6	13.8	175.01	-594.7	-92.1	188.9	171.4	17.50	10.793		
3,400.0	3,279.3	3,408.2	3,329.1	17.2	14.4	175.00	-620.1	-95.9	194.8	176.7	18.11	10.758		
3,500.0	3,374.2	3,508.0	3,425.6	17.9	14.9	174.98	-645.5	-99.7	200.7	182.0	18.72	10.725		
3,600.0	3,469.1	3,607.9	3,522.0	18.5	15.4	174.97	-670.9	-103.5	206.6	187.3	19.32	10.694		
3,700.0	3,564.1	3,707.7	3,618.5	19.1	16.0	174.96	-696.4	-107.3	212.6	192.6	19.93	10.665		
3,800.0	3,659.0	3,807.5	3,715.0	19.8	16.5	174.95	-721.8	-111.1	218.5	197.9	20.54	10.637		
3,900.0	3,754.0	3,907.3	3,811.4	20.4	17.1	174.94	-747.2	-114.9	224.4	203.3	21.15	10.611		
4,000.0	3,848.9	4,007.2	3,907.9	21.0	17.6	174.93	-772.6	-118.7	230.3	208.6	21.76	10.586		
4,100.0	3,943.9	4,107.0	4,004.3	21.7	18.1	174.92	-798.0	-122.5	236.3	213.9	22.37	10.562		
4,200.0	4,038.8	4,206.8	4,100.8	22.3	18.7	174.91	-823.5	-126.3	242.2	219.2	22.98	10.540		
4,300.0	4,133.8	4,306.6	4,197.3	23.0	19.2	174.90	-848.9	-130.1	248.1	224.5	23.59	10.518		
4,400.0	4,228.7	4,406.5	4,293.7	23.6	19.7	174.89	-874.3	-133.9	254.0	229.8	24.20	10.497		
4,500.0	4,323.6	4,506.3	4,390.2	24.2	20.3	174.88	-899.7	-137.7	259.9	235.1	24.81	10.478		
4,600.0	4,418.6	4,606.1	4,486.6	24.9	20.8	174.88	-925.1	-141.5	265.9	240.4	25.42	10.459		
4,700.0	4,513.5	4,705.9	4,583.1	25.5	21.4	174.87	-950.6	-145.3	271.8	245.8	26.03	10.441		
4,800.0	4,608.5	4,805.8	4,679.5	26.1	21.9	174.86	-976.0	-149.1	277.7	251.1	26.64	10.424		
4,900.0	4,703.4	4,905.6	4,776.0	26.8	22.4	174.86	-1,001.4	-152.9	283.6	256.4	27.25	10.407		
5,000.0	4,798.4	5,005.4	4,872.5	27.4	23.0	174.85	-1,026.8	-156.7	289.5	261.7	27.86	10.391		

CC - Min centre to center distance or convergent point, SF - min separation factor, ES - min ellipse separation



<b>Company:</b>	Synergy Resources	<b>Local Co-ordinate Reference:</b>	Well SRC Vista 44-2N-C
<b>Project:</b>	SEC.2-T4N-R68W	<b>TVD Reference:</b>	WELL @ 5013.5ft (Ensign 131 RKB - 13.5')
<b>Reference Site:</b>	SRC Vista Pad Sec.2-T4N-R68W	<b>MD Reference:</b>	WELL @ 5013.5ft (Ensign 131 RKB - 13.5')
<b>Site Error:</b>	0.0 ft	<b>North Reference:</b>	True
<b>Reference Well:</b>	SRC Vista 44-2N-C	<b>Survey Calculation Method:</b>	Minimum Curvature
<b>Well Error:</b>	0.0 ft	<b>Output errors are at</b>	2.00 sigma
<b>Reference Wellbore</b>	Wellbore #1	<b>Database:</b>	US_EDM
<b>Reference Design:</b>	Plan #2 (9-21-15)	<b>Offset TVD Reference:</b>	Offset Datum

Offset Design													Offset Site Error:	0.0 ft
Survey Program: 0-MWD													Offset Well Error:	0.0 ft
Reference		Offset		Semi Major Axis			Distance							Warning
Measured Depth (ft)	Vertical Depth (ft)	Measured Depth (ft)	Vertical Depth (ft)	Reference (ft)	Offset (ft)	Highside Toolface (°)	Offset Wellbore Centre +N/-S (ft)	+E/-W (ft)	Between Centres (ft)	Between Ellipses (ft)	Minimum Separation (ft)	Separation Factor		
5,100.0	4,893.3	5,105.2	4,968.9	28.1	23.5	174.84	-1,052.2	-160.4	295.5	267.0	28.48	10.376		
5,200.0	4,988.3	5,205.1	5,065.4	28.7	24.1	174.84	-1,077.7	-164.2	301.4	272.3	29.09	10.361		
5,300.0	5,083.2	5,304.9	5,161.8	29.3	24.6	174.83	-1,103.1	-168.0	307.3	277.6	29.70	10.347		
5,318.4	5,100.6	5,323.2	5,179.5	29.4	24.7	174.83	-1,107.8	-168.7	308.4	278.6	29.81	10.345		
5,400.0	5,178.5	5,404.8	5,258.4	29.9	25.1	174.81	-1,128.5	-171.8	312.1	281.8	30.33	10.290		
5,500.0	5,274.8	5,504.7	5,355.0	30.3	25.7	174.73	-1,154.0	-175.6	313.4	282.5	30.90	10.142		
5,600.0	5,371.9	5,604.7	5,451.6	30.6	26.2	174.59	-1,179.4	-179.4	311.3	279.9	31.44	9.903		
5,700.0	5,469.9	5,704.5	5,548.0	30.9	26.7	174.37	-1,204.9	-183.2	305.7	273.8	31.93	9.575		
5,800.0	5,568.5	5,796.2	5,636.9	31.2	27.2	174.12	-1,227.2	-186.6	297.8	265.5	32.33	9.212		
5,900.0	5,667.6	5,886.7	5,725.2	31.4	27.5	173.87	-1,246.5	-189.5	289.5	256.9	32.64	8.870		
6,000.0	5,767.1	5,977.3	5,814.3	31.6	27.7	173.60	-1,263.1	-192.0	280.9	248.0	32.88	8.541		
6,100.0	5,866.9	6,068.2	5,904.1	31.8	28.0	173.32	-1,277.0	-194.0	271.9	238.8	33.07	8.222		
6,200.0	5,966.8	6,159.4	5,994.5	31.9	28.2	173.03	-1,288.0	-195.7	262.7	229.5	33.20	7.912		
6,233.2	6,000.0	6,189.7	6,024.7	31.9	28.2	0.17	-1,291.1	-196.1	259.5	199.7	59.82	4.339		
6,300.0	6,066.8	6,250.8	6,085.6	32.0	28.3	0.00	-1,296.2	-196.9	253.9	193.9	59.96	4.234		
6,400.0	6,166.8	6,342.7	6,177.3	32.0	28.5	-0.18	-1,301.6	-197.7	248.1	187.9	60.15	4.124		
6,417.0	6,183.8	6,358.3	6,192.9	32.1	28.5	-0.20	-1,302.2	-197.8	247.4	187.2	60.18	4.110		
6,450.0	6,216.8	6,388.7	6,223.3	32.1	28.5	-89.98	-1,303.2	-197.9	246.3	212.3	33.99	7.247		
6,500.0	6,266.6	6,434.6	6,269.2	32.1	28.6	-90.95	-1,304.0	-198.1	245.4	211.1	34.33	7.150		
6,521.1	6,287.6	6,454.0	6,288.5	32.1	28.6	-91.55	-1,304.1	-198.1	245.3	210.8	34.52	7.108		
6,550.0	6,316.0	6,481.5	6,316.0	32.1	28.6	-92.60	-1,304.2	-198.1	245.5	210.6	34.85	7.045		
6,600.0	6,364.8	6,530.2	6,364.8	32.2	28.7	-95.02	-1,304.2	-198.1	246.2	210.6	35.62	6.913		
6,650.0	6,412.7	6,578.1	6,412.7	32.2	28.7	-98.05	-1,304.2	-198.1	247.9	211.3	36.62	6.770		
6,700.0	6,459.5	6,624.9	6,459.5	32.2	28.8	-101.53	-1,304.2	-198.1	251.2	213.3	37.81	6.643		
6,750.0	6,504.9	6,670.5	6,505.1	32.2	28.8	-105.31	-1,304.2	-198.1	256.5	217.4	39.05	6.568		
6,800.0	6,548.8	6,721.3	6,555.8	32.2	28.8	-109.56	-1,304.1	-196.2	263.9	223.6	40.30	6.547		
6,850.0	6,590.9	6,774.0	6,608.2	32.2	28.9	-113.61	-1,304.1	-190.4	272.9	231.6	41.22	6.619		
6,900.0	6,631.0	6,828.9	6,662.2	32.2	28.9	-117.43	-1,304.0	-180.4	283.2	241.5	41.73	6.787		
6,950.0	6,668.9	6,886.1	6,717.4	32.2	28.9	-121.00	-1,303.8	-165.5	294.6	252.8	41.80	7.048		
7,000.0	6,704.5	6,945.9	6,773.7	32.3	29.0	-124.31	-1,303.6	-145.3	306.8	265.4	41.46	7.400		
7,050.0	6,737.6	7,008.5	6,830.6	32.3	29.0	-127.36	-1,303.2	-119.2	319.5	278.8	40.74	7.842		
7,100.0	6,767.9	7,074.2	6,887.5	32.3	29.0	-130.15	-1,302.9	-86.6	332.3	292.6	39.72	8.367		
7,150.0	6,795.4	7,143.1	6,943.8	32.4	29.0	-132.66	-1,302.4	-47.0	345.0	306.5	38.49	8.962		
7,200.0	6,819.9	7,215.4	6,998.5	32.4	29.0	-134.90	-1,301.8	0.3	357.2	320.0	37.17	9.609		
7,250.0	6,841.3	7,291.1	7,050.5	32.5	29.1	-136.86	-1,301.2	55.4	368.6	332.6	35.95	10.251		
7,300.0	6,859.5	7,370.3	7,098.2	32.6	29.1	-138.54	-1,300.5	118.5	378.9	344.0	34.90	10.855		
7,350.0	6,874.4	7,452.8	7,140.1	32.8	29.2	-139.92	-1,299.6	189.5	387.7	353.5	34.26	11.316		
7,400.0	6,886.0	7,538.2	7,174.7	32.9	29.4	-140.99	-1,298.7	267.5	394.9	360.7	34.20	11.548		
7,450.0	6,894.1	7,625.9	7,200.3	33.1	29.6	-141.75	-1,297.7	351.3	400.2	365.4	34.83	11.492		
7,500.0	6,898.8	7,715.4	7,215.7	33.4	30.0	-142.19	-1,296.7	439.4	403.4	367.3	36.19	11.148		
7,542.0	6,900.0	7,791.2	7,220.0	33.6	30.5	-142.30	-1,295.8	515.0	404.4	366.6	37.89	10.674		
7,600.0	6,900.0	7,850.5	7,220.0	34.0	31.0	-142.28	-1,295.1	574.4	404.6	365.2	39.34	10.284		
7,700.0	6,900.0	7,950.5	7,220.0	34.8	32.1	-142.25	-1,293.9	674.4	404.7	362.8	41.93	9.653		
7,800.0	6,900.0	8,050.5	7,220.0	35.9	33.4	-142.21	-1,292.8	774.4	404.9	360.3	44.66	9.066		
7,900.0	6,900.0	8,150.5	7,220.0	37.3	35.0	-142.18	-1,291.6	874.3	405.1	357.6	47.52	8.524		
8,000.0	6,900.0	8,250.5	7,220.0	38.9	36.9	-142.15	-1,290.4	974.3	405.3	354.8	50.49	8.027		
8,100.0	6,900.0	8,350.5	7,220.0	40.7	38.9	-142.11	-1,289.3	1,074.3	405.5	351.9	53.54	7.573		
8,200.0	6,900.0	8,450.5	7,220.0	42.6	41.0	-142.08	-1,288.1	1,174.3	405.6	349.0	56.66	7.159		
8,300.0	6,900.0	8,550.5	7,220.0	44.7	43.2	-142.05	-1,286.9	1,274.3	405.8	346.0	59.85	6.780		
8,400.0	6,900.0	8,650.5	7,220.0	46.9	45.6	-142.01	-1,285.7	1,374.3	406.0	342.9	63.10	6.435		
8,500.0	6,900.0	8,750.5	7,220.0	49.2	48.0	-141.98	-1,284.6	1,474.3	406.2	339.8	66.39	6.118		
8,600.0	6,900.0	8,850.5	7,220.0	51.5	50.4	-141.95	-1,283.4	1,574.3	406.4	336.6	69.72	5.829		

CC - Min centre to center distance or convergent point, SF - min separation factor, ES - min ellipse separation

<b>Company:</b>	Synergy Resources	<b>Local Co-ordinate Reference:</b>	Well SRC Vista 44-2N-C
<b>Project:</b>	SEC.2-T4N-R68W	<b>TVD Reference:</b>	WELL @ 5013.5ft (Ensign 131 RKB - 13.5')
<b>Reference Site:</b>	SRC Vista Pad Sec.2-T4N-R68W	<b>MD Reference:</b>	WELL @ 5013.5ft (Ensign 131 RKB - 13.5')
<b>Site Error:</b>	0.0 ft	<b>North Reference:</b>	True
<b>Reference Well:</b>	SRC Vista 44-2N-C	<b>Survey Calculation Method:</b>	Minimum Curvature
<b>Well Error:</b>	0.0 ft	<b>Output errors are at</b>	2.00 sigma
<b>Reference Wellbore</b>	Wellbore #1	<b>Database:</b>	US_EDM
<b>Reference Design:</b>	Plan #2 (9-21-15)	<b>Offset TVD Reference:</b>	Offset Datum

Offset Design													Offset Site Error:	0.0 ft
Survey Program: 0-MWD													Offset Well Error:	0.0 ft
Reference		Offset		Semi Major Axis			Distance							Warning
Measured Depth (ft)	Vertical Depth (ft)	Measured Depth (ft)	Vertical Depth (ft)	Reference (ft)	Offset (ft)	Highside Toolface (°)	Offset Wellbore Centre +N/-S (ft)	+E/-W (ft)	Between Centres (ft)	Between Ellipses (ft)	Minimum Separation (ft)	Separation Factor		
8,700.0	6,900.0	8,950.5	7,220.0	53.9	52.9	-141.92	-1,282.2	1,674.3	406.6	333.5	73.09	5.563		
8,800.0	6,900.0	9,050.5	7,220.0	56.4	55.4	-141.88	-1,281.1	1,774.3	406.7	330.2	76.49	5.318		
8,900.0	6,900.0	9,150.5	7,220.0	58.9	57.9	-141.85	-1,279.9	1,874.3	406.9	327.0	79.92	5.092		
9,000.0	6,900.0	9,250.5	7,220.0	61.4	60.5	-141.82	-1,278.7	1,974.3	407.1	323.7	83.37	4.883		
9,100.0	6,900.0	9,350.5	7,220.0	64.0	63.1	-141.79	-1,277.5	2,074.3	407.3	320.4	86.85	4.690		
9,200.0	6,900.0	9,450.5	7,220.0	66.5	65.7	-141.75	-1,276.4	2,174.3	407.5	317.1	90.35	4.510		
9,300.0	6,900.0	9,550.5	7,220.0	69.1	68.4	-141.72	-1,275.2	2,274.2	407.6	313.8	93.86	4.343		
9,400.0	6,900.0	9,650.5	7,220.0	71.7	71.0	-141.69	-1,274.0	2,374.2	407.8	310.4	97.40	4.187		
9,500.0	6,900.0	9,750.5	7,220.0	74.4	73.7	-141.66	-1,272.9	2,474.2	408.0	307.1	100.95	4.042		
9,600.0	6,900.0	9,850.5	7,220.0	77.0	76.3	-141.62	-1,271.7	2,574.2	408.2	303.7	104.52	3.905		
9,700.0	6,900.0	9,950.5	7,220.0	79.7	79.0	-141.59	-1,270.5	2,674.2	408.4	300.3	108.10	3.778		
9,800.0	6,900.0	10,050.5	7,220.0	82.3	81.7	-141.56	-1,269.3	2,774.2	408.6	296.9	111.69	3.658		
9,900.0	6,900.0	10,150.5	7,220.0	85.0	84.4	-141.53	-1,268.2	2,874.2	408.7	293.4	115.30	3.545		
10,000.0	6,900.0	10,250.5	7,220.0	87.7	87.1	-141.49	-1,267.0	2,974.2	408.9	290.0	118.92	3.439		
10,100.0	6,900.0	10,350.5	7,220.0	90.4	89.8	-141.46	-1,265.8	3,074.2	409.1	286.6	122.54	3.339		
10,200.0	6,900.0	10,450.5	7,220.0	93.1	92.5	-141.43	-1,264.7	3,174.2	409.3	283.1	126.18	3.244		
10,300.0	6,900.0	10,550.5	7,220.0	95.8	95.2	-141.40	-1,263.5	3,274.2	409.5	279.7	129.83	3.154		
10,400.0	6,900.0	10,650.5	7,220.0	98.5	98.0	-141.36	-1,262.3	3,374.2	409.7	276.2	133.49	3.069		
10,500.0	6,900.0	10,750.5	7,220.0	101.2	100.7	-141.33	-1,261.1	3,474.2	409.9	272.7	137.16	2.988		
10,600.0	6,900.0	10,850.5	7,220.0	103.9	103.4	-141.30	-1,260.0	3,574.2	410.0	269.2	140.83	2.912		
10,700.0	6,900.0	10,950.5	7,220.0	106.7	106.1	-141.27	-1,258.8	3,674.1	410.2	265.7	144.52	2.839		
10,800.0	6,900.0	11,050.5	7,220.0	109.4	108.9	-141.23	-1,257.6	3,774.1	410.4	262.2	148.21	2.769		
10,900.0	6,900.0	11,150.5	7,220.0	112.1	111.6	-141.20	-1,256.5	3,874.1	410.6	258.7	151.91	2.703		
11,000.0	6,900.0	11,250.5	7,220.0	114.9	114.4	-141.17	-1,255.3	3,974.1	410.8	255.2	155.61	2.640		
11,100.0	6,900.0	11,350.5	7,220.0	117.6	117.1	-141.14	-1,254.1	4,074.1	411.0	251.6	159.33	2.579		
11,200.0	6,900.0	11,450.5	7,220.0	120.3	119.9	-141.11	-1,252.9	4,174.1	411.1	248.1	163.05	2.522		
11,300.0	6,900.0	11,550.5	7,220.0	123.1	122.6	-141.07	-1,251.8	4,274.1	411.3	244.6	166.78	2.466		
11,400.0	6,900.0	11,650.5	7,220.0	125.8	125.4	-141.04	-1,250.6	4,374.1	411.5	241.0	170.51	2.413		
11,500.0	6,900.0	11,750.5	7,220.0	128.6	128.1	-141.01	-1,249.4	4,474.1	411.7	237.5	174.25	2.363		
11,600.0	6,900.0	11,850.5	7,220.0	131.4	130.9	-140.98	-1,248.3	4,574.1	411.9	233.9	178.00	2.314		
11,615.0	6,900.0	11,865.5	7,220.0	131.8	131.3	-140.97	-1,248.1	4,589.0	411.9	233.4	178.56	2.307 SF		

<b>Company:</b>	Synergy Resources	<b>Local Co-ordinate Reference:</b>	Well SRC Vista 44-2N-C
<b>Project:</b>	SEC.2-T4N-R68W	<b>TVD Reference:</b>	WELL @ 5013.5ft (Ensign 131 RKB - 13.5')
<b>Reference Site:</b>	SRC Vista Pad Sec.2-T4N-R68W	<b>MD Reference:</b>	WELL @ 5013.5ft (Ensign 131 RKB - 13.5')
<b>Site Error:</b>	0.0 ft	<b>North Reference:</b>	True
<b>Reference Well:</b>	SRC Vista 44-2N-C	<b>Survey Calculation Method:</b>	Minimum Curvature
<b>Well Error:</b>	0.0 ft	<b>Output errors are at</b>	2.00 sigma
<b>Reference Wellbore</b>	Wellbore #1	<b>Database:</b>	US_EDM
<b>Reference Design:</b>	Plan #2 (9-21-15)	<b>Offset TVD Reference:</b>	Offset Datum

Offset Design SRC Vista Pad Sec.2-T4N-R68W - SRC Vista 44-2N-A - Wellbore #1 - Plan #2 (9-21-15)													Offset Site Error:	0.0 ft
Survey Program: 0-MWD													Offset Well Error:	0.0 ft
Reference		Offset		Semi Major Axis			Distance							Warning
Measured Depth (ft)	Vertical Depth (ft)	Measured Depth (ft)	Vertical Depth (ft)	Reference (ft)	Offset (ft)	Highside Toolface (°)	Offset Wellbore Centre +N/-S (ft)	+E/-W (ft)	Between Centres (ft)	Between Ellipses (ft)	Minimum Separation (ft)	Separation Factor		
0.0	0.0	0.0	0.0	0.0	0.0	0.00	40.1	0.0	40.1					
100.0	100.0	100.0	100.0	0.1	0.1	0.00	40.1	0.0	40.1	39.8	0.22	178.237		
200.0	200.0	200.0	200.0	0.3	0.3	0.00	40.1	0.0	40.1	39.4	0.67	59.412 CC, ES		
300.0	300.0	300.0	300.0	0.5	0.6	172.98	40.1	0.0	41.4	40.2	1.11	37.242		
400.0	399.9	399.9	399.9	0.7	0.8	173.58	40.1	0.0	45.3	43.7	1.55	29.190		
500.0	499.7	499.7	499.7	1.0	1.0	174.38	40.1	0.0	51.8	49.8	2.00	25.828		
600.0	599.3	599.3	599.3	1.2	1.2	175.22	40.1	0.0	60.9	58.4	2.46	24.708		
700.0	698.6	700.4	700.4	1.5	1.4	175.86	38.8	-0.2	71.3	68.4	2.90	24.595		
800.0	797.5	801.9	801.8	1.8	1.6	176.25	34.8	-0.9	81.7	78.4	3.32	24.626		
900.0	896.1	903.7	903.4	2.2	1.8	176.47	28.2	-2.1	92.1	88.4	3.75	24.538		
1,000.0	994.2	1,005.7	1,005.0	2.6	2.0	176.57	18.9	-3.8	102.5	98.3	4.20	24.375		
1,100.0	1,091.7	1,108.1	1,106.6	3.0	2.3	176.58	6.8	-5.9	112.8	108.1	4.67	24.162		
1,200.0	1,188.6	1,210.7	1,208.1	3.5	2.6	176.52	-7.9	-8.5	123.0	117.9	5.15	23.910		
1,300.0	1,284.9	1,313.6	1,309.4	4.1	2.9	176.41	-25.4	-11.6	133.2	127.6	5.64	23.627		
1,400.0	1,380.4	1,416.8	1,410.6	4.6	3.3	176.27	-45.6	-15.2	143.3	137.2	6.15	23.316		
1,419.8	1,399.2	1,437.2	1,430.6	4.7	3.4	176.23	-49.9	-15.9	145.3	139.1	6.25	23.250		
1,500.0	1,475.3	1,520.4	1,511.5	5.2	3.7	176.07	-68.6	-19.2	152.5	145.9	6.68	22.832		
1,600.0	1,570.3	1,622.7	1,610.6	5.8	4.2	175.79	-93.8	-23.7	159.3	152.1	7.24	22.017		
1,700.0	1,665.2	1,722.5	1,707.1	6.5	4.7	175.52	-118.8	-28.1	165.6	157.8	7.79	21.254		
1,800.0	1,760.2	1,822.3	1,803.6	7.1	5.2	175.27	-143.8	-32.5	171.9	163.5	8.36	20.556		
1,900.0	1,855.1	1,922.1	1,900.1	7.7	5.6	175.04	-168.9	-37.0	178.1	169.2	8.94	19.932		
2,000.0	1,950.0	2,021.9	1,996.6	8.3	6.2	174.82	-193.9	-41.4	184.4	174.9	9.52	19.371		
2,100.0	2,045.0	2,121.7	2,093.1	9.0	6.7	174.62	-219.0	-45.8	190.7	180.6	10.11	18.865		
2,200.0	2,139.9	2,221.5	2,189.6	9.6	7.2	174.43	-244.0	-50.3	197.0	186.3	10.70	18.407		
2,300.0	2,234.9	2,321.3	2,286.1	10.2	7.7	174.25	-269.0	-54.7	203.3	192.0	11.30	17.991		
2,400.0	2,329.8	2,421.1	2,382.6	10.9	8.2	174.08	-294.1	-59.1	209.6	197.7	11.90	17.612		
2,500.0	2,424.8	2,520.9	2,479.1	11.5	8.7	173.92	-319.1	-63.6	215.8	203.3	12.50	17.265		
2,600.0	2,519.7	2,620.7	2,575.6	12.1	9.2	173.77	-344.2	-68.0	222.1	209.0	13.11	16.946		
2,700.0	2,614.7	2,720.5	2,672.1	12.8	9.8	173.63	-369.2	-72.4	228.4	214.7	13.72	16.653		
2,800.0	2,709.6	2,820.3	2,768.6	13.4	10.3	173.50	-394.3	-76.8	234.7	220.4	14.33	16.383		
2,900.0	2,804.5	2,920.1	2,865.1	14.0	10.8	173.37	-419.3	-81.3	241.0	226.1	14.94	16.132		
3,000.0	2,899.5	3,019.9	2,961.6	14.7	11.3	173.25	-444.3	-85.7	247.3	231.8	15.55	15.900		
3,100.0	2,994.4	3,119.7	3,058.2	15.3	11.9	173.14	-469.4	-90.1	253.6	237.4	16.17	15.683		
3,200.0	3,089.4	3,219.5	3,154.7	15.9	12.4	173.03	-494.4	-94.6	259.9	243.1	16.79	15.482		
3,300.0	3,184.3	3,319.3	3,251.2	16.6	12.9	172.93	-519.5	-99.0	266.2	248.8	17.41	15.293		
3,400.0	3,279.3	3,419.1	3,347.7	17.2	13.5	172.83	-544.5	-103.4	272.5	254.5	18.03	15.116		
3,500.0	3,374.2	3,518.9	3,444.2	17.9	14.0	172.73	-569.5	-107.9	278.8	260.2	18.65	14.951		
3,600.0	3,469.1	3,618.7	3,540.7	18.5	14.5	172.64	-594.6	-112.3	285.1	265.8	19.27	14.795		
3,700.0	3,564.1	3,718.5	3,637.2	19.1	15.0	172.56	-619.6	-116.7	291.4	271.5	19.89	14.648		
3,800.0	3,659.0	3,818.3	3,733.7	19.8	15.6	172.48	-644.7	-121.1	297.7	277.2	20.52	14.510		
3,900.0	3,754.0	3,918.1	3,830.2	20.4	16.1	172.40	-669.7	-125.6	304.0	282.9	21.14	14.379		
4,000.0	3,848.9	4,017.9	3,926.7	21.0	16.6	172.32	-694.7	-130.0	310.3	288.6	21.77	14.255		
4,100.0	3,943.9	4,117.7	4,023.2	21.7	17.2	172.25	-719.8	-134.4	316.6	294.2	22.40	14.138		
4,200.0	4,038.8	4,217.5	4,119.7	22.3	17.7	172.18	-744.8	-138.9	322.9	299.9	23.02	14.027		
4,300.0	4,133.8	4,317.3	4,216.2	23.0	18.2	172.11	-769.9	-143.3	329.2	305.6	23.65	13.921		
4,400.0	4,228.7	4,417.1	4,312.7	23.6	18.8	172.05	-794.9	-147.7	335.5	311.3	24.28	13.820		
4,500.0	4,323.6	4,516.9	4,409.2	24.2	19.3	171.98	-820.0	-152.2	341.8	316.9	24.91	13.724		
4,600.0	4,418.6	4,616.7	4,505.7	24.9	19.8	171.92	-845.0	-156.6	348.2	322.6	25.54	13.633		
4,700.0	4,513.5	4,716.5	4,602.3	25.5	20.4	171.87	-870.0	-161.0	354.5	328.3	26.17	13.546		
4,800.0	4,608.5	4,816.3	4,698.8	26.1	20.9	171.81	-895.1	-165.4	360.8	334.0	26.80	13.463		
4,900.0	4,703.4	4,916.1	4,795.3	26.8	21.4	171.76	-920.1	-169.9	367.1	339.6	27.43	13.383		
5,000.0	4,798.4	5,015.9	4,891.8	27.4	22.0	171.70	-945.2	-174.3	373.4	345.3	28.06	13.307		

CC - Min centre to center distance or convergent point, SF - min separation factor, ES - min ellipse separation

<b>Company:</b>	Synergy Resources	<b>Local Co-ordinate Reference:</b>	Well SRC Vista 44-2N-C
<b>Project:</b>	SEC.2-T4N-R68W	<b>TVD Reference:</b>	WELL @ 5013.5ft (Ensign 131 RKB - 13.5')
<b>Reference Site:</b>	SRC Vista Pad Sec.2-T4N-R68W	<b>MD Reference:</b>	WELL @ 5013.5ft (Ensign 131 RKB - 13.5')
<b>Site Error:</b>	0.0 ft	<b>North Reference:</b>	True
<b>Reference Well:</b>	SRC Vista 44-2N-C	<b>Survey Calculation Method:</b>	Minimum Curvature
<b>Well Error:</b>	0.0 ft	<b>Output errors are at</b>	2.00 sigma
<b>Reference Wellbore</b>	Wellbore #1	<b>Database:</b>	US_EDM
<b>Reference Design:</b>	Plan #2 (9-21-15)	<b>Offset TVD Reference:</b>	Offset Datum

Offset Design													Offset Site Error:	0.0 ft
Survey Program: 0-MWD													Offset Well Error:	0.0 ft
Reference		Offset		Semi Major Axis			Distance						Warning	
Measured Depth (ft)	Vertical Depth (ft)	Measured Depth (ft)	Vertical Depth (ft)	Reference (ft)	Offset (ft)	Highside Toolface (°)	Offset Wellbore Centre +N/-S (ft)	+E/-W (ft)	Between Centres (ft)	Between Ellipses (ft)	Minimum Separation (ft)	Separation Factor		
5,100.0	4,893.3	5,115.7	4,988.3	28.1	22.5	171.65	-970.2	-178.7	379.7	351.0	28.69	13.233		
5,200.0	4,988.3	5,213.5	5,082.9	28.7	23.0	171.61	-994.7	-183.1	386.0	356.7	29.31	13.171		
5,300.0	5,083.2	5,300.0	5,166.9	29.3	23.3	171.62	-1,014.7	-186.6	394.4	364.5	29.85	13.212		
5,318.4	5,100.6	5,317.5	5,184.0	29.4	23.4	171.63	-1,018.5	-187.3	396.2	366.3	29.95	13.230		
5,400.0	5,178.5	5,388.9	5,254.0	29.9	23.6	171.70	-1,032.7	-189.8	404.5	374.1	30.38	13.314		
5,500.0	5,274.8	5,476.2	5,339.9	30.3	23.8	171.80	-1,047.8	-192.5	414.3	383.4	30.84	13.434		
5,600.0	5,371.9	5,563.3	5,426.0	30.6	24.1	171.90	-1,060.2	-194.7	423.6	392.4	31.23	13.562		
5,700.0	5,469.9	5,650.1	5,512.3	30.9	24.2	172.00	-1,070.0	-196.4	432.4	400.9	31.57	13.699		
5,800.0	5,568.5	5,736.8	5,598.7	31.2	24.4	172.11	-1,077.3	-197.7	440.8	408.9	31.83	13.846		
5,900.0	5,667.6	5,823.3	5,685.0	31.4	24.5	172.22	-1,081.9	-198.5	448.6	416.6	32.04	14.003		
6,000.0	5,767.1	5,909.6	5,771.3	31.6	24.6	172.34	-1,084.0	-198.9	456.0	423.8	32.18	14.169		
6,100.0	5,866.9	6,005.2	5,866.9	31.8	24.7	172.45	-1,084.1	-198.9	462.2	429.9	32.29	14.314		
6,200.0	5,966.8	6,105.1	5,966.8	31.9	24.8	172.51	-1,084.1	-198.9	465.1	432.7	32.35	14.376		
6,233.2	6,000.0	6,138.3	6,000.0	31.9	24.9	-0.25	-1,084.1	-198.9	465.3	408.9	56.38	8.253		
6,300.0	6,066.8	6,205.1	6,066.8	32.0	24.9	-0.25	-1,084.1	-198.9	465.3	408.8	56.49	8.236		
6,400.0	6,166.8	6,305.1	6,166.8	32.0	25.0	-0.25	-1,084.1	-198.9	465.3	408.6	56.66	8.212		
6,417.0	6,183.8	6,322.1	6,183.8	32.1	25.0	-0.25	-1,084.1	-198.9	465.3	408.6	56.69	8.208		
6,450.0	6,216.8	6,354.9	6,216.6	32.1	25.1	-89.74	-1,084.1	-198.1	465.3	432.3	33.00	14.098		
6,500.0	6,266.6	6,404.7	6,266.2	32.1	25.1	-89.75	-1,084.1	-194.1	465.3	432.2	33.12	14.047		
6,550.0	6,316.0	6,454.5	6,315.4	32.1	25.1	-89.75	-1,084.0	-186.7	465.3	432.1	33.22	14.008		
6,600.0	6,364.8	6,504.2	6,364.0	32.2	25.2	-89.75	-1,083.9	-175.9	465.3	432.0	33.29	13.978		
6,650.0	6,412.7	6,554.0	6,411.7	32.2	25.2	-89.76	-1,083.7	-161.7	465.4	432.0	33.34	13.957		
6,700.0	6,459.5	6,603.8	6,458.3	32.2	25.2	-89.76	-1,083.5	-144.2	465.4	432.0	33.39	13.940		
6,750.0	6,504.9	6,653.6	6,503.6	32.2	25.2	-89.77	-1,083.3	-123.6	465.5	432.1	33.43	13.924		
6,800.0	6,548.8	6,703.4	6,547.3	32.2	25.2	-89.78	-1,083.0	-99.8	465.6	432.1	33.48	13.904		
6,850.0	6,590.9	6,753.2	6,589.3	32.2	25.2	-89.79	-1,082.7	-73.1	465.6	432.1	33.56	13.873		
6,900.0	6,631.0	6,803.0	6,629.3	32.2	25.3	-89.80	-1,082.3	-43.5	465.7	432.0	33.69	13.824		
6,950.0	6,668.9	6,852.8	6,667.2	32.2	25.3	-89.81	-1,081.9	-11.1	465.8	431.9	33.88	13.750		
7,000.0	6,704.5	6,902.6	6,702.8	32.3	25.3	-89.82	-1,081.5	23.7	465.9	431.8	34.15	13.643		
7,050.0	6,737.6	6,952.4	6,735.9	32.3	25.3	-89.84	-1,081.1	61.0	466.0	431.5	34.53	13.495		
7,100.0	6,767.9	7,002.3	6,766.3	32.3	25.4	-89.85	-1,080.6	100.5	466.1	431.1	35.04	13.303		
7,150.0	6,795.4	7,052.2	6,793.8	32.4	25.4	-89.87	-1,080.1	142.0	466.3	430.6	35.69	13.064		
7,200.0	6,819.9	7,102.0	6,818.5	32.4	25.5	-89.88	-1,079.6	185.4	466.4	429.9	36.50	12.778		
7,250.0	6,841.3	7,151.9	6,840.0	32.5	25.6	-89.90	-1,079.1	230.4	466.5	429.1	37.47	12.450		
7,300.0	6,859.5	7,201.9	6,858.4	32.6	25.7	-89.91	-1,078.6	276.8	466.7	428.1	38.61	12.086		
7,350.0	6,874.4	7,251.8	6,873.5	32.8	25.9	-89.93	-1,078.0	324.3	466.8	426.9	39.92	11.695		
7,400.0	6,886.0	7,301.7	6,885.3	32.9	26.1	-89.95	-1,077.4	372.9	467.0	425.6	41.37	11.287		
7,450.0	6,894.1	7,351.7	6,893.7	33.1	26.4	-89.97	-1,076.9	422.1	467.1	424.1	42.97	10.872		
7,500.0	6,898.8	7,401.7	6,898.6	33.4	26.8	-89.98	-1,076.3	471.8	467.2	422.6	44.68	10.458		
7,542.0	6,900.0	7,443.6	6,900.0	33.6	27.2	-90.00	-1,075.8	513.8	467.4	421.2	46.20	10.117		
7,600.0	6,900.0	7,501.7	6,900.0	34.0	27.8	-90.00	-1,075.1	571.8	467.5	419.2	48.39	9.662		
7,700.0	6,900.0	7,601.7	6,900.0	34.8	29.2	-90.00	-1,073.9	671.8	467.8	415.4	52.43	8.922		
7,800.0	6,900.0	7,701.6	6,900.0	35.9	30.9	-90.00	-1,072.8	771.8	468.1	411.4	56.74	8.250		
7,900.0	6,900.0	7,801.6	6,900.0	37.3	32.8	-90.00	-1,071.6	871.8	468.4	407.2	61.27	7.646		
8,000.0	6,900.0	7,901.6	6,900.0	38.9	34.9	-90.00	-1,070.4	971.8	468.7	402.8	65.95	7.107		
8,100.0	6,900.0	8,001.6	6,900.0	40.7	37.1	-90.00	-1,069.2	1,071.8	469.0	398.2	70.78	6.627		
8,200.0	6,900.0	8,101.6	6,900.0	42.6	39.4	-90.00	-1,068.1	1,171.7	469.3	393.6	75.71	6.199		
8,300.0	6,900.0	8,201.6	6,900.0	44.7	41.8	-90.00	-1,066.9	1,271.7	469.6	388.9	80.73	5.817		
8,400.0	6,900.0	8,301.6	6,900.0	46.9	44.2	-90.00	-1,065.7	1,371.7	469.9	384.1	85.82	5.475		
8,500.0	6,900.0	8,401.6	6,900.0	49.2	46.7	-90.00	-1,064.6	1,471.7	470.2	379.2	90.97	5.169		
8,600.0	6,900.0	8,501.6	6,900.0	51.5	49.2	-90.00	-1,063.4	1,571.7	470.5	374.3	96.18	4.892		
8,700.0	6,900.0	8,601.6	6,900.0	53.9	51.8	-90.00	-1,062.2	1,671.7	470.8	369.4	101.43	4.642		

CC - Min centre to center distance or convergent point, SF - min separation factor, ES - min ellipse separation

<b>Company:</b>	Synergy Resources	<b>Local Co-ordinate Reference:</b>	Well SRC Vista 44-2N-C
<b>Project:</b>	SEC.2-T4N-R68W	<b>TVD Reference:</b>	WELL @ 5013.5ft (Ensign 131 RKB - 13.5')
<b>Reference Site:</b>	SRC Vista Pad Sec.2-T4N-R68W	<b>MD Reference:</b>	WELL @ 5013.5ft (Ensign 131 RKB - 13.5')
<b>Site Error:</b>	0.0 ft	<b>North Reference:</b>	True
<b>Reference Well:</b>	SRC Vista 44-2N-C	<b>Survey Calculation Method:</b>	Minimum Curvature
<b>Well Error:</b>	0.0 ft	<b>Output errors are at</b>	2.00 sigma
<b>Reference Wellbore</b>	Wellbore #1	<b>Database:</b>	US_EDM
<b>Reference Design:</b>	Plan #2 (9-21-15)	<b>Offset TVD Reference:</b>	Offset Datum

Offset Design SRC Vista Pad Sec.2-T4N-R68W - SRC Vista 44-2N-A - Wellbore #1 - Plan #2 (9-21-15)													Offset Site Error:	0.0 ft
Survey Program: 0-MWD													Offset Well Error:	0.0 ft
Reference		Offset		Semi Major Axis			Distance							Warning
Measured Depth	Vertical Depth	Measured Depth	Vertical Depth	Reference	Offset	Highside Toolface	Offset Wellbore Centre		Between Centres	Between Ellipses	Minimum Separation	Separation Factor		
(ft)	(ft)	(ft)	(ft)	(ft)	(ft)	(°)	+N/-S (ft)	+E/-W (ft)	(ft)	(ft)	(ft)			
8,800.0	6,900.0	8,701.6	6,900.0	56.4	54.4	-90.00	-1,061.0	1,771.7	471.1	364.4	106.71	4.415		
8,900.0	6,900.0	8,801.6	6,900.0	58.9	57.0	-90.00	-1,059.9	1,871.7	471.4	359.4	112.03	4.208		
9,000.0	6,900.0	8,901.6	6,900.0	61.4	59.6	-90.00	-1,058.7	1,971.7	471.7	354.3	117.37	4.019		
9,100.0	6,900.0	9,001.6	6,900.0	64.0	62.2	-90.00	-1,057.5	2,071.7	472.0	349.2	122.74	3.845		
9,200.0	6,900.0	9,101.6	6,900.0	66.5	64.9	-90.00	-1,056.4	2,171.7	472.3	344.1	128.13	3.686		
9,300.0	6,900.0	9,201.6	6,900.0	69.1	67.6	-90.00	-1,055.2	2,271.7	472.6	339.0	133.54	3.539		
9,400.0	6,900.0	9,301.6	6,900.0	71.7	70.2	-90.00	-1,054.0	2,371.7	472.9	333.9	138.96	3.403		
9,500.0	6,900.0	9,401.6	6,900.0	74.4	72.9	-90.00	-1,052.8	2,471.7	473.2	328.8	144.40	3.277		
9,600.0	6,900.0	9,501.6	6,900.0	77.0	75.6	-90.00	-1,051.7	2,571.6	473.5	323.6	149.85	3.160		
9,700.0	6,900.0	9,601.6	6,900.0	79.7	78.3	-90.00	-1,050.5	2,671.6	473.8	318.4	155.31	3.050		
9,800.0	6,900.0	9,701.6	6,900.0	82.3	81.0	-90.00	-1,049.3	2,771.6	474.0	313.3	160.78	2.948		
9,900.0	6,900.0	9,801.6	6,900.0	85.0	83.7	-90.00	-1,048.2	2,871.6	474.3	308.1	166.26	2.853		
10,000.0	6,900.0	9,901.6	6,900.0	87.7	86.5	-90.00	-1,047.0	2,971.6	474.6	302.9	171.75	2.764		
10,100.0	6,900.0	10,001.6	6,900.0	90.4	89.2	-90.00	-1,045.8	3,071.6	474.9	297.7	177.25	2.679		
10,200.0	6,900.0	10,101.6	6,900.0	93.1	91.9	-90.00	-1,044.6	3,171.6	475.2	292.5	182.75	2.600		
10,300.0	6,900.0	10,201.6	6,900.0	95.8	94.7	-90.00	-1,043.5	3,271.6	475.5	287.3	188.26	2.526		
10,400.0	6,900.0	10,301.6	6,900.0	98.5	97.4	-90.00	-1,042.3	3,371.6	475.8	282.0	193.78	2.455		
10,500.0	6,900.0	10,401.6	6,900.0	101.2	100.1	-90.00	-1,041.1	3,471.6	476.1	276.8	199.30	2.389		
10,600.0	6,900.0	10,501.6	6,900.0	103.9	102.9	-90.00	-1,040.0	3,571.6	476.4	271.6	204.83	2.326		
10,700.0	6,900.0	10,601.6	6,900.0	106.7	105.6	-90.00	-1,038.8	3,671.6	476.7	266.4	210.36	2.266		
10,800.0	6,900.0	10,701.6	6,900.0	109.4	108.4	-90.00	-1,037.6	3,771.6	477.0	261.1	215.89	2.209		
10,900.0	6,900.0	10,801.6	6,900.0	112.1	111.2	-90.00	-1,036.4	3,871.5	477.3	255.9	221.43	2.156		
11,000.0	6,900.0	10,901.6	6,900.0	114.9	113.9	-90.00	-1,035.3	3,971.5	477.6	250.6	226.97	2.104		
11,100.0	6,900.0	11,001.6	6,900.0	117.6	116.7	-90.00	-1,034.1	4,071.5	477.9	245.4	232.52	2.055		
11,200.0	6,900.0	11,101.6	6,900.0	120.3	119.4	-90.00	-1,032.9	4,171.5	478.2	240.1	238.07	2.009		
11,300.0	6,900.0	11,201.6	6,900.0	123.1	122.2	-90.00	-1,031.7	4,271.5	478.5	234.9	243.62	1.964		
11,400.0	6,900.0	11,301.6	6,900.0	125.8	125.0	-90.00	-1,030.6	4,371.5	478.8	229.6	249.17	1.921		
11,500.0	6,900.0	11,401.6	6,900.0	128.6	127.7	-90.00	-1,029.4	4,471.5	479.1	224.3	254.73	1.881		
11,600.0	6,900.0	11,501.6	6,900.0	131.4	130.5	-90.00	-1,028.2	4,571.5	479.4	219.1	260.29	1.842		
11,615.0	6,900.0	11,516.6	6,900.0	131.8	130.9	-90.00	-1,028.1	4,586.5	479.4	218.3	261.12	1.836 SF		

<b>Company:</b>	Synergy Resources	<b>Local Co-ordinate Reference:</b>	Well SRC Vista 44-2N-C
<b>Project:</b>	SEC.2-T4N-R68W	<b>TVD Reference:</b>	WELL @ 5013.5ft (Ensign 131 RKB - 13.5')
<b>Reference Site:</b>	SRC Vista Pad Sec.2-T4N-R68W	<b>MD Reference:</b>	WELL @ 5013.5ft (Ensign 131 RKB - 13.5')
<b>Site Error:</b>	0.0 ft	<b>North Reference:</b>	True
<b>Reference Well:</b>	SRC Vista 44-2N-C	<b>Survey Calculation Method:</b>	Minimum Curvature
<b>Well Error:</b>	0.0 ft	<b>Output errors are at</b>	2.00 sigma
<b>Reference Wellbore</b>	Wellbore #1	<b>Database:</b>	US_EDM
<b>Reference Design:</b>	Plan #2 (9-21-15)	<b>Offset TVD Reference:</b>	Offset Datum

Offset Design													Offset Site Error:	0.0 ft
Survey Program: 0-MWD													Offset Well Error:	0.0 ft
Reference		Offset		Semi Major Axis			Distance							Warning
Measured Depth (ft)	Vertical Depth (ft)	Measured Depth (ft)	Vertical Depth (ft)	Reference (ft)	Offset (ft)	Highside Toolface (°)	Offset Wellbore Centre +N/-S (ft)	+E/-W (ft)	Between Centres (ft)	Between Ellipses (ft)	Minimum Separation (ft)	Separation Factor		
0.0	0.0	0.0	0.0	0.0	0.0	0.01	80.1	0.0	80.1					
100.0	100.0	100.0	100.0	0.1	0.1	0.01	80.1	0.0	80.1	79.9	0.22	356.565		
200.0	200.0	200.0	200.0	0.3	0.3	0.01	80.1	0.0	80.1	79.5	0.67	118.855 CC, ES		
300.0	300.0	300.0	300.0	0.5	0.6	172.87	80.1	0.0	81.4	80.3	1.11	73.333		
400.0	399.9	399.9	399.9	0.7	0.8	173.19	80.1	0.0	85.3	83.8	1.55	55.040		
500.0	499.7	499.7	499.7	1.0	1.0	173.66	80.1	0.0	91.8	89.8	2.00	45.824		
600.0	599.3	599.3	599.3	1.2	1.2	174.22	80.1	0.0	100.9	98.5	2.46	40.967		
700.0	698.6	698.6	698.6	1.5	1.5	174.81	80.1	0.0	112.6	109.7	2.93	38.483		
800.0	797.5	797.5	797.5	1.8	1.7	175.38	80.1	0.0	126.9	123.5	3.39	37.420		
900.0	896.1	896.1	896.1	2.2	1.9	175.90	80.1	0.0	143.8	140.0	3.86	37.269		
1,000.0	994.2	994.2	994.2	2.6	2.1	176.37	80.1	0.0	163.3	159.0	4.33	37.735		
1,100.0	1,091.7	1,096.2	1,096.2	3.0	2.3	176.72	79.0	-0.3	184.2	179.4	4.78	38.564		
1,200.0	1,188.6	1,199.2	1,199.1	3.5	2.5	176.88	75.2	-1.5	205.1	199.9	5.20	39.408		
1,300.0	1,284.9	1,302.7	1,302.3	4.1	2.7	176.89	68.6	-3.4	226.0	220.3	5.65	40.021		
1,400.0	1,380.4	1,406.8	1,406.0	4.6	2.9	176.79	59.4	-6.1	246.8	240.7	6.10	40.440		
1,419.8	1,399.2	1,427.4	1,426.5	4.7	3.0	176.76	57.2	-6.7	250.9	244.7	6.20	40.499		
1,500.0	1,475.3	1,511.6	1,510.1	5.2	3.2	176.60	47.3	-9.6	266.8	260.2	6.58	40.529		
1,600.0	1,570.3	1,617.6	1,614.9	5.8	3.4	176.32	32.3	-14.0	284.1	277.0	7.08	40.117		
1,700.0	1,665.2	1,720.5	1,716.3	6.5	3.7	175.97	15.4	-19.0	299.1	291.5	7.59	39.384		
1,800.0	1,760.2	1,819.4	1,813.6	7.1	4.0	175.65	-1.2	-23.9	313.8	305.6	8.12	38.654		
1,900.0	1,855.1	1,918.3	1,911.0	7.7	4.4	175.36	-17.8	-28.7	328.4	319.8	8.64	38.001		
2,000.0	1,950.0	2,017.2	2,008.4	8.3	4.7	175.10	-34.4	-33.6	343.1	333.9	9.18	37.366		
2,100.0	2,045.0	2,116.1	2,105.8	9.0	5.0	174.85	-51.1	-38.5	357.8	348.1	9.73	36.785		
2,200.0	2,139.9	2,215.0	2,203.1	9.6	5.4	174.63	-67.7	-43.4	372.5	362.2	10.28	36.247		
2,300.0	2,234.9	2,313.9	2,300.5	10.2	5.7	174.42	-84.3	-48.2	387.2	376.3	10.83	35.747		
2,400.0	2,329.8	2,412.8	2,397.9	10.9	6.1	174.23	-100.9	-53.1	401.9	390.5	11.39	35.284		
2,500.0	2,424.8	2,511.7	2,495.3	11.5	6.5	174.05	-117.6	-58.0	416.5	404.6	11.95	34.853		
2,600.0	2,519.7	2,610.6	2,592.7	12.1	6.9	173.88	-134.2	-62.9	431.3	418.7	12.52	34.453		
2,700.0	2,614.7	2,709.5	2,690.0	12.8	7.2	173.73	-150.8	-67.7	446.0	432.9	13.09	34.079		
2,800.0	2,709.6	2,808.4	2,787.4	13.4	7.6	173.58	-167.4	-72.6	460.7	447.0	13.66	33.731		
2,900.0	2,804.5	2,907.3	2,884.8	14.0	8.0	173.44	-184.0	-77.5	475.4	461.1	14.23	33.405		
3,000.0	2,899.5	3,006.2	2,982.2	14.7	8.4	173.32	-200.7	-82.4	490.1	475.3	14.81	33.100		
3,100.0	2,994.4	3,105.2	3,079.5	15.3	8.8	173.20	-217.3	-87.3	504.8	489.4	15.38	32.813		
3,200.0	3,089.4	3,204.1	3,176.9	15.9	9.1	173.08	-233.9	-92.1	519.5	503.6	15.96	32.545		
3,300.0	3,184.3	3,303.0	3,274.3	16.6	9.5	172.97	-250.5	-97.0	534.2	517.7	16.54	32.291		
3,400.0	3,279.3	3,401.9	3,371.7	17.2	9.9	172.87	-267.1	-101.9	549.0	531.8	17.13	32.053		
3,500.0	3,374.2	3,500.8	3,469.0	17.9	10.3	172.77	-283.8	-106.8	563.7	546.0	17.71	31.828		
3,600.0	3,469.1	3,599.7	3,566.4	18.5	10.7	172.68	-300.4	-111.6	578.4	560.1	18.30	31.616		
3,700.0	3,564.1	3,698.6	3,663.8	19.1	11.1	172.59	-317.0	-116.5	593.1	574.3	18.88	31.414		
3,800.0	3,659.0	3,797.5	3,761.2	19.8	11.5	172.51	-333.6	-121.4	607.9	588.4	19.47	31.224		
3,900.0	3,754.0	3,896.4	3,858.6	20.4	11.9	172.43	-350.3	-126.3	622.6	602.5	20.06	31.043		
4,000.0	3,848.9	3,995.3	3,955.9	21.0	12.3	172.36	-366.9	-131.1	637.3	616.7	20.64	30.871		
4,100.0	3,943.9	4,094.2	4,053.3	21.7	12.7	172.29	-383.5	-136.0	652.1	630.8	21.23	30.708		
4,200.0	4,038.8	4,193.1	4,150.7	22.3	13.0	172.22	-400.1	-140.9	666.8	645.0	21.82	30.552		
4,300.0	4,133.8	4,292.0	4,248.1	23.0	13.4	172.15	-416.7	-145.8	681.5	659.1	22.42	30.404		
4,400.0	4,228.7	4,390.9	4,345.4	23.6	13.8	172.09	-433.4	-150.6	696.3	673.2	23.01	30.263		
4,500.0	4,323.6	4,489.8	4,442.8	24.2	14.2	172.03	-450.0	-155.5	711.0	687.4	23.60	30.128		
4,600.0	4,418.6	4,588.7	4,540.2	24.9	14.6	171.97	-466.6	-160.4	725.7	701.5	24.19	29.998		
4,700.0	4,513.5	4,687.6	4,637.6	25.5	15.0	171.91	-483.2	-165.3	740.5	715.7	24.79	29.875		
4,800.0	4,608.5	4,786.6	4,734.9	26.1	15.4	171.86	-499.9	-170.1	755.2	729.8	25.38	29.757		
4,900.0	4,703.4	4,885.5	4,832.3	26.8	15.8	171.81	-516.5	-175.0	769.9	744.0	25.97	29.643		
5,000.0	4,798.4	4,984.4	4,929.7	27.4	16.2	171.76	-533.1	-179.9	784.7	758.1	26.57	29.534		

CC - Min centre to center distance or convergent point, SF - min separation factor, ES - min ellipse separation



<b>Company:</b>	Synergy Resources	<b>Local Co-ordinate Reference:</b>	Well SRC Vista 44-2N-C
<b>Project:</b>	SEC.2-T4N-R68W	<b>TVD Reference:</b>	WELL @ 5013.5ft (Ensign 131 RKB - 13.5')
<b>Reference Site:</b>	SRC Vista Pad Sec.2-T4N-R68W	<b>MD Reference:</b>	WELL @ 5013.5ft (Ensign 131 RKB - 13.5')
<b>Site Error:</b>	0.0 ft	<b>North Reference:</b>	True
<b>Reference Well:</b>	SRC Vista 44-2N-C	<b>Survey Calculation Method:</b>	Minimum Curvature
<b>Well Error:</b>	0.0 ft	<b>Output errors are at</b>	2.00 sigma
<b>Reference Wellbore</b>	Wellbore #1	<b>Database:</b>	US_EDM
<b>Reference Design:</b>	Plan #2 (9-21-15)	<b>Offset TVD Reference:</b>	Offset Datum

Offset Design		SRC Vista Pad Sec.2-T4N-R68W - SRC Vista D-2C - Wellbore #1 - Plan #2 (9-21-15)											Offset Site Error:		0.0 ft
Survey Program: 0-MWD													Offset Well Error:		0.0 ft
Reference		Offset		Semi Major Axis			Distance							Warning	
Measured Depth	Vertical Depth	Measured Depth	Vertical Depth	Reference	Offset	Highside Toolface	Offset Wellbore Centre		Between Centres	Between Ellipses	Minimum Separation	Separation Factor			
(ft)	(ft)	(ft)	(ft)	(ft)	(ft)	(°)	+N/-S (ft)	+E/-W (ft)	(ft)	(ft)	(ft)				
5,100.0	4,893.3	5,083.3	5,027.1	28.1	16.6	171.71	-549.7	-184.8	799.4	772.2	27.16	29.430			
5,200.0	4,988.3	5,176.5	5,118.9	28.7	17.0	171.67	-565.3	-189.3	814.2	786.5	27.74	29.355			
5,300.0	5,083.2	5,253.9	5,195.3	29.3	17.2	171.67	-576.8	-192.7	830.9	802.7	28.24	29.428			
5,318.4	5,100.6	5,268.0	5,209.3	29.4	17.2	171.67	-578.7	-193.3	834.3	806.0	28.33	29.454			
5,400.0	5,178.5	5,330.7	5,271.5	29.9	17.4	171.74	-586.2	-195.5	849.0	820.3	28.75	29.530			
5,500.0	5,274.8	5,400.0	5,340.5	30.3	17.5	171.83	-593.1	-197.5	866.4	837.2	29.19	29.679			
5,600.0	5,371.9	5,483.6	5,423.8	30.6	17.7	171.94	-599.2	-199.3	882.7	853.1	29.60	29.824			
5,700.0	5,469.9	5,559.8	5,499.9	30.9	17.8	172.06	-602.7	-200.3	898.2	868.3	29.93	30.006			
5,800.0	5,568.5	5,635.7	5,575.8	31.2	17.9	172.18	-604.3	-200.8	912.8	882.6	30.22	30.205			
5,900.0	5,667.6	5,727.5	5,667.6	31.4	18.1	172.31	-604.4	-200.8	925.9	895.4	30.48	30.379			
6,000.0	5,767.1	5,827.0	5,767.1	31.6	18.2	172.42	-604.4	-200.8	935.6	905.0	30.69	30.483			
6,100.0	5,866.9	5,926.8	5,866.9	31.8	18.3	172.49	-604.4	-200.8	942.0	911.1	30.87	30.514			
6,200.0	5,966.8	6,026.7	5,966.8	31.9	18.4	172.52	-604.4	-200.8	944.9	913.9	31.00	30.477			
6,233.2	6,000.0	6,059.9	6,000.0	31.9	18.5	-0.24	-604.4	-200.8	945.1	895.2	49.89	18.944			
6,300.0	6,066.8	6,126.7	6,066.8	32.0	18.6	-0.24	-604.4	-200.8	945.1	895.0	50.03	18.889			
6,400.0	6,166.8	6,226.7	6,166.8	32.0	18.7	-0.24	-604.4	-200.8	945.1	894.8	50.23	18.813			
6,417.0	6,183.8	6,243.7	6,183.8	32.1	18.7	-0.24	-604.4	-200.8	945.1	894.8	50.27	18.800 SF			
6,450.0	6,216.8	6,276.7	6,216.8	32.1	18.8	-89.78	-604.4	-200.8	945.0	913.3	31.73	29.783			
6,496.3	6,262.9	6,322.8	6,262.9	32.1	18.8	-90.00	-604.4	-200.8	945.0	913.1	31.90	29.625			
6,500.0	6,266.6	6,326.5	6,266.6	32.1	18.8	-90.03	-604.4	-200.8	945.0	913.1	31.92	29.611			
6,550.0	6,316.0	6,375.9	6,316.0	32.1	18.9	-90.47	-604.4	-200.8	945.1	913.0	32.12	29.421			
6,600.0	6,364.8	6,424.7	6,364.8	32.2	19.0	-91.11	-604.4	-200.8	945.2	912.9	32.35	29.216			
6,650.0	6,412.7	6,472.6	6,412.7	32.2	19.0	-91.91	-604.4	-200.8	945.6	913.0	32.60	29.003			
6,700.0	6,459.5	6,519.4	6,459.5	32.2	19.1	-92.84	-604.4	-200.8	946.4	913.5	32.87	28.793			
6,750.0	6,504.9	6,565.0	6,505.1	32.2	19.1	-93.88	-604.4	-200.8	947.8	914.6	33.14	28.596			
6,800.0	6,548.8	6,615.3	6,555.4	32.2	19.2	-95.08	-604.3	-198.9	949.7	916.3	33.43	28.407			
6,850.0	6,590.9	6,667.6	6,607.3	32.2	19.3	-96.28	-604.3	-193.3	952.2	918.5	33.69	28.261			
6,900.0	6,631.0	6,721.9	6,660.7	32.2	19.3	-97.47	-604.2	-183.4	955.1	921.2	33.92	28.158			
6,950.0	6,668.9	6,778.5	6,715.4	32.2	19.4	-98.66	-604.0	-168.8	958.6	924.4	34.12	28.094			
7,000.0	6,704.5	6,837.7	6,771.1	32.3	19.4	-99.84	-603.7	-149.0	962.4	928.1	34.30	28.057			
7,050.0	6,737.6	6,899.6	6,827.5	32.3	19.4	-101.01	-603.5	-123.5	966.5	932.0	34.48	28.030			
7,100.0	6,767.9	6,964.4	6,884.0	32.3	19.4	-102.15	-603.1	-91.6	970.9	936.2	34.69	27.990			
7,150.0	6,795.4	7,032.5	6,939.9	32.4	19.5	-103.26	-602.6	-52.8	975.4	940.4	34.95	27.904			
7,200.0	6,819.9	7,104.0	6,994.3	32.4	19.5	-104.32	-602.1	-6.5	979.8	944.5	35.33	27.731			
7,250.0	6,841.3	7,178.9	7,046.1	32.5	19.5	-105.32	-601.4	47.6	984.2	948.3	35.89	27.419			
7,300.0	6,859.5	7,257.3	7,093.9	32.6	19.6	-106.24	-600.7	109.6	988.3	951.6	36.71	26.918			
7,350.0	6,874.4	7,339.0	7,136.3	32.8	19.8	-107.05	-599.9	179.4	991.9	954.1	37.86	26.203			
7,400.0	6,886.0	7,423.7	7,171.5	32.9	20.1	-107.72	-599.0	256.3	995.0	955.7	39.38	25.265			
7,450.0	6,894.1	7,510.9	7,198.0	33.1	20.7	-108.22	-598.0	339.4	997.4	956.1	41.31	24.144			
7,500.0	6,898.8	7,600.0	7,214.5	33.4	21.8	-108.55	-597.0	426.9	999.0	955.4	43.62	22.901			
7,542.0	6,900.0	7,675.7	7,219.9	33.6	23.1	-108.66	-596.1	502.4	999.7	953.9	45.83	21.815			
7,600.0	6,900.0	7,739.5	7,220.0	34.0	24.3	-108.66	-595.4	566.2	999.9	951.9	48.04	20.814			

<b>Company:</b>	Synergy Resources	<b>Local Co-ordinate Reference:</b>	Well SRC Vista 44-2N-C
<b>Project:</b>	SEC.2-T4N-R68W	<b>TVD Reference:</b>	WELL @ 5013.5ft (Ensign 131 RKB - 13.5')
<b>Reference Site:</b>	SRC Vista Pad Sec.2-T4N-R68W	<b>MD Reference:</b>	WELL @ 5013.5ft (Ensign 131 RKB - 13.5')
<b>Site Error:</b>	0.0 ft	<b>North Reference:</b>	True
<b>Reference Well:</b>	SRC Vista 44-2N-C	<b>Survey Calculation Method:</b>	Minimum Curvature
<b>Well Error:</b>	0.0 ft	<b>Output errors are at</b>	2.00 sigma
<b>Reference Wellbore</b>	Wellbore #1	<b>Database:</b>	US_EDM
<b>Reference Design:</b>	Plan #2 (9-21-15)	<b>Offset TVD Reference:</b>	Offset Datum

Offset Design SRC Vista Pad Sec.2-T4N-R68W - SRC Vista D-2N-A - Wellbore #1 - Plan #2 (9-21-15)													Offset Site Error:	0.0 ft
Survey Program: 0-MWD													Offset Well Error:	0.0 ft
Reference		Offset		Semi Major Axis			Distance							Warning
Measured Depth (ft)	Vertical Depth (ft)	Measured Depth (ft)	Vertical Depth (ft)	Reference (ft)	Offset (ft)	Highside Toolface (°)	Offset Wellbore Centre +N/-S (ft)	+E/-W (ft)	Between Centres (ft)	Between Ellipses (ft)	Minimum Separation (ft)	Separation Factor		
0.0	0.0	0.0	0.0	0.0	0.0	-0.16	100.2	-0.3	100.2					
100.0	100.0	100.0	100.0	0.1	0.1	-0.16	100.2	-0.3	100.2	100.0	0.22	445.713		
200.0	200.0	200.0	200.0	0.3	0.3	-0.16	100.2	-0.3	100.2	99.5	0.67	148.571 CC, ES		
300.0	300.0	300.0	300.0	0.5	0.6	172.69	100.2	-0.3	101.5	100.4	1.11	91.376		
400.0	399.9	399.9	399.9	0.7	0.8	172.96	100.2	-0.3	105.4	103.8	1.55	67.963		
500.0	499.7	499.7	499.7	1.0	1.0	173.35	100.2	-0.3	111.9	109.9	2.00	55.820		
600.0	599.3	599.3	599.3	1.2	1.2	173.84	100.2	-0.3	121.0	118.5	2.46	49.095		
700.0	698.6	698.6	698.6	1.5	1.5	174.37	100.2	-0.3	132.7	129.7	2.93	45.321		
800.0	797.5	797.5	797.5	1.8	1.7	174.90	100.2	-0.3	146.9	143.5	3.39	43.315		
900.0	896.1	896.1	896.1	2.2	1.9	175.40	100.2	-0.3	163.8	160.0	3.86	42.446		
1,000.0	994.2	994.2	994.2	2.6	2.1	175.87	100.2	-0.3	183.3	178.9	4.33	42.348		
1,100.0	1,091.7	1,091.7	1,091.7	3.0	2.3	176.29	100.2	-0.3	205.3	200.5	4.80	42.792		
1,200.0	1,188.6	1,188.6	1,188.6	3.5	2.6	176.67	100.2	-0.3	229.9	224.6	5.27	43.631		
1,300.0	1,284.9	1,290.7	1,290.7	4.1	2.8	176.95	99.2	-0.6	256.0	250.3	5.72	44.715		
1,400.0	1,380.4	1,394.3	1,394.2	4.6	2.9	177.07	95.5	-1.9	282.1	276.0	6.16	45.801		
1,419.8	1,399.2	1,414.9	1,414.8	4.7	3.0	177.08	94.5	-2.2	287.3	281.1	6.25	45.987		
1,500.0	1,475.3	1,498.9	1,498.6	5.2	3.1	177.06	89.1	-4.1	307.5	300.8	6.61	46.493		
1,600.0	1,570.3	1,604.8	1,604.1	5.8	3.4	176.93	79.9	-7.3	330.2	323.2	7.09	46.599		
1,700.0	1,665.2	1,712.0	1,710.5	6.5	3.6	176.69	67.8	-11.4	350.4	342.8	7.58	46.227		
1,800.0	1,760.2	1,820.3	1,817.5	7.1	3.9	176.35	52.7	-16.6	367.9	359.8	8.09	45.478		
1,900.0	1,855.1	1,919.2	1,915.2	7.7	4.1	176.00	37.5	-21.9	383.9	375.3	8.60	44.636		
2,000.0	1,950.0	2,017.9	2,012.6	8.3	4.4	175.69	22.3	-27.1	400.0	390.9	9.12	43.842		
2,100.0	2,045.0	2,116.6	2,109.9	9.0	4.7	175.40	7.1	-32.3	416.1	406.4	9.65	43.119		
2,200.0	2,139.9	2,215.3	2,207.3	9.6	5.0	175.13	-8.0	-37.5	432.2	422.0	10.19	42.431		
2,300.0	2,234.9	2,314.0	2,304.7	10.2	5.3	174.88	-23.2	-42.7	448.3	437.5	10.73	41.791		
2,400.0	2,329.8	2,412.6	2,402.0	10.9	5.7	174.65	-38.4	-48.0	464.4	453.1	11.27	41.194		
2,500.0	2,424.8	2,511.3	2,499.4	11.5	6.0	174.43	-53.5	-53.2	480.5	468.7	11.82	40.636		
2,600.0	2,519.7	2,610.0	2,596.8	12.1	6.3	174.23	-68.7	-58.4	496.6	484.2	12.38	40.116		
2,700.0	2,614.7	2,708.7	2,694.1	12.8	6.7	174.04	-83.9	-63.6	512.7	499.8	12.94	39.629		
2,800.0	2,709.6	2,807.3	2,791.5	13.4	7.0	173.86	-99.0	-68.8	528.9	515.4	13.50	39.174		
2,900.0	2,804.5	2,906.0	2,888.9	14.0	7.4	173.69	-114.2	-74.1	545.0	530.9	14.07	38.747		
3,000.0	2,899.5	3,004.7	2,986.2	14.7	7.7	173.54	-129.3	-79.3	561.2	546.5	14.63	38.347		
3,100.0	2,994.4	3,103.4	3,083.6	15.3	8.1	173.39	-144.5	-84.5	577.3	562.1	15.20	37.970		
3,200.0	3,089.4	3,202.1	3,181.0	15.9	8.5	173.25	-159.7	-89.7	593.4	577.7	15.78	37.616		
3,300.0	3,184.3	3,300.7	3,278.3	16.6	8.8	173.11	-174.8	-94.9	609.6	593.2	16.35	37.282		
3,400.0	3,279.3	3,399.4	3,375.7	17.2	9.2	172.99	-190.0	-100.2	625.8	608.8	16.93	36.967		
3,500.0	3,374.2	3,498.1	3,473.1	17.9	9.5	172.87	-205.2	-105.4	641.9	624.4	17.51	36.670		
3,600.0	3,469.1	3,596.8	3,570.4	18.5	9.9	172.75	-220.3	-110.6	658.1	640.0	18.08	36.388		
3,700.0	3,564.1	3,695.4	3,667.8	19.1	10.3	172.64	-235.5	-115.8	674.2	655.6	18.67	36.122		
3,800.0	3,659.0	3,794.1	3,765.2	19.8	10.6	172.54	-250.7	-121.0	690.4	671.2	19.25	35.869		
3,900.0	3,754.0	3,892.8	3,862.5	20.4	11.0	172.44	-265.8	-126.2	706.6	686.7	19.83	35.629		
4,000.0	3,848.9	3,991.5	3,959.9	21.0	11.4	172.35	-281.0	-131.5	722.7	702.3	20.42	35.400		
4,100.0	3,943.9	4,090.1	4,057.2	21.7	11.7	172.26	-296.2	-136.7	738.9	717.9	21.00	35.183		
4,200.0	4,038.8	4,188.8	4,154.6	22.3	12.1	172.17	-311.3	-141.9	755.1	733.5	21.59	34.976		
4,300.0	4,133.8	4,287.5	4,252.0	23.0	12.5	172.09	-326.5	-147.1	771.3	749.1	22.18	34.779		
4,400.0	4,228.7	4,386.2	4,349.3	23.6	12.9	172.01	-341.6	-152.3	787.4	764.7	22.76	34.591		
4,500.0	4,323.6	4,484.9	4,446.7	24.2	13.2	171.93	-356.8	-157.6	803.6	780.3	23.35	34.411		
4,600.0	4,418.6	4,583.5	4,544.1	24.9	13.6	171.86	-372.0	-162.8	819.8	795.8	23.94	34.239		
4,700.0	4,513.5	4,682.2	4,641.4	25.5	14.0	171.79	-387.1	-168.0	836.0	811.4	24.53	34.074		
4,800.0	4,608.5	4,780.9	4,738.8	26.1	14.3	171.72	-402.3	-173.2	852.1	827.0	25.12	33.916		
4,900.0	4,703.4	4,879.6	4,836.2	26.8	14.7	171.65	-417.5	-178.4	868.3	842.6	25.72	33.765		
5,000.0	4,798.4	4,978.2	4,933.5	27.4	15.1	171.59	-432.6	-183.7	884.5	858.2	26.31	33.620		

CC - Min centre to center distance or convergent point, SF - min separation factor, ES - min ellipse separation



<b>Company:</b>	Synergy Resources	<b>Local Co-ordinate Reference:</b>	Well SRC Vista 44-2N-C
<b>Project:</b>	SEC.2-T4N-R68W	<b>TVD Reference:</b>	WELL @ 5013.5ft (Ensign 131 RKB - 13.5')
<b>Reference Site:</b>	SRC Vista Pad Sec.2-T4N-R68W	<b>MD Reference:</b>	WELL @ 5013.5ft (Ensign 131 RKB - 13.5')
<b>Site Error:</b>	0.0 ft	<b>North Reference:</b>	True
<b>Reference Well:</b>	SRC Vista 44-2N-C	<b>Survey Calculation Method:</b>	Minimum Curvature
<b>Well Error:</b>	0.0 ft	<b>Output errors are at</b>	2.00 sigma
<b>Reference Wellbore</b>	Wellbore #1	<b>Database:</b>	US_EDM
<b>Reference Design:</b>	Plan #2 (9-21-15)	<b>Offset TVD Reference:</b>	Offset Datum

<b>Offset Design</b>												<b>Offset Site Error:</b>	0.0 ft
SRC Vista Pad Sec.2-T4N-R68W - SRC Vista D-2N-A - Wellbore #1 - Plan #2 (9-21-15)												<b>Offset Well Error:</b>	0.0 ft
Survey Program: 0-MWD													
Reference		Offset		Semi Major Axis			Distance						
Measured Depth (ft)	Vertical Depth (ft)	Measured Depth (ft)	Vertical Depth (ft)	Reference (ft)	Offset (ft)	Highside Toolface (°)	Offset Wellbore Centre +N/-S (ft)	+E/-W (ft)	Between Centres (ft)	Between Ellipses (ft)	Minimum Separation (ft)	Separation Factor	Warning
5,100.0	4,893.3	5,076.9	5,030.9	28.1	15.5	171.53	-447.8	-188.9	900.7	873.8	26.90	33.480 SF	
5,200.0	4,988.3	5,153.2	5,106.4	28.7	15.7	171.51	-458.6	-192.6	918.1	890.7	27.40	33.503	
5,300.0	5,083.2	5,228.4	5,180.9	29.3	15.9	171.52	-467.4	-195.6	937.9	910.0	27.88	33.634	
5,318.4	5,100.6	5,242.1	5,194.5	29.4	15.9	171.53	-468.8	-196.1	941.7	913.8	27.97	33.669	
5,400.0	5,178.5	5,300.0	5,252.2	29.9	16.0	171.62	-474.1	-197.9	958.9	930.5	28.39	33.780	
5,500.0	5,274.8	5,377.2	5,329.2	30.3	16.2	171.75	-479.4	-199.7	979.1	950.2	28.84	33.954	
5,600.0	5,371.9	5,451.3	5,403.2	30.6	16.3	171.89	-482.6	-200.9	998.2	969.0	29.22	34.159	

<b>Company:</b>	Synergy Resources	<b>Local Co-ordinate Reference:</b>	Well SRC Vista 44-2N-C
<b>Project:</b>	SEC.2-T4N-R68W	<b>TVD Reference:</b>	WELL @ 5013.5ft (Ensign 131 RKB - 13.5')
<b>Reference Site:</b>	SRC Vista Pad Sec.2-T4N-R68W	<b>MD Reference:</b>	WELL @ 5013.5ft (Ensign 131 RKB - 13.5')
<b>Site Error:</b>	0.0 ft	<b>North Reference:</b>	True
<b>Reference Well:</b>	SRC Vista 44-2N-C	<b>Survey Calculation Method:</b>	Minimum Curvature
<b>Well Error:</b>	0.0 ft	<b>Output errors are at</b>	2.00 sigma
<b>Reference Wellbore</b>	Wellbore #1	<b>Database:</b>	US_EDM
<b>Reference Design:</b>	Plan #2 (9-21-15)	<b>Offset TVD Reference:</b>	Offset Datum

Offset Design SRC Vista Pad Sec.2-T4N-R68W - SRC Vista D-2N-C - Wellbore #1 - Plan #2 (9-21-15)													Offset Site Error:	0.0 ft
Survey Program: 0-MWD													Offset Well Error:	0.0 ft
Reference		Offset		Semi Major Axis			Distance							Warning
Measured Depth (ft)	Vertical Depth (ft)	Measured Depth (ft)	Vertical Depth (ft)	Reference (ft)	Offset (ft)	Highside Toolface (°)	Offset Wellbore Centre +N/-S (ft)	+E/-W (ft)	Between Centres (ft)	Between Ellipses (ft)	Minimum Separation (ft)	Separation Factor		
0.0	0.0	0.0	0.0	0.0	0.0	-0.27	60.1	-0.3	60.1					
100.0	100.0	100.0	100.0	0.1	0.1	-0.27	60.1	-0.3	60.1	59.9	0.22	267.459		
200.0	200.0	200.0	200.0	0.3	0.3	-0.27	60.1	-0.3	60.1	59.4	0.67	89.153 CC, ES		
300.0	300.0	300.0	300.0	0.5	0.6	172.65	60.1	-0.3	61.4	60.3	1.11	55.299		
400.0	399.9	399.9	399.9	0.7	0.8	173.08	60.1	-0.3	65.3	63.8	1.55	42.122		
500.0	499.7	499.7	499.7	1.0	1.0	173.70	60.1	-0.3	71.8	69.8	2.00	35.830		
600.0	599.3	599.3	599.3	1.2	1.2	174.40	60.1	-0.3	80.9	78.4	2.46	32.838		
700.0	698.6	698.6	698.6	1.5	1.5	175.09	60.1	-0.3	92.6	89.7	2.93	31.642		
800.0	797.5	797.5	797.5	1.8	1.7	175.73	60.1	-0.3	106.9	103.5	3.39	31.520		
900.0	896.1	899.2	899.2	2.2	1.9	176.22	58.9	-0.6	122.6	118.7	3.83	31.970		
1,000.0	994.2	1,001.4	1,001.4	2.6	2.1	176.47	54.9	-1.5	138.2	134.0	4.26	32.472		
1,100.0	1,091.7	1,104.1	1,103.8	3.0	2.3	176.56	48.3	-3.1	153.9	149.2	4.69	32.773		
1,200.0	1,188.6	1,207.2	1,206.4	3.5	2.5	176.53	39.0	-5.3	169.4	164.3	5.15	32.920		
1,300.0	1,284.9	1,310.7	1,309.2	4.1	2.7	176.41	26.9	-8.1	185.0	179.3	5.61	32.946		
1,400.0	1,380.4	1,414.7	1,412.0	4.6	3.0	176.22	12.1	-11.6	200.4	194.3	6.10	32.873		
1,419.8	1,399.2	1,435.3	1,432.4	4.7	3.1	176.18	8.8	-12.4	203.5	197.3	6.19	32.845		
1,500.0	1,475.3	1,519.2	1,515.0	5.2	3.3	175.98	-5.6	-15.8	215.0	208.4	6.60	32.556		
1,600.0	1,570.3	1,621.7	1,615.5	5.8	3.7	175.66	-25.3	-20.4	227.2	220.0	7.13	31.875		
1,700.0	1,665.2	1,721.0	1,712.7	6.5	4.0	175.36	-44.9	-25.1	239.0	231.3	7.66	31.184		
1,800.0	1,760.2	1,820.3	1,810.0	7.1	4.4	175.09	-64.4	-29.7	250.8	242.6	8.20	30.577		
1,900.0	1,855.1	1,919.6	1,907.2	7.7	4.8	174.85	-84.0	-34.3	262.5	253.8	8.75	30.000		
2,000.0	1,950.0	2,018.9	2,004.4	8.3	5.2	174.62	-103.5	-38.9	274.4	265.0	9.31	29.473		
2,100.0	2,045.0	2,118.2	2,101.7	9.0	5.6	174.42	-123.0	-43.5	286.2	276.3	9.87	28.990		
2,200.0	2,139.9	2,217.5	2,198.9	9.6	6.0	174.23	-142.6	-48.1	298.0	287.5	10.44	28.546		
2,300.0	2,234.9	2,316.8	2,296.2	10.2	6.5	174.05	-162.1	-52.7	309.8	298.8	11.01	28.137		
2,400.0	2,329.8	2,416.1	2,393.4	10.9	6.9	173.89	-181.7	-57.3	321.6	310.0	11.58	27.761		
2,500.0	2,424.8	2,515.4	2,490.7	11.5	7.3	173.74	-201.2	-62.0	333.4	321.2	12.16	27.413		
2,600.0	2,519.7	2,614.7	2,587.9	12.1	7.7	173.60	-220.7	-66.6	345.2	332.5	12.74	27.091		
2,700.0	2,614.7	2,714.0	2,685.2	12.8	8.2	173.47	-240.3	-71.2	357.0	343.7	13.33	26.792		
2,800.0	2,709.6	2,813.3	2,782.4	13.4	8.6	173.35	-259.8	-75.8	368.9	355.0	13.91	26.514		
2,900.0	2,804.5	2,912.6	2,879.6	14.0	9.0	173.23	-279.4	-80.4	380.7	366.2	14.50	26.256		
3,000.0	2,899.5	3,011.9	2,976.9	14.7	9.4	173.13	-298.9	-85.0	392.5	377.4	15.09	26.014		
3,100.0	2,994.4	3,111.2	3,074.1	15.3	9.9	173.02	-318.4	-89.6	404.3	388.7	15.68	25.788		
3,200.0	3,089.4	3,210.5	3,171.4	15.9	10.3	172.93	-338.0	-94.2	416.2	399.9	16.27	25.577		
3,300.0	3,184.3	3,309.8	3,268.6	16.6	10.8	172.84	-357.5	-98.8	428.0	411.1	16.86	25.378		
3,400.0	3,279.3	3,409.1	3,365.9	17.2	11.2	172.75	-377.1	-103.5	439.8	422.4	17.46	25.191		
3,500.0	3,374.2	3,508.4	3,463.1	17.9	11.6	172.67	-396.6	-108.1	451.7	433.6	18.05	25.016		
3,600.0	3,469.1	3,607.7	3,560.4	18.5	12.1	172.59	-416.1	-112.7	463.5	444.8	18.65	24.850		
3,700.0	3,564.1	3,706.9	3,657.6	19.1	12.5	172.52	-435.7	-117.3	475.3	456.1	19.25	24.693		
3,800.0	3,659.0	3,806.2	3,754.9	19.8	12.9	172.45	-455.2	-121.9	487.2	467.3	19.85	24.545		
3,900.0	3,754.0	3,905.5	3,852.1	20.4	13.4	172.39	-474.8	-126.5	499.0	478.5	20.45	24.404		
4,000.0	3,848.9	4,004.8	3,949.3	21.0	13.8	172.32	-494.3	-131.1	510.8	489.8	21.05	24.271		
4,100.0	3,943.9	4,104.1	4,046.6	21.7	14.3	172.26	-513.9	-135.7	522.7	501.0	21.65	24.144		
4,200.0	4,038.8	4,203.4	4,143.8	22.3	14.7	172.20	-533.4	-140.4	534.5	512.2	22.25	24.024		
4,300.0	4,133.8	4,302.7	4,241.1	23.0	15.1	172.15	-552.9	-145.0	546.3	523.5	22.85	23.909		
4,400.0	4,228.7	4,402.0	4,338.3	23.6	15.6	172.10	-572.5	-149.6	558.2	534.7	23.45	23.800		
4,500.0	4,323.6	4,501.3	4,435.6	24.2	16.0	172.05	-592.0	-154.2	570.0	545.9	24.05	23.696		
4,600.0	4,418.6	4,600.6	4,532.8	24.9	16.5	172.00	-611.6	-158.8	581.8	557.2	24.66	23.596		
4,700.0	4,513.5	4,699.9	4,630.1	25.5	16.9	171.95	-631.1	-163.4	593.7	568.4	25.26	23.501		
4,800.0	4,608.5	4,799.2	4,727.3	26.1	17.3	171.91	-650.6	-168.0	605.5	579.6	25.87	23.410		
4,900.0	4,703.4	4,898.5	4,824.5	26.8	17.8	171.86	-670.2	-172.6	617.3	590.9	26.47	23.323		
5,000.0	4,798.4	4,997.8	4,921.8	27.4	18.2	171.82	-689.7	-177.3	629.2	602.1	27.07	23.239		

CC - Min centre to center distance or convergent point, SF - min separation factor, ES - min ellipse separation

<b>Company:</b>	Synergy Resources	<b>Local Co-ordinate Reference:</b>	Well SRC Vista 44-2N-C
<b>Project:</b>	SEC.2-T4N-R68W	<b>TVD Reference:</b>	WELL @ 5013.5ft (Ensign 131 RKB - 13.5')
<b>Reference Site:</b>	SRC Vista Pad Sec.2-T4N-R68W	<b>MD Reference:</b>	WELL @ 5013.5ft (Ensign 131 RKB - 13.5')
<b>Site Error:</b>	0.0 ft	<b>North Reference:</b>	True
<b>Reference Well:</b>	SRC Vista 44-2N-C	<b>Survey Calculation Method:</b>	Minimum Curvature
<b>Well Error:</b>	0.0 ft	<b>Output errors are at</b>	2.00 sigma
<b>Reference Wellbore</b>	Wellbore #1	<b>Database:</b>	US_EDM
<b>Reference Design:</b>	Plan #2 (9-21-15)	<b>Offset TVD Reference:</b>	Offset Datum

Offset Design													Offset Site Error:	0.0 ft
Survey Program: 0-MWD													Offset Well Error:	0.0 ft
Reference		Offset		Semi Major Axis			Distance							Warning
Measured Depth (ft)	Vertical Depth (ft)	Measured Depth (ft)	Vertical Depth (ft)	Reference (ft)	Offset (ft)	Highside Toolface (°)	Offset Wellbore Centre +N/-S (ft)	+E/-W (ft)	Between Centres (ft)	Between Ellipses (ft)	Minimum Separation (ft)	Separation Factor		
5,100.0	4,893.3	5,097.1	5,019.0	28.1	18.7	171.78	-709.3	-181.9	641.0	613.3	27.68	23.159		
5,200.0	4,988.3	5,196.4	5,116.3	28.7	19.1	171.74	-728.8	-186.5	652.9	624.6	28.28	23.082		
5,300.0	5,083.2	5,278.3	5,196.7	29.3	19.4	171.73	-743.9	-190.0	665.9	637.1	28.82	23.110		
5,318.4	5,100.6	5,300.0	5,218.1	29.4	19.5	171.74	-747.6	-190.9	668.7	639.8	28.93	23.115		
5,400.0	5,178.5	5,358.8	5,276.2	29.9	19.6	171.80	-756.6	-193.0	680.6	651.2	29.34	23.193		
5,500.0	5,274.8	5,439.1	5,355.8	30.3	19.8	171.88	-767.1	-195.5	694.6	664.8	29.80	23.308		
5,600.0	5,371.9	5,519.2	5,435.4	30.6	20.0	171.96	-775.4	-197.5	707.8	677.6	30.20	23.440		
5,700.0	5,469.9	5,600.0	5,515.9	30.9	20.2	172.06	-781.5	-198.9	720.3	689.8	30.54	23.588		
5,800.0	5,568.5	5,678.8	5,594.6	31.2	20.3	172.16	-785.4	-199.8	732.1	701.3	30.81	23.759		
5,900.0	5,667.6	5,758.3	5,674.1	31.4	20.4	172.27	-787.2	-200.3	743.1	712.0	31.04	23.940		
6,000.0	5,767.1	5,851.3	5,767.1	31.6	20.5	172.38	-787.3	-200.3	752.7	721.5	31.23	24.104		
6,100.0	5,866.9	5,951.1	5,866.9	31.8	20.6	172.47	-787.3	-200.3	759.1	727.7	31.38	24.192		
6,200.0	5,966.8	6,051.0	5,966.8	31.9	20.7	172.50	-787.3	-200.3	761.9	730.4	31.48	24.202		
6,233.2	6,000.0	6,084.2	6,000.0	31.9	20.8	-0.25	-787.3	-200.3	762.1	709.9	52.23	14.591		
6,300.0	6,066.8	6,151.0	6,066.8	32.0	20.9	-0.25	-787.3	-200.3	762.1	709.8	52.36	14.555		
6,400.0	6,166.8	6,251.0	6,166.8	32.0	21.0	-0.25	-787.3	-200.3	762.1	709.6	52.55	14.504		
6,417.0	6,183.8	6,268.0	6,183.8	32.1	21.0	-0.25	-787.3	-200.3	762.1	709.5	52.58	14.495		
6,450.0	6,216.8	6,300.8	6,216.5	32.1	21.0	-89.75	-787.3	-199.5	762.1	730.0	32.17	23.688		
6,500.0	6,266.6	6,350.4	6,266.0	32.1	21.1	-89.75	-787.2	-195.5	762.1	729.8	32.30	23.597		
6,550.0	6,316.0	6,400.0	6,315.0	32.1	21.1	-89.76	-787.1	-188.2	762.2	729.8	32.40	23.525		
6,600.0	6,364.8	6,449.6	6,363.5	32.2	21.1	-89.76	-787.0	-177.4	762.2	729.7	32.47	23.471		
6,650.0	6,412.7	6,499.3	6,411.0	32.2	21.2	-89.76	-786.9	-163.3	762.2	729.7	32.53	23.430		
6,700.0	6,459.5	6,548.9	6,457.5	32.2	21.2	-89.77	-786.6	-145.9	762.3	729.7	32.58	23.398		
6,750.0	6,504.9	6,598.6	6,502.7	32.2	21.2	-89.78	-786.4	-125.4	762.3	729.7	32.63	23.367		
6,800.0	6,548.8	6,648.2	6,546.4	32.2	21.2	-89.79	-786.1	-101.7	762.4	729.7	32.68	23.327		
6,850.0	6,590.9	6,697.9	6,588.3	32.2	21.2	-89.80	-785.8	-75.1	762.5	729.7	32.77	23.268		
6,900.0	6,631.0	6,747.6	6,628.3	32.2	21.2	-89.81	-785.5	-45.7	762.6	729.7	32.90	23.177		
6,950.0	6,668.9	6,797.3	6,666.2	32.2	21.3	-89.82	-785.1	-13.5	762.7	729.6	33.10	23.041		
7,000.0	6,704.5	6,847.0	6,701.7	32.3	21.3	-89.83	-784.7	21.3	762.8	729.4	33.39	22.846		
7,050.0	6,737.6	6,896.7	6,734.8	32.3	21.3	-89.84	-784.3	58.4	762.9	729.1	33.78	22.582		
7,100.0	6,767.9	6,946.5	6,765.3	32.3	21.4	-89.86	-783.8	97.8	763.0	728.7	34.31	22.240		
7,150.0	6,795.4	6,996.3	6,792.9	32.4	21.4	-89.87	-783.3	139.1	763.1	728.1	34.98	21.817		
7,200.0	6,819.9	7,046.1	6,817.6	32.4	21.5	-89.88	-782.8	182.4	763.3	727.4	35.81	21.315		
7,250.0	6,841.3	7,095.9	6,839.3	32.5	21.6	-89.90	-782.3	227.2	763.4	726.6	36.80	20.742		
7,300.0	6,859.5	7,145.8	6,857.7	32.6	21.8	-89.92	-781.7	273.5	763.5	725.6	37.97	20.109		
7,350.0	6,874.4	7,195.7	6,873.0	32.8	22.1	-89.93	-781.2	321.0	763.7	724.4	39.30	19.433		
7,400.0	6,886.0	7,245.6	6,884.9	32.9	22.4	-89.95	-780.6	369.5	763.8	723.0	40.78	18.731		
7,450.0	6,894.1	7,295.5	6,893.4	33.1	22.9	-89.97	-780.0	418.7	764.0	721.6	42.40	18.019		
7,500.0	6,898.8	7,345.5	6,898.4	33.4	23.5	-89.98	-779.4	468.4	764.1	720.0	44.13	17.313		
7,542.0	6,900.0	7,387.5	6,900.0	33.6	24.1	-90.00	-778.9	510.3	764.2	718.6	45.67	16.733		
7,600.0	6,900.0	7,445.5	6,900.0	34.0	25.0	-90.00	-778.3	568.3	764.4	716.5	47.91	15.955		
7,700.0	6,900.0	7,545.5	6,900.0	34.8	26.8	-90.00	-777.1	668.3	764.7	712.7	51.99	14.708		
7,800.0	6,900.0	7,645.5	6,900.0	35.9	28.9	-90.00	-775.9	768.3	765.0	708.7	56.34	13.579		
7,900.0	6,900.0	7,745.5	6,900.0	37.3	31.0	-90.00	-774.7	868.3	765.3	704.4	60.89	12.568		
8,000.0	6,900.0	7,845.5	6,900.0	38.9	33.3	-90.00	-773.6	968.3	765.6	700.0	65.61	11.669		
8,100.0	6,900.0	7,945.5	6,900.0	40.7	35.7	-90.00	-772.4	1,068.3	765.9	695.4	70.46	10.870		
8,200.0	6,900.0	8,045.5	6,900.0	42.6	38.1	-90.00	-771.2	1,168.3	766.2	690.8	75.41	10.160		
8,300.0	6,900.0	8,145.5	6,900.0	44.7	40.6	-90.00	-770.1	1,268.3	766.5	686.0	80.45	9.527		
8,400.0	6,900.0	8,245.5	6,900.0	46.9	43.2	-90.00	-768.9	1,368.2	766.8	681.2	85.56	8.962		
8,500.0	6,900.0	8,345.5	6,900.0	49.2	45.7	-90.00	-767.7	1,468.2	767.1	676.3	90.73	8.454		
8,600.0	6,900.0	8,445.5	6,900.0	51.5	48.3	-90.00	-766.5	1,568.2	767.4	671.4	95.95	7.997		
8,700.0	6,900.0	8,545.5	6,900.0	53.9	50.9	-90.00	-765.4	1,668.2	767.7	666.5	101.21	7.585		

CC - Min centre to center distance or convergent point, SF - min separation factor, ES - min ellipse separation

<b>Company:</b>	Synergy Resources	<b>Local Co-ordinate Reference:</b>	Well SRC Vista 44-2N-C
<b>Project:</b>	SEC.2-T4N-R68W	<b>TVD Reference:</b>	WELL @ 5013.5ft (Ensign 131 RKB - 13.5')
<b>Reference Site:</b>	SRC Vista Pad Sec.2-T4N-R68W	<b>MD Reference:</b>	WELL @ 5013.5ft (Ensign 131 RKB - 13.5')
<b>Site Error:</b>	0.0 ft	<b>North Reference:</b>	True
<b>Reference Well:</b>	SRC Vista 44-2N-C	<b>Survey Calculation Method:</b>	Minimum Curvature
<b>Well Error:</b>	0.0 ft	<b>Output errors are at</b>	2.00 sigma
<b>Reference Wellbore</b>	Wellbore #1	<b>Database:</b>	US_EDM
<b>Reference Design:</b>	Plan #2 (9-21-15)	<b>Offset TVD Reference:</b>	Offset Datum

Offset Design		SRC Vista Pad Sec.2-T4N-R68W - SRC Vista D-2N-C - Wellbore #1 - Plan #2 (9-21-15)										Offset Site Error:		0.0 ft
Survey Program: 0-MWD												Offset Well Error:		0.0 ft
Reference		Offset		Semi Major Axis			Distance							Warning
Measured Depth	Vertical Depth	Measured Depth	Vertical Depth	Reference	Offset	Highside Toolface	Offset Wellbore Centre		Between Centres	Between Ellipses	Minimum Separation	Separation Factor		
(ft)	(ft)	(ft)	(ft)	(ft)	(ft)	(°)	+N/-S (ft)	+E/-W (ft)	(ft)	(ft)	(ft)			
8,800.0	6,900.0	8,645.5	6,900.0	56.4	53.6	-90.00	-764.2	1,768.2	768.0	661.5	106.51	7.210		
8,900.0	6,900.0	8,745.5	6,900.0	58.9	56.2	-90.00	-763.0	1,868.2	768.3	656.4	111.84	6.869		
9,000.0	6,900.0	8,845.5	6,900.0	61.4	58.9	-90.00	-761.8	1,968.2	768.6	651.4	117.19	6.558		
9,100.0	6,900.0	8,945.5	6,900.0	64.0	61.5	-90.00	-760.7	2,068.2	768.9	646.3	122.57	6.273		
9,200.0	6,900.0	9,045.5	6,900.0	66.5	64.2	-90.00	-759.5	2,168.2	769.1	641.2	127.97	6.010		
9,300.0	6,900.0	9,145.5	6,900.0	69.1	66.9	-90.00	-758.3	2,268.2	769.4	636.1	133.38	5.769		
9,400.0	6,900.0	9,245.5	6,900.0	71.7	69.6	-90.00	-757.2	2,368.2	769.7	630.9	138.82	5.545		
9,500.0	6,900.0	9,345.5	6,900.0	74.4	72.3	-90.00	-756.0	2,468.2	770.0	625.8	144.26	5.338		
9,600.0	6,900.0	9,445.5	6,900.0	77.0	75.1	-90.00	-754.8	2,568.2	770.3	620.6	149.72	5.145		
9,700.0	6,900.0	9,545.5	6,900.0	79.7	77.8	-90.00	-753.6	2,668.1	770.6	615.4	155.19	4.966		
9,800.0	6,900.0	9,645.5	6,900.0	82.3	80.5	-90.00	-752.5	2,768.1	770.9	610.3	160.66	4.798		
9,900.0	6,900.0	9,745.5	6,900.0	85.0	83.3	-90.00	-751.3	2,868.1	771.2	605.1	166.15	4.642		
10,000.0	6,900.0	9,845.5	6,900.0	87.7	86.0	-90.00	-750.1	2,968.1	771.5	599.9	171.64	4.495		
10,100.0	6,900.0	9,945.5	6,900.0	90.4	88.7	-90.00	-748.9	3,068.1	771.8	594.7	177.15	4.357		
10,200.0	6,900.0	10,045.5	6,900.0	93.1	91.5	-90.00	-747.8	3,168.1	772.1	589.5	182.66	4.227		
10,300.0	6,900.0	10,145.5	6,900.0	95.8	94.2	-90.00	-746.6	3,268.1	772.4	584.2	188.17	4.105		
10,400.0	6,900.0	10,245.4	6,900.0	98.5	97.0	-90.00	-745.4	3,368.1	772.7	579.0	193.69	3.989		
10,500.0	6,900.0	10,345.4	6,900.0	101.2	99.8	-90.00	-744.3	3,468.1	773.0	573.8	199.22	3.880		
10,600.0	6,900.0	10,445.4	6,900.0	103.9	102.5	-90.00	-743.1	3,568.1	773.3	568.6	204.75	3.777		
10,700.0	6,900.0	10,545.4	6,900.0	106.7	105.3	-90.00	-741.9	3,668.1	773.6	563.3	210.28	3.679		
10,800.0	6,900.0	10,645.4	6,900.0	109.4	108.0	-90.00	-740.7	3,768.1	773.9	558.1	215.82	3.586		
10,900.0	6,900.0	10,745.4	6,900.0	112.1	110.8	-90.00	-739.6	3,868.1	774.2	552.8	221.36	3.497		
11,000.0	6,900.0	10,845.4	6,900.0	114.9	113.6	-90.00	-738.4	3,968.1	774.5	547.6	226.91	3.413		
11,100.0	6,900.0	10,945.4	6,900.0	117.6	116.3	-90.00	-737.2	4,068.0	774.8	542.3	232.46	3.333		
11,200.0	6,900.0	11,045.4	6,900.0	120.3	119.1	-90.00	-736.0	4,168.0	775.1	537.1	238.01	3.257		
11,300.0	6,900.0	11,145.4	6,900.0	123.1	121.9	-90.00	-734.9	4,268.0	775.4	531.8	243.56	3.184		
11,400.0	6,900.0	11,245.4	6,900.0	125.8	124.7	-90.00	-733.7	4,368.0	775.7	526.6	249.12	3.114		
11,500.0	6,900.0	11,345.4	6,900.0	128.6	127.4	-90.00	-732.5	4,468.0	776.0	521.3	254.68	3.047		
11,600.0	6,900.0	11,445.4	6,900.0	131.4	130.2	-90.00	-731.3	4,568.0	776.3	516.0	260.24	2.983		
11,615.0	6,900.0	11,460.4	6,900.0	131.8	130.6	-90.00	-731.2	4,583.0	776.3	515.2	261.07	2.974 SF		

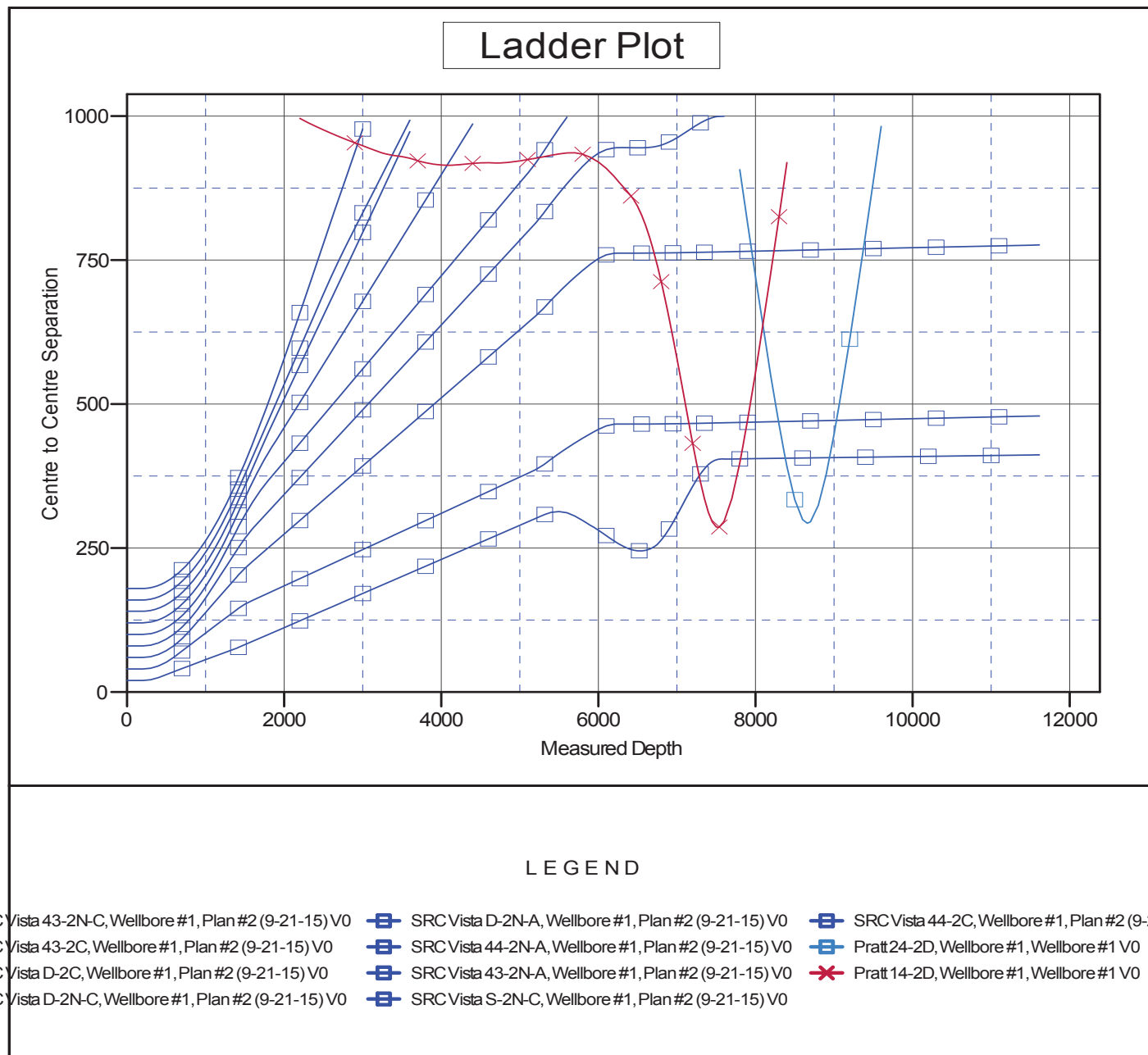
<b>Company:</b>	Synergy Resources	<b>Local Co-ordinate Reference:</b>	Well SRC Vista 44-2N-C
<b>Project:</b>	SEC.2-T4N-R68W	<b>TVD Reference:</b>	WELL @ 5013.5ft (Ensign 131 RKB - 13.5')
<b>Reference Site:</b>	SRC Vista Pad Sec.2-T4N-R68W	<b>MD Reference:</b>	WELL @ 5013.5ft (Ensign 131 RKB - 13.5')
<b>Site Error:</b>	0.0 ft	<b>North Reference:</b>	True
<b>Reference Well:</b>	SRC Vista 44-2N-C	<b>Survey Calculation Method:</b>	Minimum Curvature
<b>Well Error:</b>	0.0 ft	<b>Output errors are at</b>	2.00 sigma
<b>Reference Wellbore</b>	Wellbore #1	<b>Database:</b>	US_EDM
<b>Reference Design:</b>	Plan #2 (9-21-15)	<b>Offset TVD Reference:</b>	Offset Datum

Offset Design		SRC Vista Pad Sec.2-T4N-R68W - SRC Vista S-2N-C - Wellbore #1 - Plan #2 (9-21-15)												Offset Site Error:		0.0 ft		
Survey Program: 0-MWD																Offset Well Error:		0.0 ft
Reference		Offset		Semi Major Axis			Distance											
Measured Depth	Vertical Depth	Measured Depth	Vertical Depth	Reference	Offset	Highside Toolface	Offset Wellbore Centre		Between Centres	Between Ellipses	Minimum Separation	Separation Factor	Warning					
(ft)	(ft)	(ft)	(ft)	(ft)	(ft)	(°)	+N/-S (ft)	+E/-W (ft)	(ft)	(ft)	(ft)							
0.0	0.0	0.0	0.0	0.0	0.0	-0.09	180.0	-0.3	180.0									
100.0	100.0	100.0	100.0	0.1	0.1	-0.09	180.0	-0.3	180.0	179.7	0.22	800.656						
200.0	200.0	200.0	200.0	0.3	0.3	-0.09	180.0	-0.3	180.0	179.3	0.67	266.885	CC, ES					
300.0	300.0	300.0	300.0	0.5	0.6	172.72	180.0	-0.3	181.3	180.1	1.11	163.212						
400.0	399.9	399.9	399.9	0.7	0.8	172.87	180.0	-0.3	185.2	183.6	1.55	119.418						
500.0	499.7	499.7	499.7	1.0	1.0	173.10	180.0	-0.3	191.6	189.6	2.00	95.629						
600.0	599.3	599.3	599.3	1.2	1.2	173.40	180.0	-0.3	200.7	198.3	2.46	81.471						
700.0	698.6	698.6	698.6	1.5	1.5	173.74	180.0	-0.3	212.4	209.5	2.93	72.567						
800.0	797.5	797.5	797.5	1.8	1.7	174.11	180.0	-0.3	226.7	223.3	3.39	66.814						
900.0	896.1	896.1	896.1	2.2	1.9	174.50	180.0	-0.3	243.5	239.7	3.86	63.090						
1,000.0	994.2	994.2	994.2	2.6	2.1	174.88	180.0	-0.3	263.0	258.6	4.33	60.744						
1,100.0	1,091.7	1,091.7	1,091.7	3.0	2.3	175.25	180.0	-0.3	285.0	280.2	4.80	59.374						
1,200.0	1,188.6	1,188.6	1,188.6	3.5	2.6	175.60	180.0	-0.3	309.5	304.2	5.27	58.719						
1,300.0	1,284.9	1,284.9	1,284.9	4.1	2.8	175.92	180.0	-0.3	336.6	330.8	5.74	58.600	SF					
1,400.0	1,380.4	1,380.4	1,380.4	4.6	3.0	176.22	180.0	-0.3	366.2	359.9	6.22	58.893						
1,419.8	1,399.2	1,399.2	1,399.2	4.7	3.0	176.28	180.0	-0.3	372.3	366.0	6.31	58.992						
1,500.0	1,475.3	1,470.2	1,470.2	5.2	3.2	176.43	180.4	-0.7	397.9	391.2	6.69	59.501						
1,600.0	1,570.3	1,557.8	1,557.7	5.8	3.4	176.41	182.4	-2.4	431.3	424.1	7.16	60.203						
1,700.0	1,665.2	1,644.3	1,644.2	6.5	3.6	176.21	185.8	-5.4	466.1	458.5	7.64	60.983						
1,800.0	1,760.2	1,729.8	1,729.4	7.1	3.8	175.87	190.6	-9.7	502.4	494.3	8.13	61.823						
1,900.0	1,855.1	1,814.0	1,813.2	7.7	4.0	175.42	196.8	-15.1	540.3	531.6	8.62	62.707						
2,000.0	1,950.0	1,899.6	1,898.2	8.3	4.2	174.89	204.4	-21.8	579.5	570.4	9.12	63.561						
2,100.0	2,045.0	1,991.3	1,989.2	9.0	4.4	174.35	212.9	-29.3	619.2	609.6	9.63	64.291						
2,200.0	2,139.9	2,082.9	2,080.1	9.6	4.6	173.88	221.4	-36.8	658.9	648.8	10.15	64.914						
2,300.0	2,234.9	2,174.6	2,171.0	10.2	4.9	173.47	229.9	-44.3	698.7	688.0	10.68	65.431						
2,400.0	2,329.8	2,266.2	2,262.0	10.9	5.1	173.09	238.4	-51.8	738.4	727.2	11.21	65.888						
2,500.0	2,424.8	2,357.9	2,352.9	11.5	5.4	172.76	246.9	-59.3	778.2	766.5	11.74	66.281						
2,600.0	2,519.7	2,449.5	2,443.9	12.1	5.7	172.46	255.4	-66.8	818.1	805.8	12.28	66.622						
2,700.0	2,614.7	2,541.2	2,534.8	12.8	5.9	172.18	263.9	-74.3	857.9	845.1	12.82	66.919						
2,800.0	2,709.6	2,632.8	2,625.8	13.4	6.2	171.93	272.4	-81.8	897.8	884.4	13.36	67.180						
2,900.0	2,804.5	2,724.5	2,716.7	14.0	6.5	171.71	280.9	-89.3	937.6	923.7	13.91	67.410						
3,000.0	2,899.5	2,816.1	2,807.6	14.7	6.7	171.50	289.4	-96.8	977.5	963.0	14.46	67.614						

<b>Company:</b>	Synergy Resources	<b>Local Co-ordinate Reference:</b>	Well SRC Vista 44-2N-C
<b>Project:</b>	SEC.2-T4N-R68W	<b>TVD Reference:</b>	WELL @ 5013.5ft (Ensign 131 RKB - 13.5')
<b>Reference Site:</b>	SRC Vista Pad Sec.2-T4N-R68W	<b>MD Reference:</b>	WELL @ 5013.5ft (Ensign 131 RKB - 13.5')
<b>Site Error:</b>	0.0 ft	<b>North Reference:</b>	True
<b>Reference Well:</b>	SRC Vista 44-2N-C	<b>Survey Calculation Method:</b>	Minimum Curvature
<b>Well Error:</b>	0.0 ft	<b>Output errors are at</b>	2.00 sigma
<b>Reference Wellbore</b>	Wellbore #1	<b>Database:</b>	US_EDM
<b>Reference Design:</b>	Plan #2 (9-21-15)	<b>Offset TVD Reference:</b>	Offset Datum

Reference Depths are relative to WELL @ 5013.5ft (Ensign 131 RKB -  
Offset Depths are relative to Offset Datum  
Central Meridian is -105.500000

Coordinates are relative to: SRC Vista 44-2N-C  
Coordinate System is US State Plane 1983, Colorado Northern Zone  
Grid Convergence at Surface is: 0.34°



<b>Company:</b>	Synergy Resources	<b>Local Co-ordinate Reference:</b>	Well SRC Vista 44-2N-C
<b>Project:</b>	SEC.2-T4N-R68W	<b>TVD Reference:</b>	WELL @ 5013.5ft (Ensign 131 RKB - 13.5')
<b>Reference Site:</b>	SRC Vista Pad Sec.2-T4N-R68W	<b>MD Reference:</b>	WELL @ 5013.5ft (Ensign 131 RKB - 13.5')
<b>Site Error:</b>	0.0 ft	<b>North Reference:</b>	True
<b>Reference Well:</b>	SRC Vista 44-2N-C	<b>Survey Calculation Method:</b>	Minimum Curvature
<b>Well Error:</b>	0.0 ft	<b>Output errors are at</b>	2.00 sigma
<b>Reference Wellbore</b>	Wellbore #1	<b>Database:</b>	US_EDM
<b>Reference Design:</b>	Plan #2 (9-21-15)	<b>Offset TVD Reference:</b>	Offset Datum

Reference Depths are relative to WELL @ 5013.5ft (Ensign 131 RKB -  
Offset Depths are relative to Offset Datum  
Central Meridian is -105.500000

Coordinates are relative to: SRC Vista 44-2N-C  
Coordinate System is US State Plane 1983, Colorado Northern Zone  
Grid Convergence at Surface is: 0.34°

