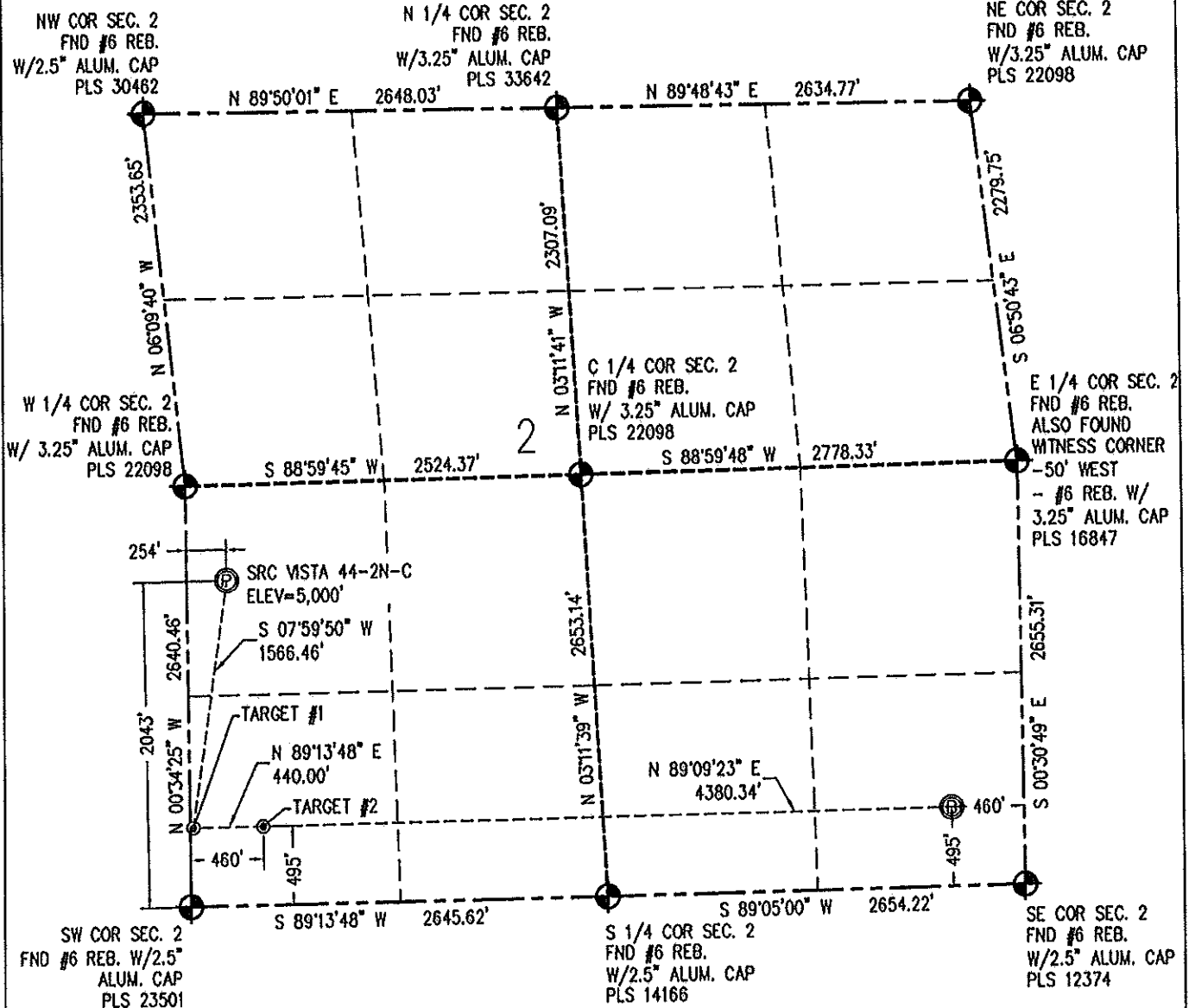


**WELL LOCATION CERTIFICATE**  
THIS MAP DOES NOT REPRESENT A BOUNDARY SURVEY

Scale 1" = 1000 ft

**NOTES:**

- 1) NEAREST CULTURAL ITEMS:  
BUILDING: 1021' SW  
BUILDING UNIT: 1021' W  
HIGH OCCUPANCY BUILDING UNIT: 5280'+  
DESIGNATED OUTSIDE ACTIVITY AREA: 5280'+  
PUBLIC ROAD: INTERSTATE 25 235' W  
ABOVE GROUND UTILITY: 205' W  
RAILROAD: 5280'+  
PROPERTY LINE: 204' W
- 2) SURFACE USE: REMEDIATED GROUND.
- 3) OPERATOR NAME: BRETT BIRCH.
- 4) THE NEAREST EXISTING WELL IS: PRATT 14-20 1087' SE.
- 5) Bearings shown are grid bearings of the Colorado State Plane Coordinate System, North Zone, North American Datum 1983/2007. The lined dimensions as contained herein are based upon the "U.S. Survey Foot."
- 6) Ground elevations are based on unobserved GPS elevation (NAD83 DATUM).
- 7) IMPROVEMENTS: See LOCATION DRAWING for all visible improvements within 500' of disturbed area.

IN ACCORDANCE WITH A REQUEST FROM CRAIG RASMUSON - SYNERGY RESOURCES, BASELINE ENGINEERING CORP. HAS DETERMINED THE LOCATION OF THE SRC VISTA 44-2N-C TO BE 2043' FSL AND 254' FWL, AS MEASURED AT NINETY (90) DEGREES FROM THE SECTION LINE OF SECTION 2, TOWNSHIP 4 NORTH, RANGE 68 WEST, AND THE BOTTOM HOLE LOCATION TO BE 495' FSL AND 460' FWL OF SECTION 2, TOWNSHIP 4 NORTH, RANGE 68 WEST, 6TH PRINCIPAL MERIDIAN, WELD COUNTY, COLORADO.

I HEREBY CERTIFY THAT THIS WELL LOCATION CERTIFICATE WAS PREPARED BY ME, OR UNDER MY DIRECT SUPERVISION, THAT THE FIELD WORK WAS COMPLETED ON 07/28/2014, THAT IT IS NOT A LAND SURVEY PLAT OR AN IMPROVEMENT SURVEY PLAT, AND THAT IT IS NOT TO BE RELIED UPON FOR ESTABLISHMENT OF FENCE, BUILDING, OR OTHER FUTURE IMPROVEMENT LINES.

**SURFACE HOLE:**  
LATITUDE: 40.341118° N  
LONGITUDE: 104.978904° W  
POOP: 0.6  
1/4, 1/4: NW1/4SW1/4

**BOTTOM HOLE:**  
LATITUDE: 40.336979° N  
LONGITUDE: 104.962432° W

**TARGET #1:**  
LATITUDE: 40.336865° N  
LONGITUDE: 104.979718° W

**TARGET #2:**  
LATITUDE: 40.336874° N  
LONGITUDE: 104.978141° W

**LEGEND**

- - FOUND/SET SURVEY MONUMENT PER MONUMENT RECORD EXCEPTIONS NOTED.
- - CALCULATED SURVEY MONUMENT POSITION
- (c) - CALCULATED DIMENSION



AARON A. DEMO  
Professional Land Surveyor Registration No. 38285  
State of Colorado  
FOR AND ON BEHALF OF BASELINE ENGINEERING CORP.

Completed  
9/16/2015

PROJECT #: SYND4168W02-01