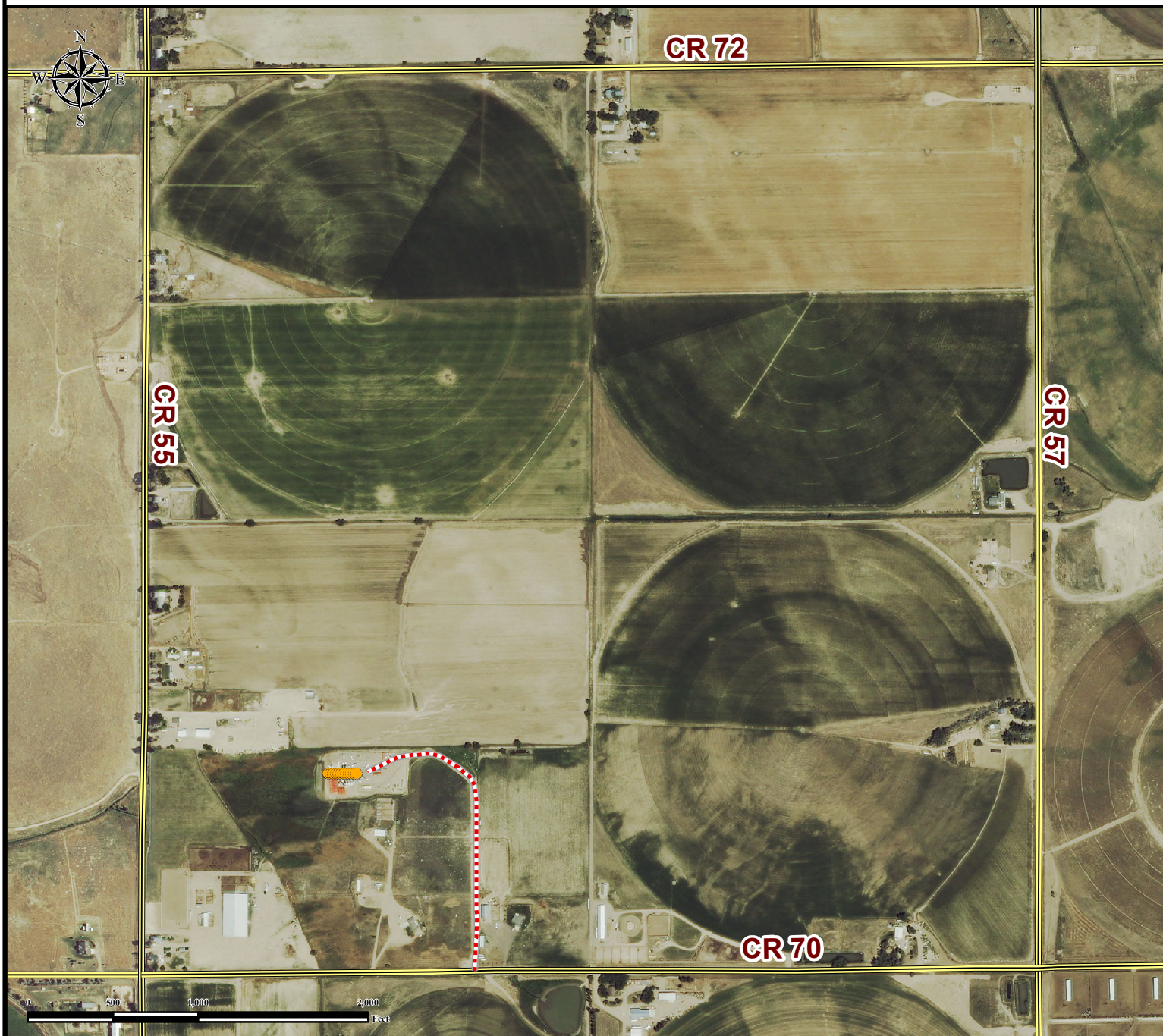





ALBRIGHTON 10-P PAD ACCESS ROAD MAP



From Greeley, CO: From the intersection of 8th St and US-85 N,
Drive East on 8th St for ± 3.1 miles and continue straight as the road turns into CR 60 1/2.
Continue East on CR 60 1/2 for ± 3.9 miles and turn Left onto CO-37.
Drive North on CO-37 for ± 3.5 miles and continue straight on to CR 55.
Drive North on CR 55 for ± 1.0 mile and turn Right on CR 70.
Drive East on CR 70 for ± 0.4 miles to Existing Access Road and turn left.
Drive North on Existing Access Road for ± 1810 feet to Proposed Production Facility.

Total distance from Greeley, CO to Proposed Production Facility is ± 12.2 miles.

Legend

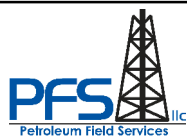
 Proposed Well
  Existing Access Road
  Public Road

Reference Location

**** ALBRIGHTON 1-10 ****

Lat: 40.496613°
 Long: -104.541150° (NAD83)
 Elevation: 4808 Feet
 1170' FSL & 1318' FWL
 PDOP: 2.4

Operator: BART PFEIFER
 Date of Measurement: 05-16-14



FIELD DATE:
06-08-15

DRAWING DATE:
09-10-15

BY:
CSG

CHECKED BY:
KAD

SITE NAME:
ALBRIGHTON 10-P PAD

SURFACE LOCATION:
 SW1/4 SW1/4 SEC. 10, T6N, R64W, 6TH P.M.
 WELD COUNTY, COLORADO

PREPARED FOR:

