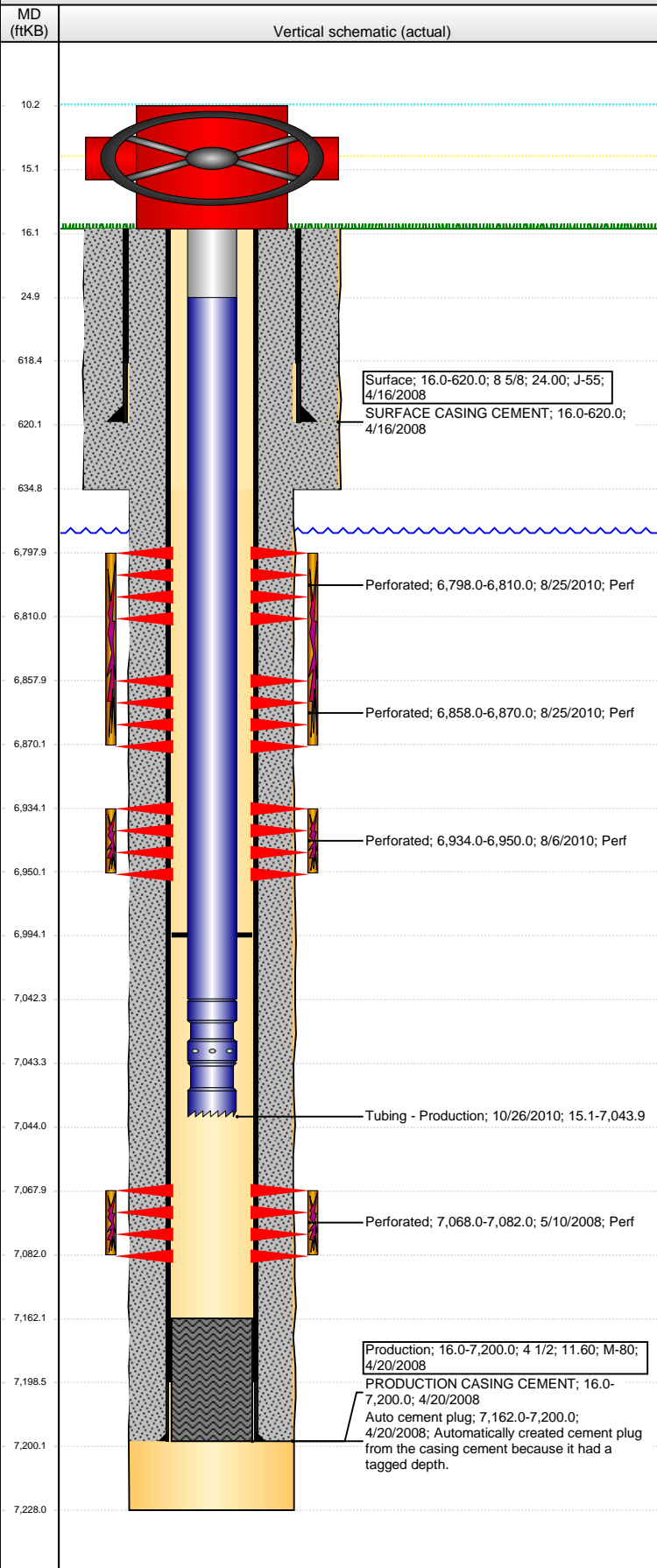


Well Name: HORST 06-25

VERTICAL - ORIGINAL HOLE, 9/21/2015 9:31:41 AM



Well Header

API	Business Unit	District	Well Config
05-123-25650	DJ BASIN	15	VERTICAL
Original KB Elevation (ft)	KB - GL / MSL (ftKB)	Spud Date	P & A Date
4,857.00	16.00	4/16/2008	
Comment			

Directions To Well

RDS 38 & 49, SOUTH 2/10, EAST 1/10, SE AND EAST INTO.

Congressional Location

Quarter 1	Quarter 2	Quarter 3	Quarter 4	Section	Township	Twnshp N...	Range	Rng E/W Dir
		SE	NW	6	3	N	64	W

Bottom Hole Location

North-South Distance (ft)	From N or S Line	East-West Distance (ft)	From E or W Line

Plug Back Total Depths

Date	Depth (ftKB)	Method	Com
4/20/2008	7,162.0	CASED HOLE LOG	DEPTH - LOGGER ON CBL
4/20/2008	7,184.0	CASING TALLY	GUIDE SHOE
8/6/2010	6,994.0	WIRELINE TAG	SAND PLUG

Wellbore Sections

Section Des	Size (in)	Act Top, MD (ftKB)	Act Btm, MD (ftKB)
SURFACE	12 1/4	16.0	635.0
PRODUCTION	7 7/8	635.0	7,228.0

Zone Statuses

Zone Name	Status Date	Status	Fluid Type	Job	Prod Method
CODELL	5/21/2008	PR		DRILLING/CO...	
CODELL	8/4/2010	SI		RECOMPLETI...	
CODELL	11/1/2010	PR		RECOMPLETI...	
NIOBRARA	8/27/2010	PR		RECOMPLETI...	
NIOBRARA	11/1/2010	PR		RECOMPLETI...	

Casing Strings

Surface, 620.0ftKB

Casing Description	Run Date	OD (in)	Wt/Len (l...	Grade	Top, MD (ft...	MD (ftKB)
Surface	4/16/2008	8 5/8	24.00	J-55	16.0	620.0

Production, 7,200.0ftKB

Casing Description	Run Date	OD (in)	Wt/Len (l...	Grade	Top, MD (ft...	MD (ftKB)
Production	4/20/2008	4 1/2	11.60	M-80	16.0	7,200.0

Cement

Description	Top Depth (ftKB)	Bottom Depth (ftKB)
SURFACE CASING CEMENT	16.0	620.0
Description	Top Depth (ftKB)	Bottom Depth (ftKB)
PRODUCTION CASING CEMENT	16.0	7,200.0

Tubing Strings

Tubing Description	Run Date	String...	ID (in)	Wt (lb/ft)	Grade	Len (ft)	Set De...
Tubing - Production	6/13/2008	2 3/8	1.995	4.70	?	7,040.00	
Tubing Description	Run Date	String...	ID (in)	Wt (lb/ft)	Grade	Len (ft)	Set De...
Tubing - Production	10/26/2010	2 3/8	1.995	4.70	J-55	7,028.77	

Tubing Components

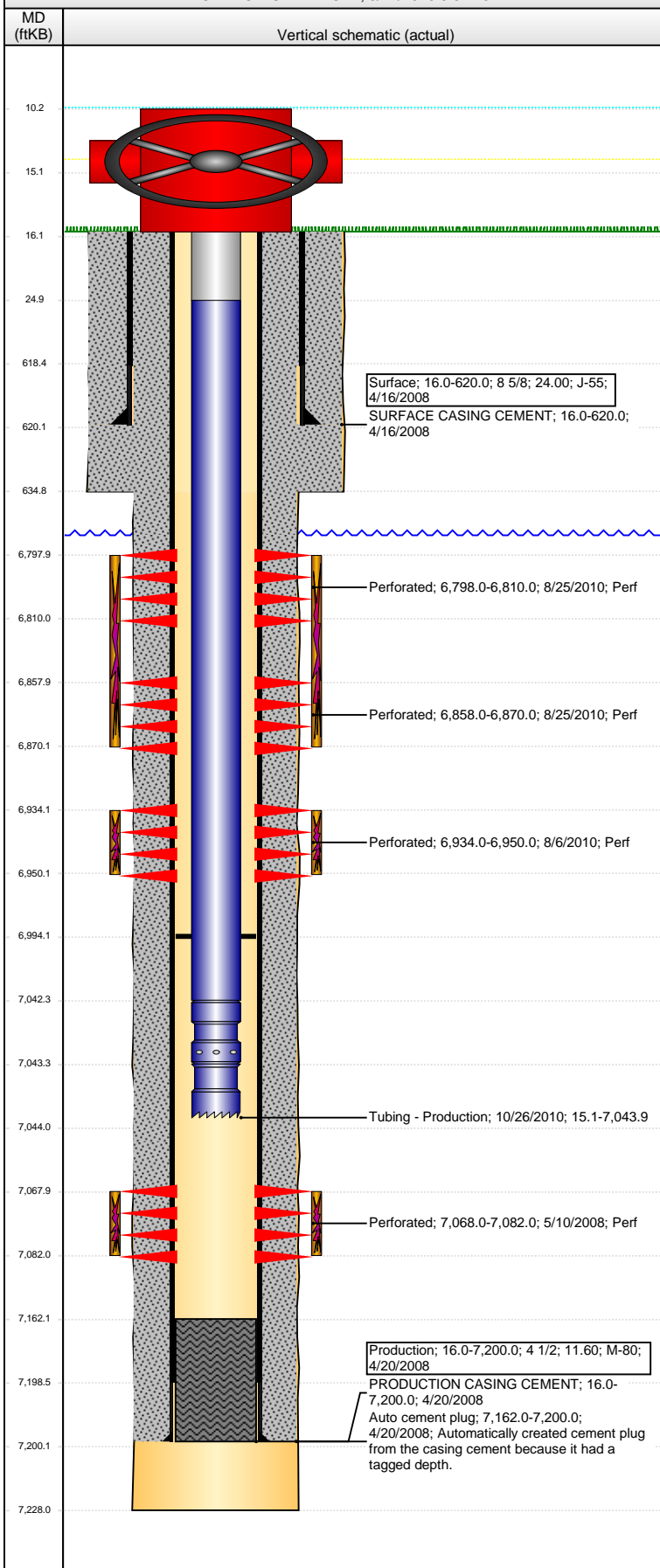
Item Des	OD (in)	Wt (lb/ft)	Grade	Jts	Len (ft)	Btm (ftKB)	Btm (TVD) (ftKB)
Tubing Pup Joint	2 3/8	4.70	J-55	1	10.00	25.1	
Tubing	2 3/8	4.70	J-55	226	7,017.12	7,042.2	
Pump Seating Nipple	2 3/8	4.70	J-55	1	1.10	7,043.3	
Notched collar	2 3/8	4.70	J-55	1	0.55	7,043.9	

Perforation Data

Zone	Bnch/St g	Entered Shot Total	Top (ftKB)	Btm (ftKB)	Date
NIOBRARA, ORIGINAL HOLE	A	24	6,798.00	6,810.00	8/25/2010
NIOBRARA, ORIGINAL HOLE	B	24	6,858.00	6,870.00	8/25/2010
NIOBRARA, ORIGINAL HOLE	C	32	6,934.00	6,950.00	8/6/2010
CODELL, ORIGINAL HOLE		56	7,068.00	7,082.00	5/10/2008

Well Name: HORST 06-25

VERTICAL - ORIGINAL HOLE, 9/21/2015 9:31:43 AM



Stimulations & Treatments

Date	Zone	Primary Job Type
5/13/2008	CODELL, ORIGINAL HOLE	DRILLING/COMPLETION - ORIGINAL
Technical Result		Tech Result Details
Success		According to Plan
Comment		
(NIOBRARA C RC): POST-FRAC: JOB WENT WELL. NO ISSUES TO REPORT. TREATMENT AVGS: 74.21 F, 10.39 PH, 17.02 CP, NOLTE = 0.05. 5 MIN PRESS @ 3658 PSI.		
Date	Zone	Primary Job Type
8/25/2010	NIOBRARA, ORIGINAL HOLE	RECOMPLETION
Technical Result		Tech Result Details
Success		According to Plan
Comment		
(NIOBRARA A&B RC): POST-FRAC: JOB WENT WELL. NO ISSUES TO REPORT. TREATMENT AVGS: 72.72 F, 10.43 PH, 16.34 CP, NOLTE = 0.13. 5 MIN = 3480 PSI.		

Other In Hole

Run Date	Des	OD (in)	Top (ftKB)	Btm (ftKB)

Logs

Date	Type	Top, MD (ftKB)	Btm, MD (ftKB)
4/20/2008	COMPENSATED DENSITY	3,750.0	7,208.0
4/20/2008	INDUCTION	620.0	7,228.0
5/7/2008	CBL/CCL/GR	16.0	7,160.0