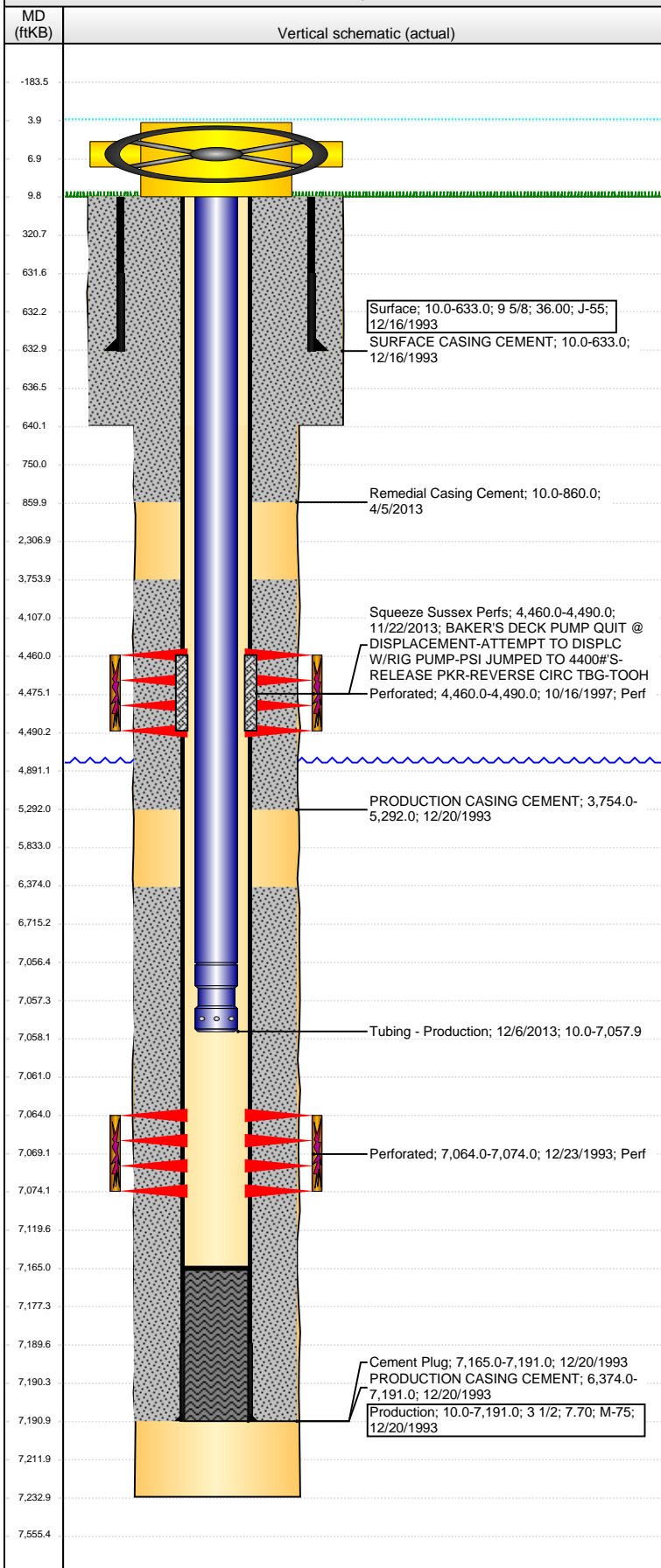


Well Name: RIVA RED D31-04

VERTICAL - ORIGINAL HOLE, 9/21/2015 8:49:39 AM



Well Header

API 05-123-16671	Business Unit DJ BASIN	District 15	Well Config VERTICAL
Original KB Elevation (ft) 4,813.00	KB - GL / MSL (ftKB) 10.00	Spud Date 12/15/1993	P & A Date
Comment			

Directions To Well

X-RDS OF 30 & 49 S 1 MILE E. 2 S.150' SW.1 INTO

Congressional Location

Quarter 1	Quarter 2	Quarter 3	Quarter 4	Section	Township	Twnshp N...	Range	Rng E/W Dir
		NW	NW	31	3	N	64	W

Bottom Hole Location

North-South Distance (ft)	From N or S Line	East-West Distance (ft)	From E or W Line
---------------------------	------------------	-------------------------	------------------

Plug Back Total Depths

Date	Depth (ftKB)	Method	Com
12/20/1993	7,165.0	CASING TALLY	
11/20/2013	6,564.0	TAG	RUN SLICKLINE TAG SAND PLUG
12/4/2013	7,165.0	TAG	C/O 601' OF SND

Wellbore Sections

Section Des	Size (in)	Act Top, MD (ftKB)	Act Btm, MD (ftKB)
SURFACE	12 1/4	10.0	640.0
PRODUCTION	7 7/8	640.0	7,233.0

Zone Statuses

Zone Name	Status Date	Status	Fluid Type	Job	Prod Method
SUSSEX	11/3/1997	PR	Oil	RECOMPLETI...	
SUSSEX	11/22/2013	AB		ABANDON ZO...	
CODELL	1/8/1994	PR	Oil	DRILLING/CO...	
CODELL	10/15/1997	SI		RECOMPLETI...	

Casing Strings

Surface, 633.0ftKB

Casing Description	Run Date	OD (in)	Wt/Len (l...	Grade	Top, MD (ft...	MD (ftKB)
Surface	12/16/1993	9 5/8	36.00	J-55	10.0	633.0

Production, 7,191.0ftKB

Casing Description	Run Date	OD (in)	Wt/Len (l...	Grade	Top, MD (ft...	MD (ftKB)
Production	12/20/1993	3 1/2	7.70	M-75	10.0	7,191.0

Cement

Description	Top Depth (ftKB)	Bottom Depth (ftKB)
SURFACE CASING CEMENT	10.0	633.0
PRODUCTION CASING CEMENT	3,754.0	5,292.0
PRODUCTION CASING CEMENT	6,374.0	7,191.0
Cement Plug	7,165.0	7,191.0
Remedial Casing Cement	10.0	860.0
Squeeze Sussex Perfs	4,460.0	4,490.0

Tubing Strings

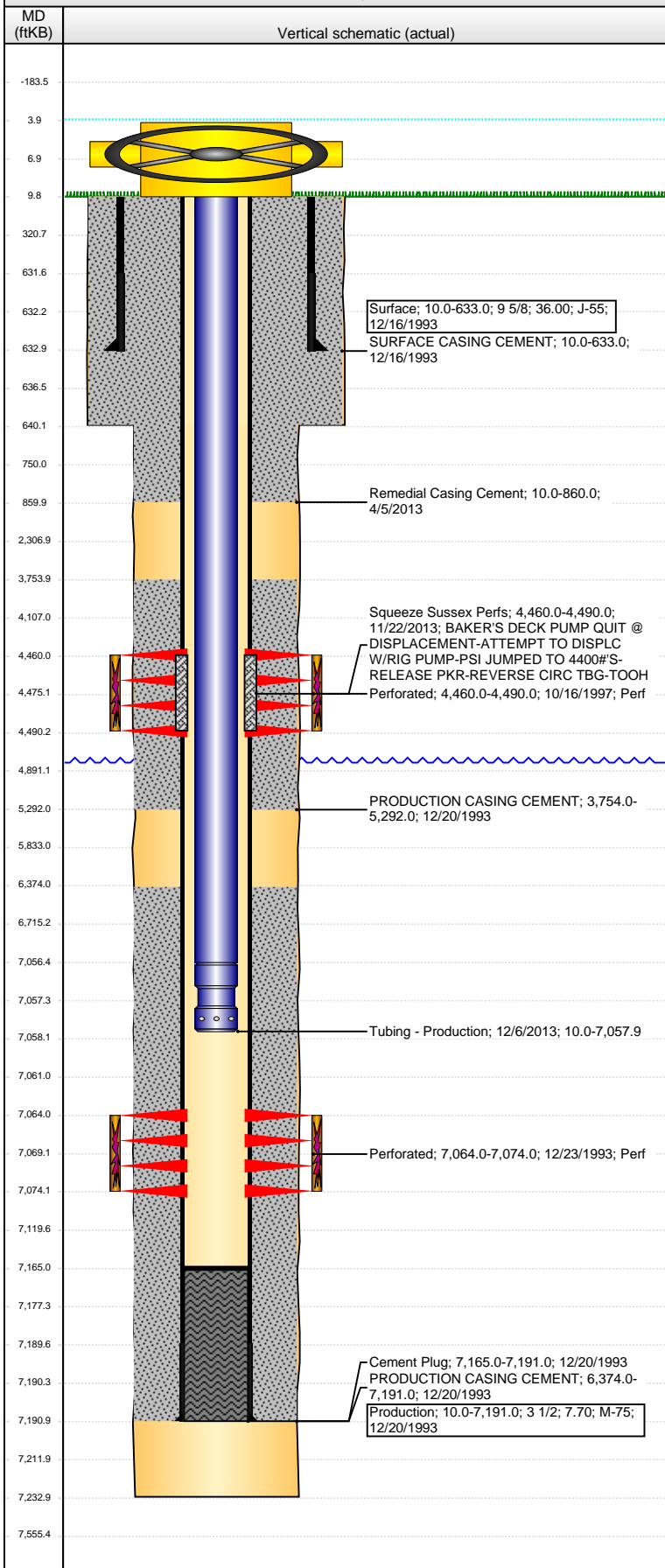
Tubing Description	Run Date	String...	ID (in)	Wt (lb/ft)	Grade	Len (ft)	Set De...
Tubing - Production	10/22/1997	2 1/16	1.751	3.25	J-55	4,441.00	
Tubing - Production	4/8/2013	2 1/16	1.751	3.25	J-55	4,443.65	
Tubing - Workstring	11/26/2013	2 1/16	1.751	3.25	C-75	4,153.00	
Tubing - Production	12/6/2013	2 1/16	1.751	3.25	J-55	7,047.92	

Tubing Components

Item Des	OD (in)	Wt (lb/ft)	Grade	Jts	Len (ft)	Btm (ftKB)	Btm (TVD) (ftKB)
Tubing	2 1/16	3.25	J-55	215	7,046.32	7,056.3	
Pump Seating Nipple-Notched	2 1/16	1.10		1	1.60	7,057.9	

Well Name: RIVA RED D31-04

VERTICAL - ORIGINAL HOLE, 9/21/2015 8:49:42 AM



Perforation Data					
Zone	Brnch/St g	Entered Shot Total	Top (ftKB)	Btm (ftKB)	Date
SUSSEX, ORIGINAL HOLE		61	4,460.00	4,490.00	10/16/1997
CODELL, ORIGINAL HOLE		40	7,064.00	7,074.00	12/23/1993

Stimulations & Treatments			
Date	Zone	Primary Job Type	
12/27/1993	CODELL, ORIGINAL HOLE	DRILLING/COMPLETION - ORIGINAL	
Technical Result		Tech Result Details	Tech Result Note

Comment			
Date	Zone	Primary Job Type	
10/18/1997	SUSSEX, ORIGINAL HOLE	RECOMPLETION	
Technical Result		Tech Result Details	Tech Result Note
Comment			

Other In Hole				
Run Date	Des	OD (in)	Top (ftKB)	Btm (ftKB)

Logs			
Date	Type	Top, MD (ftKB)	Btm, MD (ftKB)
12/19/1993	COMPENSATED DENSITY	3,900.0	7,250.0
12/19/1993	INDUCTION	4,300.0	4,600.0
12/23/1993	CEMENT BOND	3,650.0	7,158.0
2/23/2011	GYRO	10.0	4,450.0
4/8/2013	CBL/CCL/GR	10.0	1,000.0