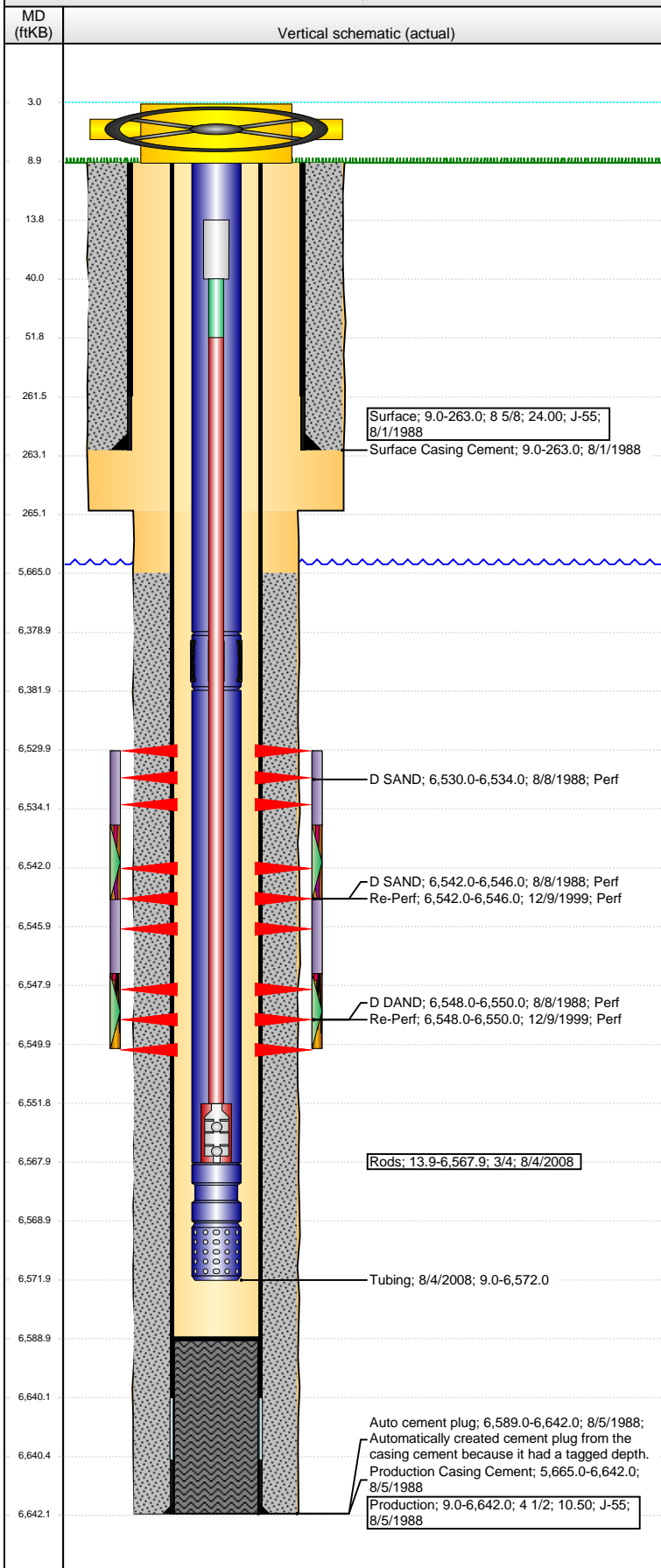


Well Name: LILLI UNIT 10-01

VERTICAL - ORIGINAL HOLE, 9/21/2015 8:03:44 AM



Well Header

API	Business Unit	District	Well Config
05-123-14012	DJ BASIN	25	VERTICAL
Original KB Elevation (ft)	KB - GL / MSL (ftKB)	Spud Date	P & A Date
4,823.00	9.00	8/1/1988	
Comment			

Directions To Well

Congressional Location

Quarter 1	Quarter 2	Quarter 3	Quarter 4	Section	Township	Twnshp N...	Range	Rng E/W Dir
	SE	NW	SE	1	8	N	59	W

Bottom Hole Location

North-South Distance (ft)	From N or S Line	East-West Distance (ft)	From E or W Line

Plug Back Total Depths

Date	Depth (ftKB)	Method	Com
8/8/1988	6,587.0	CASED HOLE LOG	DEPTH LOGGER FROM CBL
7/31/2008	6,589.0	TAG	CLEAN OUT

Wellbore Sections

Section Des	Size (in)	Act Top, MD (ftKB)	Act Btm, MD (ftKB)
SURFACE	12 1/4	9.0	265.0
PRODUCTION	7 7/8	265.0	6,642.0

Zone Statuses

Zone Name	Status Date	Status	Fluid Type	Job	Prod Method
D SAND	8/20/1988	PR		DRILLING/CO...	
D SAND	2/11/2013	SI			

Casing Strings

Surface, 263.0ftKB

Casing Description	Run Date	OD (in)	Wt/Len (l...	Grade	Top, MD (ft...	MD (ftKB)
Surface	8/1/1988	8 5/8	24.00	J-55	9.0	263.0

Production, 6,642.0ftKB

Casing Description	Run Date	OD (in)	Wt/Len (l...	Grade	Top, MD (ft...	MD (ftKB)
Production	8/5/1988	4 1/2	10.50	J-55	9.0	6,642.0

Cement

Description	Top Depth (ftKB)	Bottom Depth (ftKB)
Surface Casing Cement	9.0	263.0
Description	Top Depth (ftKB)	Bottom Depth (ftKB)
Production Casing Cement	5,665.0	6,642.0

Tubing Strings

Tubing Description	Run Date	String...	ID (in)	Wt (lb/ft)	Grade	Len (ft)	Set De...
Tubing	8/4/2008	2 3/8				6,563.00	

Tubing Components

Item Des	OD (in)	Wt (lb/ft)	Grade	Jts	Len (ft)	Btm (ftKB)	Btm (TVD) (ftKB)
Tubing	2 3/8			199	6,369.90	6,378.9	
TAC	2 3/8				3.00	6,381.9	
Tubing	2 3/8			6	186.00	6,567.9	
SN	2 3/8				1.10	6,569.0	
Perforated Nipple	2 3/8				3.00	6,572.0	

Rods & Pumps

Rod Description	Run Date	Set Depth (ftKB)
Rods	8/4/2008	6,567.9
Comment		

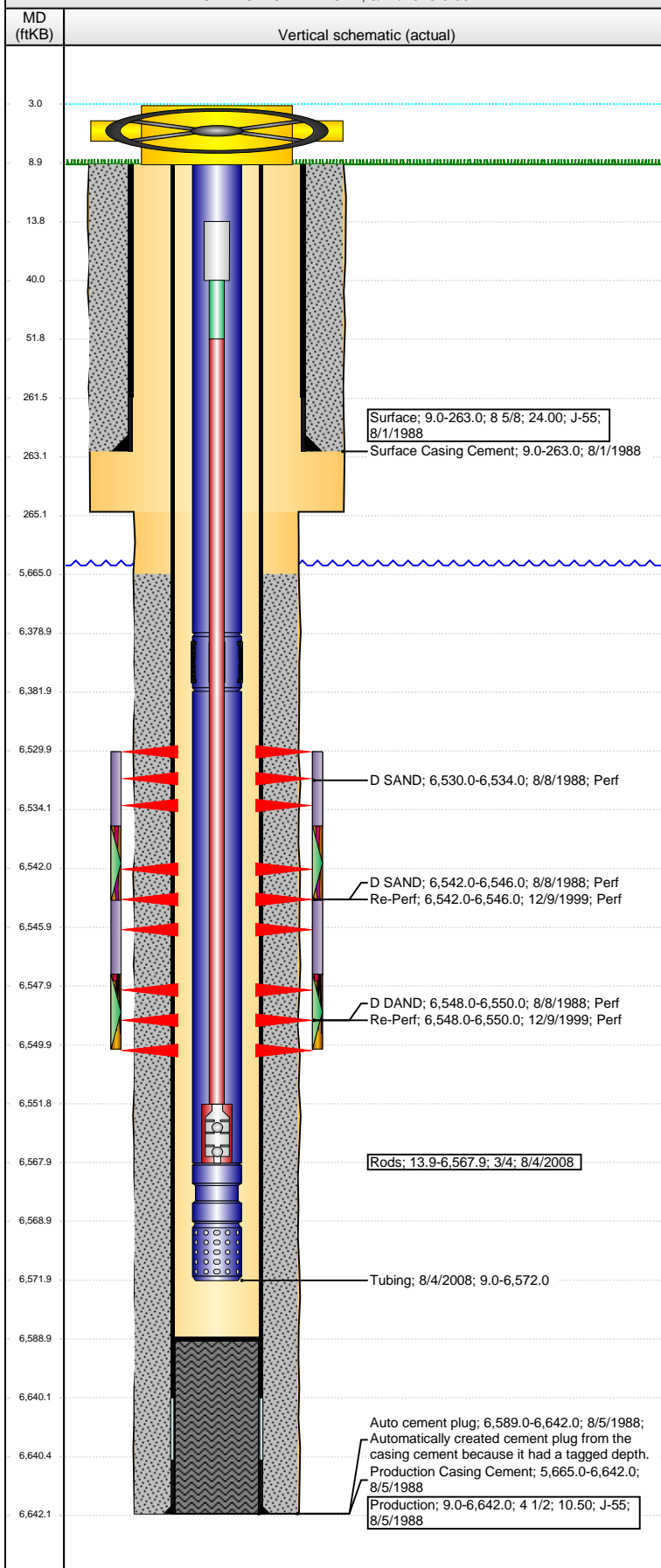
Item Description	OD Nominal (in)	Joints	Length (ft)
Polished Rod	1 1/4		26.00
Item Description	OD Nominal (in)	Joints	Length (ft)
2 x 6' x 3/4" Subs	3/4	2	12.00
Item Description	OD Nominal (in)	Joints	Length (ft)
Sucker Rods	3/4	260	6,500.00
Item Description	OD Nominal (in)	Joints	Length (ft)
2" x 1 1/2' x 16' Two-Stage	1 1/2		16.00

Perforation Data

Zone	Bnch/St g	Entered Shot Total	Top (ftKB)	Btm (ftKB)	Date
D SAND, ORIGINAL HOLE			6,530.00	6,534.00	8/8/1988
D SAND, ORIGINAL HOLE			6,542.00	6,546.00	8/8/1988
D SAND, ORIGINAL HOLE			6,542.00	6,546.00	12/9/1999

Well Name: LILLI UNIT 10-01

VERTICAL - ORIGINAL HOLE, 9/21/2015 8:03:47 AM



Perforation Data						
Zone		Bnch/St g	Entered Shot Total	Top (ftKB)	Btm (ftKB)	Date
D SAND, ORIGINAL HOLE				6,548.00	6,550.00	8/8/1988
D SAND, ORIGINAL HOLE				6,548.00	6,550.00	12/9/1999
Stimulations & Treatments						
Date		Zone		Primary Job Type		
8/10/1988		D SAND, ORIGINAL HOLE		DRILLING/COMPLETION - ORIGINAL		
Technical Result			Tech Result Details		Tech Result Note	
Comment						
1500 GALS HCL						
Date		Zone		Primary Job Type		
8/11/1988		D SAND, ORIGINAL HOLE		DRILLING/COMPLETION - ORIGINAL		
Technical Result			Tech Result Details		Tech Result Note	
Comment						
50,000# 20/40 SAND						
Date		Zone		Primary Job Type		
11/12/1997		D SAND, ORIGINAL HOLE				
Technical Result			Tech Result Details		Tech Result Note	
Comment						
1500 GALS 15% ACETIC ACID						
Other In Hole						
Run Date		Des		OD (in)	Top (ftKB)	Btm (ftKB)
Logs						
Date		Type		Top, MD (ftKB)	Btm, MD (ftKB)	
8/5/1988		BOREHOLE COMPANSATED SONIC		5,200.0	6,598.0	
8/5/1988		COMPENSATED NEUTRON		5,700.0	6,638.0	
8/5/1988		INDUCTION		264.0	6,636.0	
8/5/1988		MICROLOG		5,700.0	6,600.0	
8/5/1988		SDT-GR		5,200.0	6,627.0	
8/8/1988		CEMENT BOND		5,550.0	6,581.0	