

# Bayswater Exploration & Production, LLC

Well Name: **Albrighton L-10HN**

Surface Location: Albrighton Pad Sec.10-T6N-R64W

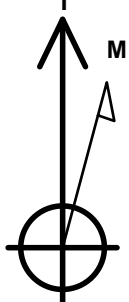
North American Datum 1983 , US State Plane 1983 , Colorado Northern Zone

Ground Elevation: 4807.0

+N/-S	+E/-W	Northing	Easting	Latitude	Longitude	Slot
0.0	0.0	1425198.14	3266648.58	40.496613	-104.541205	
RKB - 22.5' WELL @ 4829.5ft (RKB - 22.5')						

## WELLBORE TARGET DETAILS

Name	TVD	+N/-S	+E/-W	Shape
SHL 1170'FSL, 1257'FWL	1.0	0.0	0.0	Point
BHL 470'FNL, 2530'FWL	6859.5	3666.6	1317.3	Point
LPL 570'FSL, 2530'FWL	6869.5	-595.7	1264.1	Point



Azimuths to True North  
Magnetic North: 8.18°

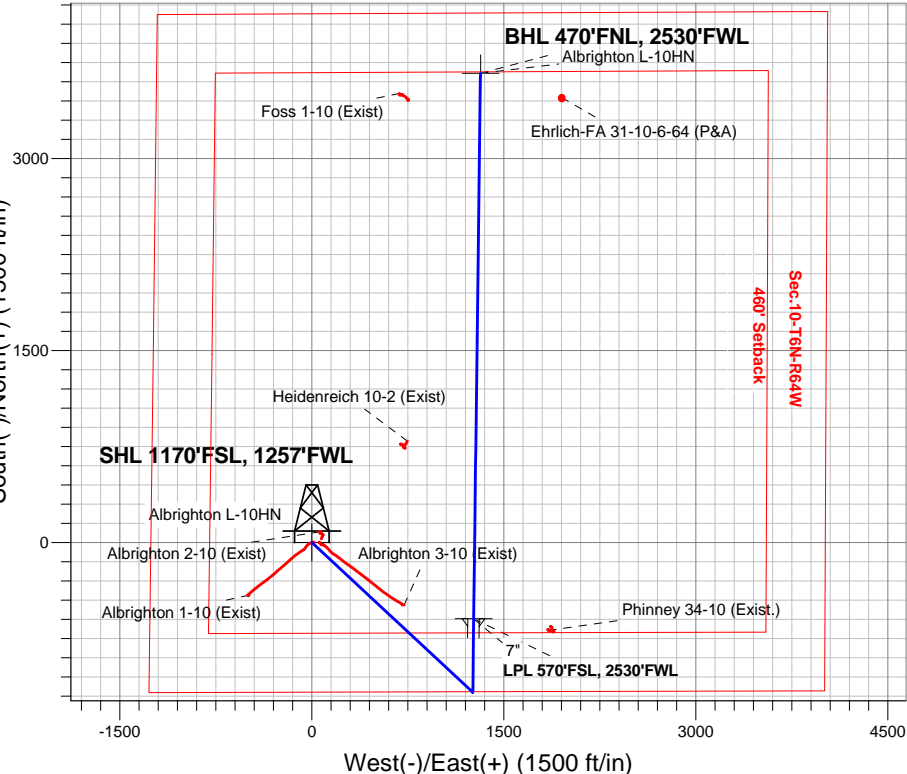
Magnetic Field  
Strength: 52761.1snT  
Dip Angle: 67.02°  
Date: 8/31/2015  
Model: IGRF2010

Albrighton Pad Sec.10-T6N-R64W  
Albrighton L-10HN  
Plan #2 (8-27-15)  
11:50, August 31 2015

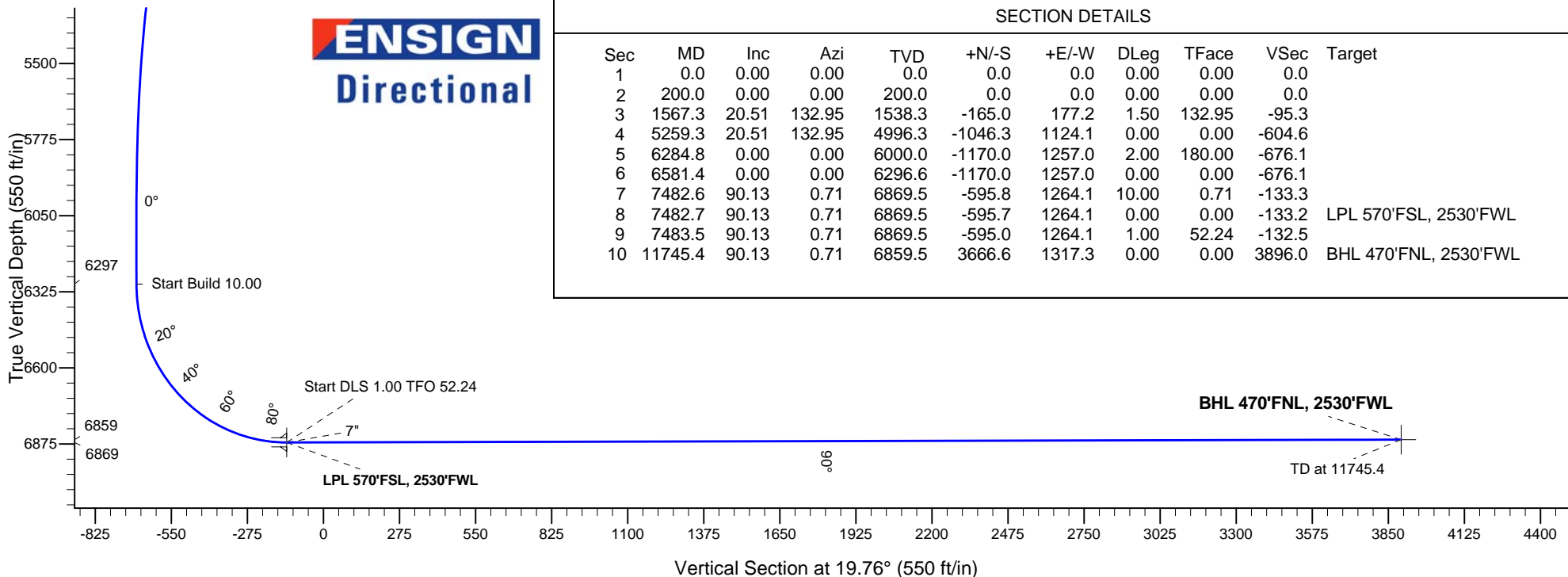
## ANNOTATIONS

TVD	MD	Annotation
200.0	200.0	KOP - Start Build 1.50
4996.3	5259.3	Start Drop -2.00
6296.6	6581.4	Start Build 10.00
6869.5	7482.7	Start DLS 1.00 TFO 52.24
6869.5	7483.5	Start 4261.9 hold at 7483.5 MD
6859.5	11745.4	TD at 11745.4

South(-)/North(+) (1500 ft/in)



**ENSIGN**  
Directional



## SECTION DETAILS

Sec	MD	Inc	Azi	TVD	+N/-S	+E/-W	DLeg	TFace	VSec	Target
1	0.0	0.00	0.00	0.0	0.0	0.0	0.00	0.00	0.0	
2	200.0	0.00	0.00	200.0	0.0	0.0	0.00	0.00	0.0	
3	1567.3	20.51	132.95	1538.3	-165.0	177.2	1.50	132.95	-95.3	
4	5259.3	20.51	132.95	4996.3	-1046.3	1124.1	0.00	0.00	-604.6	
5	6284.8	0.00	0.00	6000.0	-1170.0	1257.0	2.00	180.00	-676.1	
6	6581.4	0.00	0.00	6296.6	-1170.0	1257.0	0.00	0.00	-676.1	
7	7482.6	90.13	0.71	6869.5	-595.8	1264.1	10.00	0.71	-133.3	
8	7482.7	90.13	0.71	6869.5	-595.7	1264.1	0.00	0.00	-133.2	LPL 570'FSL, 2530'FWL
9	7483.5	90.13	0.71	6869.5	-595.0	1264.1	1.00	52.24	-132.5	
10	11745.4	90.13	0.71	6859.5	3666.6	1317.3	0.00	0.00	3896.0	BHL 470'FNL, 2530'FWL



# **Bayswater Exploration & Production, LLC**

**SEC.10-T6N-R64W**

**Albrighton Pad Sec.10-T6N-R64W**

**Albrighton L-10HN**

**Wellbore #1**

**Plan: Plan #2 (8-27-15)**

## **Standard Planning Report**

**31 August, 2015**



**BAYSWATER**  
**EXPLORATION & PRODUCTION, LLC**

<b>Database:</b>	EDMNEW	<b>Local Co-ordinate Reference:</b>	Well Albrighton L-10HN
<b>Company:</b>	Bayswater Exploration & Production, LLC	<b>TVD Reference:</b>	WELL @ 4829.5ft (RKB - 22.5')
<b>Project:</b>	SEC.10-T6N-R64W	<b>MD Reference:</b>	WELL @ 4829.5ft (RKB - 22.5')
<b>Site:</b>	Albrighton Pad Sec.10-T6N-R64W	<b>North Reference:</b>	True
<b>Well:</b>	Albrighton L-10HN	<b>Survey Calculation Method:</b>	Minimum Curvature
<b>Wellbore:</b>	Wellbore #1		
<b>Design:</b>	Plan #2 (8-27-15)		

<b>Project</b>	SEC.10-T6N-R64W, Weld County, Colorado		
<b>Map System:</b>	US State Plane 1983	<b>System Datum:</b>	Mean Sea Level
<b>Geo Datum:</b>	North American Datum 1983		Using Well Reference Point
<b>Map Zone:</b>	Colorado Northern Zone		Using geodetic scale factor

Site		Albrighton Pad Sec.10-T6N-R64W				
Site Position:		Northing:	1,425,196.03ft	Latitude:	40.496612	
From:	Lat/Long	Easting:	3,266,483.40ft	Longitude:	-104.541799	
Position Uncertainty:		0.0 ft	Slot Radius:	"	Grid Convergence:	0.62 °

Well	Albrighton L-10HN					
Well Position	+N-S	0.3 ft	Northing:	1,425,198.14 ft	Latitude:	40.496613
	+E-W	165.2 ft	Easting:	3,266,648.58 ft	Longitude:	-104.541205
Position Uncertainty		0.0 ft	Wellhead Elevation:	ft	Ground Level:	4,807.0 ft

<b>Wellbore</b>	Wellbore #1				
<b>Magnetics</b>	<b>Model Name</b>	<b>Sample Date</b>	<b>Declination (°)</b>	<b>Dip Angle (°)</b>	<b>Field Strength (nT)</b>
	IGRF2010	8/31/2015	8.18	67.02	52,761

<b>Design</b>	Plan #2 (8-27-15)			
<b>Audit Notes:</b>				
<b>Version:</b>	<b>Phase:</b>	PROTOTYPE	<b>Tie On Depth:</b>	0.0
<b>Vertical Section:</b>	<b>Depth From (TVD) (ft)</b>	<b>+N/-S (ft)</b>	<b>+E/-W (ft)</b>	<b>Direction (°)</b>
	0.0	0.0	0.0	19.76

<b>Plan Sections</b>										
Measured Depth (ft)	Inclination (°)	Azimuth (°)	Vertical Depth (ft)	+N/-S (ft)	+E/-W (ft)	Dogleg Rate (°/100ft)	Build Rate (°/100ft)	Turn Rate (°/100ft)	TFO (°)	Target
0.0	0.00	0.00	0.0	0.0	0.0	0.00	0.00	0.00	0.00	
200.0	0.00	0.00	200.0	0.0	0.0	0.00	0.00	0.00	0.00	
1,567.3	20.51	132.95	1,538.3	-165.0	177.2	1.50	1.50	0.00	132.95	
5,259.3	20.51	132.95	4,996.3	-1,046.3	1,124.1	0.00	0.00	0.00	0.00	
6,284.8	0.00	0.00	6,000.0	-1,170.0	1,257.0	2.00	-2.00	0.00	180.00	
6,581.4	0.00	0.00	6,296.6	-1,170.0	1,257.0	0.00	0.00	0.00	0.00	
7,482.6	90.13	0.71	6,869.5	-595.8	1,264.1	10.00	10.00	0.00	0.71	
7,482.7	90.13	0.71	6,869.5	-595.7	1,264.1	0.00	0.00	0.00	0.00	LPL 570'FSL, 2530'
7,483.5	90.13	0.71	6,869.5	-595.0	1,264.1	1.00	0.61	0.79	52.24	
11,745.4	90.13	0.71	6,859.5	3,666.6	1,317.3	0.00	0.00	0.00	0.00	BHL 470'FNL, 2530'

<b>Database:</b>	EDMNEW	<b>Local Co-ordinate Reference:</b>	Well Albrighton L-10HN
<b>Company:</b>	Bayswater Exploration & Production, LLC	<b>TVD Reference:</b>	WELL @ 4829.5ft (RKB - 22.5')
<b>Project:</b>	SEC.10-T6N-R64W	<b>MD Reference:</b>	WELL @ 4829.5ft (RKB - 22.5')
<b>Site:</b>	Albrighton Pad Sec.10-T6N-R64W	<b>North Reference:</b>	True
<b>Well:</b>	Albrighton L-10HN	<b>Survey Calculation Method:</b>	Minimum Curvature
<b>Wellbore:</b>	Wellbore #1		
<b>Design:</b>	Plan #2 (8-27-15)		

Planned Survey									
Measured Depth (ft)	Inclination (°)	Azimuth (°)	Vertical Depth (ft)	+N/-S (ft)	+E/-W (ft)	Vertical Section (ft)	Dogleg Rate (°/100ft)	Build Rate (°/100ft)	Turn Rate (°/100ft)
0.0	0.00	0.00	0.0	0.0	0.0	0.0	0.00	0.00	0.00
1.0	0.00	0.00	1.0	0.0	0.0	0.0	0.00	0.00	0.00
<b>SHL 1170'FSL, 1257'FWL</b>									
100.0	0.00	0.00	100.0	0.0	0.0	0.0	0.00	0.00	0.00
200.0	0.00	0.00	200.0	0.0	0.0	0.0	0.00	0.00	0.00
<b>KOP - Start Build 1.50</b>									
300.0	1.50	132.95	300.0	-0.9	1.0	-0.5	1.50	1.50	0.00
400.0	3.00	132.95	399.9	-3.6	3.8	-2.1	1.50	1.50	0.00
500.0	4.50	132.95	499.7	-8.0	8.6	-4.6	1.50	1.50	0.00
600.0	6.00	132.95	599.3	-14.3	15.3	-8.2	1.50	1.50	0.00
700.0	7.50	132.95	698.6	-22.3	23.9	-12.9	1.50	1.50	0.00
800.0	9.00	132.95	797.5	-32.0	34.4	-18.5	1.50	1.50	0.00
900.0	10.50	132.95	896.1	-43.6	46.8	-25.2	1.50	1.50	0.00
1,000.0	12.00	132.95	994.2	-56.9	61.1	-32.9	1.50	1.50	0.00
1,100.0	13.50	132.95	1,091.7	-71.9	77.3	-41.6	1.50	1.50	0.00
1,200.0	15.00	132.95	1,188.6	-88.7	95.3	-51.2	1.50	1.50	0.00
1,300.0	16.50	132.95	1,284.9	-107.2	115.1	-61.9	1.50	1.50	0.00
1,400.0	18.00	132.95	1,380.4	-127.4	136.8	-73.6	1.50	1.50	0.00
1,500.0	19.50	132.95	1,475.0	-149.3	160.4	-86.3	1.50	1.50	0.00
1,567.3	20.51	132.95	1,538.3	-165.0	177.2	-95.3	1.50	1.50	0.00
1,600.0	20.51	132.95	1,568.9	-172.8	185.6	-99.8	0.00	0.00	0.00
1,700.0	20.51	132.95	1,662.6	-196.6	211.3	-113.6	0.00	0.00	0.00
1,800.0	20.51	132.95	1,756.2	-220.5	236.9	-127.4	0.00	0.00	0.00
1,900.0	20.51	132.95	1,849.9	-244.4	262.5	-141.2	0.00	0.00	0.00
2,000.0	20.51	132.95	1,943.6	-268.2	288.2	-155.0	0.00	0.00	0.00
2,100.0	20.51	132.95	2,037.2	-292.1	313.8	-168.8	0.00	0.00	0.00
2,200.0	20.51	132.95	2,130.9	-316.0	339.5	-182.6	0.00	0.00	0.00
2,300.0	20.51	132.95	2,224.5	-339.9	365.1	-196.4	0.00	0.00	0.00
2,400.0	20.51	132.95	2,318.2	-363.7	390.8	-210.2	0.00	0.00	0.00
2,500.0	20.51	132.95	2,411.9	-387.6	416.4	-224.0	0.00	0.00	0.00
2,600.0	20.51	132.95	2,505.5	-411.5	442.1	-237.8	0.00	0.00	0.00
2,700.0	20.51	132.95	2,599.2	-435.3	467.7	-251.6	0.00	0.00	0.00
2,800.0	20.51	132.95	2,692.9	-459.2	493.4	-265.4	0.00	0.00	0.00
2,900.0	20.51	132.95	2,786.5	-483.1	519.0	-279.2	0.00	0.00	0.00
3,000.0	20.51	132.95	2,880.2	-507.0	544.7	-293.0	0.00	0.00	0.00
3,100.0	20.51	132.95	2,973.8	-530.8	570.3	-306.7	0.00	0.00	0.00
3,200.0	20.51	132.95	3,067.5	-554.7	595.9	-320.5	0.00	0.00	0.00
3,300.0	20.51	132.95	3,161.2	-578.6	621.6	-334.3	0.00	0.00	0.00
3,400.0	20.51	132.95	3,254.8	-602.4	647.2	-348.1	0.00	0.00	0.00
3,500.0	20.51	132.95	3,348.5	-626.3	672.9	-361.9	0.00	0.00	0.00
3,600.0	20.51	132.95	3,442.1	-650.2	698.5	-375.7	0.00	0.00	0.00
3,700.0	20.51	132.95	3,535.8	-674.1	724.2	-389.5	0.00	0.00	0.00
3,800.0	20.51	132.95	3,629.5	-697.9	749.8	-403.3	0.00	0.00	0.00
3,900.0	20.51	132.95	3,723.1	-721.8	775.5	-417.1	0.00	0.00	0.00
4,000.0	20.51	132.95	3,816.8	-745.7	801.1	-430.9	0.00	0.00	0.00
4,100.0	20.51	132.95	3,910.4	-769.5	826.8	-444.7	0.00	0.00	0.00
4,200.0	20.51	132.95	4,004.1	-793.4	852.4	-458.5	0.00	0.00	0.00
4,300.0	20.51	132.95	4,097.8	-817.3	878.1	-472.3	0.00	0.00	0.00
4,400.0	20.51	132.95	4,191.4	-841.2	903.7	-486.1	0.00	0.00	0.00
4,500.0	20.51	132.95	4,285.1	-865.0	929.3	-499.9	0.00	0.00	0.00
4,600.0	20.51	132.95	4,378.8	-888.9	955.0	-513.7	0.00	0.00	0.00
4,700.0	20.51	132.95	4,472.4	-912.8	980.6	-527.4	0.00	0.00	0.00
4,800.0	20.51	132.95	4,566.1	-936.6	1,006.3	-541.2	0.00	0.00	0.00
4,900.0	20.51	132.95	4,659.7	-960.5	1,031.9	-555.0	0.00	0.00	0.00

<b>Database:</b>	EDMNEW	<b>Local Co-ordinate Reference:</b>	Well Albrighton L-10HN
<b>Company:</b>	Bayswater Exploration & Production, LLC	<b>TVD Reference:</b>	WELL @ 4829.5ft (RKB - 22.5')
<b>Project:</b>	SEC.10-T6N-R64W	<b>MD Reference:</b>	WELL @ 4829.5ft (RKB - 22.5')
<b>Site:</b>	Albrighton Pad Sec.10-T6N-R64W	<b>North Reference:</b>	True
<b>Well:</b>	Albrighton L-10HN	<b>Survey Calculation Method:</b>	Minimum Curvature
<b>Wellbore:</b>	Wellbore #1		
<b>Design:</b>	Plan #2 (8-27-15)		

Planned Survey									
Measured Depth (ft)	Inclination (°)	Azimuth (°)	Vertical Depth (ft)	+N/-S (ft)	+E/-W (ft)	Vertical Section (ft)	Dogleg Rate (°/100ft)	Build Rate (°/100ft)	Turn Rate (°/100ft)
5,000.0	20.51	132.95	4,753.4	-984.4	1,057.6	-568.8	0.00	0.00	0.00
5,100.0	20.51	132.95	4,847.1	-1,008.2	1,083.2	-582.6	0.00	0.00	0.00
5,200.0	20.51	132.95	4,940.7	-1,032.1	1,108.9	-596.4	0.00	0.00	0.00
5,259.3	20.51	132.95	4,996.3	-1,046.3	1,124.1	-604.6	0.00	0.00	0.00
Start Drop -2.00									
5,300.0	19.70	132.95	5,034.5	-1,055.8	1,134.3	-610.1	2.00	-2.00	0.00
5,400.0	17.70	132.95	5,129.2	-1,077.6	1,157.8	-622.7	2.00	-2.00	0.00
5,500.0	15.70	132.95	5,225.0	-1,097.2	1,178.8	-634.0	2.00	-2.00	0.00
5,600.0	13.70	132.95	5,321.7	-1,114.5	1,197.4	-644.0	2.00	-2.00	0.00
5,700.0	11.70	132.95	5,419.3	-1,129.5	1,213.5	-652.7	2.00	-2.00	0.00
5,800.0	9.70	132.95	5,517.5	-1,142.1	1,227.0	-660.0	2.00	-2.00	0.00
5,900.0	7.70	132.95	5,616.4	-1,152.4	1,238.1	-665.9	2.00	-2.00	0.00
6,000.0	5.70	132.95	5,715.7	-1,160.4	1,246.6	-670.5	2.00	-2.00	0.00
6,100.0	3.70	132.95	5,815.3	-1,165.9	1,252.6	-673.7	2.00	-2.00	0.00
6,200.0	1.70	132.95	5,915.2	-1,169.1	1,256.1	-675.6	2.00	-2.00	0.00
6,284.8	0.00	0.00	6,000.0	-1,170.0	1,257.0	-676.1	2.00	-2.00	0.00
6,300.0	0.00	0.00	6,015.2	-1,170.0	1,257.0	-676.1	0.00	0.00	0.00
6,400.0	0.00	0.00	6,115.2	-1,170.0	1,257.0	-676.1	0.00	0.00	0.00
6,500.0	0.00	0.00	6,215.2	-1,170.0	1,257.0	-676.1	0.00	0.00	0.00
6,581.4	0.00	0.00	6,296.6	-1,170.0	1,257.0	-676.1	0.00	0.00	0.00
Start Build 10.00									
6,600.0	1.86	0.71	6,315.2	-1,169.7	1,257.0	-675.8	10.03	10.03	0.00
6,700.0	11.86	0.71	6,414.4	-1,157.8	1,257.2	-664.5	10.00	10.00	0.00
6,800.0	21.87	0.71	6,509.9	-1,128.8	1,257.5	-637.1	10.00	10.00	0.00
6,900.0	31.87	0.71	6,599.0	-1,083.7	1,258.1	-594.5	10.00	10.00	0.00
7,000.0	41.87	0.71	6,678.9	-1,023.7	1,258.8	-537.8	10.00	10.00	0.00
7,100.0	51.87	0.71	6,747.2	-950.9	1,259.7	-469.0	10.00	10.00	0.00
7,200.0	61.87	0.71	6,801.8	-867.2	1,260.7	-389.9	10.00	10.00	0.00
7,300.0	71.87	0.71	6,841.0	-775.4	1,261.9	-303.1	10.00	10.00	0.00
7,400.0	81.87	0.71	6,863.7	-678.2	1,263.1	-211.2	10.00	10.00	0.00
7,482.6	90.13	0.71	6,869.5	-595.8	1,264.1	-133.3	10.00	10.00	0.00
7,482.7	90.13	0.71	6,869.5	-595.7	1,264.1	-133.2	0.00	0.00	0.00
Start DLS 1.00 TFO 52.24 - 7" - LPL 570'FSL, 2530'FWL									
7,483.5	90.13	0.71	6,869.5	-594.9	1,264.1	-132.5	0.94	0.57	0.74
Start 4261.9 hold at 7483.5 MD									
7,500.0	90.13	0.71	6,869.5	-578.4	1,264.3	-116.9	0.00	0.00	0.00
7,600.0	90.13	0.71	6,869.2	-478.4	1,265.6	-22.4	0.00	0.00	0.00
7,700.0	90.13	0.71	6,869.0	-378.4	1,266.8	72.2	0.00	0.00	0.00
7,800.0	90.13	0.71	6,868.8	-278.5	1,268.1	166.7	0.00	0.00	0.00
7,900.0	90.13	0.71	6,868.5	-178.5	1,269.3	261.2	0.00	0.00	0.00
8,000.0	90.13	0.71	6,868.3	-78.5	1,270.6	355.7	0.00	0.00	0.00
8,100.0	90.13	0.71	6,868.1	21.5	1,271.8	450.3	0.00	0.00	0.00
8,200.0	90.13	0.71	6,867.8	121.5	1,273.1	544.8	0.00	0.00	0.00
8,300.0	90.13	0.71	6,867.6	221.5	1,274.3	639.3	0.00	0.00	0.00
8,400.0	90.13	0.71	6,867.3	321.5	1,275.5	733.8	0.00	0.00	0.00
8,500.0	90.13	0.71	6,867.1	421.5	1,276.8	828.4	0.00	0.00	0.00
8,600.0	90.13	0.71	6,866.9	521.5	1,278.0	922.9	0.00	0.00	0.00
8,700.0	90.13	0.71	6,866.6	621.5	1,279.3	1,017.4	0.00	0.00	0.00
8,800.0	90.13	0.71	6,866.4	721.5	1,280.5	1,111.9	0.00	0.00	0.00
8,900.0	90.13	0.71	6,866.2	821.5	1,281.8	1,206.5	0.00	0.00	0.00
9,000.0	90.13	0.71	6,865.9	921.4	1,283.0	1,301.0	0.00	0.00	0.00
9,100.0	90.13	0.71	6,865.7	1,021.4	1,284.3	1,395.5	0.00	0.00	0.00
9,200.0	90.13	0.71	6,865.5	1,121.4	1,285.5	1,490.0	0.00	0.00	0.00

<b>Database:</b>	EDMNEW	<b>Local Co-ordinate Reference:</b>	Well Albrighton L-10HN
<b>Company:</b>	Bayswater Exploration & Production, LLC	<b>TVD Reference:</b>	WELL @ 4829.5ft (RKB - 22.5')
<b>Project:</b>	SEC.10-T6N-R64W	<b>MD Reference:</b>	WELL @ 4829.5ft (RKB - 22.5')
<b>Site:</b>	Albrighton Pad Sec.10-T6N-R64W	<b>North Reference:</b>	True
<b>Well:</b>	Albrighton L-10HN	<b>Survey Calculation Method:</b>	Minimum Curvature
<b>Wellbore:</b>	Wellbore #1		
<b>Design:</b>	Plan #2 (8-27-15)		

Planned Survey										
Measured Depth (ft)	Inclination (°)	Azimuth (°)	Vertical Depth (ft)	+N/-S (ft)	+E/-W (ft)	Vertical Section (ft)	Dogleg Rate (°/100ft)	Build Rate (°/100ft)	Turn Rate (°/100ft)	
9,300.0	90.13	0.71	6,865.2	1,221.4	1,286.8	1,584.6	0.00	0.00	0.00	
9,400.0	90.13	0.71	6,865.0	1,321.4	1,288.0	1,679.1	0.00	0.00	0.00	
9,500.0	90.13	0.71	6,864.8	1,421.4	1,289.3	1,773.6	0.00	0.00	0.00	
9,600.0	90.13	0.71	6,864.5	1,521.4	1,290.5	1,868.1	0.00	0.00	0.00	
9,700.0	90.13	0.71	6,864.3	1,621.4	1,291.8	1,962.7	0.00	0.00	0.00	
9,800.0	90.13	0.71	6,864.1	1,721.4	1,293.0	2,057.2	0.00	0.00	0.00	
9,900.0	90.13	0.71	6,863.8	1,821.4	1,294.3	2,151.7	0.00	0.00	0.00	
10,000.0	90.13	0.71	6,863.6	1,921.4	1,295.5	2,246.2	0.00	0.00	0.00	
10,100.0	90.13	0.71	6,863.4	2,021.4	1,296.8	2,340.8	0.00	0.00	0.00	
10,200.0	90.13	0.71	6,863.1	2,121.3	1,298.0	2,435.3	0.00	0.00	0.00	
10,300.0	90.13	0.71	6,862.9	2,221.3	1,299.2	2,529.8	0.00	0.00	0.00	
10,400.0	90.13	0.71	6,862.7	2,321.3	1,300.5	2,624.3	0.00	0.00	0.00	
10,500.0	90.13	0.71	6,862.4	2,421.3	1,301.7	2,718.9	0.00	0.00	0.00	
10,600.0	90.13	0.71	6,862.2	2,521.3	1,303.0	2,813.4	0.00	0.00	0.00	
10,700.0	90.13	0.71	6,862.0	2,621.3	1,304.2	2,907.9	0.00	0.00	0.00	
10,800.0	90.13	0.71	6,861.7	2,721.3	1,305.5	3,002.4	0.00	0.00	0.00	
10,900.0	90.13	0.71	6,861.5	2,821.3	1,306.7	3,097.0	0.00	0.00	0.00	
11,000.0	90.13	0.71	6,861.2	2,921.3	1,308.0	3,191.5	0.00	0.00	0.00	
11,100.0	90.13	0.71	6,861.0	3,021.3	1,309.2	3,286.0	0.00	0.00	0.00	
11,200.0	90.13	0.71	6,860.8	3,121.3	1,310.5	3,380.5	0.00	0.00	0.00	
11,300.0	90.13	0.71	6,860.5	3,221.3	1,311.7	3,475.1	0.00	0.00	0.00	
11,400.0	90.13	0.71	6,860.3	3,321.3	1,313.0	3,569.6	0.00	0.00	0.00	
11,500.0	90.13	0.71	6,860.1	3,421.2	1,314.2	3,664.1	0.00	0.00	0.00	
11,600.0	90.13	0.71	6,859.8	3,521.2	1,315.5	3,758.6	0.00	0.00	0.00	
11,700.0	90.13	0.71	6,859.6	3,621.2	1,316.7	3,853.2	0.00	0.00	0.00	
11,745.4	90.13	0.71	6,859.5	3,666.6	1,317.3	3,896.0	0.00	0.00	0.00	
BHL 470'FNL, 2530'FWL										

Targets										
Target Name	Dip Angle (°)	Dip Dir. (°)	TVD (ft)	+N/-S (ft)	+E/-W (ft)	Northing (ft)	Easting (ft)	Latitude	Longitude	
- hit/miss target										
- Shape										
SHL 1170'FSL, 1257'F	0.00	0.00	1.0	0.0	0.0	1,425,198.18	3,266,648.58	40.496613	-104.541205	
- plan hits target center										
- Point										
BHL 470'FNL, 2530'F	0.00	0.00	6,859.5	3,666.6	1,317.3	1,428,878.61	3,267,926.09	40.506677	-104.536468	
- plan hits target center										
- Point										
LPL 570'FSL, 2530'F	0.00	0.00	6,869.5	-595.7	1,264.1	1,424,616.16	3,267,919.01	40.494978	-104.536660	
- plan hits target center										
- Point										

Casing Points						
Measured Depth (ft)	Vertical Depth (ft)	Name	Casing Diameter (")	Hole Diameter (")		
7,482.7	6,869.5	7"	7	7-1/2		

<b>Database:</b>	EDMNEW	<b>Local Co-ordinate Reference:</b>	Well Albrighton L-10HN
<b>Company:</b>	Bayswater Exploration & Production, LLC	<b>TVD Reference:</b>	WELL @ 4829.5ft (RKB - 22.5')
<b>Project:</b>	SEC.10-T6N-R64W	<b>MD Reference:</b>	WELL @ 4829.5ft (RKB - 22.5')
<b>Site:</b>	Albrighton Pad Sec.10-T6N-R64W	<b>North Reference:</b>	True
<b>Well:</b>	Albrighton L-10HN	<b>Survey Calculation Method:</b>	Minimum Curvature
<b>Wellbore:</b>	Wellbore #1		
<b>Design:</b>	Plan #2 (8-27-15)		

Plan Annotations				
Measured Depth (ft)	Vertical Depth (ft)	Local Coordinates		Comment
		+N/-S (ft)	+E/-W (ft)	
200.0	200.0	0.0	0.0	KOP - Start Build 1.50
5,259.3	4,996.3	-165.0	177.2	Start Drop -2.00
6,581.4	6,296.6	-1,046.3	1,124.1	Start Build 10.00
7,482.7	6,869.5	-1,170.0	1,257.0	Start DLS 1.00 TFO 52.24
7,483.5	6,869.5	-1,170.0	1,257.0	Start 4261.9 hold at 7483.5 MD
11,745.4	6,859.5	-595.7	1,264.1	TD at 11745.4