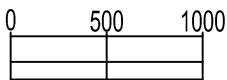
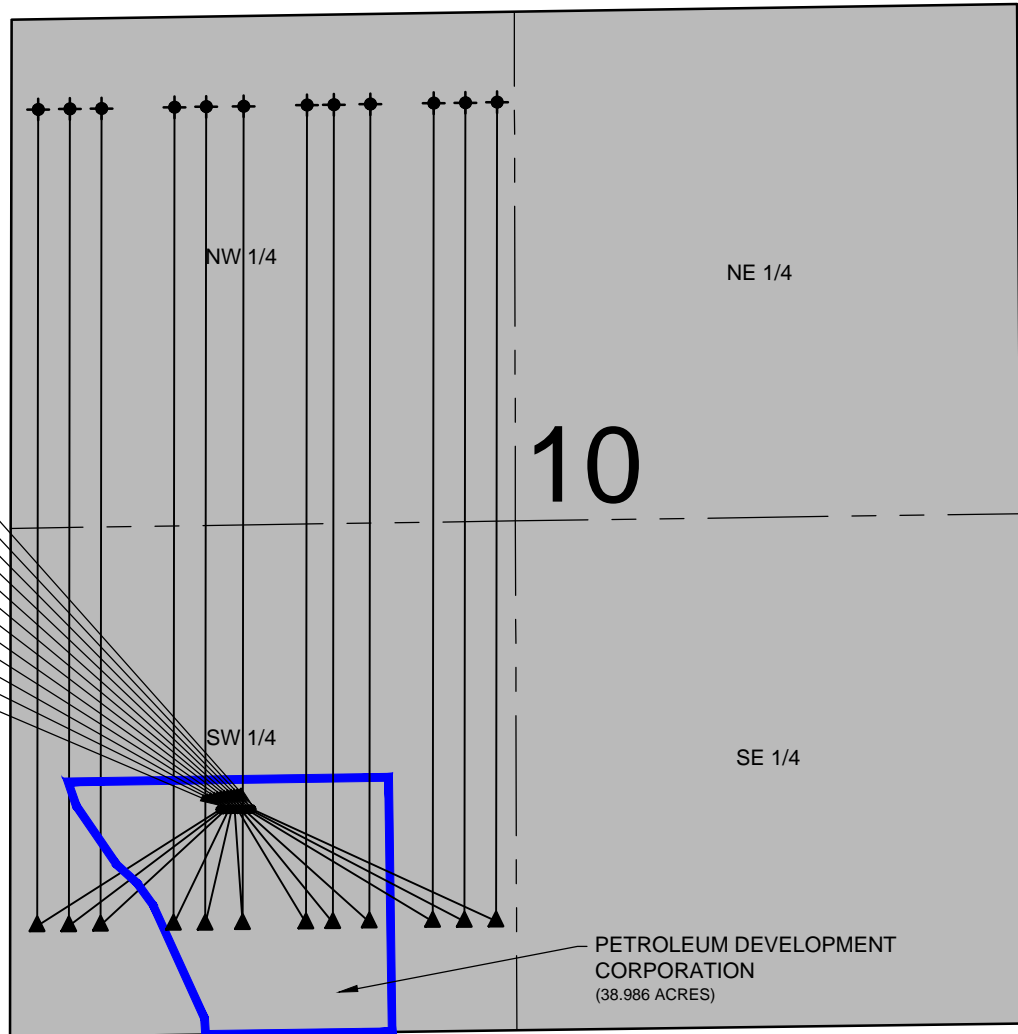


ALBRIGHTON 10-P PAD LEASE DRAWING

ALBRIGHTON L-10HN
ALBRIGHTON K-10HC
ALBRIGHTON J-10HN
ALBRIGHTON I-10HN
ALBRIGHTON H-10HC
ALBRIGHTON G-10HN
ALBRIGHTON F-10HN
ALBRIGHTON E-10HC
ALBRIGHTON D-10HN
ALBRIGHTON C-10HN
ALBRIGHTON B-10HC
ALBRIGHTON A-10HN



SCALE: 1"=1000'

LEGEND

- = PROPOSED WELL
- ▲ = LANDING POINT
- ⊙ = BOTTOM HOLE
- = LEASE LINES

NOTES:

ALBRIGHTON A-10HN TO BE AT 1170' FSL, 1092' FWL.
BOTTOM HOLE AT 470' FNL & 140' FWL.
ALBRIGHTON B-10HC TO BE AT 1170' FSL, 1107' FWL.
BOTTOM HOLE AT 470' FNL & 305' FWL.
ALBRIGHTON C-10HN TO BE AT 1170' FSL, 1122' FWL.
BOTTOM HOLE AT 470' FNL & 470' FWL.
ALBRIGHTON D-10HN TO BE AT 1170' FSL, 1137' FWL.
BOTTOM HOLE AT 470' FNL & 850' FWL.
ALBRIGHTON E-10HC TO BE AT 1170' FSL, 1152' FWL.
BOTTOM HOLE AT 470' FNL & 1015' FWL.
ALBRIGHTON F-10HN TO BE AT 1170' FSL, 1167' FWL.
BOTTOM HOLE AT 470' FNL & 1210' FWL.

ALBRIGHTON G-10HN TO BE AT 1170' FSL, 1182' FWL.
BOTTOM HOLE AT 470' FNL & 1540' FWL.
ALBRIGHTON H-10HC TO BE AT 1170' FSL, 1197' FWL.
BOTTOM HOLE AT 470' FNL & 1680' FWL.
ALBRIGHTON I-10HN TO BE AT 1170' FSL, 1212' FWL.
BOTTOM HOLE AT 470' FNL & 1870' FWL.
ALBRIGHTON J-10HN TO BE AT 1170' FSL, 1227' FWL.
BOTTOM HOLE AT 470' FNL & 2200' FWL.
ALBRIGHTON K-10HC TO BE AT 1170' FSL, 1242' FWL.
BOTTOM HOLE AT 470' FNL & 2365' FWL.
ALBRIGHTON L-10HN TO BE AT 1170' FSL, 1257' FWL.
BOTTOM HOLE AT 470' FNL & 2530' FWL.

PREPARED BY:



FIELD DATE:

06-08-15

DRAWING DATE:

09-09-15

BY:

KAD

CHECKED BY:

WDW

SITE NAME:

ALBRIGHTON 10-P PAD

SURFACE LOCATION:

SW 1/4 SW 1/4 SEC. 10, T6N, R64W, 6TH P.M.
WELD COUNTY, COLORADO

PREPARED FOR:

