

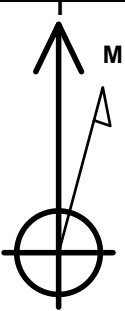
Bayswater Exploration & Production, LLC

Well Name: Albrighton I-10HN

Surface Location: Albrighton Pad Sec.10-T6N-R64W  
North American Datum 1983 , US State Plane 1983 , Colorado Northern Zone  
Ground Elevation: 4807.0  
+N/-S +E/-W Northing Easting Latitude Longitude Slot  
0.0 0.0 1425197.66 3266603.53 40.496613 -104.541367  
RKB - 22.5' WELL @ 4829.5ft (RKB - 22.5')

WELLBORE TARGET DETAILS

Name	TVD	+N/-S	+E/-W	Shape
SHL 1170'FSL, 1212'FWL	1.0	0.0	0.0	Point
BHL 470'FNL, 1870'FWL	6859.5	3663.6	702.2	Point
LPL 573'FSL, 1870'FWL	6869.5	-595.7	649.2	Point

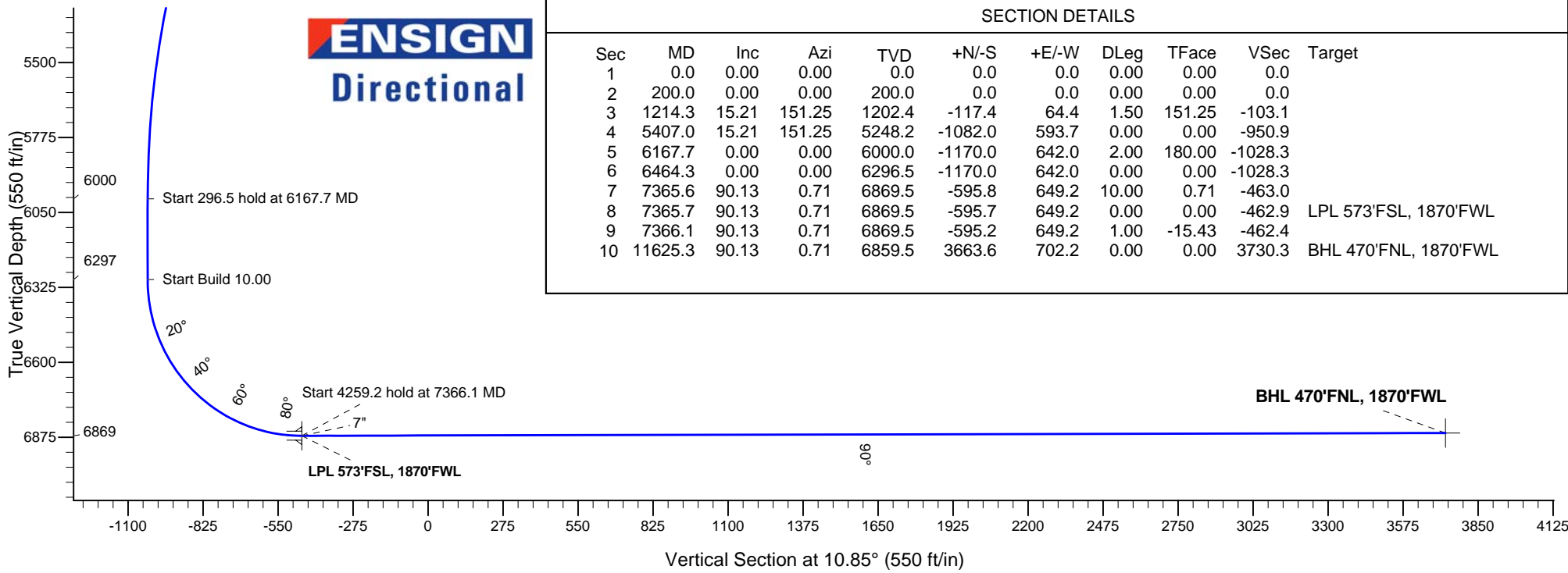
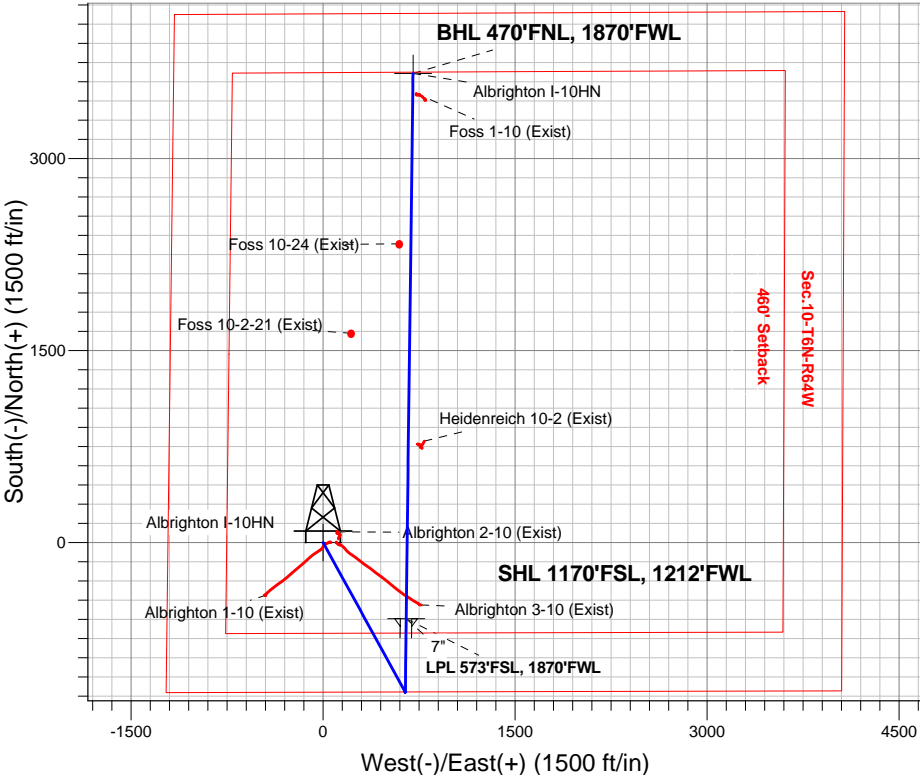


Azimuths to True North  
Magnetic North: 8.18°  
Magnetic Field  
Strength: 52761.0nT  
Dip Angle: 67.02°  
Date: 8/31/2015  
Model: IGRF2010

Albrighton Pad Sec.10-T6N-R64W  
Albrighton I-10HN  
Plan #2 (8-27-15)  
11:12, August 31 2015

ANNOTATIONS

TVD	MD	Annotation
200.0	200.0	KOP - Start Build 1.50
5248.2	5407.0	Start Drop -2.00
6000.0	6167.7	Start 296.5 hold at 6167.7 MD
6296.5	6464.3	Start Build 10.00
6869.5	7366.1	Start 4259.2 hold at 7366.1 MD
6859.5	11625.3	TD at 11625.3



SECTION DETAILS

Sec	MD	Inc	Azi	TVD	+N/-S	+E/-W	DLeg	TFace	VSec	Target
1	0.0	0.00	0.00	0.0	0.0	0.0	0.00	0.00	0.0	
2	200.0	0.00	0.00	200.0	0.0	0.0	0.00	0.00	0.0	
3	1214.3	15.21	151.25	1202.4	-117.4	64.4	1.50	151.25	-103.1	
4	5407.0	15.21	151.25	5248.2	-1082.0	593.7	0.00	0.00	-950.9	
5	6167.7	0.00	0.00	6000.0	-1170.0	642.0	2.00	180.00	-1028.3	
6	6464.3	0.00	0.00	6296.5	-1170.0	642.0	0.00	0.00	-1028.3	
7	7365.6	90.13	0.71	6869.5	-595.8	649.2	10.00	0.71	-463.0	
8	7365.7	90.13	0.71	6869.5	-595.7	649.2	0.00	0.00	-462.9	LPL 573'FSL, 1870'FWL
9	7366.1	90.13	0.71	6869.5	-595.2	649.2	1.00	-15.43	-462.4	
10	11625.3	90.13	0.71	6859.5	3663.6	702.2	0.00	0.00	3730.3	BHL 470'FNL, 1870'FWL



# **Bayswater Exploration & Production, LLC**

**SEC.10-T6N-R64W**

**Albrighton Pad Sec.10-T6N-R64W**

**Albrighton I-10HN**

**Wellbore #1**

**Plan: Plan #2 (8-27-15)**

## **Standard Planning Report**

**31 August, 2015**



**BAYSWATER**  
**EXPLORATION & PRODUCTION, LLC**

<b>Database:</b>	EDMNEW	<b>Local Co-ordinate Reference:</b>	Well Albrighton I-10HN
<b>Company:</b>	Bayswater Exploration & Production, LLC	<b>TVD Reference:</b>	WELL @ 4829.5ft (RKB - 22.5')
<b>Project:</b>	SEC.10-T6N-R64W	<b>MD Reference:</b>	WELL @ 4829.5ft (RKB - 22.5')
<b>Site:</b>	Albrighton Pad Sec.10-T6N-R64W	<b>North Reference:</b>	True
<b>Well:</b>	Albrighton I-10HN	<b>Survey Calculation Method:</b>	Minimum Curvature
<b>Wellbore:</b>	Wellbore #1		
<b>Design:</b>	Plan #2 (8-27-15)		

<b>Project</b>	SEC.10-T6N-R64W, Weld County, Colorado		
<b>Map System:</b>	US State Plane 1983	<b>System Datum:</b>	Mean Sea Level
<b>Geo Datum:</b>	North American Datum 1983		Using Well Reference Point
<b>Map Zone:</b>	Colorado Northern Zone		Using geodetic scale factor

Site		Albrighton Pad Sec.10-T6N-R64W				
Site Position:		Northing:	1,425,196.03ft	Latitude:	40.496612	
From:	Lat/Long	Easting:	3,266,483.40ft	Longitude:	-104.541799	
Position Uncertainty:		0.0 ft	Slot Radius:	"	Grid Convergence:	0.62 °

Well	Albrighton I-10HN					
Well Position	+N-S	0.3 ft	Northing:	1,425,197.66 ft	Latitude:	40.496613
	+E-W	120.1 ft	Easting:	3,266,603.53 ft	Longitude:	-104.541367
Position Uncertainty		0.0 ft	Wellhead Elevation:	ft	Ground Level:	4,807.0 ft

<b>Wellbore</b>	Wellbore #1				
<b>Magnetics</b>	<b>Model Name</b>	<b>Sample Date</b>	<b>Declination (°)</b>	<b>Dip Angle (°)</b>	<b>Field Strength (nT)</b>
	IGRF2010	8/31/2015	8.18	67.02	52,761

<b>Design</b>	Plan #2 (8-27-15)			
<b>Audit Notes:</b>				
<b>Version:</b>	<b>Phase:</b>	PROTOTYPE	<b>Tie On Depth:</b>	0.0
<b>Vertical Section:</b>	<b>Depth From (TVD) (ft)</b>	<b>+N/-S (ft)</b>	<b>+E/-W (ft)</b>	<b>Direction (°)</b>
	0.0	0.0	0.0	10.85

<b>Plan Sections</b>										
Measured Depth (ft)	Inclination (°)	Azimuth (°)	Vertical Depth (ft)	+N/-S (ft)	+E/-W (ft)	Dogleg Rate (°/100ft)	Build Rate (°/100ft)	Turn Rate (°/100ft)	TFO (°)	Target
0.0	0.00	0.00	0.0	0.0	0.0	0.00	0.00	0.00	0.00	
200.0	0.00	0.00	200.0	0.0	0.0	0.00	0.00	0.00	0.00	
1,214.3	15.21	151.25	1,202.4	-117.4	64.4	1.50	1.50	0.00	151.25	
5,407.0	15.21	151.25	5,248.2	-1,082.0	593.7	0.00	0.00	0.00	0.00	
6,167.7	0.00	0.00	6,000.0	-1,170.0	642.0	2.00	-2.00	0.00	180.00	
6,464.3	0.00	0.00	6,296.5	-1,170.0	642.0	0.00	0.00	0.00	0.00	
7,365.6	90.13	0.71	6,869.5	-595.8	649.2	10.00	10.00	0.00	0.71	
7,365.7	90.13	0.71	6,869.5	-595.7	649.2	0.00	0.00	0.00	0.00	LPL 573'FSL, 1870'
7,366.1	90.13	0.71	6,869.5	-595.2	649.2	1.00	0.96	-0.27	-15.43	
11,625.3	90.13	0.71	6,859.5	3,663.6	702.2	0.00	0.00	0.00	0.00	BHL 470'FNL, 1870'

<b>Database:</b>	EDMNEW	<b>Local Co-ordinate Reference:</b>	Well Albrighton I-10HN
<b>Company:</b>	Bayswater Exploration & Production, LLC	<b>TVD Reference:</b>	WELL @ 4829.5ft (RKB - 22.5')
<b>Project:</b>	SEC.10-T6N-R64W	<b>MD Reference:</b>	WELL @ 4829.5ft (RKB - 22.5')
<b>Site:</b>	Albrighton Pad Sec.10-T6N-R64W	<b>North Reference:</b>	True
<b>Well:</b>	Albrighton I-10HN	<b>Survey Calculation Method:</b>	Minimum Curvature
<b>Wellbore:</b>	Wellbore #1		
<b>Design:</b>	Plan #2 (8-27-15)		

Planned Survey									
Measured Depth (ft)	Inclination (°)	Azimuth (°)	Vertical Depth (ft)	+N/-S (ft)	+E/-W (ft)	Vertical Section (ft)	Dogleg Rate (°/100ft)	Build Rate (°/100ft)	Turn Rate (°/100ft)
0.0	0.00	0.00	0.0	0.0	0.0	0.0	0.00	0.00	0.00
1.0	0.00	0.00	1.0	0.0	0.0	0.0	0.00	0.00	0.00
<b>SHL 1170'FSL, 1212'FWL</b>									
100.0	0.00	0.00	100.0	0.0	0.0	0.0	0.00	0.00	0.00
200.0	0.00	0.00	200.0	0.0	0.0	0.0	0.00	0.00	0.00
<b>KOP - Start Build 1.50</b>									
300.0	1.50	151.25	300.0	-1.1	0.6	-1.0	1.50	1.50	0.00
400.0	3.00	151.25	399.9	-4.6	2.5	-4.0	1.50	1.50	0.00
500.0	4.50	151.25	499.7	-10.3	5.7	-9.1	1.50	1.50	0.00
600.0	6.00	151.25	599.3	-18.3	10.1	-16.1	1.50	1.50	0.00
700.0	7.50	151.25	698.6	-28.6	15.7	-25.2	1.50	1.50	0.00
800.0	9.00	151.25	797.5	-41.2	22.6	-36.2	1.50	1.50	0.00
900.0	10.50	151.25	896.1	-56.1	30.8	-49.3	1.50	1.50	0.00
1,000.0	12.00	151.25	994.2	-73.2	40.2	-64.3	1.50	1.50	0.00
1,100.0	13.50	151.25	1,091.7	-92.5	50.8	-81.3	1.50	1.50	0.00
1,200.0	15.00	151.25	1,188.6	-114.1	62.6	-100.3	1.50	1.50	0.00
1,214.3	15.21	151.25	1,202.4	-117.4	64.4	-103.1	1.50	1.50	0.00
1,300.0	15.21	151.25	1,285.1	-137.1	75.2	-120.5	0.00	0.00	0.00
1,400.0	15.21	151.25	1,381.6	-160.1	87.8	-140.7	0.00	0.00	0.00
1,500.0	15.21	151.25	1,478.1	-183.1	100.5	-160.9	0.00	0.00	0.00
1,600.0	15.21	151.25	1,574.6	-206.1	113.1	-181.1	0.00	0.00	0.00
1,700.0	15.21	151.25	1,671.1	-229.1	125.7	-201.4	0.00	0.00	0.00
1,800.0	15.21	151.25	1,767.6	-252.1	138.3	-221.6	0.00	0.00	0.00
1,900.0	15.21	151.25	1,864.1	-275.1	151.0	-241.8	0.00	0.00	0.00
2,000.0	15.21	151.25	1,960.6	-298.1	163.6	-262.0	0.00	0.00	0.00
2,100.0	15.21	151.25	2,057.1	-321.1	176.2	-282.2	0.00	0.00	0.00
2,200.0	15.21	151.25	2,153.6	-344.1	188.8	-302.5	0.00	0.00	0.00
2,300.0	15.21	151.25	2,250.1	-367.2	201.5	-322.7	0.00	0.00	0.00
2,400.0	15.21	151.25	2,346.6	-390.2	214.1	-342.9	0.00	0.00	0.00
2,500.0	15.21	151.25	2,443.1	-413.2	226.7	-363.1	0.00	0.00	0.00
2,600.0	15.21	151.25	2,539.6	-436.2	239.3	-383.3	0.00	0.00	0.00
2,700.0	15.21	151.25	2,636.1	-459.2	252.0	-403.6	0.00	0.00	0.00
2,800.0	15.21	151.25	2,732.5	-482.2	264.6	-423.8	0.00	0.00	0.00
2,900.0	15.21	151.25	2,829.0	-505.2	277.2	-444.0	0.00	0.00	0.00
3,000.0	15.21	151.25	2,925.5	-528.2	289.8	-464.2	0.00	0.00	0.00
3,100.0	15.21	151.25	3,022.0	-551.2	302.5	-484.4	0.00	0.00	0.00
3,200.0	15.21	151.25	3,118.5	-574.2	315.1	-504.7	0.00	0.00	0.00
3,300.0	15.21	151.25	3,215.0	-597.2	327.7	-524.9	0.00	0.00	0.00
3,400.0	15.21	151.25	3,311.5	-620.2	340.3	-545.1	0.00	0.00	0.00
3,500.0	15.21	151.25	3,408.0	-643.2	353.0	-565.3	0.00	0.00	0.00
3,600.0	15.21	151.25	3,504.5	-666.2	365.6	-585.5	0.00	0.00	0.00
3,700.0	15.21	151.25	3,601.0	-689.2	378.2	-605.7	0.00	0.00	0.00
3,800.0	15.21	151.25	3,697.5	-712.3	390.8	-626.0	0.00	0.00	0.00
3,900.0	15.21	151.25	3,794.0	-735.3	403.5	-646.2	0.00	0.00	0.00
4,000.0	15.21	151.25	3,890.5	-758.3	416.1	-666.4	0.00	0.00	0.00
4,100.0	15.21	151.25	3,987.0	-781.3	428.7	-686.6	0.00	0.00	0.00
4,200.0	15.21	151.25	4,083.5	-804.3	441.3	-706.8	0.00	0.00	0.00
4,300.0	15.21	151.25	4,180.0	-827.3	453.9	-727.1	0.00	0.00	0.00
4,400.0	15.21	151.25	4,276.5	-850.3	466.6	-747.3	0.00	0.00	0.00
4,500.0	15.21	151.25	4,373.0	-873.3	479.2	-767.5	0.00	0.00	0.00
4,600.0	15.21	151.25	4,469.5	-896.3	491.8	-787.7	0.00	0.00	0.00
4,700.0	15.21	151.25	4,566.0	-919.3	504.4	-807.9	0.00	0.00	0.00
4,800.0	15.21	151.25	4,662.5	-942.3	517.1	-828.2	0.00	0.00	0.00
4,900.0	15.21	151.25	4,758.9	-965.3	529.7	-848.4	0.00	0.00	0.00

<b>Database:</b>	EDMNEW	<b>Local Co-ordinate Reference:</b>	Well Albrighton I-10HN
<b>Company:</b>	Bayswater Exploration & Production, LLC	<b>TVD Reference:</b>	WELL @ 4829.5ft (RKB - 22.5')
<b>Project:</b>	SEC.10-T6N-R64W	<b>MD Reference:</b>	WELL @ 4829.5ft (RKB - 22.5')
<b>Site:</b>	Albrighton Pad Sec.10-T6N-R64W	<b>North Reference:</b>	True
<b>Well:</b>	Albrighton I-10HN	<b>Survey Calculation Method:</b>	Minimum Curvature
<b>Wellbore:</b>	Wellbore #1		
<b>Design:</b>	Plan #2 (8-27-15)		

Planned Survey									
Measured Depth (ft)	Inclination (°)	Azimuth (°)	Vertical Depth (ft)	+N/-S (ft)	+E/-W (ft)	Vertical Section (ft)	Dogleg Rate (°/100ft)	Build Rate (°/100ft)	Turn Rate (°/100ft)
5,000.0	15.21	151.25	4,855.4	-988.3	542.3	-868.6	0.00	0.00	0.00
5,100.0	15.21	151.25	4,951.9	-1,011.3	554.9	-888.8	0.00	0.00	0.00
5,200.0	15.21	151.25	5,048.4	-1,034.3	567.6	-909.0	0.00	0.00	0.00
5,300.0	15.21	151.25	5,144.9	-1,057.4	580.2	-929.3	0.00	0.00	0.00
5,400.0	15.21	151.25	5,241.4	-1,080.4	592.8	-949.5	0.00	0.00	0.00
5,407.0	15.21	151.25	5,248.2	-1,082.0	593.7	-950.9	0.00	0.00	0.00
<b>Start Drop -2.00</b>									
5,500.0	13.35	151.25	5,338.3	-1,102.1	604.7	-968.6	2.00	-2.00	0.00
5,600.0	11.35	151.25	5,436.0	-1,120.8	615.0	-985.1	2.00	-2.00	0.00
5,700.0	9.35	151.25	5,534.3	-1,136.6	623.7	-998.9	2.00	-2.00	0.00
5,800.0	7.35	151.25	5,633.3	-1,149.3	630.7	-1,010.1	2.00	-2.00	0.00
5,900.0	5.35	151.25	5,732.7	-1,159.0	636.0	-1,018.6	2.00	-2.00	0.00
6,000.0	3.35	151.25	5,832.4	-1,165.7	639.6	-1,024.5	2.00	-2.00	0.00
6,100.0	1.35	151.25	5,932.3	-1,169.3	641.6	-1,027.6	2.00	-2.00	0.00
6,167.7	0.00	151.25	6,000.0	-1,170.0	642.0	-1,028.3	2.00	-2.00	0.00
<b>Start 296.5 hold at 6167.7 MD</b>									
6,200.0	0.00	0.00	6,032.3	-1,170.0	642.0	-1,028.3	0.00	0.00	0.00
6,300.0	0.00	0.00	6,132.3	-1,170.0	642.0	-1,028.3	0.00	0.00	0.00
6,400.0	0.00	0.00	6,232.3	-1,170.0	642.0	-1,028.3	0.00	0.00	0.00
6,464.3	0.00	0.00	6,296.6	-1,170.0	642.0	-1,028.3	0.00	0.00	0.00
<b>Start Build 10.00</b>									
6,500.0	3.57	0.71	6,332.2	-1,168.9	642.0	-1,027.2	10.01	10.01	0.00
6,600.0	13.57	0.71	6,431.0	-1,154.0	642.2	-1,012.5	10.00	10.00	0.00
6,700.0	23.57	0.71	6,525.7	-1,122.2	642.6	-981.2	10.00	10.00	0.00
6,800.0	33.57	0.71	6,613.4	-1,074.4	643.2	-934.2	10.00	10.00	0.00
6,900.0	43.57	0.71	6,691.5	-1,012.2	644.0	-872.9	10.00	10.00	0.00
7,000.0	53.57	0.71	6,757.6	-937.3	644.9	-799.2	10.00	10.00	0.00
7,100.0	63.57	0.71	6,809.6	-852.1	646.0	-715.3	10.00	10.00	0.00
7,200.0	73.57	0.71	6,846.1	-759.1	647.1	-623.7	10.00	10.00	0.00
7,300.0	83.57	0.71	6,865.9	-661.2	648.3	-527.4	10.00	10.00	0.00
7,365.6	90.13	0.71	6,869.5	-595.8	649.2	-463.0	10.00	10.00	0.00
7,365.7	90.13	0.71	6,869.5	-595.7	649.2	-462.9	0.00	0.00	0.00
<b>7" - LPL 573'FSL, 1870'FWL</b>									
7,366.1	90.13	0.71	6,869.5	-595.3	649.2	-462.4	1.00	0.96	-0.27
<b>Start 4259.2 hold at 7366.1 MD</b>									
7,400.0	90.13	0.71	6,869.4	-561.4	649.6	-429.1	0.00	0.00	0.00
7,500.0	90.13	0.71	6,869.2	-461.4	650.8	-330.6	0.00	0.00	0.00
7,600.0	90.13	0.71	6,868.9	-361.4	652.1	-232.2	0.00	0.00	0.00
7,700.0	90.13	0.71	6,868.7	-261.4	653.3	-133.8	0.00	0.00	0.00
7,800.0	90.13	0.71	6,868.5	-161.4	654.6	-35.3	0.00	0.00	0.00
7,900.0	90.13	0.71	6,868.2	-61.4	655.8	63.1	0.00	0.00	0.00
8,000.0	90.13	0.71	6,868.0	38.6	657.1	161.6	0.00	0.00	0.00
8,100.0	90.13	0.71	6,867.8	138.6	658.3	260.0	0.00	0.00	0.00
8,200.0	90.13	0.71	6,867.5	238.6	659.5	358.4	0.00	0.00	0.00
8,300.0	90.13	0.71	6,867.3	338.6	660.8	456.9	0.00	0.00	0.00
8,400.0	90.13	0.71	6,867.1	438.6	662.0	555.3	0.00	0.00	0.00
8,500.0	90.13	0.71	6,866.8	538.5	663.3	653.8	0.00	0.00	0.00
8,600.0	90.13	0.71	6,866.6	638.5	664.5	752.2	0.00	0.00	0.00
8,700.0	90.13	0.71	6,866.4	738.5	665.8	850.6	0.00	0.00	0.00
8,800.0	90.13	0.71	6,866.1	838.5	667.0	949.1	0.00	0.00	0.00
8,900.0	90.13	0.71	6,865.9	938.5	668.2	1,047.5	0.00	0.00	0.00
9,000.0	90.13	0.71	6,865.7	1,038.5	669.5	1,146.0	0.00	0.00	0.00
9,100.0	90.13	0.71	6,865.4	1,138.5	670.7	1,244.4	0.00	0.00	0.00

<b>Database:</b>	EDMNEW	<b>Local Co-ordinate Reference:</b>	Well Albrighton I-10HN
<b>Company:</b>	Bayswater Exploration & Production, LLC	<b>TVD Reference:</b>	WELL @ 4829.5ft (RKB - 22.5')
<b>Project:</b>	SEC.10-T6N-R64W	<b>MD Reference:</b>	WELL @ 4829.5ft (RKB - 22.5')
<b>Site:</b>	Albrighton Pad Sec.10-T6N-R64W	<b>North Reference:</b>	True
<b>Well:</b>	Albrighton I-10HN	<b>Survey Calculation Method:</b>	Minimum Curvature
<b>Wellbore:</b>	Wellbore #1		
<b>Design:</b>	Plan #2 (8-27-15)		

Planned Survey									
Measured Depth (ft)	Inclination (°)	Azimuth (°)	Vertical Depth (ft)	+N/-S (ft)	+E/-W (ft)	Vertical Section (ft)	Dogleg Rate (°/100ft)	Build Rate (°/100ft)	Turn Rate (°/100ft)
9,200.0	90.13	0.71	6,865.2	1,238.5	672.0	1,342.8	0.00	0.00	0.00
9,300.0	90.13	0.71	6,865.0	1,338.5	673.2	1,441.3	0.00	0.00	0.00
9,400.0	90.13	0.71	6,864.7	1,438.5	674.5	1,539.7	0.00	0.00	0.00
9,500.0	90.13	0.71	6,864.5	1,538.5	675.7	1,638.1	0.00	0.00	0.00
9,600.0	90.13	0.71	6,864.3	1,638.5	677.0	1,736.6	0.00	0.00	0.00
9,700.0	90.13	0.71	6,864.0	1,738.5	678.2	1,835.0	0.00	0.00	0.00
9,800.0	90.13	0.71	6,863.8	1,838.4	679.4	1,933.5	0.00	0.00	0.00
9,900.0	90.13	0.71	6,863.6	1,938.4	680.7	2,031.9	0.00	0.00	0.00
10,000.0	90.13	0.71	6,863.3	2,038.4	681.9	2,130.3	0.00	0.00	0.00
10,100.0	90.13	0.71	6,863.1	2,138.4	683.2	2,228.8	0.00	0.00	0.00
10,200.0	90.13	0.71	6,862.8	2,238.4	684.4	2,327.2	0.00	0.00	0.00
10,300.0	90.13	0.71	6,862.6	2,338.4	685.7	2,425.7	0.00	0.00	0.00
10,400.0	90.13	0.71	6,862.4	2,438.4	686.9	2,524.1	0.00	0.00	0.00
10,500.0	90.13	0.71	6,862.1	2,538.4	688.2	2,622.5	0.00	0.00	0.00
10,600.0	90.13	0.71	6,861.9	2,638.4	689.4	2,721.0	0.00	0.00	0.00
10,700.0	90.13	0.71	6,861.7	2,738.4	690.6	2,819.4	0.00	0.00	0.00
10,800.0	90.13	0.71	6,861.4	2,838.4	691.9	2,917.9	0.00	0.00	0.00
10,900.0	90.13	0.71	6,861.2	2,938.4	693.1	3,016.3	0.00	0.00	0.00
11,000.0	90.13	0.71	6,861.0	3,038.3	694.4	3,114.7	0.00	0.00	0.00
11,100.0	90.13	0.71	6,860.7	3,138.3	695.6	3,213.2	0.00	0.00	0.00
11,200.0	90.13	0.71	6,860.5	3,238.3	696.9	3,311.6	0.00	0.00	0.00
11,300.0	90.13	0.71	6,860.3	3,338.3	698.1	3,410.1	0.00	0.00	0.00
11,400.0	90.13	0.71	6,860.0	3,438.3	699.4	3,508.5	0.00	0.00	0.00
11,500.0	90.13	0.71	6,859.8	3,538.3	700.6	3,606.9	0.00	0.00	0.00
11,600.0	90.13	0.71	6,859.6	3,638.3	701.8	3,705.4	0.00	0.00	0.00
11,625.3	90.13	0.71	6,859.5	3,663.6	702.2	3,730.3	0.00	0.00	0.00
TD at 11625.3 - BHL 470'FNL, 1870'FWL									

Targets									
Target Name	Dip Angle (°)	Dip Dir. (°)	TVD (ft)	+N/-S (ft)	+E/-W (ft)	Northing (ft)	Easting (ft)	Latitude	Longitude
- hit/miss target									
- Shape									
SHL 1170'FSL, 1212'F	0.00	0.00	1.0	0.0	0.0	1,425,197.69	3,266,603.53	40.496613	-104.541367
- plan hits target center									
- Point									
BHL 470'FNL, 1870'F	0.00	0.00	6,859.5	3,663.6	702.2	1,428,868.53	3,267,266.02	40.506669	-104.538842
- plan hits target center									
- Point									
LPL 573'FSL, 1870'F	0.00	0.00	6,869.5	-595.7	649.2	1,424,609.04	3,267,259.07	40.494978	-104.539033
- plan hits target center									
- Point									

Casing Points					
Measured Depth (ft)	Vertical Depth (ft)	Name	Casing Diameter (")	Hole Diameter (")	
7,365.7	6,869.5	7"	7	7-1/2	

<b>Database:</b>	EDMNEW	<b>Local Co-ordinate Reference:</b>	Well Albrighton I-10HN
<b>Company:</b>	Bayswater Exploration & Production, LLC	<b>TVD Reference:</b>	WELL @ 4829.5ft (RKB - 22.5')
<b>Project:</b>	SEC.10-T6N-R64W	<b>MD Reference:</b>	WELL @ 4829.5ft (RKB - 22.5')
<b>Site:</b>	Albrighton Pad Sec.10-T6N-R64W	<b>North Reference:</b>	True
<b>Well:</b>	Albrighton I-10HN	<b>Survey Calculation Method:</b>	Minimum Curvature
<b>Wellbore:</b>	Wellbore #1		
<b>Design:</b>	Plan #2 (8-27-15)		

Plan Annotations				
Measured Depth (ft)	Vertical Depth (ft)	Local Coordinates		Comment
		+N/-S (ft)	+E/-W (ft)	
200.0	200.0	0.0	0.0	KOP - Start Build 1.50
5,407.0	5,248.2	-117.4	64.4	Start Drop -2.00
6,167.7	6,000.0	-1,082.0	593.7	Start 296.5 hold at 6167.7 MD
6,464.3	6,296.5	-1,170.0	642.0	Start Build 10.00
7,366.1	6,869.5	-1,170.0	642.0	Start 4259.2 hold at 7366.1 MD
11,625.3	6,859.5	-595.2	649.2	TD at 11625.3