

# Bayswater Exploration & Production, LLC

Well Name: **Albrighton B-10HC**

Surface Location: Albrighton Pad Sec.10-T6N-R64W

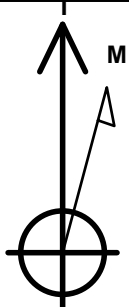
North American Datum 1983 , US State Plane 1983 , Colorado Northern Zone

Ground Elevation: 4807.0

+N/-S	+E/-W	Northing	Easting	Latitude	Longitude	Slot
0.0	0.0	1425196.18	3266498.41	40.496612	-104.541745	
RKB - 22.5' WELL @ 4829.5ft (RKB - 22.5')						

## WELLBORE TARGET DETAILS

Name	TVD	+N/-S	+E/-W	Shape
SHL 1170'FSL, 1107'FWL	1.0	0.0	0.0	Point
BHL 470'FNL, 305'FWL	7024.5	3656.3	-757.8	Point
LPL 575'FSL, 305'FWL	7024.5	-597.1	-811.0	Point



Azimuths to True North  
Magnetic North: 8.18°

Magnetic Field  
Strength: 52761.9nT  
Dip Angle: 67.02°  
Date: 8/28/2015  
Model: IGRF2010

Albrighton Pad Sec.10-T6N-R64W

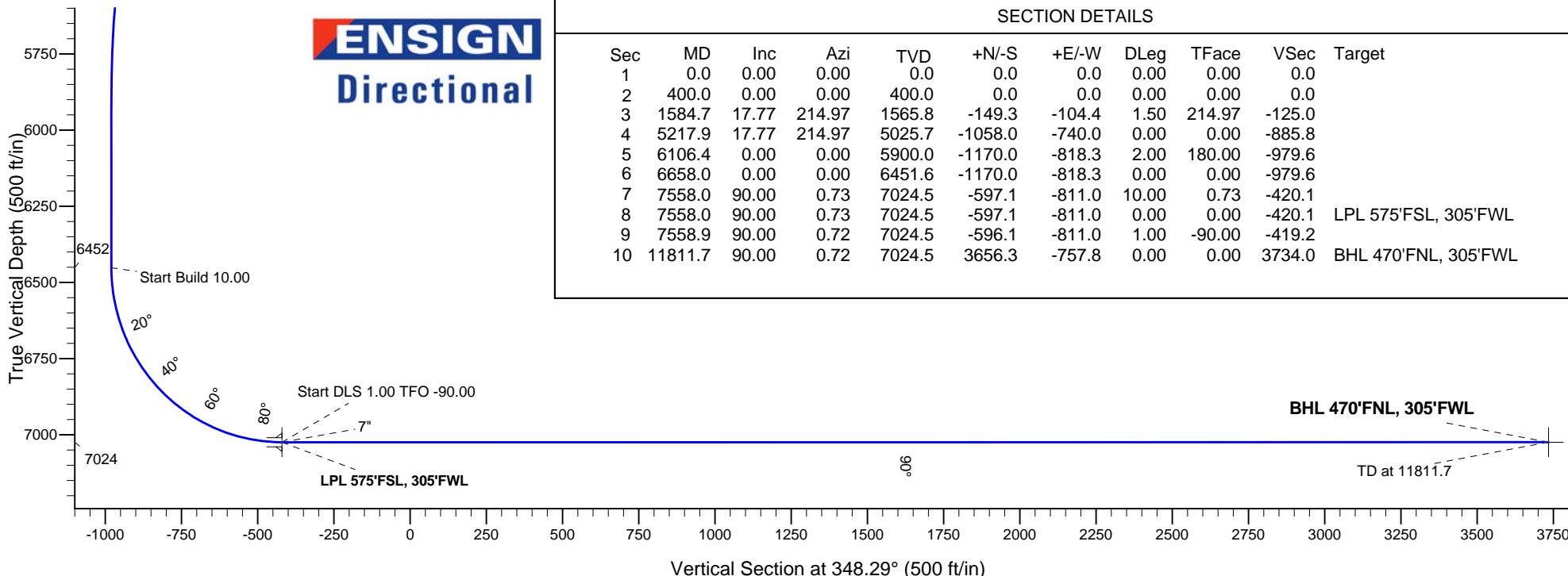
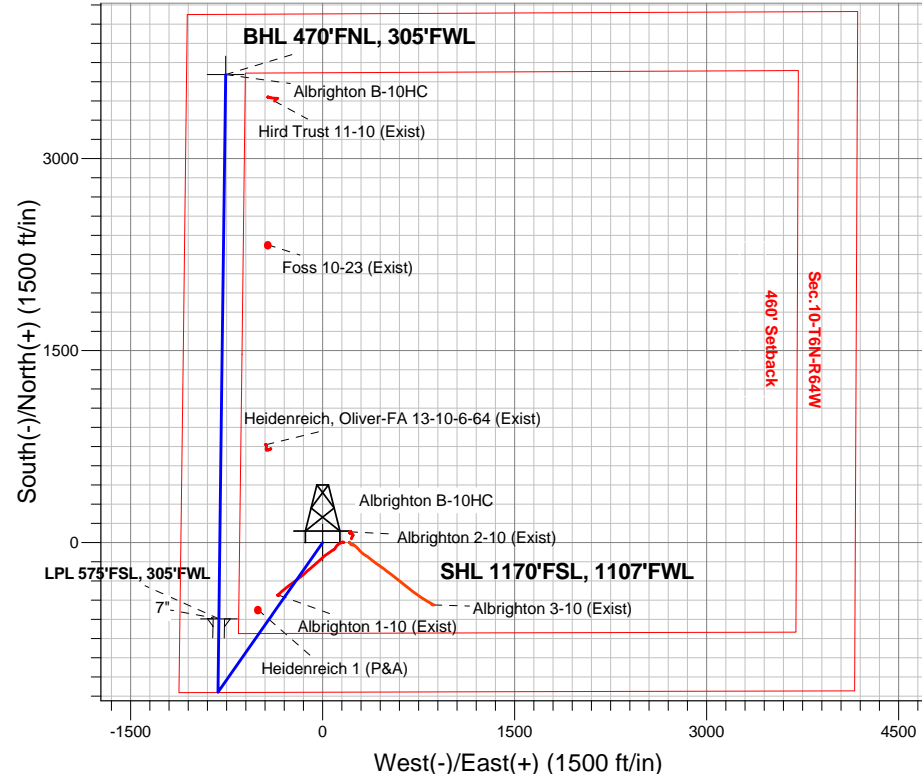
Albrighton B-10HC

Plan #2 (8-27-15)

12:41, August 28 2015

## ANNOTATIONS

TVD	MD	Annotation
400.0	400.0	KOP - Start Build 1.50
5025.7	5217.9	Start Drop -2.00
6451.6	6658.0	Start Build 10.00
7024.5	7558.0	Start DLS 1.00 TFO -90.00
7024.5	7558.9	Start 4252.8 hold at 7558.9 MD
7024.5	11811.7	TD at 11811.7



## SECTION DETAILS

Sec	MD	Inc	Azi	TVD	+N/-S	+E/-W	DLeg	TFace	VSec	Target
1	0.0	0.00	0.00	0.0	0.0	0.0	0.00	0.00	0.0	
2	400.0	0.00	0.00	400.0	0.0	0.0	0.00	0.00	0.0	
3	1584.7	17.77	214.97	1565.8	-149.3	-104.4	1.50	214.97	-125.0	
4	5217.9	17.77	214.97	5025.7	-1058.0	-740.0	0.00	0.00	-885.8	
5	6106.4	0.00	0.00	5900.0	-1170.0	-818.3	2.00	180.00	-979.6	
6	6658.0	0.00	0.00	6451.6	-1170.0	-818.3	0.00	0.00	-979.6	
7	7558.0	90.00	0.73	7024.5	-597.1	-811.0	10.00	0.73	-420.1	
8	7558.0	90.00	0.73	7024.5	-597.1	-811.0	0.00	0.00	-420.1	LPL 575'FSL, 305'FWL
9	7558.9	90.00	0.72	7024.5	-596.1	-811.0	1.00	-90.00	-419.2	
10	11811.7	90.00	0.72	7024.5	3656.3	-757.8	0.00	0.00	3734.0	BHL 470'FNL, 305'FWL



# **Bayswater Exploration & Production, LLC**

**SEC.10-T6N-R64W**

**Albrighton Pad Sec.10-T6N-R64W**

**Albrighton B-10HC**

**Wellbore #1**

**Plan: Plan #2 (8-27-15)**

## **Standard Planning Report**

**28 August, 2015**



**BAYSWATER**  
**EXPLORATION & PRODUCTION, LLC**

<b>Database:</b>	EDMNEW	<b>Local Co-ordinate Reference:</b>	Well Albrighton B-10HC
<b>Company:</b>	Bayswater Exploration & Production, LLC	<b>TVD Reference:</b>	WELL @ 4829.5ft (RKB - 22.5')
<b>Project:</b>	SEC.10-T6N-R64W	<b>MD Reference:</b>	WELL @ 4829.5ft (RKB - 22.5')
<b>Site:</b>	Albrighton Pad Sec.10-T6N-R64W	<b>North Reference:</b>	True
<b>Well:</b>	Albrighton B-10HC	<b>Survey Calculation Method:</b>	Minimum Curvature
<b>Wellbore:</b>	Wellbore #1		
<b>Design:</b>	Plan #2 (8-27-15)		

<b>Project</b>	SEC.10-T6N-R64W, Weld County, Colorado		
<b>Map System:</b>	US State Plane 1983	<b>System Datum:</b>	Mean Sea Level
<b>Geo Datum:</b>	North American Datum 1983		Using Well Reference Point
<b>Map Zone:</b>	Colorado Northern Zone		Using geodetic scale factor

Site		Albrighton Pad Sec.10-T6N-R64W				
Site Position:		Northing:	1,425,196.03ft	Latitude:	40.496612	
From:	Lat/Long	Easting:	3,266,483.40ft	Longitude:	-104.541799	
Position Uncertainty:		0.0 ft	Slot Radius:	"	Grid Convergence:	0.62 °

Well	Albrighton B-10HC					
Well Position	+N-S	0.0 ft	Northing:	1,425,196.18 ft	Latitude:	40.496612
	+E-W	15.0 ft	Easting:	3,266,498.41 ft	Longitude:	-104.541745
Position Uncertainty		0.0 ft	Wellhead Elevation:	ft	Ground Level:	4,807.0 ft

<b>Wellbore</b>	Wellbore #1				
<b>Magnetics</b>	<b>Model Name</b>	<b>Sample Date</b>	<b>Declination (°)</b>	<b>Dip Angle (°)</b>	<b>Field Strength (nT)</b>
	IGRF2010	8/28/2015	8.18	67.02	52,762

<b>Design</b>	Plan #2 (8-27-15)			
<b>Audit Notes:</b>				
<b>Version:</b>	<b>Phase:</b>	PROTOTYPE	<b>Tie On Depth:</b>	0.0
<b>Vertical Section:</b>	<b>Depth From (TVD) (ft)</b>	<b>+N/-S (ft)</b>	<b>+E/-W (ft)</b>	<b>Direction (°)</b>
	0.0	0.0	0.0	348.29

<b>Plan Sections</b>										
Measured Depth (ft)	Inclination (°)	Azimuth (°)	Vertical Depth (ft)	+N/-S (ft)	+E/-W (ft)	Dogleg Rate (°/100ft)	Build Rate (°/100ft)	Turn Rate (°/100ft)	TFO (°)	Target
0.0	0.00	0.00	0.0	0.0	0.0	0.00	0.00	0.00	0.00	
400.0	0.00	0.00	400.0	0.0	0.0	0.00	0.00	0.00	0.00	
1,584.7	17.77	214.97	1,565.8	-149.3	-104.4	1.50	1.50	0.00	214.97	
5,217.9	17.77	214.97	5,025.7	-1,058.0	-740.0	0.00	0.00	0.00	0.00	
6,106.4	0.00	0.00	5,900.0	-1,170.0	-818.3	2.00	-2.00	0.00	180.00	
6,658.0	0.00	0.00	6,451.6	-1,170.0	-818.3	0.00	0.00	0.00	0.00	
7,558.0	90.00	0.73	7,024.5	-597.1	-811.0	10.00	10.00	0.00	0.73	
7,558.0	90.00	0.73	7,024.5	-597.1	-811.0	0.00	0.00	0.00	0.00	LPL 575'FSL, 305'F
7,558.9	90.00	0.72	7,024.5	-596.1	-811.0	1.00	0.00	-1.00	-90.00	
11,811.7	90.00	0.72	7,024.5	3,656.3	-757.8	0.00	0.00	0.00	0.00	BHL 470'FNL, 305'F

<b>Database:</b>	EDMNEW	<b>Local Co-ordinate Reference:</b>	Well Albrighton B-10HC
<b>Company:</b>	Bayswater Exploration & Production, LLC	<b>TVD Reference:</b>	WELL @ 4829.5ft (RKB - 22.5')
<b>Project:</b>	SEC.10-T6N-R64W	<b>MD Reference:</b>	WELL @ 4829.5ft (RKB - 22.5')
<b>Site:</b>	Albrighton Pad Sec.10-T6N-R64W	<b>North Reference:</b>	True
<b>Well:</b>	Albrighton B-10HC	<b>Survey Calculation Method:</b>	Minimum Curvature
<b>Wellbore:</b>	Wellbore #1		
<b>Design:</b>	Plan #2 (8-27-15)		

Planned Survey									
Measured Depth (ft)	Inclination (°)	Azimuth (°)	Vertical Depth (ft)	+N/-S (ft)	+E/-W (ft)	Vertical Section (ft)	Dogleg Rate (°/100ft)	Build Rate (°/100ft)	Turn Rate (°/100ft)
0.0	0.00	0.00	0.0	0.0	0.0	0.0	0.00	0.00	0.00
1.0	0.00	0.00	1.0	0.0	0.0	0.0	0.00	0.00	0.00
<b>SHL 1170'FSL, 1107'FWL</b>									
100.0	0.00	0.00	100.0	0.0	0.0	0.0	0.00	0.00	0.00
200.0	0.00	0.00	200.0	0.0	0.0	0.0	0.00	0.00	0.00
300.0	0.00	0.00	300.0	0.0	0.0	0.0	0.00	0.00	0.00
400.0	0.00	0.00	400.0	0.0	0.0	0.0	0.00	0.00	0.00
<b>KOP - Start Build 1.50</b>									
500.0	1.50	214.97	500.0	-1.1	-0.8	-0.9	1.50	1.50	0.00
600.0	3.00	214.97	599.9	-4.3	-3.0	-3.6	1.50	1.50	0.00
700.0	4.50	214.97	699.7	-9.6	-6.7	-8.1	1.50	1.50	0.00
800.0	6.00	214.97	799.3	-17.1	-12.0	-14.4	1.50	1.50	0.00
900.0	7.50	214.97	898.6	-26.8	-18.7	-22.4	1.50	1.50	0.00
1,000.0	9.00	214.97	997.5	-38.5	-27.0	-32.3	1.50	1.50	0.00
1,100.0	10.50	214.97	1,096.1	-52.4	-36.7	-43.9	1.50	1.50	0.00
1,200.0	12.00	214.97	1,194.2	-68.4	-47.8	-57.3	1.50	1.50	0.00
1,300.0	13.50	214.97	1,291.7	-86.5	-60.5	-72.4	1.50	1.50	0.00
1,400.0	15.00	214.97	1,388.6	-106.7	-74.6	-89.3	1.50	1.50	0.00
1,500.0	16.50	214.97	1,484.9	-128.9	-90.2	-107.9	1.50	1.50	0.00
1,584.7	17.77	214.97	1,565.8	-149.3	-104.4	-125.0	1.50	1.50	0.00
1,600.0	17.77	214.97	1,580.4	-153.2	-107.1	-128.2	0.00	0.00	0.00
1,700.0	17.77	214.97	1,675.6	-178.2	-124.6	-149.2	0.00	0.00	0.00
1,800.0	17.77	214.97	1,770.8	-203.2	-142.1	-170.1	0.00	0.00	0.00
1,900.0	17.77	214.97	1,866.1	-228.2	-159.6	-191.1	0.00	0.00	0.00
2,000.0	17.77	214.97	1,961.3	-253.2	-177.1	-212.0	0.00	0.00	0.00
2,100.0	17.77	214.97	2,056.5	-278.2	-194.6	-232.9	0.00	0.00	0.00
2,200.0	17.77	214.97	2,151.7	-303.2	-212.1	-253.9	0.00	0.00	0.00
2,300.0	17.77	214.97	2,247.0	-328.2	-229.6	-274.8	0.00	0.00	0.00
2,400.0	17.77	214.97	2,342.2	-353.2	-247.1	-295.8	0.00	0.00	0.00
2,500.0	17.77	214.97	2,437.4	-378.3	-264.6	-316.7	0.00	0.00	0.00
2,600.0	17.77	214.97	2,532.7	-403.3	-282.0	-337.6	0.00	0.00	0.00
2,700.0	17.77	214.97	2,627.9	-428.3	-299.5	-358.6	0.00	0.00	0.00
2,800.0	17.77	214.97	2,723.1	-453.3	-317.0	-379.5	0.00	0.00	0.00
2,900.0	17.77	214.97	2,818.3	-478.3	-334.5	-400.5	0.00	0.00	0.00
3,000.0	17.77	214.97	2,913.6	-503.3	-352.0	-421.4	0.00	0.00	0.00
3,100.0	17.77	214.97	3,008.8	-528.3	-369.5	-442.3	0.00	0.00	0.00
3,200.0	17.77	214.97	3,104.0	-553.3	-387.0	-463.3	0.00	0.00	0.00
3,300.0	17.77	214.97	3,199.3	-578.3	-404.5	-484.2	0.00	0.00	0.00
3,400.0	17.77	214.97	3,294.5	-603.3	-422.0	-505.2	0.00	0.00	0.00
3,500.0	17.77	214.97	3,389.7	-628.4	-439.5	-526.1	0.00	0.00	0.00
3,600.0	17.77	214.97	3,484.9	-653.4	-457.0	-547.0	0.00	0.00	0.00
3,700.0	17.77	214.97	3,580.2	-678.4	-474.5	-568.0	0.00	0.00	0.00
3,800.0	17.77	214.97	3,675.4	-703.4	-491.9	-588.9	0.00	0.00	0.00
3,900.0	17.77	214.97	3,770.6	-728.4	-509.4	-609.9	0.00	0.00	0.00
4,000.0	17.77	214.97	3,865.9	-753.4	-526.9	-630.8	0.00	0.00	0.00
4,100.0	17.77	214.97	3,961.1	-778.4	-544.4	-651.7	0.00	0.00	0.00
4,200.0	17.77	214.97	4,056.3	-803.4	-561.9	-672.7	0.00	0.00	0.00
4,300.0	17.77	214.97	4,151.6	-828.4	-579.4	-693.6	0.00	0.00	0.00
4,400.0	17.77	214.97	4,246.8	-853.4	-596.9	-714.5	0.00	0.00	0.00
4,500.0	17.77	214.97	4,342.0	-878.4	-614.4	-735.5	0.00	0.00	0.00
4,600.0	17.77	214.97	4,437.2	-903.5	-631.9	-756.4	0.00	0.00	0.00
4,700.0	17.77	214.97	4,532.5	-928.5	-649.4	-777.4	0.00	0.00	0.00
4,800.0	17.77	214.97	4,627.7	-953.5	-666.9	-798.3	0.00	0.00	0.00
4,900.0	17.77	214.97	4,722.9	-978.5	-684.4	-819.2	0.00	0.00	0.00

<b>Database:</b>	EDMNEW	<b>Local Co-ordinate Reference:</b>	Well Albrighton B-10HC
<b>Company:</b>	Bayswater Exploration & Production, LLC	<b>TVD Reference:</b>	WELL @ 4829.5ft (RKB - 22.5')
<b>Project:</b>	SEC.10-T6N-R64W	<b>MD Reference:</b>	WELL @ 4829.5ft (RKB - 22.5')
<b>Site:</b>	Albrighton Pad Sec.10-T6N-R64W	<b>North Reference:</b>	True
<b>Well:</b>	Albrighton B-10HC	<b>Survey Calculation Method:</b>	Minimum Curvature
<b>Wellbore:</b>	Wellbore #1		
<b>Design:</b>	Plan #2 (8-27-15)		

Planned Survey									
Measured Depth (ft)	Inclination (°)	Azimuth (°)	Vertical Depth (ft)	+N/-S (ft)	+E/-W (ft)	Vertical Section (ft)	Dogleg Rate (°/100ft)	Build Rate (°/100ft)	Turn Rate (°/100ft)
5,000.0	17.77	214.97	4,818.2	-1,003.5	-701.8	-840.2	0.00	0.00	0.00
5,100.0	17.77	214.97	4,913.4	-1,028.5	-719.3	-861.1	0.00	0.00	0.00
5,200.0	17.77	214.97	5,008.6	-1,053.5	-736.8	-882.1	0.00	0.00	0.00
5,217.9	17.77	214.97	5,025.7	-1,058.0	-740.0	-885.8	0.00	0.00	0.00
Start Drop -2.00									
5,300.0	16.13	214.97	5,104.2	-1,077.6	-753.7	-902.2	2.00	-2.00	0.00
5,400.0	14.13	214.97	5,200.7	-1,099.0	-768.6	-920.1	2.00	-2.00	0.00
5,500.0	12.13	214.97	5,298.1	-1,117.6	-781.7	-935.7	2.00	-2.00	0.00
5,600.0	10.13	214.97	5,396.2	-1,133.4	-792.7	-949.0	2.00	-2.00	0.00
5,700.0	8.13	214.97	5,494.9	-1,146.4	-801.8	-959.8	2.00	-2.00	0.00
5,800.0	6.13	214.97	5,594.2	-1,156.6	-808.9	-968.4	2.00	-2.00	0.00
5,900.0	4.13	214.97	5,693.8	-1,163.9	-814.0	-974.5	2.00	-2.00	0.00
6,000.0	2.13	214.97	5,793.6	-1,168.4	-817.2	-978.2	2.00	-2.00	0.00
6,100.0	0.13	214.97	5,893.6	-1,170.0	-818.3	-979.6	2.00	-2.00	0.00
6,106.4	0.00	0.00	5,900.0	-1,170.0	-818.3	-979.6	2.00	-2.00	0.00
6,200.0	0.00	0.00	5,993.6	-1,170.0	-818.3	-979.6	0.00	0.00	0.00
6,300.0	0.00	0.00	6,093.6	-1,170.0	-818.3	-979.6	0.00	0.00	0.00
6,400.0	0.00	0.00	6,193.6	-1,170.0	-818.3	-979.6	0.00	0.00	0.00
6,500.0	0.00	0.00	6,293.6	-1,170.0	-818.3	-979.6	0.00	0.00	0.00
6,600.0	0.00	0.00	6,393.6	-1,170.0	-818.3	-979.6	0.00	0.00	0.00
6,658.0	0.00	0.00	6,451.6	-1,170.0	-818.3	-979.6	0.00	0.00	0.00
Start Build 10.00									
6,700.0	4.20	0.73	6,493.5	-1,168.5	-818.3	-978.1	10.01	10.01	0.00
6,800.0	14.20	0.73	6,592.1	-1,152.5	-818.1	-962.5	10.00	10.00	0.00
6,900.0	24.20	0.73	6,686.4	-1,119.6	-817.7	-930.4	10.00	10.00	0.00
7,000.0	34.20	0.73	6,773.6	-1,070.9	-817.0	-882.8	10.00	10.00	0.00
7,100.0	44.20	0.73	6,851.0	-1,007.8	-816.2	-821.2	10.00	10.00	0.00
7,200.0	54.20	0.73	6,916.3	-932.2	-815.3	-747.3	10.00	10.00	0.00
7,300.0	64.20	0.73	6,967.4	-846.4	-814.2	-663.6	10.00	10.00	0.00
7,400.0	74.20	0.73	7,002.9	-753.0	-813.0	-572.4	10.00	10.00	0.00
7,500.0	84.20	0.73	7,021.6	-654.9	-811.8	-476.6	10.00	10.00	0.00
7,558.0	90.00	0.73	7,024.5	-597.1	-811.0	-420.1	9.99	9.99	0.00
Start DLS 1.00 TFO -90.00 - 7" - LPL 575'FSL, 305'FWL									
7,558.9	90.00	0.72	7,024.5	-596.2	-811.0	-419.2	1.12	0.49	-1.00
Start 4252.8 hold at 7558.9 MD									
7,600.0	90.00	0.72	7,024.5	-555.1	-810.5	-379.0	0.00	0.00	0.00
7,700.0	90.00	0.72	7,024.5	-455.1	-809.3	-281.4	0.00	0.00	0.00
7,800.0	90.00	0.72	7,024.5	-355.1	-808.0	-183.7	0.00	0.00	0.00
7,900.0	90.00	0.72	7,024.5	-255.1	-806.7	-86.1	0.00	0.00	0.00
8,000.0	90.00	0.72	7,024.5	-155.1	-805.5	11.6	0.00	0.00	0.00
8,100.0	90.00	0.72	7,024.5	-55.1	-804.2	109.3	0.00	0.00	0.00
8,200.0	90.00	0.72	7,024.5	44.9	-803.0	206.9	0.00	0.00	0.00
8,300.0	90.00	0.72	7,024.5	144.9	-801.7	304.6	0.00	0.00	0.00
8,400.0	90.00	0.72	7,024.5	244.9	-800.5	402.2	0.00	0.00	0.00
8,500.0	90.00	0.72	7,024.5	344.9	-799.2	499.9	0.00	0.00	0.00
8,600.0	90.00	0.72	7,024.5	444.9	-798.0	597.5	0.00	0.00	0.00
8,700.0	90.00	0.72	7,024.5	544.9	-796.7	695.2	0.00	0.00	0.00
8,800.0	90.00	0.72	7,024.5	644.8	-795.5	792.9	0.00	0.00	0.00
8,900.0	90.00	0.72	7,024.5	744.8	-794.2	890.5	0.00	0.00	0.00
9,000.0	90.00	0.72	7,024.5	844.8	-793.0	988.2	0.00	0.00	0.00
9,100.0	90.00	0.72	7,024.5	944.8	-791.7	1,085.8	0.00	0.00	0.00
9,200.0	90.00	0.72	7,024.5	1,044.8	-790.5	1,183.5	0.00	0.00	0.00
9,300.0	90.00	0.72	7,024.5	1,144.8	-789.2	1,281.2	0.00	0.00	0.00

<b>Database:</b>	EDMNEW	<b>Local Co-ordinate Reference:</b>	Well Albrighton B-10HC
<b>Company:</b>	Bayswater Exploration & Production, LLC	<b>TVD Reference:</b>	WELL @ 4829.5ft (RKB - 22.5')
<b>Project:</b>	SEC.10-T6N-R64W	<b>MD Reference:</b>	WELL @ 4829.5ft (RKB - 22.5')
<b>Site:</b>	Albrighton Pad Sec.10-T6N-R64W	<b>North Reference:</b>	True
<b>Well:</b>	Albrighton B-10HC	<b>Survey Calculation Method:</b>	Minimum Curvature
<b>Wellbore:</b>	Wellbore #1		
<b>Design:</b>	Plan #2 (8-27-15)		

Planned Survey									
Measured Depth (ft)	Inclination (°)	Azimuth (°)	Vertical Depth (ft)	+N/-S (ft)	+E/-W (ft)	Vertical Section (ft)	Dogleg Rate (°/100ft)	Build Rate (°/100ft)	Turn Rate (°/100ft)
9,400.0	90.00	0.72	7,024.5	1,244.8	-788.0	1,378.8	0.00	0.00	0.00
9,500.0	90.00	0.72	7,024.5	1,344.8	-786.7	1,476.5	0.00	0.00	0.00
9,600.0	90.00	0.72	7,024.5	1,444.8	-785.5	1,574.1	0.00	0.00	0.00
9,700.0	90.00	0.72	7,024.5	1,544.8	-784.2	1,671.8	0.00	0.00	0.00
9,800.0	90.00	0.72	7,024.5	1,644.8	-783.0	1,769.4	0.00	0.00	0.00
9,900.0	90.00	0.72	7,024.5	1,744.8	-781.7	1,867.1	0.00	0.00	0.00
10,000.0	90.00	0.72	7,024.5	1,844.8	-780.5	1,964.8	0.00	0.00	0.00
10,100.0	90.00	0.72	7,024.5	1,944.7	-779.2	2,062.4	0.00	0.00	0.00
10,200.0	90.00	0.72	7,024.5	2,044.7	-778.0	2,160.1	0.00	0.00	0.00
10,300.0	90.00	0.72	7,024.5	2,144.7	-776.7	2,257.7	0.00	0.00	0.00
10,400.0	90.00	0.72	7,024.5	2,244.7	-775.4	2,355.4	0.00	0.00	0.00
10,500.0	90.00	0.72	7,024.5	2,344.7	-774.2	2,453.0	0.00	0.00	0.00
10,600.0	90.00	0.72	7,024.5	2,444.7	-772.9	2,550.7	0.00	0.00	0.00
10,700.0	90.00	0.72	7,024.5	2,544.7	-771.7	2,648.4	0.00	0.00	0.00
10,800.0	90.00	0.72	7,024.5	2,644.7	-770.4	2,746.0	0.00	0.00	0.00
10,900.0	90.00	0.72	7,024.5	2,744.7	-769.2	2,843.7	0.00	0.00	0.00
11,000.0	90.00	0.72	7,024.5	2,844.7	-767.9	2,941.3	0.00	0.00	0.00
11,100.0	90.00	0.72	7,024.5	2,944.7	-766.7	3,039.0	0.00	0.00	0.00
11,200.0	90.00	0.72	7,024.5	3,044.7	-765.4	3,136.6	0.00	0.00	0.00
11,300.0	90.00	0.72	7,024.5	3,144.7	-764.2	3,234.3	0.00	0.00	0.00
11,400.0	90.00	0.72	7,024.5	3,244.6	-762.9	3,332.0	0.00	0.00	0.00
11,500.0	90.00	0.72	7,024.5	3,344.6	-761.7	3,429.6	0.00	0.00	0.00
11,600.0	90.00	0.72	7,024.5	3,444.6	-760.4	3,527.3	0.00	0.00	0.00
11,700.0	90.00	0.72	7,024.5	3,544.6	-759.2	3,624.9	0.00	0.00	0.00
11,800.0	90.00	0.72	7,024.5	3,644.6	-757.9	3,722.6	0.00	0.00	0.00
11,811.7	90.00	0.72	7,024.5	3,656.3	-757.8	3,734.0	0.00	0.00	0.00
TD at 11811.7 - BHL 470'FNL, 305'FWL									

Targets									
Target Name	Dip Angle (°)	Dip Dir. (°)	TVD (ft)	+N/-S (ft)	+E/-W (ft)	Northing (ft)	Easting (ft)	Latitude	Longitude
- hit/miss target									
- Shape									
BHL 470'FNL, 305'FW	0.00	0.00	7,024.5	3,656.3	-757.8	1,428,843.97	3,265,701.20	40.506648	-104.544470
- plan hits target center									
- Point									
SHL 1170'FSL, 1107'f	0.00	0.00	1.0	0.0	0.0	1,425,196.18	3,266,498.41	40.496612	-104.541745
- plan hits target center									
- Point									
LPL 575'FSL, 305'FW	0.00	0.00	7,024.5	-597.1	-811.0	1,424,590.37	3,265,693.91	40.494973	-104.544661
- plan hits target center									
- Point									

Casing Points					
Measured Depth (ft)	Vertical Depth (ft)	Name	Casing Diameter (")	Hole Diameter (")	
7,558.0	7,024.5	7"	7	7-1/2	

<b>Database:</b>	EDMNEW	<b>Local Co-ordinate Reference:</b>	Well Albrighton B-10HC
<b>Company:</b>	Bayswater Exploration & Production, LLC	<b>TVD Reference:</b>	WELL @ 4829.5ft (RKB - 22.5')
<b>Project:</b>	SEC.10-T6N-R64W	<b>MD Reference:</b>	WELL @ 4829.5ft (RKB - 22.5')
<b>Site:</b>	Albrighton Pad Sec.10-T6N-R64W	<b>North Reference:</b>	True
<b>Well:</b>	Albrighton B-10HC	<b>Survey Calculation Method:</b>	Minimum Curvature
<b>Wellbore:</b>	Wellbore #1		
<b>Design:</b>	Plan #2 (8-27-15)		

Plan Annotations				
Measured Depth (ft)	Vertical Depth (ft)	Local Coordinates		Comment
		+N/-S (ft)	+E/-W (ft)	
400.0	400.0	0.0	0.0	KOP - Start Build 1.50
5,217.9	5,025.7	-149.3	-104.4	Start Drop -2.00
6,658.0	6,451.6	-1,058.0	-740.0	Start Build 10.00
7,558.0	7,024.5	-1,170.0	-818.3	Start DLS 1.00 TFO -90.00
7,558.9	7,024.5	-1,170.0	-818.3	Start 4252.8 hold at 7558.9 MD
11,811.7	7,024.5	-597.1	-811.0	TD at 11811.7