

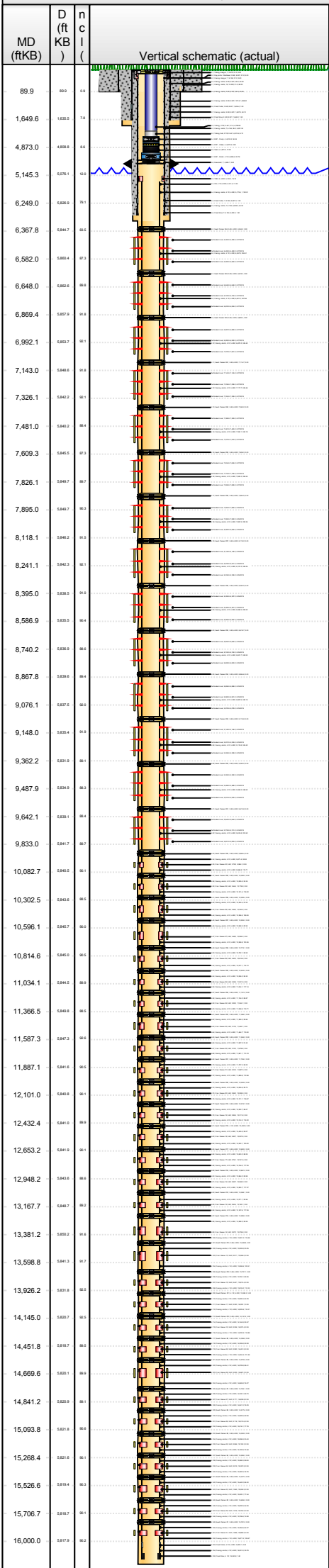


Lease Review

Well Name: HORSETAIL 08D-1704

API Number 051234102401		WPC ID 1CO0761188		Well Permit Number		Field Name Wildcat		County Weld		State CO		
Well Configuration Type Lateral/Horizontal			Orig KB Elv (ft) 4,983.20		Ground Elevation (ft) 4,962.20		Casing Flange Elevation (ft)		Tubing Head Elevation (ft)		Total Depth (ftKB) 16,045.0	
Original Spud Date 4/10/2015		Completion Date 6/17/2015		Asset Group Redtail		Responsible Engineer Charles Ohlson		N/S Dist (ft) 381.0		N/S Ref FNL	E/W Dist (ft) 590.0	E/W Ref FWL
Lot	Quarter 1 NW	Quarter 2 NW	Quarter 3	Quarter 4	Section 8	Section Suffix	Section Type	Township 10	Township N/S Dir N	Range 57	Range E/W Dir W	Meridian

Lateral/Horizontal - Sidetrack 1, 9/11/2015 10:22:03 AM



Wellbore Sections

Wellbore Name	Start Date	Size (in)	Act Top (ftKB)	Act Btm (ftKB)
Original Hole	3/31/2015	24	21.0	90.0
Original Hole	4/10/2015	13 1/2	90.0	1,665.0
Original Hole	4/13/2015	8 3/4	1,665.0	5,839.0
Sidetrack 1	4/16/2015	8 3/4	4,907.0	6,309.0
Sidetrack 1	4/19/2015	6 1/8	6,309.0	16,045.0

Conductor Pipe, 90.0ftKB

OD (in)	Wt (lb/ft)	Grade	Top (ftKB)	Btm (ftKB)	Len (ft)	Item Des
16	65.00	H-40	21.0	90.0	69.00	Casing Joints

Surface Csg, 1,649.5ftKB

OD (in)	Wt (lb/ft)	Grade	Top (ftKB)	Btm (ftKB)	Len (ft)	Item Des
9 5/8	36.00	J-55	21.0	21.0	0.00	Landing Joint
9 5/8	36.00	J-55	21.0	26.0	5.00	Pup joints / Wellhead
9 5/8	36.00	J-55	26.0	66.9	40.90	Casing Joints
9 5/8	36.00	J-55	66.9	107.8	40.88	Casing Joints
9 5/8	36.00	J-55	107.8	1,606.4	1,498.63	Casing Joints
9 5/8	36.00	J-55	1,606.4	1,607.9	1.50	Float Collar
9 5/8	36.00	J-55	1,607.9	1,648.0	40.12	Casing Joints
9 5/8	36.00	J-55	1,648.0	1,649.5	1.50	Float Shoe

Frac String, 5,192.5ftKB

OD (in)	Wt (lb/ft)	Grade	Top (ftKB)	Btm (ftKB)	Len (ft)	Item Des
7 1/16			21.0	21.8	0.80	Casing Hanger
4 1/2	11.60	P-110	21.8	75.4	53.56	Casing Subs 42.47ft 8.05ft 3.04ft
4 1/2	11.60	P-110	75.4	5,173.4	5,098.05	Casing Joints
5.31			5,173.4	5,174.1	0.64	Cross Over
5.85			5,174.1	5,176.1	2.04	No-Go
4.55			5,176.1	5,188.8	12.70	Extension
5.21			5,188.8	5,192.5	3.71	Seal Assembly

Intermediate Csg, 6,294.8ftKB

OD (in)	Wt (lb/ft)	Grade	Top (ftKB)	Btm (ftKB)	Len (ft)	Item Des
7	29.00	L-80	21.0	21.0	0.00	Landing Joint
7	29.00	L-80	21.0	26.0	5.00	Casing Hanger
7	29.00	L-80	26.0	6,247.4	6,221.39	Casing Joints
7	29.00	L-80	6,247.4	6,248.9	1.50	Float Collar
7	29.00	L-80	6,248.9	6,293.3	44.39	Casing Joints
7	29.00	L-80	6,293.3	6,294.8	1.50	Float Shoe

Liner, 16,042.4ftKB

OD (in)	Wt (lb/ft)	Grade	Top (ftKB)	Btm (ftKB)	Len (ft)	Item Des
			5,145.2	5,145.2	0.00	Running Tool
6			5,145.2	5,161.4	16.18	TBR
4 1/2			5,161.4	5,172.4	11.00	XO
4 1/2	11.60	P-110	5,172.4	6,364.9	1,192.51	Casing Joints
5.85	11.60	P-110	6,364.9	6,367.9	3.00	Swell Packer #44
4 1/2	11.60	P-110	6,367.9	6,618.3	250.41	Casing Joints
5.85	11.60	P-110	6,618.3	6,621.3	3.00	Swell Packer #43
4 1/2	11.60	P-110	6,621.3	6,869.3	247.96	Casing Joints
5.85	11.60	P-110	6,869.3	6,872.3	3.00	Swell Packer #42
4 1/2	11.60	P-110	6,872.3	7,114.7	242.40	Casing Joints
5.85	11.60	P-110	7,114.7	7,117.7	3.00	Swell Packer #41
4 1/2	11.60	P-110	7,117.7	7,360.2	242.46	Casing Joints
5.85	11.60	P-110	7,360.2	7,363.2	3.00	Swell Packer #40
4 1/2	11.60	P-110	7,363.2	7,606.3	243.18	Casing Joints
5.85	11.60	P-110	7,606.3	7,609.3	3.00	Swell Packer #39
4 1/2	11.60	P-110	7,609.3	7,864.9	255.55	Casing Joints
5.85	11.60	P-110	7,864.9	7,867.9	3.00	Swell Packer #38
4 1/2	11.60	P-110	7,867.9	8,118.2	250.36	Casing Joints
5.85	11.60	P-110	8,118.2	8,121.2	3.00	Swell Packer #37
4 1/2	11.60	P-110	8,121.2	8,363.5	242.25	Casing Joints
5.85	11.60	P-110	8,363.5	8,366.5	3.00	Swell Packer #36
4 1/2	11.60	P-110	8,366.5	8,618.7	252.22	Casing Joints
5.85	11.60	P-110	8,618.7	8,621.7	3.00	Swell Packer #35
4 1/2	11.60	P-110	8,621.7	8,864.6	242.93	Casing Joints
5.85	11.60	P-110	8,864.6	8,867.6	3.00	Swell Packer #34
4 1/2	11.60	P-110	8,867.6	9,115.8	248.18	Casing Joints
5.85	11.60	P-110	9,115.8	9,118.8	3.00	Swell Packer #33
4 1/2	11.60	P-110	9,118.8	9,362.2	243.42	Casing Joints
5.85	11.60	P-110	9,362.2	9,365.2	3.00	Swell Packer #32
4 1/2	11.60	P-110	9,365.2	9,613.8	248.52	Casing Joints
5.85	11.60	P-110	9,613.8	9,616.8	3.00	Swell Packer #31
4 1/2	11.60	P-110	9,616.8	9,868.4	251.62	Casing Joints
5.85	11.60	P-110	9,868.4	9,871.4	3.00	Swell Packer #30
4 1/2	11.60	P-110	9,871.4	9,964.3	92.93	Casing Joints



Lease Review
Well Name: HORSETAIL 08D-1704

API Number 051234102401				WPC ID 1CO0761188				Well Permit Number				Field Name Wildcat				County Weld		State CO											
Well Configuration Type Lateral/Horizontal						Orig KB Elv (ft) 4,983.20		Ground Elevation (ft) 4,962.20		Casing Flange Elevation (ft)				Tubing Head Elevation (ft)				Total Depth (ftKB) 16,045.0											
Original Spud Date 4/10/2015				Completion Date 6/17/2015		Asset Group Redtail				Responsible Engineer Charles Ohlson				N/S Dist (ft) 381.0		N/S Ref FNL		E/W Dist (ft) 590.0		E/W Ref FWL									
Lot		Quarter 1 NW		Quarter 2 NW		Quarter 3		Quarter 4		Section 8		Section Suffix		Section Type		Township 10 N		Township N/S Dir		Range 57		Range E/W Dir W		Meridian					
Lateral/Horizontal - Sidetrack 1, 9/11/2015 10:22:04 AM										OD (in)		Wt (lb/ft)		Grade		Top (ftKB)		Btm (ftKB)		Len (ft)		Item Des							
MD (ftKB)		D (ft KB)		n (KB)		c (KB)		l (KB)		Vertical schematic (actual)		Logs		5.6		9,964.3		9,966.8		2.53		Frac Sleeve 30							
														4 1/2		11.60		P-110		9,966.8		10,082.6		115.71		Casing Joints			
														5.85		11.60		P-110		10,082.6		10,085.6		3.00		Swell Packer #29			
														4 1/2		11.60		P-110		10,085.6		10,178.9		93.35		Casing Joints			
89.9		003		0.0										5.6						10,178.9		10,181.4		2.53		Frac Sleeve 29			
1,649.6		1035.0		7.0										4 1/2		11.60		P-110		10,181.4		10,299.5		118.02		Casing Joints			
4,873.0		4309.0		0.0										5.85		11.60		P-110		10,299.5		10,302.5		3.00		Swell Packer #28			
5,145.3		5076.1		0.0										4 1/2		11.60		P-110		10,302.5		10,394.0		91.53		Casing Joints			
6,249.0		5820.0		0.0										5.6						10,394.0		10,396.5		2.53		Frac Sleeve 28			
6,367.8		5844.7		0.0										4 1/2		11.60		P-110		10,396.5		10,505.3		108.83		Casing Joints			
6,582.0		5860.0		0.0										5.85		11.60		P-110		10,505.3		10,508.3		3.00		Swell Packer #27			
6,648.0		5862.0		0.0										4 1/2		11.60		P-110		10,508.3		10,596.3		87.93		Casing Joints			
6,869.4		5870.0		0.0										5.6						10,596.3		10,598.8		2.53		Frac Sleeve 27			
6,992.1		5883.7		0.0										4 1/2		11.60		P-110		10,598.8		10,719.1		120.26		Casing Joints			
7,143.0		5900.0		0.0										5.85		11.60		P-110		10,719.1		10,722.1		3.00		Swell Packer #26			
7,326.1		5902.0		0.0										4 1/2		11.60		P-110		10,722.1		10,814.6		92.52		Casing Joints			
7,481.0		5902.0		0.0										5.6						10,814.6		10,817.1		2.53		Frac Sleeve 26			
7,609.3		5905.0		0.0										4 1/2		11.60		P-110		10,817.1		10,933.2		116.12		Casing Joints			
7,826.1		5907.0		0.0										5.85		11.60		P-110		10,933.2		10,936.2		3.00		Swell Packer #25			
7,895.0		5907.0		0.0										4 1/2		11.60		P-110		10,936.2		11,031.5		95.30		Casing Joints			
8,118.1		5907.0		0.0										5.6						11,031.5		11,034.1		2.53		Frac Sleeve 25			
8,241.1		5907.0		0.0										4 1/2		11.60		P-110		11,034.1		11,151.2		117.14		Casing Joints			
8,395.0		5908.0		0.0										5.85		11.60		P-110		11,151.2		11,154.2		3.00		Swell Packer #24			
8,586.9		5908.0		0.0										4 1/2		11.60		P-110		11,154.2		11,244.1		89.87		Casing Joints			
8,740.2		5908.0		0.0										5.6						11,244.1		11,246.6		2.53		Frac Sleeve 24			
8,867.8		5908.0		0.0										4 1/2		11.60		P-110		11,246.6		11,366.3		119.71		Casing Joints			
9,076.1		5907.0		0.0										5.85		11.60		P-110		11,366.3		11,369.3		3.00		Swell Packer #23			
9,148.0		5905.0		0.0										4 1/2		11.60		P-110		11,369.3		11,462.2		92.84		Casing Joints			
9,362.2		5903.0		0.0										5.6						11,462.2		11,464.7		2.53		Frac Sleeve 23			
9,487.9		5904.0		0.0										4 1/2		11.60		P-110		11,464.7		11,584.2		119.50		Casing Joints			
9,642.1		5906.0		0.0										5.85		11.60		P-110		11,584.2		11,587.2		3.00		Swell Packer #22			
9,833.0		5907.0		0.0										4 1/2		11.60		P-110		11,587.2		11,678.6		91.40		Casing Joints			
10,082.7		5905.0		0.0										5.6						11,678.6		11,681.1		2.53		Frac Sleeve 22			
10,302.5		5905.0		0.0										4 1/2		11.60		P-110		11,681.1		11,794.3		113.18		Casing Joints			
10,596.1		5907.0		0.0										5.85		11.60		P-110		11,794.3		11,797.3		3.00		Swell Packer #21			
10,814.6		5905.0		0.0										4 1/2		11.60		P-110		11,797.3		11,887.3		90.00		Casing Joints			
11,034.1		5905.0		0.0										5.6						11,887.3		11,889.8		2.53		Frac Sleeve 21			
11,366.5		5908.0		0.0										4 1/2		11.60		P-110		11,889.8		12,002.8		112.98		Casing Joints			
11,587.3		5907.0		0.0										5.85		11.60		P-110		12,002.8		12,005.8		3.00		Swell Packer #20			
11,887.1		5908.0		0.0										4 1/2		11.60		P-110		12,005.8		12,098.5		92.73		Casing Joints			
12,101.0		5908.0		0.0										5.6						12,098.5		12,101.1		2.53		Frac Sleeve 20			
12,432.4		5908.0		0.0										4 1/2		11.60		P-110		12,101.1		12,219.7		118.67		Casing Joints			
12,653.2		5908.0		0.0										5.85		11.60		P-110		12,219.7		12,222.7		3.00		Swell Packer #19			
12,948.2		5908.0		0.0										4 1/2		11.60		P-110		12,222.7		12,311.8		89.07		Casing Joints			
13,167.7		5907.0		0.0										5.6						12,311.8		12,314.3		2.53		Frac Sleeve 19			
13,381.2		5908.0		0.0										4 1/2		11.60		P-110		12,314.3		12,432.6		118.22		Casing Joints			
13,598.8		5908.0		0.0										4 1/2		11.60		P-110		12,432.6		12,435.6		3.00		Swell Packer #18			
13,926.2		5907.0		0.0										4 1/2		11.60		P-110		12,435.6		12,527.6		92.07		Casing Joints			
14,145.0		5908.0		0.0										5.6						12,527.6		12,530.2		2.53		Frac Sleeve 18			
14,451.8		5907.0		0.0										4 1/2		11.60		P-110		12,530.2		12,650.2		120.02		Casing Joints			
14,669.6		5908.0		0.0										5.85		11.60		P-110		12,650.2		12,653.2		3.00		Swell Packer #17			
14,841.2		5908.0		0.0										4 1/2		11.60		P-110		12,653.2		12,741.5		88.29		Casing Joints			
15,093.8		5908.0		0.0										5.6						12,741.5		12,744.0		2.53		Frac Sleeve 17			
15,268.4		5908.0		0.0										4 1/2		11.60		P-110		12,744.0		12,861.2		117.25		Casing Joints			
15,526.6		5908.0		0.0										5.85		11.60		P-110		12,861.2		12,864.2		3.00		Swell Packer #16			
15,706.7		5908.0		0.0										4 1/2		11.60		P-110		12,864.2		12,948.2		83.98		Casing Joints			
16,000.0		5907.0		0.0										5.6						12,948.2		12,950.8		2.53		Frac Sleeve 16			
														4 1/2		11.60		P-110		12,950.8		13,068.1		117.37		Casing Joints			
														5.85		11.60		P-110		13,068.1		13,071.1		3.00		Swell Packer #15			
														4 1/2		11.60		P-110		13,071.1		13,165.1		93.98		Casing Joints			
														5.6						13,165.1		13,167.6		2.53		Frac Sleeve 15			
														4 1/2		11.60		P-110		13,167.6		13,285.2		117.55		Casing Joints			
														5.85		11.60		P-110		13,285.2		13,288.2		3.00		Swell Packer #14			
														4 1/2		11.60		P-110		13,288.2		13,378.8		90.59		Casing Joints			
														5.6						13,378.8		13,381.3		2.53		Frac Sleeve 14			
														4 1/2		11.60		P-110		13,381.3		13,499.8		118.48		Casing Joints			
														5.85		11.60		P-110		13,499.8		13,502.8		3.00		Swell Packer #13			
														4 1/2		11.60		P-110		13,502.8		13,596.0		93.25		Casing Joints			
														5.6						13,596.0		13,598.6		2.53		Frac Sleeve 13			
														4 1/2		11.60		P-110		13,598.6		13,721.1		122.51		Casing Joints			
														5.85		11.60		P-110		13,721.1		13,724.1		3.00		Swell Packer #12			



Lease Review
Well Name: HORSETAIL 08D-1704

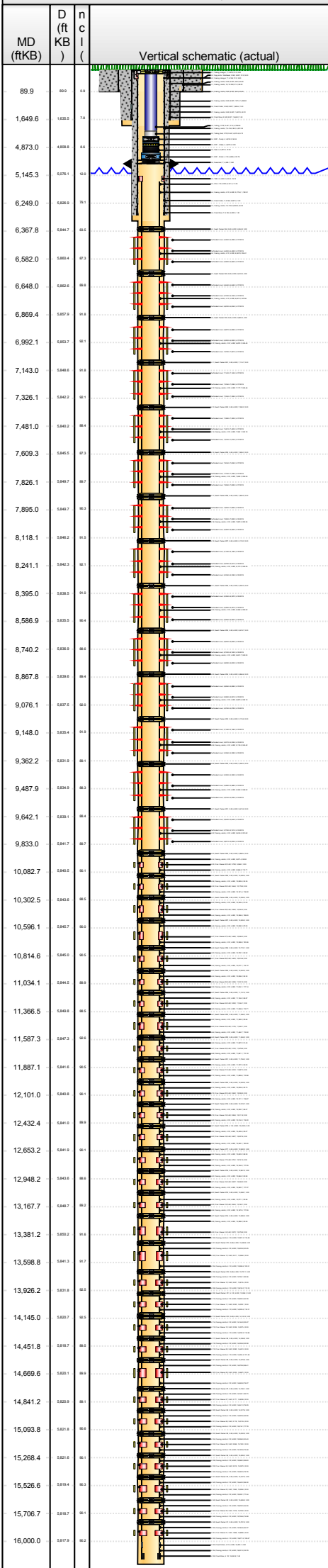
API Number 051234102401				WPC ID 1CO0761188				Well Permit Number				Field Name Wildcat				County Weld		State CO			
Well Configuration Type Lateral/Horizontal						Orig KB Elv (ft) 4,983.20		Ground Elevation (ft) 4,962.20		Casing Flange Elevation (ft)				Tubing Head Elevation (ft)		Total Depth (ftKB) 16,045.0					
Original Spud Date 4/10/2015				Completion Date 6/17/2015		Asset Group Redtail				Responsible Engineer Charles Ohlson				N/S Dist (ft) 381.0		N/S Ref FNL		E/W Dist (ft) 590.0		E/W Ref FWL	
Lot		Quarter 1 NW	Quarter 2 NW	Quarter 3	Quarter 4	Section 8		Section Suffix	Section Type		Township 10	Township N/S Dir N	Range 57		Range E/W Dir W	Meridian					
Lateral/Horizontal - Sidetrack 1, 9/11/2015 10:22:04 AM								OD (in)	Wt (lb/ft)	Grade	Top (ftKB)		Btm (ftKB)		Len (ft)		Item Des				
MD (ftKB)	D (ft KB)	n (KB)	c (KB)	l (KB)	Vertical schematic (actual)	Logs	4 1/2	11.60	P-110	13,724.1		13,813.4		89.36		Casing Joints					
							5.6			13,813.4		13,816.0		2.53		Frac Sleeve 12					
89.9	359	3.0					4 1/2	11.60	P-110	13,816.0		13,926.3		110.33		Casing Joints					
							4 1/2	11.60	P-110	13,926.3		13,929.3		3.00		Swell Packer #11					
1,649.6	1,635.2	7.8					4 1/2	11.60	P-110	13,929.3		14,023.1		93.78		Casing Joints					
							5.6			14,023.1		14,025.6		2.53		Frac Sleeve 11					
4,873.0	4,839.8	34.2					4 1/2	11.60	P-110	14,025.6		14,141.9		116.31		Casing Joints					
							5.85	11.60	P-110	14,141.9		14,144.9		3.00		Swell Packer #10					
5,145.3	5,076.1	69.2					4 1/2	11.60	P-110	14,144.9		14,237.4		92.47		Casing Joints					
							5.6			14,237.4		14,239.9		2.53		Frac Sleeve 10					
6,249.0	6,205.8	43.2					4 1/2	11.60	P-110	14,239.9		14,356.8		116.86		Casing Joints					
							5.85	11.60	P-110	14,356.8		14,359.8		3.00		Swell Packer #9					
6,367.8	6,344.7	23.0					4 1/2	11.60	P-110	14,359.8		14,451.9		92.08		Casing Joints					
							5.6			14,451.9		14,454.4		2.53		Frac Sleeve 09					
6,582.0	6,580.4	15.6					4 1/2	11.60	P-110	14,454.4		14,575.8		121.46		Casing Joints					
							5.85	11.60	P-110	14,575.8		14,578.8		3.00		Swell Packer #8					
6,648.0	6,642.0	6.0					4 1/2	11.60	P-110	14,578.8		14,667.3		88.41		Casing Joints					
							5.6			14,667.3		14,669.8		2.53		Frac Sleeve 08					
6,869.4	6,857.9	11.5					4 1/2	11.60	P-110	14,669.8		14,746.1		76.27		Casing Joints					
							5.85	11.60	P-110	14,746.1		14,749.1		3.00		Swell Packer #7					
6,992.1	7,042.2	50.8					4 1/2	11.60	P-110	14,749.1		14,838.8		89.73		Casing Joints					
							5.6			14,838.8		14,841.3		2.53		Frac Sleeve 07					
7,143.0	7,141.0	2.2					4 1/2	11.60	P-110	14,841.3		14,917.6		76.29		Casing Joints					
							5.85	11.60	P-110	14,917.6		14,920.6		3.00		Swell Packer #6					
7,326.1	7,341.0	14.9					4 1/2	11.60	P-110	14,920.6		15,013.6		92.95		Casing Joints					
							5.6			15,013.6		15,016.1		2.53		Frac Sleeve 06					
7,481.0	7,509.3	28.3					4 1/2	11.60	P-110	15,016.1		15,093.9		77.78		Casing Joints					
							5.85	11.60	P-110	15,093.9		15,096.9		3.00		Swell Packer #5					
7,609.3	7,645.2	35.9					4 1/2	11.60	P-110	15,096.9		15,190.3		93.43		Casing Joints					
							5.6			15,190.3		15,192.8		2.53		Frac Sleeve 05					
7,826.1	7,857.8	31.7					4 1/2	11.60	P-110	15,192.8		15,265.3		72.48		Casing Joints					
							5.85	11.60	P-110	15,265.3		15,268.3		3.00		Swell Packer #4					
7,895.0	7,937.2	42.2					4 1/2	11.60	P-110	15,268.3		15,357.9		89.63		Casing Joints					
							5.6			15,357.9		15,360.5		2.53		Frac Sleeve 04					
8,118.1	8,142.2	24.1					4 1/2	11.60	P-110	15,360.5		15,437.2		76.76		Casing Joints					
							5.85	11.60	P-110	15,437.2		15,440.2		3.00		Swell Packer #3					
8,241.1	8,284.9	43.8					4 1/2	11.60	P-110	15,440.2		15,526.5		86.30		Casing Joints					
							5.6			15,526.5		15,529.1		2.53		Frac Sleeve 03					
8,395.0	8,330.1	64.9					4 1/2	11.60	P-110	15,529.1		15,606.5		77.44		Casing Joints					
							5.85	11.60	P-110	15,606.5		15,609.5		3.00		Swell Packer #2					
8,586.9	8,545.5	41.4					4 1/2	11.60	P-110	15,609.5		15,704.0		94.55		Casing Joints					
							5.6			15,704.0		15,706.6		2.53		Frac Sleeve 02					
8,740.2	8,647.7	92.5					4 1/2	11.60	P-110	15,706.6		15,781.6		74.98		Casing Joints					
							5.85	11.60	P-110	15,781.6		15,784.6		3.00		Swell Packer #1					
8,867.8	8,845.2	22.4					4 1/2	11.60	P-110	15,784.6		15,868.9		84.37		Casing Joints					
							5.6			15,868.9		15,871.5		2.53		Frac Sleeve 01					
9,076.1	9,045.3	30.8					4 1/2	11.60	P-110	15,871.5		16,000.1		128.67		Casing Joints					
							4 1/2			16,000.1		16,001.0		0.90		Float Collar					
9,148.0	9,141.0	7.0					4 1/2	11.60	P-110	16,001.0		16,040.8		39.78		Casing Joints					
							4 1/2			16,040.8		16,042.4		1.60		Float Shoe					
9,362.2	9,345.8	16.4					Cement Stages														
							Des		Pump Start Date		Drill Out Date		Top (ftKB)		Btm (ftKB)		Top Meas Meth				
9,487.9	9,484.9	2.9					Conductor Cement		3/31/2015				21.0		90.0		Returns to Surface				
							Surface Casing Cement		4/11/2015				21.0		1,649.5		Volume Calculations				
9,642.1	9,640.2	1.9					Cement Plug		4/15/2015				4,907.0		5,839.0		Volume Calculations				
							Intermediate Casing Cement		4/19/2015				21.0		6,294.8		Returns to Surface				
9,833.0	9,830.2	2.8					Perforations														
							Type of Hole		Date		Top (ftKB)		Btm (ftKB)		Zone						
10,082.7	10,080.2	2.5					Perforated Liner		6/17/2015		6,393.0		6,395.0		Niobrara, Original Hole						
							Perforated Liner		6/17/2015		6,490.0		6,492.0		Niobrara, Original Hole						
10,302.5	10,300.7	1.8					Perforated Liner		6/17/2015		6,582.0		6,584.0		Niobrara, Original Hole						
							Perforated Liner		6/17/2015		6,646.0		6,648.0		Niobrara, Original Hole						
10,596.1	10,593.7	2.4					Perforated Liner		6/17/2015		6,742.0		6,744.0		Niobrara, Original Hole						
							Perforated Liner		6/17/2015		6,832.0		6,834.0		Niobrara, Original Hole						
10,814.6	10,812.1	2.5					Perforated Liner		6/17/2015		6,897.0		6,899.0		Niobrara, Original Hole						
							Perforated Liner		6/17/2015		6,990.0		6,992.0		Niobrara, Original Hole						
11,034.1	11,031.6	2.5					Perforated Liner		6/17/2015		7,079.0		7,081.0		Niobrara, Original Hole						
							Perforated Liner		6/17/2015		7,143.0		7,145.0		Niobrara, Original Hole						
11,366.5	11,364.0	2.5					Perforated Liner		6/17/2015		7,236.0		7,238.0		Niobrara, Original Hole						
							Perforated Liner		6/17/2015		7,324.0		7,326.0		Niobrara, Original Hole						
11,587.3	11,584.8	2.5					Perforated Liner		6/17/2015		7,388.0		7,390.0		Niobrara, Original Hole						
							Perforated Liner		6/17/2015												



Lease Review
Well Name: HORSETAIL 08D-1704

API Number 051234102401	WPC ID 1CO0761188	Well Permit Number	Field Name Wildcat	County Weld	State CO
Well Configuration Type Lateral/Horizontal	Orig KB Elv (ft) 4,983.20	Ground Elevation (ft) 4,962.20	Casing Flange Elevation (ft)	Tubing Head Elevation (ft)	Total Depth (ftKB) 16,045.0
Original Spud Date 4/10/2015	Completion Date 6/17/2015	Asset Group Redtail	Responsible Engineer Charles Ohlson	N/S Dist (ft) 381.0 N/S Ref FNL	E/W Dist (ft) 590.0 E/W Ref FWL
Lot	Quarter 1 NW	Quarter 2 NW	Quarter 3	Quarter 4	Section 8
			Section Suffix	Section Type	Township 10 N
					Range 57 W

Lateral/Horizontal - Sidetrack 1, 9/11/2015 10:22:05 AM



Perforations

Type of Hole	Date	Top (ftKB)	Btm (ftKB)	Zone
Perforated Liner	6/17/2015	7,481.0	7,483.0	Niobrara, Original Hole
Perforated Liner	6/17/2015	7,572.0	7,574.0	Niobrara, Original Hole
Perforated Liner	6/17/2015	7,634.0	7,636.0	Niobrara, Original Hole
Perforated Liner	6/17/2015	7,734.0	7,736.0	Niobrara, Original Hole
Perforated Liner	6/17/2015	7,826.0	7,828.0	Niobrara, Original Hole
Perforated Liner	6/16/2015	7,893.0	7,895.0	Niobrara, Original Hole
Perforated Liner	6/16/2015	7,990.0	7,992.0	Niobrara, Original Hole
Perforated Liner	6/16/2015	8,082.0	8,084.0	Niobrara, Original Hole
Perforated Liner	6/16/2015	8,146.0	8,148.0	Niobrara, Original Hole
Perforated Liner	6/16/2015	8,239.0	8,241.0	Niobrara, Original Hole
Perforated Liner	6/16/2015	8,336.0	8,338.0	Niobrara, Original Hole
Perforated Liner	6/16/2015	8,395.0	8,397.0	Niobrara, Original Hole
Perforated Liner	6/16/2015	8,489.0	8,491.0	Niobrara, Original Hole
Perforated Liner	6/16/2015	8,585.0	8,587.0	Niobrara, Original Hole
Perforated Liner	6/16/2015	8,650.0	8,652.0	Niobrara, Original Hole
Perforated Liner	6/16/2015	8,740.0	8,742.0	Niobrara, Original Hole
Perforated Liner	6/16/2015	8,828.0	8,830.0	Niobrara, Original Hole
Perforated Liner	6/15/2015	8,896.0	8,898.0	Niobrara, Original Hole
Perforated Liner	6/15/2015	8,989.0	8,991.0	Niobrara, Original Hole
Perforated Liner	6/15/2015	9,076.0	9,078.0	Niobrara, Original Hole
Perforated Liner	6/15/2015	9,146.0	9,148.0	Niobrara, Original Hole
Perforated Liner	6/15/2015	9,237.0	9,239.0	Niobrara, Original Hole
Perforated Liner	6/15/2015	9,326.0	9,328.0	Niobrara, Original Hole
Perforated Liner	6/14/2015	9,390.0	9,392.0	Niobrara, Original Hole
Perforated Liner	6/14/2015	9,486.0	9,488.0	Niobrara, Original Hole
Perforated Liner	6/14/2015	9,574.0	9,576.0	Niobrara, Original Hole
Perforated Liner	6/14/2015	9,642.0	9,644.0	Niobrara, Original Hole
Perforated Liner	6/14/2015	9,739.0	9,741.0	Niobrara, Original Hole
Perforated Liner	6/14/2015	9,831.0	9,833.0	Niobrara, Original Hole

Sand Frac on 6/8/2015 06:00

Comment Treatment End Date: 6/17/2015; Number of staged intervals: 44; # of Perfs: 504; # of Sleeves: 30; Min Frac Gradient: .755; Slickwater: 239943 bbl; Freshwater: 1835 bbl	Min Top De... 6,393.0	Max Btm D... 15,871.5	Frac Length (ft)
------------------------------------------------------------------------------------------------------------------------------------------------------------------------------------------	--------------------------	--------------------------	------------------

Stim/Treat Fluids

Slick Water, <fluidtyp>

Proppant Frm (lb)	Total Clean Vol...	Avg Treat Rate...	Max Treat Rate...	Avg Treat Press...	P Max (psi)	Frac Gradient (p...
5,423,172.0	241778.53	70.70	88.90	5,944.0	7,707.0	0.76

Slick Water, Fresh Water

Proppant Frm (lb)	Total Clean Vol...	Avg Treat Rate...	Max Treat Rate...	Avg Treat Press...	P Max (psi)	Frac Gradient (p...
5,423,172.0	241778.53	70.70	88.90	5,944.0	7,707.0	0.76

Stim/Treat Stages

Stg #	Start Date	Top Depth (ftKB)	Bottom Depth (ftKB)	Vol Clean Pump (bbl)	Vol Slurry (bbl)
1	6/8/2015	15,868.9	15,871.5	5538.86	5626.36
Additive	Type	Amount	Units	Sand Size	
Proppant	PW 30/50	72,381.0	lb	30/50	
Additive	Type	Amount	Units	Sand Size	
Proppant	PW 40/70	2,581.0	lb	40/70	
2	6/8/2015	15,704.0	15,706.6	5530.05	5676.31
Additive	Type	Amount	Units	Sand Size	
Proppant	PW 30/50	118,026.0	lb	30/50	
Additive	Type	Amount	Units	Sand Size	
Proppant	PW 40/70	2,592.0	lb	40/70	
3	6/8/2015	15,526.5	15,529.1	5753.21	5897.32
Additive	Type	Amount	Units	Sand Size	
Proppant	PW 30/50	116,442.0	lb	30/50	
Additive	Type	Amount	Units	Sand Size	
Proppant	PW 40/70	2,148.0	lb	40/70	
4	6/8/2015	15,357.9	15,360.5	5465.60	5588.15
Additive	Type	Amount	Units	Sand Size	
Proppant	PW 30/50	104,671.0	lb	30/50	
Additive	Type	Amount	Units	Sand Size	
Proppant	PW 40/70	2,720.0	lb	40/70	
5	6/8/2015	15,190.3	15,192.8	5576.43	5729.06
Additive	Type	Amount	Units	Sand Size	
Proppant	PW 30/50	126,990.0	lb	30/50	
Additive	Type	Amount	Units	Sand Size	
Proppant	PW 40/70	2,865.0	lb	40/70	
6	6/8/2015	15,013.6	15,016.1	5424.83	5564.35
Additive	Type	Amount	Units	Sand Size	
Proppant	PW 30/50	117,969.0	lb	30/50	
Additive	Type	Amount	Units	Sand Size	
Proppant	PW 40/70	2,851.0	lb	40/70	
7	6/8/2015	14,838.8	14,841.3	5446.43	5590.75
Additive	Type	Amount	Units	Sand Size	
Proppant	PW 30/50	124,550.0	lb	30/50	



Lease Review
Well Name: HORSETAIL 08D-1704

API Number 051234102401				WPC ID 1CO0761188				Well Permit Number				Field Name Wildcat				County Weld		State CO									
Well Configuration Type Lateral/Horizontal						Orig KB Elv (ft) 4,983.20		Ground Elevation (ft) 4,962.20		Casing Flange Elevation (ft)				Tubing Head Elevation (ft)		Total Depth (ftKB) 16,045.0											
Original Spud Date 4/10/2015				Completion Date 6/17/2015		Asset Group Redtail		Responsible Engineer Charles Ohlson				N/S Dist (ft) 381.0		N/S Ref FNL		E/W Dist (ft) 590.0		E/W Ref FWL									
Lot		Quarter 1 NW	Quarter 2 NW	Quarter 3	Quarter 4	Section 8	Section Suffix	Section Type		Township 10 N		Township N/S Dir		Range 57 W		Meridian											
Lateral/Horizontal - Sidetrack 1, 9/11/2015 10:22:06 AM																											
Additive Proppant																		Type PW 40/70		Amount 2,924.0		Units lb		Sand Size 40/70			
MD (ftKB)	D (ft)	n (in)	Vertical schematic (actual)										Logs				Stg #	Start Date		Top Depth (ftKB)		Bottom Depth (ftKB)		Vol Clean Pump (bbl)		Vol Slurry (bbl)	
89.9	889	4.5															8	6/8/2015		14,667.3		14,669.8		5460.19		5607.43	
1,649.6	1335.2	7.8																Additive Proppant		Type PW 30/50		Amount 128,966.0		Units lb		Sand Size 30/50	
4,873.0	4339.8	4.5																Additive Proppant		Type PW 40/70		Amount 3,015.0		Units lb		Sand Size 40/70	
5,145.3	5376.1	9.0															9	6/8/2015		14,451.9		14,454.4		5534.64		5680.58	
6,249.0	6320.5	79.1																Additive Proppant		Type PW 30/50		Amount 127,968.0		Units lb		Sand Size 30/50	
6,367.8	6384.7	98.5																Additive Proppant		Type PW 40/70		Amount 3,006.0		Units lb		Sand Size 40/70	
6,582.0	6380.2	49.3															10	6/9/2015		14,237.4		14,239.9		5441.69		5582.28	
6,648.0	6382.8	98.8																Additive Proppant		Type PW 30/50		Amount 121,551.0		Units lb		Sand Size 30/50	
6,869.4	6357.9	49.8																Additive Proppant		Type PW 40/70		Amount 3,052.0		Units lb		Sand Size 40/70	
6,992.1	6353.7	98.1															11	6/9/2015		14,023.1		14,025.6		5455.24		5597.59	
7,143.0	6346.5	49.8																Additive Proppant		Type PW 30/50		Amount 128,671.0		Units lb		Sand Size 30/50	
7,326.1	6342.2	98.1																Additive Proppant		Type PW 40/70		Amount 3,610.0		Units lb		Sand Size 40/70	
7,481.0	6340.2	98.4															12	6/9/2015		13,813.4		13,816.0		5555.55		5697.69	
7,609.3	6345.5	49.3																Additive Proppant		Type PW 30/50		Amount 130,617.0		Units lb		Sand Size 30/50	
7,826.1	6340.7	98.7																Additive Proppant		Type PW 40/70		Amount 3,417.0		Units lb		Sand Size 40/70	
7,895.0	6340.7	98.3															13	6/9/2015		13,596.0		13,598.6		6074.83		3956.00	
8,118.1	6342.2	91.5																Additive Proppant		Type PW 30/50		Amount 124,236.0		Units lb		Sand Size 30/50	
8,241.1	6342.3	98.1																Additive Proppant		Type PW 40/70		Amount 2,866.0		Units lb		Sand Size 40/70	
8,395.0	6335.2	91.5															14	6/9/2015		13,378.8		13,381.3		5464.62		5609.10	
8,586.9	6335.5	98.4																Additive Proppant		Type PW 30/50		Amount 120,377.0		Units lb		Sand Size 30/50	
8,740.2	6338.9	98.5																Additive Proppant		Type PW 40/70		Amount 2,368.0		Units lb		Sand Size 40/70	
8,867.8	6336.5	98.4															15	6/9/2015		13,165.1		13,167.6		6003.98		6144.70	
9,076.1	6337.5	98.5																Additive Proppant		Type PW 30/50		Amount 118,407.0		Units lb		Sand Size 30/50	
9,148.0	6334.4	91.8																Additive Proppant		Type PW 40/70		Amount 2,352.0		Units lb		Sand Size 40/70	
9,362.2	6331.9	98.1															16	6/9/2015		12,948.2		12,950.8		5416.36		5562.18	
9,487.9	6334.9	98.3																Additive Proppant		Type PW 30/50		Amount 122,611.0		Units lb		Sand Size 30/50	
9,642.1	6338.1	98.4																Additive Proppant		Type PW 40/70		Amount 2,413.0		Units lb		Sand Size 40/70	
9,833.0	6341.7	98.7															17	6/9/2015		12,741.5		12,744.0		5680.31		5821.62	
10,082.7	6345.5	98.1																Additive Proppant		Type PW 30/50		Amount 121,737.0		Units lb		Sand Size 30/50	
10,302.5	6343.8	98.5																Additive Proppant		Type PW 40/70		Amount 3,590.0		Units lb		Sand Size 40/70	
10,596.1	6340.7	98.5															18	6/9/2015		12,527.6		12,530.2		5408.14		5553.64	
10,814.6	6345.0	98.5																Additive Proppant		Type PW 30/50		Amount 125,927.0		Units lb		Sand Size 30/50	
11,034.1	6344.5	98.9																Additive Proppant		Type PW 40/70		Amount 2,809.0		Units lb		Sand Size 40/70	
11,366.5	6346.5	98.5															19	6/9/2015		12,311.8		12,314.3		5355.33		5497.44	
11,587.3	6347.5	98.8																Additive Proppant		Type PW 30/50		Amount 125,228.0		Units lb		Sand Size 30/50	
11,887.1	6341.8	98.5																Additive Proppant		Type PW 40/70		Amount 2,854.0		Units lb		Sand Size 40/70	
12,101.0	6340.8	98.1															20	6/9/2015		12,098.5		12,101.1		5409.05		5555.82	
12,432.4	6341.8	98.3																Additive Proppant		Type PW 30/50		Amount 130,271.0		Units lb		Sand Size 30/50	
12,653.2	6341.2	98.1																Additive Proppant		Type PW 40/70		Amount 3,036.0		Units lb		Sand Size 40/70	
12,948.2	6345.5	98.8															21	6/9/2015		11,887.3		11,889.8		5340.45		5481.50	
13,167.7	6343.7	98.2																Additive Proppant		Type PW 30/50		Amount 125,526.0		Units lb		Sand Size 30/50	
13,381.2	6339.2	91.8																Additive Proppant		Type PW 40/70		Amount 3,065.0		Units lb		Sand Size 40/70	
13,598.8	6341.3	91.7															22	6/10/2015		11,678.6		11,681.1		5385.05		5529.31	
13,926.2	6331.8	98.5																Additive Proppant		Type PW 30/50		Amount 127,702.0		Units lb		Sand Size 30/50	
14,145.0	6330.7	98.5																Additive Proppant		Type PW 40/70		Amount 3,019.0		Units lb		Sand Size 40/70	
14,451.8	6319.7	98.5															23	6/10/2015		11,462.2		11,464.7		5343.64		5484.67	
14,669.6	6320.1	98.5																Additive Proppant		Type PW 30/50		Amount 127,695.0		Units lb		Sand Size 30/50	

Page 6/7



Lease Review
Well Name: HORSETAIL 08D-1704

API Number 051234102401				WPC ID 1CO0761188				Well Permit Number				Field Name Wildcat				County Weld				State CO							
Well Configuration Type Lateral/Horizontal								Orig KB Elv (ft) 4,983.20				Ground Elevation (ft) 4,962.20				Casing Flange Elevation (ft)				Tubing Head Elevation (ft)				Total Depth (ftKB) 16,045.0			
Original Spud Date 4/10/2015				Completion Date 6/17/2015				Asset Group Redtail				Responsible Engineer Charles Ohlson				N/S Dist (ft) 381.0				N/S Ref FNL		E/W Dist (ft) 590.0				E/W Ref FWL	
Lot		Quarter 1 NW		Quarter 2 NW		Quarter 3		Quarter 4		Section 8		Section Suffix		Section Type		Township 10		Township N/S Dir N		Range 57		Range E/W Dir W		Meridian			
Lateral/Horizontal - Sidetrack 1, 9/11/2015 10:22:07 AM												Additive Proppant				Type PW 40/70				Amount 2,670.0		Units lb		Sand Size 40/70			
MD (ftKB)		D (ft KB)		n ()		c ()		l ()		Vertical schematic (actual)		Logs		Stg # 40		Start Date 6/17/2015		Top Depth (ftKB) 7,388.0		Bottom Depth (ftKB) 7,574.0		Vol Clean Pump (bbl) 5425.78		Vol Slurry (bbl) 5570.56			
89.9		89.9		89.9		89.9		89.9						89.9		89.9		89.9		89.9		89.9		89.9		89.9	
1,649.6		1,649.6		1,649.6		1,649.6		1,649.6						Additive Proppant		Type PW 30/50		Amount 115,463.0		Units lb		Sand Size 30/50					
4,873.0		4,873.0		4,873.0		4,873.0		4,873.0						Additive Proppant		Type PW 40/70		Amount 2,760.0		Units lb		Sand Size 40/70					
5,145.3		5,145.3		5,145.3		5,145.3		5,145.3						Stg # 41		Start Date 6/17/2015		Top Depth (ftKB) 7,143.0		Bottom Depth (ftKB) 7,326.0		Vol Clean Pump (bbl) 5350.19		Vol Slurry (bbl) 5493.78			
6,249.0		6,249.0		6,249.0		6,249.0		6,249.0						Additive Proppant		Type PW 30/50		Amount 111,962.0		Units lb		Sand Size 30/50					
6,367.8		6,367.8		6,367.8		6,367.8		6,367.8						Additive Proppant		Type PW 40/70		Amount 2,352.0		Units lb		Sand Size 40/70					
6,582.0		6,582.0		6,582.0		6,582.0		6,582.0						Stg # 42		Start Date 6/17/2015		Top Depth (ftKB) 6,897.0		Bottom Depth (ftKB) 7,081.0		Vol Clean Pump (bbl) 5390.65		Vol Slurry (bbl) 5538.98			
6,648.0		6,648.0		6,648.0		6,648.0		6,648.0						Additive Proppant		Type PW 30/50		Amount 116,473.0		Units lb		Sand Size 30/50					
6,869.4		6,869.4		6,869.4		6,869.4		6,869.4						Additive Proppant		Type PW 40/70		Amount 2,022.0		Units lb		Sand Size 40/70					
6,992.1		6,992.1		6,992.1		6,992.1		6,992.1						Stg # 43		Start Date 6/17/2015		Top Depth (ftKB) 6,646.0		Bottom Depth (ftKB) 6,834.0		Vol Clean Pump (bbl) 5391.04		Vol Slurry (bbl) 5537.94			
7,143.0		7,143.0		7,143.0		7,143.0		7,143.0						Additive Proppant		Type PW 30/50		Amount 112,663.0		Units lb		Sand Size 30/50					
7,326.1		7,326.1		7,326.1		7,326.1		7,326.1						Additive Proppant		Type PW 40/70		Amount 1,795.0		Units lb		Sand Size 40/70					
7,481.0		7,481.0		7,481.0		7,481.0		7,481.0						Stg # 44		Start Date 6/17/2015		Top Depth (ftKB) 6,393.0		Bottom Depth (ftKB) 6,584.0		Vol Clean Pump (bbl) 5280.95		Vol Slurry (bbl) 5423.57			
7,609.3		7,609.3		7,609.3		7,609.3		7,609.3						Additive Proppant		Type PW 30/50		Amount 118,270.0		Units lb		Sand Size 30/50					
7,826.1		7,826.1		7,826.1		7,826.1		7,826.1						Additive Proppant		Type PW 40/70		Amount 2,713.0		Units lb		Sand Size 40/70					
7,895.0		7,895.0		7,895.0		7,895.0		7,895.0						Tubing - Production set at 5,036.9ftKB on 8/11/2015 06:00													
8,118.1		8,118.1		8,118.1		8,118.1		8,118.1						Set Depth (ftKB) 5,036.9		Comment						Run Date 8/11/2015				Pull Date	
8,241.1		8,241.1		8,241.1		8,241.1		8,241.1						Item Des		OD (in)		ID (in)		Len (ft)		Top (ftKB)		Btm (ftKB)			
8,395.0		8,395.0		8,395.0		8,395.0		8,395.0						Tubing Hanger		7		2.875		0.50		21.0		21.5			
8,586.9		8,586.9		8,586.9		8,586.9		8,586.9						Tubing		2 7/8		2.441		4,788.90		21.5		4,810.4			
8,740.2		8,740.2		8,740.2		8,740.2		8,740.2						Tubing Sub		2 7/8		2.441		6.12		4,810.4		4,816.5			
8,867.8		8,867.8		8,867.8		8,867.8		8,867.8						ESP - Pump		4				54.04		4,816.5		4,870.6			
9,076.1		9,076.1		9,076.1		9,076.1		9,076.1						ESP - Intake		4				2.60		4,870.6		4,873.2			
9,148.0		9,148.0		9,148.0		9,148.0		9,148.0						Seal		4				12.20		4,873.2		4,885.4			
9,362.2		9,362.2		9,362.2		9,362.2		9,362.2						ESP - Motor		4 1/2				20.78		4,885.4		4,906.1			
9,487.9		9,487.9		9,487.9		9,487.9		9,487.9						Desander		7				5.60		4,906.1		4,911.7			
9,642.1		9,642.1		9,642.1		9,642.1		9,642.1						Tubing		2 7/8		2.441		125.20		4,911.7		5,036.9			
9,833.0		9,833.0		9,833.0		9,833.0		9,833.0						Rod Strings													
10,082.7		10,082.7		10,082.7		10,082.7		10,082.7						<des> on <dttmrun>													
10,302.5		10,302.5		10,302.5		10,302.5		10,302.5						Rod Description				Run Date				Pull Date					
10,596.1		10,596.1		10,596.1		10,596.1		10,596.1						Item Des				OD (in)		Len (ft)		Top (ftKB)		Btm (ftKB)			
10,814.6		10,814.6		10,814.6		10,814.6		10,814.6																			
11,034.1		11,034.1		11,034.1		11,034.1		11,034.1						Other Strings													
11,366.5		11,366.5		11,366.5		11,366.5		11,366.5						Set Depth (ftKB)		Comment						Run Date				Pull Date	
11,587.3		11,587.3		11,587.3		11,587.3		11,587.3						Item Des				OD (in)		Len (ft)		Top (ftKB)		Btm (ftKB)			
11,887.1		11,887.1		11,887.1		11,887.1		11,887.1																			
12,101.0		12,101.0		12,101.0		12,101.0		12,101.0						Other In Hole													
12,432.4		12,432.4		12,432.4		12,432.4		12,432.4						Des		OD (in)		Run Date		Pull Date		Top (ftKB)		Btm (ftKB)			
12,653.2		12,653.2		12,653.2		12,653.2		12,653.2						Frac Plug		4		6/17/2015		6/30/2015		6,618.0		6,620.0			
12,948.2		12,948.2		12,948.2		12,948.2		12,948.2						Frac Plug		4		6/17/2015		6/30/2015		6,869.0		6,871.0			
13,167.7		13,167.7		13,167.7		13,167.7		13,167.7						Frac Plug		4		6/17/2015		6/30/2015		7,115.0		7,117.0			
13,381.2		13,381.2		13,381.2		13,381.2		13,381.2						Frac Plug		4		6/17/2015		6/30/2015		7,360.0		7,362.0			
13,598.8		13,598.8		13,598.8		13,598.8		13,598.8						Frac Plug		4		6/17/2015		6/30/2015		7,606.0		7,608.0			
13,926.2		13,926.2		13,926.2		13,926.2		13,926.2						Frac Plug		4		6/17/2015		6/30/2015		7,865.0		7,867.0			
14,145.0		14,145.0		14,145.0		14,145.0		14,145.0						Frac Plug		4		6/16/2015		6/30/2015		8,118.0		8,120.0			
14,451.8		14,451.8		14,451.8		14,451.8		14,451.8						Frac Plug		4		6/16/2015		6/30/2015		8,363.0		8,365.0			
14,669.6		14,669.6		14,669.6		14,669.6		14,669.6						Frac Plug		4		6/16/2015		6/30/2015		8,619.0		8,621.0			
14,841.2		14,841.2		14,841.2		14,841.2		14,841.2						Frac Plug		4		6/16/2015		6/30/2015		8,865.0		8,867.0			
15,093.8		15,093.8		15,093.8		15,093.8		15,093.8						Frac Plug		4		6/15/2015		6/30/2015		9,116.0		9,118.0			
15,268.4		15,268.4		15,268.4		15,268.4		15,268.4						Frac Plug		4		6/15/2015		7/1/2015		9,362.0		9,364.0			
15,526.6		15,526.6		15,526.6		15,526.6		15,526.6						Frac Plug		4		6/14/2015		7/1/2015		9,614.0		9,616.0			
15,706.7		15,706.7		15,706.7		15,706.7		15,706.7						Frac Plug		4		6/14/2015		7/1/2015		9,868.0		9,870.0			
16,000.0		16,000.0		16,000.0		16,000.0		16,000.0						Bottom Hole Cores													
														Date		Core #		Top (ftKB)		Btm (ftKB)		Recov (ft)					