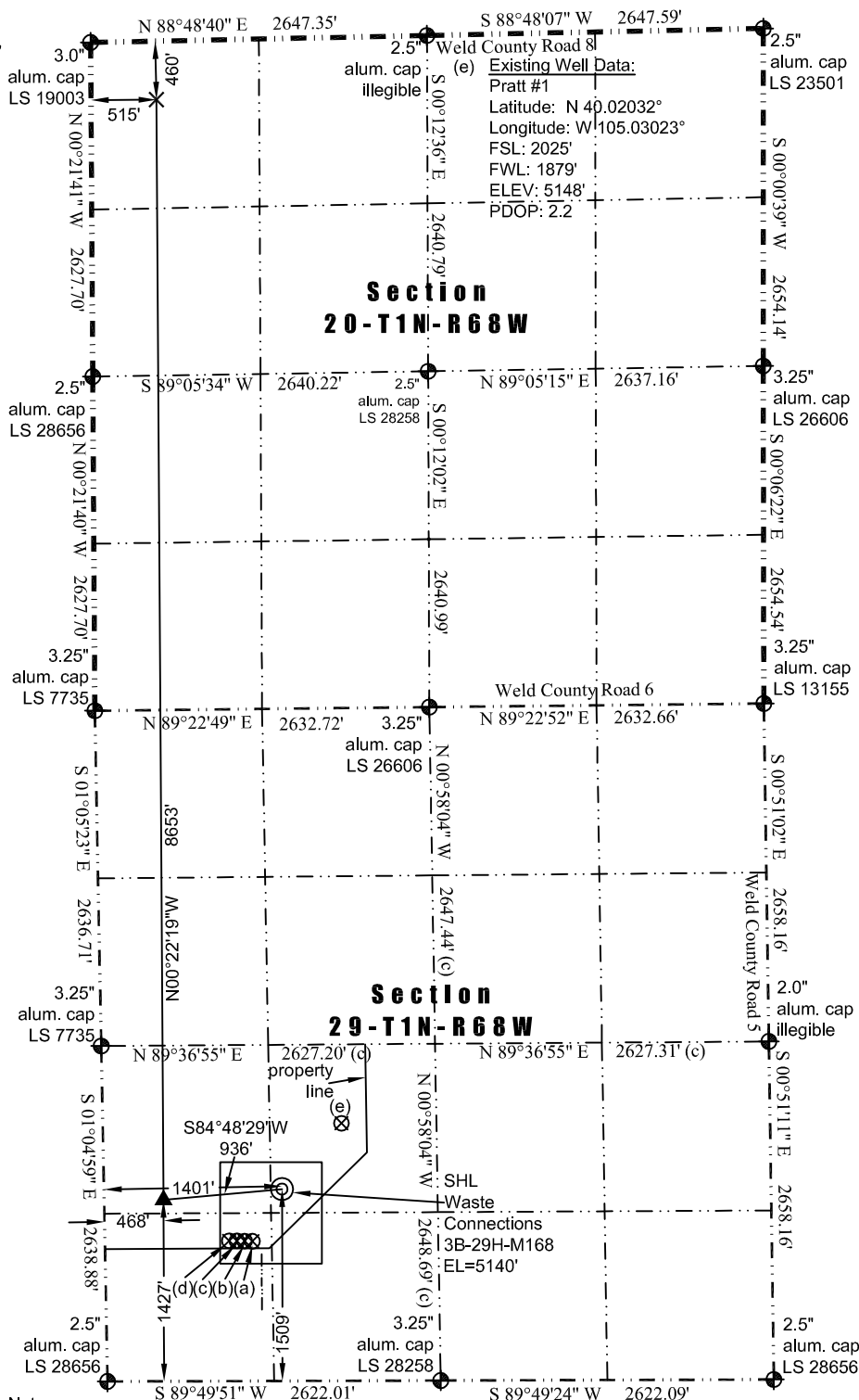




# WELL LOCATION CERTIFICATE

THIS MAP DOES NOT REPRESENT A BOUNDARY SURVEY

Washburn Land Surveying  
www.WashburnSurveying.com  
970-232-9645



In accordance with a request from Jay Knutson of EnCana Oil & Gas (USA) Inc., Washburn Land Surveying, LLC has determined the location of the **Waste Connections 3B-29H-M168** well site to be SHL: 1509' FSL and 1401' FWL, (TPZ: 1427' FSL and 468' FWL), (BHL: 460' FNL and 515' FWL), as measured at ninety (90) degrees from the section lines of Sections 20 and 29, Township 1 North, Range 68 West of the 6th Principal Meridian, Weld County Colorado.

- (a) Existing Well Data:  
SRC Pratt 24-29D  
Latitude: N 40.01778°  
Longitude: W 105.03275°  
FSL: 1099'  
FWL: 1160'  
ELEV: 5142'  
PDOP: 1.9
- (b) Existing Well Data:  
Pratt #2  
Latitude: N 40.01778°  
Longitude: W 105.03282°  
FSL: 1100'  
FWL: 1141'  
ELEV: 5142'  
PDOP: 1.9
- (c) Existing Well Data:  
SRC Pratt 13-29D  
Latitude: N 40.01778°  
Longitude: W 105.03288°  
FSL: 1100'  
FWL: 1122'  
ELEV: 5141'  
PDOP: 2.1
- (d) Existing Well Data:  
SRC Pratt 14-29D  
Latitude: N 40.01778°  
Longitude: W 105.03296°  
FSL: 1100'  
FWL: 1102'  
ELEV: 5141'  
PDOP: 2.1

## LEGEND

- ⊗ - Existing Well
- ⊕ - Found Survey Monument
- (c) - Calculated Dimension
- ⊙ - Surface Hole Location (SHL)
- ▲ - Top of Producing Zone (TPZ)
- × - Bottom Hole Location (BHL)

## Nearest:

Building Unit: 1573' northwest  
Building: 1573' northwest  
Above Ground Utility: 3965' northeast  
Public Road: 1448' southwest  
Railroad: 9765' northwest  
Property Line: 263' southeast  
Well Window: SHL is 213' inside  
Existing Well: SRC Pratt 24-29D,  
472' southwest

## Proposed Well Data:

Latitude: (SHL: N 40.018902°)  
(TPZ: N 40.018683°)  
(BHL: N 40.042436°)  
Longitude: (SHL: W 105.031908°)  
(TPZ: W 105.035237°)  
(BHL: W 105.035276°)  
PDOP: 2.1

## Notes:

- 1) Bearings and distances based on NAD 83 Colorado North State Plane Coordinate, using RTK GPS observations taken 2/20/13 by operator John Rice.
- 2) Conversion factor to ground (1.0002793972).
- 3) Elevations based on NAVD 88 GPS heights and Geoid 2003 corrections.
- 4) See Location Drawing for visible improvements within 500 feet of Pad Site.
- 5) The surface use is a uncultivated field.
- 6) Revised/extend BHL

**NOTICE:** According to Colorado law you must commence any legal action based upon any defect in this W.L.C. within three years after you first discover such defect. In no event may any action based upon any defect in this W.L.C. be commenced more than ten years from this said date of the certification shown hereon.

I hereby certify that this Well Location Certificate was prepared by me or under my direct supervision on 7/29/2015 for and on behalf of EnCana Oil & Gas (USA) Inc. That it is not a Land Survey Plat or an Improvement Survey Plat and that it is not to be relied upon for establishment of fences, buildings, or other future improvement lines.

John Robert McGhee, L.S.#38219  
Well: Waste Connections 3B-29H-M168 WLC.

