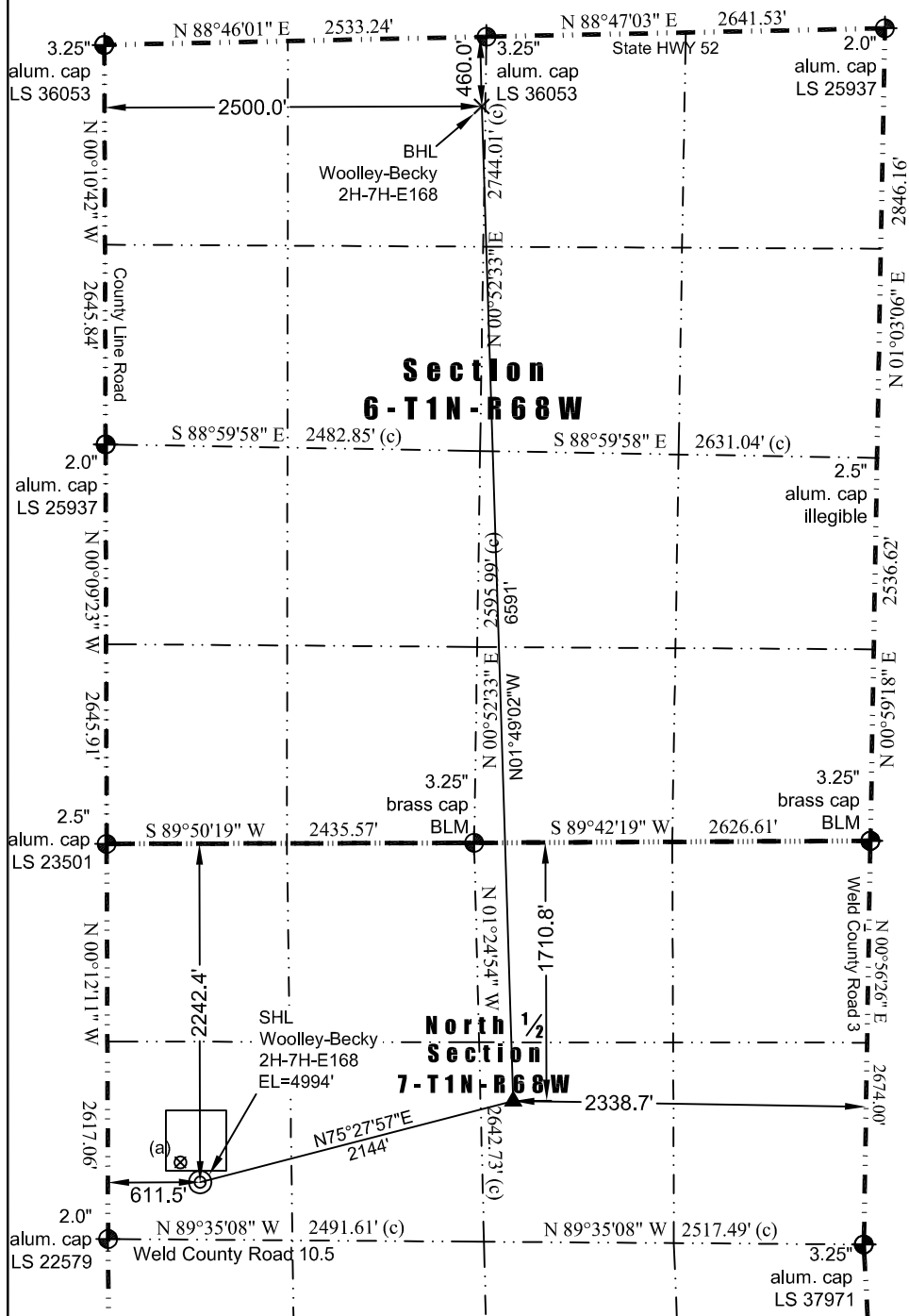




# WELL LOCATION CERTIFICATE

THIS MAP DOES NOT REPRESENT A BOUNDARY SURVEY

Washburn Land Surveying  
www.WashburnSurveying.com  
970-232-9645



Scale 1" = 1200'  
0 1200  
approximate scale

## LEGEND

- ⊗ - Existing Well
- ⊕ - Found Survey Monument
- (c) - Calculated Dimension
- ⊙ - Surface Hole Location (SHL)
- ▲ - Top of Producing Zone (TPZ)
- × - Bottom Hole Location (BHL)

In accordance with a request from Jay Knutson of EnCana Oil & Gas (USA) Inc., Washburn Land Surveying, LLC has determined the location of the **Woolley-Becky 2H-7H-E168** well site to be SHL: 2242.4' FNL and 611.5' FWL, (TPZ: 1710.8' FNL and 2338.7' FEL), (BHL: 460.0' FNL and 2500.0' FWL), as measured at ninety (90) degrees from the section lines of Sections 6 and 7, Township 1 North, Range 68 West of the 6th Principal Meridian, Weld County Colorado.

## (a) Existing Well Data:

Woolley 12-7  
Latitude: N 40.067215°  
Longitude: W 105.053746°  
FNL: 2111'  
FWL: 481'  
ELEV: 4993'  
PDOP: 2.0

## Proposed Well Data:

Latitude: (SHL: 40.066854°)  
(TPZ: 40.068302°)  
(BHL: 40.086390°)  
Longitude: (SHL: 105.053282°)  
(TPZ: 105.045857°)  
(BHL: 105.046483°)  
PDOP: 2.0

## Nearest:

Building Unit: 820' southeast  
Building: 688' southeast  
Above Ground Utility: 362' south  
Public Road: 382' south  
Railroad: 4,204' southeast

## Property Line: 381' south

Well window: SHL is 75' outside  
High Occupancy Building Unit: 2,374' northwest  
Existing Well: Woolley 12-7, 185' northwest

## Notes:

- 1) Bearings and distances based on NAD 83 Colorado North State Plane Coordinate, using RTK GPS observations taken 1/21/15 by operator Chris Bettencourt.
- 2) Conversion factor to ground (1.0002793972).
- 3) Elevations based on NAVD 88 GPS heights and Geoid 2009 corrections.
- 4) See Location Drawing for visible improvements within 500 feet of Pad Site.
- 5) The surface use is a uncultivated field.

NOTICE: According to Colorado law you must commence any legal action based upon any defect in this W.L.C. within three years after you first discover such defect. In no event may any action based upon any defect in this W.L.C. be commenced more than ten years from this said date of the certification shown hereon.

I hereby certify that this Well Location Certificate was prepared by me or under my direct supervision on 7/1/2015 for and on behalf of EnCana Oil & Gas (USA) Inc. That it is not a Land Survey Plat or an Improvement Survey Plat and that it is not to be relied upon for establishment of fences, buildings, or other future improvement lines.

John Robert McGeehee LS#38219  
Well: Woolley-Becky 2H-7H-E168 WLC