

1801 Broadway
Suite 500
Denver, Colorado 80202



Allison Linz
Regulatory Technician
Tel: 303.398.0355
E-mail: alinz@gwogco.com

August 11, 2015

Colorado Oil and Gas Conservation Commission
1120 Lincoln Street, Suite 801
Denver, Colorado 80203

RE: **Proposed Wellbore Spacing Unit**
Leffler FE 20-022HC

Codell New Drill
Township 6 North, Range 66 West, 6th P.M.
NENE Section 21
Weld County, Colorado

Dear Director:

Great Western Operating Company, LLC is planning to drill the above captioned well in accordance with the provisions of COGCC Rule 318A.e.

Great Western proposed wellbore spacing unit consists of:

- **N2 Sec 20, N2 Sec 21**
- **640 Acres**

The 30 day notification time period has passed and we have not received any objections to such well locations or proposed spacing unit, therefore Great Western hereby requests the Director to approve the above mentioned well. Great Western Operating Company, LLC respectfully requests that the COGCC review the enclosed map illustrating the proposed wellbore spacing unit.

Respectfully,

Allison Linz

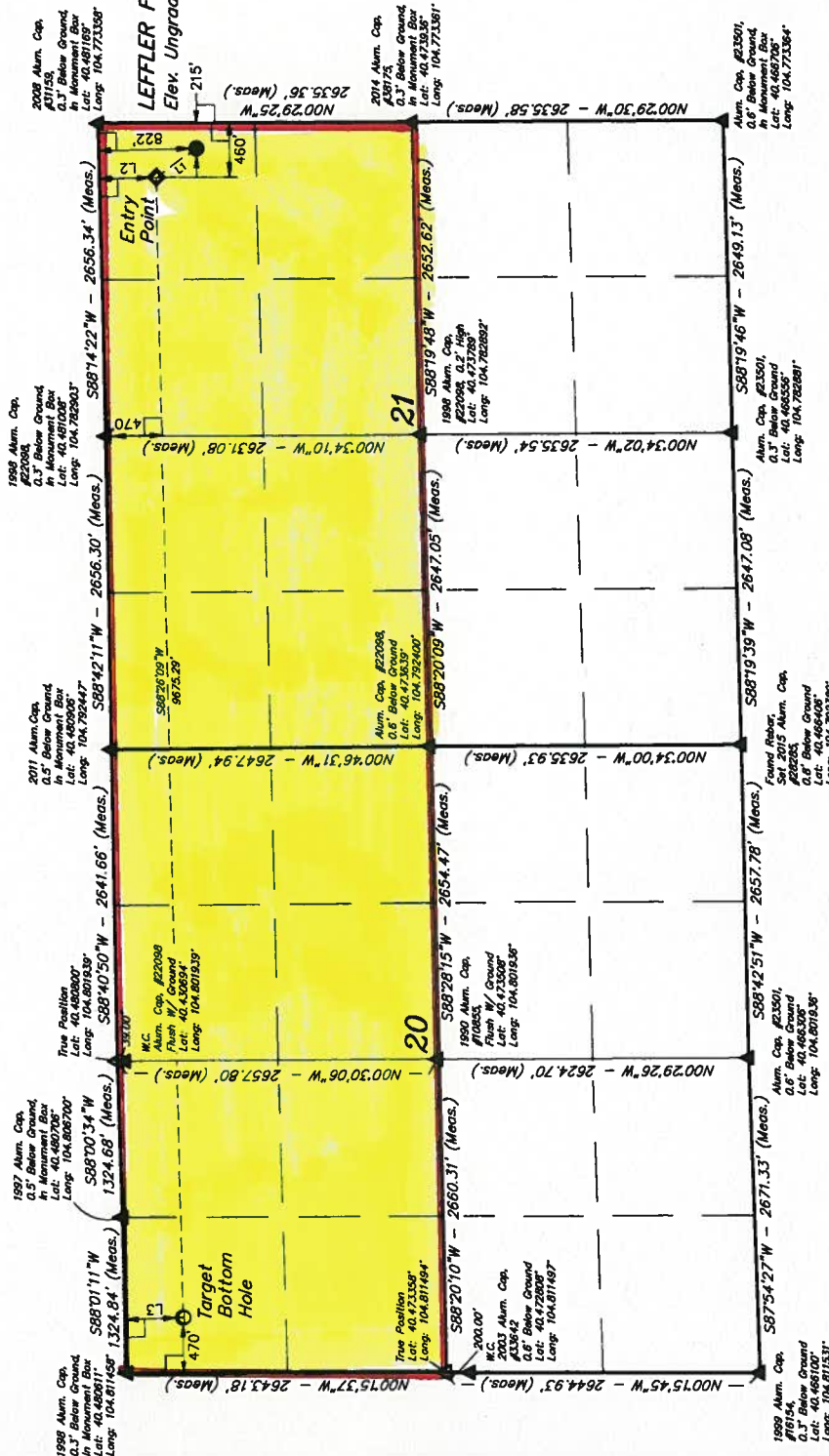
Allison Linz
Regulatory Technician
Great Western Operating Company, LLC

T6N, R66W, 6th P.M.

GREAT WESTERN OIL & GAS COMPANY
LEFFLER FE 20-022HC
NE 1/4 NE 1/4 SECTION 21, T6N, R66W, 6th P.M.
WELD COUNTY, COLORADO

BASIS OF BEARINGS

BASIS OF BEARINGS IS A GPS OBSERVATION
USGS COOPERATIVE BASE NETWORK CONTROL STATION,
DESIGNATION "VERMILYEA". NOS DATA SHEET LISTS THE
NAD 83 ELEVATION AS BEING 3026 FEET.



UELS, LLC
Corporate Office • 85 South 200 East
Vernal, UT 84078 • (435) 789-1017



SURVEYED BY: DALLAS NIELSEN, B.C.	DATE: 04-21-15
DRAWN BY: K.B.	DATE DRAWN: 04-23-15
SCALE: 1" = 100'	REVISED: 08-08-00
WELL LOCATION PLAT	

NAD 83 (SURFACE LOCATION)	NAD 83 (ENTRY POINT)
LATITUDE = 40°28'44.04" (40.478800) LONGITUDE = 104°46'26.88" (104.774133) NAD 27 (SURFACE LOCATION) LATITUDE = 40°28'44.10" (40.478817) LONGITUDE = 104°46'24.59" (104.773589)	LATITUDE = 40°28'47.39" (40.479831) LONGITUDE = 104°46'30.05" (104.775014) NAD 27 (ENTRY POINT) LATITUDE = 40°28'47.46" (40.479830) LONGITUDE = 104°46'28.16" (104.774489)

PDOP = 1.3