



Cement Bond
Gamma Ray / CCL
Log

Company Coleman Oil & Gas, Inc.
Well La Plata 34-7-34 #1
Field Blanco Ignacio
County La Plata State Colorado

Company Coleman Oil & Gas, Inc.
Well La Plata 34-7-34 #1
Field Blanco Ignacio
County La Plata
State Colorado

Location: API # : 05-067-09917
Section: 33, Township: 34N, Range: 7W
SHL: 232' FSL & 704' FEL
SEC TWP RGE
Permanent Datum Ground Level Elevation 6726'
Log Measured From K.B. 16' APD
Drilling Measured From K.B.
Other Services
Elevation
K.B. 6742
D.F. 6742
G.L. 6726'

Date 6-20-2015

Run Number	1	
Depth Driller	3799'	
Depth Logger	3734'	
Bottom Logged Interval	3734'	
Top Log Interval	Surface	
Open Hole Size	9.50"	
Type Fluid	Water	
Density / Viscosity	-	
Max. Recorded Temp.	-	
Estimated Cement Top	-	
Time Well Ready	ROA	
Time Logger on Bottom	See Log	
Equipment Number	LW-115	
Location	Farmington, NM	
Recorded By	W. Richardson	
Witnessed By	J. Maize	

Borehole Record				Tubing Record			
Run Number	Bit	From	To	Size	Weight	From	To
Casing Record		Size		Wgt/Ft		Top	Bottom
Surface String							
Prot. String							
Production String							
Liner							

<<< Fold Here >>>

All interpretations are opinions based on inferences from electrical or other measurements and we cannot and do not guarantee the accuracy or correctness of any interpretation, and we shall not, except in the case of gross or willful negligence on our part, be liable or responsible for any loss, costs, damages, or expenses incurred or sustained by anyone resulting from any interpretation made by any of our officers, agents or employees. These interpretations are also subject to our general terms and conditions set out in our current Price Schedule.

Comments



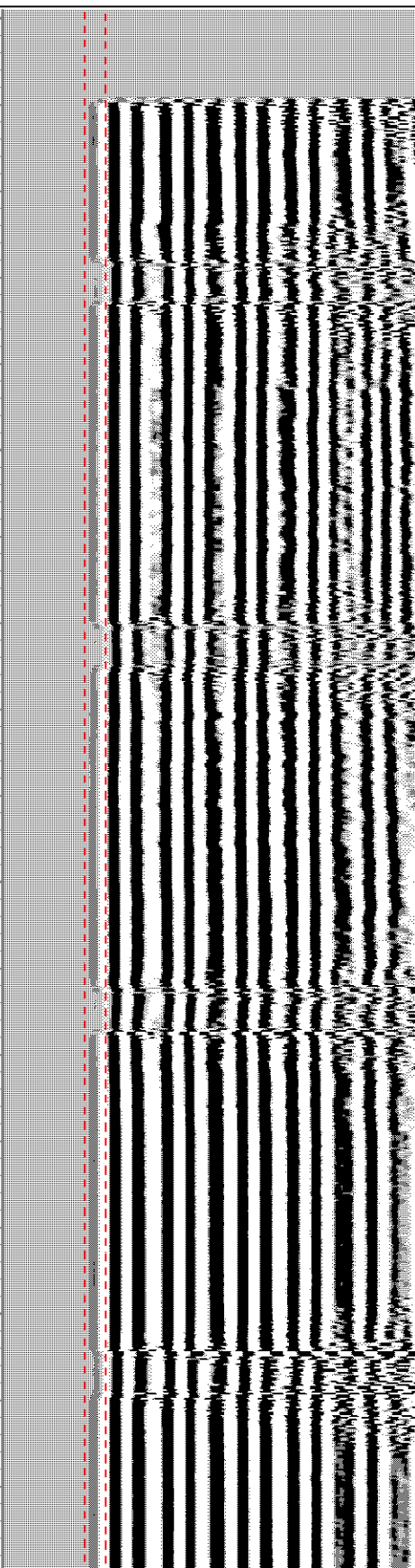
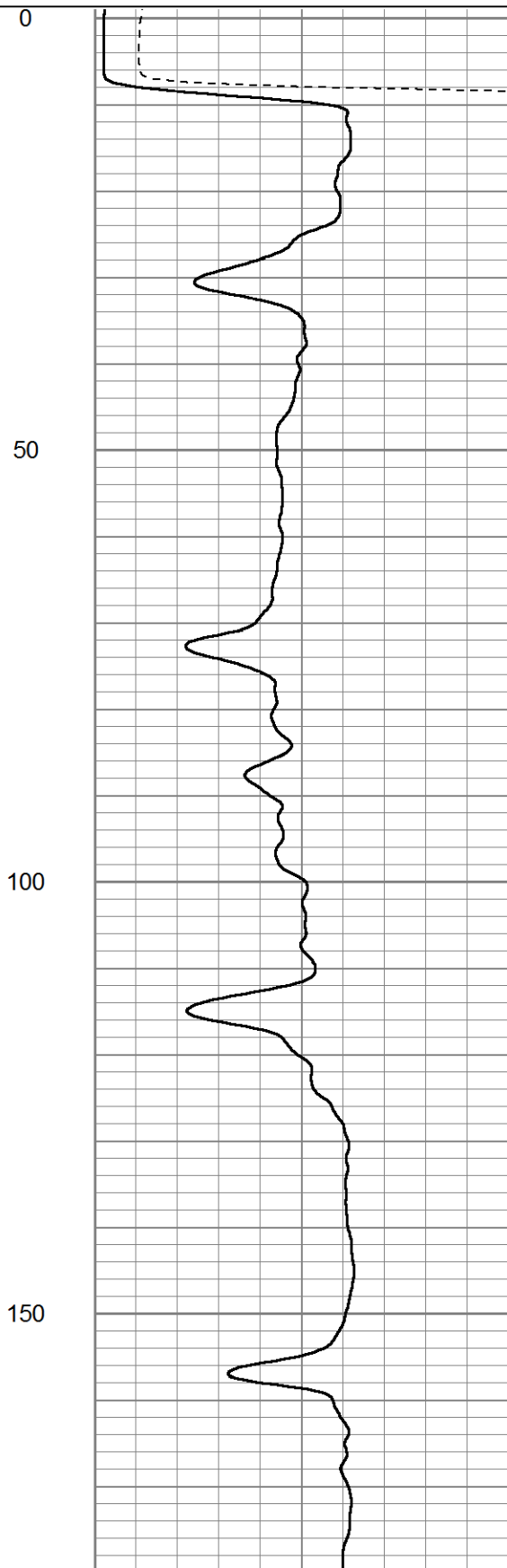
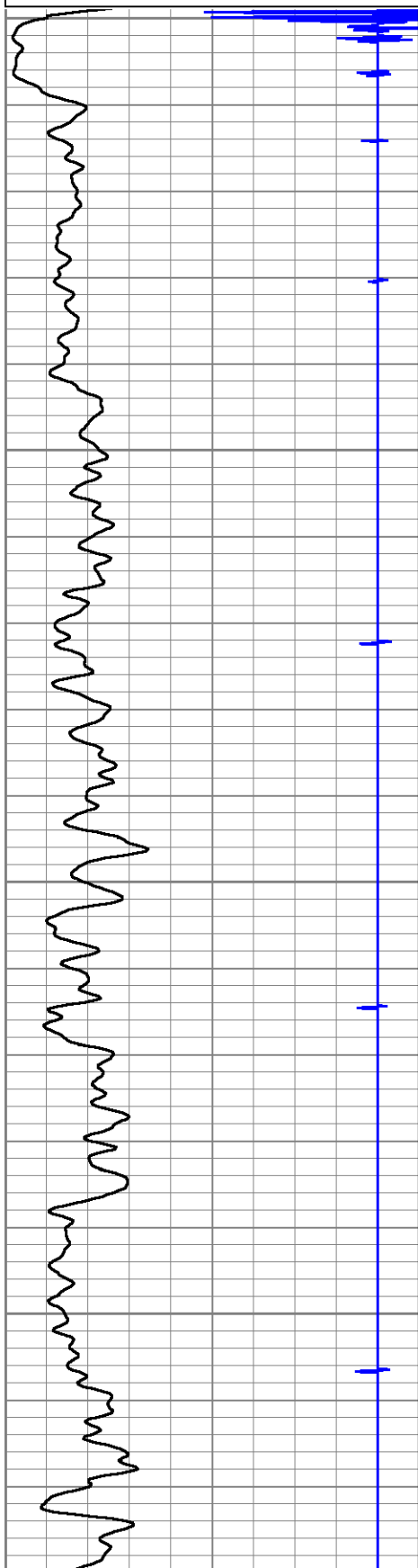
Main Pass 5"=100'

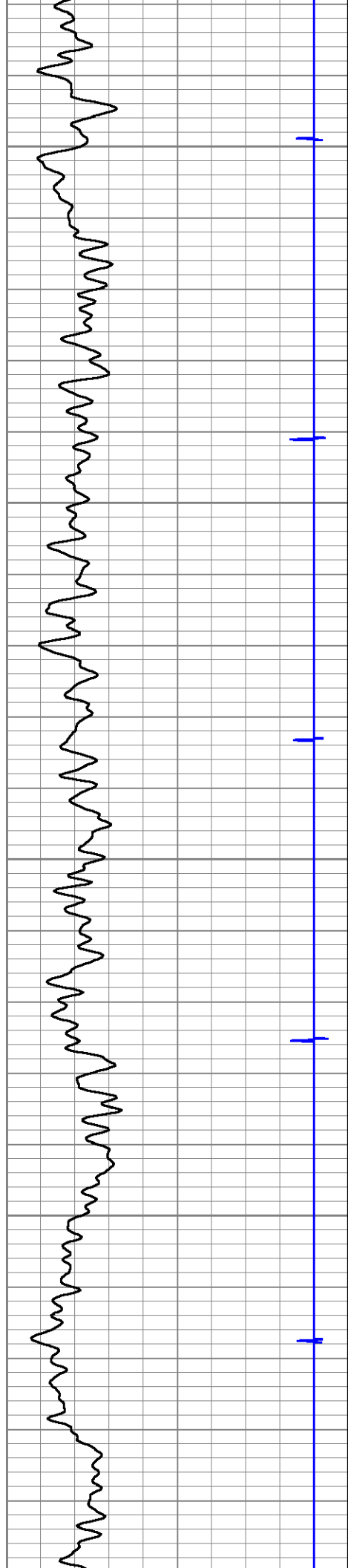
Database File: coleman_la_plata_34_7_34_1.db
Dataset Pathname: pass3.1
Presentation Format: cblwill
Dataset Creation: Sat Jun 20 10:05:24 2015 by Calc 7.0 B1
Charted by: Depth in Feet scaled 1:240

90	ccl	-10
0	GR (GAPI)	200
0	Line Speed (ft/min)	100

0	AMPLITUDE (mV)	100
0	Amplitude X5 (mV)	20

200	VDL	1200
Free Pipe Gate		





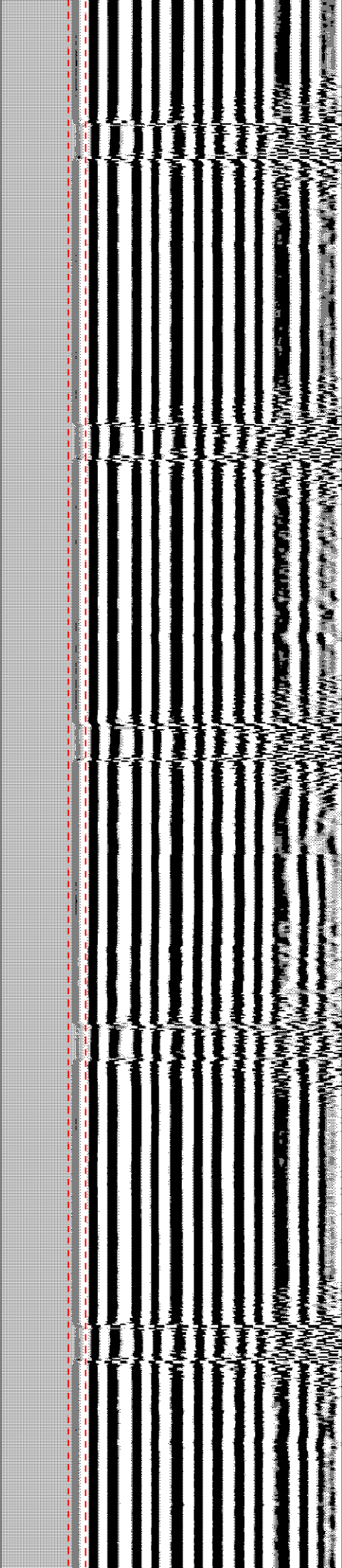
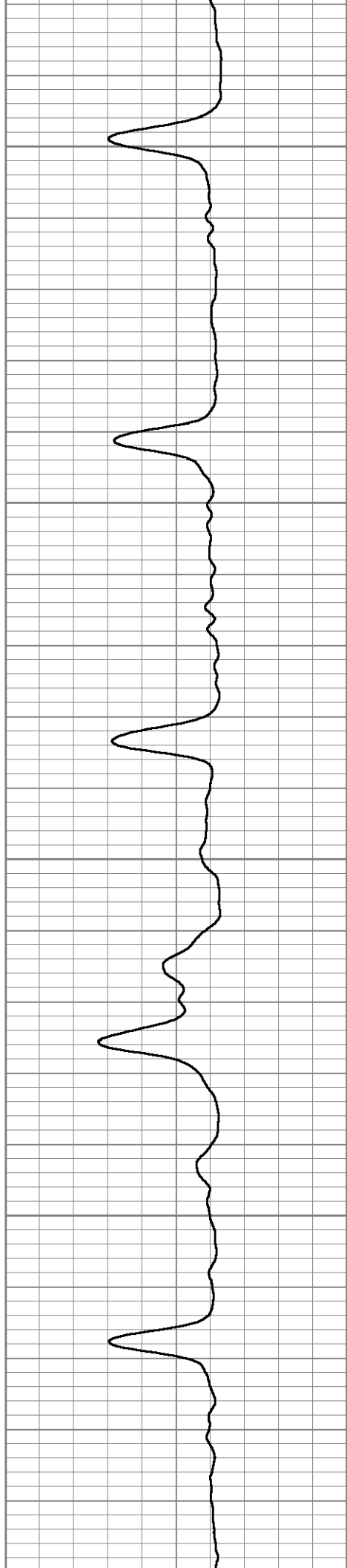
200

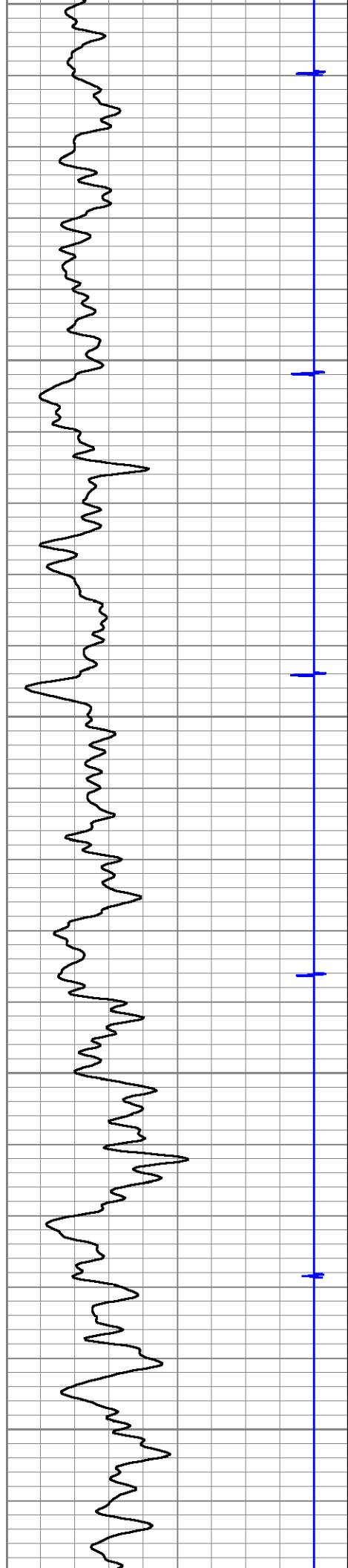
250

300

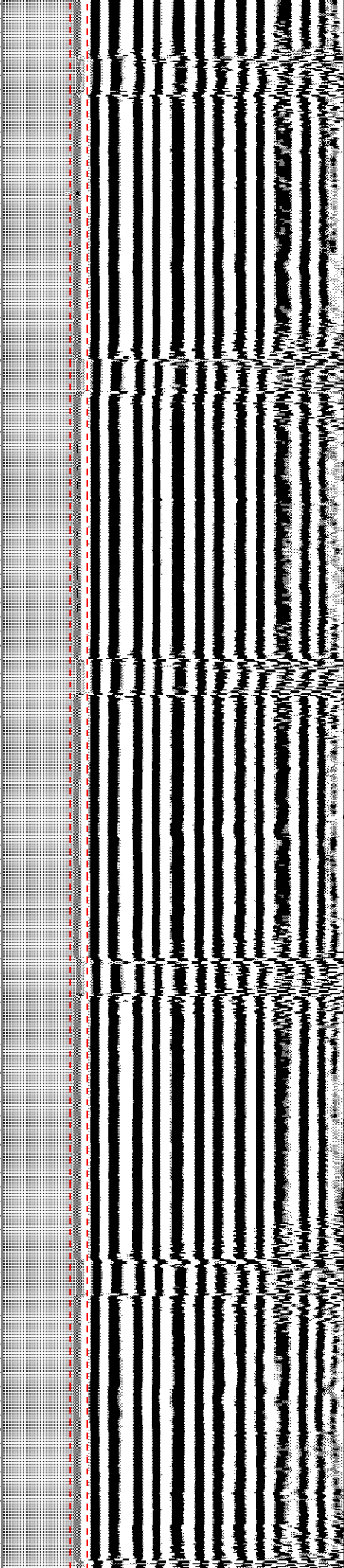
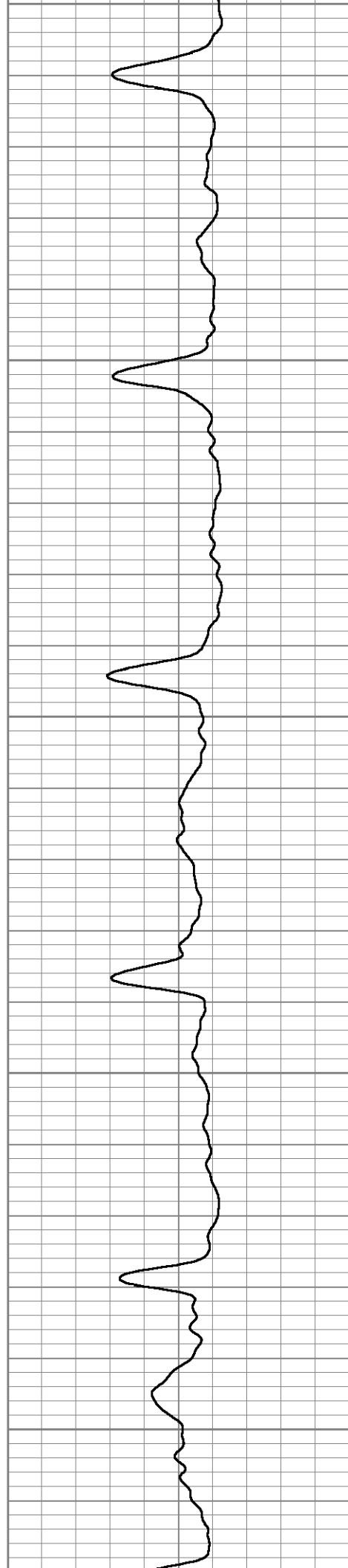
350

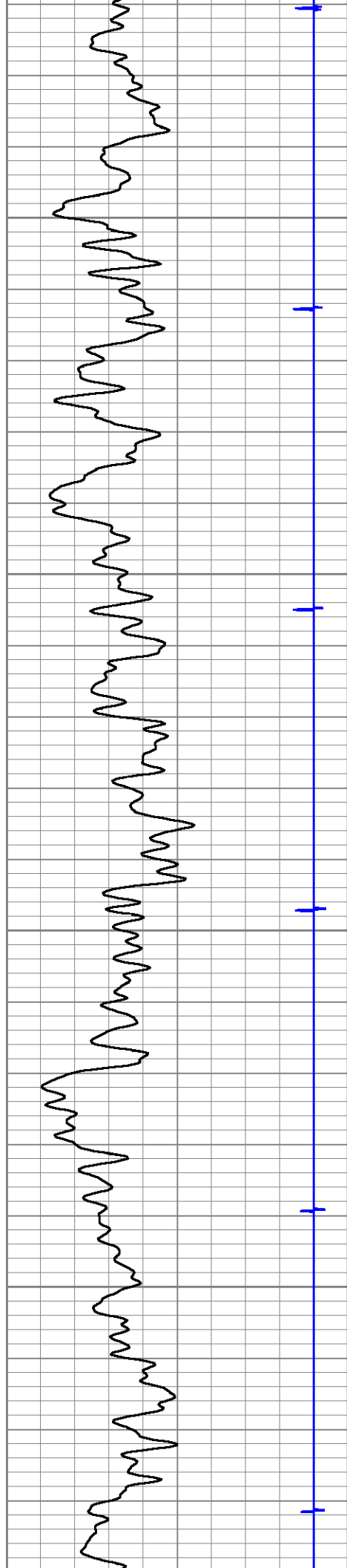
400





400
450
500
550
600



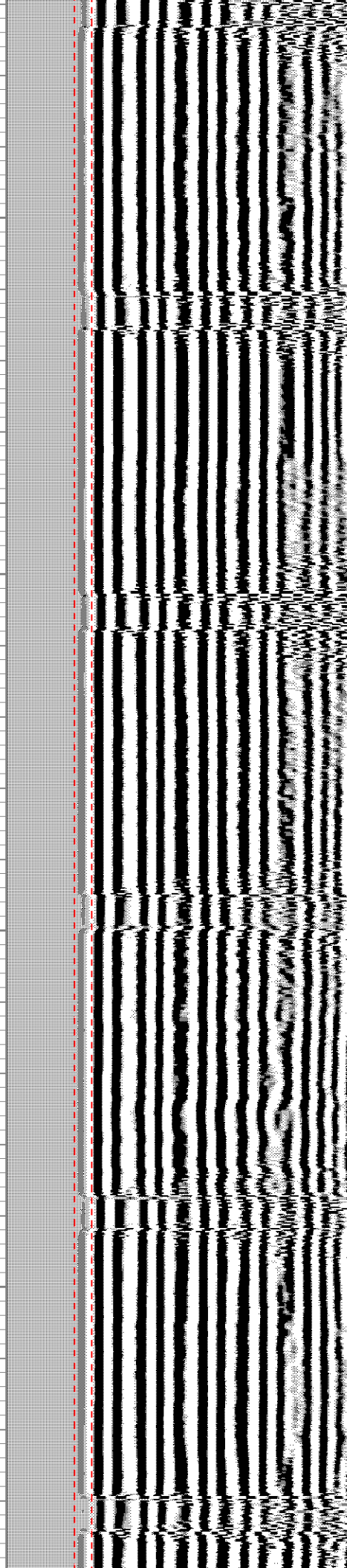
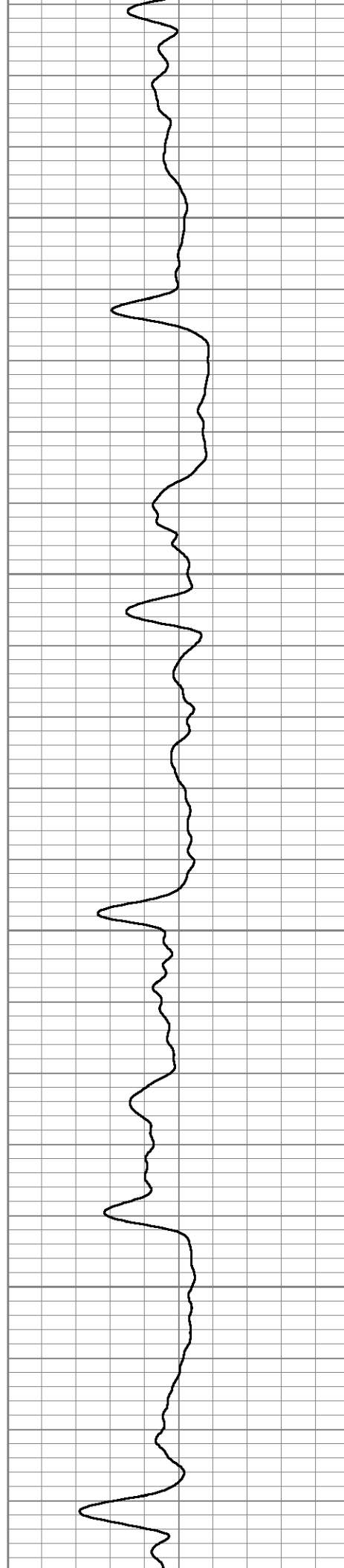


650

700

750

800





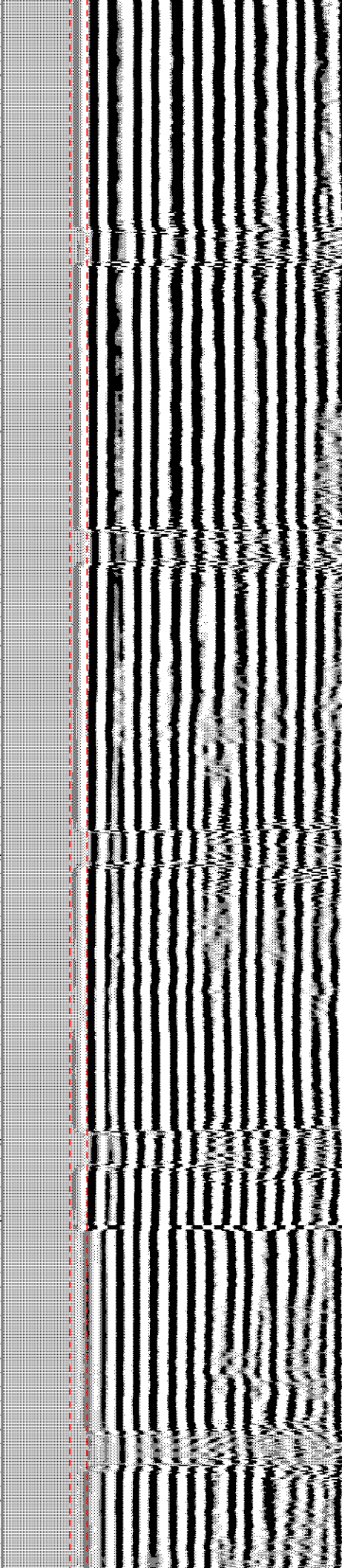
850

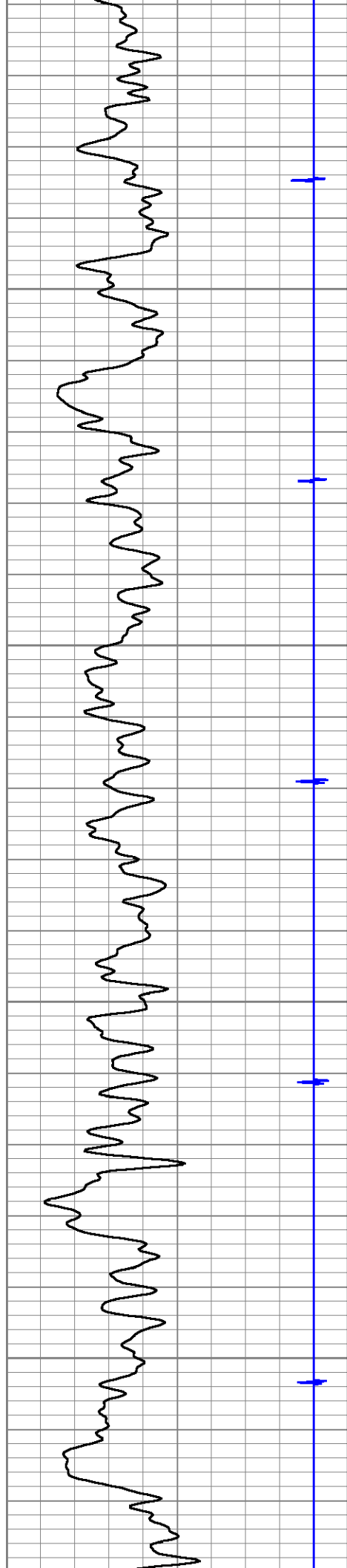
900

950

1000

1050



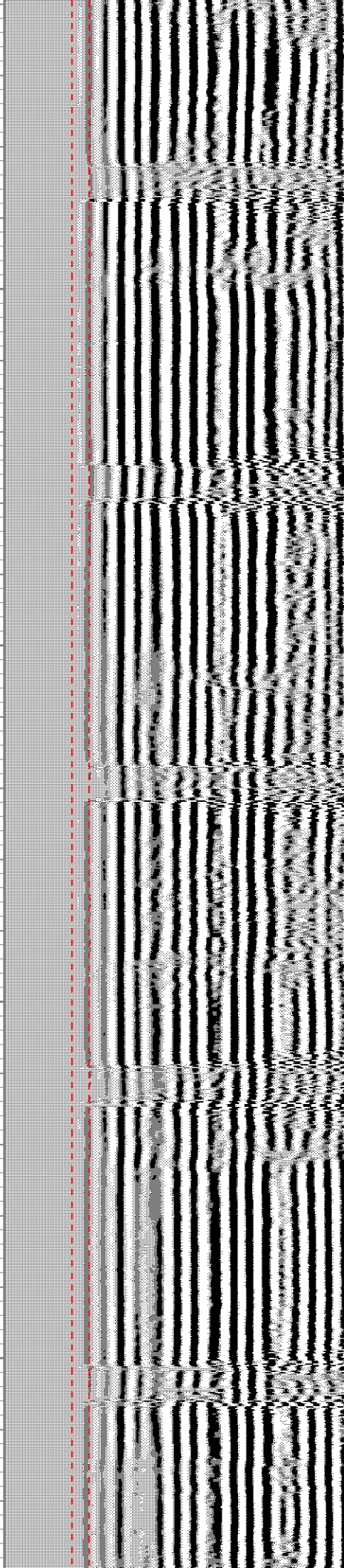
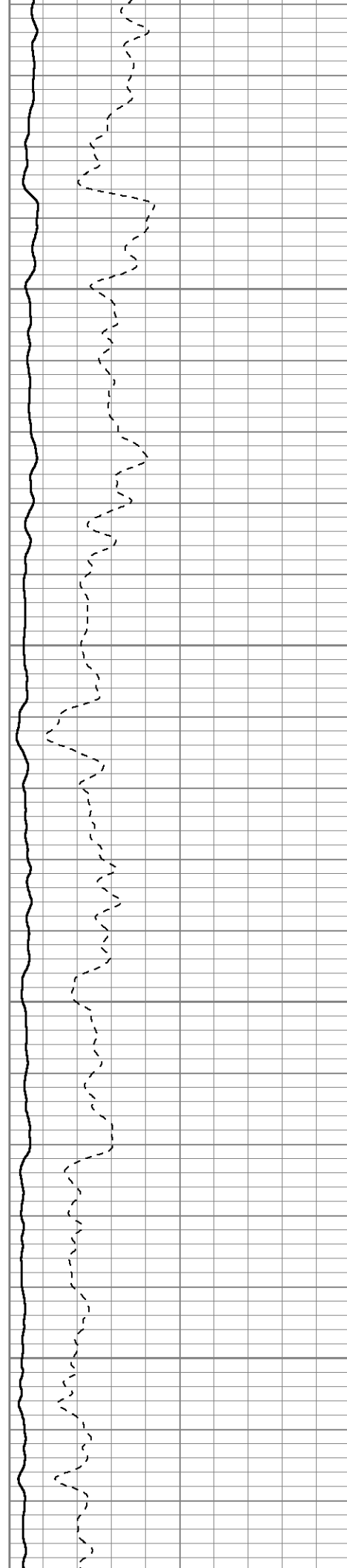


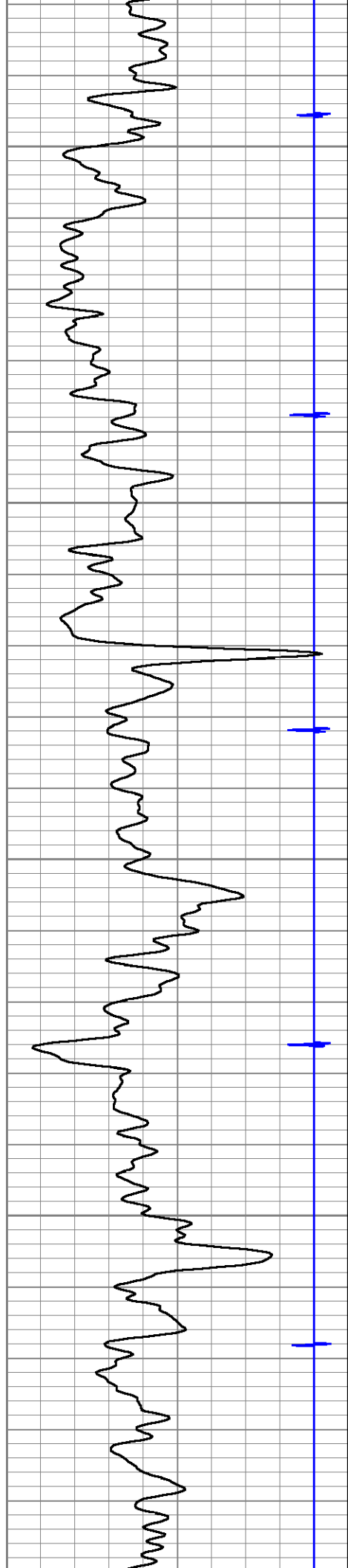
1100

1150

1200

1250





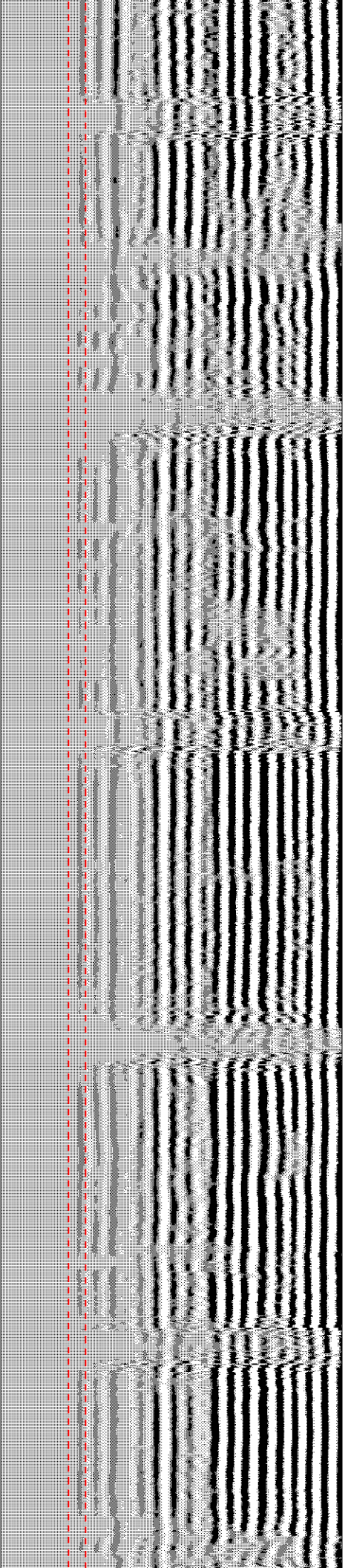
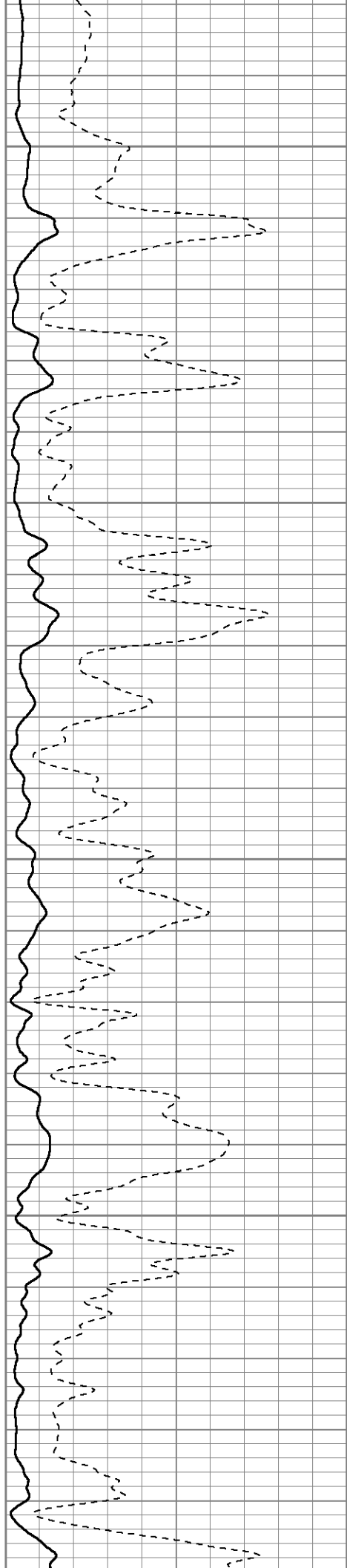
1300

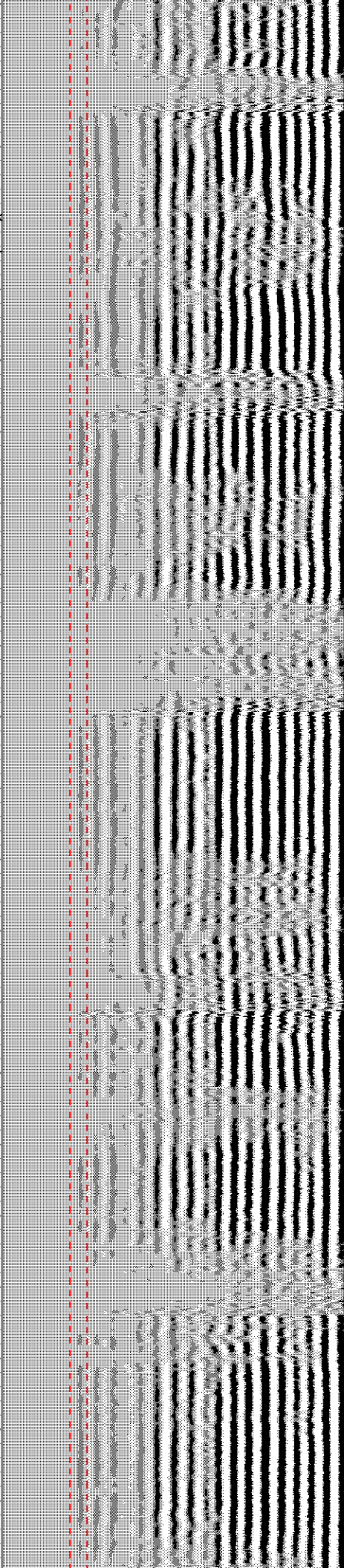
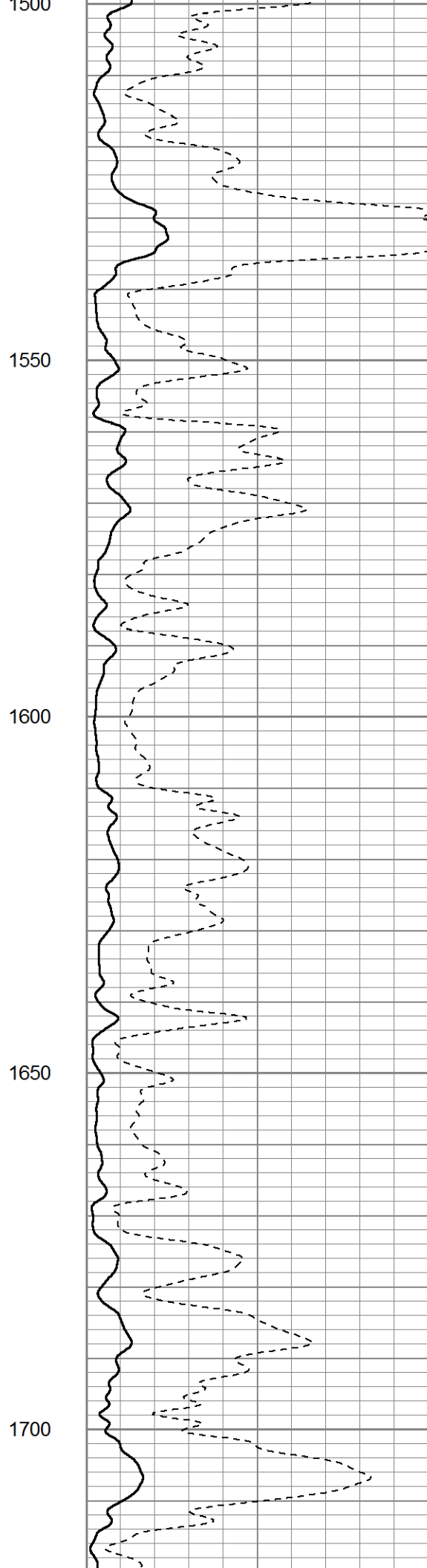
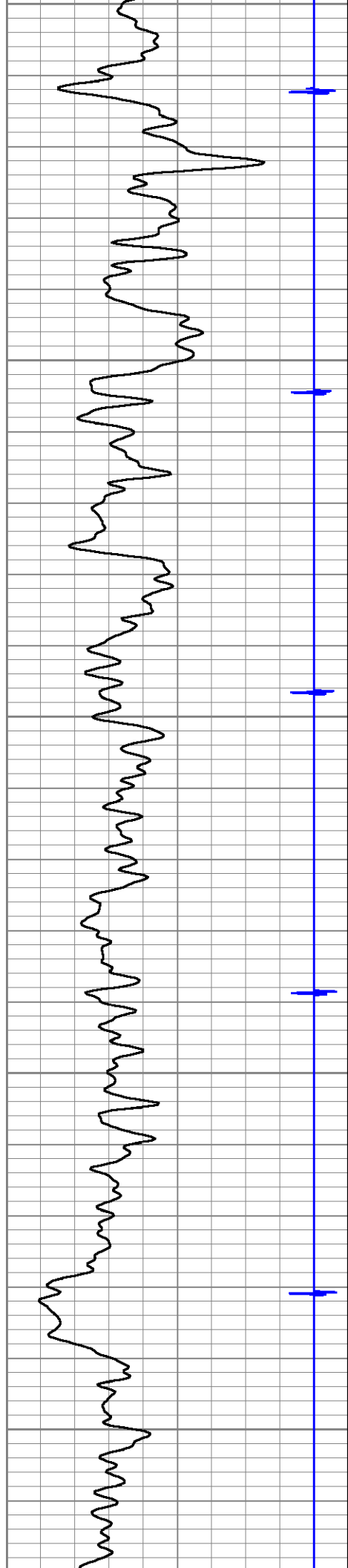
1350

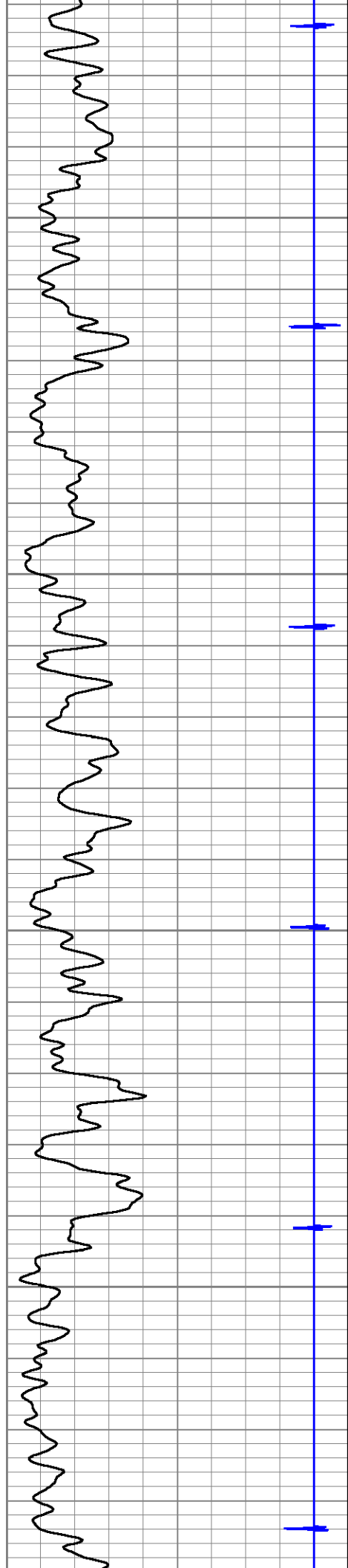
1400

1450

1500





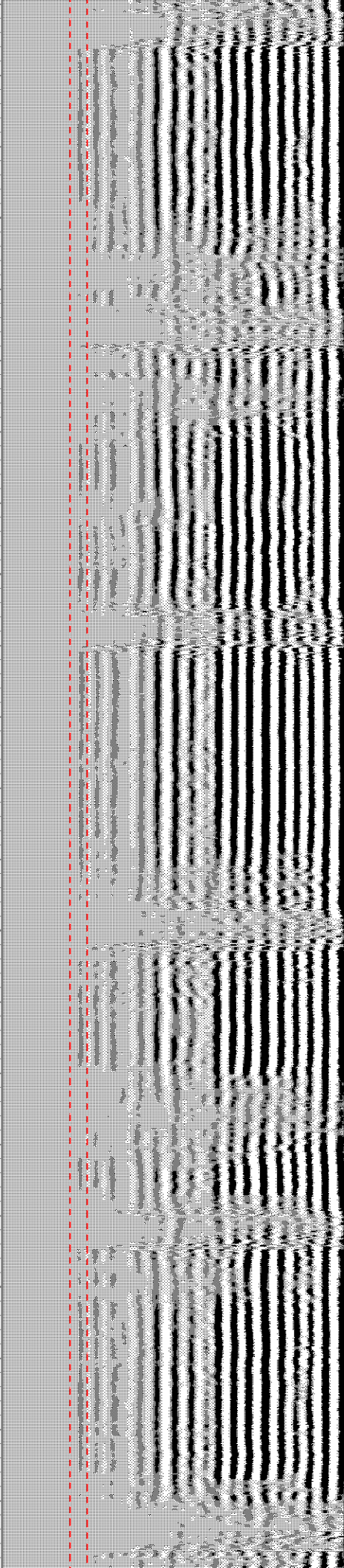
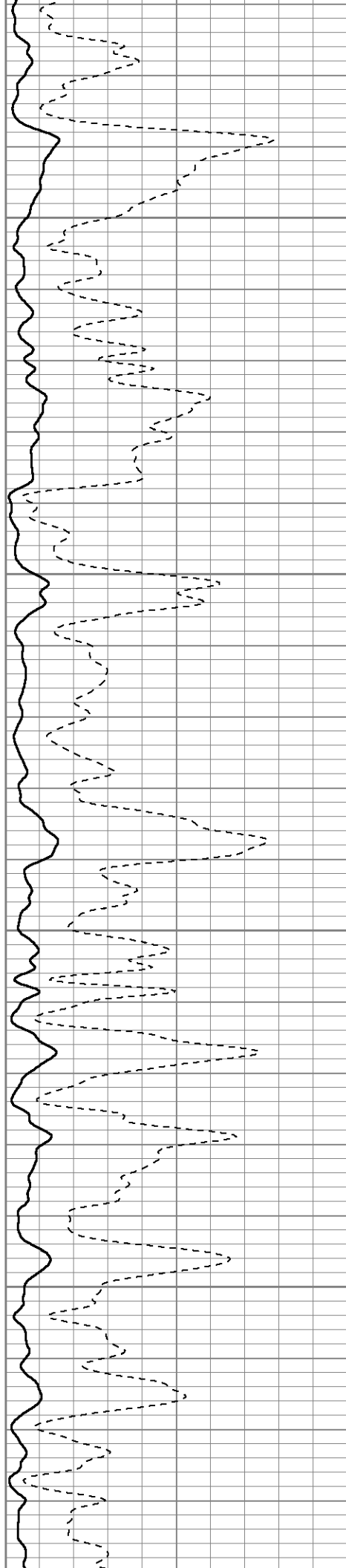


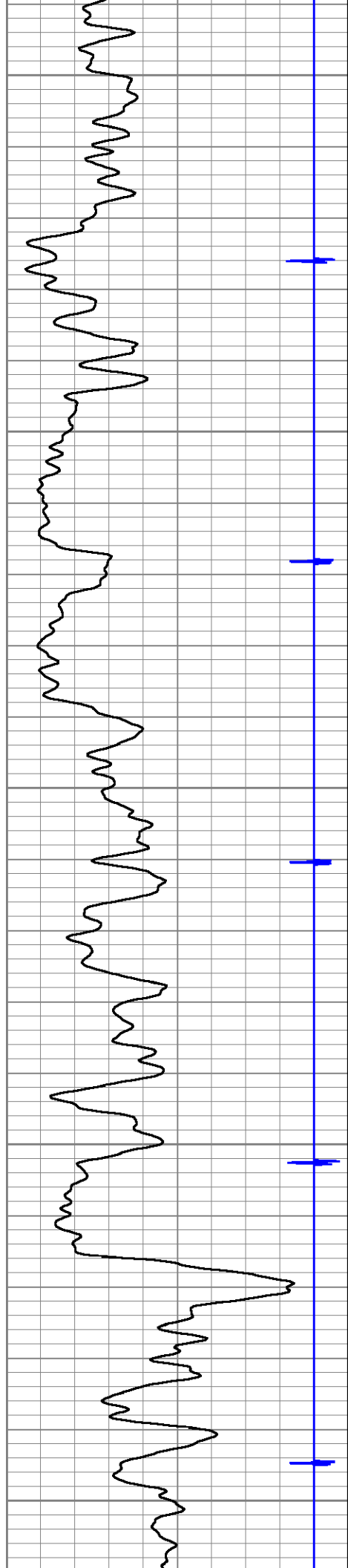
1750

1800

1850

1900





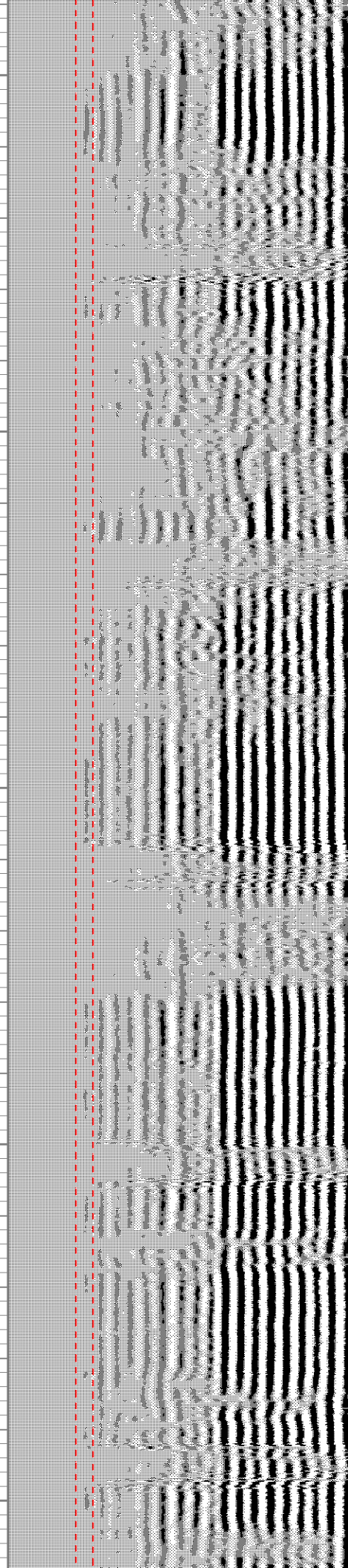
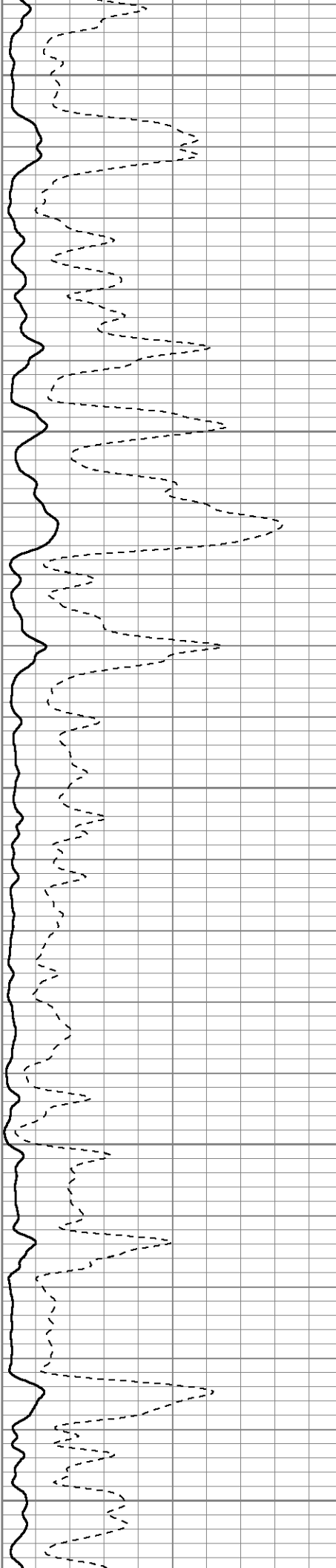
1950

2000

2050

2100

2150



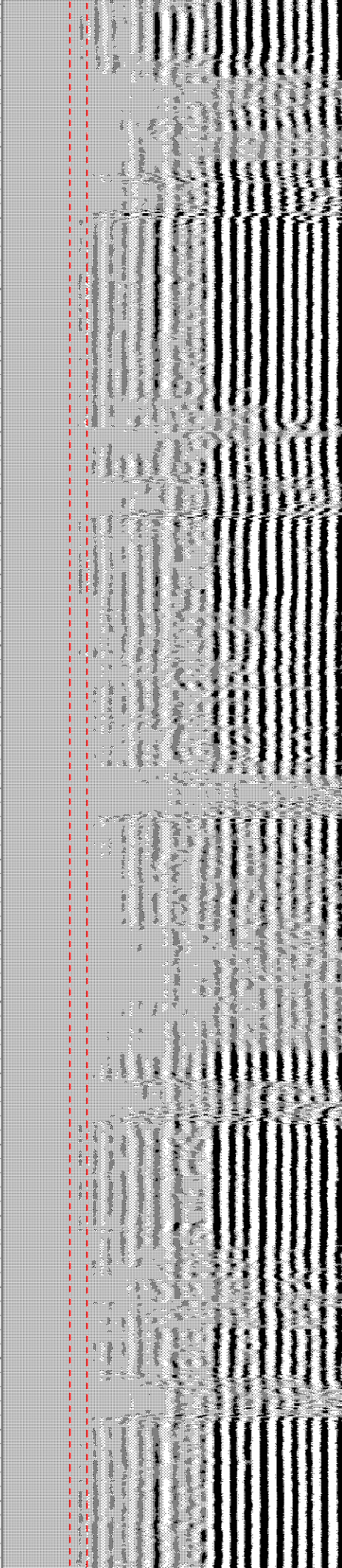
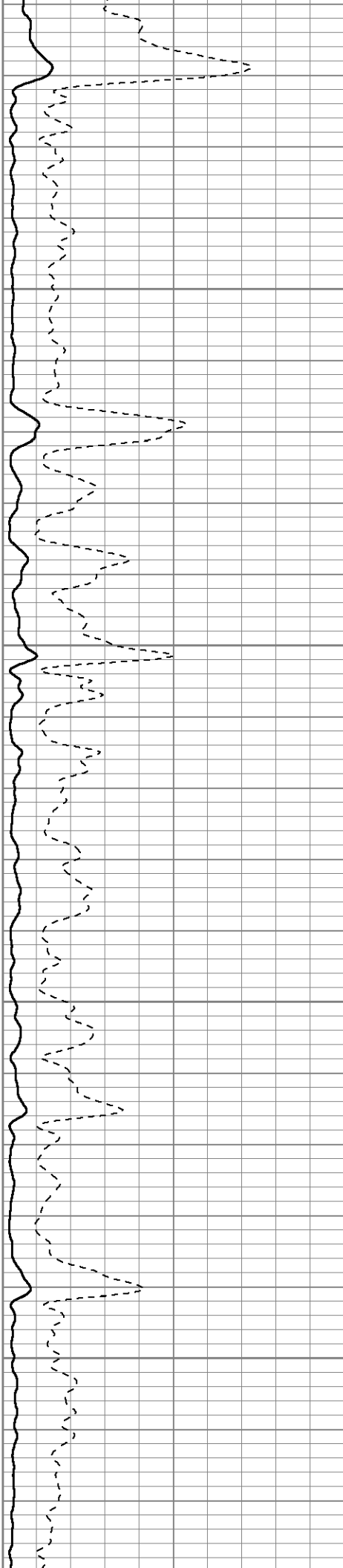


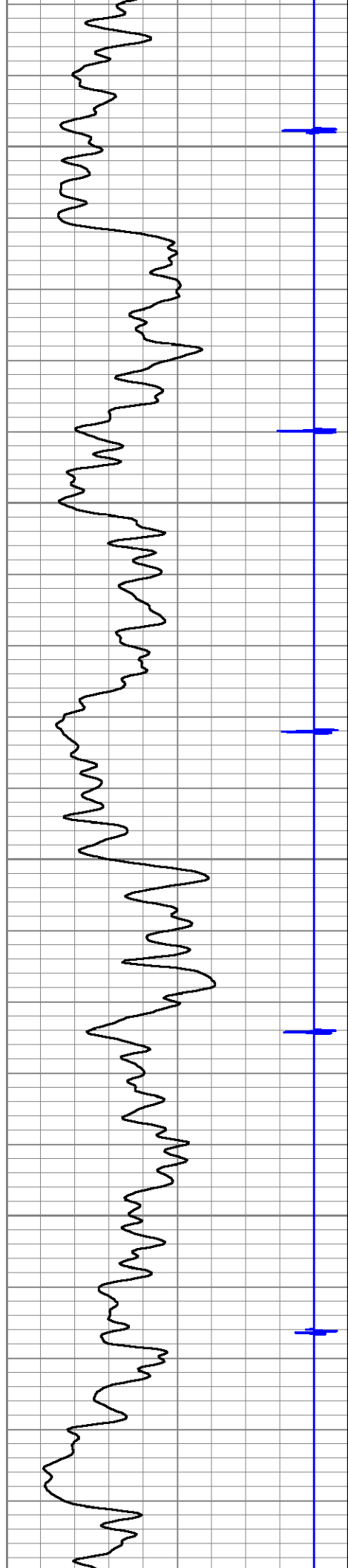
2200

2250

2300

2350





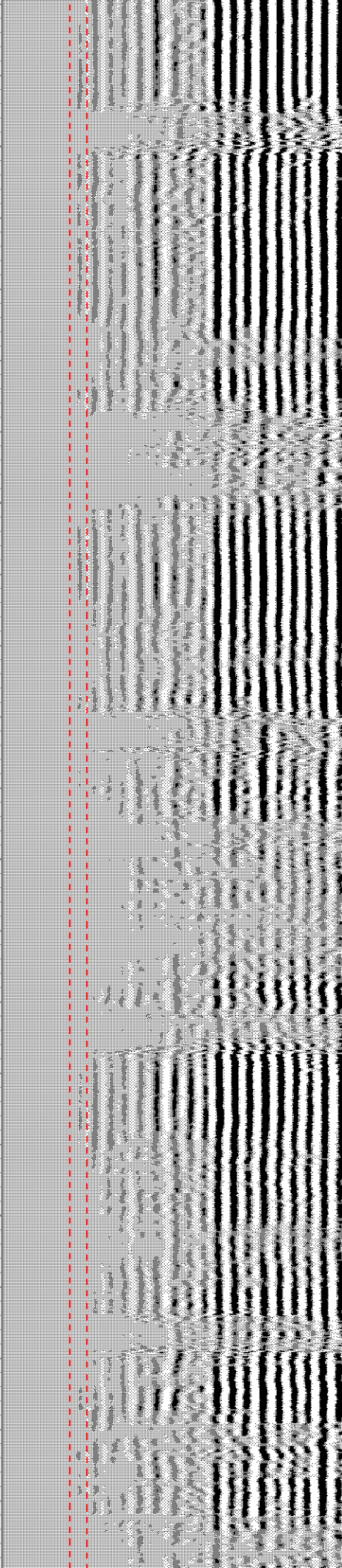
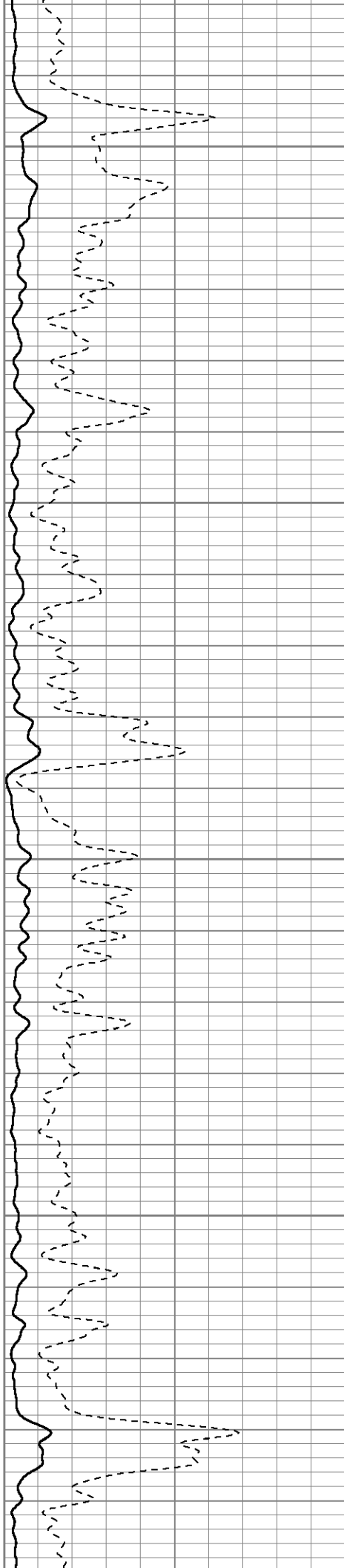
2400

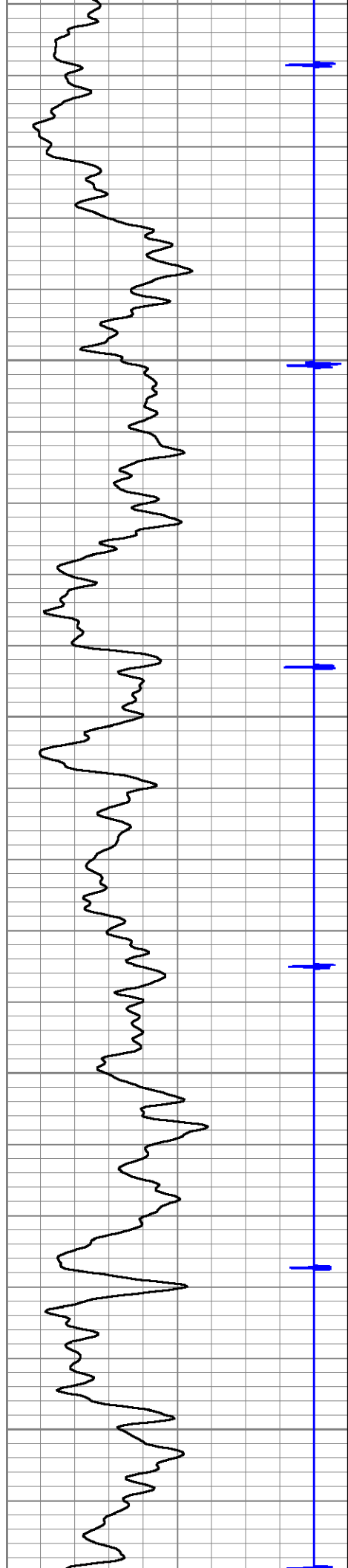
2450

2500

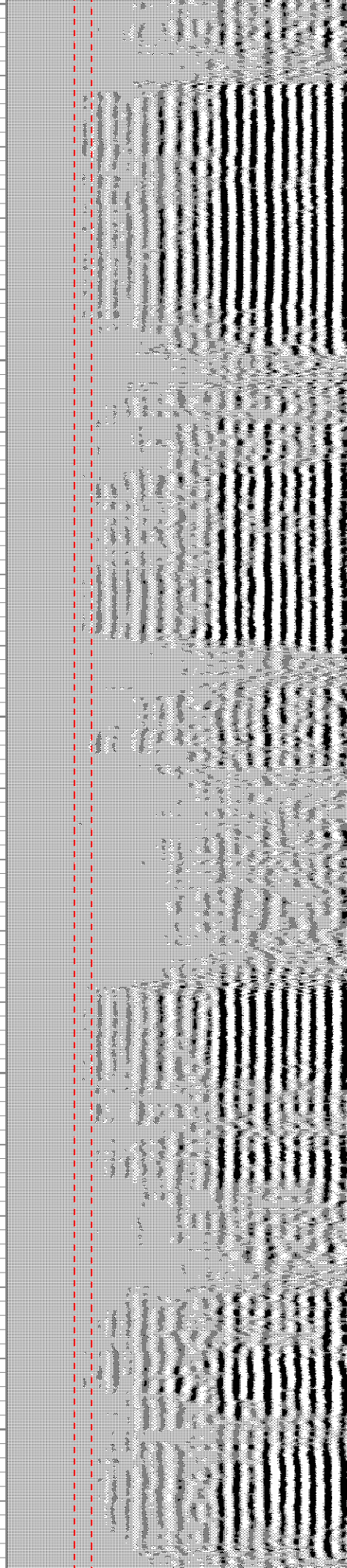
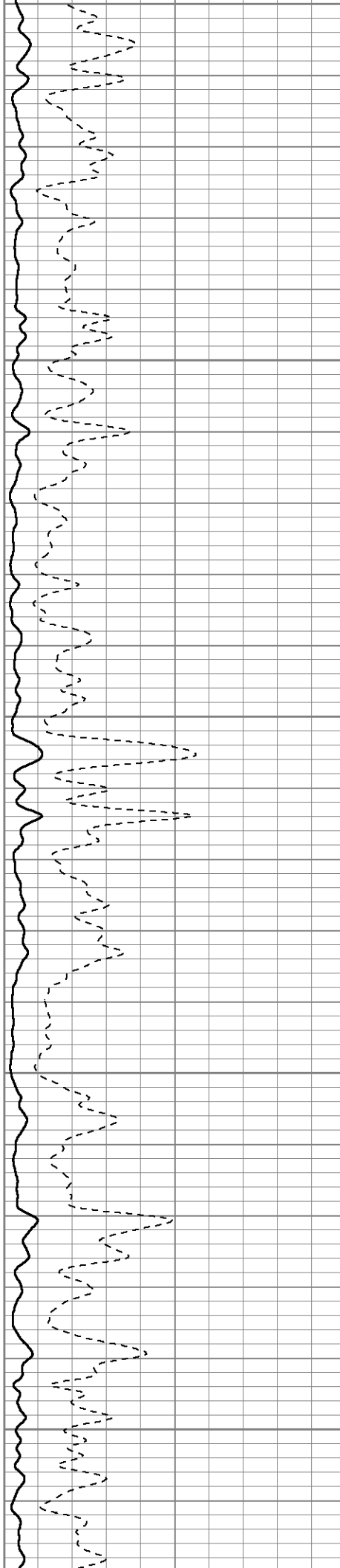
2550

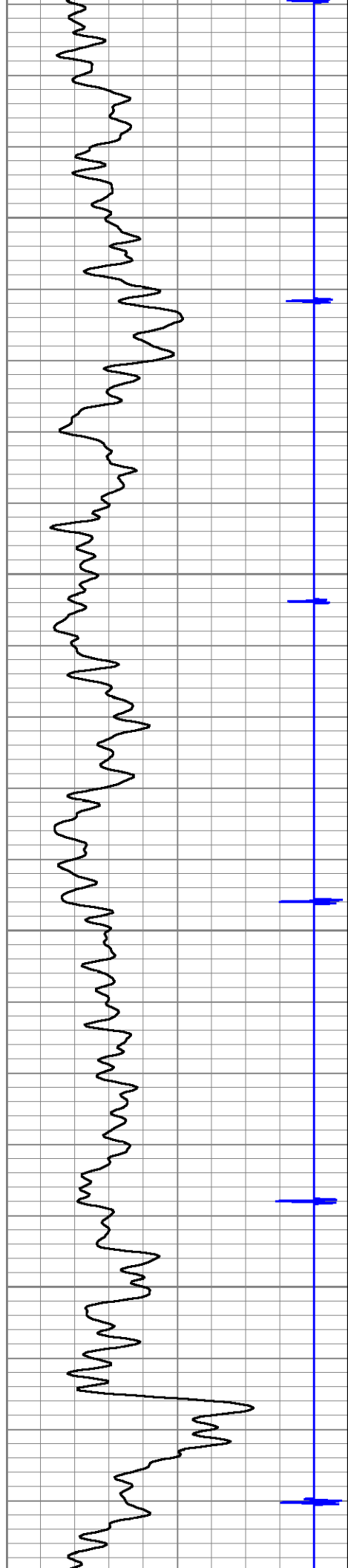
2600





2600
2650
2700
2750
2800



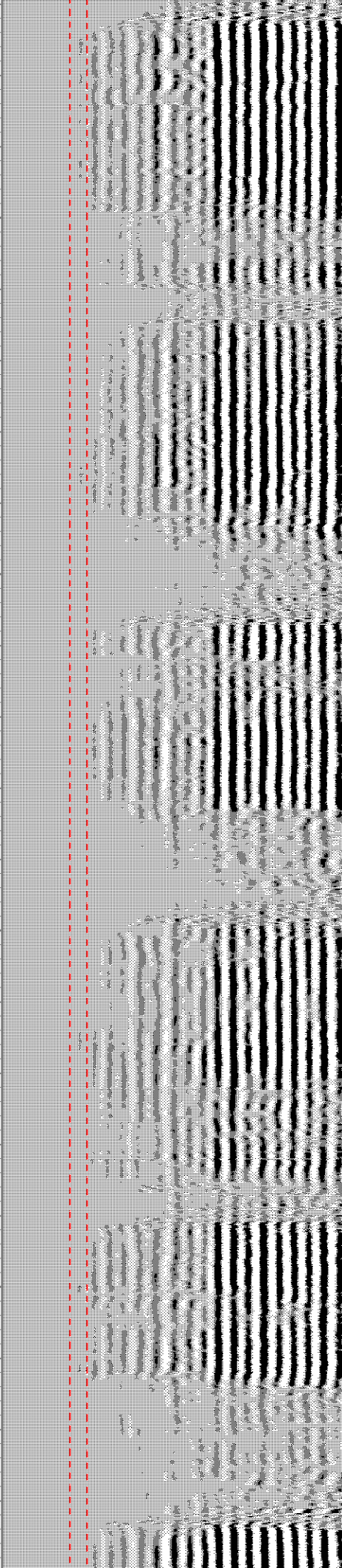
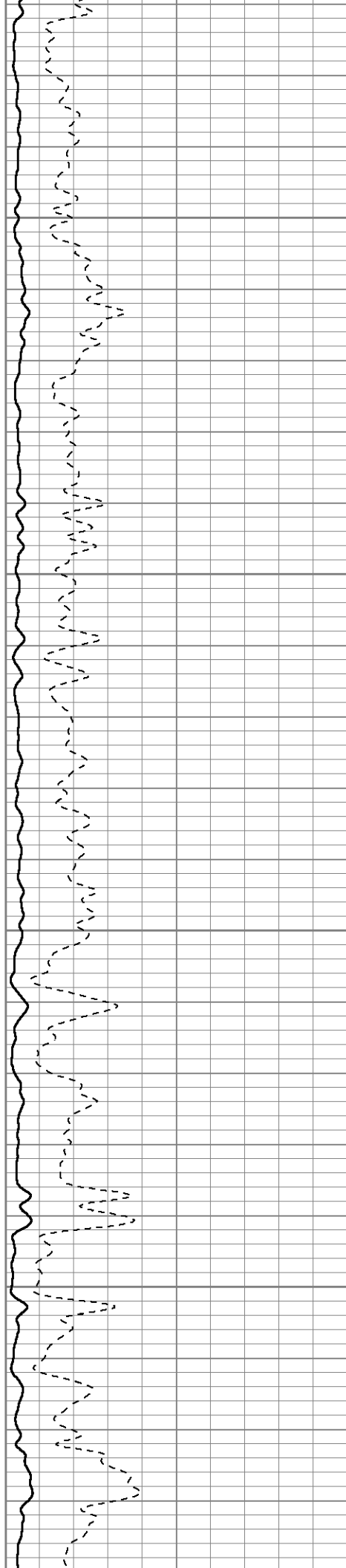


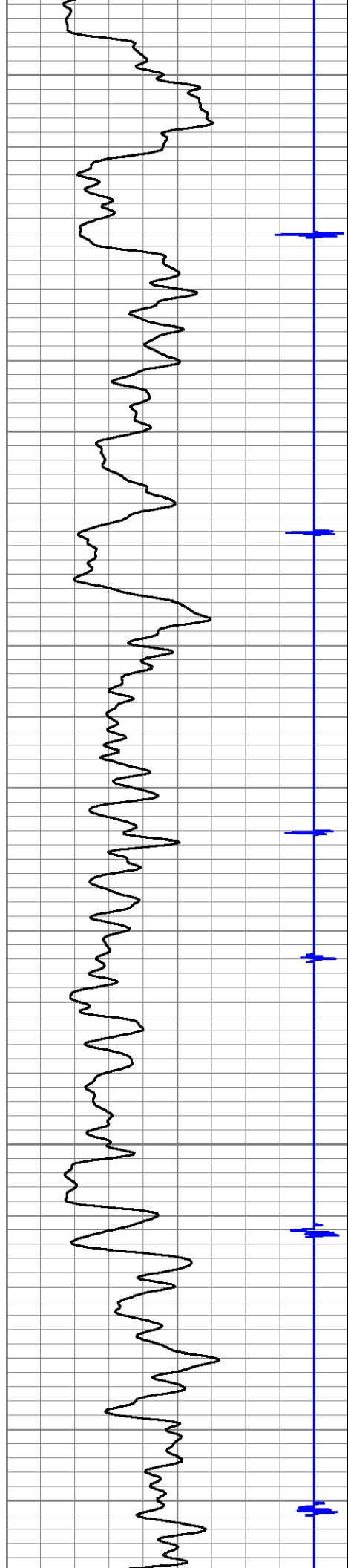
2850

2900

2950

3000





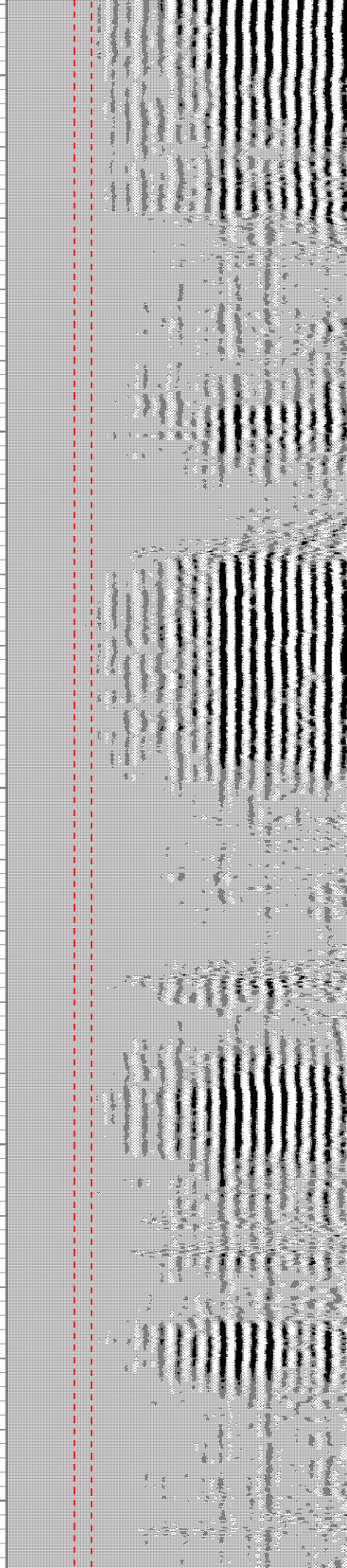
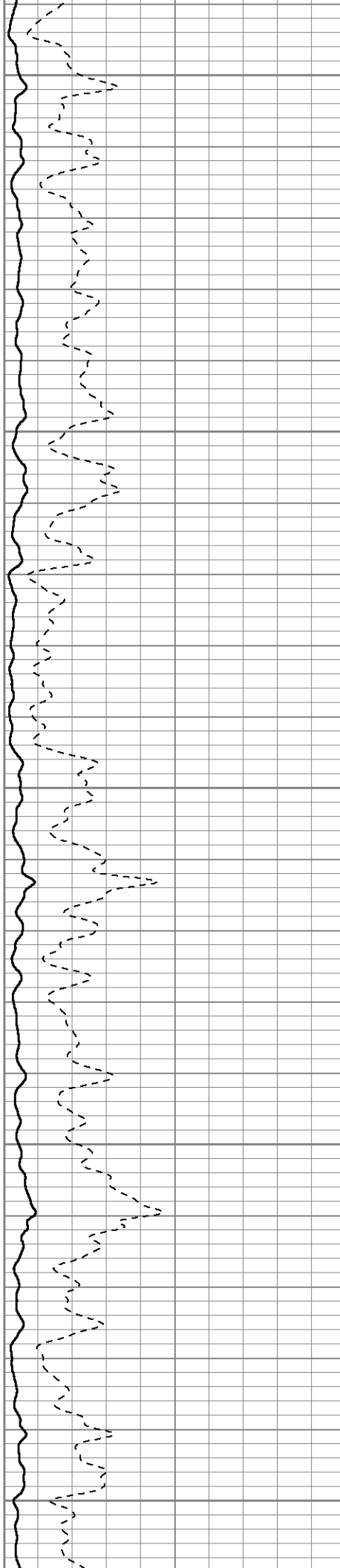
3050

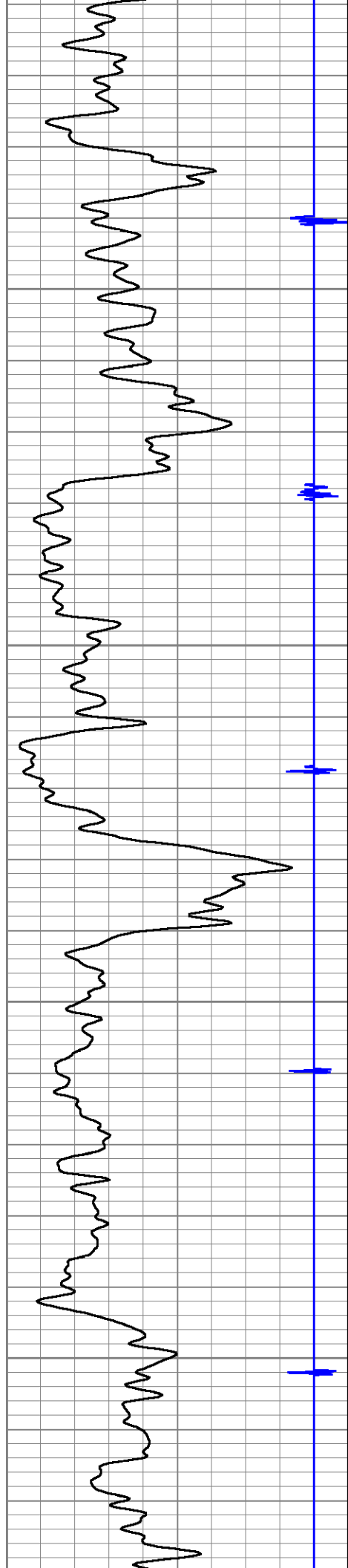
3100

3150

3200

3250



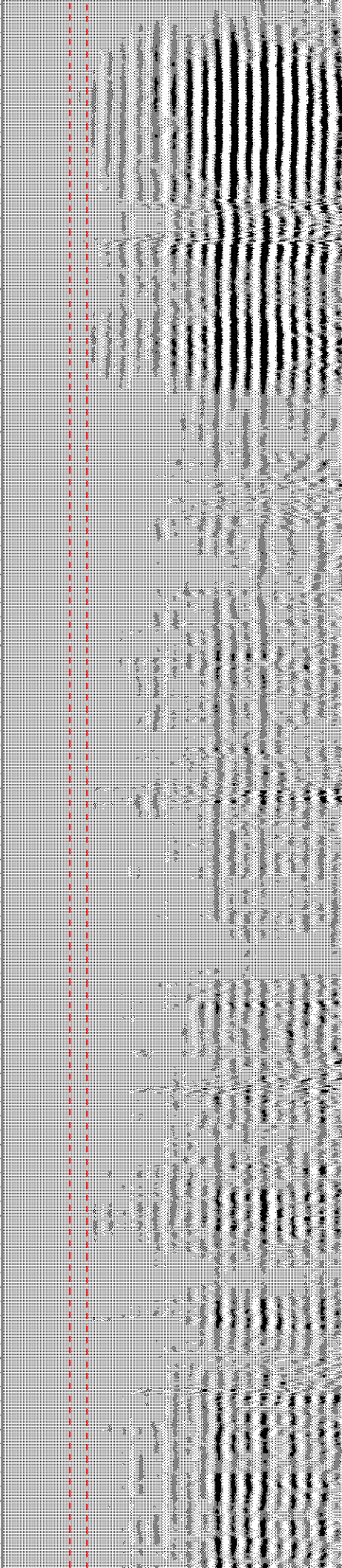
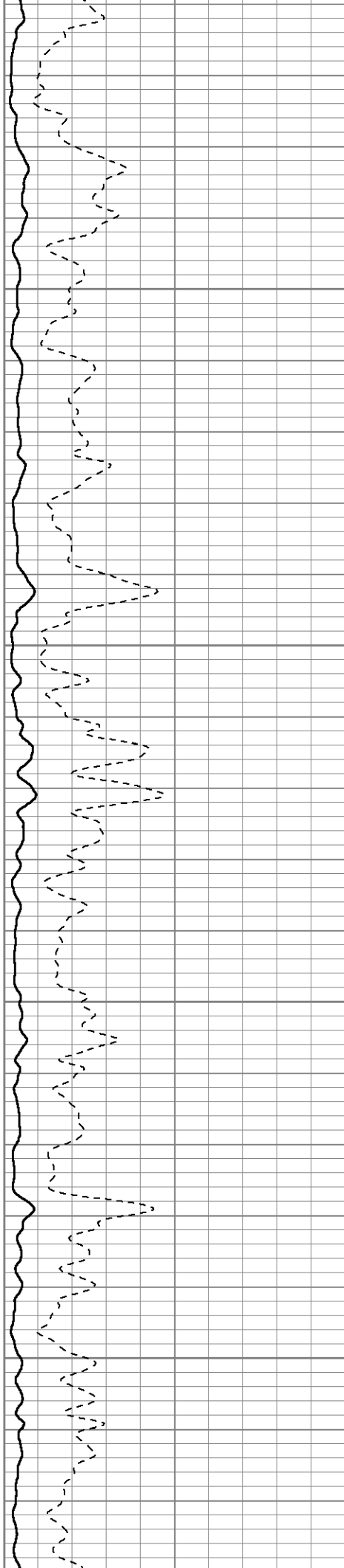


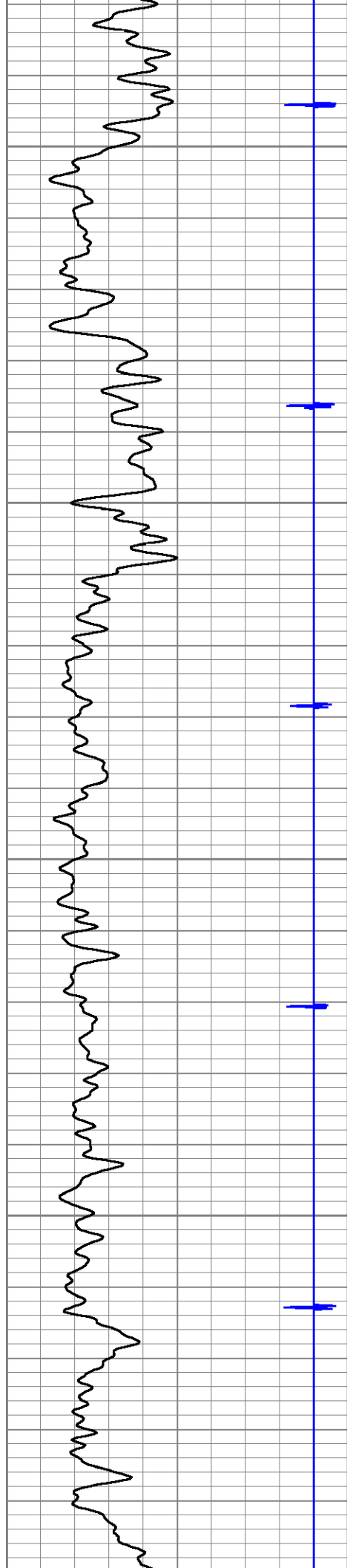
3300

3350

3400

3450





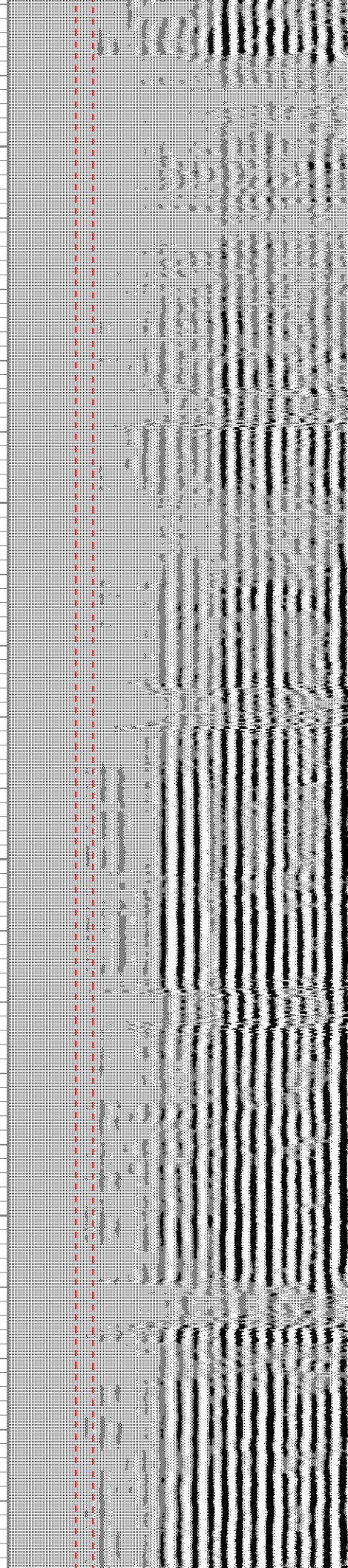
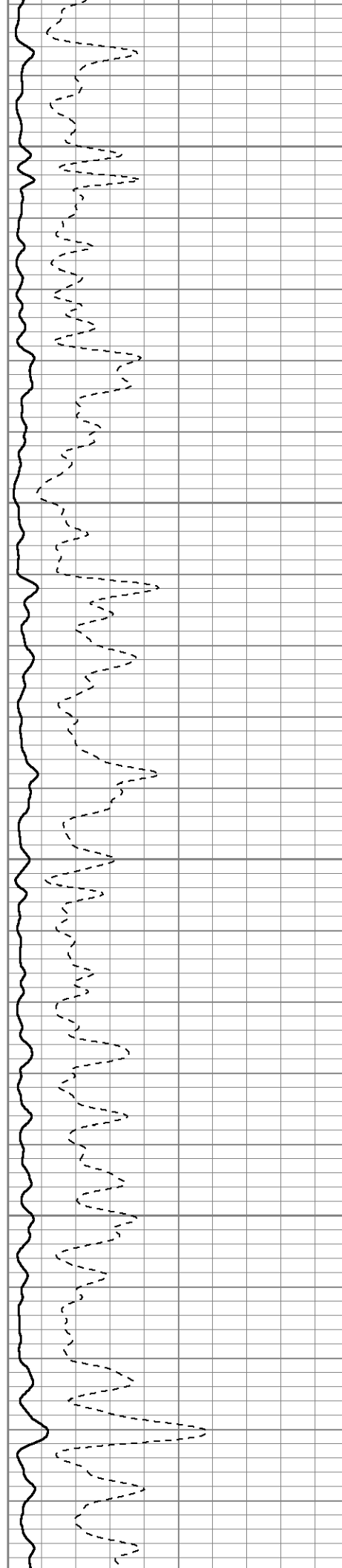
3500

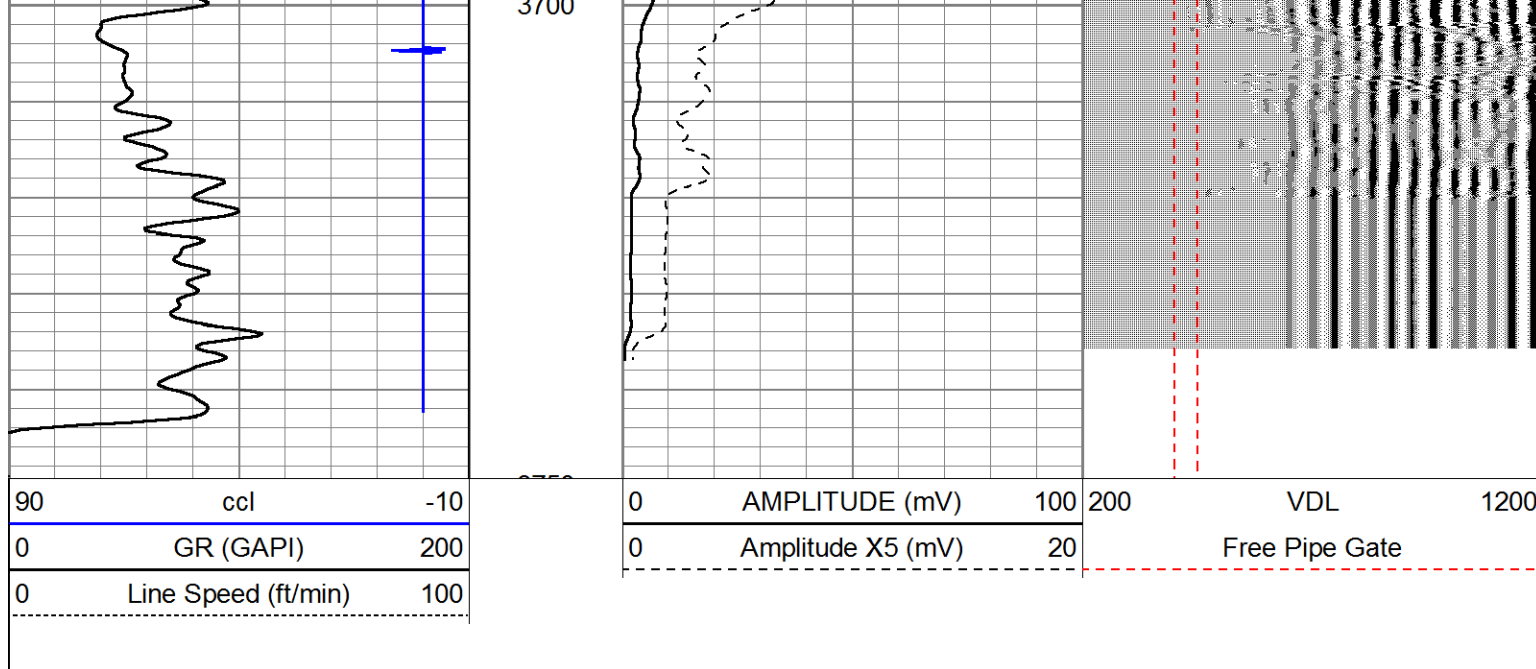
3550

3600

3650

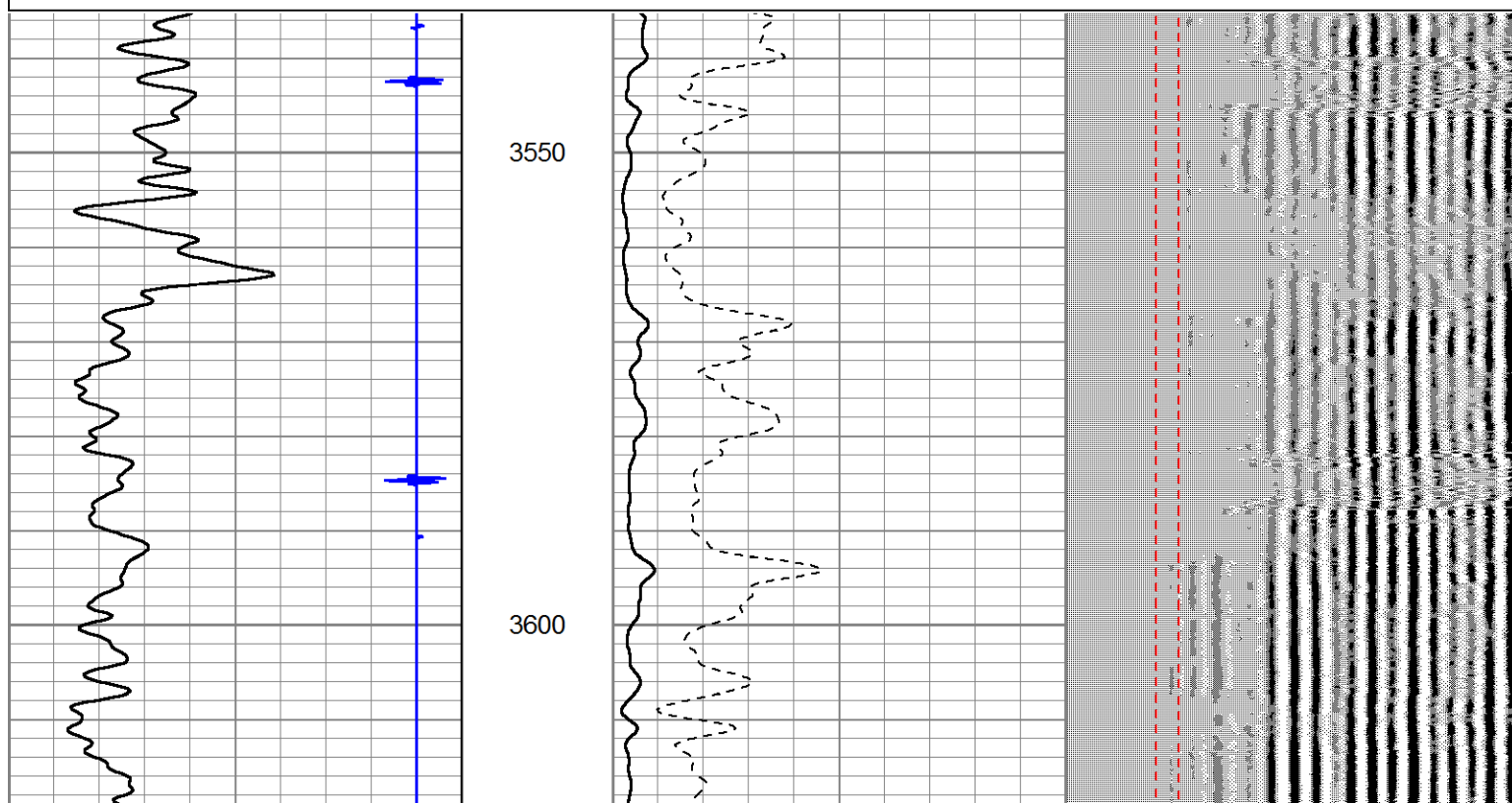
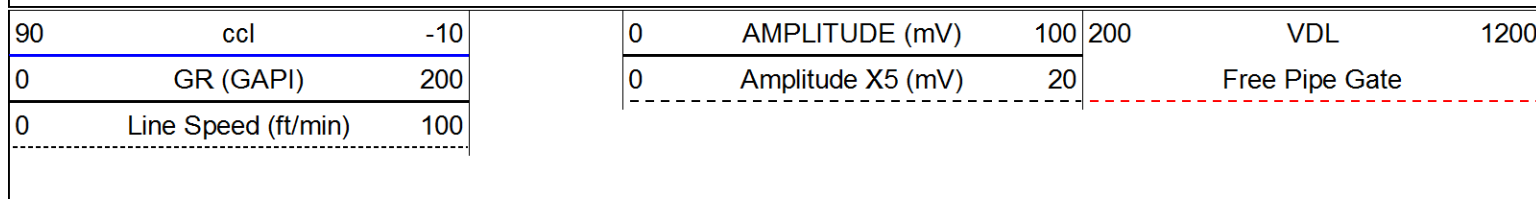
3700

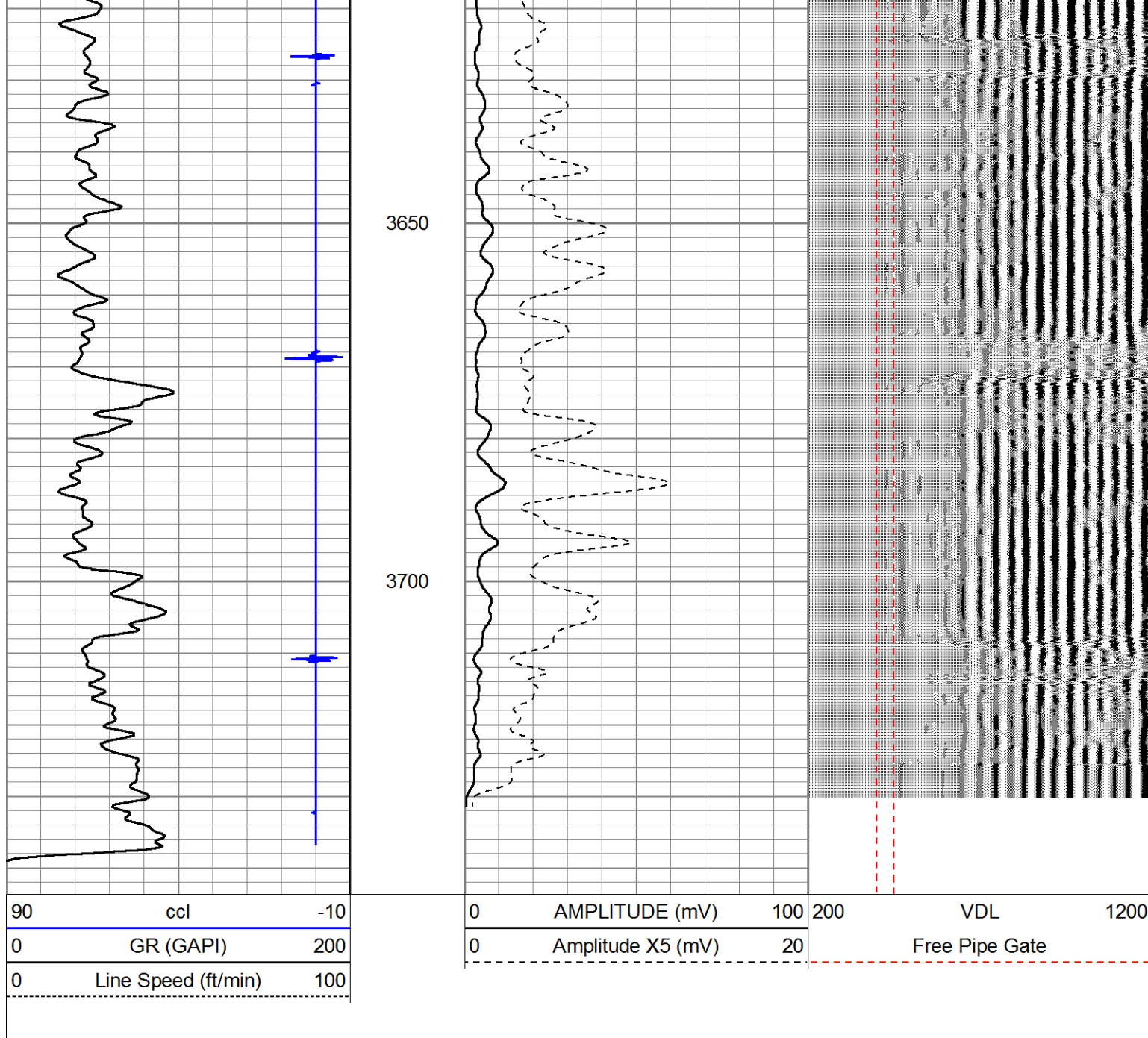




Repeat Pass 5"=100'

Database File: coleman_la_plata_34_7_34_1.db
 Dataset Pathname: pass2
 Presentation Format: cblwill
 Dataset Creation: Sat Jun 20 09:09:29 2015 by Log 7.0 B1
 Charted by: Depth in Feet scaled 1:240





Calibration Report

Database File: coleman_la_plata_34_7_34_1.db
 Dataset Pathname: pass3.1
 Dataset Creation: Sat Jun 20 10:05:24 2015 by Calc 7.0 B1

Gamma Ray Calibration Report

Serial Number: PRO120673
 Tool Model: Probe275dig
 Performed: Sat Jun 20 08:44:10 2015

Calibrator Value: 185.2 GAPI

Background Reading: 4.8 cps
 Calibrator Reading: 200.0 cps

Sensitivity: 0.7000 GAPI/cps

Segmented Cement Bond Log Calibration Report

Serial Number: Probe131119

Tool Model:

Probe

Calibration Casing Diameter:

7.000

in

Calibration Depth:

37.808

ft

Master Calibration, performed Sat Jun 20 08:52:08 2015:

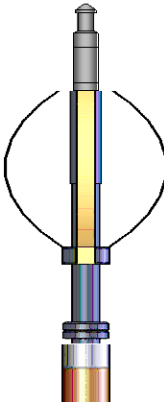
	Raw (v)		Calibrated (mv)		Results	
	Zero	Cal	Zero	Cal	Gain	Offset
3'	0.017	0.682	2.000	62.165	90.450	0.474
CAL	0.017	0.891				
5'	0.017	0.742	2.000	62.165	83.037	0.592
SUM						
S1	0.016	0.635	0.000	100.000	161.607	-2.612
S2	0.016	0.643	0.000	100.000	159.471	-2.573
S3	0.016	0.655	0.000	100.000	156.458	-2.544
S4	0.016	0.689	0.000	100.000	148.605	-2.422
S5	0.016	0.709	0.000	100.000	144.439	-2.382
S6	0.017	0.706	0.000	100.000	144.994	-2.402
S7	0.017	0.680	0.000	100.000	150.779	-2.499
S8	0.017	0.649	0.000	100.000	158.272	-2.651

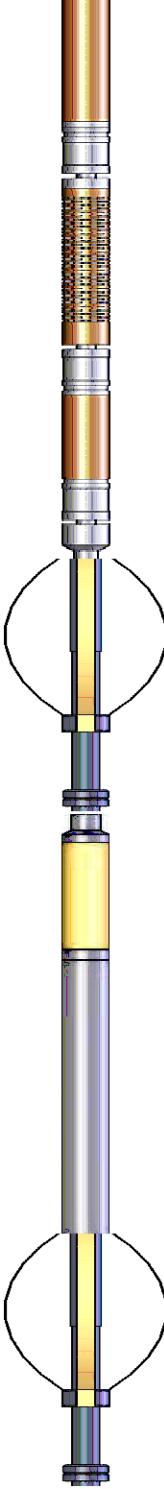
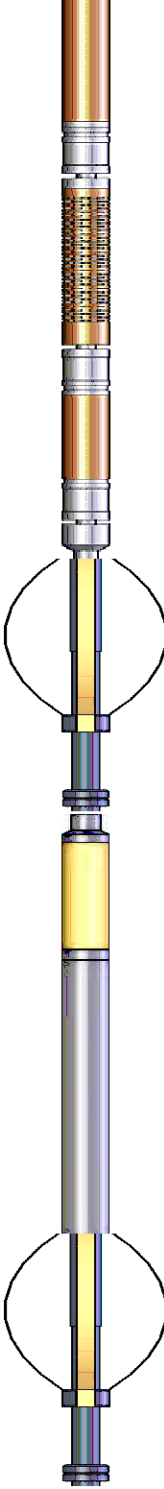
Internal Reference Calibration, performed Wed Dec 31 18:00:00 1969:


	Raw (v)		Calibrated (v)		Results	
	Zero	Cal	Zero	Cal	Gain	Offset
CAL	0.000	0.000	0.017	0.891	1.000	0.000

Air Zero Calibration, performed Sat Jun 20 08:50:31 2015:

	Raw (v)		Calibrated (v)		Results	
	Zero		Zero		Offset	
3'	0.000		0.000		0.000	
5'	0.000		0.000		0.000	
SUM						
S1	0.000		0.000		0.000	
S2	0.000		0.000		0.000	
S3	0.000		0.000		0.000	
S4	0.000		0.000		0.000	
S5	0.000		0.000		0.000	
S6	0.000		0.000		0.000	
S7	0.000		0.000		0.000	
S8	0.000		0.000		0.000	

Sensor	Offset (ft)	Schematic	Description	Len (ft)	OD (in)	Wt (lb)
			1.4375CHD Titan Cable Head 1 7/16	1.00	1.44	10.00
			Probe Probe 2 3/4 Centralizer	2.88	2.75	20.00

WVF3FT	14.72		RBT-Probe (Probe131119) Probe 2.75" Radii Bond Tool	7.00	2.75	90.00
WVFCAL	14.72					
WVFS1	14.72					
WVFS2	14.72					
WVFS3	14.72					
WVFS4	14.72					
WVFS5	14.72					
WVFS6	14.72					
WVFS7	14.72					
WVFS8	14.72					
WVF5FT	13.72					
			Probe Probe 2 3/4 Centralizer	2.88	2.75	20.00
CCL	6.75		GR-Probe275dig (PRO120673) Probe Digital Gamma CCL	4.78	2.75	57.00
DCCL	6.75					
GR	5.42					
			Probe Probe 2 3/4 Centralizer	2.88	2.75	20.00
Dataset: coleman_la_plata_34_7_34_1.db: field/well/run1/pass3.1 Total Length: 21.41 ft Total Weight: 217.00 lb O.D. 2.75 in						

Company	Coleman Oil & Gas, Inc.				
Well	La Plata 34-7-34 #1				
Field	Blanco Ignacio				
County	La Plata	State	Colorado		
	Cement Bond				
	Gamma Ray / CCL				
	Log				