



Cement Bond
Gamma Ray / CCL
Log

Company Coleman Oil & Gas, Inc.
Well La Plata 34-7-33 #1
Field Blanco Ignacio
County La Plata State Colorado

Location: API #: 05-067-09916
Section: 33, Township: 34N, Range 7W
SHL: 232' FSL & 749' FEL
SEC TWP RGE
Permanent Datum Ground Level Elevation 6726'
Log Measured From K.B. 16 APD
Drilling Measured From K.B.
Other Services
Elevation
K.B. 6742'
D.F. 6742'
G.L. 6726'

Company Coleman Oil & Gas, Inc.
Well La Plata 34-7-33 #1
Field Blanco Ignacio
County La Plata
State Colorado

Date 06-20-2015

Run Number	1
Depth Driller	3334'
Depth Logger	3176'
Bottom Logged Interval	3176'
Top Log Interval	Surface
Open Hole Size	8.75"
Type Fluid	Water
Density / Viscosity	8.3
Max. Recorded Temp.	-
Estimated Cement Top	-
Time Well Ready	ROA
Time Logger on Bottom	See Log
Equipment Number	LW-115
Location	Farmington, NM
Recorded By	W. Richardson
Witnessed By	J. Maize

Borehole Record				Tubing Record			
Run Number	Bit	From	To	Size	Weight	From	To
Casing Record		Size		Mgt/ft		Top	Bottom
Surface String		9 5/8"		36# J-55		Surface	525'
Prot. String							
Production String		7"		26#		Surface	3334'
Liner							
Marker Joint		2648'-2665'					

<<< Fold Here >>>

All interpretations are opinions based on inferences from electrical or other measurements and we cannot and do not guarantee the accuracy or correctness of any interpretation, and we shall not, except in the case of gross or willful negligence on our part, be liable or responsible for any loss, costs, damages, or expenses incurred or sustained by anyone resulting from any interpretation made by any of our officers, agents or employees. These interpretations are also subject to our general terms and conditions set out in our current Price Schedule.

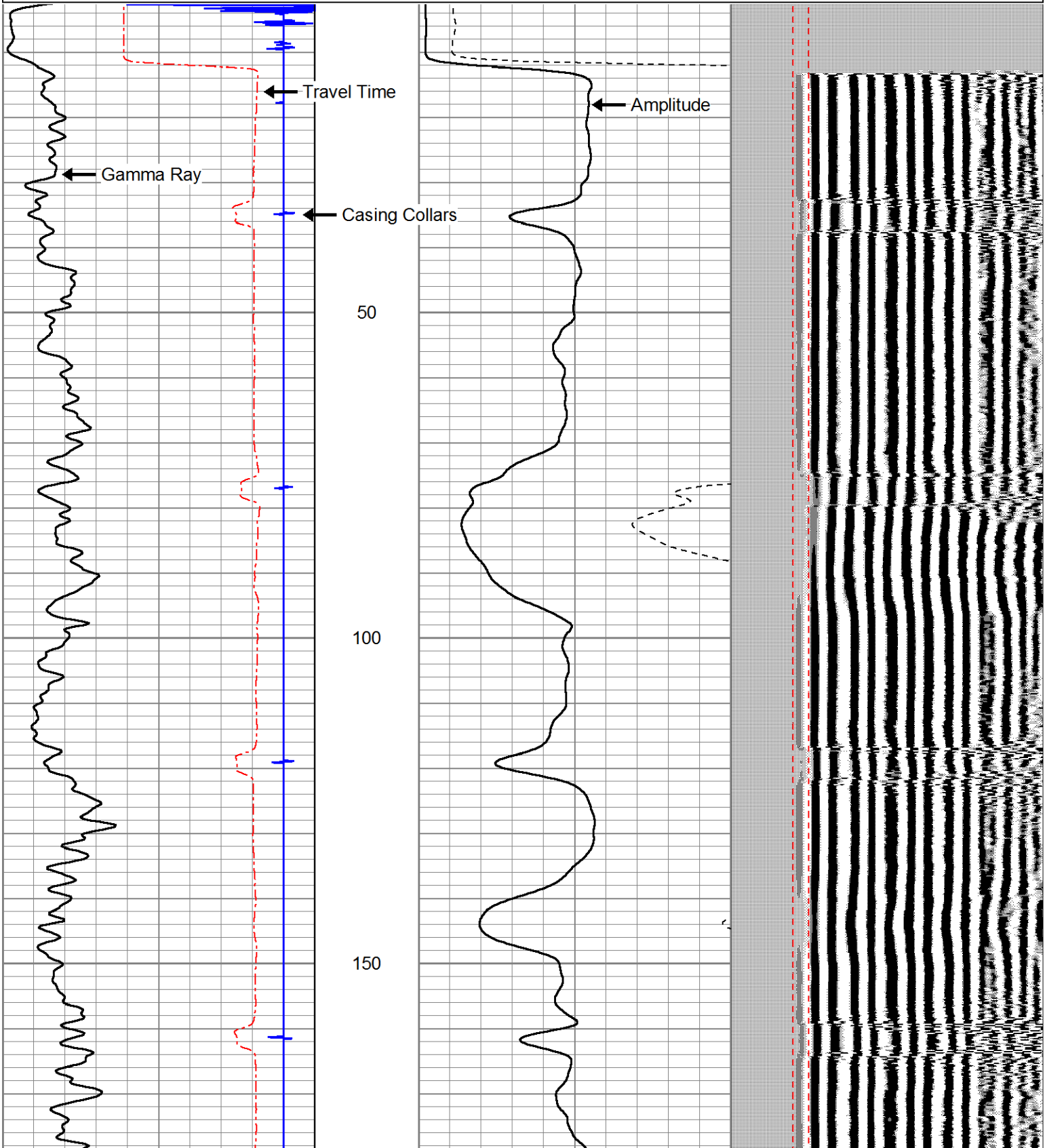
Comments

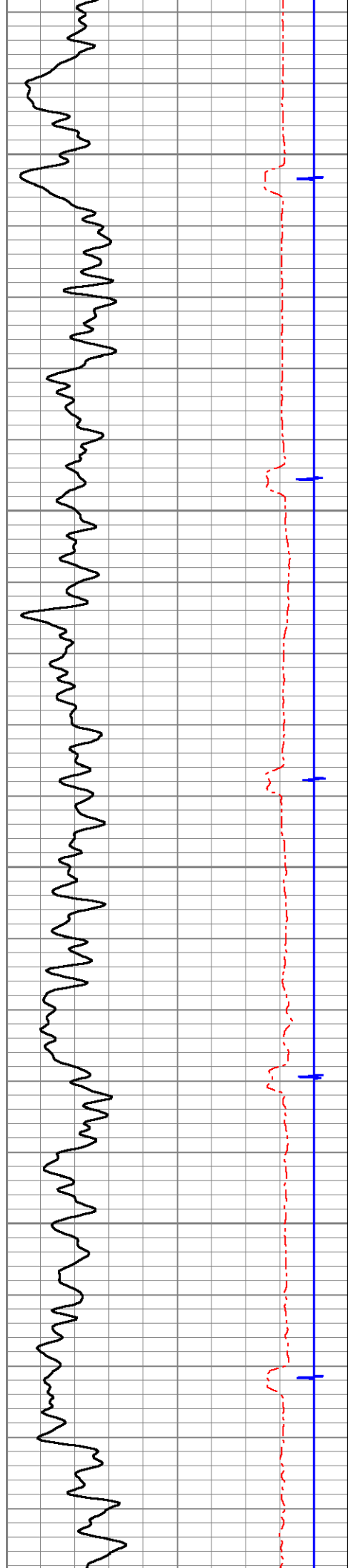
*****Thank You for Using Cutters Wireline*****



Main Pass 5"=100'

90	ccl	-10	0	AMPLITUDE (mV)	100	200	VDL	1200
0	GR (GAPI)	200	0	Amplitude X5 (mV)	20	Free Pipe Gate		
0	Line Speed (ft/min)	100						
375	Transit Time (usec)	275						



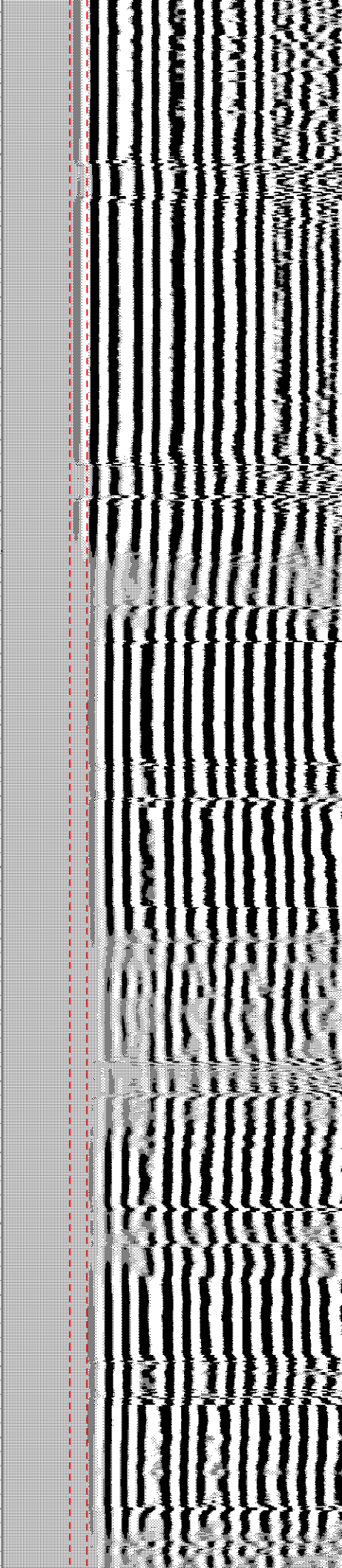
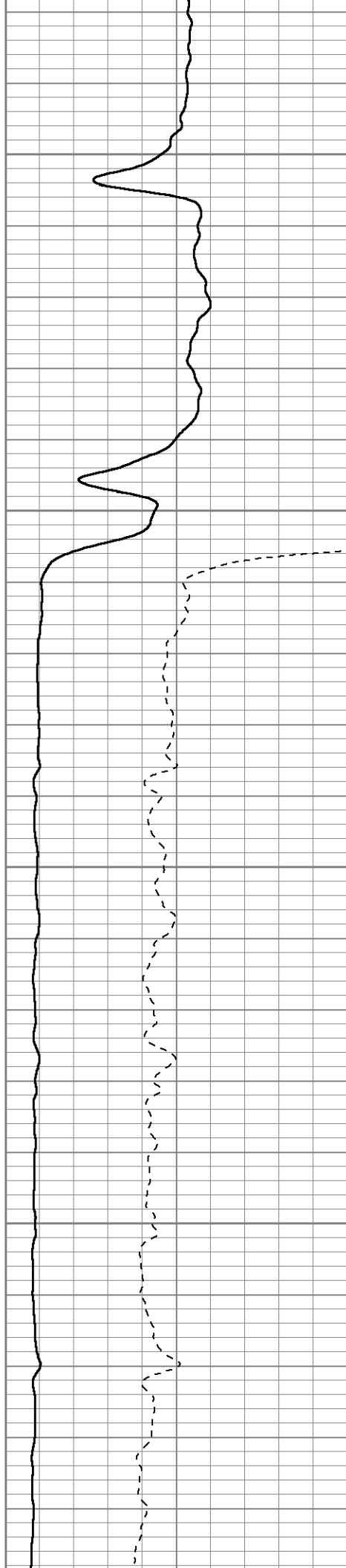


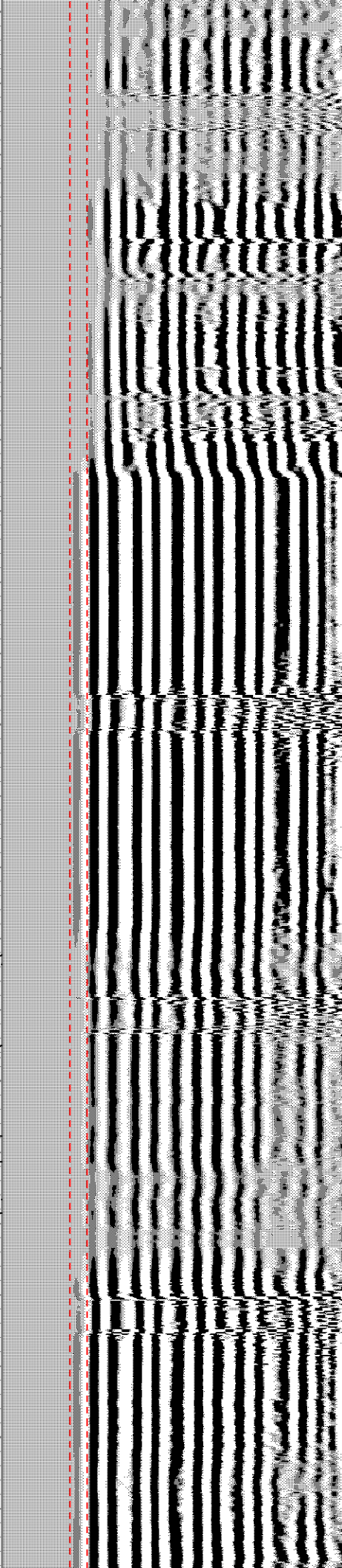
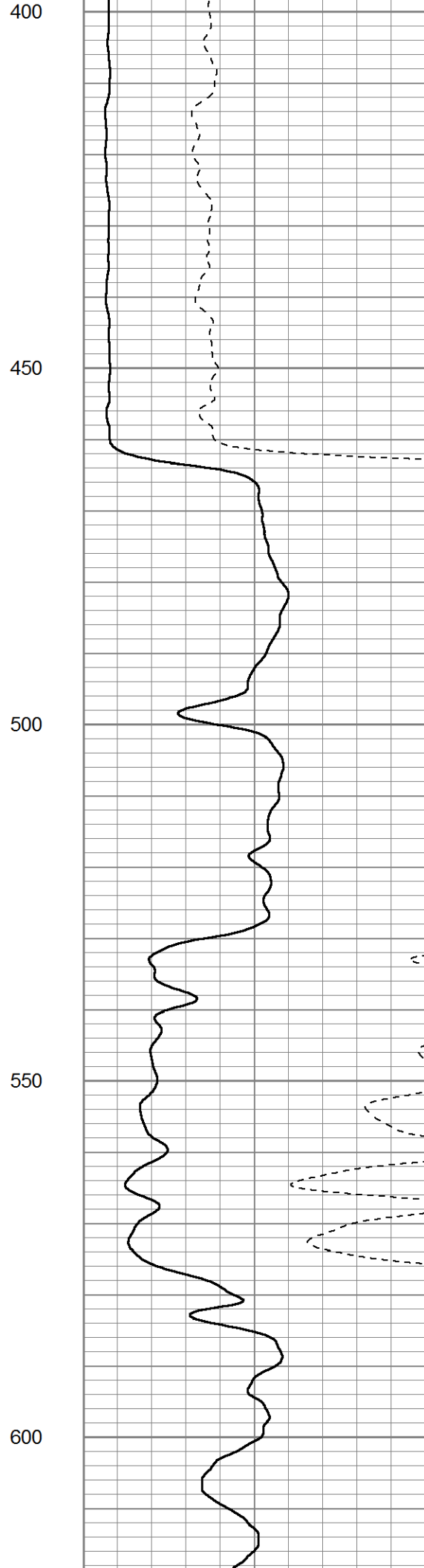
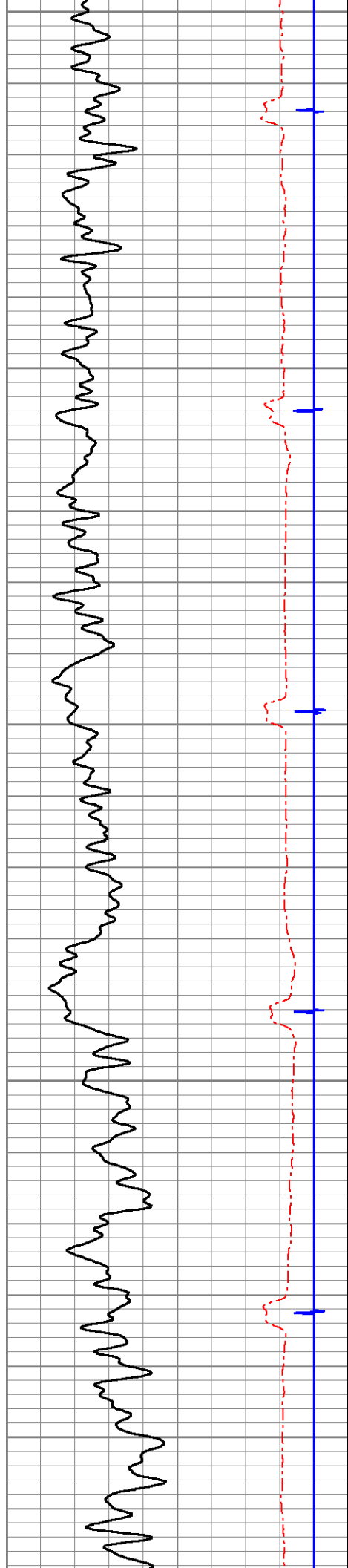
200

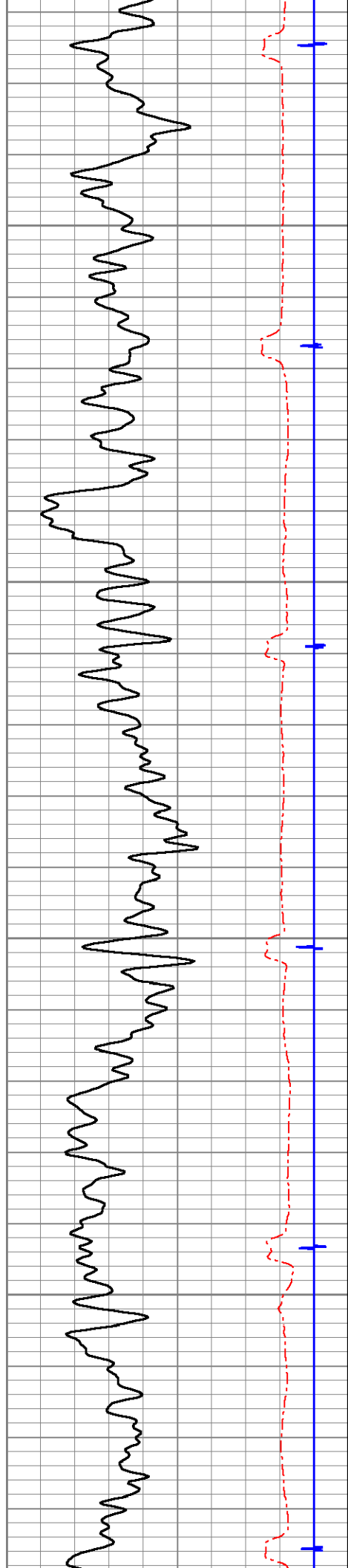
250

300

350





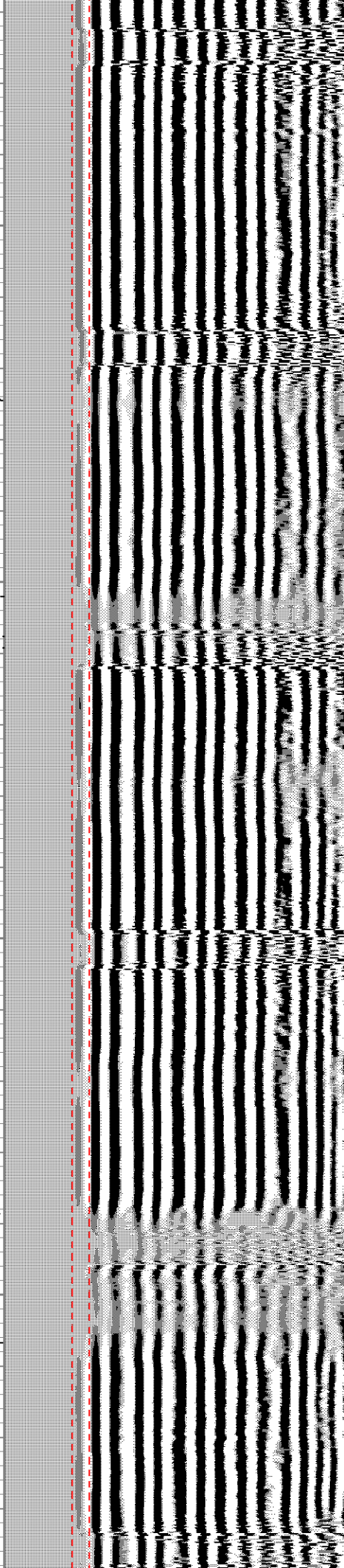
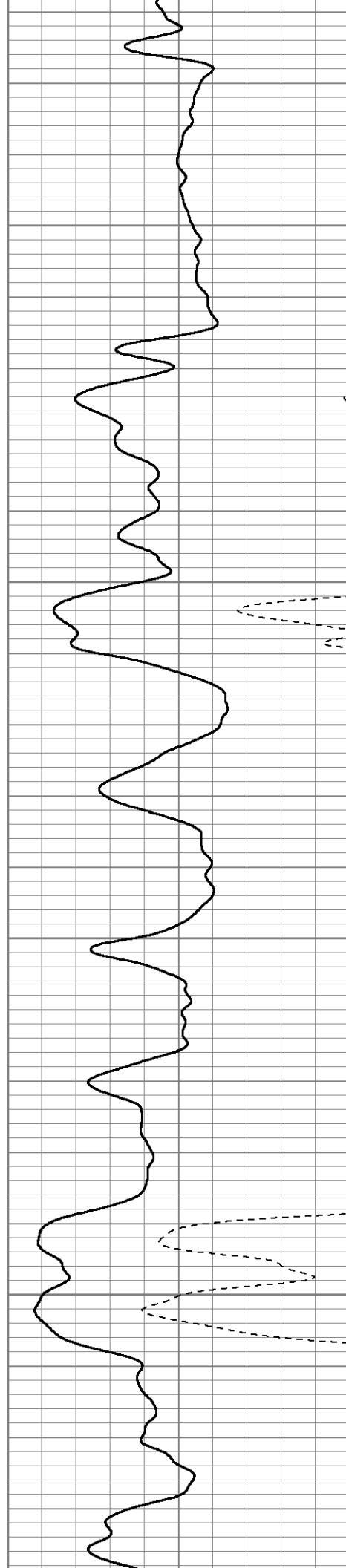


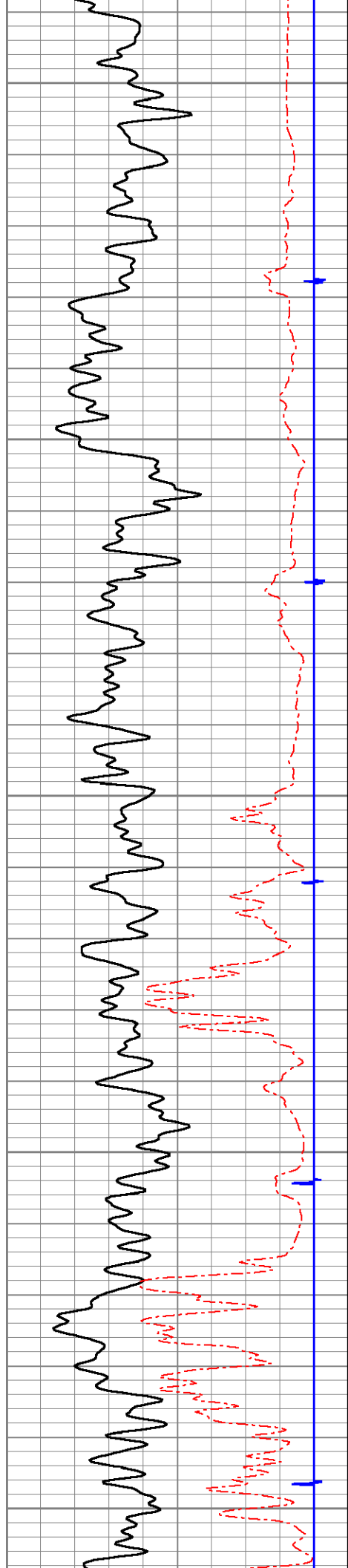
650

700

750

800





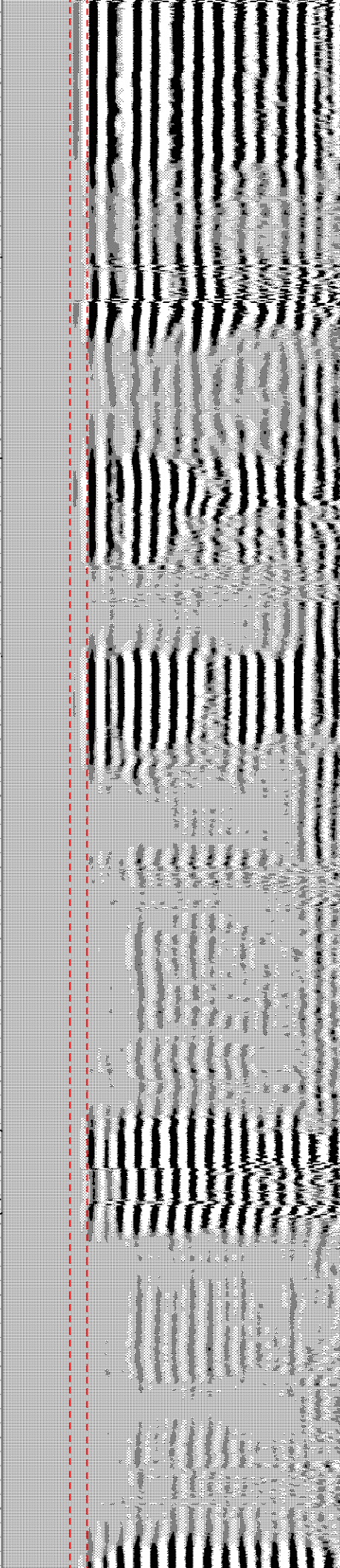
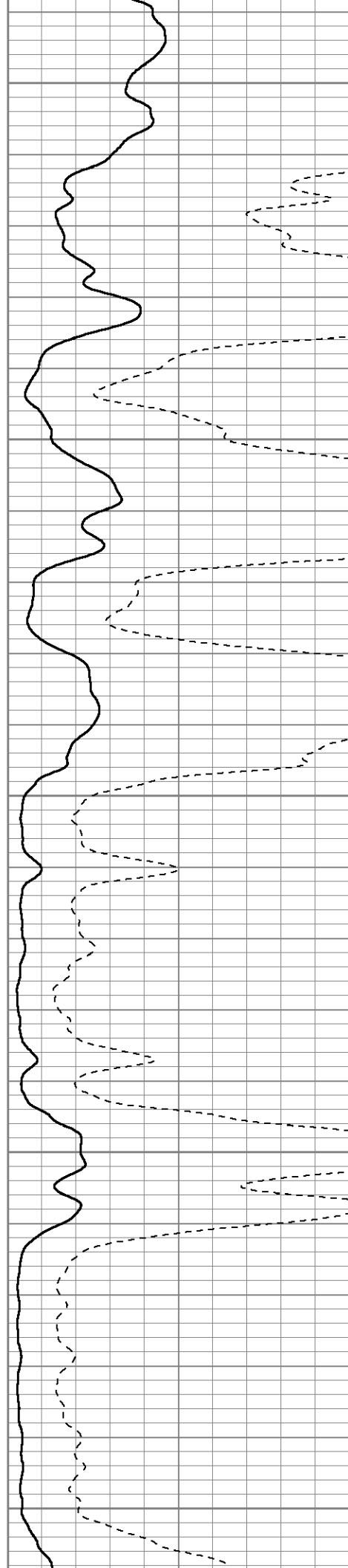
850

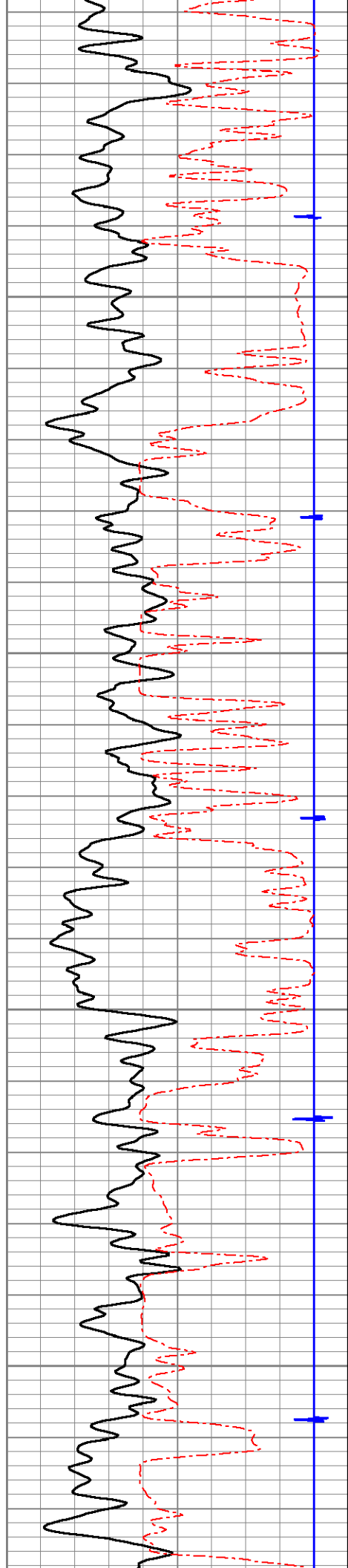
900

950

1000

1050



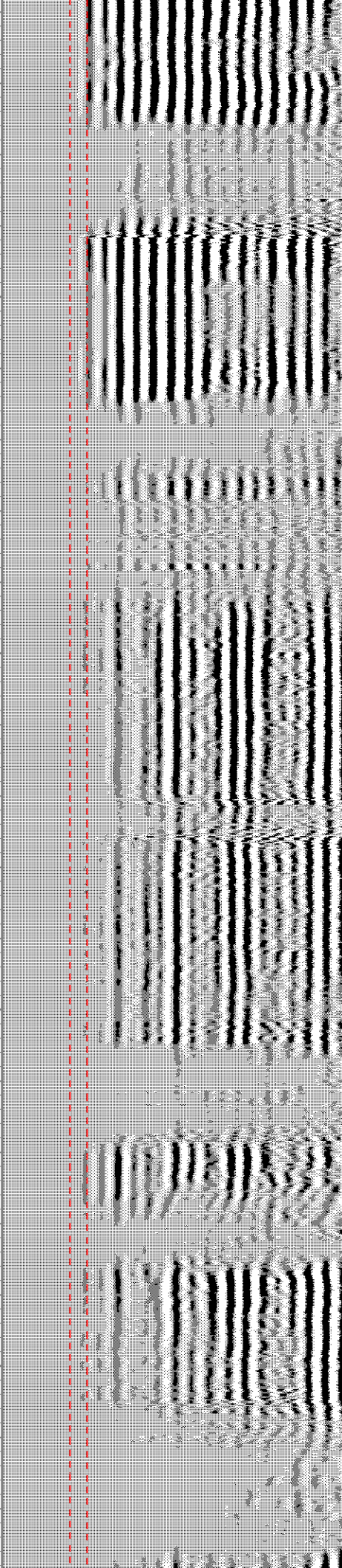
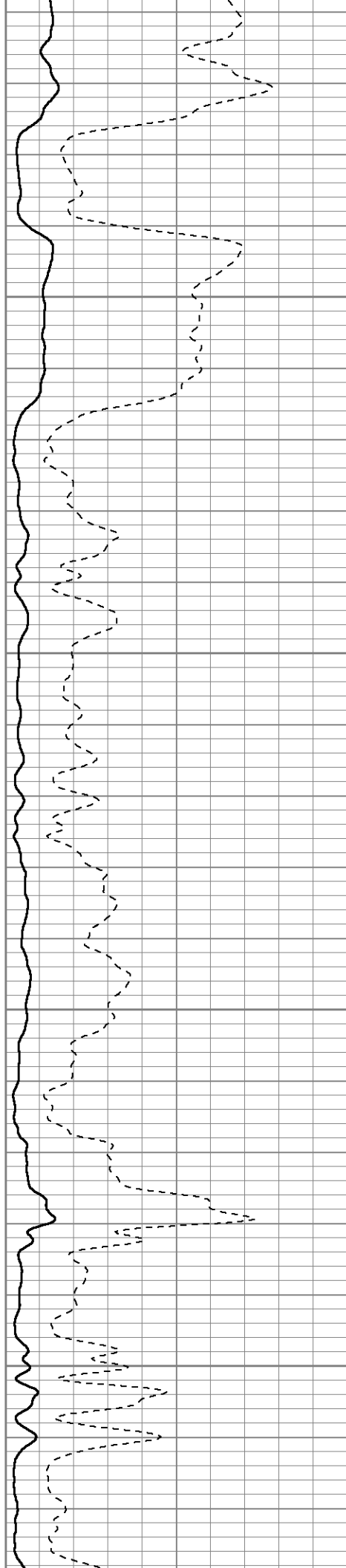


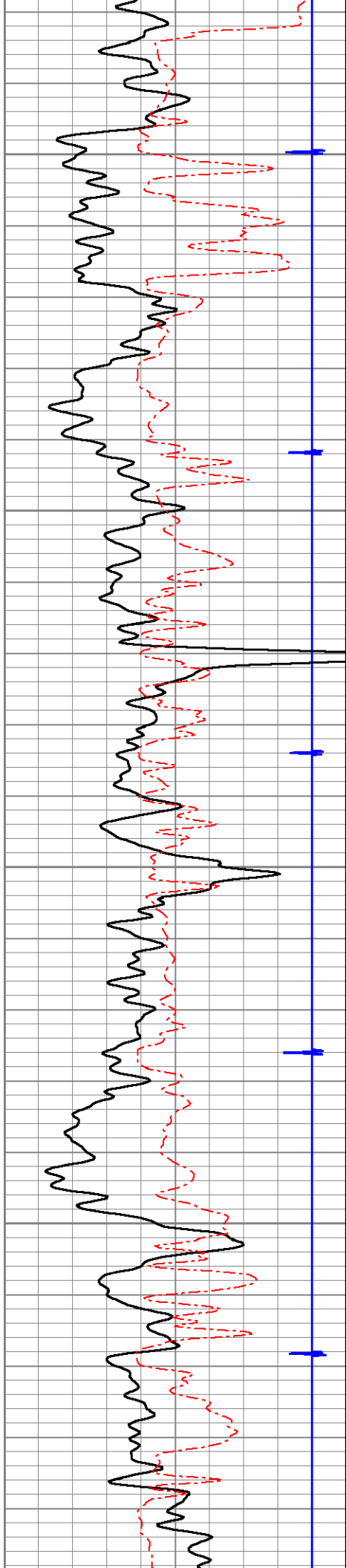
1100

1150

1200

1250



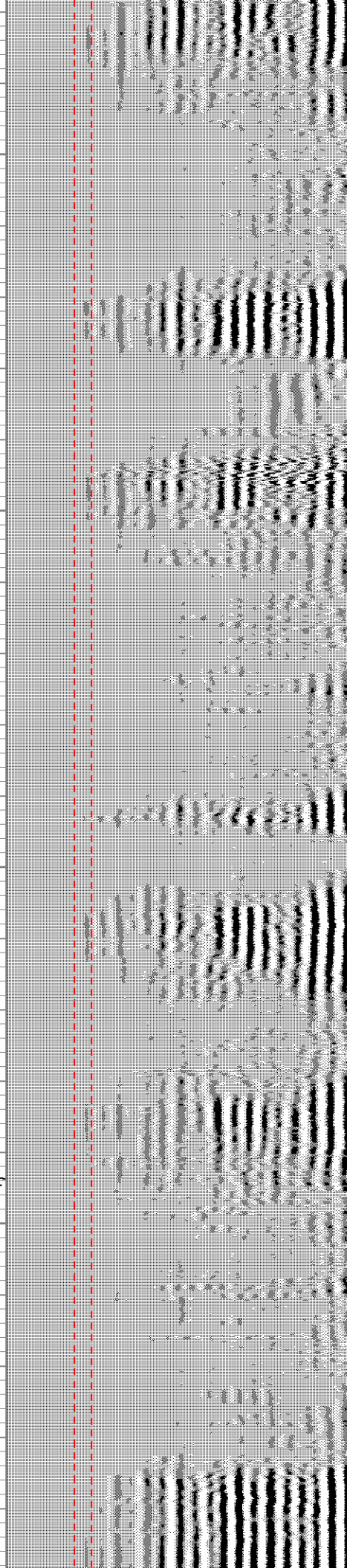
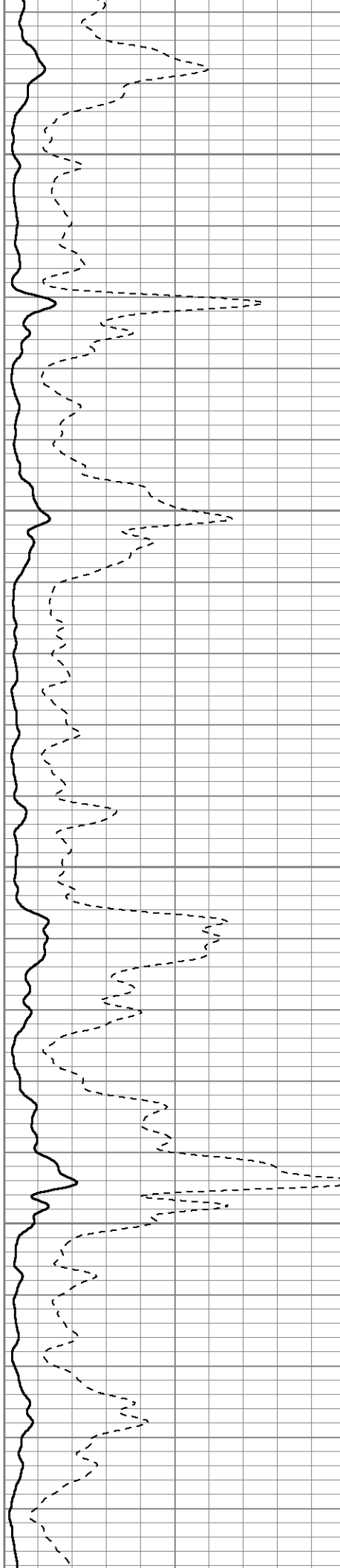


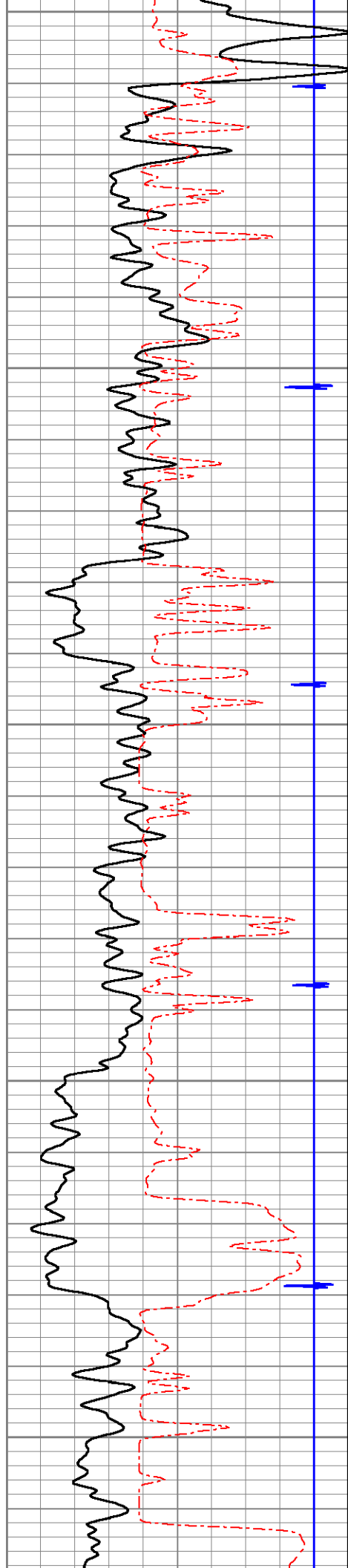
1300

1350

1400

1450





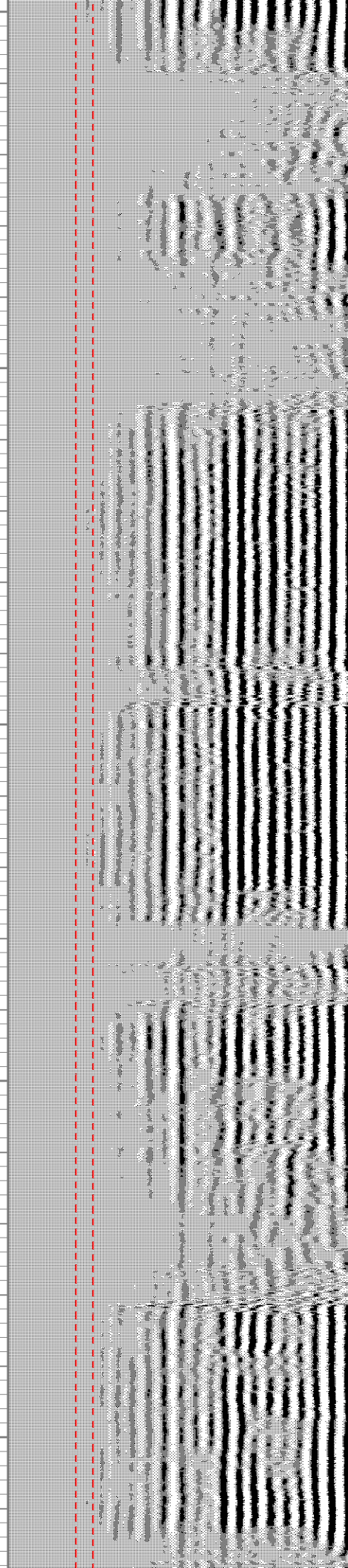
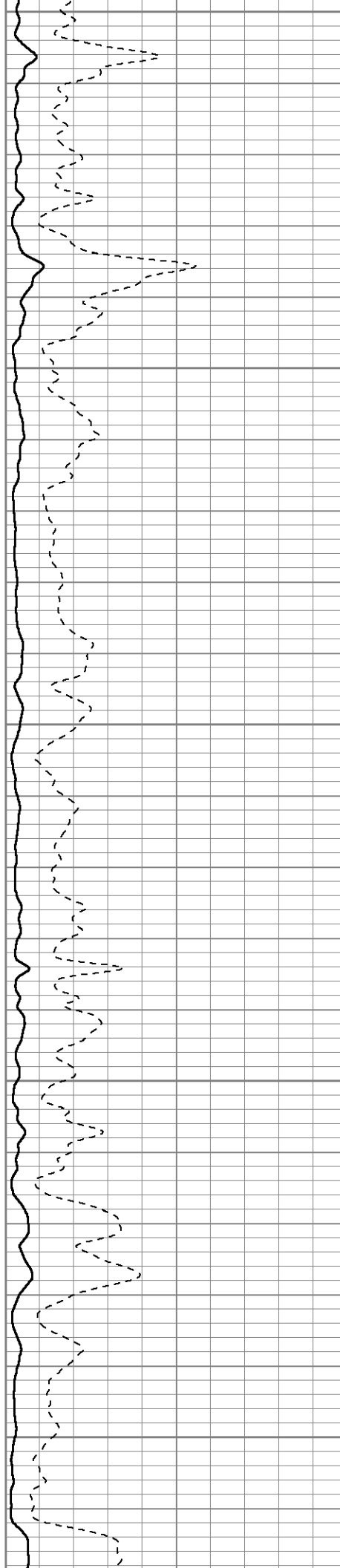
1500

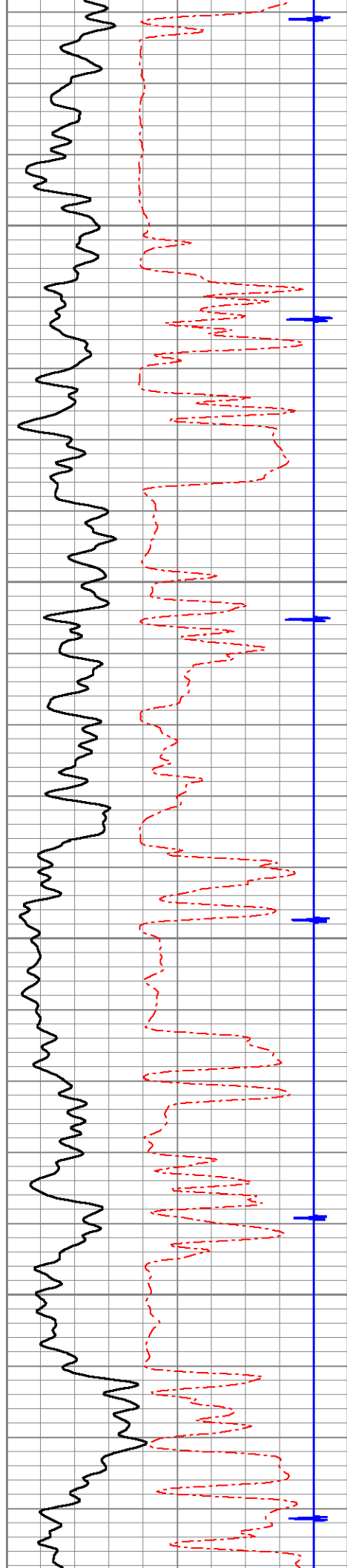
1550

1600

1650

1700



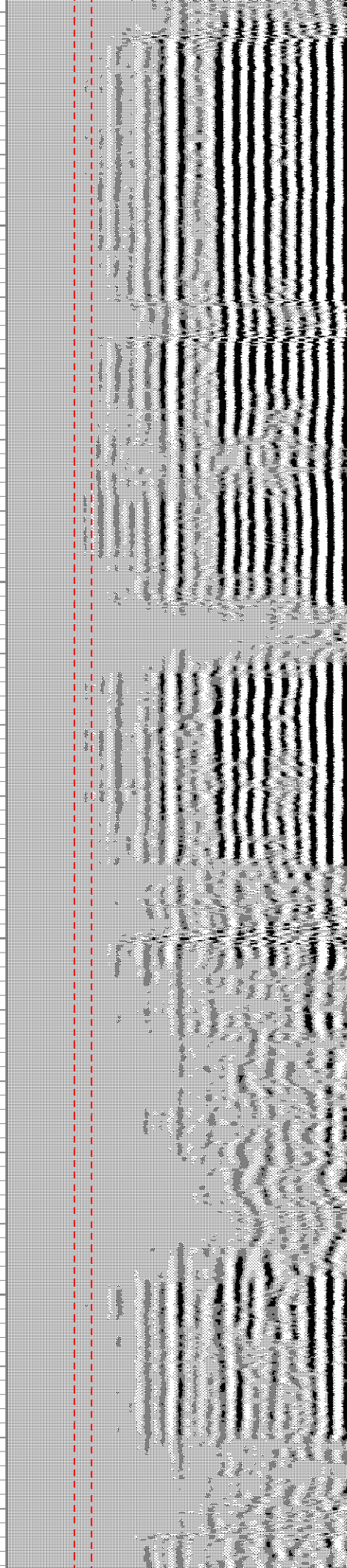
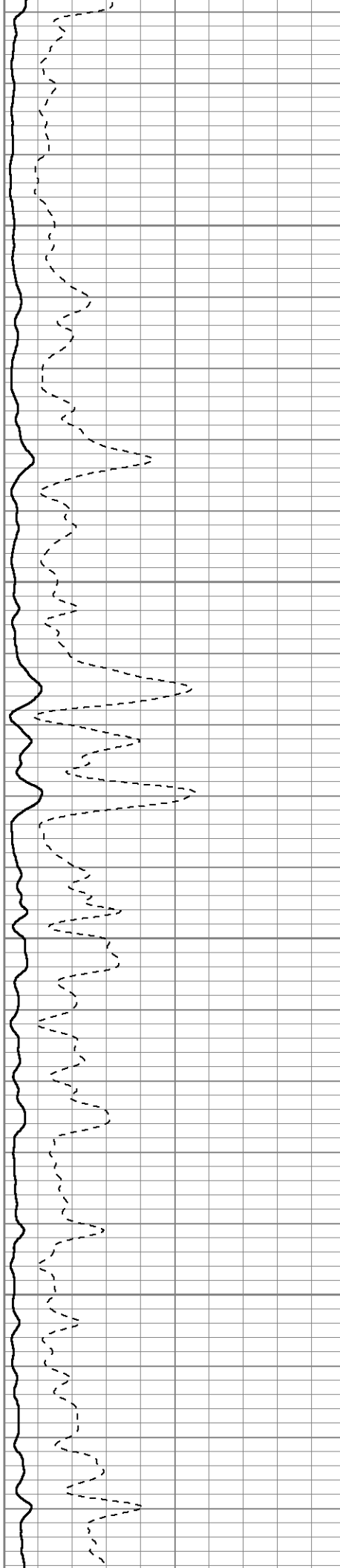


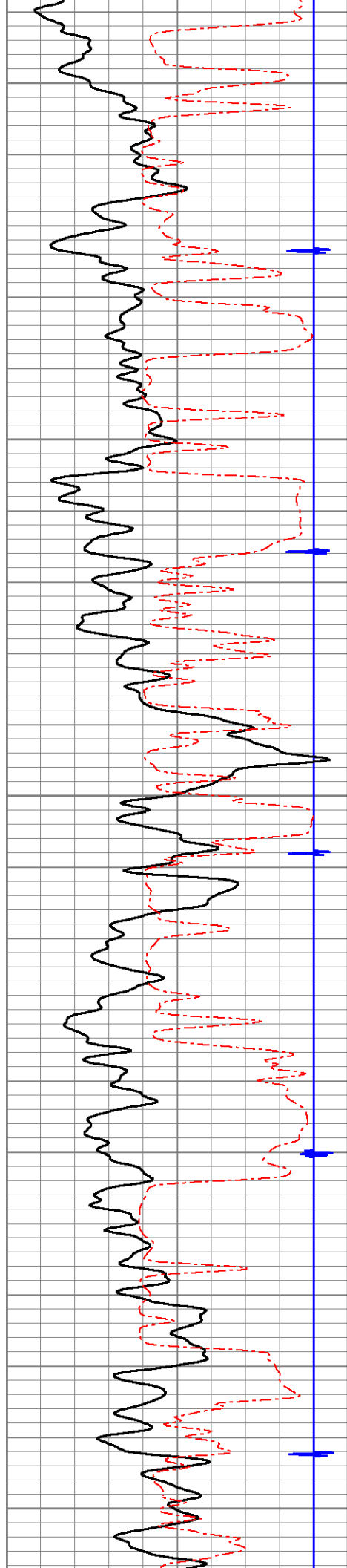
1750

1800

1850

1900





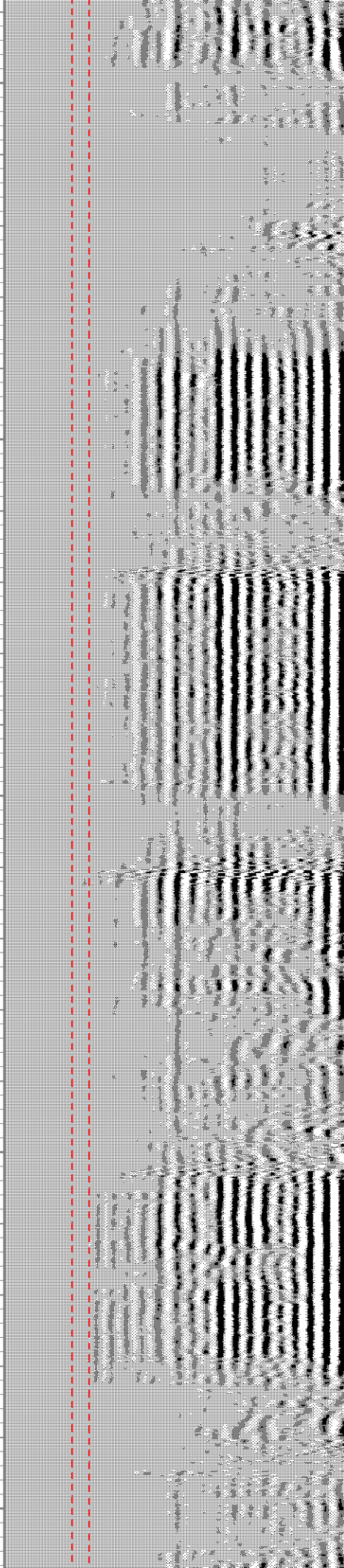
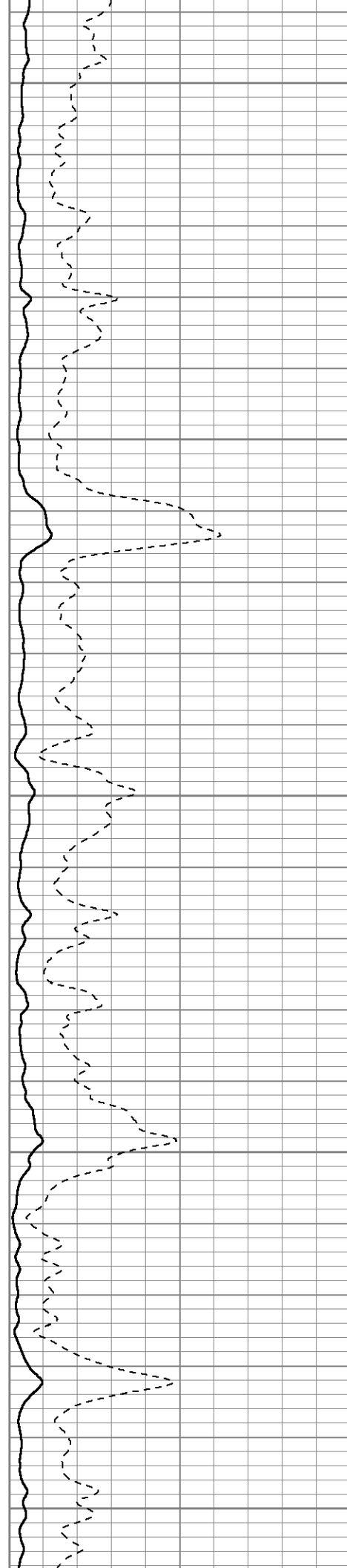
1950

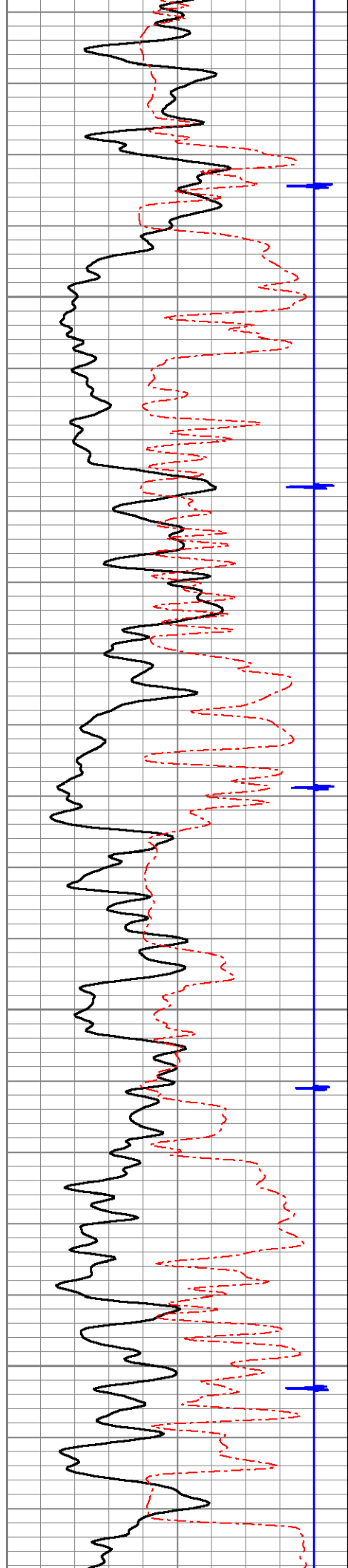
2000

2050

2100

2150



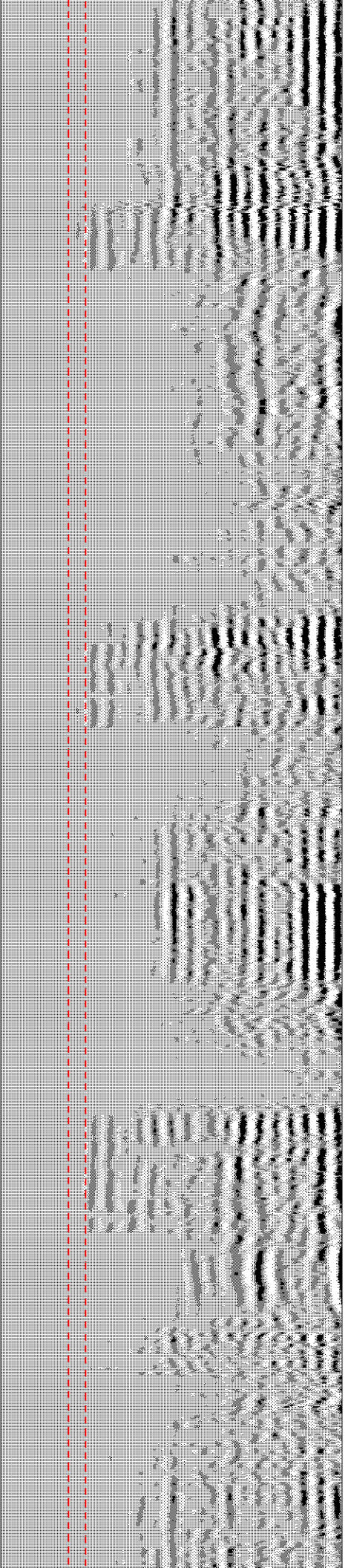
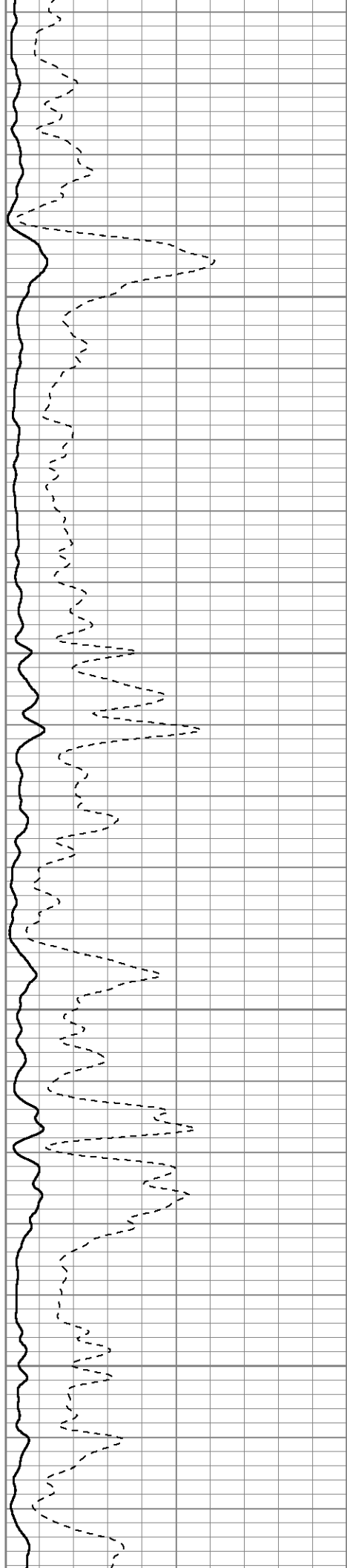


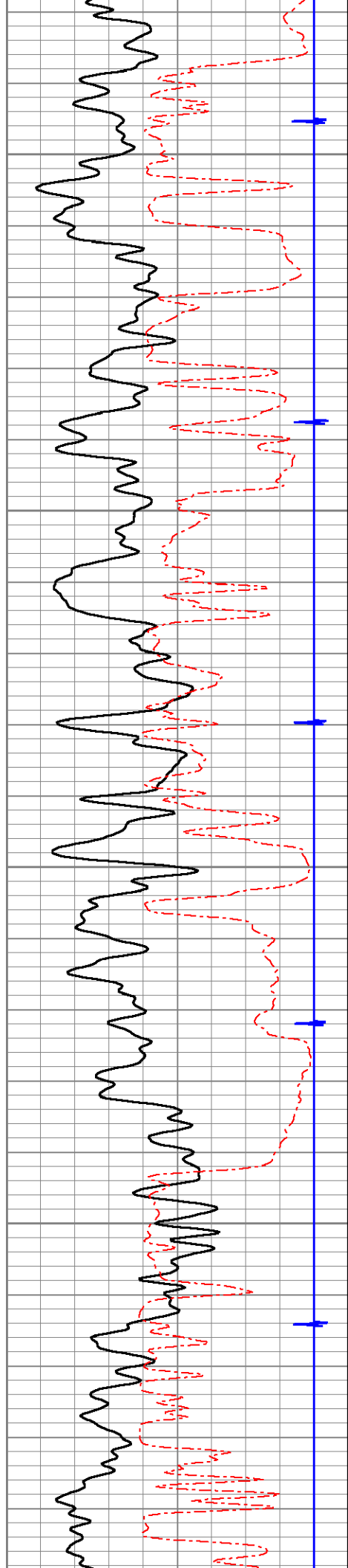
2200

2250

2300

2350



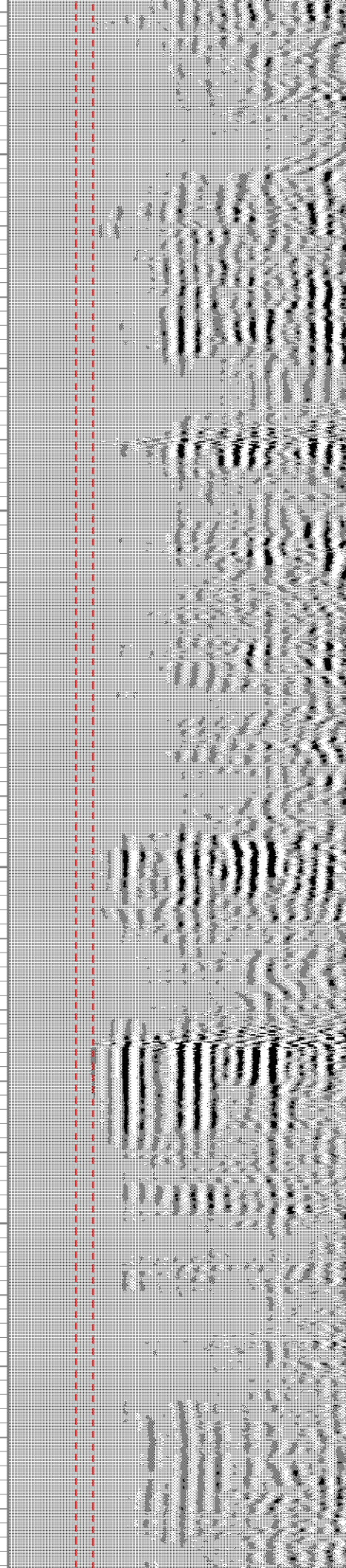
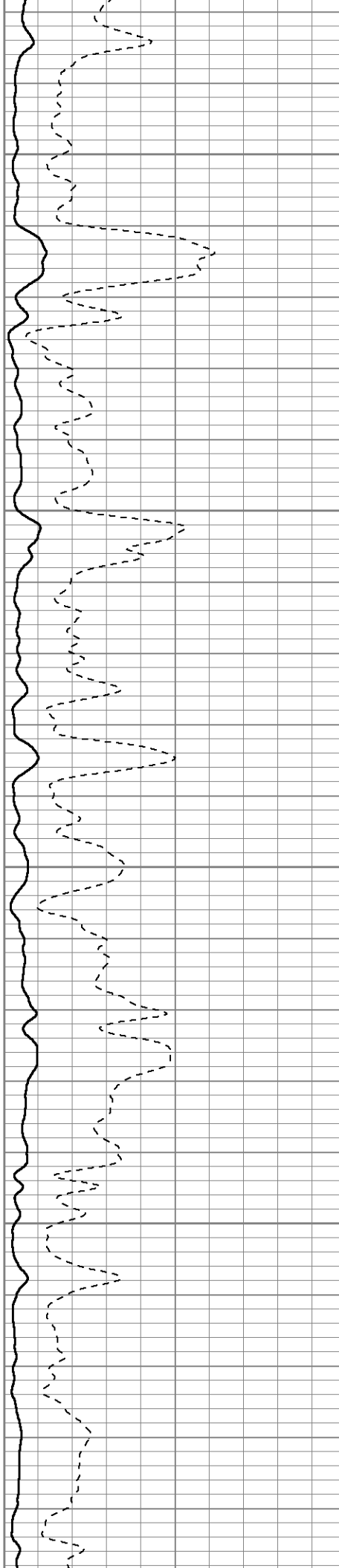


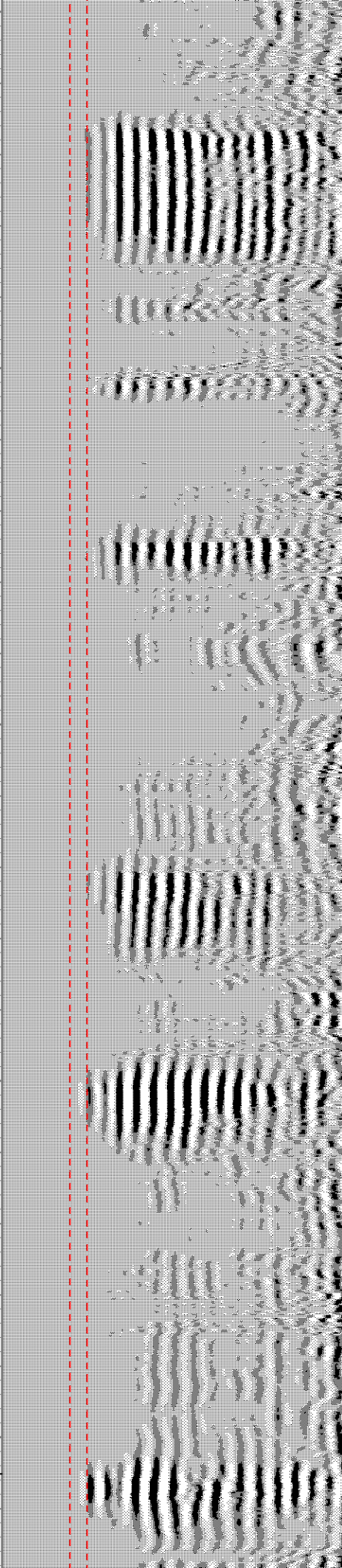
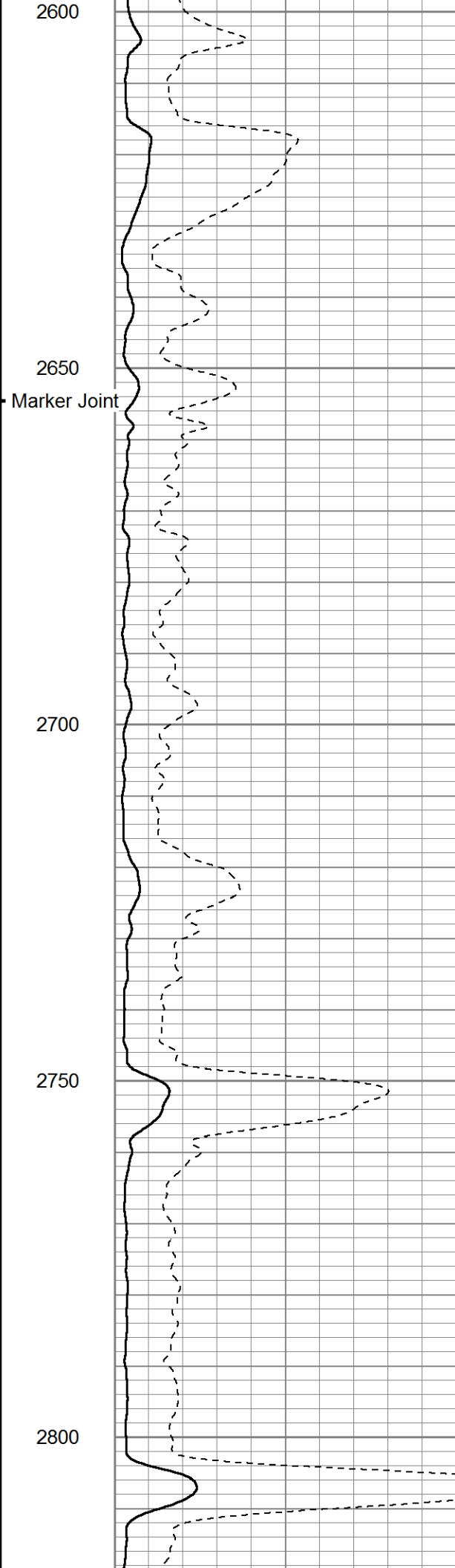
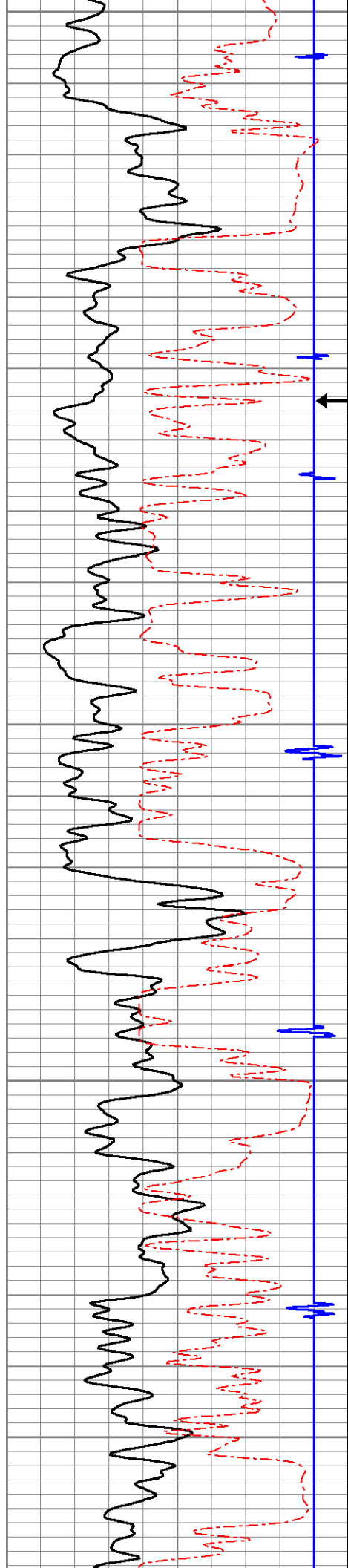
2400

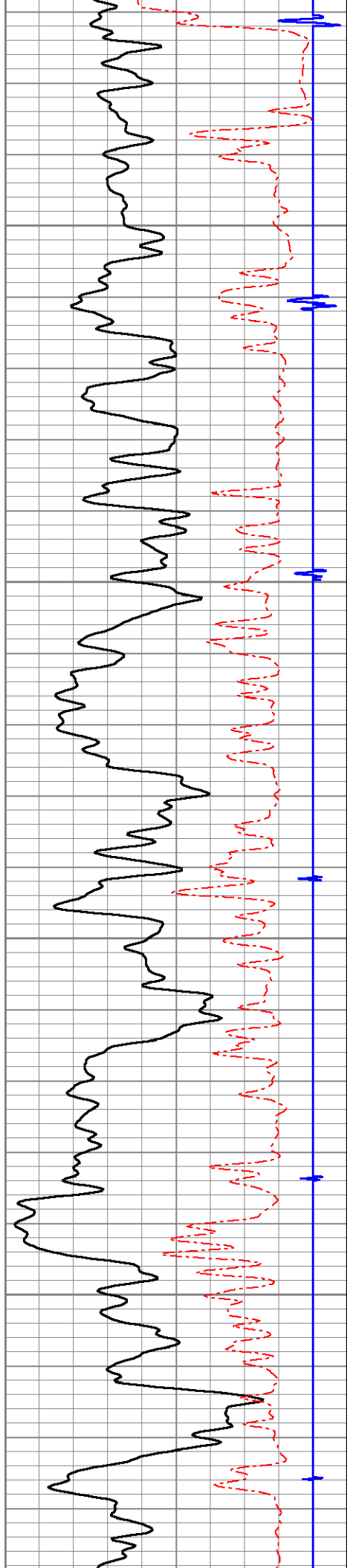
2450

2500

2550





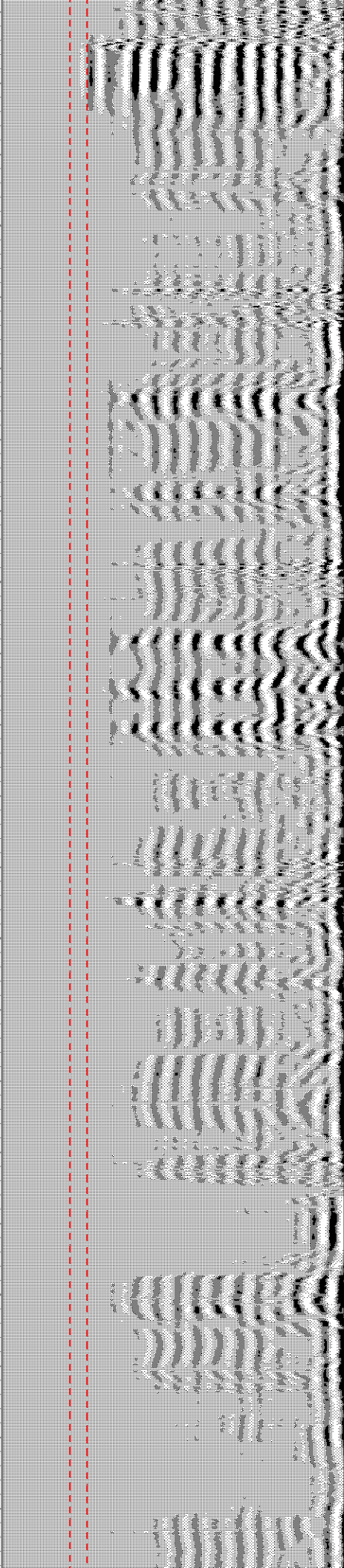
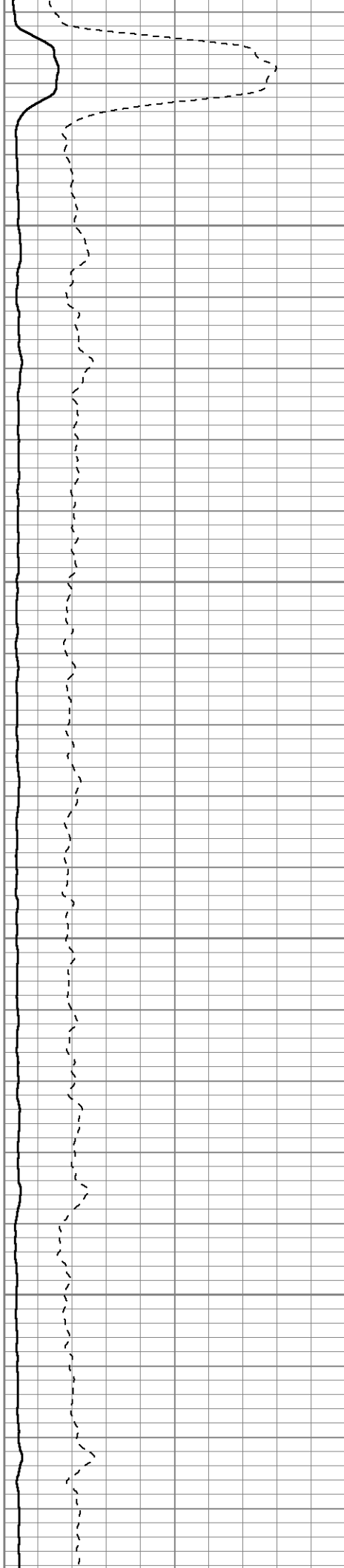


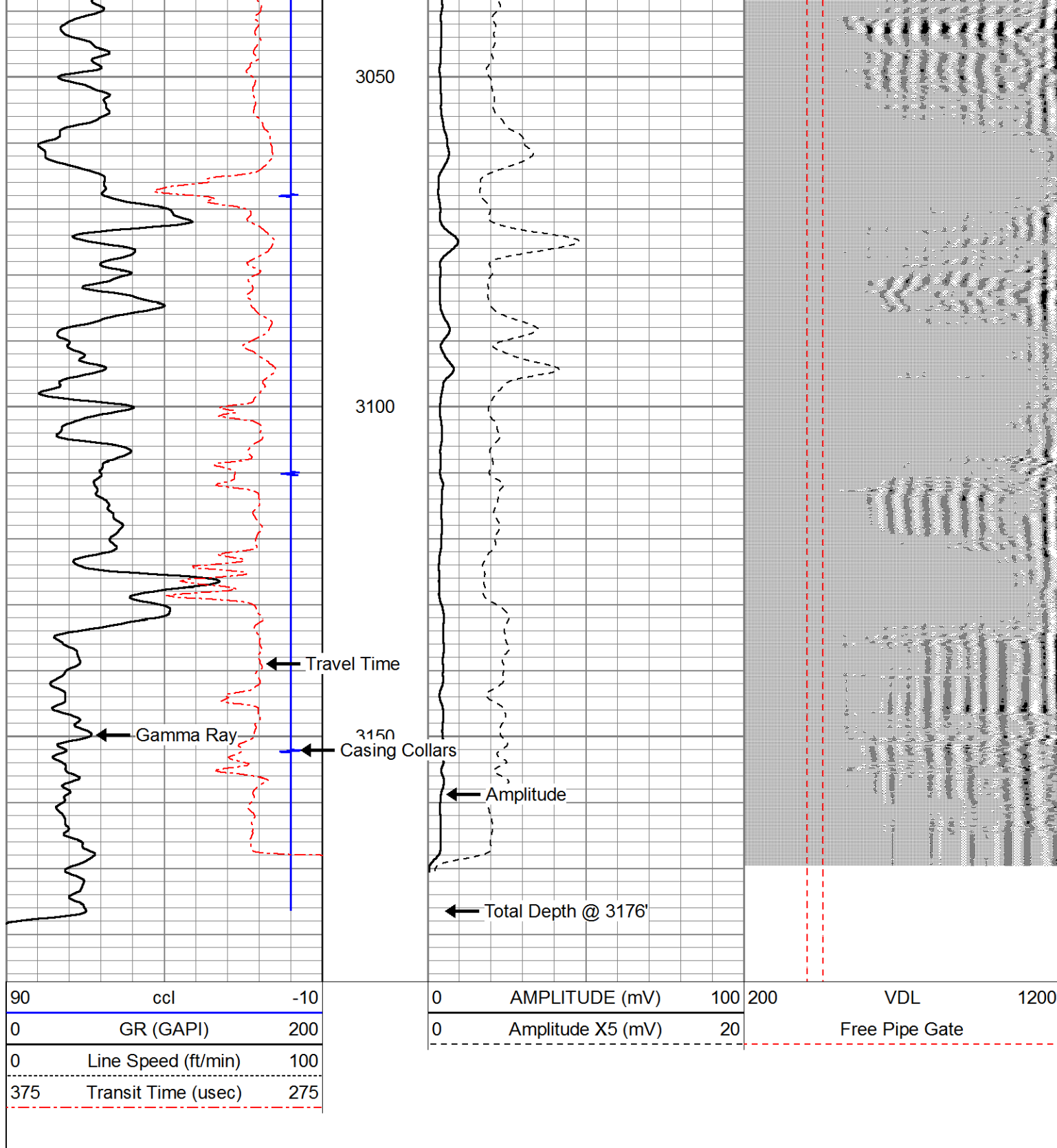
2850

2900

2950

3000





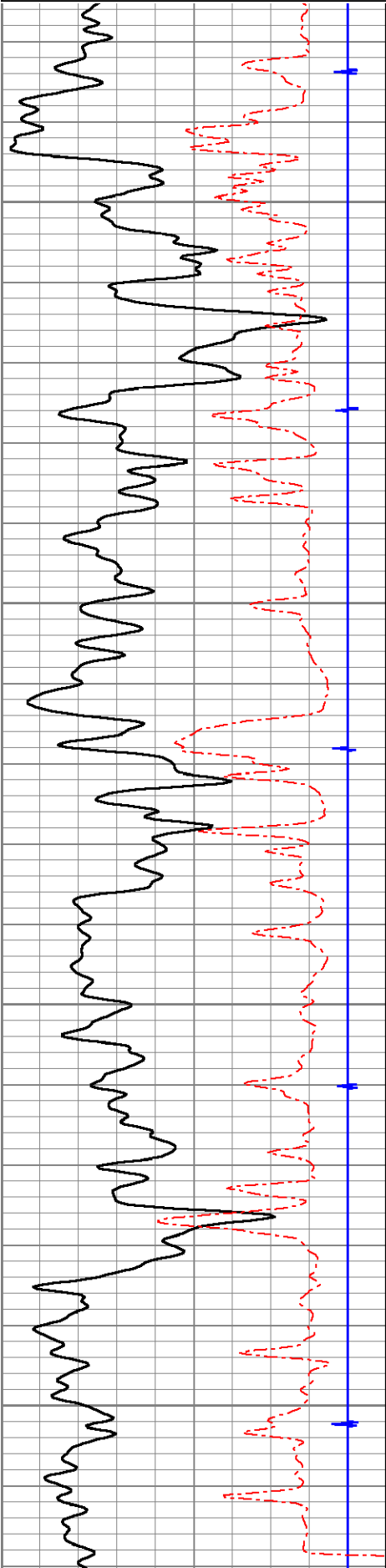
Repeat Pass 5"=100'

Database File: coleman_la_plata_34_7_33_1.db
 Dataset Pathname: pass2
 Presentation Format: cblwill
 Dataset Creation: Sat Jun 20 12:45:48 2015 by Log 7.0 B1
 Charted by: Depth in Feet scaled 1:240

90	ccl	-10
0	GR (GAPI)	200
0	Line Speed (ft/min)	100
375	Transit Time (usec)	275

0	AMPLITUDE (mV)	100	200
0	Amplitude X5 (mV)	20	

	VDL	1200
	Free Pipe Gate	

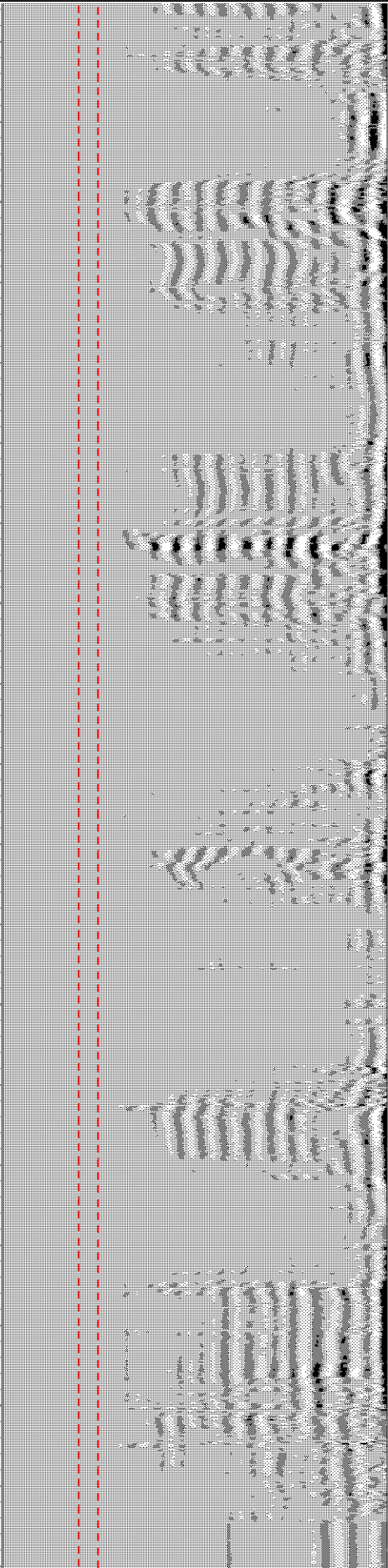
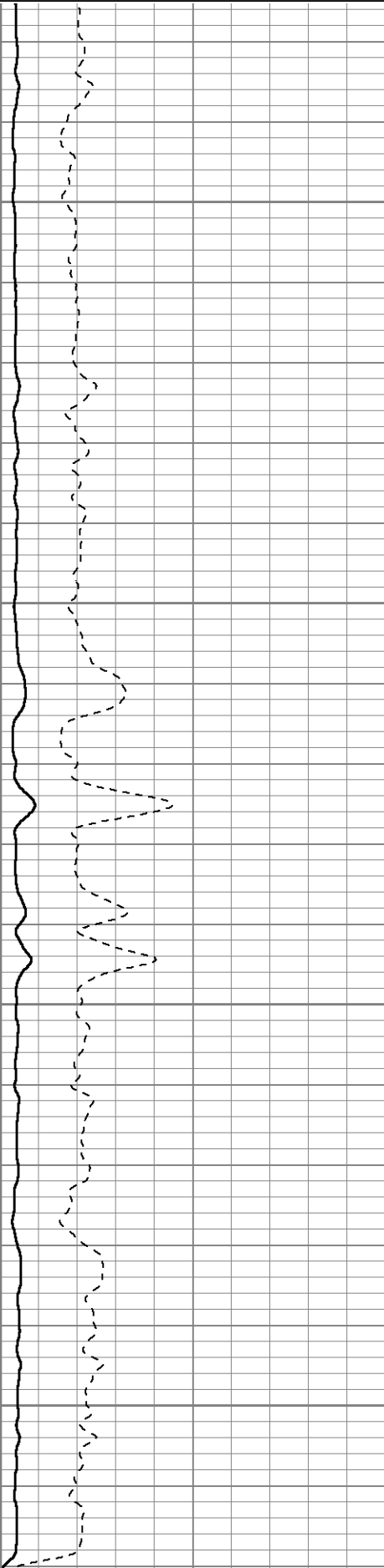


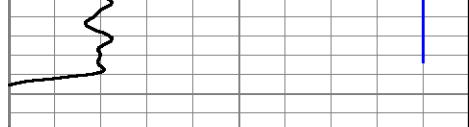
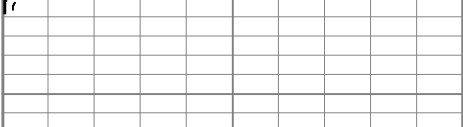
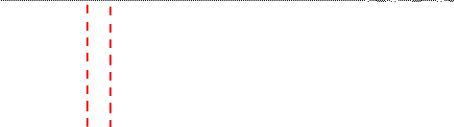
3000

3050

3100

3150



			
90 ccl -10	0 AMPLITUDE (mV) 100	200 VDL 1200	
0 GR (GAPI) 200	0 Amplitude X5 (mV) 20	Free Pipe Gate	
0 Line Speed (ft/min) 100			
375 Transit Time (usec) 275			

Log Variables

Database: C:\Warrior\Data\coleman_la_plata_34_7_33_1.db
Dataset: field/well/run1/pass3

Top - Bottom

PPT usec 0	CASEWGHT lb/ft 26	MAXAMPL mV 0	MINAMPL mV 1	MINATTN db/ft 0.8	SRFTEMP degF 0	CASEOD in 7	PERFS 0
TDEPTH ft 0	BOTTEMP degF 100	BOREID in 8.75					

Calibration Report

Database File: coleman_la_plata_34_7_33_1.db
Dataset Pathname: pass3
Dataset Creation: Sat Jun 20 12:50:36 2015 by Log 7.0 B1

Gamma Ray Calibration Report

Type / Serial: Probe275dig / PRO120673

SHOP CALIBRATION

Sat Jun 20 08:44:10 2015

Background	Counts/Sec.	Gain	Offset	Jig	Units
Calibrator	4.8				cps
	200.0				cps
		0.7000			GAPI/cps

PRIMARY VERIFICATION

Mon Apr 15 08:48:04 2013

Background	31.2				cps
Calibrator	201.6				cps
Difference				170.5	GAPI

BEFORE SURVEY VERIFICATION

Mon Apr 15 08:50:59 2013

Background	31.0				cps
Calibrator	187.7				cps
Difference				156.7	GAPI

AFTER SURVEY VERIFICATION

Mon Apr 15 10:37:02 2013

Background	30.1				cps
Calibrator	189.2				cps
Difference				159.1	GAPI

Segmented Cement Bond Log Calibration Report

Serial Number: Probe131119
Tool Model: Probe

Calibration Casing Diameter:	7.000	in
Calibration Depth:	37.808	ft

Master Calibration, performed Sat Jun 20 08:52:08 2015:

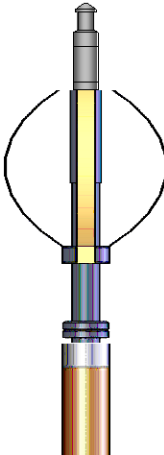
	Raw (v)		Calibrated (mv)		Results	
	Zero	Cal	Zero	Cal	Gain	Offset
3'	0.017	0.682	2.000	62.165	90.450	0.474
CAL	0.017	0.891				
5'	0.017	0.742	2.000	62.165	83.037	0.592
SUM						
S1	0.016	0.635	0.000	100.000	161.607	-2.612
S2	0.016	0.643	0.000	100.000	159.471	-2.573
S3	0.016	0.655	0.000	100.000	156.458	-2.544
S4	0.016	0.689	0.000	100.000	148.605	-2.422
S5	0.016	0.709	0.000	100.000	144.439	-2.382
S6	0.017	0.706	0.000	100.000	144.994	-2.402
S7	0.017	0.680	0.000	100.000	150.779	-2.499
S8	0.017	0.649	0.000	100.000	158.272	-2.651

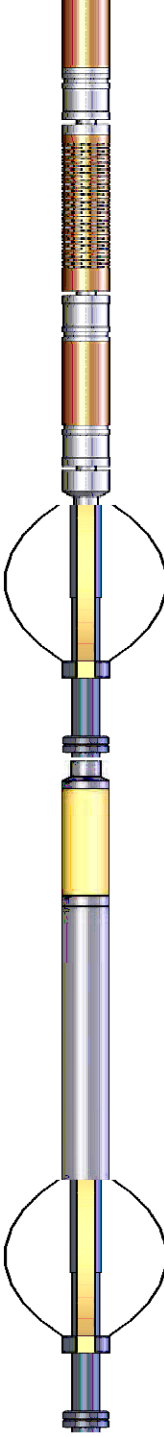
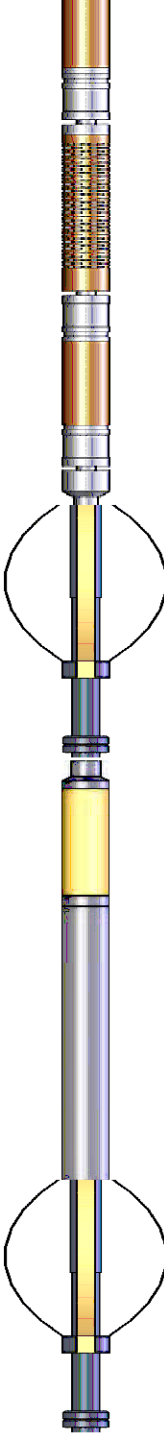
Internal Reference Calibration, performed Wed Dec 31 18:00:00 1969:

	Raw (v)		Calibrated (v)		Results	
	Zero	Cal	Zero	Cal	Gain	Offset
CAL	0.000	0.000	0.017	0.891	1.000	0.000

Air Zero Calibration, performed Sat Jun 20 08:50:31 2015:

	Raw (v)		Calibrated (v)		Results	
	Zero		Zero		Offset	
3'	0.000		0.000		0.000	
5'	0.000		0.000		0.000	
SUM						
S1	0.000		0.000		0.000	
S2	0.000		0.000		0.000	
S3	0.000		0.000		0.000	
S4	0.000		0.000		0.000	
S5	0.000		0.000		0.000	
S6	0.000		0.000		0.000	
S7	0.000		0.000		0.000	
S8	0.000		0.000		0.000	

Sensor	Offset (ft)	Schematic	Description	Len (ft)	OD (in)	Wt (lb)
			1.4375CHD Titan Cable Head 1 7/16	1.00	1.44	10.00
			Probe Probe 2 3/4 Centralizer	2.88	2.75	20.00

WVF3FT	14.72		RBT-Probe (Probe131119) Probe 2.75" Radii Bond Tool	7.00	2.75	90.00
WVFCAL	14.72					
WVFS1	14.72					
WVFS2	14.72					
WVFS3	14.72					
WVFS4	14.72					
WVFS5	14.72					
WVFS6	14.72					
WVFS7	14.72					
WVFS8	14.72					
WVF5FT	13.72		Probe Probe 2 3/4 Centralizer	2.88	2.75	20.00
CCL	6.75					
DCCL	6.75					
GR	5.42		GR-Probe275dig (PRO120673) Probe Digital Gamma CCL	4.78	2.75	57.00
			Probe Probe 2 3/4 Centralizer	2.88	2.75	20.00
Dataset: coleman_la_plata_34_7_33_1.db: field/well/run1/pass3 Total Length: 21.41 ft Total Weight: 217.00 lb O.D. 2.75 in						

Company Coleman Oil & Gas, Inc.

Well La Plata 34-7-33 #1

Field Blanco Ignacio

County La Plata

State Colorado



Cement Bond
Gamma Ray / CCL
Log