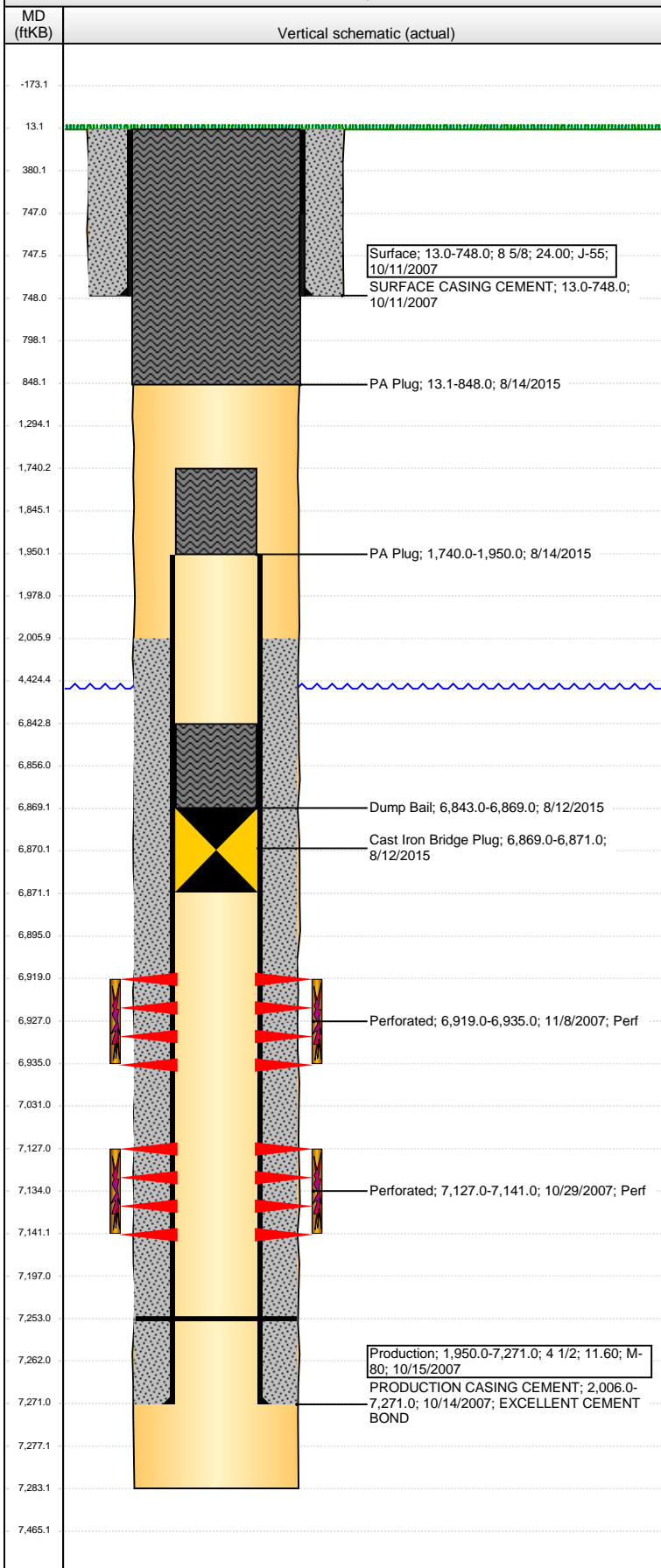


**Well Name: MOSER H34-21**

DEVIATED - ORIGINAL HOLE, 9/2/2015 4:31:37 PM



Well Header									
API 05-123-26310		Business Unit DJ BASIN		District 15		Well Config DEVIATED			
Original KB Elevation (ft) 4,843.00		KB - GL / MSL (ftKB) 13.00		Spud Date 10/10/2007		P & A Date 8/12/2015			
Comment									
Directions To Well RD 28 & RD 43, SOUTH 50', EAST 4/10, SOUTH INTO ON WEST SIDE DITCH 4/10									
Congressional Location									
Quarter 1	Quarter 2	Quarter 3 SE	Quarter 4 NW	Section 34	Township 3 N	Twnshp N...	Range 65	Rng E/W Dir W	
Bottom Hole Location									
North-South Distance (ft)		From N or S Line		East-West Distance (ft)		From E or W Line			
Plug Back Total Depths									
Date	Depth (ftKB)		Method		Com				
10/14/2007	7,253.0								
Wellbore Sections									
Section Des			Size (in)		Act Top, MD (ftKB)		Act Btm, MD (ftKB)		
SURFACE			12 1/4		13.0		748.0		
PRODUCTION			7 7/8		748.0		7,283.0		
Zone Statuses									
Zone Name		Status Date	Status	Fluid Type	Job	Prod Method			
NIOBRARA		2/7/2008	PR	Gas	DRILLING/CO...	Flowing			
NIOBRARA		5/18/2009	PR						
NIOBRARA		2/19/2010	PR	Water					
NIOBRARA		8/12/2015	P&A	Gas	ABANDON WE...	Flowing			
CODELL		2/7/2008	PR	Gas	DRILLING/CO...				
CODELL		2/19/2010	PR	Water					
CODELL		8/12/2015	P&A	Gas	ABANDON WE...				
Casing Strings									
Surface, 748.0ftKB									
Casing Description Surface		Run Date 10/11/2007	OD (in) 8 5/8	Wt/Len (l... 24.00	Grade J-55	Top, MD (ft... 13.0	MD (ftKB) 748.0		
Production, 7,271.0ftKB									
Casing Description Production		Run Date 10/15/2007	OD (in) 4 1/2	Wt/Len (l... 11.60	Grade M-80	Top, MD (ft... 13.0	MD (ftKB) 7,271.0		
Cement									
Description SURFACE CASING CEMENT					Top Depth (ftKB) 13.0		Bottom Depth (ftKB) 748.0		
Description PRODUCTION CASING CEMENT					Top Depth (ftKB) 2,006.0		Bottom Depth (ftKB) 7,271.0		
Description Dump Bail					Top Depth (ftKB) 6,843.0		Bottom Depth (ftKB) 6,869.0		
Description PA Plug					Top Depth (ftKB) 1,740.0		Bottom Depth (ftKB) 1,950.0		
Description PA Plug					Top Depth (ftKB) 13.1		Bottom Depth (ftKB) 848.0		
Tubing Strings									
Tubing Description Tubing - Production		Run Date 7/16/2008	String... 2 3/8	ID (in) 1.995	Wt (lb/ft) 4.70	Grade J-55	Len (ft) 7,090.52	Set De...	
Tubing Description Tubing - Production		Run Date 8/27/2014	String... 2 3/8	ID (in) 1.995	Wt (lb/ft) 4.70	Grade J-55	Len (ft) 7,100.00	Set De...	
Perforation Data									
Zone		Bnch/St g	Entered Shot Total	Top (ftKB)		Btm (ftKB)		Date	
NIOBRARA, ORIGINAL HOLE			64	6,919.00		6,935.00		11/8/2007	
CODELL, ORIGINAL HOLE			56	7,127.00		7,141.00		10/29/2007	
Stimulations & Treatments									
Date 11/8/2007	Zone NIOBRARA, ORIGINAL HOLE			Primary Job Type DRILLING/COMPLETION - ORIGINAL					
Technical Result Success			Tech Result Details According to Plan			Tech Result Note			
Comment									

**Well Name: MOSER H34-21**

DEVIATED - ORIGINAL HOLE, 9/2/2015 4:31:40 PM

## Stimulations & Treatments

Date 11/8/2007	Zone CODELL, ORIGINAL HOLE	Primary Job Type DRILLING/COMPLETION - ORIGINAL
Technical Result Success	Tech Result Details According to Plan	Tech Result Note
Comment		

## Other In Hole

Run Date	Des	OD (in)	Top (ftKB)	Btm (ftKB)
8/12/2015	Cast Iron Bridge Plug	3.99	6,869.0	6,871.0

## Logs

Date	Type	Top, MD (ftKB)	Btm, MD (ftKB)
10/14/2007	Compensated Density	2,600.0	7,283.0
10/14/2007	Induction	738.0	7,283.0
10/25/2007	Cement Bond	1,800.0	7,283.0
11/25/2013	GYRO	12.5	7,000.0

