

RADIAL CEMENT BOND LOG
GAMMA RAY
CCL

Company		Kerr McGee Oil & Gas	
Well		PEAKS 33-2	
Field		Wattenberg	
County		Weld	
State		CO	
Location:		API # : 05-123-32125	
Permanent Datum		GL	Elevation
Log Measured From		KB 15'	5032'
Drilling Measured From		KB	Elevation
			K.B. 5047'
			D.F. 5046'
			G.L. 5032'
Other Services			
SEC 2 TWP 1N RGE 68W			
SHL: 1293' FSL 1601' FWL CW/SW			
LAT 40.07660 LONG -104.97420			
8-14-2015			
ONE			
8590'			
1707'			
1704'			
SURFACE			
7 7/8			
WATER			
1.0			
97			
596'			
NA			
NA			
7770			
GREELEY			
A.STEERMAN			
NICK L.			
Borehole Record			
Tubing Record			
Run Number			
Bit			
From			
To			
Size			
Weight			
From			
To			
Casing Record			
Surface String			
8 5/8			
24#			
0			
930'			
Prot. String			
4 1/2			
11.6#			
0			
8577'			
Liner			

<<< Fold Here >>>

All interpretations are opinions based on inferences from electrical or other measurements and we cannot and do not guarantee the accuracy or correctness of any interpretation, and we shall not, except in the case of gross or willful negligence on our part, be liable or responsible for any loss, costs, damages, or expenses incurred or sustained by anyone resulting from any interpretation made by any of our officers, agents or employees. These interpretations are also subject to our general terms and conditions set out in our current Price Schedule.

Comments

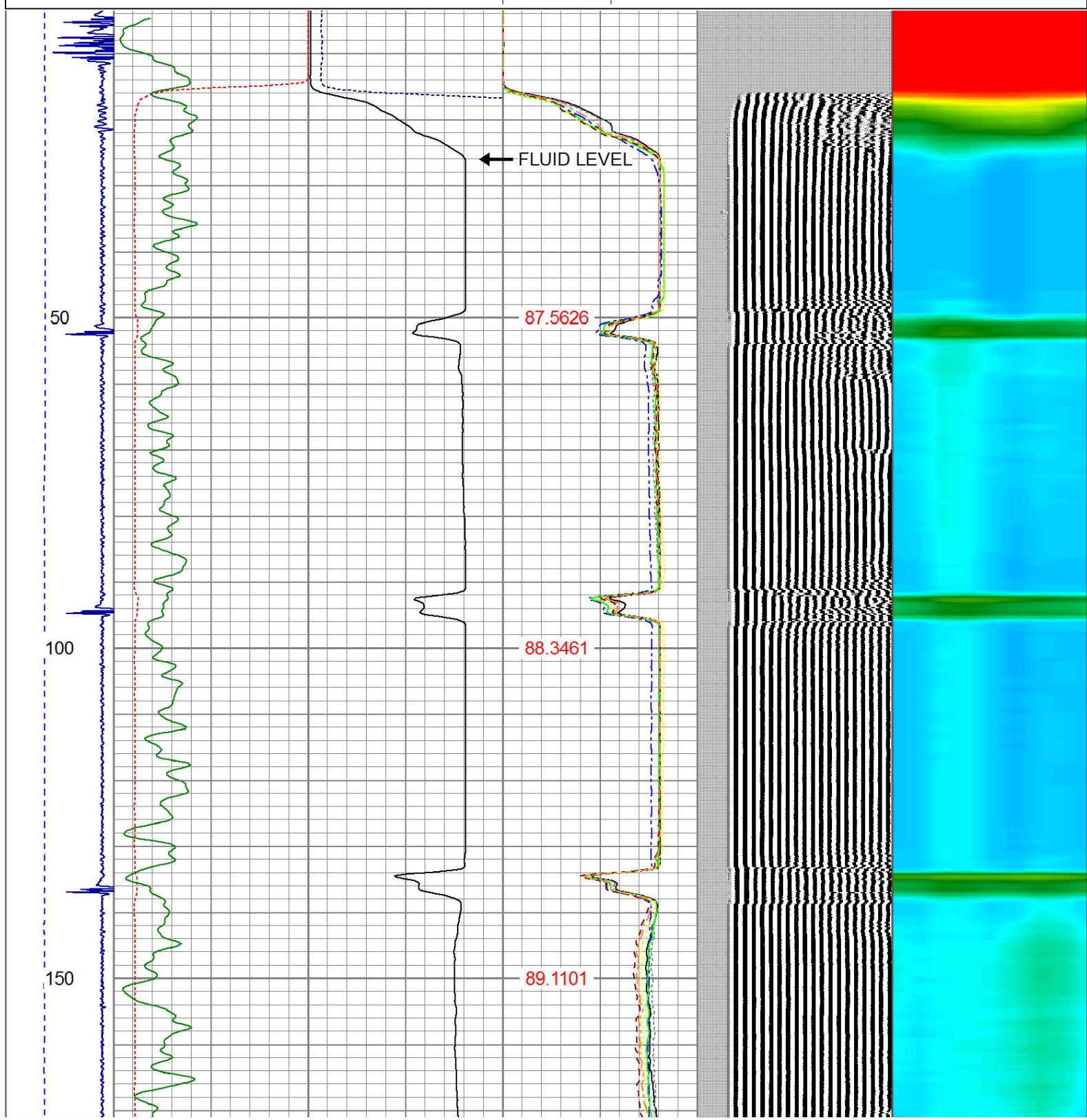
NOT CORROLATED
WELL LOADED BEFORE ARIVING
RAN CBL TO VERIFY CEMENT.

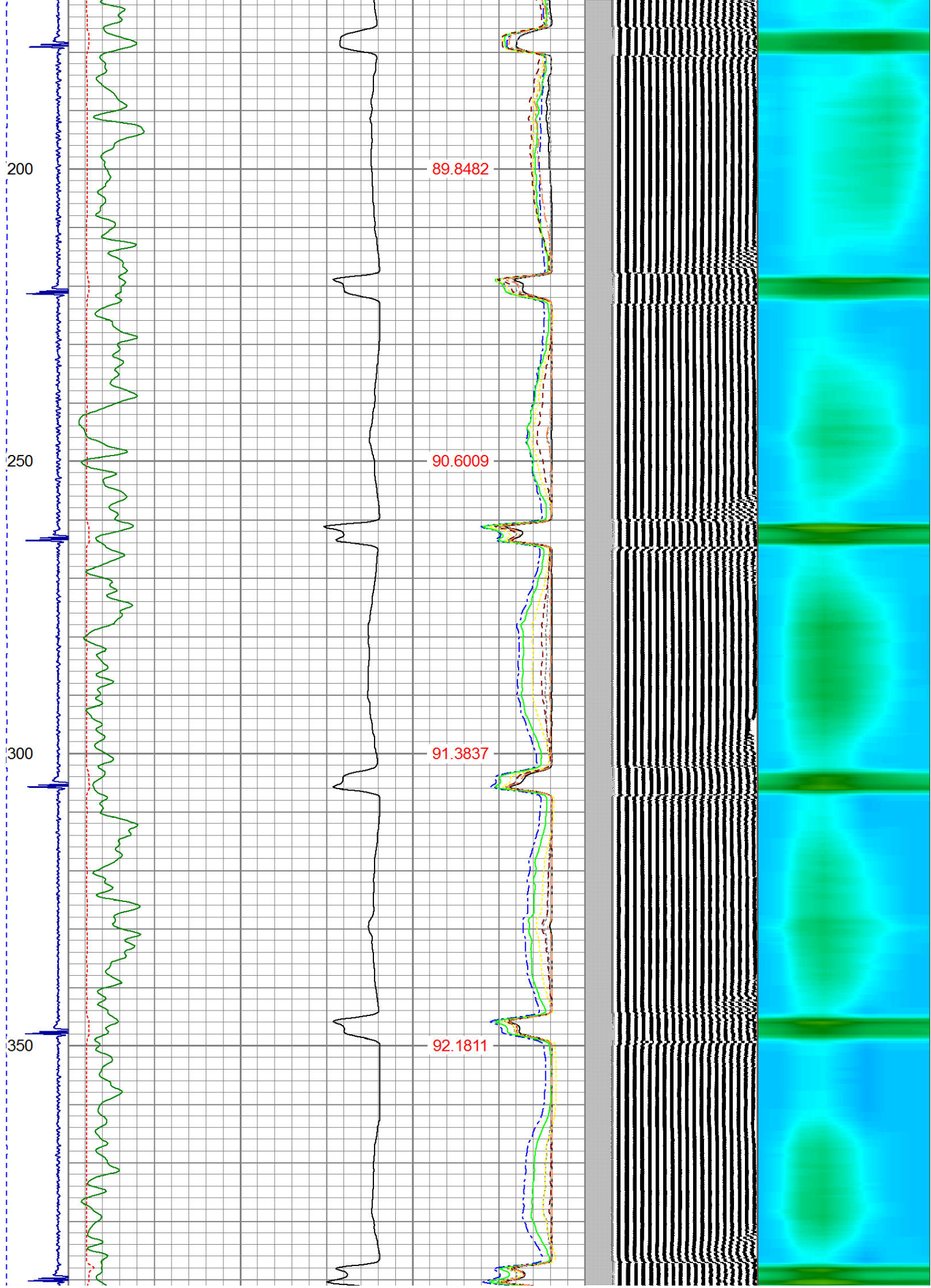
THANK YOU FOR USING WARRIOR ENERGY!

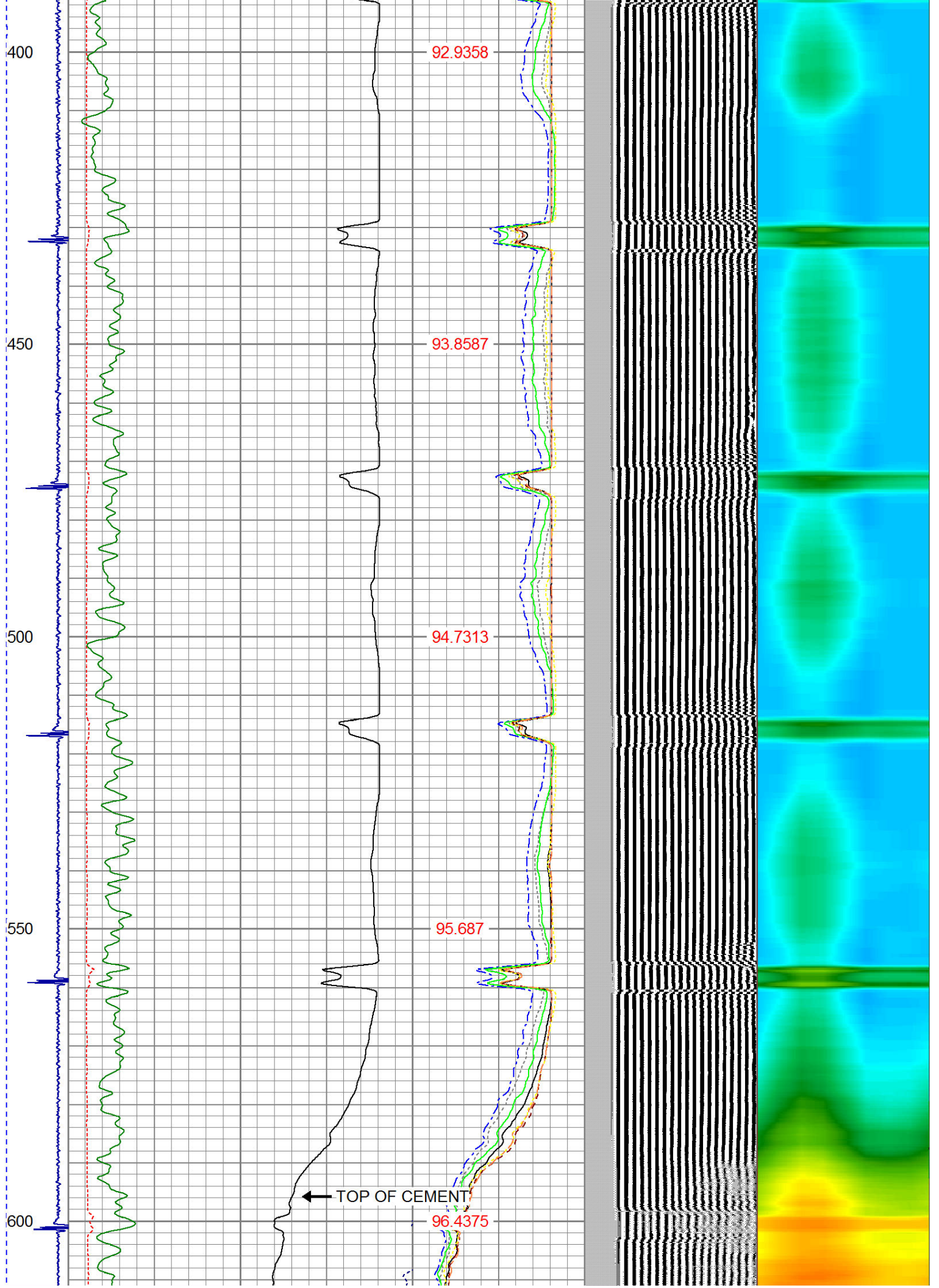
Sensor	Offset (ft)	Schematic	Description	Len (ft)	OD (in)	Wt (lb)

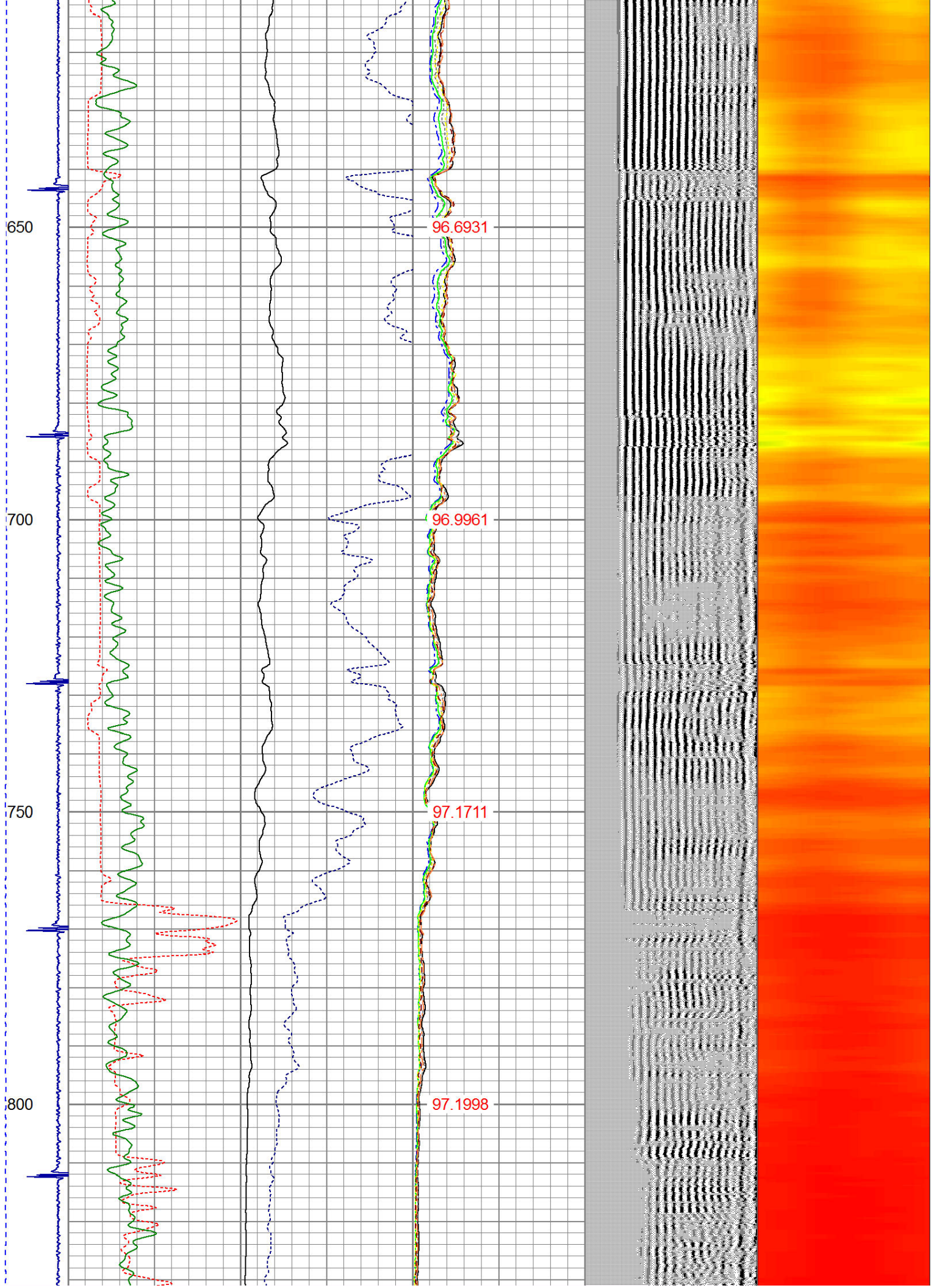
			PTS275	2.83	2.75	
HEADVOLT	16.13					
IntTemp	14.71					
WVF3FT	11.46		RBT-Probe (Base)	8.92	2.75	90.00
WVFCAL	11.46		Probe Radii Bond Tool with Digital Telemetry			
WVFS1	11.46					
WVFS2	11.46					
WVFS3	11.46					
WVFS4	11.46					
WVFS5	11.46					
WVFS6	11.46					
WVFS7	11.46					
WVFS8	11.46					
WVF5FT	10.46					
CNLSC	6.00		CNT-Probe_B (275)	2.88	2.75	40.00
CNSSC	5.17		6 bow centralizer			
CCL	3.64					
			GR-Probe (275)	4.33	2.75	30.00
			Probe 2.75"			
GR	0.90					
Dataset: peaks 33-2.db: field/well/run1/pass3 Total Length: 18.96 ft Total Weight: 160.00 lb O.D. 2.75 in						

-9	CCL	1	200	TT (usec)	800	0	AMP (mV)	100	0	AMPS1	100	200	VDL	1200	1	Cement Map	8
	LSPD		0	GR (GAPI)	200	0	AMPx5 (mV)	20	0	AMPS2	100				1		100
	(ft/min)		200	GR (GAPI)	400				0	AMPS4	100						
0		250							0	AMPS5	100						
									0	AMPS6	100						
									0	AMPS7	100						
									0	AMPS8	100						
									IntTemp								
									(degF)								









850

900

950

1000

1050

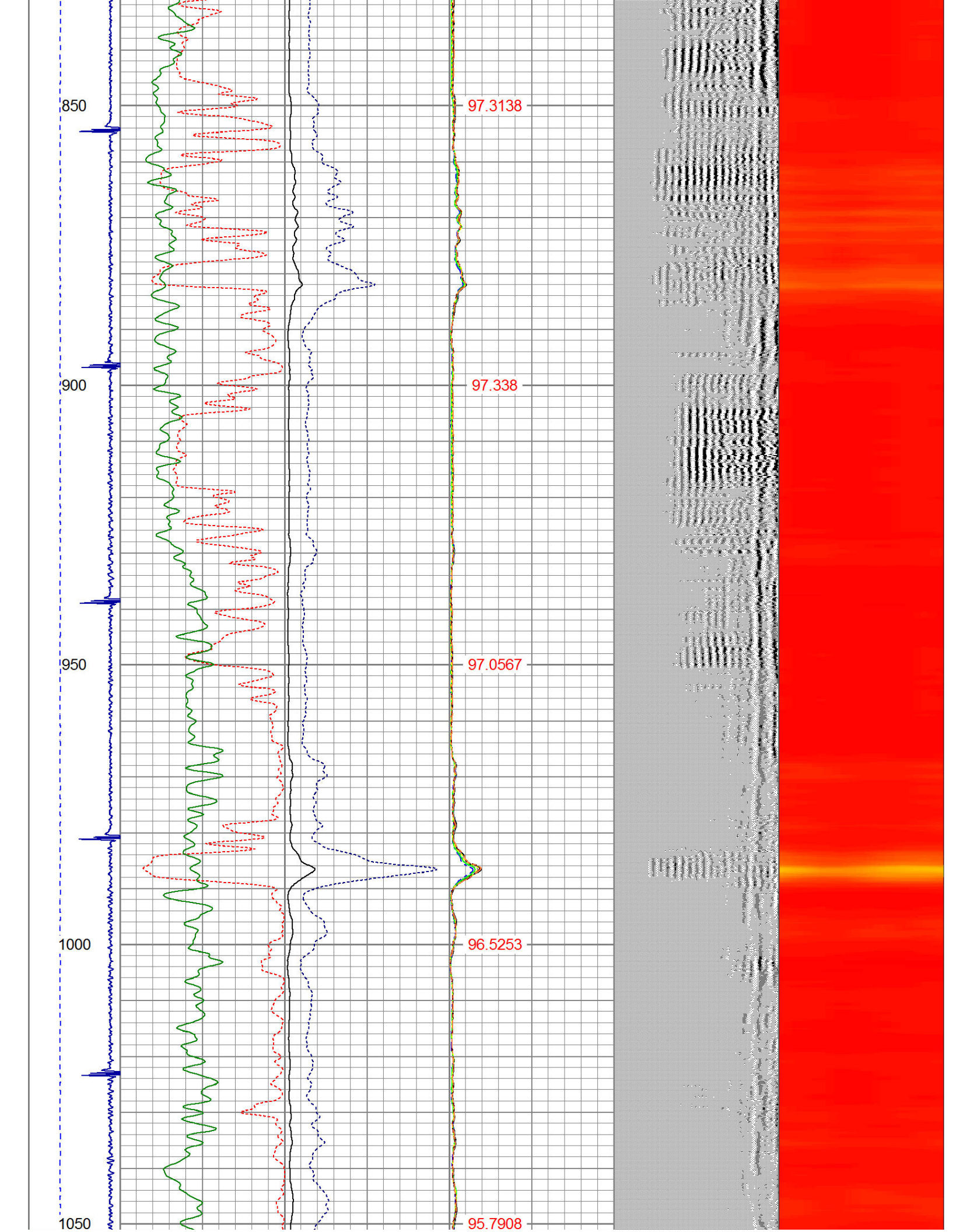
97.3138

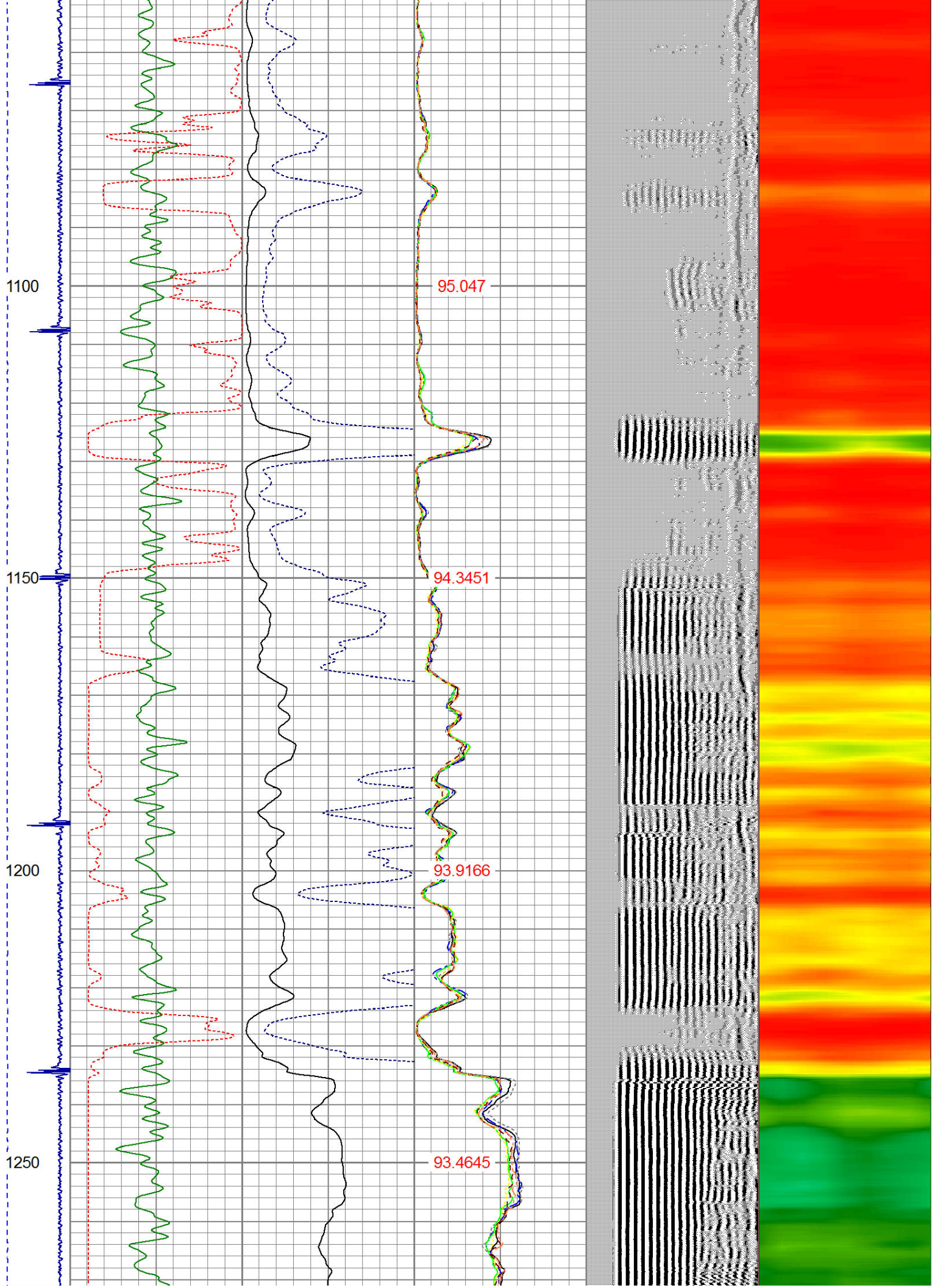
97.338

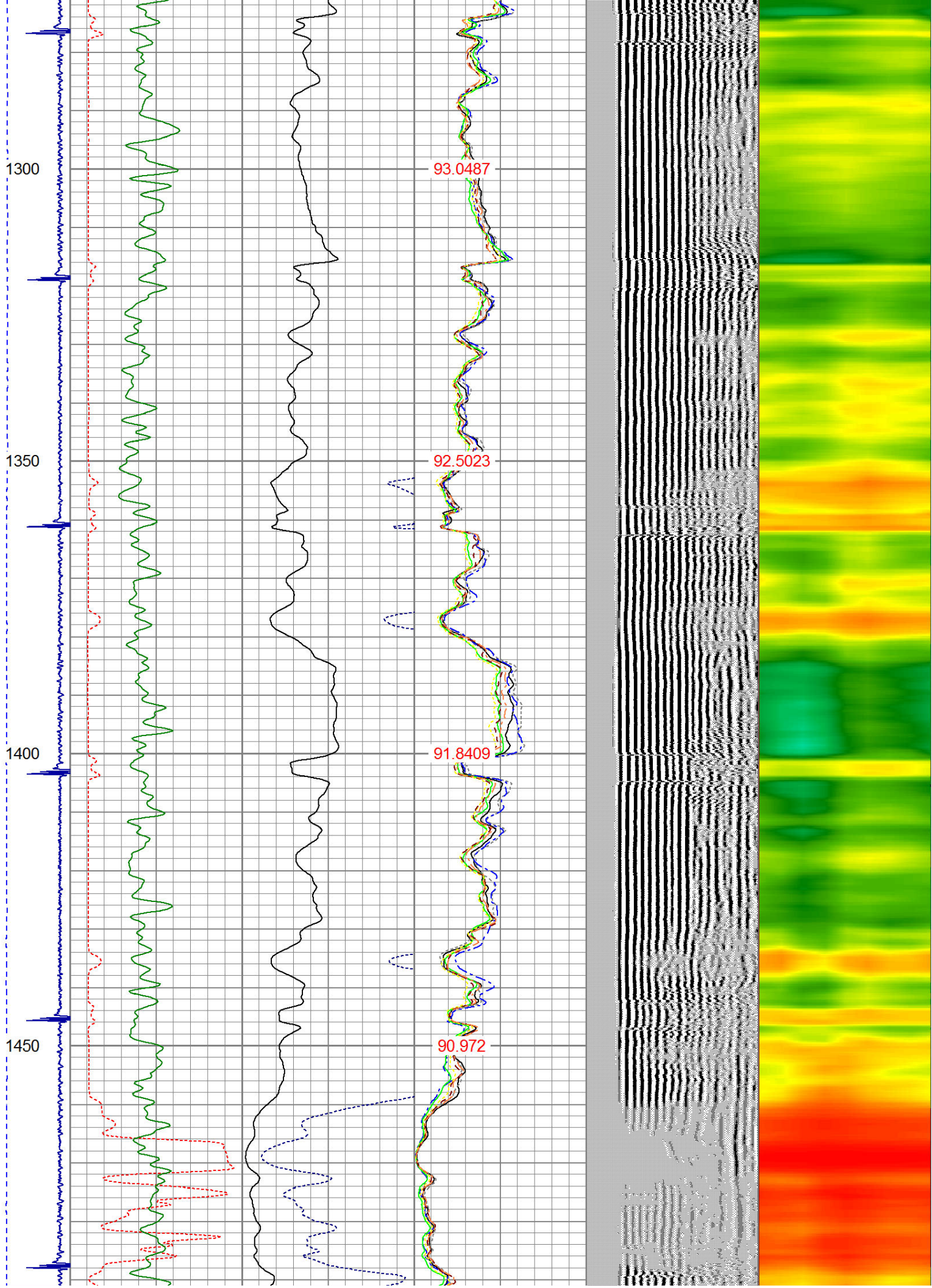
97.0567

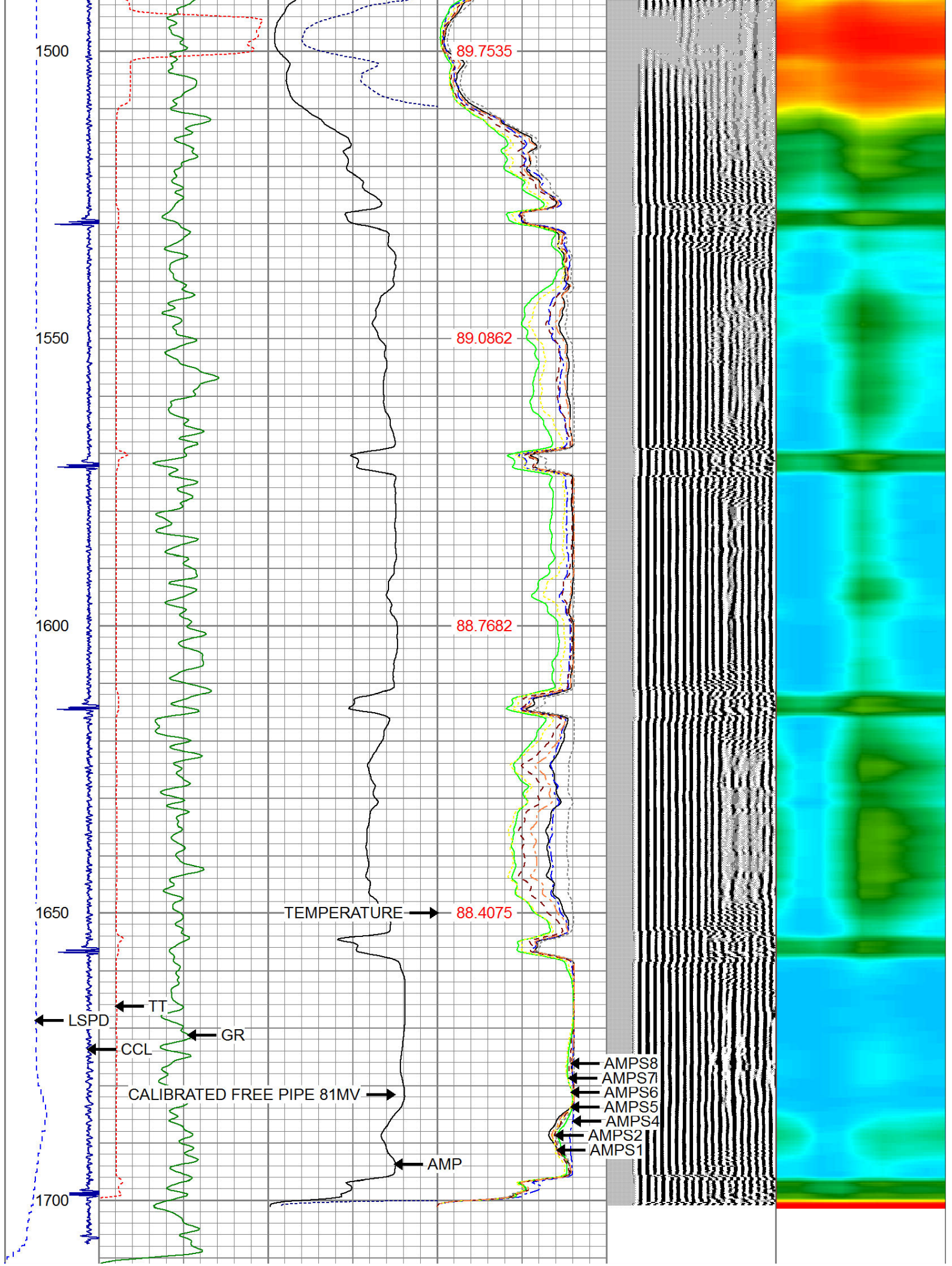
96.5253


95.7908









-9	CCL	1	200	TT (usec)	800	0	AMP (mV)	100	0	AMPS1	100	200	VDL	1200	1	Cement Map	8																			
LSPD (ft/min)	0	GR (GAPI)	200	0	AMPx5 (mV)	20	0	AMPS2	100																											
								AMPS4	100																											
	200	GR (GAPI)	400					AMPS5	100																											
								AMPS6	100																											
	0	250						AMPS7	100																											
								AMPS8	100																											
																		IntTemp (degF)																		

Database File:		peaks 33-2.db		Calibration Report			
Dataset Pathname:		pass3					
Dataset Creation:		Fri Aug 14 07:28:16 2015 by Log Std Casedhole 09061					
Gamma Ray Calibration Report							
Serial Number:		275					
Tool Model:		Probe					
Performed:		Wed Nov 06 11:09:15 2013					
Calibrator Value:		100.0		GAPI			
Background Reading:		35.0		cps			
Calibrator Reading:		160.0		cps			
Sensitivity:		0.9000		GAPI/cps			
Compensated Neutron Calibration Report							
Serial Number:		275					
Tool Model:		Probe_B					
CALIBRATION		Wed Jul 30 08:47:19 2008					
Detector		Readings		Target		Normalization	
Short Space		5001.20	cps	0.00	cps	1.0000	
Long Space		1029.31	cps	0.00	cps	1.0000	
PRE-SURVEY VERIFICATION							
Detector		Readings		Measured		Target	
1)	Short Space	cps					
	Long Space	cps		pu		pu	
2)	Short Space	cps					
	Long Space	cps		pu			
3)	Short Space	cps					
	Long Space	cps		pu			
POST-SURVEY VERIFICATION							
Detector		Readings		Measured		Target	
1)	Short Space	cps					
	Long Space	cps		pu		pu	
2)	Short Space	cps					
	Long Space	cps		pu		pu	
3)	Short Space	cps					
	Long Space	cps		pu		pu	

3) Short Space cps pu
Long Space cps pu

Segmented Cement Bond Log Calibration Report

Serial Number: Base
Tool Model: Probe

Calibration Casing Diameter: 4.500 in
Calibration Depth: 1675.267 ft

Master Calibration, performed Fri Aug 14 07:27:43 2015:

	Raw (v)		Calibrated (mv)		Results	
	Zero	Cal	Zero	Cal	Gain	Offset
3'	0.003	2.500	1.500	81.196	31.923	1.389
CAL	1.039	2.500				
5'	0.004	2.495	1.500	81.196	31.988	1.377
SUM						
S1	0.002	2.500	0.500	81.000	32.230	0.424
S2	0.006	2.500	0.500	81.000	32.272	0.321
S3	0.004	2.500	0.500	81.000	32.257	0.358
S4	0.004	2.478	0.500	81.000	32.542	0.355
S5	0.005	2.435	0.500	81.000	33.131	0.324
S6	0.006	2.431	0.500	81.000	33.196	0.312
S7	0.006	2.500	0.500	81.000	32.280	0.301
S8	0.004	2.500	0.500	81.000	32.256	0.360

Internal Reference Calibration, performed Tue Jun 05 07:53:42 2012:

	Raw (v)		Calibrated (v)		Results	
	Zero	Cal	Zero	Cal	Gain	Offset
CAL	0.000	0.000	1.039	2.500	1.000	0.000

Air Zero Calibration, performed Fri Aug 14 07:17:28 2015:

	Raw (v)		Calibrated (v)		Results	
	Zero		Zero		Offset	
3'	0.000		0.000		0.000	
5'	0.000		0.000		0.000	
SUM						
S1	0.000		0.000		0.000	
S2	0.000		0.000		0.000	
S3	0.000		0.000		0.000	
S4	0.000		0.000		0.000	
S5	0.000		0.000		0.000	
S6	0.000		0.000		0.000	
S7	0.000		0.000		0.000	
S8	0.000		0.000		0.000	



WARRIOR
ENERGY SERVICES

Company Kerr McGee Oil & Gas

Well PEAKS 33-2

Field Wattenberg

County Weld

State CO