



SUPERIOR
Black Lick, Pa.
Mercer, Pa.
Wooster, Oh.
Cleveland, Ok.
Trinidad, Co.

CEMENT BOND LOG

Company Pioneer Natural Resources
Well Blossom 33-8
Field Purgatoire River
County Las Animas
State CO

Company Pioneer Natural Resources
Well Blossom 33-8
Field Purgatoire River
County Las Animas State CO

Location: API #: 05 071 09311 00
2245' FSL & 1842' FEL
SEC 8 TWP 34S RGE 64W
Permanent Datum Ground Level Elevation 6928'
Log Measured From Kelly Bushing 4' above G.L.
Drilling Measured From Kelly Bushing
Other Services
Temp./
Devi.
Elevation
K.B. 6932'
D.F. -----
G.L. 6928'

Date				7-23-07			
Run Number				One			
Depth Driller				1000'			
Depth Logger				983'			
Bottom Logged Interval				981'			
Top Log Interval				Surface			
Open Hole Size				7 7/8"			
Type Fluid				Water			
Density / Viscosity				///			
Max. Recorded Temp.				98F			
Estimated Cement Top				Surface			
Time Well Ready				Portable Mast			
Time Logger on Bottom				9:00AM			
Equipment Number				T0698			
Location				Trinidad			
Recorded By				J. Sineros			
Witnessed By							

<<< Fold Here >>>

All interpretations are opinions based on inferences from electrical or other measurements and we cannot and do not guarantee the accuracy or correctness of any interpretation, and we shall not, except in the case of gross or willful negligence on our part, be liable or responsible for any loss, costs, damages, or expenses incurred or sustained by anyone resulting from any interpretation made by any of our officers, agents or employees. These interpretations are also subject to our general terms and conditions set out in our current Price Schedule.

Comments

Longs Canyon, to left at chips Disposal, first left just across creek, through gates (0000),
At Y turn right, secound left (turn towards Angel location), At Y turn right, stay to left, at next Y turn left,
first right to location.

2 DEG. DEVI @ TD.



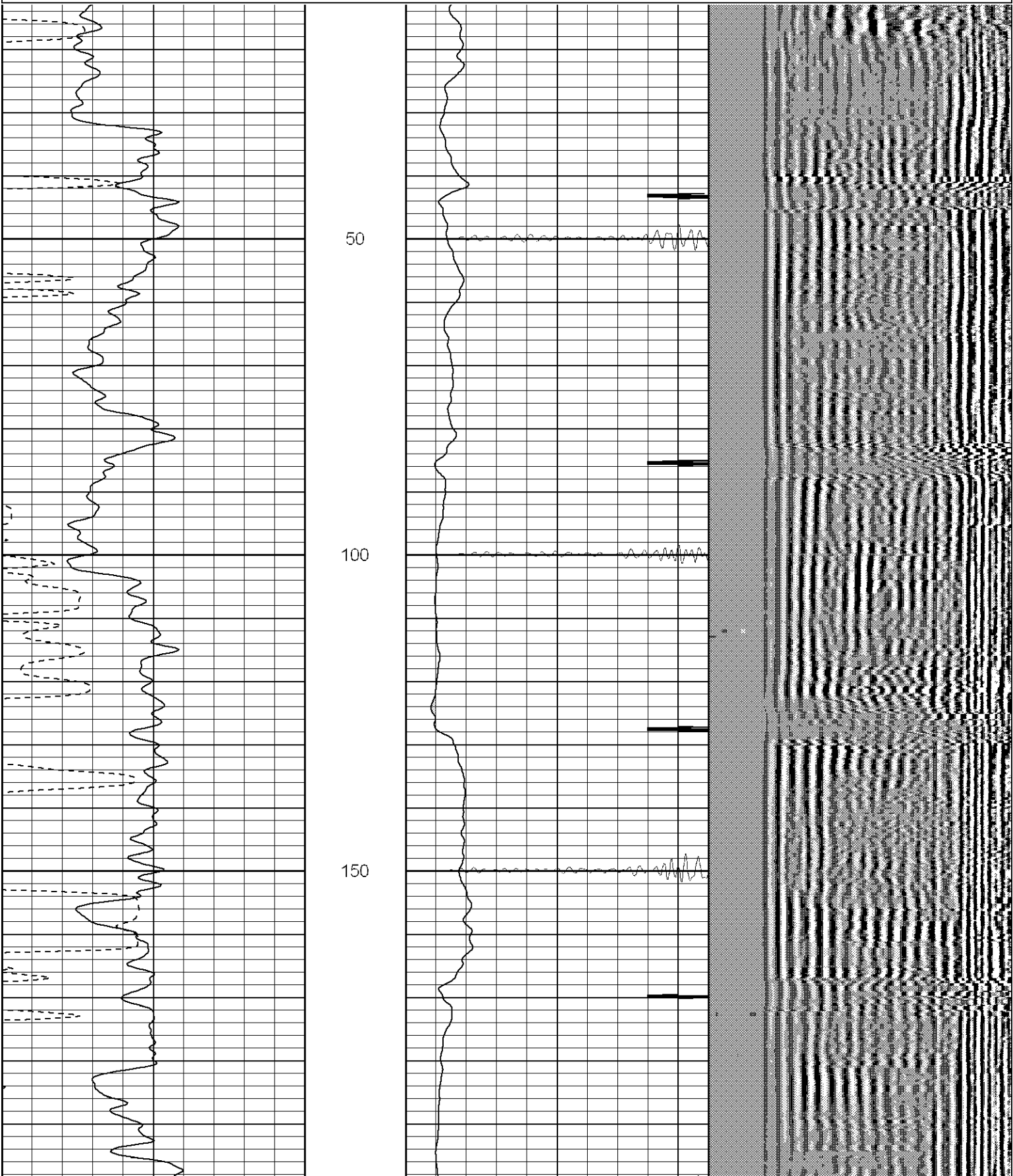
SUPERIOR

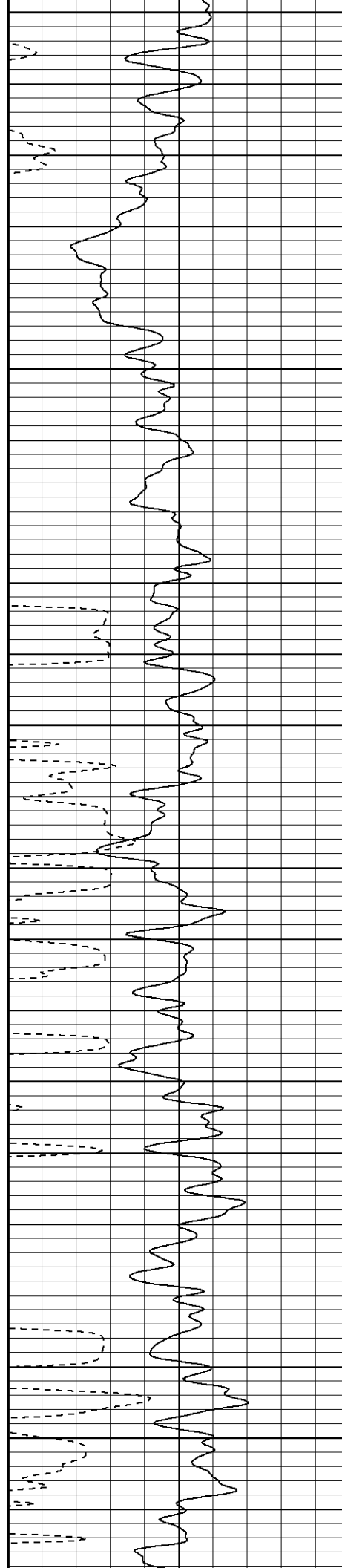
Black Lick, Pa.
Mercer, Pa.
Wooster, Oh.
Cleveland, Ok.
Trinidad, Co.

Main Pass

Database File: blossom72307b.db
Dataset Pathname: pass2.3
Presentation Format: cblrt
Dataset Creation: Mon Jul 23 14:14:01 2007
Charted by: Depth in Feet scaled 1:240

0	GR (GAPI)	200	0	AMP3 (mV)	100	200	Variable Density	1200
400	TT3 (usec)	200	18	CCL	-2			
			200	CBL5	1200			





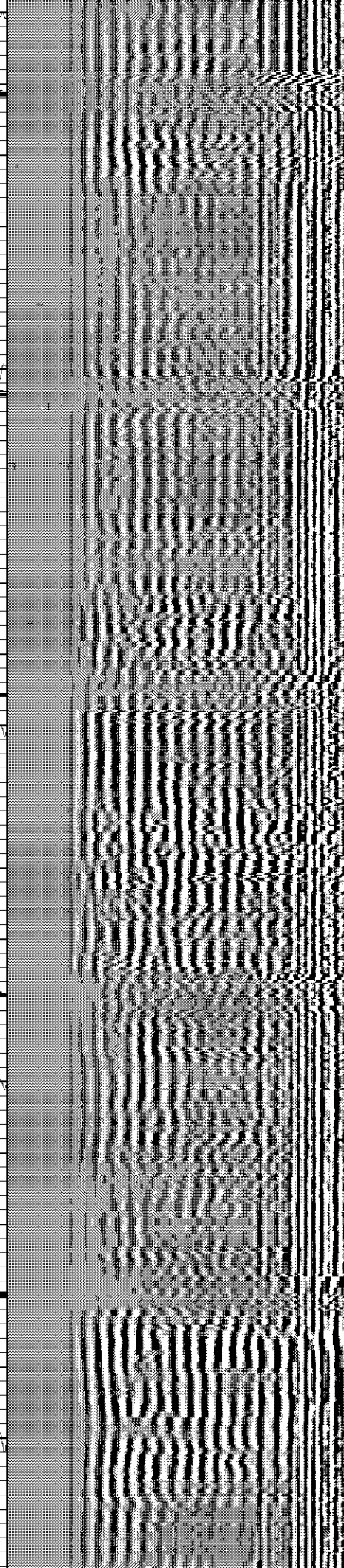
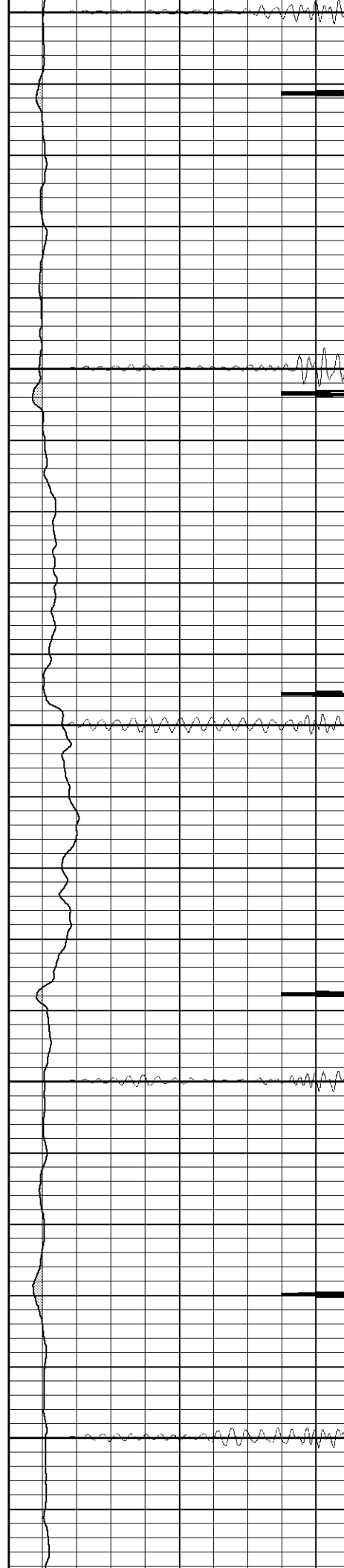
200

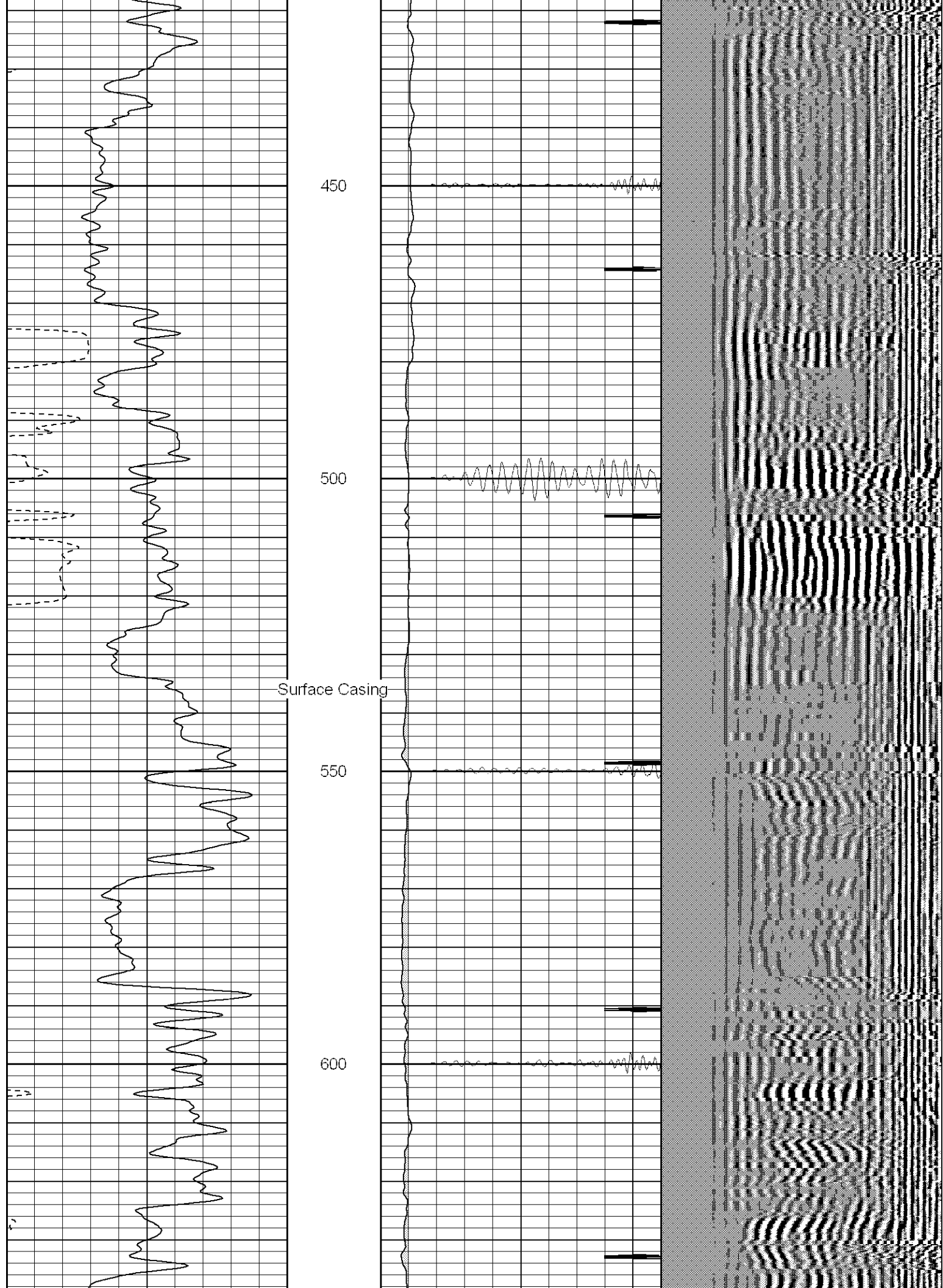
250

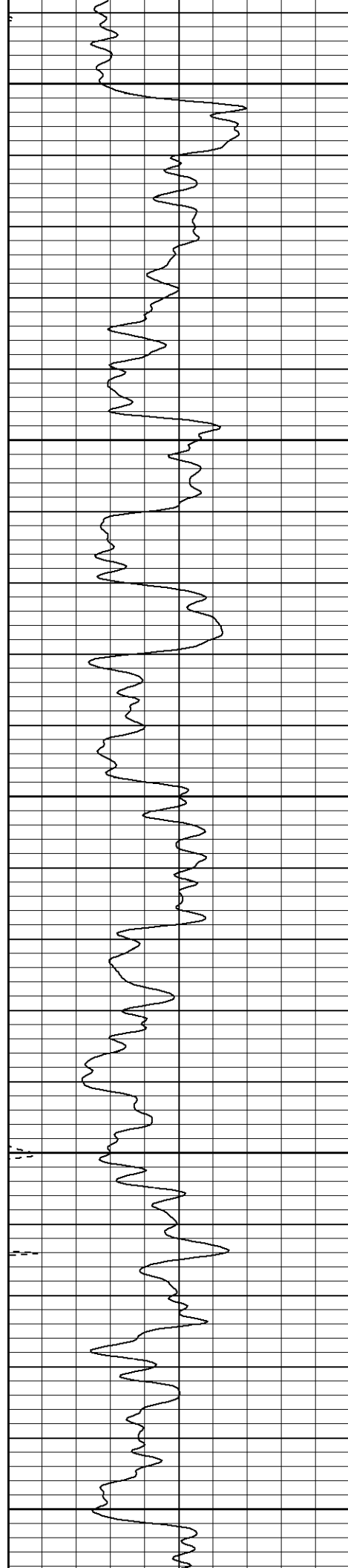
300

350

400







650

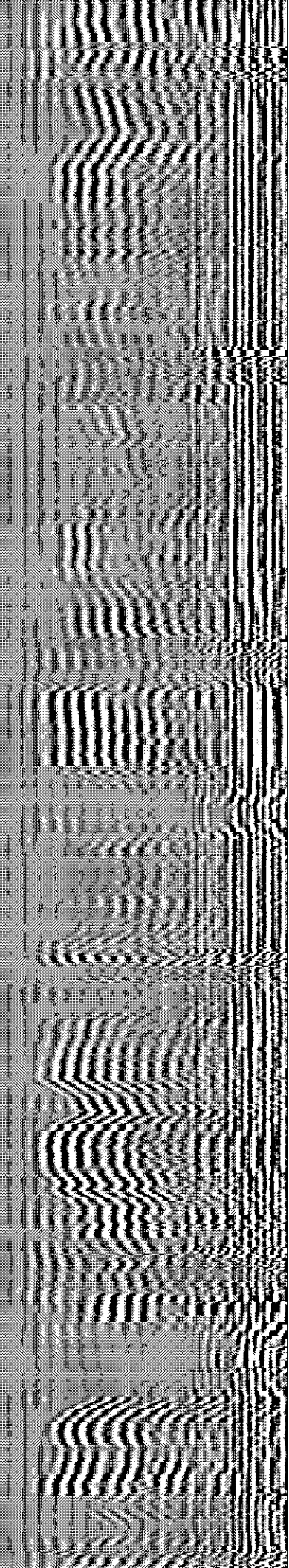
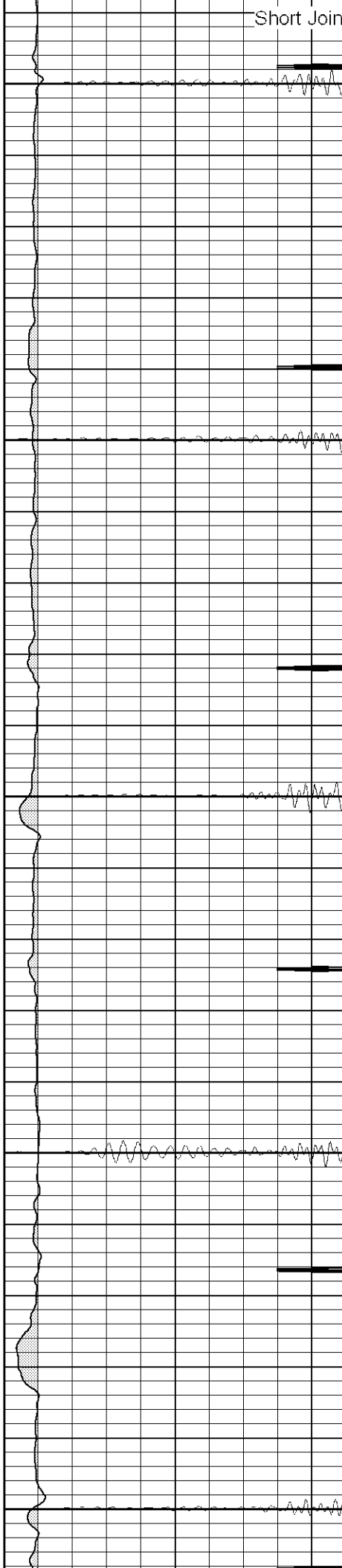
700

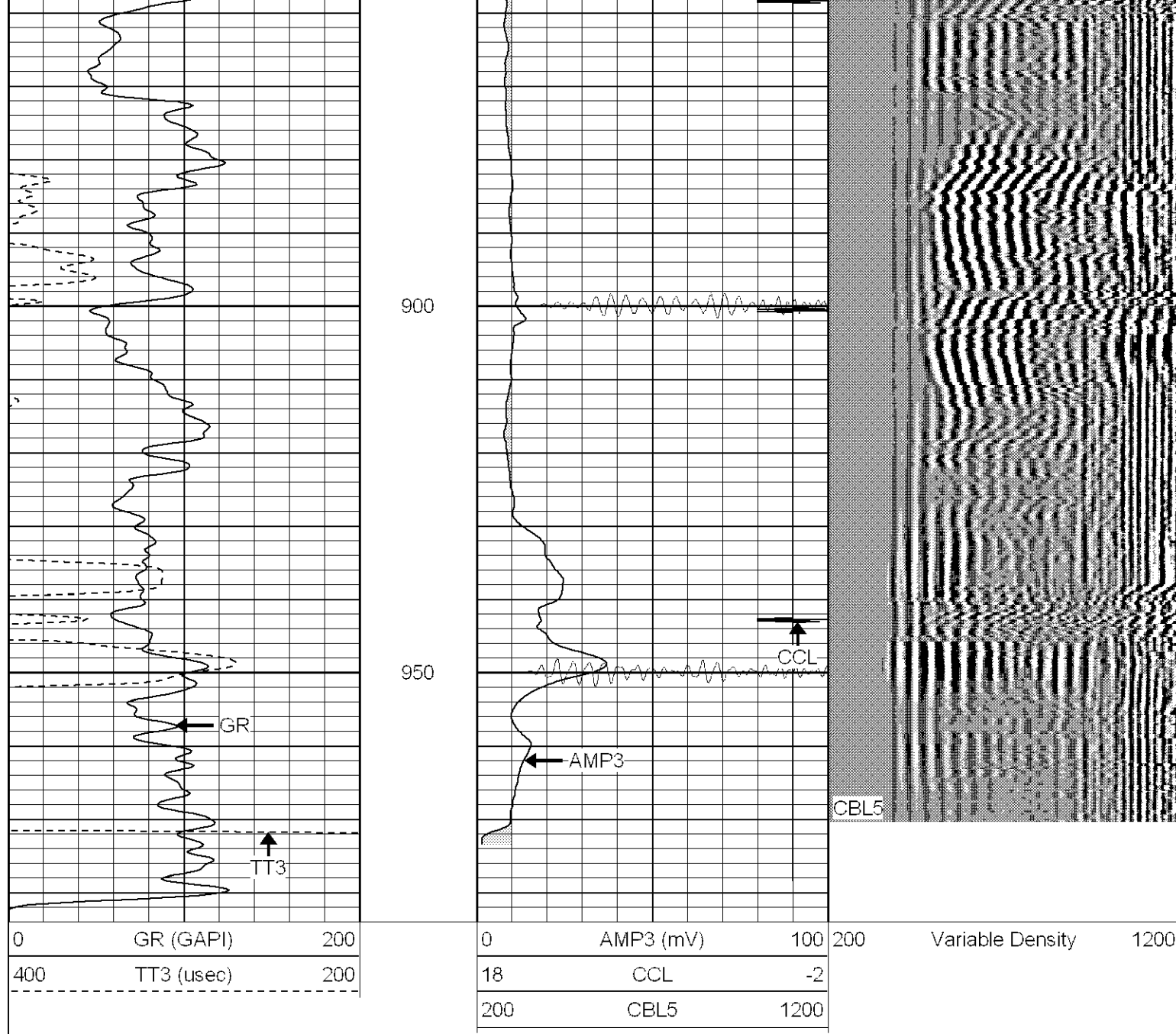
750

800

850

Short Joint



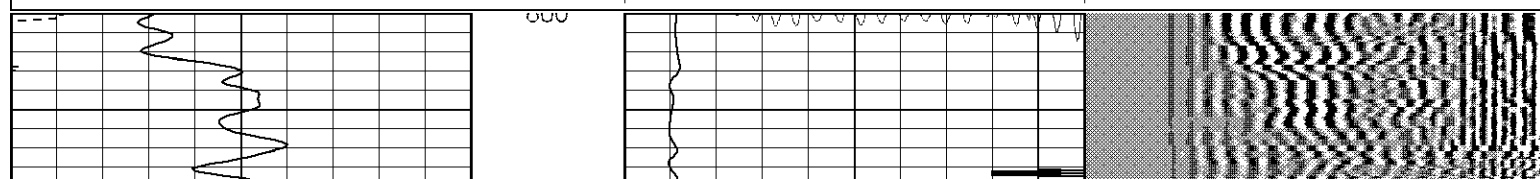
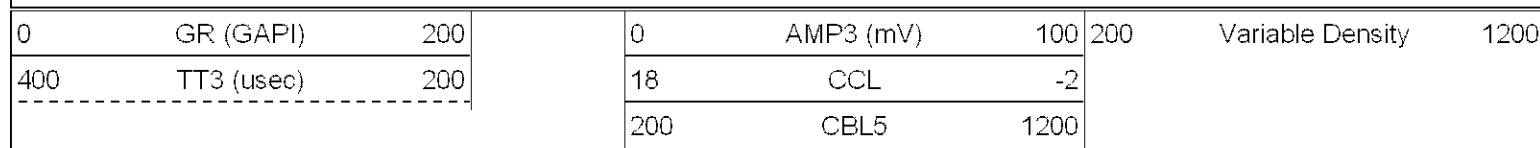


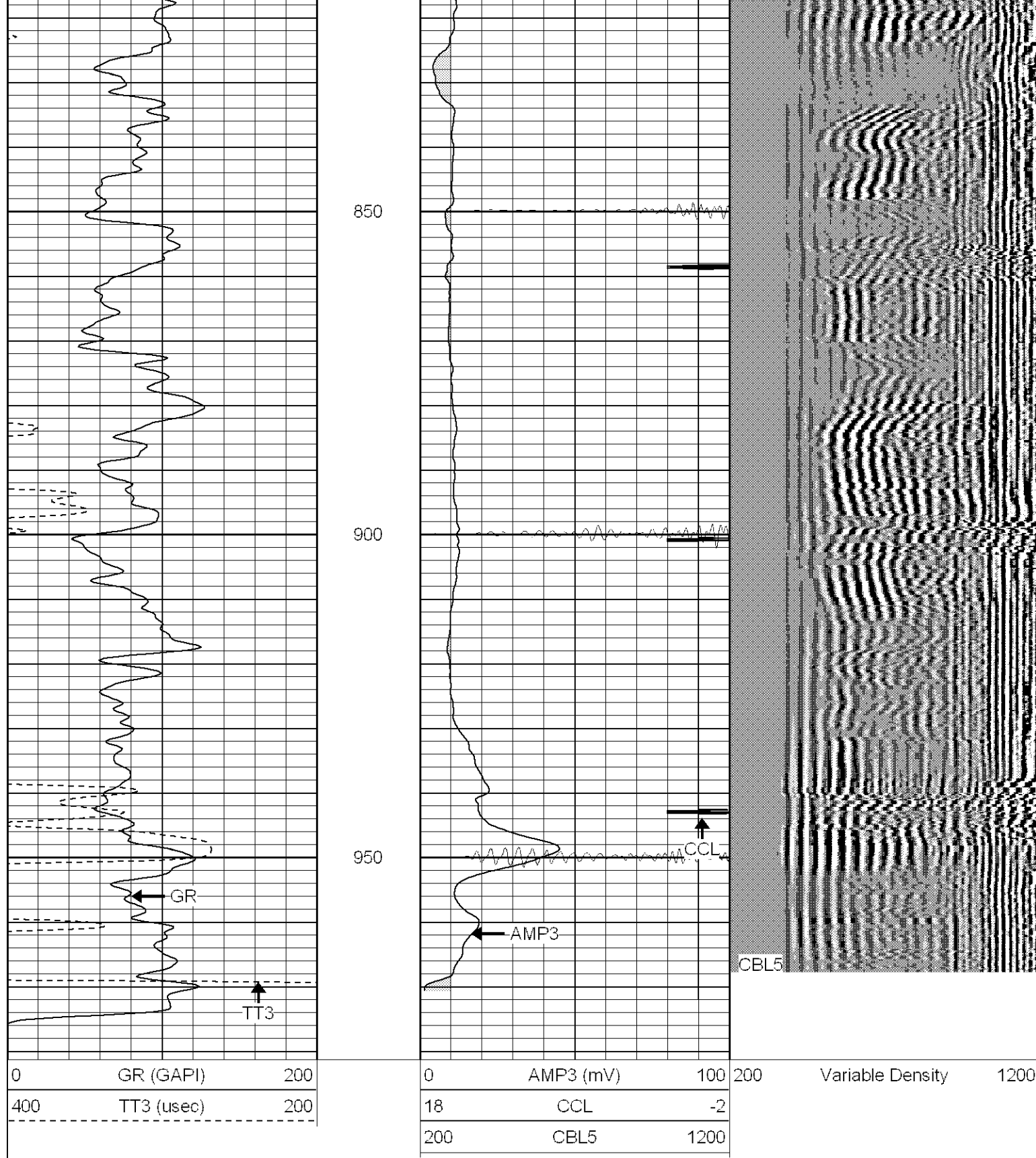
SUPERIOR

Black Lick, Pa.
Mercer, Pa.
Wooster, Oh.
Cleveland, Ok.
Trinidad, Co.

Repeat Section

Database File: blossom72307b.db
Dataset Pathname: pass1.1
Presentation Format: cblrt
Dataset Creation: Mon Jul 23 13:55:50 2007
Charted by: Depth in Feet scaled 1:240





Calibration Report

Database File: blossom72307b.db
 Dataset Pathname: pass1
 Dataset Creation: Mon Jul 23 08:59:51 2007 by Log Open-Cased 070508

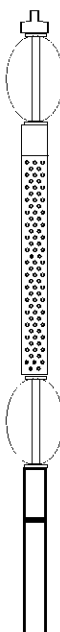
Gamma Ray Calibration Report

Serial Number: 2.75
 Tool Model: T3
 Performed: Wed Jul 11 12:58:25 2007

Calibrator Value:	1.0	GAPI
Background Reading:	0.0	cps
Calibrator Reading:	1.0	cps
Sensitivity:	1.0000	GAPI/cps

Cement Bond Log Calibration Report

Serial Number:	Titan4		
Tool Model:	T4		
Performed:	Tue Jun 26 11:32:40 2007		
Depth:	74.8132	ft	
Casing Diameter:	5.5	in	
	3' Spacing	5' Spacing	
Signal Zero:	0	0	mV
Calibrated Amplitude:	85	71.921	mV
Reading at Signal Zero:	0.0239014	0.020166	V
Reading in Free Pipe:	1.71	1.63755	V
Gain:	50.4122	44.4675	
Offset:	1.5	-0.896733	

Sensor	Offset (ft)	Schematic	Description	Len (ft)	OD (in)	Wt (lb)	
			CHD-None (0)	0.75	1.50	5.00	
			CENT-X (2)	3.00	1.69	25.00	
WVF5	12.82						
WVF3	11.82			CBL-T4 (Titan4)	8.15	2.25	110.00
				CENT-X (1)	3.00	1.69	25.00
CCL	4.27			CCL-T3 (2.75)	1.71	2.75	15.00
GR	1.42			GR-T3 (2.75)	3.77	2.75	25.00
Dataset: blossom72307b.db: field/well/run1/pass1 Total Length: 20.38 ft Total Weight: 205.00 lb O.D. 2.75 in							