

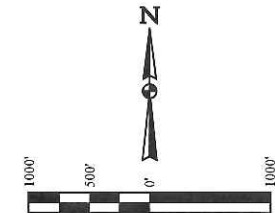
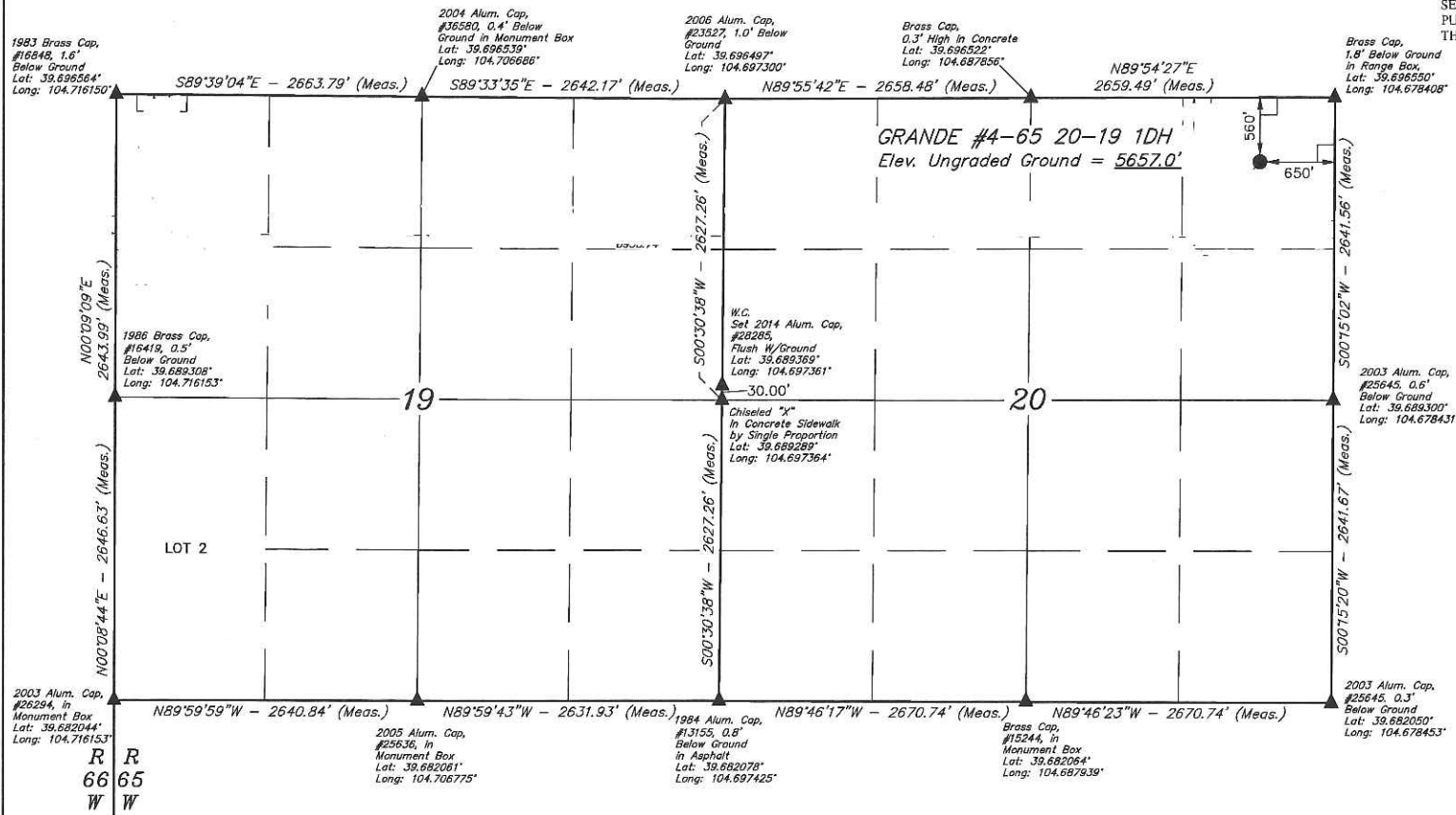
T4S, R65W, 6th P.M.

ConocoPhillips Company

GRANDE #4-65 20-19 1DH
NE 1/4 NE 1/4, SECTION 20, T4S, R65W, 6th P.M.
ARAPAHOE COUNTY, COLORADO

BASIS OF BEARINGS
BASIS OF BEARINGS IS A G.P.S. OBSERVATION
BASIS OF ELEVATION

BENCHMARK 374 LOCATED ON THE SECTION LINE BETWEEN SECTIONS 12 & 13, T5S, R64W, 6th P.M., TAKEN FROM 1988 PUBLISHED DATUM BY THE UNITED STATES DEPARTMENT OF THE INTERIOR, GEOLOGICAL SURVEY AS BEING 6054.61 FEET.





CERTIFICATE OF REGISTRATION
 THAT THE ABOVE MAP WAS PREPARED FROM FIELD
 MEASUREMENTS AND UNDER MY SUPERVISION
 IS TRUE AND CORRECT TO THE BEST OF MY
 KNOWLEDGE
 REF. 28285
 REGISTERED LAND SURVEYOR
 REGISTRATION NO. 28285
 STATE OF CALIFORNIA
 JUNE 15, 1995

THIS IS TO CERTIFY THAT THE ABOVE MAP WAS PREPARED FROM THE
NOTES OF ACTUAL SURVEYS MADE BY ME OR UNDER MY SUPERVISION
AND THAT THE SAME ARE TRUE AND CORRECT TO THE BEST OF MY
KNOWLEDGE AND BELIEF.

PDOP = 1.2

LEGEND:

 = 90° SYMBOL
 = PROPOSED WELLHEAD.

▲ = SECTION CORNERS LOCATED.

NAD 83 (SURFACE LOCATION)
LATITUDE = 39°41'42.02" (39.695006)
LONGITUDE = 104°40'50.60" (104.680722)
NAD 27 (SURFACE LOCATION)
LATITUDE = 39°41'42.07" (39.695019)
LONGITUDE = 104°40'48.70" (104.680194)
STATE PLANE NAD 83 (CO. CENTRAL)
N: 1679074.48 E: 3230544.10
STATE PLANE NAD 27 (CO. CENTRAL)
N: 167066.79 E: 2230697.90

UINTAH
ENGINEERING & LAND SURVEYING

UELS, LLC
Corporate Office * 85 South 200 East
Vernal, UT 84078 * (435) 780-1017

SURVEYED BY: DALLAS NIELSEN, C.M.		DATE: 04-23-15
DRAWN BY: J.S.		DATE DRAWN: 05-18-15
SCALE: 1" = 1000'		REVISED: 00-00-00

WELL LOCATION PLAT