

1801 Broadway
Suite 500
Denver, Colorado 80202



Allison Linz
Regulatory Technician
Tel: 303.398.0355
E-mail: alinz@gwogco.com

August 11, 2015

Colorado Oil and Gas Conservation Commission
1120 Lincoln Street, Suite 801
Denver, Colorado 80203

RE: **Proposed Wellbore Spacing Unit**
Leffler FE 20-062HN

Niobrara New Drill
Township 6 North, Range 66 West, 6th P.M.
NENE Section 21
Weld County, Colorado

Dear Director:

Great Western Operating Company, LLC is planning to drill the above captioned well in accordance with the provisions of COGCC Rule 318A.e.

Great Western proposed wellbore spacing unit consists of:

- **N2 Sec 20, N2 Sec 21**
- **640 Acres**

The 30 day notification time period has passed and we have not received any objections to such well locations or proposed spacing unit, therefore Great Western hereby requests the Director to approve the above mentioned well. Great Western Operating Company, LLC respectfully requests that the COGCC review the enclosed map illustrating the proposed wellbore spacing unit.

Respectfully,

Allison Linz

Allison Linz
Regulatory Technician
Great Western Operating Company, LLC

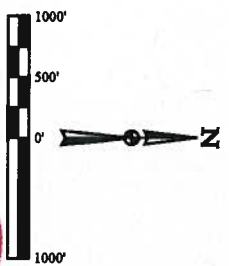
76N, R66W, 6th P.M.

GREAT WESTERN OIL & GAS COMPANY

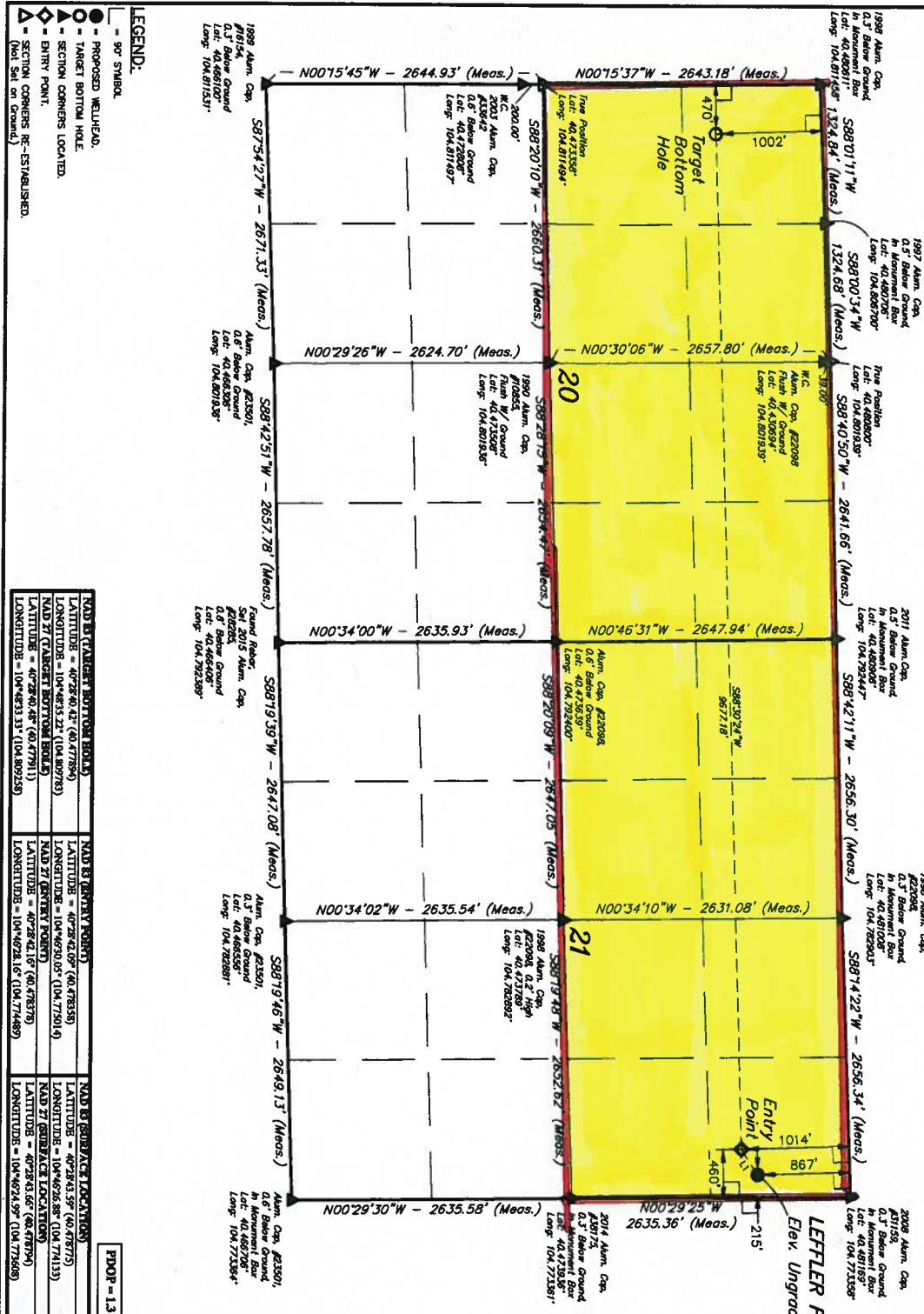
LEFT FLER FE 20-062HN
NE 1/4 NE 14, SECTION 21, T6N, R66W, 6th P.M.
WELD COUNTY, COLORADO

BAIS OF BEARINGS
BAIS OF ELEVATION
USGS COOPERATIVE BASE NETWORK CONTROL STATION,
DESIGNATION "VERMILYEA" NGS DATA SHEET LISTS THE
NAVD 88 ELEVATION AS BEING 5026 FEET.

LINE TABLE	
LINE	DIRECTION LENGTH
L1	S87°37'07"W 208.47'



CERTIFICATE AND RECORD
THIS IS TO CERTIFY THAT THE ABOVE DESCRIBED LAND IS THE PROPERTY OF THE GREAT WESTERN OIL & GAS COMPANY, INC. AND THAT THE SAME IS BEING OFFERED FOR SALE TO THE PUBLIC AT A PUBLIC AUCTION TO BE HELD AT THE COURT HOUSE IN THE CITY OF DENVER, COLORADO, ON THE 15TH DAY OF MAY, 2011, AT 10:00 A.M. LOCAL TIME.
WITNESSED AND BELIEVED
RECORDED AND RETURNED
STATE OF COLORADO
COUNTY OF WELD
JUL 11 2011



NAD 83 (TARGET) BOTTOM HOLE	
LATITUDE = 40°28'40.42" (40.47789)	LATITUDE = 40°28'42.09" (40.47838)
LONGITUDE = 104°46'55.12" (104.78278)	LONGITUDE = 104°46'55.05" (104.77504)
NAD 83 (ENTRY POINT)	
LATITUDE = 40°28'40.42" (40.47789)	LATITUDE = 40°28'42.16" (40.47878)
LONGITUDE = 104°46'55.12" (104.78278)	LONGITUDE = 104°46'52.16" (104.77488)
NAD 83 (SURFACE LOCATION)	
LATITUDE = 40°28'40.42" (40.47789)	LATITUDE = 40°28'43.59" (40.47875)
LONGITUDE = 104°46'55.12" (104.78278)	LONGITUDE = 104°46'52.88" (104.77413)
NAD 83 (SURFACE LOCATION)	
LATITUDE = 40°28'40.42" (40.47789)	LATITUDE = 40°28'43.66" (40.47879)
LONGITUDE = 104°46'55.12" (104.78278)	LONGITUDE = 104°46'52.99" (104.77508)

UNITAH
SURVEYED BY: DALLAS WHEELER, B.C.
DRAWN BY: K.B.
SCALE: 1" = 100'
DATE: 04-21-15
DATE DRAWN: 04-23-15
REVISOR: 00-00-00
WELL LOCATION PLAT

UTLS, LLC
Corporate Office: 65 South 200 East
Vernal, UT 84078 • (435) 789-1017

- LEGEND:**
- 90° SYMBOL
 - PROPOSED WELLHEAD
 - TARGET BOTTOM HOLE
 - SECTION CORNERS LOCATED
 - ENTRY POINT
 - SECTION CORNERS RE-ESTABLISHED (Not Set on Ground)