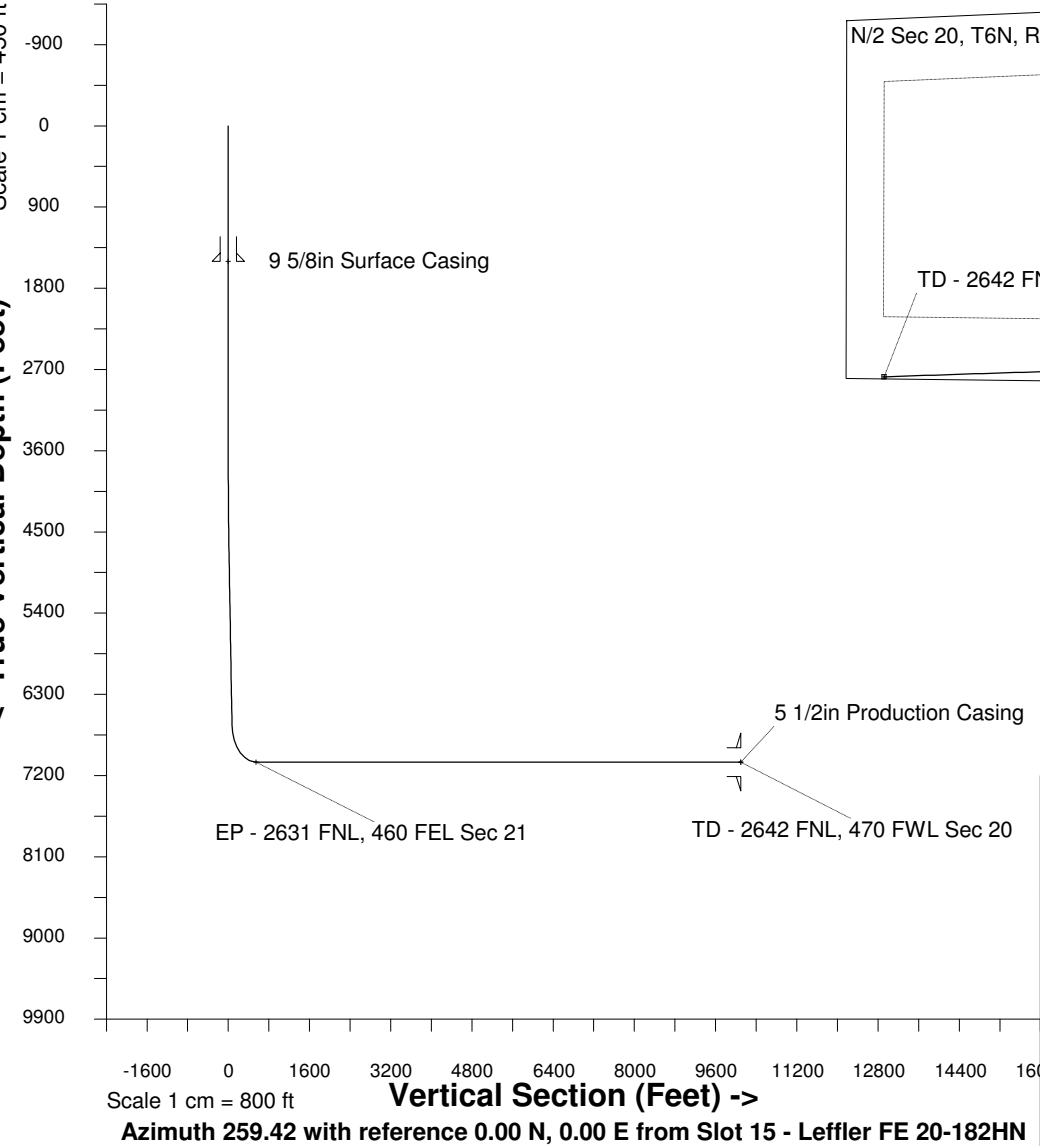


18-May-2015
IGRF Model [1900.0-2020.0] Dip: 66.97 deg Field: 52672.1 nT
Lat: N40 28 44.6304 Long: W104 46 26.8788 Elev: 4750.80 ft
Magnetic North is 8.44 deg East of TRUE North
To correct azimuth from Magnetic to TRUE add 8.44 deg

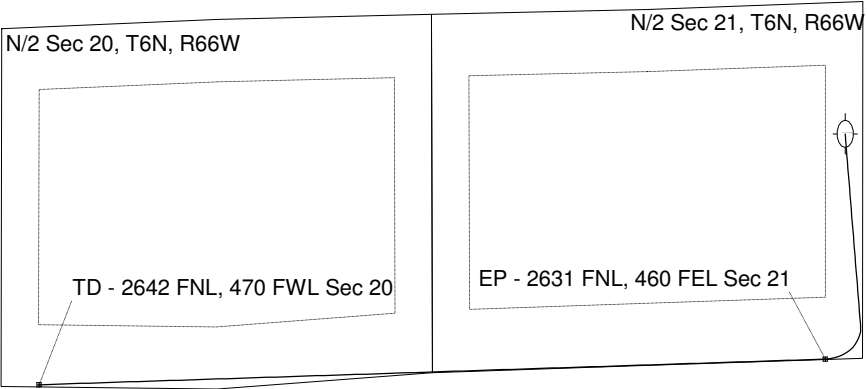


Great Western Operating Company, LLC					
Location	Colorado	Slot	Slot 15 - Leffler FE 20-182HN		
Field	Wattenberg	Well	Leffler FE 20-182HN		
Installation	Leffler	Wellbore	Leffler FE 20-182HN (PWB)		

Scale 1 cm = 500 ft

East (Feet) ->

-11000 -10000 -9000 -8000 -7000 -6000 -5000 -4000 -3000 -2000 -1000 0 1000 2000



WELL PROFILE DATA								
Point	MD	Inc	Azi	TVD	North	East	deg/100ft	V. Sect
Tie on	0.00	0.00	0.00	0.00	S 0.00	W 0.00		-0.00
KOP	3700.00	0.00	172.37	3700.00	S 0.00	W 0.00	0.00	-0.00
End of Build	4718.82	30.56	172.37	4671.19	S 263.02	E 35.23	9.84	13.66
End of Hold	7014.58	30.56	172.37	6647.96	S 1420.10	E 190.20	0.00	73.78
Target EP - 2...Sec 21	7732.31	90.00	268.88	7050.00	S 1664.56	W 245.11	42.65	546.57
T.D. & Target TD ... 20	17413.96	90.00	268.88	7050.00	S 1853.83	W 9924.91	0.00	10096.56