

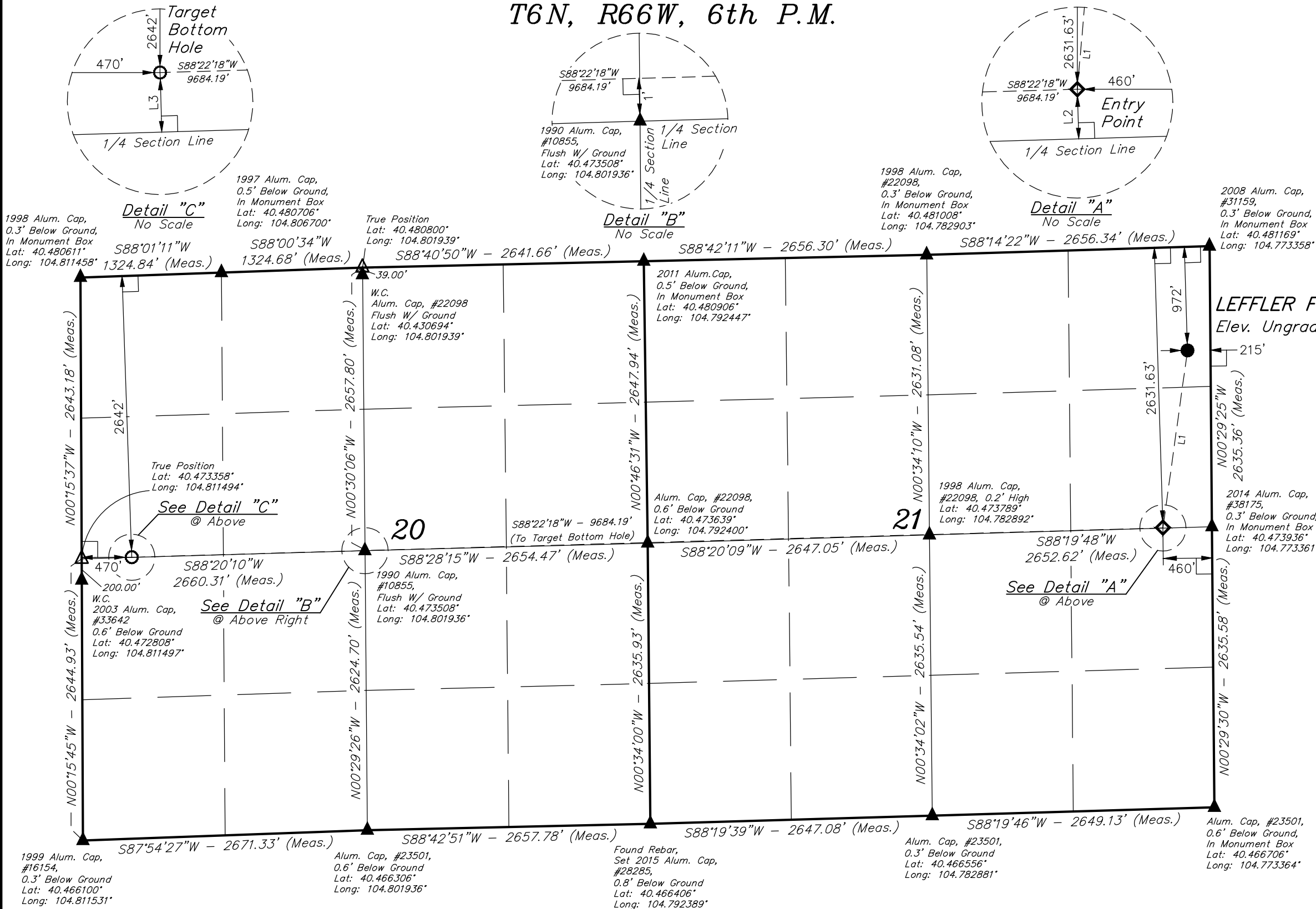
T6N, R66W, 6th P.M.

GREAT WESTERN OIL & GAS COMPANY

LEFFLER FE 20-182HN
NE 1/4 NE 1/4, SECTION 21, T6N, R66W, 6th P.M.
WELD COUNTY, COLORADO

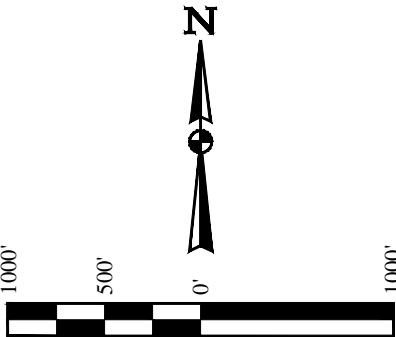
BASIS OF BEARINGS
BASIS OF ELEVATION

USGS COOPERATIVE BASE NETWORK CONTROL STATION,
DESIGNATION "VERMILYEA". NGS DATA SHEET LISTS THE
NAVD 88 ELEVATION AS BEING 5026 FEET.



LEFFLER FE 20-182HN
Elev. Ungraded Ground = 4751.0'

LINE TABLE		
LINE	DIRECTION	LENGTH
L1	S07°52'41"W	1683.30'
L2	S01°40'12"E	2.36'
L3	S01°39'50"E	2.36'



CERTIFICATE

THIS IS TO CERTIFY THAT THE ABOVE PLAT WAS PREPARED FROM FIELD
NOTES OF ACTUAL SURVEYS MADE BY ME OR UNDER MY SUPERVISION
AND THAT THE SAME ARE TRUE AND CORRECT TO THE BEST OF MY
KNOWLEDGE AND BELIEF.

REGISTERED LAND SURVEYOR
REGISTRATION NO. 28285
STATE OF COLORADO

LEGEND:

- 90° SYMBOL
- PROPOSED WELLHEAD.
- TARGET BOTTOM HOLE.
- SECTION CORNERS LOCATED.
- ENTRY POINT.
- SECTION CORNERS RE-ESTABLISHED.
(Not Set on Ground.)

PDOP = 1.2

NAD 83 (TARGET BOTTOM HOLE)	NAD 83 (ENTRY POINT)	NAD 83 (SURFACE LOCATION)
LATITUDE = 40°28'24.21" (40.473392)	LATITUDE = 40°28'26.10" (40.473917)	LATITUDE = 40°28'42.55" (40.478486)
LONGITUDE = 104°48'35.30" (104.809806)	LONGITUDE = 104°46'30.05" (104.775014)	LONGITUDE = 104°46'26.88" (104.774133)
NAD 27 (TARGET BOTTOM HOLE)	NAD 27 (ENTRY POINT)	NAD 27 (SURFACE LOCATION)
LATITUDE = 40°28'24.27" (40.473408)	LATITUDE = 40°28'26.17" (40.473936)	LATITUDE = 40°28'42.62" (40.478506)
LONGITUDE = 104°48'33.41" (104.809281)	LONGITUDE = 104°46'28.17" (104.774492)	LONGITUDE = 104°46'24.99" (104.773608)



UELS, LLC
Corporate Office * 85 South 200 East
Vernal, UT 84078 * (435) 789-1017

SURVEYED BY: DALLAS NIELSEN, B.C.	DATE: 04-21-15
DRAWN BY: K.B.	DATE DRAWN: 04-23-15
SCALE: 1" = 1000'	REVISED: 00-00-00

WELL LOCATION PLAT