

1801 Broadway
Suite 500
Denver, Colorado 80202



Allison Linz
Regulatory Technician
Tel: 303.398.0355
E-mail: alinz@gwogco.com

August 11, 2015

Colorado Oil and Gas Conservation Commission
1120 Lincoln Street, Suite 801
Denver, Colorado 80203

RE: **Proposed Wellbore Spacing Unit**
Leffler FE 20-062HC

Codell New Drill
Township 6 North, Range 66 West, 6th P.M.
NENE Section 21
Weld County, Colorado

Dear Director:

Great Western Operating Company, LLC is planning to drill the above captioned well in accordance with the provisions of COGCC Rule 318A.e.

Great Western proposed wellbore spacing unit consists of:

- **N2 Sec 20, N2 Sec 21**
- **640 Acres**

The 30 day notification time period has passed and we have not received any objections to such well locations or proposed spacing unit, therefore Great Western hereby requests the Director to approve the above mentioned well. Great Western Operating Company, LLC respectfully requests that the COGCC review the enclosed map illustrating the proposed wellbore spacing unit.

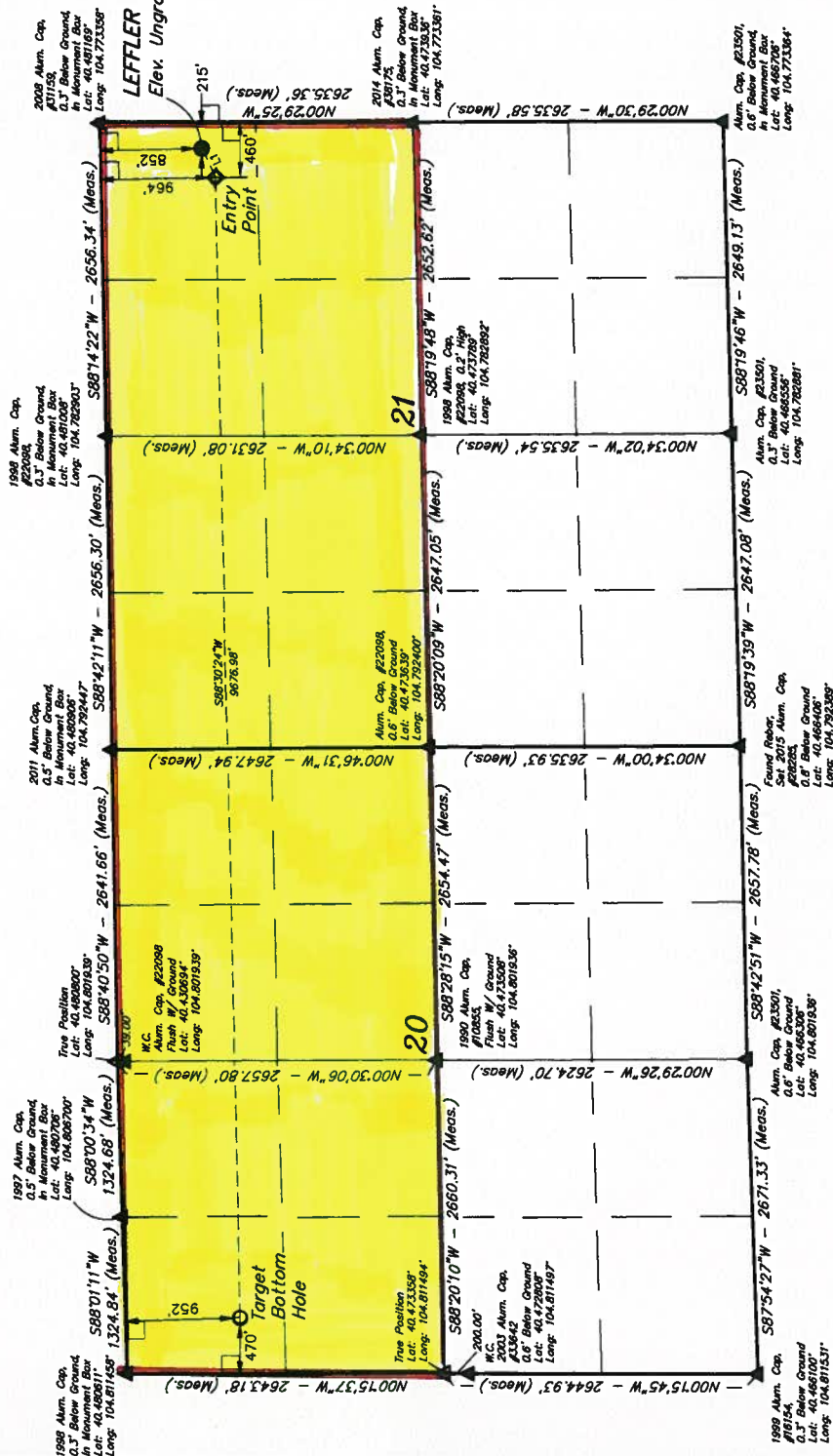
Respectfully,

Allison Linz

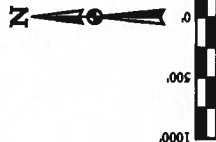
Allison Linz
Regulatory Technician
Great Western Operating Company, LLC

GREAT WESTERN OIL & GAS COMPANY
LEFFLER VE 20-062HC
NE 1/4 NE 1/4, SECTION 21, T6N, R66W, 6th P.M.
WELD COUNTY, COLORADO

BASIS OF BEARINGS
BASIS OF BEARINGS IS A G.P.S. OBSERVATION
BASIS OF ELEVATION
USGS COOPERATIVE BASE NETWORK CONTROL STATION
DESIGNATION "VERMILYEA". NGS DATA SHEET LISTS THE
NAVD 88 ELEVATION AS BEING 3026 FEET.



LINE TABLE		
LINE	DIRECTION	LENGTH
L1	S63°55'51"W	271.71'



CERTIFICATE
THIS IS TO CERTIFY THAT THE ABOVE AND FOREGOING NOTES OF ACTUAL SURVEY MADE BY ME OR UNDER MY SUPERVISION AND THAT THE SAME ARE TRUE AND CORRECT TO THE BEST OF MY KNOWLEDGE AND BELIEF.

John A. Brown
REGISTERED LAND SURVEYOR
JULIA WALTON, NO. 2225
STATE OF MISSISSIPPI

RECEIVED
NOV 15 1900
REGISTERED
MISSISSIPPI

LEGEND:

- = 90° SYMBOL.
- = PROPOSED WELLHEAD.
- = TARGET BOTTOM HOLE.
- ▲ = SECTION CORNERS LOCATED.
- ◆ = ENTRY POINT.
- = SECTION CORNERS RE-ESTABLISHED.
(Not Set on Ground.)

PDOP = 1.3

UELS, LLC
Office • 85 South 200 East
T 84078 • (435) 789-1017

NAD 83 TARGET POINT 101		NAD 83 TARGET POINT 102		NAD 83 TARGET POINT 103	
LATITUDE	-07°28'46.91" (60.479031)	LATITUDE	-07°28'46.58" (60.478660)	LATITUDE	-07°28'43.31" (60.478117)
LONGITUDE	-104°48'25.31" (104.807781)	LONGITUDE	-104°48'26.00" (104.775014)	LONGITUDE	-104°48'26.58" (104.774133)
NAD 27 TARGET POINT 104		NAD 27 TARGET POINT 105		NAD 27 TARGET POINT 106	
LATITUDE	-07°28'46.32" (60.478650)	LATITUDE	-07°28'46.55" (60.478514)	LATITUDE	-07°28'43.31" (60.478117)
LONGITUDE	-104°48'25.32" (104.807256)	LONGITUDE	-104°48'26.11" (104.774489)	LONGITUDE	-104°48'24.59" (104.772868)

NAD 83 (TARGET BOTTOM HOLE)	NAD 83 (ENTRY POINT)	NAD 83 (SURFACE LOCATION)

RAD 15 (SURFACE LOCATION)
 LATITUDE = 40°28'43.74" (40.478317)
 LONGITUDE = 104°48'25.88" (104.774133)

RAD 27 (SURFACE LOCATION)
 LATITUDE = 40°28'43.81" (40.478336)
 LONGITUDE = 104°48'24.99" (104.774088)

NAD 83 (TARGET BOTTOM HOLE)	NAD 83 (TINNY POINT)
-----------------------------	----------------------

SECTION CORNERS RE-ESTABLISHED.
(Not Set on Ground.)