

PROPOSED LOCATION:
 ANSCHUTZ STATE 5-62-26_25
 NWSW PAD #5-62-26-4841BH2,
 4841CH2, 3340BH2, 3340CH2 &
 3225BH2

LEGEND:

 **PROPOSED LOCATION**

BILL BARRETT CORPORATION

ANSCHUTZ STATE 5-62-26_25 NWSW PAD #5-62-26-4841BH2,
 4841CH2, 3340BH2, 3340CH2 & 3225BH2
 NW 1/4 SW 1/4, SECTION 26, T5N, R62W, 6th P.M.,
 WELD COUNTY, COLORADO

DRAWN BY: J.L.G.

DATE DRAWN: 06-10-14

SCALE: 1:100,000

REV: 08-17-15

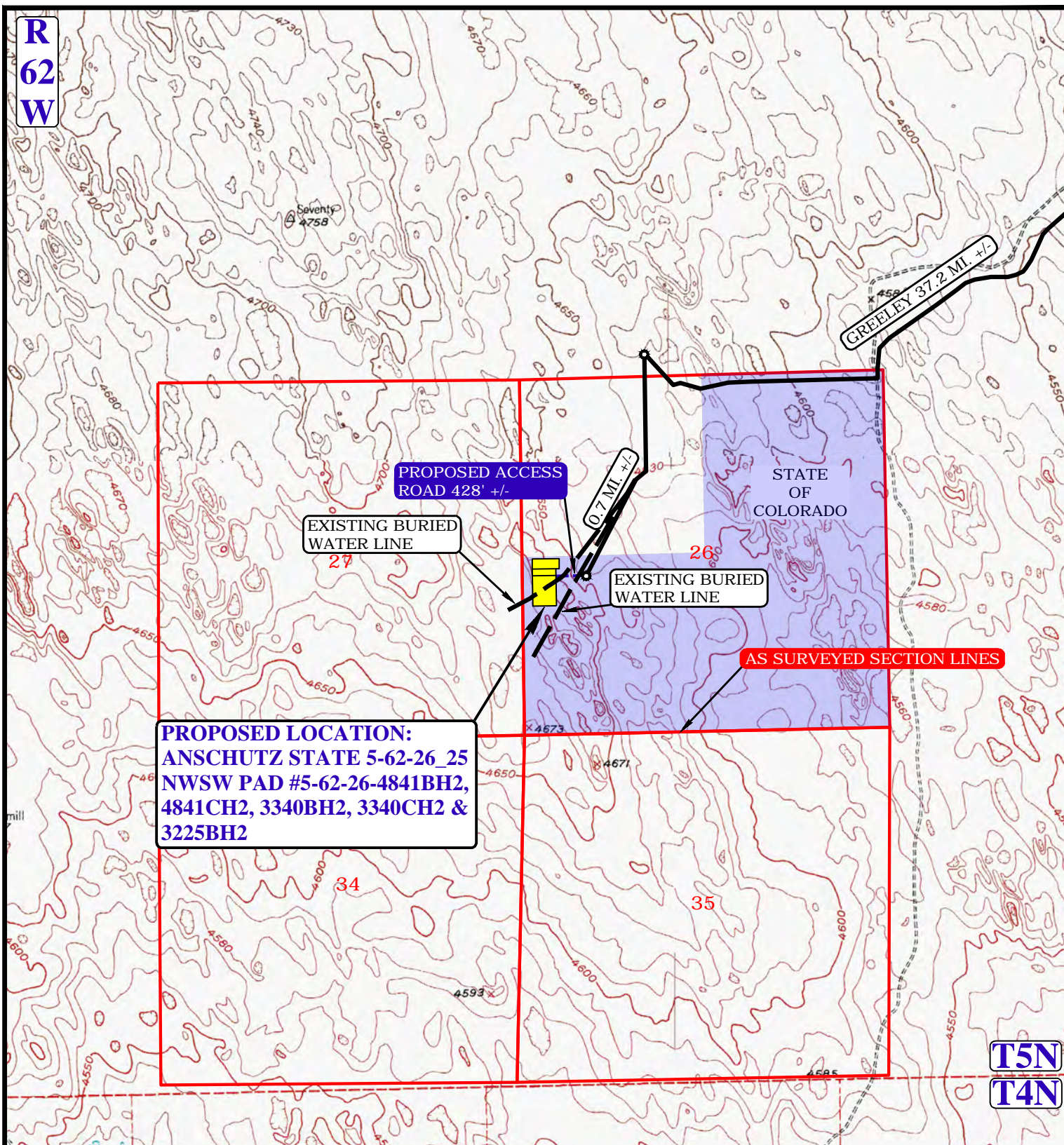
ACCESS ROAD MAP

TOPO A



UELS, LLC
 Corporate Office * 85 South 200 East
 Vernal, UT 84078 * (435) 789-1017

R
62
W



NOTE: PARCEL DATA SHOWN HAS BEEN OBTAINED FROM VARIOUS SOURCES AND SHOULD BE USED FOR MAPPING, GRAPHIC AND PLANNING PURPOSES ONLY. NO WARRANTY IS MADE BY UINTAH ENGINEERING AND LAND SURVEYING (UELS) FOR ACCURACY OF THE PARCEL DATA.

LEGEND:

- EXISTING ROAD
- PROPOSED ROAD
- EXISTING PIPELINE

BILL BARRETT CORPORATION

ANSCHUTZ STATE 5-62-26_25 NWSW PAD #5-62-26-4841BH2,
4841CH2, 3340BH2, 3340CH2 & 3225BH2
NW 1/4 SW 1/4, SECTION 26, T5N, R62W, 6th P.M.,
WELD COUNTY, COLORADO

DRAWN BY: J.L.G.

DATE DRAWN: 06-10-14

SCALE: 1"=2000'

REV: 08-17-15

ACCESS ROAD MAP

TOPO B



UELS, LLC
Corporate Office * 85 South 200 East
Vernal, UT 84078 * (435) 789-1017

PROCEED IN AN EASTERLY, THEN SOUTHEASTERLY DIRECTION FROM GREELEY, COLORADO ALONG HIGHWAY 34 APPROXIMATELY 25.4 MILES TO THE JUNCTION OF THIS ROAD AND COUNTY ROAD 87 TO THE NORTH; TURN LEFT AND PROCEED IN A NORTHERLY, THEN EASTERLY DIRECTION APPROXIMATELY 3.0 MILES TO THE JUNCTION OF THIS ROAD AND COUNTY ROAD 89 TO THE NORTH; TURN LEFT AND PROCEED IN A NORTHERLY DIRECTION APPROXIMATELY 4.7 MILES TO JUNCTION OF THIS ROAD AND AN EXISTING ROAD TO THE WEST; TURN LEFT AND PROCEED IN A WESTERLY, THEN SOUTHWESTERLY DIRECTION APPROXIMATELY 4.1 MILES TO THE JUNCTION OF THIS ROAD AND AN EXISTING ROAD TO THE SOUTH; TURN LEFT AND PROCEED IN A SOUTHERLY DIRECTION APPROXIMATELY 0.7 MILES TO THE BEGINNING OF THE PROPOSED ACCESS ROAD TO THE WEST; FOLLOW ROAD FLAGS IN A WESTERLY DIRECTION APPROXIMATELY 428' TO THE PROPOSED LOCATION.

TOTAL DISTANCE FROM GREELEY, COLORADO TO THE PROPOSED LOCATION IS APPROXIMATELY 38.0 MILES.

BILL BARRETT CORPORATION

ANSCHUTZ STATE 5-62-26_25 NWSW PAD #5-62-26-4841BH2,
4841CH2, 3340BH2, 3340CH2 & 3225BH2
NW 1/4 SW 1/4, SECTION 26, T5N, R62W, 6th P.M.,
WELD COUNTY, COLORADO



UELS, LLC
Corporate Office * 85 South 200 East
Vernal, UT 84078 * (435) 789-1017

DRAWN BY: J.L.G.	DATE DRAWN: 6-10-14
	REV: 08-17-15
ROAD DESCRIPTION	