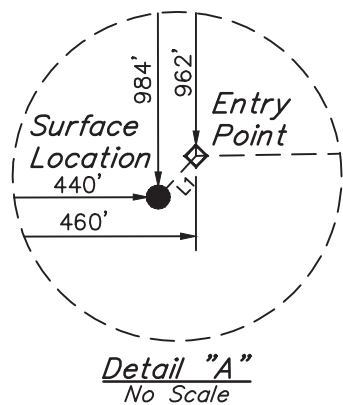


# LEGEND:

- = 90° SYMBOL
- = PROPOSED WELLHEAD.
- ◆ = ENTRY POINT.
- = TARGET BOTTOM HOLE.
- ▲ = SECTION CORNERS LOCATED.

T4N, R67W, 6th P.M.

LINE TABLE		
LINE	DIRECTION	LENGTH
L1	N42°39'18"E	29.10'



PDOP = 1.4

<b>NAD 83 (TARGET BOTTOM HOLE)</b>	
LATITUDE = 40°18'08.50" (40.302361)	
LONGITUDE = 104°52'09.43" (104.869286)	
<b>NAD 27 (TARGET BOTTOM HOLE)</b>	
LATITUDE = 40°18'08.57" (40.302381)	
LONGITUDE = 104°52'07.53" (104.868758)	
<b>NAD 83 (ENTRY POINT)</b>	
LATITUDE = 40°18'09.75" (40.302708)	
LONGITUDE = 104°53'05.02" (104.884728)	
<b>NAD 27 (ENTRY POINT)</b>	
LATITUDE = 40°18'09.82" (40.302728)	
LONGITUDE = 104°53'03.12" (104.884200)	



<b>NAD 83 (SURFACE LOCATION)</b>	
LATITUDE = 40°18'09.54" (40.302650)	
LONGITUDE = 104°53'05.28" (104.884800)	
<b>NAD 27 (SURFACE LOCATION)</b>	
LATITUDE = 40°18'09.61" (40.302669)	
LONGITUDE = 104°53'03.37" (104.884269)	

## BASIS OF BEARINGS

BASIS OF BEARINGS IS A G.P.S. OBSERVATION

## BASIS OF ELEVATION

USGS COOPERATIVE BASE NETWORK CONTROL STATION, DESIGNATION "VERMILYEA". NGS DATA SHEET LISTS THE NAVD 88 ELEVATION AS BEING 5026 FEET.



UELS, LLC

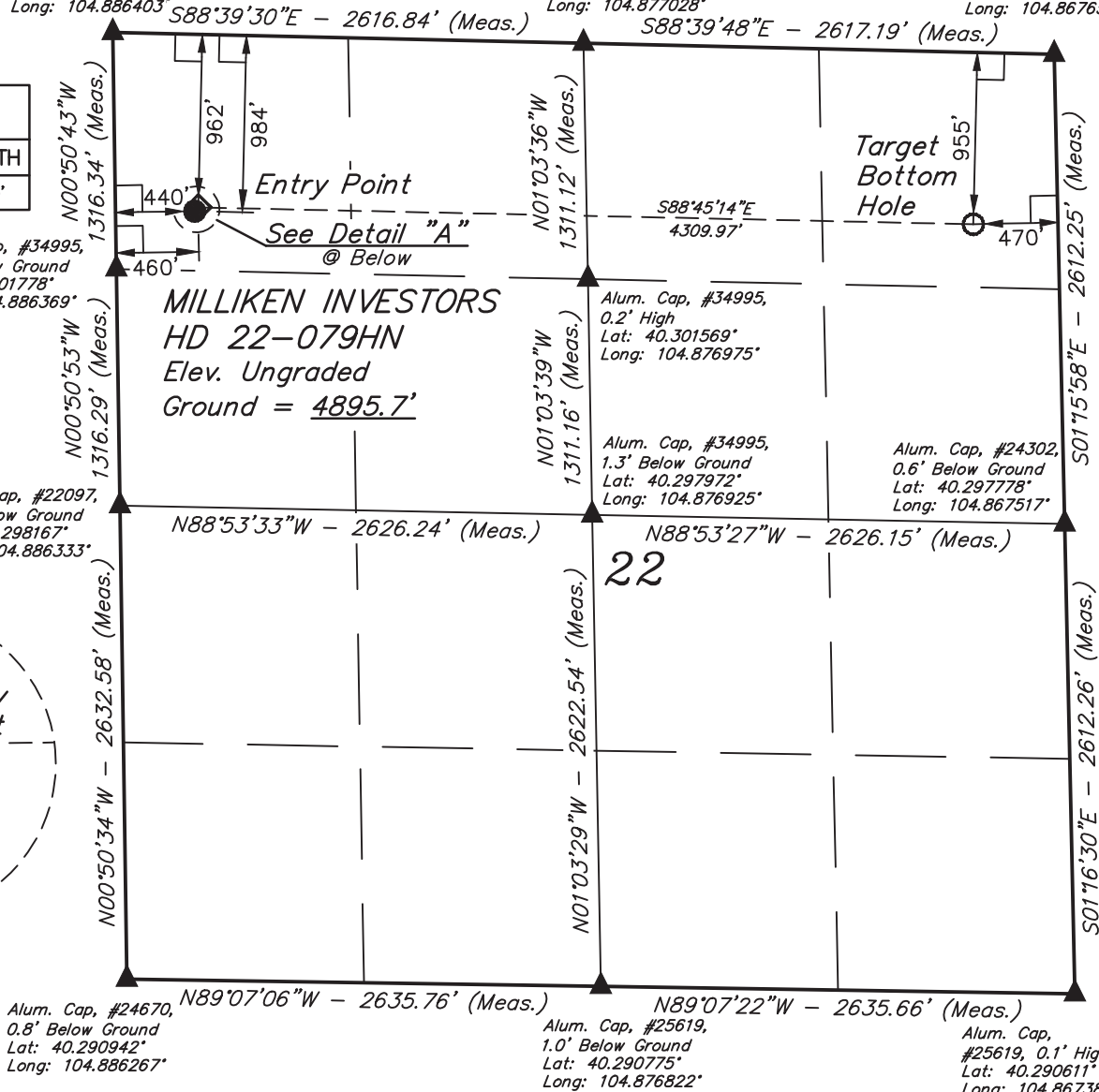
Corporate Office \* 85 South 200 East  
Vernal, UT 84078 \* (435) 789-1017



Alum. Cap, #34995,  
0.7' Below Ground  
Lat: 40.305389°  
Long: 104.886403°

Alum. Cap, #20676,  
0.8' Below Ground  
Lat: 40.305167°  
Long: 104.877028°

Alum. Cap, #4392,  
1.0' Below Ground  
Lat: 40.304944°  
Long: 104.867650°



## CERTIFICATE

THIS IS TO CERTIFY THAT THE ABOVE PLAT WAS PREPARED FROM FIELD NOTES OF ACTUAL SURVEYS MADE BY ME OR UNDER MY SUPERVISION AND THAT THE SAME ARE TRUE AND CORRECT TO THE BEST OF MY KNOWLEDGE AND BELIEF.



## GREAT WESTERN OIL & GAS COMPANY

MILLIKEN INVESTORS HD 22-079HN  
NW 1/4 NW 1/4, SECTION 22, T4N, R67W, 6th P.M.  
WELD COUNTY, COLORADO

SURVEYED BY: DALLAS NIELSEN, J.S.	DATE: 11-13-14
DRAWN BY: J.W.	DATE DRAWN: 11-19-14
SCALE: 1" = 1000'	REVISED: 00-00-00

WELL LOCATION PLAT