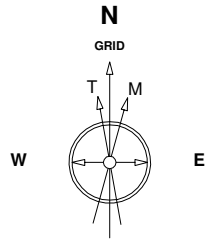


Great Western Operating Company, LLC

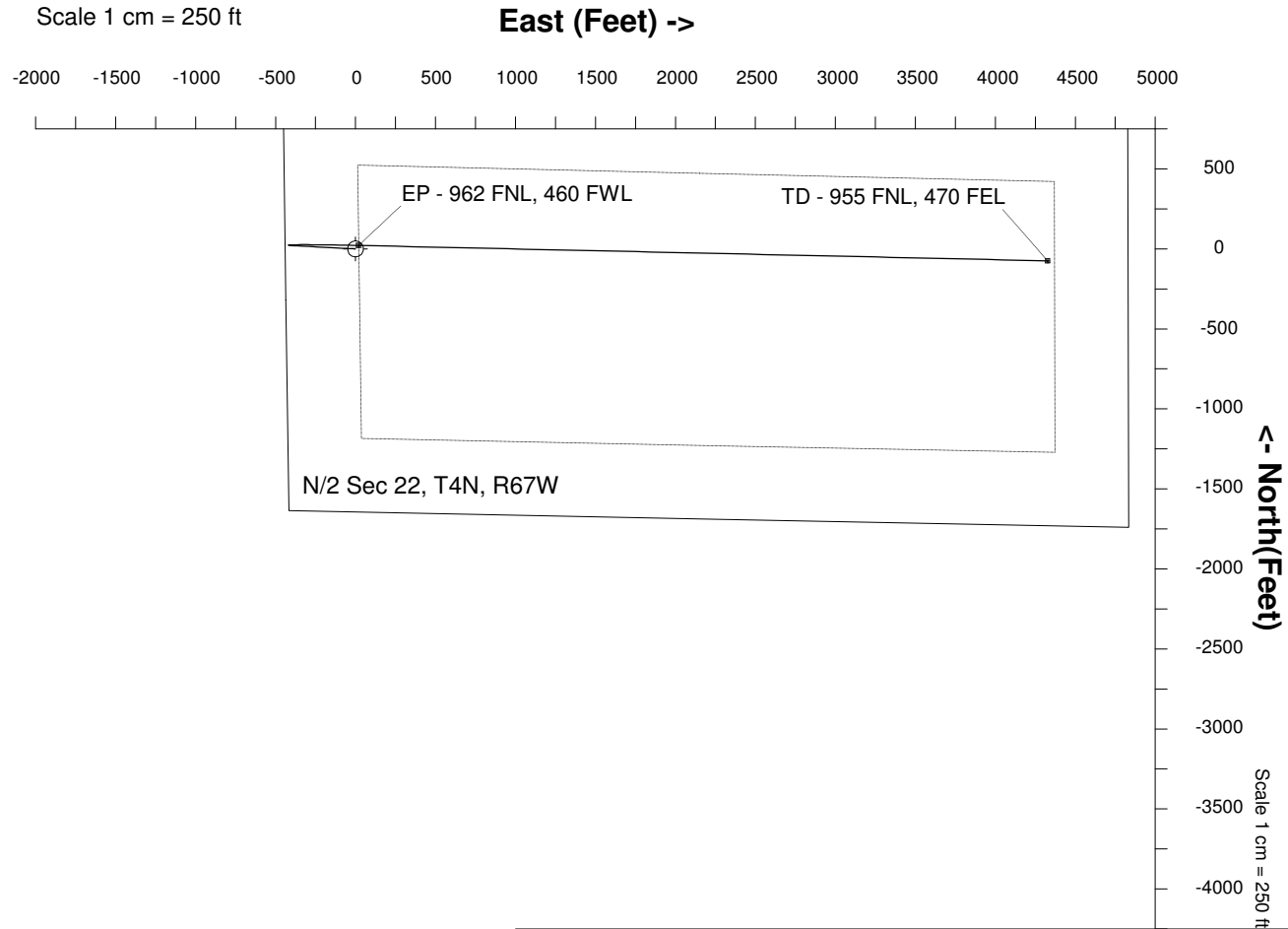
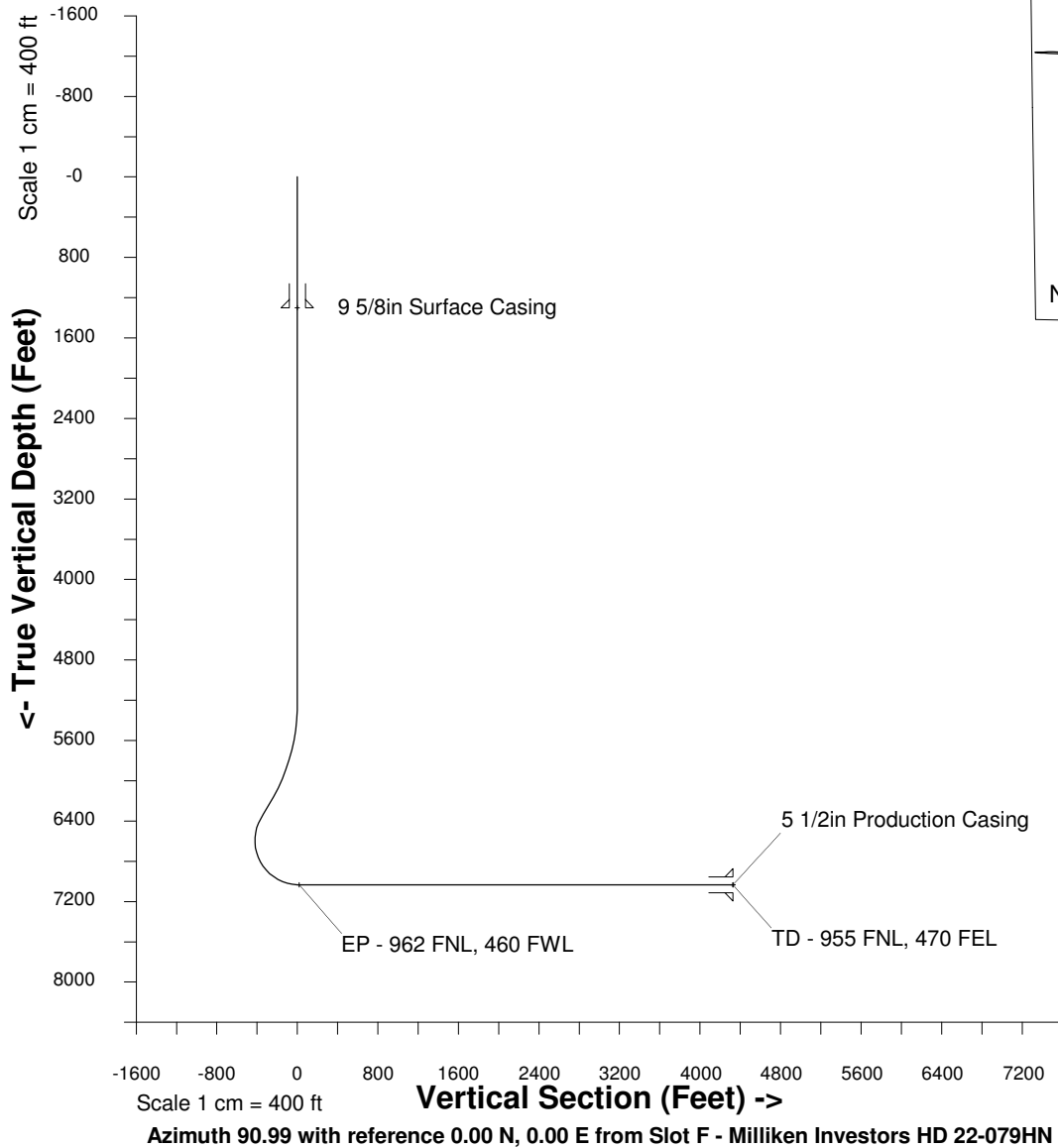
Location	Colorado	Slot	Slot F - Milliken Investors HD 22-079HN
Field	Wattenberg	Well	Milliken Investors HD 22-079HN
Installation	Milliken Investors	Wellbore	Milliken Investors HD 22-079HN (PWB)

Created by admin
Date plotted 3-Feb-2015

Plot reference is Milliken Investors HD 22-079HN (PWB).
Ref wellpath is Milliken Investors HD 22-079HN (PWP#1).
Coordinates are in Feet reference Slot F - Milliken Investors HD 22-079HN.
True Vertical Depths are reference Rig Datum.
Measured Depths are reference Rig Datum.
Rig Datum: Planned Datum #1
Rig Datum to Mean Sea Level: 4909.80 ft.
Plot North is aligned to GRID North.



8-Jan-2015
IGRF Model [1900.0-2020.0] Dip: 66.82 deg Field: 52607.4 nT
Lat: N40 18 10.2888 Long: W104 53 5.2800 Elev: 4893.60 ft
Magnetic North is 8.52 deg East of True North
GRID North is 0.40 deg East of True North
To correct azimuth from True to GRID subtract 0.40 deg
To correct azimuth from Magnetic to GRID add 8.13 deg



WELL PROFILE DATA

Point	MD	Inc	Azi	TVD	North	East	deg/100ft	V. Sect
Tie on	16.20	0.00	0.00	16.20	S 0.00	W 0.00		0.00
KOP	5240.00	0.00	272.92	5240.00	S 0.00	W 0.00	0.00	0.00
End of Build	6272.68	30.98	272.92	6223.09	N 13.87	W 272.10	9.84	-272.30
End of Hold	6440.05	30.98	272.92	6366.59	N 18.25	W 358.14	0.00	-358.41
Target EP - 9...60 FWL	7370.56	90.00	91.28	7034.00	N 21.27	E 19.94	42.65	19.56
T.D. & Target TD ...FEL	11678.72	90.00	91.28	7034.00	S 74.89	E 4327.01	0.00	4327.66