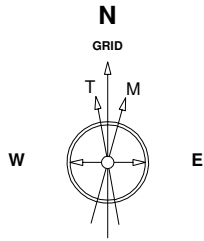


Great Western Operating Company, LLC

Location Colorado
Field Wattenberg
Installation Milliken Investors
Slot Slot M - Milliken Investors HD 22-162HN
Well Milliken Investors HD 22-162HN
Wellbore Milliken Investors HD 22-162HN (PWB)

Created by admin
Date plotted 3-Feb-2015

Plot reference is Milliken Investors HD 22-162HN (PWB).
Ref wellpath is Milliken Investors HD 22-162HN (PWP#1).
Coordinates are in Feet reference Slot M - Milliken Investors HD 22-162HN.
True Vertical Depths are reference Rig Datum.
Measured Depths are reference Rig Datum.
Rig Datum: Planned Datum #1
Rig Datum to Mean Sea Level: 4909.80 ft.
Plot North is aligned to GRID North.

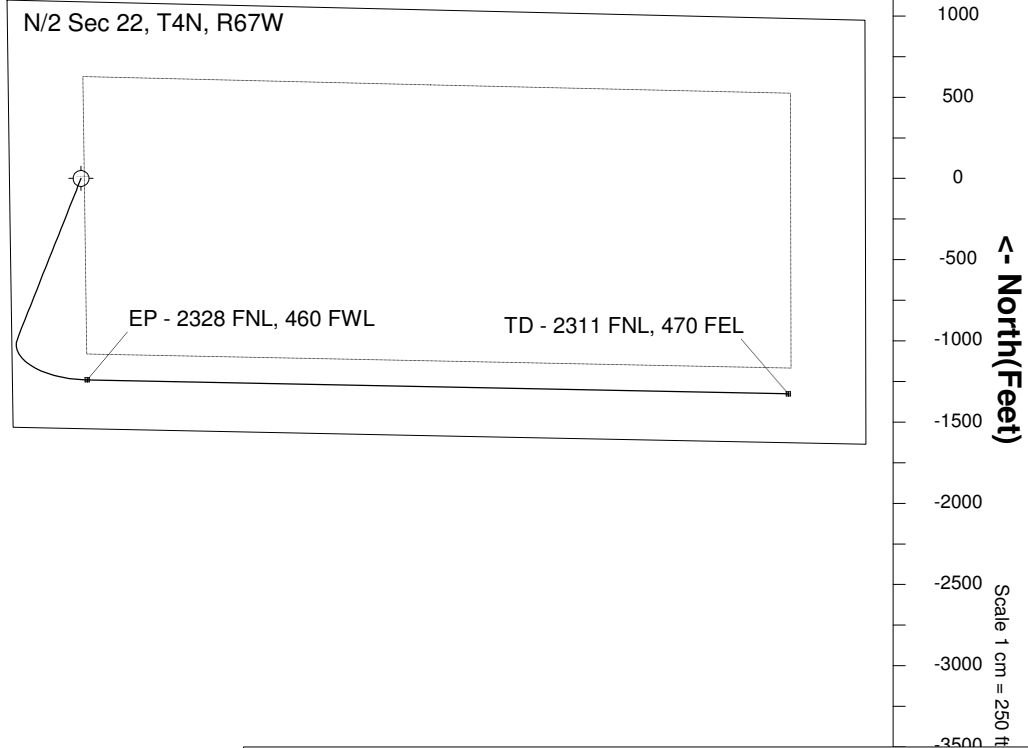
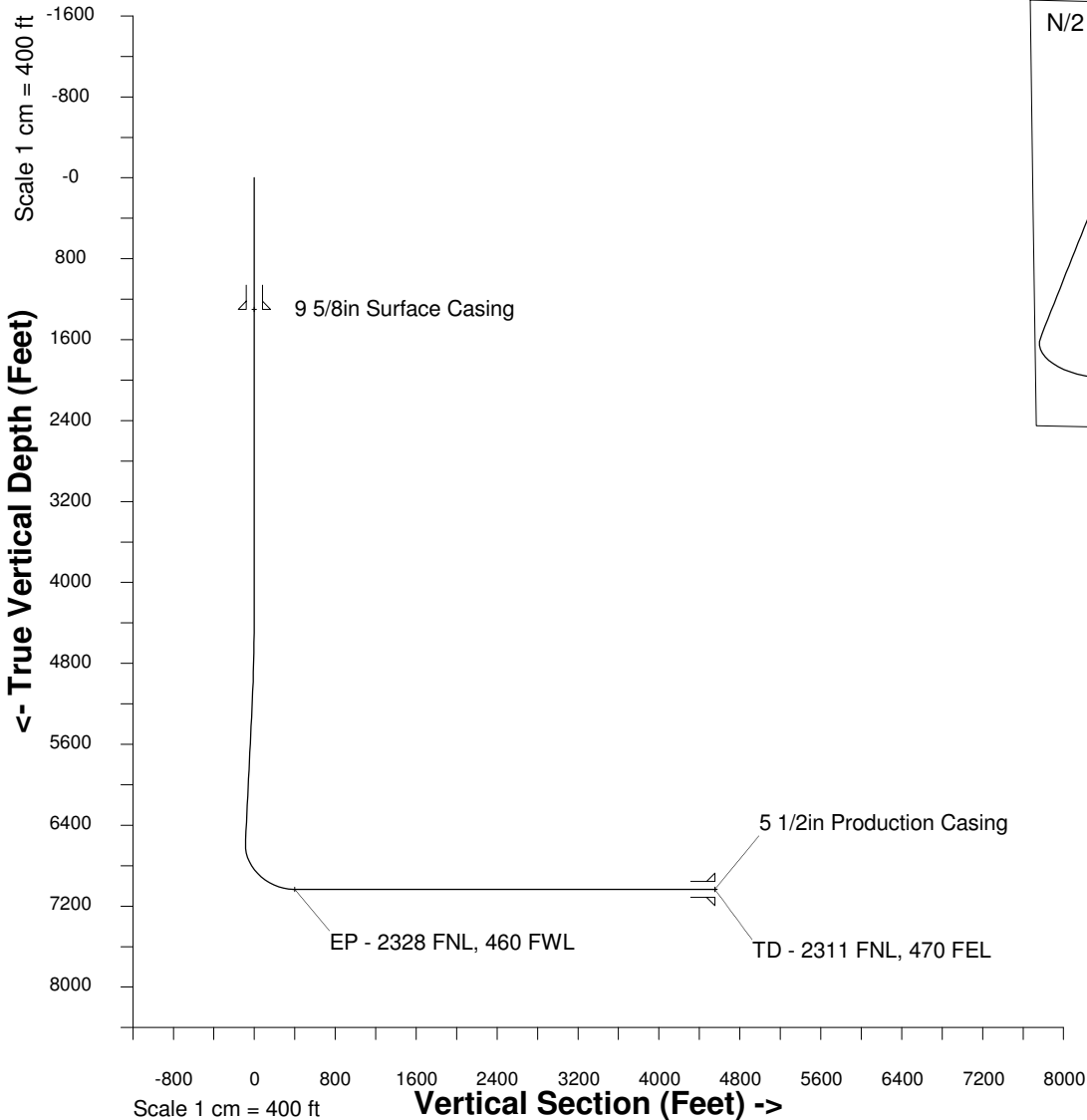


8-Jan-2015
IGRF Model [1900.0-2020.0] Dip: 66.82 deg Field: 52607.4 nT
Lat: N40 18 10.2888 Long: W104 53 5.2800 Elev: 4893.60 ft
Magnetic North is 8.52 deg East of True North
GRID North is 0.40 deg East of True North
To correct azimuth from True to GRID subtract 0.40 deg
To correct azimuth from Magnetic to GRID add 8.13 deg

Scale 1 cm = 250 ft

East (Feet) ->

-2000 -1500 -1000 -500 0 500 1000 1500 2000 2500 3000 3500 4000 4500 5000



WELL PROFILE DATA

Point	MD	Inc	Azi	TVD	North	East	deg/100ft	V. Sect
Tie on	16.20	0.00	0.00	16.20	S 0.00	W 0.00		0.00
KOP	4250.00	0.00	201.68	4250.00	S 0.00	W 0.00	0.00	0.00
End of Build	5259.28	30.28	201.68	5212.96	S 242.10	W 96.25	9.84	-21.53
End of Hold	6840.97	30.28	201.68	6578.87	S 983.18	W 390.85	0.00	-87.44
Target EP - 2...60 FWL	7611.66	90.00	91.14	7034.00	S 1240.59	E 37.90	42.65	397.71
T.D. & Target TD ...FEL	11929.79	90.00	91.14	7034.00	S 1326.47	E 4355.18	0.00	4552.71