

BONANZA CREEK ENERGY INC.

WELD COUNTY, COLORADO (NAD 83)

NW NW SEC. 22 T5N R61W 6th P.M.

PRONGHORN 11-14-22HNB

ORIGINAL WELLBORE

18 August, 2015

Plan: PROPOSAL #4





Project: WELD COUNTY, COLORADO (NAD 83)
Site: NW NW SEC. 22 T5N R61W 6th P.M.
Well: PRONGHORN 11-14-22HNB
Wellbore: ORIGINAL WELLBORE
Design: PROPOSAL #4

ANNOTATIONS

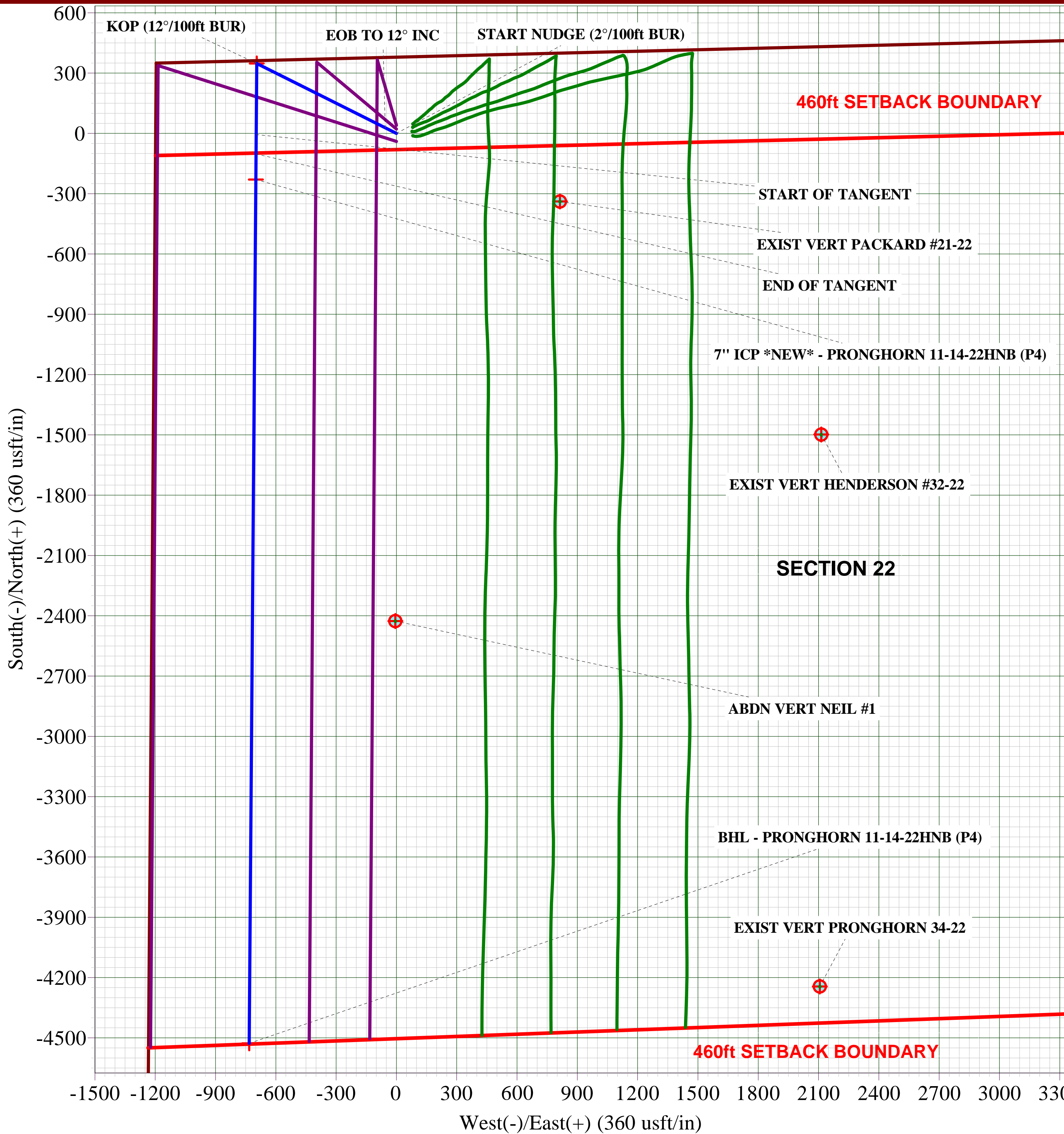
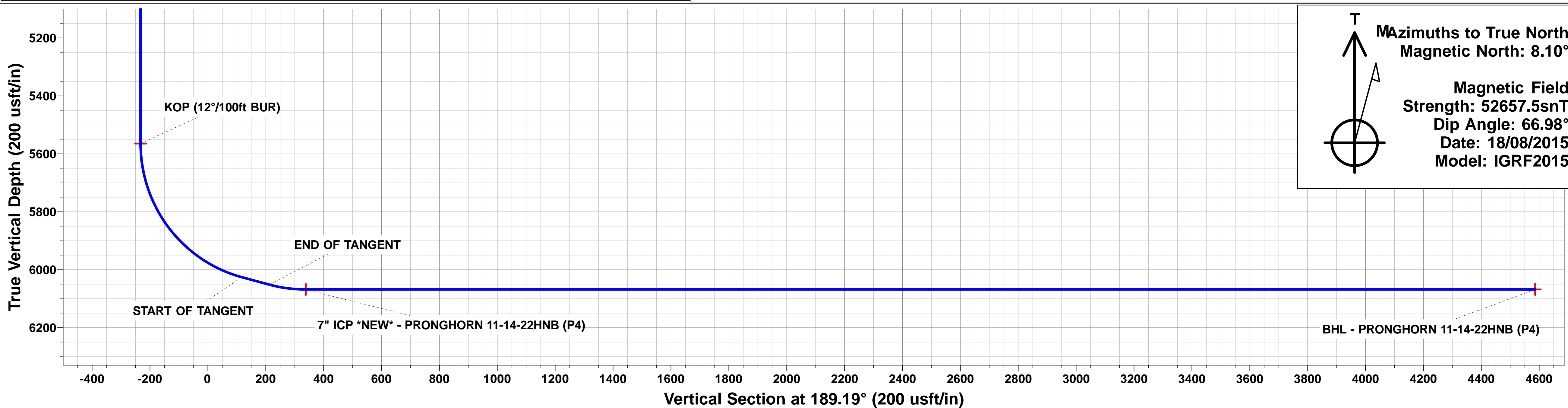
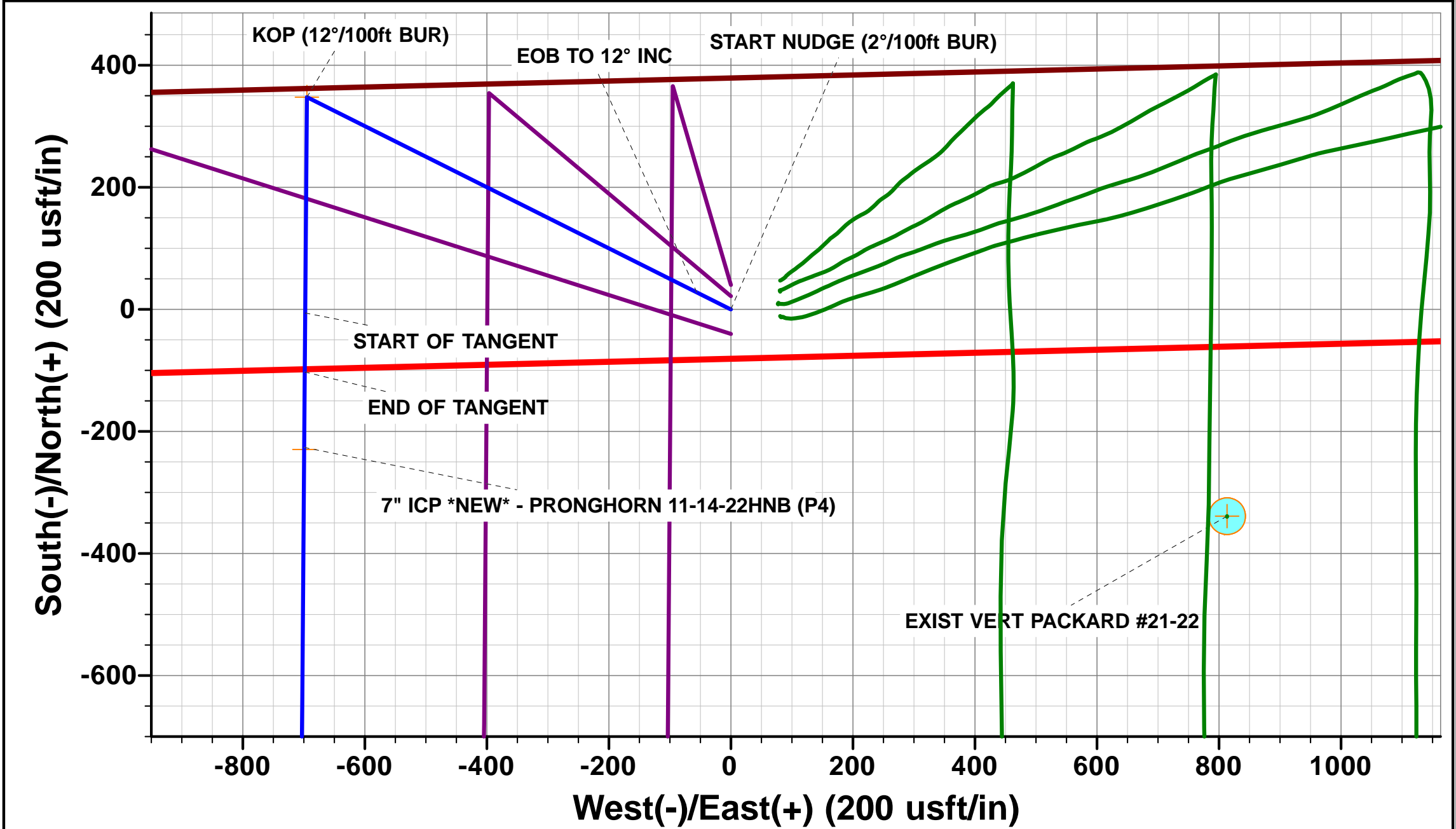
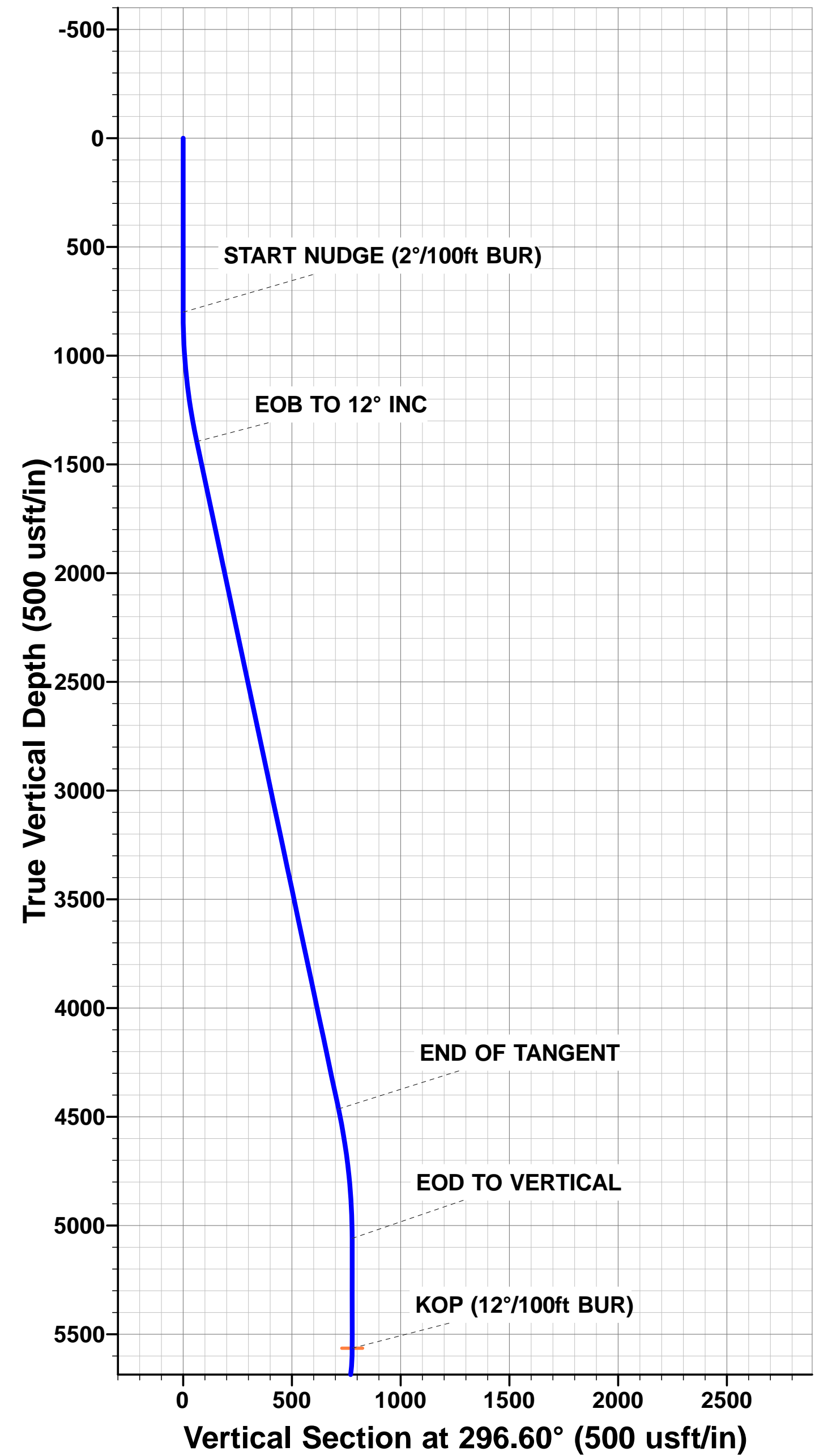
TVD	MD	Inc	Azi	+N/-S	+E/-W	VSec	Dep	Annotation
800.0	800.0	0.00	0.00	0.0	0.0	0.0	0.0	START NUDGE (2°/100ft BUR)
1395.4	1399.8	12.00	296.60	28.0	-55.9	-18.7	62.6	EOB TO 12° INC
4464.3	4537.2	12.00	296.60	319.9	-639.0	-213.8	714.7	END OF TANGENT
5059.7	5137.0	0.00	0.00	347.9	-695.0	-232.5	777.2	EOD TO VERTICAL
5564.7	5642.0	0.00	0.00	347.9	-695.0	-232.5	777.2	KOP (12°/100ft BUR)
6025.9	6267.0	75.00	180.44	-6.0	-697.7	117.3	1131.1	START OF TANGENT
6051.8	6367.0	75.00	180.44	-102.6	-698.4	212.8	1227.7	END OF TANGENT
6068.0	6492.0	90.00	180.44	-226.1	-699.4	334.9	1351.3	7" ICP *NEW* - PRONGHORN 11-14-22HNB (P4)
6068.0	10793.2	90.00	180.44	-4527.2	-732.4	4586.1	5652.5	BHL - PRONGHORN 11-14-22HNB (P4)

LOCAL COORDINATES:

SHL: 379ft FNL & 1198ft FWL Sec 22
7" ICP *NEW*: ft 589ft FNL & 500ft FWL Sec 22
BHL: 470ft FSL & 500ft FWL Sec 22

WELLBORE TARGET DETAILS (LAT/LONG)

Name	TVD	+N/-S	+E/-W	Latitude	Longitude
KOP - PRONGHORN 11-14-22HNB (P4)	5564.7	347.9	-695.0	40.393575	-104.202635
BHL - PRONGHORN 11-14-22HNB (P4)	6068.0	-4527.3	-732.4	40.380193	-104.202769
7" ICP *NEW* - PRONGHORN 11-14-22HNB (P4)	6068.0	-229.5	-699.2	40.391990	-104.202650



Database:	EDM 5000.1 Single User Db	Local Co-ordinate Reference:	Well PRONGHORN 11-14-22HNB
Company:	BONANZA CREEK ENERGY INC.	TVD Reference:	KB-EST @ 4678.0usft (Original Well Elev)
Project:	WELD COUNTY, COLORADO (NAD 83)	MD Reference:	KB-EST @ 4678.0usft (Original Well Elev)
Site:	NW NW SEC. 22 T5N R61W 6th P.M.	North Reference:	True
Well:	PRONGHORN 11-14-22HNB	Survey Calculation Method:	Minimum Curvature
Wellbore:	ORIGINAL WELLBORE		
Design:	PROPOSAL #4		

Project	WELD COUNTY, COLORADO (NAD 83)		
Map System:	US State Plane 1983	System Datum:	Mean Sea Level
Geo Datum:	North American Datum 1983		
Map Zone:	Colorado Northern Zone		Using geodetic scale factor

Site	NW NW SEC. 22 T5N R61W 6th P.M.				
Site Position:		Northing:	1,388,515.79 usft	Latitude:	40.392590
From:	Lat/Long	Easting:	3,362,131.84 usft	Longitude:	-104.199850
Position Uncertainty:	0.0 usft	Slot Radius:	1.10000 ft	Grid Convergence:	0.84 °

Well	PRONGHORN 11-14-22HNB					
Well Position	+N/-S	10.9 usft	Northing:	1,388,525.52 usft	Latitude:	40.392620
	+E/-W	-80.8 usft	Easting:	3,362,050.92 usft	Longitude:	-104.200140
Position Uncertainty		0.0 usft	Wellhead Elevation:	usft	Ground Level:	4,661.0 usft

Wellbore	ORIGINAL WELLBORE				
Magnetics	Model Name	Sample Date	Declination (°)	Dip Angle (°)	Field Strength (nT)
	IGRF2015	18/08/2015	8.10	66.98	52,657

Design	PROPOSAL #4			
Audit Notes:				
Version:	Phase:	PROTOTYPE	Tie On Depth:	0.0
Vertical Section:	Depth From (TVD) (usft)	+N/-S (usft)	+E/-W (usft)	Direction (°)
	0.0	0.0	0.0	189.19

Plan Sections											
MD (usft)	Inc (°)	Azi (°)	Vertical Depth	SS (usft)	+N/-S (usft)	+E/-W (usft)	Dogleg Rate (°/100usf)	Build Rate (°/100usf)	Turn Rate (°/100usf)	TFO (°)	Target
0.0	0.00	0.00	0.0	-4,678.0	0.0	0.0	0.00	0.00	0.00	0.00	
800.0	0.00	0.00	800.0	-3,878.0	0.0	0.0	0.00	0.00	0.00	0.00	
1,399.8	12.00	296.60	1,395.4	-3,282.6	28.0	-55.9	2.00	2.00	0.00	296.60	
4,537.2	12.00	296.60	4,464.3	-213.7	319.9	-639.0	0.00	0.00	0.00	0.00	
5,137.0	0.00	0.00	5,059.7	381.7	347.9	-695.0	2.00	-2.00	0.00	180.00	
5,642.0	0.00	0.00	5,564.7	886.7	347.9	-695.0	0.00	0.00	0.00	0.00	KOP - PRONGHOF
6,267.0	75.00	180.44	6,025.9	1,347.9	-5.9	-697.7	12.00	12.00	0.00	180.44	
6,367.0	75.00	180.44	6,051.8	1,373.8	-102.5	-698.4	0.00	0.00	0.00	0.00	
6,492.0	90.00	180.44	6,068.0	1,390.0	-226.1	-699.4	12.00	12.00	0.00	0.00	
10,793.2	90.00	180.44	6,068.0	1,390.0	-4,527.3	-732.4	0.00	0.00	0.00	0.00	BHL - PRONGHOR

Database:	EDM 5000.1 Single User Db	Local Co-ordinate Reference:	Well PRONGHORN 11-14-22HNB
Company:	BONANZA CREEK ENERGY INC.	TVD Reference:	KB-EST @ 4678.0usft (Original Well Elev)
Project:	WELD COUNTY, COLORADO (NAD 83)	MD Reference:	KB-EST @ 4678.0usft (Original Well Elev)
Site:	NW NW SEC. 22 T5N R61W 6th P.M.	North Reference:	True
Well:	PRONGHORN 11-14-22HNB	Survey Calculation Method:	Minimum Curvature
Wellbore:	ORIGINAL WELLBORE		
Design:	PROPOSAL #4		

Planned Survey

MD (usft)	Inc (°)	Azi (°)	TVD (usft)	SS (usft)	+N/-S (usft)	+E/-W (usft)	Vertical Section (usft)	Dogleg Rate (°/100usft)	Build Rate (°/100usft)	Turn Rate (°/100usft)
0.0	0.00	0.00	0.0	4,678.00	0.0	0.0	0.0	0.00	0.00	0.00
100.0	0.00	0.00	100.0	4,578.00	0.0	0.0	0.0	0.00	0.00	0.00
200.0	0.00	0.00	200.0	4,478.00	0.0	0.0	0.0	0.00	0.00	0.00
300.0	0.00	0.00	300.0	4,378.00	0.0	0.0	0.0	0.00	0.00	0.00
400.0	0.00	0.00	400.0	4,278.00	0.0	0.0	0.0	0.00	0.00	0.00
500.0	0.00	0.00	500.0	4,178.00	0.0	0.0	0.0	0.00	0.00	0.00
600.0	0.00	0.00	600.0	4,078.00	0.0	0.0	0.0	0.00	0.00	0.00
700.0	0.00	0.00	700.0	3,978.00	0.0	0.0	0.0	0.00	0.00	0.00
START NUDGE (2°/100ft BUR)										
800.0	0.00	0.00	800.0	3,878.00	0.0	0.0	0.0	0.00	0.00	0.00
900.0	2.00	296.60	900.0	3,778.02	0.8	-1.6	-0.5	2.00	2.00	0.00
1,000.0	4.00	296.60	999.8	3,678.16	3.1	-6.2	-2.1	2.00	2.00	0.00
1,100.0	6.00	296.60	1,099.5	3,578.55	7.0	-14.0	-4.7	2.00	2.00	0.00
1,200.0	8.00	296.60	1,198.7	3,479.30	12.5	-24.9	-8.3	2.00	2.00	0.00
1,300.0	10.00	296.60	1,297.5	3,380.53	19.5	-38.9	-13.0	2.00	2.00	0.00
EOB TO 12° INC										
1,399.8	12.00	296.60	1,395.4	3,282.57	28.0	-55.9	-18.7	2.00	2.00	0.00
1,400.0	12.00	296.60	1,395.6	3,282.38	28.0	-56.0	-18.7	0.09	0.09	0.00
1,500.0	12.00	296.60	1,493.4	3,184.56	37.3	-74.6	-24.9	0.00	0.00	0.00
1,600.0	12.00	296.60	1,591.3	3,086.74	46.6	-93.1	-31.2	0.00	0.00	0.00
1,700.0	12.00	296.60	1,689.1	2,988.93	55.9	-111.7	-37.4	0.00	0.00	0.00
1,800.0	12.00	296.60	1,786.9	2,891.11	65.2	-130.3	-43.6	0.00	0.00	0.00
1,900.0	12.00	296.60	1,884.7	2,793.30	74.6	-148.9	-49.8	0.00	0.00	0.00
2,000.0	12.00	296.60	1,982.5	2,695.48	83.9	-167.5	-56.0	0.00	0.00	0.00
2,100.0	12.00	296.60	2,080.3	2,597.66	93.2	-186.1	-62.2	0.00	0.00	0.00
2,200.0	12.00	296.60	2,178.2	2,499.85	102.5	-204.7	-68.5	0.00	0.00	0.00
2,300.0	12.00	296.60	2,276.0	2,402.03	111.8	-223.2	-74.7	0.00	0.00	0.00
2,400.0	12.00	296.60	2,373.8	2,304.22	121.1	-241.8	-80.9	0.00	0.00	0.00
2,500.0	12.00	296.60	2,471.6	2,206.40	130.4	-260.4	-87.1	0.00	0.00	0.00
2,600.0	12.00	296.60	2,569.4	2,108.58	139.7	-279.0	-93.3	0.00	0.00	0.00
2,700.0	12.00	296.60	2,667.2	2,010.77	149.0	-297.6	-99.5	0.00	0.00	0.00
2,800.0	12.00	296.60	2,765.0	1,912.95	158.3	-316.2	-105.8	0.00	0.00	0.00
2,900.0	12.00	296.60	2,862.9	1,815.13	167.6	-334.8	-112.0	0.00	0.00	0.00
3,000.0	12.00	296.60	2,960.7	1,717.32	176.9	-353.3	-118.2	0.00	0.00	0.00
3,100.0	12.00	296.60	3,058.5	1,619.50	186.2	-371.9	-124.4	0.00	0.00	0.00
3,200.0	12.00	296.60	3,156.3	1,521.69	195.5	-390.5	-130.6	0.00	0.00	0.00
3,300.0	12.00	296.60	3,254.1	1,423.87	204.8	-409.1	-136.9	0.00	0.00	0.00
3,400.0	12.00	296.60	3,351.9	1,326.05	214.1	-427.7	-143.1	0.00	0.00	0.00
3,500.0	12.00	296.60	3,449.8	1,228.24	223.4	-446.3	-149.3	0.00	0.00	0.00
3,600.0	12.00	296.60	3,547.6	1,130.42	232.7	-464.9	-155.5	0.00	0.00	0.00
3,700.0	12.00	296.60	3,645.4	1,032.61	242.0	-483.4	-161.7	0.00	0.00	0.00
3,800.0	12.00	296.60	3,743.2	934.79	251.3	-502.0	-167.9	0.00	0.00	0.00
3,900.0	12.00	296.60	3,841.0	836.97	260.6	-520.6	-174.2	0.00	0.00	0.00
4,000.0	12.00	296.60	3,938.8	739.16	270.0	-539.2	-180.4	0.00	0.00	0.00
4,100.0	12.00	296.60	4,036.7	641.34	279.3	-557.8	-186.6	0.00	0.00	0.00
4,200.0	12.00	296.60	4,134.5	543.52	288.6	-576.4	-192.8	0.00	0.00	0.00
4,300.0	12.00	296.60	4,232.3	445.71	297.9	-595.0	-199.0	0.00	0.00	0.00
4,400.0	12.00	296.60	4,330.1	347.89	307.2	-613.5	-205.2	0.00	0.00	0.00
4,500.0	12.00	296.60	4,427.9	250.08	316.5	-632.1	-211.5	0.00	0.00	0.00
END OF TANGENT										
4,537.2	12.00	296.60	4,464.3	213.69	319.9	-639.0	-213.8	0.00	0.00	0.00
4,600.0	10.74	296.60	4,525.9	152.12	325.5	-650.1	-217.5	2.00	-2.00	0.00
4,700.0	8.74	296.60	4,624.4	53.57	333.1	-665.2	-222.5	2.00	-2.00	0.00

Database:	EDM 5000.1 Single User Db	Local Co-ordinate Reference:	Well PRONGHORN 11-14-22HNB
Company:	BONANZA CREEK ENERGY INC.	TVD Reference:	KB-EST @ 4678.0usft (Original Well Elev)
Project:	WELD COUNTY, COLORADO (NAD 83)	MD Reference:	KB-EST @ 4678.0usft (Original Well Elev)
Site:	NW NW SEC. 22 T5N R61W 6th P.M.	North Reference:	True
Well:	PRONGHORN 11-14-22HNB	Survey Calculation Method:	Minimum Curvature
Wellbore:	ORIGINAL WELLBORE		
Design:	PROPOSAL #4		

Planned Survey

MD (usft)	Inc (°)	Azi (°)	TVD (usft)	SS (usft)	+N/-S (usft)	+E/-W (usft)	Vertical Section (usft)	Dogleg Rate (°/100usft)	Build Rate (°/100usft)	Turn Rate (°/100usft)
4,800.0	6.74	296.60	4,723.5	-45.52	339.1	-677.3	-226.6	2.00	-2.00	0.00
4,900.0	4.74	296.60	4,823.0	-145.01	343.6	-686.2	-229.6	2.00	-2.00	0.00
5,000.0	2.74	296.60	4,922.8	-244.79	346.5	-692.1	-231.5	2.00	-2.00	0.00
5,100.0	0.74	296.60	5,022.7	-344.74	347.8	-694.8	-232.4	2.00	-2.00	0.00
EOD TO VERTICAL										
5,137.0	0.00	0.00	5,059.7	-381.74	347.9	-695.0	-232.5	2.00	-2.00	0.00
5,200.0	0.00	0.00	5,122.7	-444.74	347.9	-695.0	-232.5	0.00	0.00	0.00
5,300.0	0.00	0.00	5,222.7	-544.74	347.9	-695.0	-232.5	0.00	0.00	0.00
5,400.0	0.00	0.00	5,322.7	-644.74	347.9	-695.0	-232.5	0.00	0.00	0.00
5,500.0	0.00	0.00	5,422.7	-744.74	347.9	-695.0	-232.5	0.00	0.00	0.00
5,600.0	0.00	0.00	5,522.7	-844.74	347.9	-695.0	-232.5	0.00	0.00	0.00
KOP (12°/100ft BUR)										
5,642.0	0.00	0.00	5,564.7	-886.74	347.9	-695.0	-232.5	0.00	0.00	0.00
5,700.0	6.96	180.44	5,622.6	-944.60	344.4	-695.0	-229.0	12.01	12.01	0.00
5,800.0	18.96	180.44	5,719.9	-1,041.87	322.0	-695.2	-206.9	12.00	12.00	0.00
5,900.0	30.96	180.44	5,810.4	-1,132.36	279.9	-695.5	-165.2	12.00	12.00	0.00
6,000.0	42.96	180.44	5,890.1	-1,212.12	219.9	-696.0	-105.9	12.00	12.00	0.00
6,100.0	54.96	180.44	5,955.6	-1,277.65	144.6	-696.5	-31.5	12.00	12.00	0.00
6,200.0	66.96	180.44	6,004.1	-1,326.09	57.3	-697.2	54.8	12.00	12.00	0.00
START OF TANGENT										
6,267.0	75.00	180.44	6,025.9	-1,347.91	-6.0	-697.7	117.3	11.99	11.99	0.00
6,300.0	75.00	180.44	6,034.4	-1,356.45	-37.8	-697.9	148.8	0.00	0.00	0.00
END OF TANGENT										
6,367.0	75.00	180.44	6,051.8	-1,373.79	-102.6	-698.4	212.8	0.00	0.00	0.00
6,400.0	78.96	180.44	6,059.2	-1,381.22	-134.7	-698.7	244.6	12.01	12.01	0.00
7" ICP *NEW* - PRONGHORN 11-14-22HNB (P4)										
6,492.0	90.00	180.44	6,068.0	-1,390.05	-226.1	-699.4	334.9	11.99	11.99	0.00
6,500.0	90.00	180.44	6,068.0	-1,390.05	-234.1	-699.4	342.8	0.00	0.00	0.00
6,600.0	90.00	180.44	6,068.0	-1,390.05	-334.1	-700.2	441.7	0.00	0.00	0.00
6,700.0	90.00	180.44	6,068.0	-1,390.05	-434.1	-701.0	540.5	0.00	0.00	0.00
6,800.0	90.00	180.44	6,068.0	-1,390.05	-534.1	-701.8	639.3	0.00	0.00	0.00
6,900.0	90.00	180.44	6,068.0	-1,390.05	-634.1	-702.5	738.2	0.00	0.00	0.00
7,000.0	90.00	180.44	6,068.0	-1,390.05	-734.1	-703.3	837.0	0.00	0.00	0.00
7,100.0	90.00	180.44	6,068.0	-1,390.05	-834.1	-704.1	935.9	0.00	0.00	0.00
7,200.0	90.00	180.44	6,068.0	-1,390.05	-934.1	-704.8	1,034.7	0.00	0.00	0.00
7,300.0	90.00	180.44	6,068.0	-1,390.05	-1,034.1	-705.6	1,133.5	0.00	0.00	0.00
7,400.0	90.00	180.44	6,068.0	-1,390.05	-1,134.1	-706.4	1,232.4	0.00	0.00	0.00
7,500.0	90.00	180.44	6,068.0	-1,390.05	-1,234.1	-707.1	1,331.2	0.00	0.00	0.00
7,600.0	90.00	180.44	6,068.0	-1,390.05	-1,334.1	-707.9	1,430.0	0.00	0.00	0.00
7,700.0	90.00	180.44	6,068.0	-1,390.05	-1,434.1	-708.7	1,528.9	0.00	0.00	0.00
7,800.0	90.00	180.44	6,068.0	-1,390.05	-1,534.1	-709.4	1,627.7	0.00	0.00	0.00
7,900.0	90.00	180.44	6,068.0	-1,390.05	-1,634.1	-710.2	1,726.5	0.00	0.00	0.00
8,000.0	90.00	180.44	6,068.0	-1,390.05	-1,734.1	-711.0	1,825.4	0.00	0.00	0.00
8,100.0	90.00	180.44	6,068.0	-1,390.05	-1,834.1	-711.7	1,924.2	0.00	0.00	0.00
8,200.0	90.00	180.44	6,068.0	-1,390.05	-1,934.1	-712.5	2,023.1	0.00	0.00	0.00
8,300.0	90.00	180.44	6,068.0	-1,390.05	-2,034.1	-713.3	2,121.9	0.00	0.00	0.00
8,400.0	90.00	180.44	6,068.0	-1,390.05	-2,134.1	-714.0	2,220.7	0.00	0.00	0.00
8,500.0	90.00	180.44	6,068.0	-1,390.05	-2,234.1	-714.8	2,319.6	0.00	0.00	0.00
8,600.0	90.00	180.44	6,068.0	-1,390.05	-2,334.1	-715.6	2,418.4	0.00	0.00	0.00
8,700.0	90.00	180.44	6,068.0	-1,390.05	-2,434.1	-716.3	2,517.2	0.00	0.00	0.00
8,800.0	90.00	180.44	6,068.0	-1,390.05	-2,534.1	-717.1	2,616.1	0.00	0.00	0.00
8,900.0	90.00	180.44	6,068.0	-1,390.05	-2,634.1	-717.9	2,714.9	0.00	0.00	0.00
9,000.0	90.00	180.44	6,068.0	-1,390.05	-2,734.1	-718.6	2,813.7	0.00	0.00	0.00
9,100.0	90.00	180.44	6,068.0	-1,390.05	-2,834.1	-719.4	2,912.6	0.00	0.00	0.00

Database:	EDM 5000.1 Single User Db	Local Co-ordinate Reference:	Well PRONGHORN 11-14-22HNB
Company:	BONANZA CREEK ENERGY INC.	TVD Reference:	KB-EST @ 4678.0usft (Original Well Elev)
Project:	WELD COUNTY, COLORADO (NAD 83)	MD Reference:	KB-EST @ 4678.0usft (Original Well Elev)
Site:	NW NW SEC. 22 T5N R61W 6th P.M.	North Reference:	True
Well:	PRONGHORN 11-14-22HNB	Survey Calculation Method:	Minimum Curvature
Wellbore:	ORIGINAL WELLBORE		
Design:	PROPOSAL #4		

Planned Survey

MD (usft)	Inc (°)	Azi (°)	TVD (usft)	SS (usft)	+N/-S (usft)	+E/-W (usft)	Vertical Section (usft)	Dogleg Rate (°/100usft)	Build Rate (°/100usft)	Turn Rate (°/100usft)
9,200.0	90.00	180.44	6,068.0	-1,390.05	-2,934.1	-720.2	3,011.4	0.00	0.00	0.00
9,300.0	90.00	180.44	6,068.0	-1,390.05	-3,034.1	-720.9	3,110.3	0.00	0.00	0.00
9,400.0	90.00	180.44	6,068.0	-1,390.05	-3,134.1	-721.7	3,209.1	0.00	0.00	0.00
9,500.0	90.00	180.44	6,068.0	-1,390.05	-3,234.0	-722.5	3,307.9	0.00	0.00	0.00
9,600.0	90.00	180.44	6,068.0	-1,390.05	-3,334.0	-723.3	3,406.8	0.00	0.00	0.00
9,700.0	90.00	180.44	6,068.0	-1,390.05	-3,434.0	-724.0	3,505.6	0.00	0.00	0.00
9,800.0	90.00	180.44	6,068.0	-1,390.05	-3,534.0	-724.8	3,604.4	0.00	0.00	0.00
9,900.0	90.00	180.44	6,068.0	-1,390.05	-3,634.0	-725.6	3,703.3	0.00	0.00	0.00
10,000.0	90.00	180.44	6,068.0	-1,390.05	-3,734.0	-726.3	3,802.1	0.00	0.00	0.00
10,100.0	90.00	180.44	6,068.0	-1,390.05	-3,834.0	-727.1	3,900.9	0.00	0.00	0.00
10,200.0	90.00	180.44	6,068.0	-1,390.05	-3,934.0	-727.9	3,999.8	0.00	0.00	0.00
10,300.0	90.00	180.44	6,068.0	-1,390.05	-4,034.0	-728.6	4,098.6	0.00	0.00	0.00
10,400.0	90.00	180.44	6,068.0	-1,390.05	-4,134.0	-729.4	4,197.4	0.00	0.00	0.00
10,500.0	90.00	180.44	6,068.0	-1,390.05	-4,234.0	-730.2	4,296.3	0.00	0.00	0.00
10,600.0	90.00	180.44	6,068.0	-1,390.05	-4,334.0	-730.9	4,395.1	0.00	0.00	0.00
10,700.0	90.00	180.44	6,068.0	-1,390.05	-4,434.0	-731.7	4,494.0	0.00	0.00	0.00
BHL - PRONGHORN 11-14-22HNB (P4)										
10,793.2	90.00	180.44	6,068.0	-1,390.05	-4,527.2	-732.4	4,586.1	0.00	0.00	0.00

Plan Annotations

MD (usft)	TVD (usft)	Local Coordinates		Comment
		+N/-S (usft)	+E/-W (usft)	
800.0	800.0	0.0	0.0	START NUDGE (2°/100ft BUR)
1,399.8	1,395.4	28.0	-55.9	EOB TO 12° INC
4,537.2	4,464.3	319.9	-639.0	END OF TANGENT
5,137.0	5,059.7	347.9	-695.0	EOD TO VERTICAL
5,642.0	5,564.7	347.9	-695.0	KOP (12°/100ft BUR)
6,267.0	6,025.9	-6.0	-697.7	START OF TANGENT
6,367.0	6,051.8	-102.6	-698.4	END OF TANGENT
6,492.0	6,068.0	-226.1	-699.4	7" ICP *NEW* - PRONGHORN 11-14-22HNB (P4)
10,793.2	6,068.0	-4,527.2	-732.4	BHL - PRONGHORN 11-14-22HNB (P4)