

Bayswater Exploration & Production, LLC

Well Name: **Sherley I-4-9HN**

Surface Location: Sherley Pad Sec.4-T5N-R65W

North American Datum 1983 , US State Plane 1983 , Colorado Northern Zone

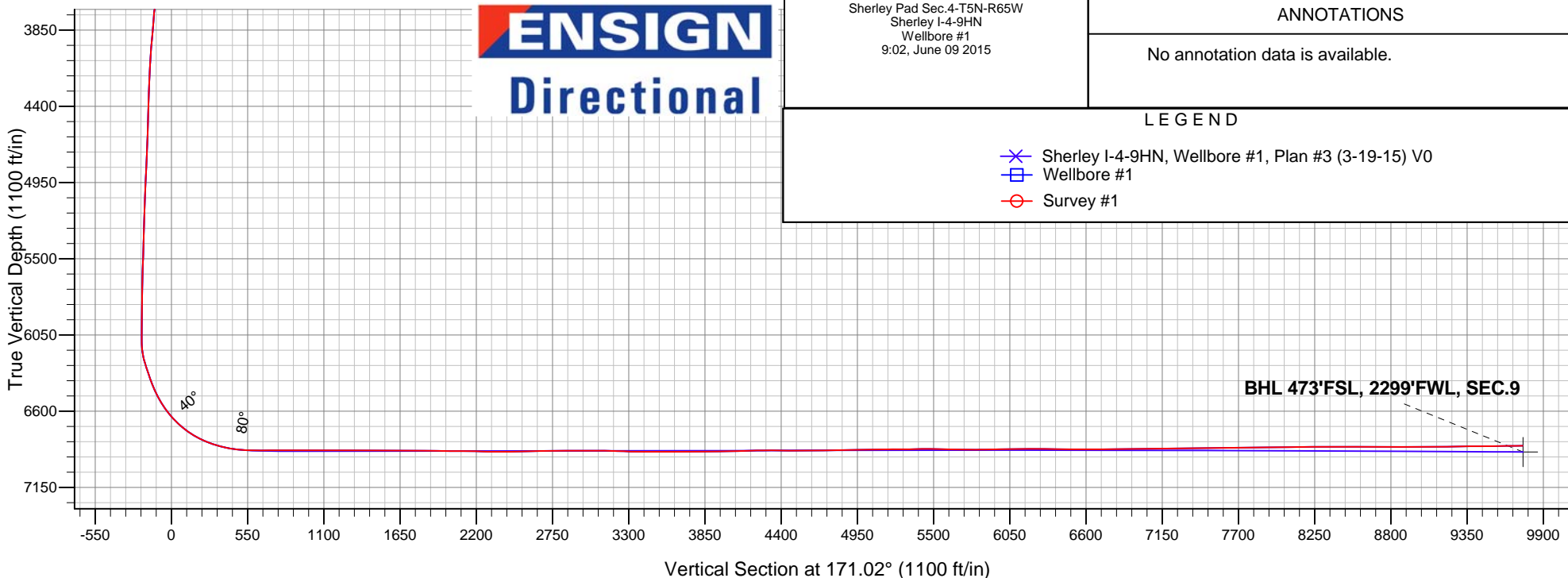
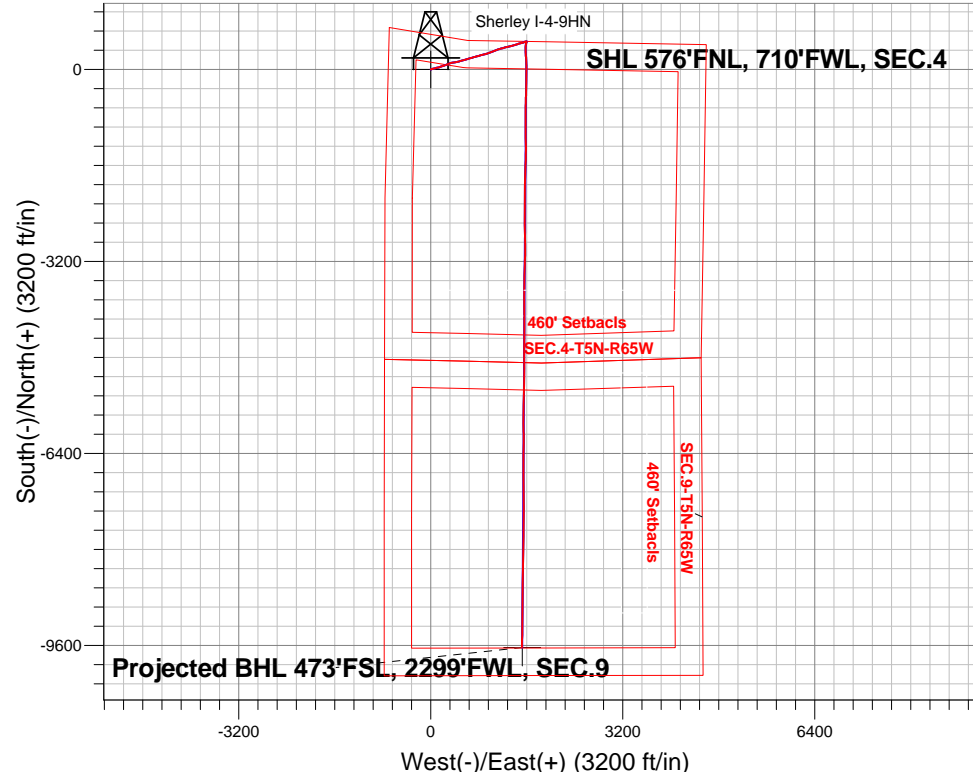
Ground Elevation: 4640.8

+N/-S	+E/-W	Northing	Easting	Latitude	Longitude	Slot
0.0	0.0	1402088.32	3229602.26	40.434203	-104.675178	
RKB -25' WELL @ 4665.8ft (RKB -25')						

FINAL SURVEY

Projected Bottom Hole Location
16915'MD 6850'TVD 9631'S & 1521'E of SHL
90.5 degree Incl @ 179.9 degree AZM

South(-)/North(+) (3200 ft/in)



ENSIGN
Directional

Sherley Pad Sec.4-T5N-R65W
Sherley I-4-9HN
Wellbore #1
9:02, June 09 2015

ANNOTATIONS

No annotation data is available.

LEGEND

- Sherley I-4-9HN, Wellbore #1, Plan #3 (3-19-15) V0
- Wellbore #1
- Survey #1



Bayswater Exploration & Production, LLC

SEC.4-T5N-R65W

Sherley Pad Sec.4-T5N-R65W

Sherley I-4-9HN

Wellbore #1

Survey: Survey #1

Standard Survey Report

06 July, 2015



BAYSWATER
EXPLORATION & PRODUCTION, LLC

Company:	Bayswater Exploration & Production, LLC	Local Co-ordinate Reference:	Well Sherley I-4-9HN
Project:	SEC.4-T5N-R65W	TVD Reference:	WELL @ 4665.8ft (RKB -25')
Site:	Sherley Pad Sec.4-T5N-R65W	MD Reference:	WELL @ 4665.8ft (RKB -25')
Well:	Sherley I-4-9HN	North Reference:	True
Wellbore:	Wellbore #1	Survey Calculation Method:	Minimum Curvature
Design:	Wellbore #1	Database:	EDMNEW

Project	SEC.4-T5N-R65W, Weld County, Colorado		
Map System:	US State Plane 1983	System Datum:	Mean Sea Level
Geo Datum:	North American Datum 1983		Using Well Reference Point
Map Zone:	Colorado Northern Zone		Using geodetic scale factor

Site	Sherley Pad Sec.4-T5N-R65W		
Site Position:		Northing:	1,402,207.92 ft
From:	Lat/Long	Easting:	3,229,612.00 ft
Position Uncertainty:	0.0 ft	Slot Radius:	"
		Latitude:	40° 26' 4.312 N
		Longitude:	104° 40' 30.500 W
		Grid Convergence:	0.53 °

Well	Sherley I-4-9HN		
Well Position	+N/-S	0.0 ft	Northing:
	+E/-W	0.0 ft	Easting:
Position Uncertainty	0.0 ft	Wellhead Elevation:	ft
		Latitude:	40° 26' 3.131 N
		Longitude:	104° 40' 30.641 W
		Ground Level:	4,640.8 ft

Wellbore	Wellbore #1		
Magnetics	Model Name	Sample Date	Declination (°)
	IGRF2010	3/19/2015	8.31
			Dip Angle (°)
			66.96
			Field Strength (nT)
			52,764

Design	Wellbore #1		
Audit Notes:			
Version:	1.0	Phase:	ACTUAL
		Tie On Depth:	0.0
Vertical Section:	Depth From (TVD) (ft)	+N/-S (ft)	+E/-W (ft)
	0.0	0.0	0.0
			Direction (°)
			171.02

Survey Program	Date	6/9/2015		
From (ft)	To (ft)	Survey (Wellbore)	Tool Name	Description
160.0	16,915.0	Survey #1 (Wellbore #1)	MWD	MWD - Standard

Survey										
Measured Depth (ft)	Inclination (°)	Azimuth (°)	Vertical Depth (ft)	+N/-S (ft)	+E/-W (ft)	Vertical Section (ft)	Dogleg Rate (°/100ft)	Build Rate (°/100ft)	Turn Rate (°/100ft)	
0.0	0.00	0.00	0.0	0.0	0.0	0.0	0.00	0.00	0.00	
1.0	0.00	11.50	1.0	0.0	0.0	0.0	0.25	0.25	0.00	
SHL 576'FNL, 710'FWL, SEC.4										
160.0	0.40	11.50	160.0	0.5	0.1	-0.5	0.25	0.25	0.00	
251.0	0.40	10.80	251.0	1.2	0.2	-1.1	0.01	0.00	-0.77	
343.0	0.80	34.20	343.0	2.0	0.7	-1.9	0.50	0.43	25.43	
434.0	1.50	72.10	434.0	2.9	2.1	-2.5	1.10	0.77	41.65	
526.0	3.10	84.10	525.9	3.5	5.8	-2.6	1.81	1.74	13.04	
618.0	5.20	74.40	617.7	4.9	12.3	-2.9	2.40	2.28	-10.54	
709.0	7.00	78.10	708.1	7.2	21.7	-3.7	2.02	1.98	4.07	
785.0	8.50	79.30	783.4	9.2	31.7	-4.1	1.99	1.97	1.58	
916.0	9.60	76.00	912.8	13.6	51.8	-5.3	0.93	0.84	-2.52	
1,011.0	12.00	72.30	1,006.1	18.5	68.9	-7.5	2.63	2.53	-3.89	

Company:	Bayswater Exploration & Production, LLC	Local Co-ordinate Reference:	Well Sherley I-4-9HN
Project:	SEC.4-T5N-R65W	TVD Reference:	WELL @ 4665.8ft (RKB -25')
Site:	Sherley Pad Sec.4-T5N-R65W	MD Reference:	WELL @ 4665.8ft (RKB -25')
Well:	Sherley I-4-9HN	North Reference:	True
Wellbore:	Wellbore #1	Survey Calculation Method:	Minimum Curvature
Design:	Wellbore #1	Database:	EDMNEW

Survey

Measured Depth (ft)	Inclination (°)	Azimuth (°)	Vertical Depth (ft)	+N/-S (ft)	+E/-W (ft)	Vertical Section (ft)	Dogleg Rate (°/100ft)	Build Rate (°/100ft)	Turn Rate (°/100ft)
1,105.0	13.60	76.90	1,097.8	24.0	89.0	-9.8	2.02	1.70	4.89
1,197.0	15.20	76.70	1,186.9	29.2	111.3	-11.5	1.74	1.74	-0.22
1,288.0	17.40	74.80	1,274.2	35.5	136.0	-13.9	2.49	2.42	-2.09
1,380.0	19.60	73.30	1,361.5	43.6	164.1	-17.4	2.45	2.39	-1.63
1,472.0	17.90	67.20	1,448.6	53.5	191.9	-22.9	2.82	-1.85	-6.63
1,564.0	18.30	68.30	1,536.0	64.3	218.3	-29.4	0.57	0.43	1.20
1,654.0	18.40	69.10	1,621.5	74.6	244.7	-35.5	0.30	0.11	0.89
1,745.0	20.00	71.80	1,707.4	84.6	272.9	-40.9	2.01	1.76	2.97
1,837.0	20.00	69.50	1,793.8	95.0	302.6	-46.6	0.86	0.00	-2.50
1,929.0	17.90	70.40	1,880.9	105.3	330.7	-52.4	2.30	-2.28	0.98
2,020.0	19.50	81.10	1,967.1	112.3	358.9	-54.9	4.15	1.76	11.76
2,112.0	21.30	82.30	2,053.3	116.9	390.6	-54.5	2.01	1.96	1.30
2,204.0	19.60	79.00	2,139.5	122.1	422.3	-54.7	2.23	-1.85	-3.59
2,296.0	20.80	76.00	2,225.8	129.0	453.3	-56.7	1.72	1.30	-3.26
2,388.0	19.60	70.20	2,312.2	138.2	483.7	-61.0	2.54	-1.30	-6.30
2,483.0	21.10	76.50	2,401.3	147.6	515.3	-65.3	2.79	1.58	6.63
2,576.0	20.40	72.80	2,488.2	156.3	547.1	-69.0	1.60	-0.75	-3.98
2,669.0	20.50	75.60	2,575.4	165.1	578.3	-72.8	1.06	0.11	3.01
2,763.0	21.20	75.30	2,663.2	173.5	610.7	-76.1	0.75	0.74	-0.32
2,856.0	22.10	74.40	2,749.7	182.5	643.8	-79.8	1.03	0.97	-0.97
2,951.0	20.80	71.90	2,838.1	192.5	677.1	-84.5	1.67	-1.37	-2.63
3,045.0	18.70	74.10	2,926.6	201.9	707.4	-89.0	2.37	-2.23	2.34
3,136.0	20.30	77.70	3,012.3	209.2	736.9	-91.6	2.20	1.76	3.96
3,230.0	19.20	75.10	3,100.8	216.7	767.8	-94.2	1.50	-1.17	-2.77
3,324.0	19.30	73.00	3,189.6	225.2	797.6	-97.9	0.74	0.11	-2.23
3,417.0	18.90	71.60	3,277.4	234.4	826.5	-102.5	0.65	-0.43	-1.51
3,511.0	19.60	77.20	3,366.2	242.7	856.4	-106.1	2.10	0.74	5.96
3,605.0	19.20	77.70	3,454.8	249.5	886.8	-108.0	0.46	-0.43	0.53
3,698.0	19.70	72.10	3,542.5	257.6	916.7	-111.3	2.08	0.54	-6.02
3,791.0	19.70	68.80	3,630.1	268.1	946.2	-117.1	1.20	0.00	-3.55
3,886.0	21.50	69.80	3,719.0	279.9	977.5	-123.9	1.93	1.89	1.05
3,980.0	22.20	69.30	3,806.3	292.1	1,010.3	-130.8	0.77	0.74	-0.53
4,074.0	22.80	68.10	3,893.1	305.2	1,043.8	-138.5	0.80	0.64	-1.28
4,168.0	22.10	70.00	3,980.0	318.0	1,077.3	-146.0	1.07	-0.74	2.02
4,262.0	20.50	70.00	4,067.6	329.7	1,109.4	-152.5	1.70	-1.70	0.00
4,357.0	20.80	75.30	4,156.5	339.7	1,141.3	-157.3	1.99	0.32	5.58
4,451.0	18.80	74.60	4,244.9	347.9	1,172.1	-160.7	2.14	-2.13	-0.74
4,545.0	19.20	75.60	4,333.8	355.8	1,201.7	-163.9	0.55	0.43	1.06
4,639.0	20.60	76.50	4,422.2	363.5	1,232.7	-166.6	1.52	1.49	0.96
4,732.0	19.30	75.60	4,509.6	371.1	1,263.5	-169.4	1.44	-1.40	-0.97
4,826.0	19.10	77.00	4,598.4	378.5	1,293.6	-171.9	0.53	-0.21	1.49
4,920.0	18.80	75.50	4,687.3	385.7	1,323.2	-174.4	0.61	-0.32	-1.60
5,014.0	19.60	73.30	4,776.0	394.0	1,353.0	-178.0	1.15	0.85	-2.34
5,107.0	19.30	73.20	4,863.7	403.0	1,382.6	-182.2	0.32	-0.32	-0.11
5,201.0	18.70	72.30	4,952.6	412.0	1,411.8	-186.6	0.71	-0.64	-0.96
5,296.0	18.00	74.40	5,042.8	420.6	1,440.5	-190.6	1.01	-0.74	2.21
5,389.0	14.90	73.20	5,132.0	427.9	1,465.8	-193.9	3.35	-3.33	-1.29
5,484.0	14.20	73.70	5,223.9	434.7	1,488.7	-197.0	0.75	-0.74	0.53
5,578.0	15.40	77.70	5,314.8	440.6	1,511.9	-199.2	1.68	1.28	4.26
5,672.0	11.70	73.50	5,406.2	446.0	1,533.3	-201.2	4.07	-3.94	-4.47
5,766.0	9.90	65.10	5,498.5	452.1	1,549.7	-204.7	2.54	-1.91	-8.94
5,859.0	7.40	68.60	5,590.4	457.7	1,562.6	-208.1	2.75	-2.69	3.76
5,953.0	6.70	74.60	5,683.7	461.3	1,573.5	-210.1	1.08	-0.74	6.38
6,048.0	5.60	70.00	5,778.2	464.4	1,583.2	-211.6	1.27	-1.16	-4.84

Company:	Bayswater Exploration & Production, LLC	Local Co-ordinate Reference:	Well Sherley I-4-9HN
Project:	SEC.4-T5N-R65W	TVD Reference:	WELL @ 4665.8ft (RKB -25')
Site:	Sherley Pad Sec.4-T5N-R65W	MD Reference:	WELL @ 4665.8ft (RKB -25')
Well:	Sherley I-4-9HN	North Reference:	True
Wellbore:	Wellbore #1	Survey Calculation Method:	Minimum Curvature
Design:	Wellbore #1	Database:	EDMNEW

Survey

Measured Depth (ft)	Inclination (°)	Azimuth (°)	Vertical Depth (ft)	+N/-S (ft)	+E/-W (ft)	Vertical Section (ft)	Dogleg Rate (°/100ft)	Build Rate (°/100ft)	Turn Rate (°/100ft)
6,141.0	4.00	79.10	5,870.9	466.5	1,590.6	-212.5	1.90	-1.72	9.78
6,235.0	1.40	38.00	5,964.8	468.1	1,594.6	-213.4	3.28	-2.77	-43.72
6,328.0	1.20	32.60	6,057.7	469.8	1,595.8	-214.9	0.25	-0.22	-5.81
6,423.0	5.50	188.00	6,152.6	466.1	1,595.7	-211.3	6.96	4.53	163.58
6,470.0	12.10	196.70	6,199.0	459.2	1,594.0	-204.7	14.29	14.04	18.51
6,516.0	17.90	192.50	6,243.4	447.6	1,591.0	-193.8	12.82	12.61	-9.13
6,563.0	19.20	189.70	6,288.0	433.0	1,588.2	-179.7	3.35	2.77	-5.96
6,609.0	19.70	190.60	6,331.4	417.9	1,585.5	-165.3	1.27	1.09	1.96
6,656.0	20.60	187.80	6,375.5	401.9	1,582.9	-149.9	2.81	1.91	-5.96
6,703.0	22.30	181.60	6,419.3	384.8	1,581.5	-133.2	6.02	3.62	-13.19
6,750.0	25.90	181.50	6,462.1	365.6	1,581.0	-114.3	7.66	7.66	-0.21
6,796.0	28.60	180.90	6,503.0	344.6	1,580.6	-93.6	5.90	5.87	-1.30
6,843.0	31.60	180.80	6,543.7	321.0	1,580.2	-70.4	6.38	6.38	-0.21
6,890.0	35.80	177.60	6,582.8	294.9	1,580.6	-44.6	9.70	8.94	-6.81
6,937.0	39.70	176.40	6,620.0	266.2	1,582.1	-16.0	8.44	8.30	-2.55
6,984.0	42.90	176.40	6,655.3	235.2	1,584.1	14.9	6.81	6.81	0.00
7,031.0	46.70	178.10	6,688.6	202.2	1,585.7	47.8	8.48	8.09	3.62
7,078.0	50.80	176.40	6,719.6	166.9	1,587.4	82.9	9.14	8.72	-3.62
7,125.0	54.70	177.20	6,748.0	129.5	1,589.5	120.1	8.41	8.30	1.70
7,172.0	58.70	177.90	6,773.8	90.3	1,591.1	159.2	8.60	8.51	1.49
7,219.0	63.40	179.00	6,796.6	49.2	1,592.2	199.9	10.21	10.00	2.34
7,266.0	67.40	179.70	6,816.1	6.5	1,592.7	242.2	8.62	8.51	1.49
7,313.0	71.10	180.40	6,832.8	-37.5	1,592.7	285.6	7.99	7.87	1.49
7,360.0	73.70	180.90	6,847.0	-82.3	1,592.2	329.8	5.62	5.53	1.06
7,407.0	76.40	181.10	6,859.1	-127.7	1,591.4	374.5	5.76	5.74	0.43
7,453.0	79.50	180.90	6,868.7	-172.6	1,590.6	418.8	6.75	6.74	-0.43
7,527.0	85.70	181.30	6,878.2	-246.0	1,589.2	491.0	8.40	8.38	0.54
7,536.3	85.98	181.24	6,878.9	-255.2	1,589.0	500.1	3.10	3.02	-0.70
Landing Pt. (I-4-9HN)									
7,656.0	89.60	180.40	6,883.5	-374.8	1,587.3	618.0	3.10	3.02	-0.70
7,750.0	90.70	182.20	6,883.3	-468.8	1,585.1	710.5	2.24	1.17	1.91
7,845.0	90.00	181.50	6,882.7	-563.7	1,582.1	803.8	1.04	-0.74	-0.74
7,939.0	89.30	180.20	6,883.3	-657.7	1,580.7	896.4	1.57	-0.74	-1.38
8,033.0	90.50	180.80	6,883.4	-751.7	1,579.9	989.1	1.43	1.28	0.64
8,127.0	90.00	178.80	6,883.0	-845.7	1,580.2	1,082.0	2.19	-0.53	-2.13
8,221.0	90.00	179.50	6,883.0	-939.7	1,581.6	1,175.0	0.74	0.00	0.74
8,315.0	90.00	181.10	6,883.0	-1,033.7	1,581.1	1,267.8	1.70	0.00	1.70
8,409.0	89.30	178.10	6,883.6	-1,127.7	1,581.7	1,360.7	3.28	-0.74	-3.19
8,503.0	90.40	179.30	6,883.9	-1,221.6	1,583.9	1,453.9	1.73	1.17	1.28
8,597.0	89.00	179.30	6,884.3	-1,315.6	1,585.0	1,546.9	1.49	-1.49	0.00
8,692.0	90.00	180.90	6,885.2	-1,410.6	1,584.9	1,640.7	1.99	1.05	1.68
8,786.0	90.70	182.50	6,884.6	-1,504.6	1,582.1	1,733.1	1.86	0.74	1.70
8,880.0	89.30	182.20	6,884.6	-1,598.5	1,578.2	1,825.3	1.52	-1.49	-0.32
8,974.0	88.60	182.30	6,886.3	-1,692.4	1,574.5	1,917.4	0.75	-0.74	0.11
9,068.0	89.20	182.00	6,888.1	-1,786.3	1,571.0	2,009.6	0.71	0.64	-0.32
9,162.0	90.00	181.50	6,888.8	-1,880.3	1,568.1	2,102.0	1.00	0.85	-0.53
9,256.0	89.20	180.80	6,889.4	-1,974.3	1,566.2	2,194.5	1.13	-0.85	-0.74
9,350.0	87.90	179.00	6,891.8	-2,068.2	1,566.4	2,287.4	2.36	-1.38	-1.91
9,444.0	89.80	179.30	6,893.7	-2,162.2	1,567.8	2,380.4	2.05	2.02	0.32
9,538.0	91.20	181.30	6,892.9	-2,256.2	1,567.3	2,473.2	2.60	1.49	2.13
9,633.0	92.20	181.30	6,890.1	-2,351.1	1,565.1	2,566.6	1.05	1.05	0.00
9,727.0	91.10	180.00	6,887.4	-2,445.1	1,564.1	2,659.2	1.81	-1.17	-1.38
9,822.0	90.70	180.20	6,885.9	-2,540.0	1,563.9	2,753.0	0.47	-0.42	0.21
9,916.0	90.30	179.00	6,885.0	-2,634.0	1,564.6	2,846.0	1.35	-0.43	-1.28

Company:	Bayswater Exploration & Production, LLC	Local Co-ordinate Reference:	Well Sherley I-4-9HN
Project:	SEC.4-T5N-R65W	TVD Reference:	WELL @ 4665.8ft (RKB -25')
Site:	Sherley Pad Sec.4-T5N-R65W	MD Reference:	WELL @ 4665.8ft (RKB -25')
Well:	Sherley I-4-9HN	North Reference:	True
Wellbore:	Wellbore #1	Survey Calculation Method:	Minimum Curvature
Design:	Wellbore #1	Database:	EDMNEW

Survey

Measured Depth (ft)	Inclination (°)	Azimuth (°)	Vertical Depth (ft)	+N/-S (ft)	+E/-W (ft)	Vertical Section (ft)	Dogleg Rate (°/100ft)	Build Rate (°/100ft)	Turn Rate (°/100ft)
10,010.0	90.00	178.30	6,884.8	-2,728.0	1,566.8	2,939.1	0.81	-0.32	-0.74
10,104.0	90.30	178.60	6,884.6	-2,822.0	1,569.3	3,032.3	0.45	0.32	0.32
10,199.0	89.00	179.30	6,885.1	-2,917.0	1,571.1	3,126.4	1.55	-1.37	0.74
10,293.0	87.40	180.80	6,888.1	-3,010.9	1,571.0	3,219.2	2.33	-1.70	1.60
10,385.0	88.50	181.10	6,891.4	-3,102.8	1,569.5	3,309.8	1.24	1.20	0.33
10,477.0	89.50	181.10	6,893.0	-3,194.8	1,567.7	3,400.3	1.09	1.09	0.00
10,568.0	90.30	182.20	6,893.1	-3,285.8	1,565.1	3,489.8	1.49	0.88	1.21
10,660.0	90.20	181.60	6,892.7	-3,377.7	1,562.0	3,580.1	0.66	-0.11	-0.65
10,752.0	90.10	181.10	6,892.5	-3,469.7	1,559.9	3,670.6	0.55	-0.11	-0.54
10,843.0	90.10	180.80	6,892.3	-3,560.7	1,558.4	3,760.3	0.33	0.00	-0.33
10,935.0	90.60	181.30	6,891.8	-3,652.6	1,556.7	3,850.9	0.77	0.54	0.54
11,027.0	90.50	181.10	6,890.9	-3,744.6	1,554.7	3,941.4	0.24	-0.11	-0.22
11,117.0	91.40	180.20	6,889.4	-3,834.6	1,553.7	4,030.1	1.41	1.00	-1.00
11,178.0	91.40	179.90	6,887.9	-3,895.6	1,553.7	4,090.4	0.49	0.00	-0.49
11,270.0	91.70	179.20	6,885.4	-3,987.5	1,554.4	4,181.3	0.83	0.33	-0.76
11,361.0	90.50	179.30	6,883.7	-4,078.5	1,555.6	4,271.3	1.32	-1.32	0.11
11,422.0	90.40	179.00	6,883.2	-4,139.5	1,556.5	4,331.7	0.52	-0.16	-0.49
11,514.0	89.30	180.40	6,883.4	-4,231.5	1,557.0	4,422.7	1.94	-1.20	1.52
11,581.8	89.30	180.03	6,884.3	-4,299.3	1,556.7	4,489.6	0.55	0.00	-0.55
WP #1 (I-4-9HN)									
11,605.0	89.30	179.90	6,884.6	-4,322.5	1,556.7	4,512.5	0.55	0.00	-0.55
11,697.0	90.30	179.50	6,884.9	-4,414.5	1,557.2	4,603.5	1.17	1.09	-0.43
11,788.0	90.90	179.30	6,883.9	-4,505.5	1,558.2	4,693.5	0.70	0.66	-0.22
11,880.0	91.40	181.10	6,882.1	-4,597.5	1,557.8	4,784.3	2.03	0.54	1.96
11,971.0	91.20	180.90	6,880.0	-4,688.4	1,556.3	4,873.9	0.31	-0.22	-0.22
12,062.0	90.70	180.40	6,878.5	-4,779.4	1,555.2	4,963.6	0.78	-0.55	-0.55
12,155.0	90.70	179.30	6,877.4	-4,872.4	1,555.5	5,055.5	1.18	0.00	-1.18
12,247.0	90.30	180.90	6,876.6	-4,964.4	1,555.3	5,146.3	1.79	-0.43	1.74
12,338.0	90.70	180.40	6,875.8	-5,055.4	1,554.3	5,236.0	0.70	0.44	-0.55
12,429.0	90.70	180.00	6,874.7	-5,146.4	1,554.0	5,325.9	0.44	0.00	-0.44
12,521.0	90.80	179.90	6,873.5	-5,238.4	1,554.0	5,416.7	0.15	0.11	-0.11
12,612.0	89.30	181.50	6,873.4	-5,329.4	1,552.9	5,506.4	2.41	-1.65	1.76
12,704.0	88.50	180.60	6,875.1	-5,421.3	1,551.2	5,597.0	1.31	-0.87	-0.98
12,795.0	89.40	182.00	6,876.8	-5,512.3	1,549.2	5,686.5	1.83	0.99	1.54
12,888.0	89.30	181.50	6,877.9	-5,605.2	1,546.3	5,777.9	0.55	-0.11	-0.54
12,980.0	91.50	181.10	6,877.2	-5,697.2	1,544.2	5,868.4	2.43	2.39	-0.43
13,072.0	91.30	180.20	6,875.0	-5,789.2	1,543.2	5,959.1	1.00	-0.22	-0.98
13,135.0	90.60	180.40	6,873.9	-5,852.2	1,542.9	6,021.3	1.16	-1.11	0.32
13,229.0	90.40	179.00	6,873.1	-5,946.1	1,543.4	6,114.2	1.50	-0.21	-1.49
13,323.0	90.20	177.90	6,872.6	-6,040.1	1,545.9	6,207.4	1.19	-0.21	-1.17
13,417.0	89.60	180.40	6,872.8	-6,134.1	1,547.3	6,300.4	2.74	-0.64	2.66
13,511.0	89.20	179.70	6,873.8	-6,228.1	1,547.2	6,393.3	0.86	-0.43	-0.74
13,605.0	89.30	180.20	6,875.0	-6,322.1	1,547.3	6,486.1	0.54	0.11	0.53
13,699.0	90.20	181.10	6,875.4	-6,416.1	1,546.2	6,578.8	1.35	0.96	0.96
13,793.0	89.70	180.80	6,875.5	-6,510.1	1,544.7	6,671.4	0.62	-0.53	-0.32
13,888.0	91.10	180.90	6,874.8	-6,605.0	1,543.3	6,765.0	1.48	1.47	0.11
13,947.0	91.10	180.33	6,873.7	-6,664.1	1,542.6	6,823.2	0.96	0.00	-0.96
WP #2 (I-4-9HN)									
13,982.0	91.10	180.00	6,873.0	-6,699.0	1,542.5	6,857.7	0.96	0.00	-0.96
14,076.0	90.70	180.00	6,871.5	-6,793.0	1,542.5	6,950.5	0.43	-0.43	0.00
14,170.0	89.90	178.50	6,871.0	-6,887.0	1,543.8	7,043.5	1.81	-0.85	-1.60
14,264.0	90.70	179.00	6,870.6	-6,981.0	1,545.8	7,136.7	1.00	0.85	0.53
14,360.0	90.70	178.80	6,869.4	-7,076.9	1,547.7	7,231.8	0.21	0.00	-0.21
14,454.0	90.70	179.90	6,868.2	-7,170.9	1,548.7	7,324.8	1.17	0.00	1.17

Company:	Bayswater Exploration & Production, LLC	Local Co-ordinate Reference:	Well Sherley I-4-9HN
Project:	SEC.4-T5N-R65W	TVD Reference:	WELL @ 4665.8ft (RKB -25')
Site:	Sherley Pad Sec.4-T5N-R65W	MD Reference:	WELL @ 4665.8ft (RKB -25')
Well:	Sherley I-4-9HN	North Reference:	True
Wellbore:	Wellbore #1	Survey Calculation Method:	Minimum Curvature
Design:	Wellbore #1	Database:	EDMNEW

Survey

Measured Depth (ft)	Inclination (°)	Azimuth (°)	Vertical Depth (ft)	+N/-S (ft)	+E/-W (ft)	Vertical Section (ft)	Dogleg Rate (°/100ft)	Build Rate (°/100ft)	Turn Rate (°/100ft)
14,548.0	90.90	180.80	6,866.9	-7,264.9	1,548.1	7,417.5	0.98	0.21	0.96
14,642.0	90.50	179.50	6,865.8	-7,358.9	1,547.9	7,510.3	1.45	-0.43	-1.38
14,735.0	90.10	180.20	6,865.3	-7,451.9	1,548.1	7,602.2	0.87	-0.43	0.75
14,830.0	91.30	180.60	6,864.1	-7,546.9	1,547.5	7,695.9	1.33	1.26	0.42
14,924.0	90.70	180.90	6,862.5	-7,640.9	1,546.3	7,788.6	0.71	-0.64	0.32
15,018.0	90.30	179.30	6,861.7	-7,734.9	1,546.1	7,881.4	1.75	-0.43	-1.70
15,112.0	90.30	180.40	6,861.2	-7,828.9	1,546.3	7,974.3	1.17	0.00	1.17
15,206.0	91.20	180.90	6,859.9	-7,922.8	1,545.3	8,066.9	1.10	0.96	0.53
15,301.0	90.80	182.30	6,858.3	-8,017.8	1,542.6	8,160.3	1.53	-0.42	1.47
15,395.0	90.70	182.00	6,857.1	-8,111.7	1,539.1	8,252.5	0.34	-0.11	-0.32
15,489.0	90.00	181.80	6,856.5	-8,205.7	1,536.0	8,344.8	0.77	-0.74	-0.21
15,584.0	89.40	180.40	6,857.0	-8,300.6	1,534.1	8,438.4	1.60	-0.63	-1.47
15,677.0	90.00	180.80	6,857.5	-8,393.6	1,533.2	8,530.1	0.78	0.65	0.43
15,771.0	90.10	181.10	6,857.4	-8,487.6	1,531.6	8,622.7	0.34	0.11	0.32
15,865.0	89.80	180.80	6,857.5	-8,581.6	1,530.1	8,715.2	0.45	-0.32	-0.32
15,960.0	90.00	180.60	6,857.6	-8,676.6	1,528.9	8,808.9	0.30	0.21	-0.21
16,054.0	90.30	180.00	6,857.4	-8,770.6	1,528.4	8,901.7	0.71	0.32	-0.64
16,148.0	89.70	179.50	6,857.4	-8,864.6	1,528.8	8,994.6	0.83	-0.64	-0.53
16,243.0	90.40	180.20	6,857.3	-8,959.6	1,529.1	9,088.4	1.04	0.74	0.74
16,337.0	90.90	181.10	6,856.2	-9,053.6	1,528.0	9,181.1	1.10	0.53	0.96
16,431.0	90.70	180.40	6,854.9	-9,147.6	1,526.8	9,273.8	0.77	-0.21	-0.74
16,525.0	90.80	181.50	6,853.7	-9,241.5	1,525.2	9,366.3	1.17	0.11	1.17
16,620.0	90.50	181.30	6,852.6	-9,336.5	1,522.9	9,459.8	0.38	-0.32	-0.21
16,714.0	90.40	180.60	6,851.9	-9,430.5	1,521.3	9,552.4	0.75	-0.11	-0.74
16,808.0	90.60	179.90	6,851.1	-9,524.5	1,520.9	9,645.1	0.77	0.21	-0.74
16,858.0	90.50	179.90	6,850.6	-9,574.5	1,521.0	9,694.5	0.20	-0.20	0.00
16,915.0	90.50	179.90	6,850.1	-9,631.5	1,521.1	9,750.9	0.00	0.00	0.00

BHL 470'FSL, 2300'FWL, SEC.9

Design Targets

Target Name	Dip Angle (°)	Dip Dir. (°)	TVD (ft)	+N/-S (ft)	+E/-W (ft)	Northing (ft)	Easting (ft)	Latitude	Longitude
SHL 576'FNL, 710'FW - hit/miss target - Shape - Point	0.00	0.00	1.0	0.0	0.0	1,402,088.33	3,229,602.26	40° 26' 3.131 N	104° 40' 30.641 W
BHL 470'FSL, 2300'FW - survey hits target center - Point	0.00	0.00	6,894.8	-9,634.2	1,522.5	1,392,469.08	3,231,214.24	40° 24' 27.929 N	104° 40' 10.960 W
- survey misses target center by 44.8ft at 16915.0ft MD (6850.1 TVD, -9631.5 N, 1521.1 E)									

Checked By: _____ Approved By: _____ Date: _____