

# Bayswater Exploration & Production, LLC

Well Name: **Sherley H-4-9HN**

Surface Location: Sherley Pad Sec.4-T5N-R65W

North American Datum 1983, US State Plane 1983, Colorado Northern Zone

Ground Elevation: 4641.1

+N/-S	+E/-W	Northing	Easting	Latitude	Longitude	Slot
0.0	0.0	1402103.27	3229603.79	40.434244	-104.675172	

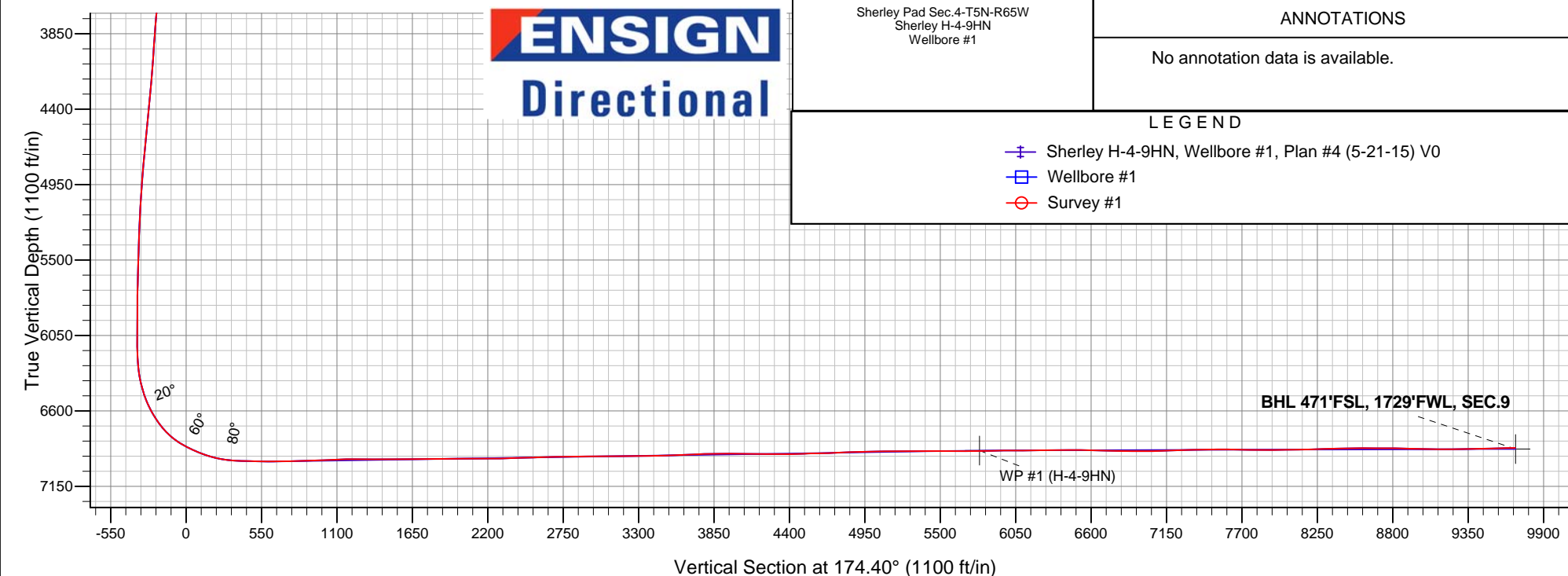
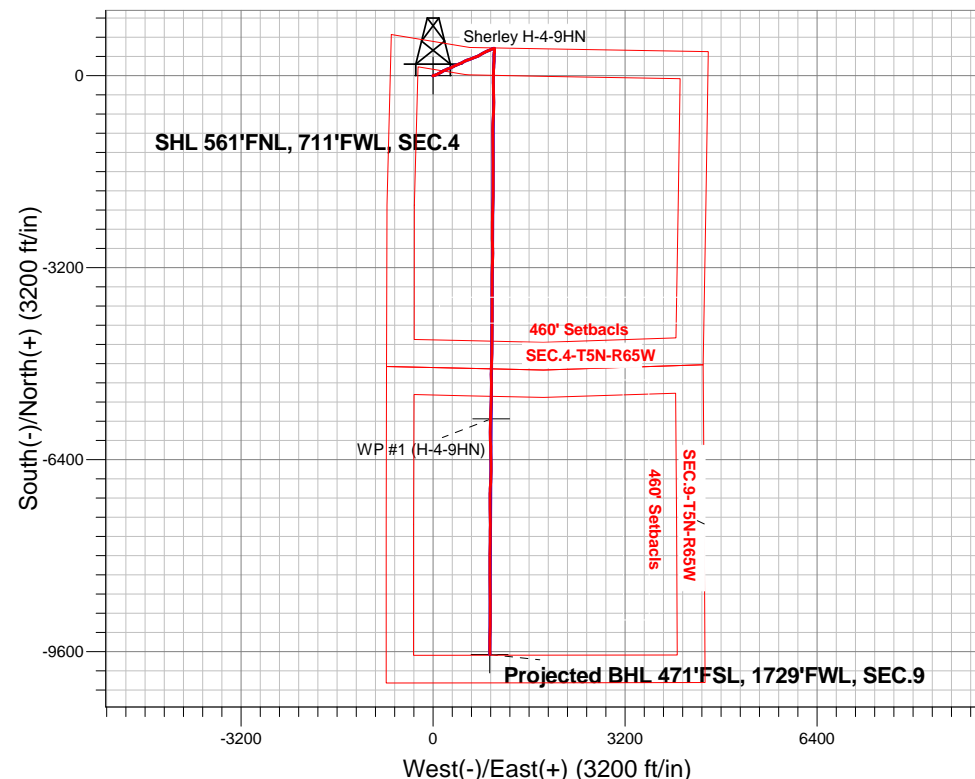
RKB - 25' WELL @ 4666.1ft (RKB - 25')

# FINAL SURVEY

### Projected Bottom Hole Location

**16890'MD 6869'TVD 9648'S & 950'W of SHL**

**91.8 degree Incl @ 179.1 degree AZM**





# **Bayswater Exploration & Production, LLC**

**SEC.4-T5N-R65W**

**Sherley Pad Sec.4-T5N-R65W**

**Sherley H-4-9HN**

**Wellbore #1**

**Survey: Survey #1**

## **Standard Survey Report**

**06 July, 2015**



**BAYSWATER**  
**EXPLORATION & PRODUCTION, LLC**

<b>Company:</b>	Bayswater Exploration & Production, LLC	<b>Local Co-ordinate Reference:</b>	Well Sherley H-4-9HN
<b>Project:</b>	SEC.4-T5N-R65W	<b>TVD Reference:</b>	WELL @ 4666.1ft (RKB - 25')
<b>Site:</b>	Sherley Pad Sec.4-T5N-R65W	<b>MD Reference:</b>	WELL @ 4666.1ft (RKB - 25')
<b>Well:</b>	Sherley H-4-9HN	<b>North Reference:</b>	True
<b>Wellbore:</b>	Wellbore #1	<b>Survey Calculation Method:</b>	Minimum Curvature
<b>Design:</b>	Wellbore #1	<b>Database:</b>	EDMNEW

<b>Project</b>	SEC.4-T5N-R65W, Weld County, Colorado		
<b>Map System:</b>	US State Plane 1983	<b>System Datum:</b>	Mean Sea Level
<b>Geo Datum:</b>	North American Datum 1983		Using Well Reference Point
<b>Map Zone:</b>	Colorado Northern Zone		Using geodetic scale factor

<b>Site</b>	Sherley Pad Sec.4-T5N-R65W		
<b>Site Position:</b>		<b>Northing:</b>	1,402,207.92 ft
<b>From:</b>	Lat/Long	<b>Easting:</b>	3,229,612.00 ft
<b>Position Uncertainty:</b>	0.0 ft	<b>Slot Radius:</b>	"
		<b>Latitude:</b>	40° 26' 4.312 N
		<b>Longitude:</b>	104° 40' 30.500 W
		<b>Grid Convergence:</b>	0.53 °

<b>Well</b>	Sherley H-4-9HN		
<b>Well Position</b>	<b>+N/-S</b>	0.0 ft	<b>Northing:</b>
	<b>+E/-W</b>	0.0 ft	<b>Easting:</b>
<b>Position Uncertainty</b>		0.0 ft	<b>Wellhead Elevation:</b>
			ft
			<b>Latitude:</b>
			40° 26' 3.278 N
			<b>Longitude:</b>
			104° 40' 30.619 W
			<b>Ground Level:</b>
			4,641.1 ft

<b>Wellbore</b>	Wellbore #1				
<b>Magnetics</b>	<b>Model Name</b>	<b>Sample Date</b>	<b>Declination (°)</b>	<b>Dip Angle (°)</b>	<b>Field Strength (nT)</b>
	IGRF2010	5/21/2015	8.29	66.96	52,746

<b>Design</b>	Wellbore #1				
<b>Audit Notes:</b>					
<b>Version:</b>	1.0	<b>Phase:</b>	ACTUAL	<b>Tie On Depth:</b>	0.0
<b>Vertical Section:</b>	<b>Depth From (TVD) (ft)</b>	<b>+N/-S (ft)</b>	<b>+E/-W (ft)</b>	<b>Direction (°)</b>	
	0.0	0.0	0.0	174.40	

<b>Survey Program</b>	<b>Date</b>	6/3/2015			
<b>From (ft)</b>	<b>To (ft)</b>	<b>Survey (Wellbore)</b>	<b>Tool Name</b>	<b>Description</b>	
130.0	16,890.0	Survey #1 (Wellbore #1)	MWD	MWD - Standard	

<b>Survey</b>										
<b>Measured Depth (ft)</b>	<b>Inclination (°)</b>	<b>Azimuth (°)</b>	<b>Vertical Depth (ft)</b>	<b>+N/-S (ft)</b>	<b>+E/-W (ft)</b>	<b>Vertical Section (ft)</b>	<b>Dogleg Rate (°/100ft)</b>	<b>Build Rate (°/100ft)</b>	<b>Turn Rate (°/100ft)</b>	
0.0	0.00	0.00	0.0	0.0	0.0	0.0	0.00	0.00	0.00	
1.0	0.00	199.90	1.0	0.0	0.0	0.0	0.23	0.23	0.00	
<b>SHL 561'FNL, 711'FWL, SEC.4</b>										
130.0	0.30	199.90	130.0	-0.3	-0.1	0.3	0.23	0.23	0.00	
160.0	0.50	206.20	160.0	-0.5	-0.2	0.5	0.68	0.67	21.00	
251.0	0.60	178.30	251.0	-1.3	-0.4	1.3	0.31	0.11	-30.66	
343.0	0.70	188.70	343.0	-2.4	-0.4	2.3	0.17	0.11	11.30	
434.0	0.90	181.10	434.0	-3.6	-0.5	3.6	0.25	0.22	-8.35	
526.0	0.50	112.60	526.0	-4.5	-0.2	4.5	0.93	-0.43	-74.46	
618.0	1.80	71.20	618.0	-4.2	1.6	4.3	1.59	1.41	-45.00	
709.0	3.30	72.00	708.9	-2.9	5.4	3.5	1.65	1.65	0.88	
784.0	3.90	75.50	783.7	-1.6	9.9	2.6	0.85	0.80	4.67	
916.0	4.90	69.80	915.3	1.4	19.6	0.5	0.83	0.76	-4.32	

<b>Company:</b>	Bayswater Exploration & Production, LLC	<b>Local Co-ordinate Reference:</b>	Well Sherley H-4-9HN
<b>Project:</b>	SEC.4-T5N-R65W	<b>TVD Reference:</b>	WELL @ 4666.1ft (RKB - 25')
<b>Site:</b>	Sherley Pad Sec.4-T5N-R65W	<b>MD Reference:</b>	WELL @ 4666.1ft (RKB - 25')
<b>Well:</b>	Sherley H-4-9HN	<b>North Reference:</b>	True
<b>Wellbore:</b>	Wellbore #1	<b>Survey Calculation Method:</b>	Minimum Curvature
<b>Design:</b>	Wellbore #1	<b>Database:</b>	EDMNEW

Survey										
Measured Depth (ft)	Inclination (°)	Azimuth (°)	Vertical Depth (ft)	+N/-S (ft)	+E/-W (ft)	Vertical Section (ft)	Dogleg Rate (°/100ft)	Build Rate (°/100ft)	Turn Rate (°/100ft)	
1,011.0	6.80	70.70	1,009.8	4.7	28.7	-1.9	2.00	2.00	0.95	
1,105.0	8.40	71.10	1,103.0	8.8	40.4	-4.8	1.70	1.70	0.43	
1,197.0	10.50	66.50	1,193.7	14.3	54.5	-8.9	2.42	2.28	-5.00	
1,288.0	11.80	64.60	1,283.0	21.6	70.5	-14.6	1.48	1.43	-2.09	
1,380.0	13.70	63.50	1,372.8	30.5	88.7	-21.7	2.08	2.07	-1.20	
1,472.0	14.90	62.30	1,461.9	40.8	109.0	-30.0	1.34	1.30	-1.30	
1,564.0	13.40	56.50	1,551.1	52.2	128.3	-39.4	2.24	-1.63	-6.30	
1,654.0	13.20	59.80	1,638.7	63.1	145.9	-48.6	0.87	-0.22	3.67	
1,745.0	13.60	61.60	1,727.2	73.5	164.3	-57.1	0.64	0.44	1.98	
1,837.0	14.20	65.80	1,816.5	83.2	184.1	-64.9	1.28	0.65	4.57	
1,929.0	13.80	69.10	1,905.8	91.8	204.6	-71.4	0.97	-0.43	3.59	
2,020.0	15.70	63.70	1,993.8	101.1	225.8	-78.6	2.58	2.09	-5.93	
2,112.0	15.30	69.70	2,082.5	110.8	248.4	-86.1	1.80	-0.43	6.52	
2,204.0	15.80	71.80	2,171.1	118.9	271.7	-91.9	0.82	0.54	2.28	
2,296.0	15.00	65.60	2,259.8	127.8	294.4	-98.4	1.99	-0.87	-6.74	
2,388.0	15.20	60.70	2,348.6	138.6	315.8	-107.1	1.40	0.22	-5.33	
2,483.0	14.40	60.90	2,440.5	150.4	336.9	-116.8	0.84	-0.84	0.21	
2,576.0	15.00	65.80	2,530.4	161.0	358.0	-125.3	1.48	0.65	5.27	
2,669.0	15.60	68.60	2,620.1	170.5	380.6	-132.5	1.02	0.65	3.01	
2,763.0	16.10	68.30	2,710.6	179.9	404.5	-139.6	0.54	0.53	-0.32	
2,856.0	16.20	67.50	2,799.9	189.7	428.5	-146.9	0.26	0.11	-0.86	
2,951.0	13.70	64.00	2,891.7	199.7	450.8	-154.7	2.80	-2.63	-3.68	
3,045.0	14.40	65.80	2,982.9	209.3	471.5	-162.3	0.88	0.74	1.91	
3,136.0	15.70	61.90	3,070.7	219.8	492.7	-170.6	1.81	1.43	-4.29	
3,230.0	13.60	59.80	3,161.7	231.3	513.5	-180.1	2.30	-2.23	-2.23	
3,324.0	13.70	64.20	3,253.0	241.7	533.0	-188.6	1.11	0.11	4.68	
3,417.0	13.20	71.10	3,343.5	250.0	553.0	-194.8	1.81	-0.54	7.42	
3,511.0	12.00	69.80	3,435.2	256.8	572.3	-199.7	1.31	-1.28	-1.38	
3,605.0	13.10	72.10	3,527.0	263.5	591.6	-204.5	1.29	1.17	2.45	
3,698.0	15.40	69.00	3,617.1	271.1	613.2	-210.0	2.60	2.47	-3.33	
3,791.0	16.30	69.50	3,706.6	280.1	637.0	-216.6	0.98	0.97	0.54	
3,886.0	17.00	68.10	3,797.6	290.0	662.3	-224.0	0.85	0.74	-1.47	
3,980.0	16.10	68.80	3,887.7	299.8	687.2	-231.3	0.98	-0.96	0.74	
4,074.0	13.60	70.50	3,978.5	308.2	709.8	-237.5	2.70	-2.66	1.81	
4,168.0	12.20	69.00	4,070.2	315.5	729.5	-242.8	1.53	-1.49	-1.60	
4,262.0	13.40	61.00	4,161.8	324.3	748.3	-249.7	2.27	1.28	-8.51	
4,357.0	14.00	57.40	4,254.1	335.8	767.6	-259.3	1.10	0.63	-3.79	
4,451.0	13.30	63.70	4,345.5	346.7	786.9	-268.3	1.75	-0.74	6.70	
4,545.0	12.00	61.60	4,437.2	356.2	805.2	-275.9	1.47	-1.38	-2.23	
4,639.0	14.30	60.90	4,528.7	366.5	823.9	-284.3	2.45	2.45	-0.74	
4,732.0	13.70	59.60	4,619.0	377.6	843.4	-293.5	0.73	-0.65	-1.40	
4,826.0	14.30	62.50	4,710.2	388.6	863.3	-302.5	0.98	0.64	3.09	
4,920.0	14.90	64.70	4,801.1	399.2	884.6	-310.9	0.87	0.64	2.34	
5,014.0	14.10	67.40	4,892.1	408.7	906.1	-318.4	1.11	-0.85	2.87	
5,107.0	13.40	67.00	4,982.5	417.3	926.4	-324.9	0.76	-0.75	-0.43	
5,201.0	11.50	66.00	5,074.3	425.4	945.0	-331.1	2.03	-2.02	-1.06	
5,296.0	9.10	66.50	5,167.7	432.2	960.6	-336.4	2.53	-2.53	0.53	
5,389.0	9.20	69.50	5,259.5	437.7	974.3	-340.6	0.52	0.11	3.23	
5,484.0	7.80	71.80	5,353.5	442.4	987.5	-343.9	1.52	-1.47	2.42	
5,578.0	6.40	71.20	5,446.8	446.1	998.5	-346.5	1.49	-1.49	-0.64	
5,672.0	5.50	64.70	5,540.3	449.7	1,007.6	-349.2	1.19	-0.96	-6.91	
5,766.0	3.80	60.70	5,634.0	453.2	1,014.4	-352.0	1.84	-1.81	-4.26	
5,859.0	2.10	51.70	5,726.8	455.7	1,018.4	-354.2	1.89	-1.83	-9.68	
5,953.0	0.90	296.40	5,820.8	457.1	1,019.1	-355.5	2.78	-1.28	-122.66	

<b>Company:</b>	Bayswater Exploration & Production, LLC	<b>Local Co-ordinate Reference:</b>	Well Sherley H-4-9HN
<b>Project:</b>	SEC.4-T5N-R65W	<b>TVD Reference:</b>	WELL @ 4666.1ft (RKB - 25')
<b>Site:</b>	Sherley Pad Sec.4-T5N-R65W	<b>MD Reference:</b>	WELL @ 4666.1ft (RKB - 25')
<b>Well:</b>	Sherley H-4-9HN	<b>North Reference:</b>	True
<b>Wellbore:</b>	Wellbore #1	<b>Survey Calculation Method:</b>	Minimum Curvature
<b>Design:</b>	Wellbore #1	<b>Database:</b>	EDMNEW

## Survey

Measured Depth (ft)	Inclination (°)	Azimuth (°)	Vertical Depth (ft)	+N/-S (ft)	+E/-W (ft)	Vertical Section (ft)	Dogleg Rate (°/100ft)	Build Rate (°/100ft)	Turn Rate (°/100ft)
6,048.0	0.40	286.90	5,915.8	457.5	1,018.1	-356.0	0.54	-0.53	-10.00
6,141.0	0.30	141.40	6,008.8	457.5	1,017.9	-355.9	0.72	-0.11	-156.45
6,235.0	0.70	150.00	6,102.8	456.8	1,018.4	-355.2	0.43	0.43	9.15
6,328.0	1.10	133.30	6,195.8	455.7	1,019.3	-354.0	0.51	0.43	-17.96
6,375.0	3.50	158.80	6,242.7	454.0	1,020.2	-352.3	5.43	5.11	54.26
6,423.0	6.40	167.40	6,290.6	450.0	1,021.3	-348.2	6.22	6.04	17.92
6,470.0	9.20	165.30	6,337.1	443.8	1,022.8	-341.9	5.99	5.96	-4.47
6,516.0	12.30	171.40	6,382.3	435.4	1,024.5	-333.4	7.17	6.74	13.26
6,563.0	15.70	180.20	6,427.9	424.1	1,025.2	-322.1	8.52	7.23	18.72
6,609.0	17.80	182.90	6,472.0	410.9	1,024.8	-308.9	4.87	4.57	5.87
6,656.0	21.30	183.20	6,516.2	395.2	1,024.0	-293.4	7.45	7.45	0.64
6,703.0	25.20	186.60	6,559.4	376.7	1,022.3	-275.2	8.77	8.30	7.23
6,750.0	28.50	185.30	6,601.3	355.6	1,020.2	-254.4	7.13	7.02	-2.77
6,796.0	32.00	182.00	6,641.1	332.5	1,018.7	-231.5	8.42	7.61	-7.17
6,843.0	35.60	180.40	6,680.1	306.3	1,018.2	-205.5	7.89	7.66	-3.40
6,890.0	39.50	179.90	6,717.4	277.7	1,018.1	-177.0	8.32	8.30	-1.06
6,937.0	44.10	182.90	6,752.4	246.4	1,017.3	-146.0	10.67	9.79	6.38
6,984.0	48.70	183.00	6,784.8	212.4	1,015.6	-112.3	9.79	9.79	0.21
7,031.0	53.80	183.40	6,814.2	175.8	1,013.5	-76.1	10.87	10.85	0.85
7,078.0	59.80	182.50	6,840.0	136.6	1,011.5	-37.2	12.87	12.77	-1.91
7,125.0	63.10	181.80	6,862.4	95.3	1,010.0	3.7	7.14	7.02	-1.49
7,172.0	65.80	181.10	6,882.7	52.9	1,008.9	45.8	5.90	5.74	-1.49
7,219.0	67.70	180.90	6,901.2	9.8	1,008.1	88.6	4.06	4.04	-0.43
7,266.0	69.80	180.80	6,918.3	-34.0	1,007.5	132.2	4.47	4.47	-0.21
7,313.0	74.00	180.20	6,932.9	-78.7	1,007.1	176.6	9.02	8.94	-1.28
7,360.0	77.00	179.70	6,944.6	-124.2	1,007.1	221.9	6.47	6.38	-1.06
7,407.0	80.70	179.20	6,953.7	-170.3	1,007.6	267.8	7.94	7.87	-1.06
7,453.0	84.50	179.50	6,959.6	-215.9	1,008.1	313.2	8.29	8.26	0.65
7,484.0	86.00	180.00	6,962.2	-246.8	1,008.2	344.0	5.10	4.84	1.61
7,562.0	89.30	179.00	6,965.4	-324.7	1,008.9	421.6	4.42	4.23	-1.28
7,608.0	89.00	179.00	6,966.1	-370.7	1,009.7	467.5	0.65	-0.65	0.00
7,656.0	88.50	178.10	6,967.1	-418.7	1,010.9	515.3	2.14	-1.04	-1.88
7,703.0	90.00	179.70	6,967.8	-465.7	1,011.8	562.2	4.67	3.19	3.40
7,750.0	89.20	180.20	6,968.1	-512.7	1,011.9	608.9	2.01	-1.70	1.06
7,797.0	90.20	180.90	6,968.3	-559.7	1,011.4	655.7	2.60	2.13	1.49
7,845.0	90.60	183.00	6,968.0	-607.6	1,009.8	703.2	4.45	0.83	4.38
7,939.0	91.90	183.20	6,965.9	-701.5	1,004.7	796.1	1.40	1.38	0.21
8,033.0	91.50	182.80	6,963.2	-795.3	999.8	889.0	0.60	-0.43	-0.43
8,127.0	92.20	182.10	6,960.1	-889.1	995.8	982.1	1.05	0.74	-0.74
8,221.0	92.80	179.00	6,956.0	-983.0	994.9	1,075.4	3.36	0.64	-3.30
8,315.0	91.50	179.10	6,952.5	-1,077.0	996.4	1,169.1	1.39	-1.38	0.11
8,409.0	89.30	179.00	6,951.8	-1,170.9	998.0	1,262.7	2.34	-2.34	-0.11
8,503.0	90.20	177.70	6,952.2	-1,264.9	1,000.7	1,356.5	1.68	0.96	-1.38
8,597.0	89.90	179.50	6,952.2	-1,358.9	1,003.0	1,450.2	1.94	-0.32	1.91
8,692.0	90.00	180.90	6,952.2	-1,453.9	1,002.7	1,544.8	1.48	0.11	1.47
8,786.0	89.90	179.50	6,952.3	-1,547.9	1,002.3	1,638.3	1.49	-0.11	-1.49
8,880.0	90.70	179.70	6,951.8	-1,641.9	1,003.0	1,731.9	0.88	0.85	0.21
8,974.0	90.60	180.60	6,950.8	-1,735.8	1,002.7	1,825.4	0.96	-0.11	0.96
9,068.0	91.10	179.00	6,949.4	-1,829.8	1,003.1	1,919.0	1.78	0.53	-1.70
9,162.0	89.80	180.60	6,948.6	-1,923.8	1,003.4	2,012.6	2.19	-1.38	1.70
9,256.0	90.40	180.70	6,948.5	-2,017.8	1,002.3	2,106.0	0.65	0.64	0.11
9,350.0	89.90	181.60	6,948.2	-2,111.8	1,000.4	2,199.3	1.10	-0.53	0.96
9,444.0	91.30	182.50	6,947.2	-2,205.7	997.1	2,292.5	1.77	1.49	0.96
9,538.0	91.90	181.60	6,944.6	-2,299.6	993.7	2,385.6	1.15	0.64	-0.96

<b>Company:</b>	Bayswater Exploration & Production, LLC	<b>Local Co-ordinate Reference:</b>	Well Sherley H-4-9HN
<b>Project:</b>	SEC.4-T5N-R65W	<b>TVD Reference:</b>	WELL @ 4666.1ft (RKB - 25')
<b>Site:</b>	Sherley Pad Sec.4-T5N-R65W	<b>MD Reference:</b>	WELL @ 4666.1ft (RKB - 25')
<b>Well:</b>	Sherley H-4-9HN	<b>North Reference:</b>	True
<b>Wellbore:</b>	Wellbore #1	<b>Survey Calculation Method:</b>	Minimum Curvature
<b>Design:</b>	Wellbore #1	<b>Database:</b>	EDMNEW

## Survey

Measured Depth (ft)	Inclination (°)	Azimuth (°)	Vertical Depth (ft)	+N/-S (ft)	+E/-W (ft)	Vertical Section (ft)	Dogleg Rate (°/100ft)	Build Rate (°/100ft)	Turn Rate (°/100ft)
9,633.0	92.20	180.70	6,941.2	-2,394.6	991.8	2,479.9	1.00	0.32	-0.95
9,727.0	90.80	180.90	6,938.8	-2,488.5	990.5	2,573.3	1.50	-1.49	0.21
9,821.0	91.10	180.20	6,937.2	-2,582.5	989.6	2,666.7	0.81	0.32	-0.74
9,916.0	92.10	179.70	6,934.5	-2,677.5	989.7	2,761.2	1.18	1.05	-0.53
10,009.0	90.60	177.60	6,932.4	-2,770.4	991.9	2,854.0	2.77	-1.61	-2.26
10,104.0	90.00	179.10	6,931.9	-2,865.3	994.6	2,948.7	1.70	-0.63	1.58
10,199.0	90.90	180.00	6,931.1	-2,960.3	995.4	3,043.3	1.34	0.95	0.95
10,293.0	90.90	180.90	6,929.6	-3,054.3	994.6	3,136.8	0.96	0.00	0.96
10,387.0	90.30	182.30	6,928.7	-3,148.3	992.0	3,230.1	1.62	-0.64	1.49
10,479.0	89.70	181.30	6,928.7	-3,240.2	989.1	3,321.3	1.27	-0.65	-1.09
10,571.0	91.50	181.40	6,927.7	-3,332.2	986.9	3,412.6	1.96	1.96	0.11
10,662.0	91.50	180.20	6,925.3	-3,423.2	985.7	3,503.0	1.32	0.00	-1.32
10,754.0	92.20	179.30	6,922.3	-3,515.1	986.1	3,594.5	1.24	0.76	-0.98
10,846.0	92.60	180.90	6,918.5	-3,607.0	985.9	3,686.0	1.79	0.43	1.74
10,937.0	91.30	178.80	6,915.4	-3,698.0	986.1	3,776.5	2.71	-1.43	-2.31
11,029.0	90.90	180.60	6,913.6	-3,789.9	986.6	3,868.1	2.00	-0.43	1.96
11,121.0	91.00	178.80	6,912.1	-3,881.9	987.1	3,959.7	1.96	0.11	-1.96
11,211.0	89.60	180.70	6,911.6	-3,971.9	987.5	4,049.3	2.62	-1.56	2.11
11,303.0	88.90	179.30	6,912.8	-4,063.9	987.5	4,140.9	1.70	-0.76	-1.52
11,394.0	88.00	180.40	6,915.3	-4,154.9	987.7	4,231.4	1.56	-0.99	1.21
11,486.0	89.50	180.70	6,917.3	-4,246.8	986.9	4,322.9	1.66	1.63	0.33
11,577.0	92.00	180.90	6,916.1	-4,337.8	985.6	4,413.3	2.76	2.75	0.22
11,669.0	92.20	179.70	6,912.7	-4,429.8	985.1	4,504.7	1.32	0.22	-1.30
11,760.0	91.20	182.30	6,910.0	-4,520.7	983.5	4,595.1	3.06	-1.10	2.86
11,852.0	91.50	180.70	6,907.9	-4,612.6	981.1	4,686.3	1.77	0.33	-1.74
11,943.0	93.00	181.60	6,904.3	-4,703.5	979.3	4,776.6	1.92	1.65	0.99
12,035.0	92.20	180.90	6,900.1	-4,795.4	977.3	4,867.9	1.15	-0.87	-0.76
12,126.0	91.00	182.30	6,897.6	-4,886.3	974.7	4,958.1	2.03	-1.32	1.54
12,218.0	90.80	181.10	6,896.1	-4,978.3	972.0	5,049.4	1.32	-0.22	-1.30
12,310.0	90.70	179.70	6,894.9	-5,070.3	971.4	5,140.9	1.53	-0.11	-1.52
12,402.0	91.10	178.60	6,893.5	-5,162.3	972.7	5,232.5	1.27	0.43	-1.20
12,493.0	89.30	180.20	6,893.2	-5,253.2	973.7	5,323.2	2.65	-1.98	1.76
12,584.0	90.00	179.50	6,893.7	-5,344.2	973.9	5,413.8	1.09	0.77	-0.77
12,676.0	89.60	181.80	6,894.0	-5,436.2	972.9	5,505.2	2.54	-0.43	2.50
12,767.0	90.00	184.10	6,894.4	-5,527.1	968.2	5,595.2	2.57	0.44	2.53
12,859.0	90.60	183.50	6,893.9	-5,618.9	962.1	5,686.0	0.92	0.65	-0.65
12,950.0	90.70	182.10	6,892.8	-5,709.8	957.7	5,776.0	1.54	0.11	-1.54
12,958.7	90.70	181.92	6,892.7	-5,718.4	957.4	5,784.6	2.04	0.00	-2.04
<b>WP #1 (H-4-9HN)</b>									
13,043.0	90.70	180.20	6,891.7	-5,802.7	955.8	5,868.3	2.04	0.00	-2.04
13,137.0	91.50	179.90	6,889.9	-5,896.7	955.7	5,961.8	0.91	0.85	-0.32
13,231.0	89.30	179.10	6,889.2	-5,990.7	956.5	6,055.5	2.49	-2.34	-0.85
13,325.0	90.70	179.30	6,889.2	-6,084.7	957.8	6,149.1	1.50	1.49	0.21
13,419.0	91.40	178.40	6,887.5	-6,178.7	959.7	6,242.8	1.21	0.74	-0.96
13,513.0	90.70	178.40	6,885.8	-6,272.6	962.4	6,336.6	0.74	-0.74	0.00
13,607.0	89.80	178.60	6,885.4	-6,366.6	964.8	6,430.3	0.98	-0.96	0.21
13,702.0	89.80	178.30	6,885.7	-6,461.5	967.4	6,525.1	0.32	0.00	-0.32
13,796.0	88.00	180.20	6,887.5	-6,555.5	968.6	6,618.7	2.78	-1.91	2.02
13,890.0	88.40	181.60	6,890.5	-6,649.5	967.1	6,712.1	1.55	0.43	1.49
13,984.0	88.70	183.20	6,892.9	-6,743.3	963.2	6,805.1	1.73	0.32	1.70
14,078.0	89.60	183.20	6,894.3	-6,837.2	958.0	6,898.0	0.96	0.96	0.00
14,172.0	90.40	182.00	6,894.3	-6,931.1	953.7	6,991.1	1.53	0.85	-1.28
14,265.0	91.70	180.20	6,892.6	-7,024.0	951.9	7,083.4	2.39	1.40	-1.94
14,360.0	91.90	180.00	6,889.6	-7,119.0	951.7	7,177.9	0.30	0.21	-0.21

<b>Company:</b>	Bayswater Exploration & Production, LLC	<b>Local Co-ordinate Reference:</b>	Well Sherley H-4-9HN
<b>Project:</b>	SEC.4-T5N-R65W	<b>TVD Reference:</b>	WELL @ 4666.1ft (RKB - 25')
<b>Site:</b>	Sherley Pad Sec.4-T5N-R65W	<b>MD Reference:</b>	WELL @ 4666.1ft (RKB - 25')
<b>Well:</b>	Sherley H-4-9HN	<b>North Reference:</b>	True
<b>Wellbore:</b>	Wellbore #1	<b>Survey Calculation Method:</b>	Minimum Curvature
<b>Design:</b>	Wellbore #1	<b>Database:</b>	EDMNEW

Survey

Measured Depth (ft)	Inclination (°)	Azimuth (°)	Vertical Depth (ft)	+N/-S (ft)	+E/-W (ft)	Vertical Section (ft)	Dogleg Rate (°/100ft)	Build Rate (°/100ft)	Turn Rate (°/100ft)
14,453.0	91.70	179.00	6,886.6	-7,211.9	952.6	7,270.5	1.10	-0.22	-1.08
14,547.0	91.00	178.40	6,884.4	-7,305.9	954.7	7,364.2	0.98	-0.74	-0.64
14,641.0	91.90	179.50	6,882.1	-7,399.8	956.4	7,457.9	1.51	0.96	1.17
14,735.0	90.00	180.40	6,880.5	-7,493.8	956.5	7,551.4	2.24	-2.02	0.96
14,829.0	88.30	180.00	6,881.9	-7,587.8	956.2	7,644.9	1.86	-1.81	-0.43
14,923.0	89.30	180.90	6,883.9	-7,681.8	955.4	7,738.4	1.43	1.06	0.96
15,018.0	89.40	181.60	6,884.9	-7,776.8	953.3	7,832.7	0.74	0.11	0.74
15,112.0	90.40	181.40	6,885.1	-7,870.7	950.9	7,925.9	1.08	1.06	-0.21
15,206.0	90.70	181.30	6,884.2	-7,964.7	948.7	8,019.3	0.34	0.32	-0.11
15,300.0	91.10	180.70	6,882.7	-8,058.7	947.0	8,112.6	0.77	0.43	-0.64
15,394.0	91.60	180.20	6,880.5	-8,152.6	946.3	8,206.1	0.75	0.53	-0.53
15,489.0	92.00	178.80	6,877.5	-8,247.6	947.1	8,300.6	1.53	0.42	-1.47
15,583.0	91.30	179.00	6,874.8	-8,341.5	948.9	8,394.3	0.77	-0.74	0.21
15,676.0	91.10	177.90	6,872.9	-8,434.5	951.4	8,487.1	1.20	-0.22	-1.18
15,770.0	89.30	177.90	6,872.5	-8,528.4	954.9	8,580.9	1.91	-1.91	0.00
15,864.0	89.80	179.30	6,873.3	-8,622.4	957.2	8,674.6	1.58	0.53	1.49
15,959.0	90.20	180.90	6,873.3	-8,717.4	957.0	8,769.1	1.74	0.42	1.68
16,053.0	88.70	180.90	6,874.2	-8,811.3	955.5	8,862.5	1.60	-1.60	0.00
16,148.0	88.90	180.20	6,876.2	-8,906.3	954.6	8,957.0	0.77	0.21	-0.74
16,242.0	88.50	181.60	6,878.3	-9,000.3	953.2	9,050.3	1.55	-0.43	1.49
16,336.0	90.10	181.40	6,879.5	-9,094.2	950.7	9,143.6	1.72	1.70	-0.21
16,430.0	90.40	180.40	6,879.0	-9,188.2	949.2	9,237.0	1.11	0.32	-1.06
16,525.0	90.90	180.20	6,878.0	-9,283.2	948.7	9,331.5	0.57	0.53	-0.21
16,619.0	91.30	179.70	6,876.2	-9,377.2	948.8	9,425.0	0.68	0.43	-0.53
16,713.0	91.20	180.00	6,874.1	-9,471.2	949.0	9,518.6	0.34	-0.11	0.32
16,807.0	91.50	179.70	6,871.9	-9,565.2	949.3	9,612.1	0.45	0.32	-0.32
16,833.0	91.80	179.10	6,871.1	-9,591.1	949.6	9,638.0	2.58	1.15	-2.31
16,890.0	91.80	179.10	6,869.4	-9,648.1	950.5	9,694.8	0.00	0.00	0.00
BHL 470°FSL, 1725°FWL, SEC.9									

Checked By: \_\_\_\_\_ Approved By: \_\_\_\_\_ Date: \_\_\_\_\_