

Bayswater Exploration & Production, LLC

Well Name: **Sherley G-4-9HC**

Surface Location: Sherley Pad Sec.4-T5N-R65W

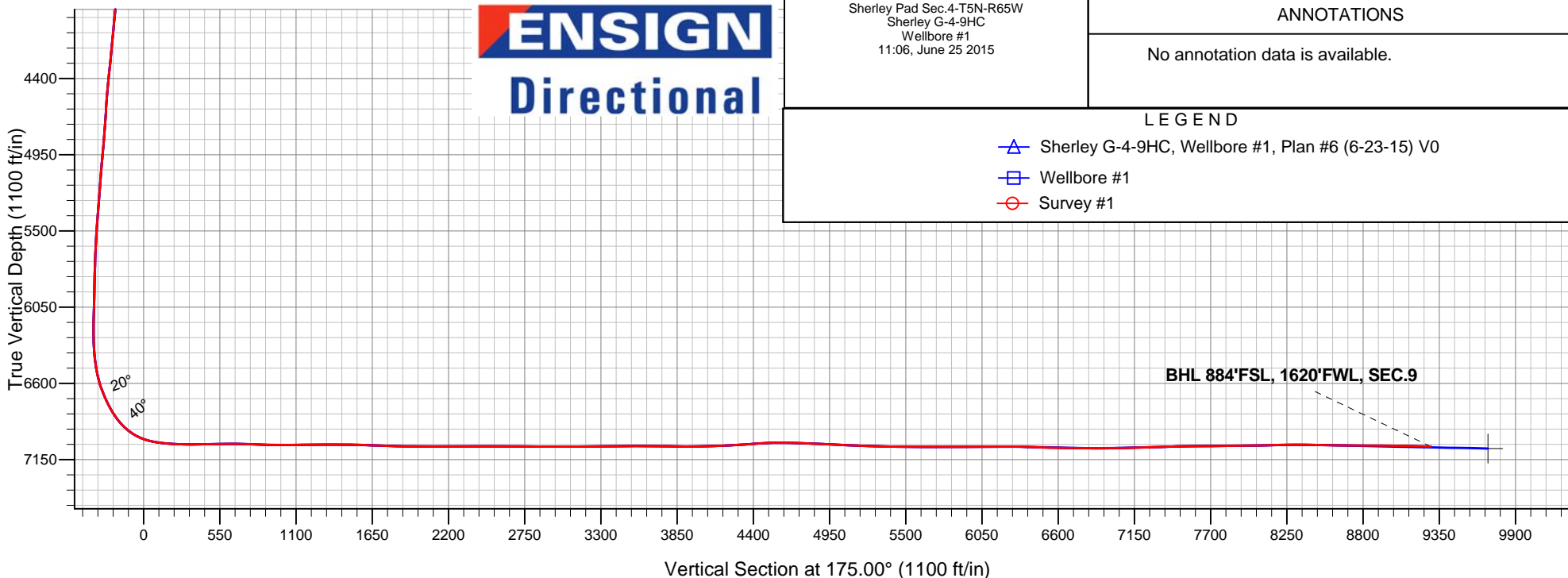
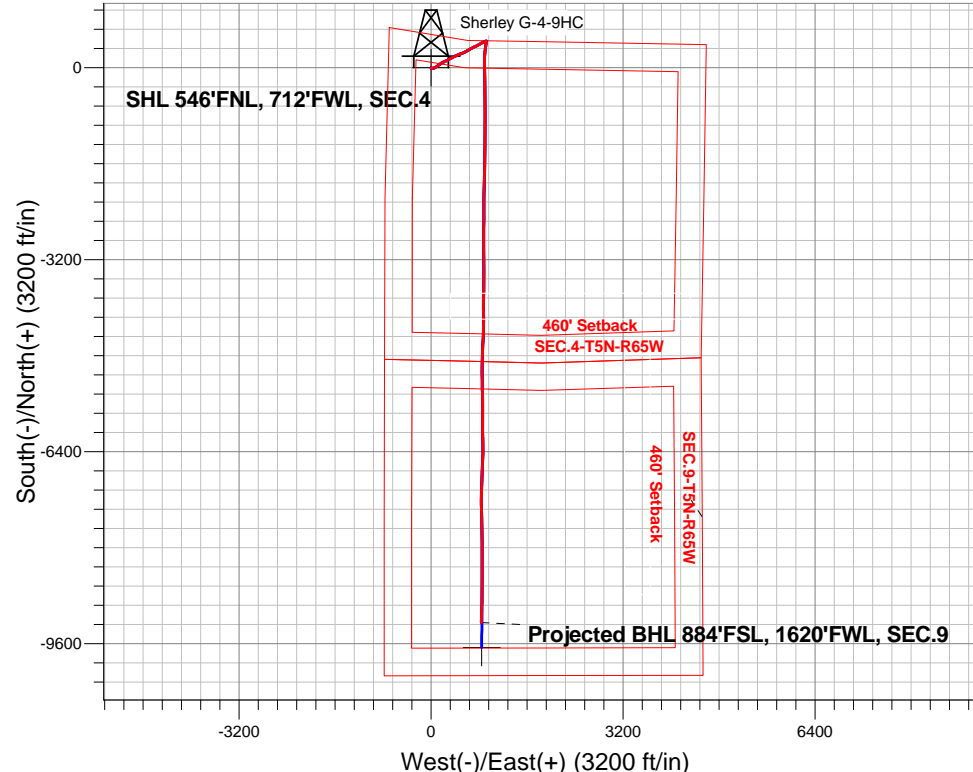
North American Datum 1983 , US State Plane 1983 , Colorado Northern Zone

Ground Elevation: 4641.8

+N/-S	+E/-W	Northing	Easting	Latitude	Longitude	Slot
0.0	0.0	1402118.58	3229605.04	40.434286	-104.675167	
RKB - 25' WELL @ 4666.8ft (RKB - 25')						

FINAL SURVEY

Projected Bottom Hole Location
16582'MD 7055'TVD 9250'S & 840'E of SHL
88.55 degree Incl @ 181.08 degree AZM



Sherley Pad Sec.4-T5N-R65W
Sherley G-4-9HC
Wellbore #1
11:06, June 25 2015

ANNOTATIONS

No annotation data is available.

LEGEND

- △ Sherley G-4-9HC, Wellbore #1, Plan #6 (6-23-15) V0
- Wellbore #1
- Survey #1



Bayswater Exploration & Production, LLC

SEC.4-T5N-R65W

Sherley Pad Sec.4-T5N-R65W

Sherley G-4-9HC

Wellbore #1

Survey: Survey #1

Standard Survey Report

02 July, 2015



BAYSWATER
EXPLORATION & PRODUCTION, LLC

Company:	Bayswater Exploration & Production, LLC	Local Co-ordinate Reference:	Well Sherley G-4-9HC
Project:	SEC.4-T5N-R65W	TVD Reference:	WELL @ 4666.8ft (RKB - 25')
Site:	Sherley Pad Sec.4-T5N-R65W	MD Reference:	WELL @ 4666.8ft (RKB - 25')
Well:	Sherley G-4-9HC	North Reference:	True
Wellbore:	Wellbore #1	Survey Calculation Method:	Minimum Curvature
Design:	Wellbore #1	Database:	EDMNEW

Project	SEC.4-T5N-R65W, Weld County, Colorado		
Map System:	US State Plane 1983	System Datum:	Mean Sea Level
Geo Datum:	North American Datum 1983		Using Well Reference Point
Map Zone:	Colorado Northern Zone		Using geodetic scale factor

Site	Sherley Pad Sec.4-T5N-R65W		
Site Position:		Northing:	1,402,207.92 ft
From:	Lat/Long	Easting:	3,229,612.00 ft
Position Uncertainty:	0.0 ft	Slot Radius:	"
		Latitude:	40.434531
		Longitude:	-104.675139
		Grid Convergence:	0.53 °

Well	Sherley G-4-9HC		
Well Position	+N/-S	0.0 ft	Northing:
	+E/-W	0.0 ft	Easting:
Position Uncertainty	0.0 ft	Wellhead Elevation:	ft
		Latitude:	40.434286
		Longitude:	-104.675167
		Ground Level:	4,641.8 ft

Wellbore	Wellbore #1		
Magnetics	Model Name	Sample Date	Declination (°)
	IGRF2010	6/20/2015	8.28
			Dip Angle (°)
			66.95
			Field Strength (nT)
			52,737

Design	Wellbore #1		
Audit Notes:			
Version:	1.0	Phase:	ACTUAL
		Tie On Depth:	0.0
Vertical Section:	Depth From (TVD) (ft)	+N/-S (ft)	+E/-W (ft)
	0.0	0.0	0.0
			Direction (°)
			175.00

Survey Program	Date	6/25/2015		
From (ft)	To (ft)	Survey (Wellbore)	Tool Name	Description
130.0	16,582.0	Survey #1 (Wellbore #1)	MWD	MWD - Standard

Survey										
Measured Depth (ft)	Inclination (°)	Azimuth (°)	Vertical Depth (ft)	+N/-S (ft)	+E/-W (ft)	Vertical Section (ft)	Dogleg Rate (°/100ft)	Build Rate (°/100ft)	Turn Rate (°/100ft)	
0.0	0.00	0.00	0.0	0.0	0.0	0.0	0.00	0.00	0.00	
1.0	0.00	148.60	1.0	0.0	0.0	0.0	0.00	0.00	0.00	
SHL 546'FNL, 712'FWL, SEC.4										
130.0	0.10	148.60	130.0	-0.1	0.1	0.1	0.08	0.08	0.00	
160.0	0.30	169.30	160.0	-0.2	0.1	0.2	0.70	0.67	69.00	
252.0	0.00	173.00	252.0	-0.4	0.1	0.4	0.33	-0.33	0.00	
344.0	0.10	221.00	344.0	-0.5	0.1	0.5	0.11	0.11	0.00	
435.0	0.40	142.80	435.0	-0.8	0.2	0.8	0.43	0.33	-85.93	
526.0	0.40	145.80	526.0	-1.3	0.6	1.4	0.02	0.00	3.30	
618.0	0.70	153.90	618.0	-2.1	1.0	2.2	0.34	0.33	8.80	
710.0	1.00	162.80	710.0	-3.4	1.5	3.5	0.36	0.33	9.67	
785.0	1.10	165.50	785.0	-4.7	1.9	4.8	0.15	0.13	3.60	
916.0	1.80	146.30	915.9	-7.6	3.3	7.9	0.64	0.53	-14.66	

Company:	Bayswater Exploration & Production, LLC	Local Co-ordinate Reference:	Well Sherley G-4-9HC
Project:	SEC.4-T5N-R65W	TVD Reference:	WELL @ 4666.8ft (RKB - 25')
Site:	Sherley Pad Sec.4-T5N-R65W	MD Reference:	WELL @ 4666.8ft (RKB - 25')
Well:	Sherley G-4-9HC	North Reference:	True
Wellbore:	Wellbore #1	Survey Calculation Method:	Minimum Curvature
Design:	Wellbore #1	Database:	EDMNEW

Survey

Measured Depth (ft)	Inclination (°)	Azimuth (°)	Vertical Depth (ft)	+N/-S (ft)	+E/-W (ft)	Vertical Section (ft)	Dogleg Rate (°/100ft)	Build Rate (°/100ft)	Turn Rate (°/100ft)
1,011.0	4.70	103.40	1,010.8	-9.8	7.9	10.4	3.79	3.05	-45.16
1,105.0	6.10	92.50	1,104.4	-10.9	16.7	12.3	1.84	1.49	-11.60
1,197.0	7.60	86.40	1,195.7	-10.7	27.6	13.1	1.81	1.63	-6.63
1,288.0	9.70	80.70	1,285.7	-9.1	41.2	12.6	2.49	2.31	-6.26
1,380.0	9.90	67.50	1,376.3	-4.8	56.2	9.7	2.45	0.22	-14.35
1,472.0	11.20	58.90	1,466.8	2.8	71.1	3.4	2.22	1.41	-9.35
1,564.0	11.70	57.00	1,556.9	12.5	86.6	-4.9	0.68	0.54	-2.07
1,654.0	12.80	53.00	1,644.9	23.5	102.2	-14.5	1.54	1.22	-4.44
1,745.0	12.40	52.10	1,733.7	35.6	118.0	-25.2	0.49	-0.44	-0.99
1,837.0	13.90	56.50	1,823.3	47.7	135.0	-35.8	1.96	1.63	4.78
1,929.0	12.80	51.60	1,912.8	60.2	152.2	-46.7	1.71	-1.20	-5.33
2,020.0	13.20	56.60	2,001.5	72.2	168.8	-57.2	1.31	0.44	5.49
2,112.0	13.30	61.20	2,091.0	83.0	186.8	-66.4	1.15	0.11	5.00
2,204.0	13.10	69.30	2,180.6	91.8	205.8	-73.5	2.02	-0.22	8.80
2,296.0	12.30	63.30	2,270.4	99.9	224.3	-80.0	1.68	-0.87	-6.52
2,388.0	11.80	66.50	2,360.3	108.1	241.7	-86.6	0.91	-0.54	3.48
2,482.0	13.60	64.20	2,452.0	116.7	260.5	-93.6	1.99	1.91	-2.45
2,576.0	13.20	60.20	2,543.5	126.8	279.8	-102.0	1.07	-0.43	-4.26
2,669.0	12.90	58.80	2,634.1	137.5	297.9	-111.0	0.47	-0.32	-1.51
2,763.0	13.90	64.20	2,725.5	147.9	317.0	-119.7	1.70	1.06	5.74
2,856.0	13.20	61.20	2,815.9	157.8	336.4	-127.9	1.07	-0.75	-3.23
2,950.0	12.10	63.30	2,907.6	167.4	354.6	-135.9	1.27	-1.17	2.23
3,044.0	12.60	62.30	2,999.5	176.6	372.4	-143.5	0.58	0.53	-1.06
3,136.0	12.00	61.90	3,089.4	185.8	389.8	-151.1	0.66	-0.65	-0.43
3,230.0	12.40	70.00	3,181.2	193.8	407.9	-157.6	1.87	0.43	8.62
3,324.0	12.30	66.50	3,273.1	201.3	426.5	-163.4	0.80	-0.11	-3.72
3,417.0	11.30	62.80	3,364.1	209.4	443.7	-170.0	1.35	-1.08	-3.98
3,511.0	11.30	65.80	3,456.3	217.4	460.3	-176.5	0.63	0.00	3.19
3,604.0	11.10	67.00	3,547.5	224.6	476.9	-182.2	0.33	-0.22	1.29
3,698.0	13.40	71.60	3,639.4	231.6	495.5	-187.6	2.66	2.45	4.89
3,791.0	14.00	73.30	3,729.7	238.2	516.5	-192.3	0.78	0.65	1.83
3,885.0	14.20	66.70	3,820.9	246.1	538.0	-198.3	1.72	0.21	-7.02
3,980.0	14.10	63.90	3,913.0	255.8	559.1	-206.1	0.73	-0.11	-2.95
4,074.0	13.50	62.10	4,004.3	265.9	579.1	-214.5	0.78	-0.64	-1.91
4,168.0	11.90	58.20	4,096.0	276.2	597.0	-223.1	1.93	-1.70	-4.15
4,262.0	12.80	57.50	4,187.8	286.9	614.0	-232.3	0.97	0.96	-0.74
4,357.0	12.80	61.00	4,280.5	297.6	632.1	-241.4	0.82	0.00	3.68
4,451.0	13.80	58.10	4,371.9	308.6	650.8	-250.8	1.28	1.06	-3.09
4,544.0	13.30	62.50	4,462.4	319.4	669.7	-259.9	1.23	-0.54	4.73
4,638.0	13.00	67.00	4,553.9	328.5	689.0	-267.3	1.13	-0.32	4.79
4,732.0	10.80	66.70	4,645.9	336.1	706.8	-273.3	2.34	-2.34	-0.32
4,826.0	11.00	63.30	4,738.2	343.7	722.9	-279.4	0.72	0.21	-3.62
4,920.0	10.70	60.30	4,830.5	352.0	738.5	-286.4	0.68	-0.32	-3.19
5,014.0	12.10	59.30	4,922.6	361.4	754.5	-294.3	1.50	1.49	-1.06
5,107.0	13.80	64.20	5,013.3	371.2	772.9	-302.4	2.17	1.83	5.27
5,201.0	11.10	60.90	5,105.1	380.5	790.9	-310.1	2.97	-2.87	-3.51
5,296.0	10.40	62.80	5,198.4	388.8	806.5	-317.1	0.83	-0.74	2.00
5,389.0	10.70	61.90	5,289.8	396.7	821.6	-323.7	0.37	0.32	-0.97
5,483.0	10.20	54.90	5,382.3	405.6	836.1	-331.3	1.45	-0.53	-7.45
5,578.0	12.10	62.80	5,475.5	415.0	851.9	-339.2	2.56	2.00	8.32
5,672.0	11.30	73.50	5,567.5	422.1	869.5	-344.8	2.46	-0.85	11.38
5,766.0	8.70	71.80	5,660.1	427.0	885.0	-348.3	2.78	-2.77	-1.81
5,859.0	6.80	69.10	5,752.2	431.1	896.9	-351.4	2.08	-2.04	-2.90
5,953.0	5.40	71.80	5,845.7	434.5	906.3	-353.9	1.52	-1.49	2.87

Company:	Bayswater Exploration & Production, LLC	Local Co-ordinate Reference:	Well Sherley G-4-9HC
Project:	SEC.4-T5N-R65W	TVD Reference:	WELL @ 4666.8ft (RKB - 25')
Site:	Sherley Pad Sec.4-T5N-R65W	MD Reference:	WELL @ 4666.8ft (RKB - 25')
Well:	Sherley G-4-9HC	North Reference:	True
Wellbore:	Wellbore #1	Survey Calculation Method:	Minimum Curvature
Design:	Wellbore #1	Database:	EDMNEW

Survey

Measured Depth (ft)	Inclination (°)	Azimuth (°)	Vertical Depth (ft)	+N/-S (ft)	+E/-W (ft)	Vertical Section (ft)	Dogleg Rate (°/100ft)	Build Rate (°/100ft)	Turn Rate (°/100ft)
6,047.0	3.80	57.70	5,939.4	437.5	913.1	-356.3	2.07	-1.70	-15.00
6,141.0	1.50	31.90	6,033.3	440.2	916.4	-358.8	2.70	-2.45	-27.45
6,235.0	1.00	32.90	6,127.3	442.0	917.5	-360.4	0.53	-0.53	1.06
6,328.0	1.10	63.90	6,220.3	443.1	918.7	-361.4	0.61	0.11	33.33
6,375.0	1.10	92.90	6,267.2	443.2	919.6	-361.5	1.17	0.00	61.70
6,423.0	2.40	153.30	6,315.2	442.3	920.5	-360.5	4.35	2.71	125.83
6,470.0	3.80	173.00	6,362.2	439.9	921.1	-358.0	3.70	2.98	41.91
6,516.0	5.90	183.70	6,408.0	436.0	921.2	-354.1	4.95	4.57	23.26
6,563.0	8.00	184.40	6,454.6	430.3	920.8	-348.5	4.47	4.47	1.49
6,608.0	10.40	187.10	6,499.1	423.2	920.0	-341.4	5.42	5.33	6.00
6,655.0	13.40	188.30	6,545.0	413.6	918.7	-332.0	6.40	6.38	2.55
6,702.0	16.30	190.80	6,590.5	401.7	916.7	-320.4	6.32	6.17	5.32
6,749.0	20.40	187.60	6,635.1	387.1	914.4	-306.0	8.98	8.72	-6.81
6,796.0	23.00	187.30	6,678.7	369.9	912.1	-289.0	5.54	5.53	-0.64
6,843.0	25.10	186.20	6,721.7	350.9	909.9	-270.3	4.57	4.47	-2.34
6,890.0	28.30	185.50	6,763.6	329.9	907.7	-249.5	6.84	6.81	-1.49
6,937.0	32.30	188.80	6,804.2	306.3	904.7	-226.4	9.22	8.51	7.02
6,984.0	35.30	189.00	6,843.3	280.5	900.7	-201.0	6.39	6.38	0.43
7,031.0	40.60	185.00	6,880.3	251.8	897.2	-172.7	12.43	11.28	-8.51
7,078.0	46.60	182.30	6,914.3	219.5	895.2	-140.7	13.36	12.77	-5.74
7,125.0	52.90	181.60	6,944.7	183.7	894.0	-105.1	13.45	13.40	-1.49
7,172.0	59.90	180.20	6,970.7	144.6	893.4	-66.2	15.10	14.89	-2.98
7,219.0	66.90	179.70	6,991.7	102.6	893.4	-24.4	14.92	14.89	-1.06
7,266.0	72.50	180.00	7,008.0	58.5	893.6	19.5	11.93	11.91	0.64
7,313.0	79.20	179.50	7,019.5	13.0	893.8	64.9	14.29	14.26	-1.06
7,360.0	82.80	179.20	7,026.9	-33.5	894.3	111.2	7.69	7.66	-0.64
7,484.0	87.03	180.49	7,037.8	-156.9	894.6	234.3	3.57	3.41	1.04
7,578.0	89.66	179.25	7,040.6	-250.9	894.8	327.9	3.09	2.80	-1.32
7,672.0	91.51	178.52	7,039.6	-344.9	896.7	421.6	2.12	1.97	-0.78
7,767.0	91.12	178.53	7,037.4	-439.8	899.1	516.4	0.41	-0.41	0.01
7,861.0	90.84	180.86	7,035.8	-533.8	899.6	610.1	2.50	-0.30	2.48
7,955.0	88.21	179.64	7,036.6	-627.8	899.2	703.7	3.08	-2.80	-1.30
8,049.0	87.70	179.07	7,039.9	-721.7	900.3	797.4	0.81	-0.54	-0.61
8,143.0	88.94	180.79	7,042.7	-815.7	900.4	891.0	2.26	1.32	1.83
8,237.0	89.33	179.99	7,044.1	-909.6	899.7	984.5	0.95	0.41	-0.85
8,331.0	90.45	179.16	7,044.3	-1,003.6	900.4	1,078.2	1.48	1.19	-0.88
8,425.0	91.18	181.12	7,043.0	-1,097.6	900.2	1,171.9	2.22	0.78	2.09
8,520.0	90.73	179.87	7,041.4	-1,192.6	899.4	1,266.4	1.40	-0.47	-1.32
8,614.0	89.72	182.17	7,041.0	-1,286.6	897.7	1,359.9	2.67	-1.07	2.45
8,708.0	89.22	181.10	7,041.9	-1,380.5	895.0	1,453.2	1.26	-0.53	-1.14
8,803.0	88.99	179.45	7,043.4	-1,475.5	894.6	1,547.8	1.75	-0.24	-1.74
8,896.0	87.76	180.46	7,046.0	-1,568.5	894.6	1,640.4	1.71	-1.32	1.09
8,990.0	88.21	179.72	7,049.3	-1,662.4	894.5	1,734.0	0.92	0.48	-0.79
9,084.0	87.70	181.52	7,052.7	-1,756.3	893.5	1,827.5	1.99	-0.54	1.91
9,179.0	90.28	182.78	7,054.3	-1,851.3	889.9	1,921.7	3.02	2.72	1.33
9,273.0	90.28	182.34	7,053.9	-1,945.2	885.7	2,014.9	0.47	0.00	-0.47
9,366.0	89.55	181.51	7,054.0	-2,038.1	882.6	2,107.2	1.19	-0.78	-0.89
9,460.0	90.17	181.24	7,054.2	-2,132.1	880.3	2,200.7	0.72	0.66	-0.29
9,555.0	90.11	180.35	7,054.0	-2,227.1	879.0	2,295.2	0.94	-0.06	-0.94
9,650.0	90.11	180.10	7,053.8	-2,322.1	878.6	2,389.8	0.26	0.00	-0.26
9,744.0	89.55	178.49	7,054.1	-2,416.1	879.8	2,483.5	1.81	-0.60	-1.71
9,798.0	90.57	178.98	7,054.1	-2,470.0	881.0	2,537.4	2.10	1.89	0.91
9,892.0	90.22	180.73	7,053.4	-2,564.0	881.2	2,631.0	1.90	-0.37	1.86
9,986.0	88.99	181.70	7,054.1	-2,658.0	879.2	2,724.5	1.67	-1.31	1.03

Company:	Bayswater Exploration & Production, LLC	Local Co-ordinate Reference:	Well Sherley G-4-9HC
Project:	SEC.4-T5N-R65W	TVD Reference:	WELL @ 4666.8ft (RKB - 25')
Site:	Sherley Pad Sec.4-T5N-R65W	MD Reference:	WELL @ 4666.8ft (RKB - 25')
Well:	Sherley G-4-9HC	North Reference:	True
Wellbore:	Wellbore #1	Survey Calculation Method:	Minimum Curvature
Design:	Wellbore #1	Database:	EDMNEW

Survey

Measured Depth (ft)	Inclination (°)	Azimuth (°)	Vertical Depth (ft)	+N/-S (ft)	+E/-W (ft)	Vertical Section (ft)	Dogleg Rate (°/100ft)	Build Rate (°/100ft)	Turn Rate (°/100ft)
10,081.0	88.99	180.56	7,055.7	-2,753.0	877.4	2,818.9	1.20	0.00	-1.20
10,176.0	89.60	179.77	7,056.9	-2,848.0	877.1	2,913.5	1.05	0.64	-0.83
10,270.0	90.31	179.15	7,057.0	-2,942.0	878.0	3,007.2	1.00	0.76	-0.66
10,362.0	90.57	180.56	7,056.3	-3,034.0	878.2	3,098.9	1.56	0.28	1.53
10,453.0	90.75	179.85	7,055.2	-3,124.9	877.9	3,189.5	0.80	0.20	-0.78
10,545.0	90.48	180.03	7,054.2	-3,216.9	878.0	3,281.2	0.35	-0.29	0.20
10,636.0	90.75	178.80	7,053.3	-3,307.9	878.9	3,371.9	1.38	0.30	-1.35
10,728.0	91.01	179.94	7,051.8	-3,399.9	879.9	3,463.6	1.27	0.28	1.24
10,820.0	90.13	180.03	7,050.9	-3,491.9	879.9	3,555.3	0.96	-0.96	0.10
10,911.0	89.08	180.73	7,051.6	-3,582.9	879.3	3,645.9	1.39	-1.15	0.77
11,002.0	88.90	180.56	7,053.2	-3,673.9	878.3	3,736.4	0.27	-0.20	-0.19
11,093.0	88.64	180.82	7,055.1	-3,764.9	877.2	3,826.9	0.40	-0.29	0.29
11,177.0	90.57	181.35	7,055.7	-3,848.8	875.6	3,910.5	2.38	2.30	0.63
11,269.0	91.10	180.21	7,054.3	-3,940.8	874.4	4,002.0	1.37	0.58	-1.24
11,361.0	91.80	179.77	7,052.0	-4,032.8	874.4	4,093.6	0.90	0.76	-0.48
11,453.0	92.24	179.15	7,048.8	-4,124.7	875.3	4,185.3	0.83	0.48	-0.67
11,545.0	93.30	178.98	7,044.3	-4,216.6	876.8	4,276.9	1.17	1.15	-0.18
11,637.0	93.83	179.68	7,038.6	-4,308.4	877.8	4,368.5	0.95	0.58	0.76
11,729.0	93.91	181.61	7,032.4	-4,400.2	876.8	4,459.8	2.09	0.09	2.10
11,820.0	91.19	185.39	7,028.3	-4,490.9	871.2	4,549.7	5.11	-2.99	4.15
11,911.0	88.20	184.51	7,028.8	-4,581.6	863.4	4,639.3	3.43	-3.29	-0.97
12,003.0	88.81	182.14	7,031.2	-4,673.4	858.1	4,730.3	2.66	0.66	-2.58
12,094.0	87.76	180.65	7,034.0	-4,764.3	855.8	4,820.7	2.00	-1.15	-1.64
12,186.0	87.49	180.29	7,037.8	-4,856.2	855.1	4,912.2	0.49	-0.29	-0.39
12,278.0	87.49	180.38	7,041.8	-4,948.1	854.6	5,003.7	0.10	0.00	0.10
12,369.0	87.41	179.77	7,045.8	-5,039.0	854.4	5,094.3	0.68	-0.09	-0.67
12,461.0	87.67	180.12	7,049.8	-5,130.9	854.5	5,185.9	0.47	0.28	0.38
12,552.0	88.29	180.38	7,053.0	-5,221.9	854.1	5,276.4	0.74	0.68	0.29
12,644.0	89.25	179.59	7,055.0	-5,313.9	854.2	5,368.1	1.35	1.04	-0.86
12,735.0	89.43	177.92	7,056.0	-5,404.8	856.1	5,458.9	1.85	0.20	-1.84
12,827.0	89.08	178.10	7,057.2	-5,496.8	859.3	5,550.7	0.43	-0.38	0.20
12,919.0	88.81	179.94	7,058.9	-5,588.7	860.9	5,642.5	2.02	-0.29	2.00
13,013.0	90.57	180.47	7,059.4	-5,682.7	860.6	5,736.1	1.96	1.87	0.56
13,107.0	91.10	179.85	7,058.1	-5,776.7	860.3	5,829.7	0.87	0.56	-0.66
13,201.0	90.22	179.77	7,057.0	-5,870.7	860.6	5,923.4	0.94	-0.94	-0.09
13,295.0	90.13	180.38	7,056.7	-5,964.7	860.5	6,017.0	0.66	-0.10	0.65
13,389.0	89.78	179.50	7,056.8	-6,058.7	860.6	6,110.6	1.01	-0.37	-0.94
13,483.0	90.04	179.50	7,056.9	-6,152.7	861.4	6,204.4	0.28	0.28	0.00
13,577.0	90.13	179.24	7,056.8	-6,246.7	862.4	6,298.1	0.29	0.10	-0.28
13,671.0	88.20	180.21	7,058.1	-6,340.7	862.9	6,391.7	2.30	-2.05	1.03
13,765.0	88.72	180.56	7,060.7	-6,434.6	862.3	6,485.3	0.67	0.55	0.37
13,859.0	88.46	181.44	7,063.0	-6,528.6	860.6	6,578.8	0.98	-0.28	0.94
13,953.0	88.90	182.23	7,065.1	-6,622.5	857.6	6,672.1	0.96	0.47	0.84
14,047.0	89.08	182.23	7,066.8	-6,716.4	854.0	6,765.3	0.19	0.19	0.00
14,141.0	89.25	183.19	7,068.2	-6,810.3	849.5	6,858.4	1.04	0.18	1.02
14,236.0	91.10	181.88	7,067.9	-6,905.2	845.3	6,952.6	2.39	1.95	-1.38
14,330.0	91.10	181.52	7,066.1	-6,999.2	842.5	7,046.0	0.38	0.00	-0.38
14,424.0	91.63	181.26	7,063.8	-7,093.1	840.2	7,139.3	0.63	0.56	-0.28
14,519.0	91.63	180.47	7,061.1	-7,188.1	838.8	7,233.8	0.83	0.00	-0.83
14,613.0	92.15	179.15	7,058.0	-7,282.0	839.1	7,327.4	1.51	0.55	-1.40
14,707.0	91.98	178.45	7,054.6	-7,375.9	841.1	7,421.2	0.77	-0.18	-0.74
14,801.0	90.31	178.19	7,052.8	-7,469.9	843.8	7,515.0	1.80	-1.78	-0.28
14,895.0	90.22	178.45	7,052.3	-7,563.8	846.6	7,608.8	0.29	-0.10	0.28
14,990.0	90.75	178.45	7,051.5	-7,658.8	849.2	7,703.6	0.56	0.56	0.00

Company:	Bayswater Exploration & Production, LLC	Local Co-ordinate Reference:	Well Sherley G-4-9HC
Project:	SEC.4-T5N-R65W	TVD Reference:	WELL @ 4666.8ft (RKB - 25')
Site:	Sherley Pad Sec.4-T5N-R65W	MD Reference:	WELL @ 4666.8ft (RKB - 25')
Well:	Sherley G-4-9HC	North Reference:	True
Wellbore:	Wellbore #1	Survey Calculation Method:	Minimum Curvature
Design:	Wellbore #1	Database:	EDMNEW

Survey

Measured Depth (ft)	Inclination (°)	Azimuth (°)	Vertical Depth (ft)	+N/-S (ft)	+E/-W (ft)	Vertical Section (ft)	Dogleg Rate (°/100ft)	Build Rate (°/100ft)	Turn Rate (°/100ft)
15,084.0	90.31	179.42	7,050.7	-7,752.8	850.9	7,797.4	1.13	-0.47	1.03
15,178.0	90.57	179.94	7,049.9	-7,846.8	851.4	7,891.1	0.62	0.28	0.55
15,273.0	91.01	180.29	7,048.6	-7,941.7	851.2	7,985.7	0.59	0.46	0.37
15,367.0	91.19	180.82	7,046.8	-8,035.7	850.3	8,079.3	0.60	0.19	0.56
15,461.0	91.71	179.77	7,044.4	-8,129.7	849.9	8,172.8	1.25	0.55	-1.12
15,555.0	90.48	180.21	7,042.6	-8,223.7	849.9	8,266.4	1.39	-1.31	0.47
15,650.0	89.69	180.21	7,042.5	-8,318.7	849.5	8,361.1	0.83	-0.83	0.00
15,656.3	89.62	180.18	7,042.5	-8,325.0	849.5	8,367.4	1.13	-1.03	-0.47
WP #9 (G-9HC)									
15,744.0	88.72	179.77	7,043.8	-8,412.7	849.5	8,454.7	1.13	-1.03	-0.47
15,838.0	88.99	179.50	7,045.7	-8,506.6	850.1	8,548.4	0.41	0.29	-0.29
15,932.0	89.16	179.15	7,047.2	-8,600.6	851.2	8,642.1	0.41	0.18	-0.37
16,026.0	89.69	179.33	7,048.2	-8,694.6	852.5	8,735.8	0.60	0.56	0.19
16,121.0	89.78	180.73	7,048.6	-8,789.6	852.4	8,830.4	1.48	0.09	1.47
16,215.0	89.43	182.84	7,049.2	-8,883.6	849.5	8,923.8	2.28	-0.37	2.24
16,309.0	89.52	181.35	7,050.1	-8,977.5	846.1	9,017.1	1.59	0.10	-1.59
16,403.0	89.16	181.70	7,051.2	-9,071.4	843.6	9,110.4	0.53	-0.38	0.37
16,498.0	88.55	181.08	7,053.1	-9,166.4	841.3	9,204.8	0.92	-0.64	-0.65
16,582.0	88.55	181.08	7,055.2	-9,250.4	839.7	9,288.3	0.00	0.00	0.00
BHL 470°FSL, 1625°FSL, SEC.9									

Design Targets

Target Name	Dip Angle (°)	Dip Dir. (°)	TVD (ft)	+N/-S (ft)	+E/-W (ft)	Northing (ft)	Easting (ft)	Latitude	Longitude
- hit/miss target									
- Shape									
SHL 546°FNL, 712°FV	0.00	0.00	1.0	0.0	0.0	1,402,118.60	3,229,605.04	40.434286	-104.675167
- survey hits target center									
- Point									
BHL 470°FSL, 1625°FV	0.00	0.00	7,070.0	-9,664.5	844.9	1,392,462.78	3,230,539.80	40.407758	-104.672133
- survey misses target center by 414.4ft at 16582.0ft MD (7055.2 TVD, -9250.4 N, 839.7 E)									
- Point									

Checked By: _____ Approved By: _____ Date: _____