

# Bayswater Exploration & Production, LLC

Well Name: **Sherley F-4-9HN**

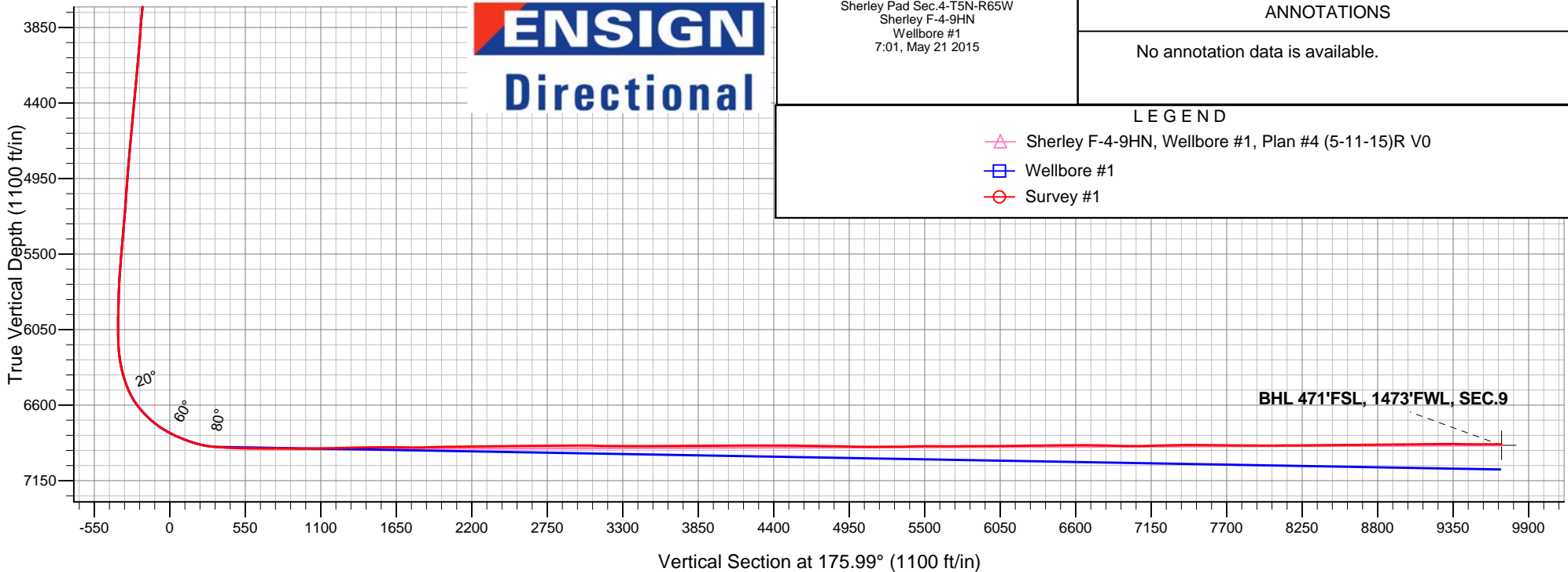
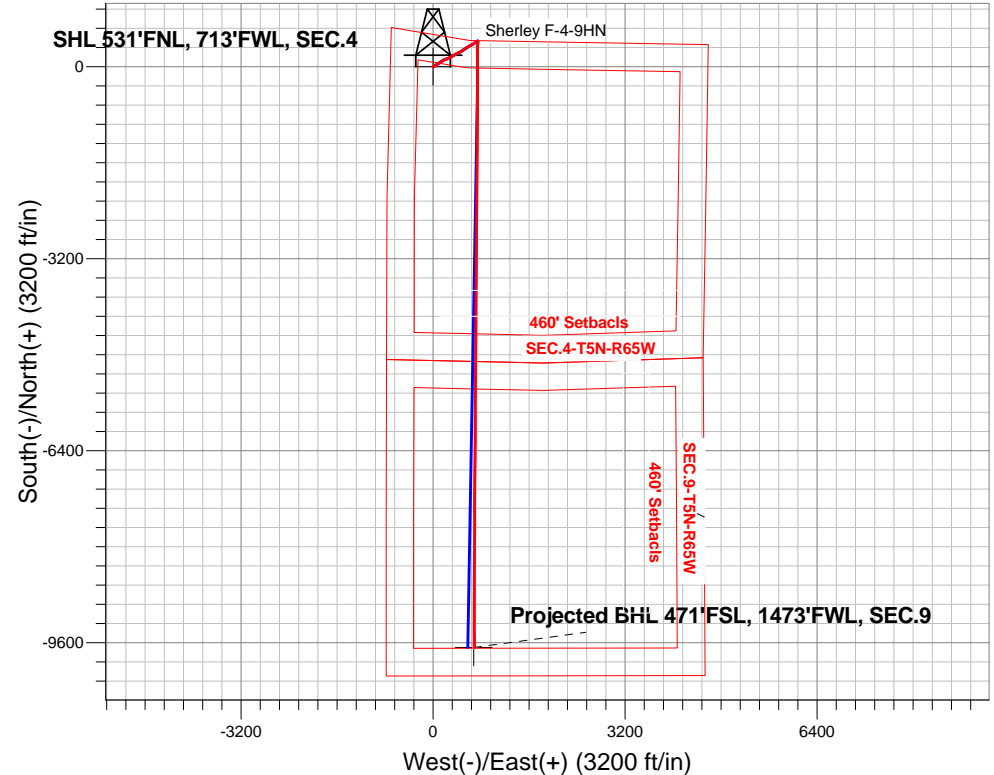
Surface Location: Sherley Pad Sec.4-T5N-R65W  
North American Datum 1983 , US State Plane 1983 , Colorado Northern Zone

Ground Elevation: 4641.2

+N/-S	+E/-W	Northing	Easting	Latitude	Longitude	Slot
0.0	0.0	1402132.80	3229605.74	40.434325	-104.675164	
RKB - 25' WELL @ 4666.2ft (RKB - 25')						

## FINAL SURVEY

**Projected Bottom Hole Location**  
**16770'MD 6885'TVD 9678'S & 691'W of SHL**  
**90 degree Incl @ 179.3 degree AZM**





# **Bayswater Exploration & Production, LLC**

**SEC.4-T5N-R65W**

**Sherley Pad Sec.4-T5N-R65W**

**Sherley F-4-9HN**

**Wellbore #1**

**Survey: Survey #1**

## **Standard Survey Report**

**06 July, 2015**



**BAYSWATER**  
**EXPLORATION & PRODUCTION, LLC**

<b>Company:</b>	Bayswater Exploration & Production, LLC	<b>Local Co-ordinate Reference:</b>	Well Sherley F-4-9HN
<b>Project:</b>	SEC.4-T5N-R65W	<b>TVD Reference:</b>	WELL @ 4666.2ft (RKB - 25')
<b>Site:</b>	Sherley Pad Sec.4-T5N-R65W	<b>MD Reference:</b>	WELL @ 4666.2ft (RKB - 25')
<b>Well:</b>	Sherley F-4-9HN	<b>North Reference:</b>	True
<b>Wellbore:</b>	Wellbore #1	<b>Survey Calculation Method:</b>	Minimum Curvature
<b>Design:</b>	Wellbore #1	<b>Database:</b>	EDMNEW

<b>Project</b>	SEC.4-T5N-R65W, Weld County, Colorado		
<b>Map System:</b>	US State Plane 1983	<b>System Datum:</b>	Mean Sea Level
<b>Geo Datum:</b>	North American Datum 1983		Using Well Reference Point
<b>Map Zone:</b>	Colorado Northern Zone		Using geodetic scale factor

<b>Site</b>	Sherley Pad Sec.4-T5N-R65W		
<b>Site Position:</b>		<b>Northing:</b>	1,402,207.92 ft
<b>From:</b>	Lat/Long	<b>Easting:</b>	3,229,612.00 ft
<b>Position Uncertainty:</b>	0.0 ft	<b>Slot Radius:</b>	"
		<b>Latitude:</b>	40° 26' 4.312 N
		<b>Longitude:</b>	104° 40' 30.500 W
		<b>Grid Convergence:</b>	0.53 °

<b>Well</b>	Sherley F-4-9HN		
<b>Well Position</b>	<b>+N/-S</b>	0.0 ft	<b>Northing:</b> 1,402,132.80 ft
	<b>+E/-W</b>	0.0 ft	<b>Easting:</b> 3,229,605.74 ft
<b>Position Uncertainty</b>	0.0 ft	<b>Wellhead Elevation:</b>	ft
		<b>Latitude:</b>	40° 26' 3.570 N
		<b>Longitude:</b>	104° 40' 30.590 W
		<b>Ground Level:</b>	4,641.2 ft

<b>Wellbore</b>	Wellbore #1				
<b>Magnetics</b>	<b>Model Name</b>	<b>Sample Date</b>	<b>Declination (°)</b>	<b>Dip Angle (°)</b>	<b>Field Strength (nT)</b>
	IGRF2010	5/11/2015	8.29	66.96	52,749

<b>Design</b>	Wellbore #1				
<b>Audit Notes:</b>					
<b>Version:</b>	1.0	<b>Phase:</b>	ACTUAL	<b>Tie On Depth:</b>	0.0
<b>Vertical Section:</b>	<b>Depth From (TVD) (ft)</b>	<b>+N/-S (ft)</b>	<b>+E/-W (ft)</b>	<b>Direction (°)</b>	
	0.0	0.0	0.0	175.99	

<b>Survey Program</b>	<b>Date</b>	6/18/2015			
<b>From (ft)</b>	<b>To (ft)</b>	<b>Survey (Wellbore)</b>	<b>Tool Name</b>	<b>Description</b>	
130.0	16,770.0	Survey #1 (Wellbore #1)	MWD	MWD - Standard	

<b>Survey</b>										
<b>Measured Depth (ft)</b>	<b>Inclination (°)</b>	<b>Azimuth (°)</b>	<b>Vertical Depth (ft)</b>	<b>+N/-S (ft)</b>	<b>+E/-W (ft)</b>	<b>Vertical Section (ft)</b>	<b>Dogleg Rate (°/100ft)</b>	<b>Build Rate (°/100ft)</b>	<b>Turn Rate (°/100ft)</b>	
0.0	0.00	0.00	0.0	0.0	0.0	0.0	0.00	0.00	0.00	
1.0	0.00	95.20	1.0	0.0	0.0	0.0	0.46	0.46	0.00	
<b>SHL 531'FNL, 713'FWL, SEC.4</b>										
130.0	0.60	95.20	130.0	-0.1	0.7	0.1	0.46	0.46	0.00	
221.0	0.60	96.40	221.0	-0.2	1.6	0.3	0.01	0.00	1.32	
312.0	0.70	90.40	312.0	-0.2	2.7	0.4	0.13	0.11	-6.59	
404.0	0.90	90.60	404.0	-0.2	3.9	0.5	0.22	0.22	0.22	
495.0	1.10	107.60	495.0	-0.5	5.5	0.9	0.39	0.22	18.68	
587.0	0.80	70.70	587.0	-0.6	6.9	1.0	0.72	-0.33	-40.11	
679.0	0.70	299.80	678.9	-0.1	7.1	0.6	1.48	-0.11	-142.28	
785.0	1.10	296.20	784.9	0.7	5.6	-0.3	0.38	0.38	-3.40	
917.0	1.10	292.90	916.9	1.8	3.3	-1.5	0.05	0.00	-2.50	
1,011.0	0.70	73.70	1,010.9	2.3	3.0	-2.1	1.81	-0.43	149.79	

<b>Company:</b>	Bayswater Exploration & Production, LLC	<b>Local Co-ordinate Reference:</b>	Well Sherley F-4-9HN
<b>Project:</b>	SEC.4-T5N-R65W	<b>TVD Reference:</b>	WELL @ 4666.2ft (RKB - 25')
<b>Site:</b>	Sherley Pad Sec.4-T5N-R65W	<b>MD Reference:</b>	WELL @ 4666.2ft (RKB - 25')
<b>Well:</b>	Sherley F-4-9HN	<b>North Reference:</b>	True
<b>Wellbore:</b>	Wellbore #1	<b>Survey Calculation Method:</b>	Minimum Curvature
<b>Design:</b>	Wellbore #1	<b>Database:</b>	EDMNEW

## Survey

Measured Depth (ft)	Inclination (°)	Azimuth (°)	Vertical Depth (ft)	+N/-S (ft)	+E/-W (ft)	Vertical Section (ft)	Dogleg Rate (°/100ft)	Build Rate (°/100ft)	Turn Rate (°/100ft)
1,106.0	2.40	64.60	1,105.9	3.3	5.3	-2.9	1.80	1.79	-9.58
1,197.0	4.30	64.20	1,196.7	5.6	10.1	-4.9	2.09	2.09	-0.44
1,289.0	7.10	62.60	1,288.2	9.7	18.3	-8.4	3.05	3.04	-1.74
1,380.0	9.20	58.80	1,378.3	16.1	29.5	-14.0	2.38	2.31	-4.18
1,472.0	9.50	51.20	1,469.1	24.6	41.7	-21.7	1.38	0.33	-8.26
1,564.0	9.80	50.10	1,559.8	34.4	53.6	-30.6	0.38	0.33	-1.20
1,655.0	9.30	56.50	1,649.5	43.4	65.7	-38.7	1.29	-0.55	7.03
1,746.0	10.60	66.00	1,739.2	50.9	79.5	-45.2	2.30	1.43	10.44
1,838.0	10.30	63.20	1,829.7	58.1	94.6	-51.3	0.64	-0.33	-3.04
1,929.0	11.70	52.40	1,919.0	67.4	109.1	-59.6	2.73	1.54	-11.87
2,021.0	10.60	47.50	2,009.3	78.8	122.8	-70.0	1.58	-1.20	-5.33
2,113.0	10.20	54.90	2,099.7	89.2	135.7	-79.5	1.51	-0.43	8.04
2,205.0	10.60	65.80	2,190.2	97.3	150.1	-86.6	2.18	0.43	11.85
2,297.0	10.60	59.80	2,280.7	105.0	165.1	-93.2	1.20	0.00	-6.52
2,389.0	11.00	68.40	2,371.0	112.5	180.6	-99.6	1.80	0.43	9.35
2,483.0	11.30	70.40	2,463.3	118.9	197.6	-104.8	0.52	0.32	2.13
2,577.0	11.40	67.00	2,555.4	125.6	214.8	-110.3	0.72	0.11	-3.62
2,670.0	12.40	69.10	2,646.4	132.8	232.6	-116.2	1.17	1.08	2.26
2,764.0	12.60	66.30	2,738.2	140.5	251.4	-122.6	0.68	0.21	-2.98
2,857.0	11.10	65.40	2,829.2	148.3	268.8	-129.2	1.63	-1.61	-0.97
2,951.0	10.60	64.00	2,921.5	155.9	284.8	-135.6	0.60	-0.53	-1.49
3,045.0	12.00	60.70	3,013.7	164.5	301.1	-143.0	1.64	1.49	-3.51
3,136.0	10.50	56.80	3,103.0	173.6	316.3	-151.1	1.85	-1.65	-4.29
3,231.0	10.90	60.00	3,196.3	182.9	331.3	-159.2	0.75	0.42	3.37
3,324.0	9.50	60.30	3,287.8	191.1	345.6	-166.4	1.51	-1.51	0.32
3,417.0	10.50	54.00	3,379.4	199.8	359.2	-174.2	1.59	1.08	-6.77
3,512.0	10.20	64.20	3,472.9	208.6	373.7	-181.9	1.95	-0.32	10.74
3,605.0	10.70	62.50	3,564.4	216.2	388.8	-188.4	0.63	0.54	-1.83
3,698.0	12.00	62.80	3,655.5	224.6	405.1	-195.7	1.40	1.40	0.32
3,791.0	12.70	61.40	3,746.4	233.9	422.6	-203.8	0.82	0.75	-1.51
3,886.0	11.00	63.70	3,839.4	242.9	439.9	-211.5	1.86	-1.79	2.42
3,980.0	11.10	65.40	3,931.6	250.6	456.2	-218.1	0.36	0.11	1.81
4,075.0	10.50	58.80	4,024.9	258.9	471.9	-225.3	1.45	-0.63	-6.95
4,169.0	9.80	57.70	4,117.5	267.6	486.0	-233.0	0.77	-0.74	-1.17
4,262.0	10.60	49.40	4,209.0	277.4	499.2	-241.8	1.80	0.86	-8.92
4,357.0	11.00	58.80	4,302.3	287.8	513.6	-251.2	1.90	0.42	9.89
4,452.0	10.40	57.20	4,395.7	297.2	528.5	-259.5	0.70	-0.63	-1.68
4,545.0	11.40	53.50	4,487.0	307.2	543.0	-268.5	1.31	1.08	-3.98
4,639.0	10.60	57.90	4,579.3	317.3	557.8	-277.5	1.23	-0.85	4.68
4,732.0	10.60	62.30	4,670.7	325.8	572.6	-285.0	0.87	0.00	4.73
4,826.0	11.30	58.10	4,763.0	334.7	588.1	-292.8	1.13	0.74	-4.47
4,921.0	9.60	54.70	4,856.4	344.2	602.4	-301.2	1.90	-1.79	-3.58
5,014.0	10.90	61.00	4,947.9	352.9	616.5	-309.0	1.84	1.40	6.77
5,107.0	9.80	62.10	5,039.4	360.9	631.1	-315.9	1.20	-1.18	1.18
5,202.0	10.50	61.60	5,132.9	368.8	645.9	-322.7	0.74	0.74	-0.53
5,296.0	9.80	62.50	5,225.4	376.6	660.5	-329.5	0.76	-0.74	0.96
5,389.0	9.80	57.00	5,317.1	384.5	674.2	-336.5	1.01	0.00	-5.91
5,484.0	9.80	53.80	5,410.7	393.7	687.5	-344.7	0.57	0.00	-3.37
5,578.0	9.50	55.40	5,503.4	402.8	700.3	-352.9	0.43	-0.32	1.70
5,672.0	8.20	48.20	5,596.2	411.7	711.7	-361.0	1.81	-1.38	-7.66
5,767.0	6.40	60.70	5,690.5	418.8	721.4	-367.4	2.52	-1.89	13.16
5,860.0	5.40	63.20	5,783.0	423.3	729.8	-371.3	1.11	-1.08	2.69
5,954.0	3.10	62.10	5,876.7	426.5	736.0	-374.0	2.45	-2.45	-1.17
6,048.0	2.30	69.00	5,970.6	428.4	740.0	-375.6	0.92	-0.85	7.34

<b>Company:</b>	Bayswater Exploration & Production, LLC	<b>Local Co-ordinate Reference:</b>	Well Sherley F-4-9HN
<b>Project:</b>	SEC.4-T5N-R65W	<b>TVD Reference:</b>	WELL @ 4666.2ft (RKB - 25')
<b>Site:</b>	Sherley Pad Sec.4-T5N-R65W	<b>MD Reference:</b>	WELL @ 4666.2ft (RKB - 25')
<b>Well:</b>	Sherley F-4-9HN	<b>North Reference:</b>	True
<b>Wellbore:</b>	Wellbore #1	<b>Survey Calculation Method:</b>	Minimum Curvature
<b>Design:</b>	Wellbore #1	<b>Database:</b>	EDMNEW

Survey

Measured Depth (ft)	Inclination (°)	Azimuth (°)	Vertical Depth (ft)	+N/-S (ft)	+E/-W (ft)	Vertical Section (ft)	Dogleg Rate (°/100ft)	Build Rate (°/100ft)	Turn Rate (°/100ft)
6,142.0	2.00	91.30	6,064.6	429.0	743.4	-376.0	0.94	-0.32	23.72
6,189.0	1.80	124.90	6,111.5	428.6	744.8	-375.5	2.37	-0.43	71.49
6,236.0	2.40	155.80	6,158.5	427.3	745.9	-374.1	2.68	1.28	65.74
6,283.0	4.90	170.40	6,205.4	424.4	746.6	-371.1	5.63	5.32	31.06
6,329.0	7.90	181.10	6,251.1	419.3	746.9	-366.0	6.99	6.52	23.26
6,376.0	10.20	185.10	6,297.5	411.9	746.4	-358.7	5.07	4.89	8.51
6,424.0	13.40	186.40	6,344.5	402.1	745.4	-349.0	6.69	6.67	2.71
6,471.0	16.80	184.80	6,389.9	390.0	744.3	-337.0	7.29	7.23	-3.40
6,516.0	19.00	185.30	6,432.7	376.2	743.0	-323.3	4.90	4.89	1.11
6,563.0	22.20	182.30	6,476.7	359.7	742.0	-306.9	7.17	6.81	-6.38
6,609.0	26.60	185.70	6,518.6	340.8	740.6	-288.1	10.04	9.57	7.39
6,656.0	31.50	184.10	6,559.6	318.0	738.7	-265.6	10.55	10.43	-3.40
6,703.0	37.10	180.80	6,598.5	291.6	737.6	-239.3	12.55	11.91	-7.02
6,750.0	40.80	178.80	6,635.0	262.0	737.7	-209.8	8.31	7.87	-4.26
6,797.0	44.30	179.30	6,669.6	230.3	738.2	-178.1	7.48	7.45	1.06
6,844.0	47.40	179.20	6,702.4	196.5	738.7	-144.4	6.60	6.60	-0.21
6,891.0	51.30	178.80	6,733.0	160.9	739.3	-108.8	8.32	8.30	-0.85
6,938.0	55.80	181.30	6,760.9	123.1	739.3	-71.1	10.49	9.57	5.32
6,985.0	59.50	178.60	6,786.0	83.4	739.3	-31.5	9.25	7.87	-5.74
7,032.0	63.60	179.30	6,808.4	42.1	740.1	9.7	8.82	8.72	1.49
7,078.0	66.10	178.30	6,828.0	0.5	740.9	51.3	5.78	5.43	-2.17
7,125.0	68.60	179.00	6,846.1	-42.9	742.0	94.6	5.49	5.32	1.49
7,173.0	71.10	181.10	6,862.6	-87.9	741.9	139.6	6.63	5.21	4.38
7,220.0	73.30	180.80	6,877.0	-132.7	741.2	184.2	4.72	4.68	-0.64
7,266.0	76.40	179.70	6,889.0	-177.1	741.0	228.4	7.12	6.74	-2.39
7,313.0	81.40	178.80	6,898.0	-223.2	741.6	274.5	10.80	10.64	-1.91
7,350.0	84.70	181.30	6,902.5	-259.9	741.5	311.1	11.16	8.92	6.76
7,468.0	87.30	181.40	6,910.7	-377.6	738.8	428.3	2.21	2.20	0.08
7,562.0	89.30	180.00	6,913.5	-471.5	737.6	521.9	2.60	2.13	-1.49
7,656.0	89.80	178.30	6,914.3	-565.5	739.0	615.8	1.89	0.53	-1.81
7,750.0	89.00	178.40	6,915.3	-659.4	741.7	709.7	0.86	-0.85	0.11
7,844.0	90.10	180.90	6,916.0	-753.4	742.3	803.5	2.91	1.17	2.66
7,939.0	90.40	180.00	6,915.6	-848.4	741.6	898.2	1.00	0.32	-0.95
8,033.0	89.80	181.10	6,915.4	-942.4	740.7	991.9	1.33	-0.64	1.17
8,127.0	90.70	180.20	6,915.0	-1,036.4	739.6	1,085.6	1.35	0.96	-0.96
8,221.0	91.10	181.10	6,913.5	-1,130.4	738.5	1,179.3	1.05	0.43	0.96
8,315.0	90.70	180.00	6,912.0	-1,224.4	737.6	1,272.9	1.25	-0.43	-1.17
8,409.0	91.00	181.10	6,910.7	-1,318.4	736.7	1,366.6	1.21	0.32	1.17
8,503.0	91.50	180.40	6,908.6	-1,412.3	735.5	1,460.3	0.91	0.53	-0.74
8,597.0	91.10	181.40	6,906.5	-1,506.3	734.0	1,553.9	1.15	-0.43	1.06
8,691.0	88.50	180.40	6,906.8	-1,600.3	732.5	1,647.6	2.96	-2.77	-1.06
8,786.0	89.30	179.50	6,908.6	-1,695.2	732.6	1,742.3	1.27	0.84	-0.95
8,880.0	91.20	180.60	6,908.2	-1,789.2	732.5	1,836.1	2.34	2.02	1.17
8,974.0	91.50	179.10	6,906.0	-1,883.2	732.8	1,929.8	1.63	0.32	-1.60
9,068.0	91.00	180.90	6,903.9	-1,977.2	732.8	2,023.6	1.99	-0.53	1.91
9,162.0	91.20	179.50	6,902.1	-2,071.2	732.5	2,117.3	1.50	0.21	-1.49
9,256.0	90.00	180.70	6,901.2	-2,165.2	732.3	2,211.1	1.81	-1.28	1.28
9,350.0	90.70	181.60	6,900.6	-2,259.1	730.4	2,304.7	1.21	0.74	0.96
9,444.0	90.80	180.90	6,899.4	-2,353.1	728.4	2,398.3	0.75	0.11	-0.74
9,537.0	90.50	180.00	6,898.3	-2,446.1	727.6	2,491.0	1.02	-0.32	-0.97
9,633.0	90.60	181.30	6,897.4	-2,542.1	726.5	2,586.7	1.36	0.10	1.35
9,727.0	90.30	180.60	6,896.6	-2,636.1	725.0	2,680.3	0.81	-0.32	-0.74
9,821.0	90.50	179.30	6,896.0	-2,730.1	725.1	2,774.1	1.40	0.21	-1.38
9,916.0	90.70	181.10	6,895.0	-2,825.0	724.7	2,868.8	1.91	0.21	1.89

<b>Company:</b>	Bayswater Exploration & Production, LLC	<b>Local Co-ordinate Reference:</b>	Well Sherley F-4-9HN
<b>Project:</b>	SEC.4-T5N-R65W	<b>TVD Reference:</b>	WELL @ 4666.2ft (RKB - 25')
<b>Site:</b>	Sherley Pad Sec.4-T5N-R65W	<b>MD Reference:</b>	WELL @ 4666.2ft (RKB - 25')
<b>Well:</b>	Sherley F-4-9HN	<b>North Reference:</b>	True
<b>Wellbore:</b>	Wellbore #1	<b>Survey Calculation Method:</b>	Minimum Curvature
<b>Design:</b>	Wellbore #1	<b>Database:</b>	EDMNEW

Survey

Measured Depth (ft)	Inclination (°)	Azimuth (°)	Vertical Depth (ft)	+N/-S (ft)	+E/-W (ft)	Vertical Section (ft)	Dogleg Rate (°/100ft)	Build Rate (°/100ft)	Turn Rate (°/100ft)
10,009.0	89.70	178.60	6,894.7	-2,918.0	725.0	2,961.6	2.90	-1.08	-2.69
10,104.0	89.30	181.10	6,895.5	-3,013.0	725.2	3,056.4	2.66	-0.42	2.63
10,199.0	89.30	180.20	6,896.7	-3,108.0	724.1	3,151.0	0.95	0.00	-0.95
10,293.0	89.30	182.10	6,897.8	-3,202.0	722.3	3,244.6	2.02	0.00	2.02
10,387.0	89.30	180.60	6,898.9	-3,295.9	720.0	3,338.2	1.60	0.00	-1.60
10,479.0	90.70	180.60	6,898.9	-3,387.9	719.1	3,429.9	1.52	1.52	0.00
10,571.0	90.80	179.30	6,897.7	-3,479.9	719.2	3,521.7	1.42	0.11	-1.41
10,662.0	90.10	180.90	6,897.0	-3,570.9	719.0	3,612.5	1.92	-0.77	1.76
10,754.0	90.30	180.40	6,896.7	-3,662.9	718.0	3,704.1	0.59	0.22	-0.54
10,846.0	90.50	179.10	6,896.1	-3,754.9	718.4	3,795.9	1.43	0.22	-1.41
10,937.0	89.30	179.70	6,896.2	-3,845.9	719.3	3,886.8	1.47	-1.32	0.66
11,029.0	90.30	181.10	6,896.5	-3,937.9	718.7	3,978.5	1.87	1.09	1.52
11,120.0	90.60	180.00	6,895.8	-4,028.9	717.8	4,069.2	1.25	0.33	-1.21
11,211.0	90.20	181.60	6,895.2	-4,119.9	716.5	4,159.9	1.81	-0.44	1.76
11,302.0	90.50	180.20	6,894.6	-4,210.9	715.1	4,250.5	1.57	0.33	-1.54
11,394.0	89.60	181.80	6,894.6	-4,302.8	713.5	4,342.2	2.00	-0.98	1.74
11,486.0	89.90	182.10	6,895.0	-4,394.8	710.4	4,433.7	0.46	0.33	0.33
11,577.0	89.60	180.40	6,895.4	-4,485.8	708.4	4,524.3	1.90	-0.33	-1.87
11,669.0	89.60	179.70	6,896.0	-4,577.8	708.3	4,616.1	0.76	0.00	-0.76
11,760.0	88.80	179.50	6,897.3	-4,668.7	708.9	4,706.9	0.91	-0.88	-0.22
11,852.0	89.00	180.40	6,899.0	-4,760.7	709.0	4,798.6	1.00	0.22	0.98
11,943.0	88.90	179.00	6,900.7	-4,851.7	709.5	4,889.4	1.54	-0.11	-1.54
12,034.0	88.80	179.70	6,902.5	-4,942.7	710.5	4,980.3	0.78	-0.11	0.77
12,126.0	89.60	182.00	6,903.8	-5,034.7	709.1	5,071.9	2.65	0.87	2.50
12,217.0	90.30	181.10	6,903.9	-5,125.6	706.7	5,162.5	1.25	0.77	-0.99
12,310.0	90.60	180.60	6,903.2	-5,218.6	705.3	5,255.2	0.63	0.32	-0.54
12,401.0	90.70	179.90	6,902.1	-5,309.6	704.9	5,345.9	0.78	0.11	-0.77
12,493.0	91.30	179.70	6,900.5	-5,401.6	705.2	5,437.7	0.69	0.65	-0.22
12,584.0	89.60	181.10	6,899.8	-5,492.6	704.6	5,528.4	2.42	-1.87	1.54
12,676.0	89.90	180.70	6,900.2	-5,584.6	703.2	5,620.1	0.54	0.33	-0.43
12,767.0	90.10	179.70	6,900.2	-5,675.6	702.8	5,710.8	1.12	0.22	-1.10
12,859.0	90.60	179.10	6,899.7	-5,767.6	703.8	5,802.6	0.85	0.54	-0.65
12,950.0	89.70	180.90	6,899.4	-5,858.5	703.8	5,893.4	2.21	-0.99	1.98
13,042.0	90.60	180.40	6,899.2	-5,950.5	702.8	5,985.1	1.12	0.98	-0.54
13,136.0	91.30	179.70	6,897.6	-6,044.5	702.7	6,078.9	1.05	0.74	-0.74
13,230.0	90.30	180.60	6,896.3	-6,138.5	702.4	6,172.6	1.43	-1.06	0.96
13,324.0	90.80	179.90	6,895.4	-6,232.5	702.0	6,266.3	0.92	0.53	-0.74
13,418.0	90.00	181.30	6,894.7	-6,326.5	701.0	6,360.0	1.72	-0.85	1.49
13,512.0	91.60	180.40	6,893.4	-6,420.5	699.6	6,453.7	1.95	1.70	-0.96
13,606.0	90.00	180.40	6,892.1	-6,514.5	699.0	6,547.4	1.70	-1.70	0.00
13,700.0	90.20	180.00	6,892.0	-6,608.5	698.7	6,641.1	0.48	0.21	-0.43
13,794.0	88.80	179.70	6,892.8	-6,702.5	698.9	6,734.9	1.52	-1.49	-0.32
13,889.0	88.60	181.10	6,894.9	-6,797.4	698.2	6,829.6	1.49	-0.21	1.47
13,983.0	88.90	181.60	6,897.0	-6,891.4	696.0	6,923.2	0.62	0.32	0.53
14,076.0	89.70	182.10	6,898.1	-6,984.3	693.0	7,015.7	1.01	0.86	0.54
14,170.0	91.00	180.20	6,897.5	-7,078.3	691.1	7,109.3	2.45	1.38	-2.02
14,264.0	91.50	180.90	6,895.5	-7,172.3	690.2	7,203.0	0.91	0.53	0.74
14,358.0	91.70	180.00	6,892.9	-7,266.2	689.5	7,296.6	0.98	0.21	-0.96
14,452.0	90.90	179.50	6,890.7	-7,360.2	689.9	7,390.4	1.00	-0.85	-0.53
14,546.0	89.10	178.60	6,890.7	-7,454.2	691.5	7,484.3	2.14	-1.91	-0.96
14,640.0	89.40	180.20	6,892.0	-7,548.2	692.4	7,578.1	1.73	0.32	1.70
14,734.0	89.50	178.80	6,892.9	-7,642.2	693.3	7,671.9	1.49	0.11	-1.49
14,828.0	89.60	180.40	6,893.6	-7,736.1	693.9	7,765.7	1.71	0.11	1.70
14,923.0	89.80	179.90	6,894.1	-7,831.1	693.7	7,860.5	0.57	0.21	-0.53

<b>Company:</b>	Bayswater Exploration & Production, LLC	<b>Local Co-ordinate Reference:</b>	Well Sherley F-4-9HN
<b>Project:</b>	SEC.4-T5N-R65W	<b>TVD Reference:</b>	WELL @ 4666.2ft (RKB - 25')
<b>Site:</b>	Sherley Pad Sec.4-T5N-R65W	<b>MD Reference:</b>	WELL @ 4666.2ft (RKB - 25')
<b>Well:</b>	Sherley F-4-9HN	<b>North Reference:</b>	True
<b>Wellbore:</b>	Wellbore #1	<b>Survey Calculation Method:</b>	Minimum Curvature
<b>Design:</b>	Wellbore #1	<b>Database:</b>	EDMNEW

Survey										
Measured Depth (ft)	Inclination (°)	Azimuth (°)	Vertical Depth (ft)	+N/-S (ft)	+E/-W (ft)	Vertical Section (ft)	Dogleg Rate (°/100ft)	Build Rate (°/100ft)	Turn Rate (°/100ft)	
15,017.0	89.70	181.30	6,894.5	-7,925.1	692.7	7,954.2	1.49	-0.11	1.49	
15,111.0	90.00	181.80	6,894.8	-8,019.1	690.1	8,047.7	0.62	0.32	0.53	
15,205.0	90.50	179.90	6,894.3	-8,113.1	688.8	8,141.4	2.09	0.53	-2.02	
15,299.0	90.40	180.40	6,893.6	-8,207.1	688.5	8,235.1	0.54	-0.11	0.53	
15,394.0	90.70	179.90	6,892.7	-8,302.1	688.3	8,329.9	0.61	0.32	-0.53	
15,488.0	91.00	179.70	6,891.3	-8,396.1	688.6	8,423.7	0.38	0.32	-0.21	
15,581.0	90.00	179.90	6,890.5	-8,489.1	688.9	8,516.5	1.10	-1.08	0.22	
15,675.0	90.00	179.70	6,890.5	-8,583.1	689.2	8,610.2	0.21	0.00	-0.21	
15,770.0	90.70	180.90	6,889.9	-8,678.1	688.7	8,705.0	1.46	0.74	1.26	
15,864.0	91.30	181.40	6,888.3	-8,772.0	686.9	8,798.6	0.83	0.64	0.53	
15,958.0	90.70	179.70	6,886.6	-8,866.0	686.0	8,892.3	1.92	-0.64	-1.81	
16,052.0	90.30	180.90	6,885.8	-8,960.0	685.5	8,986.0	1.35	-0.43	1.28	
16,147.0	89.90	179.90	6,885.6	-9,055.0	684.8	9,080.7	1.13	-0.42	-1.05	
16,242.0	90.30	180.20	6,885.5	-9,150.0	684.7	9,175.5	0.53	0.42	0.32	
16,336.0	90.70	179.30	6,884.7	-9,244.0	685.1	9,269.3	1.05	0.43	-0.96	
16,430.0	89.50	179.50	6,884.5	-9,338.0	686.1	9,363.1	1.29	-1.28	0.21	
16,524.0	90.20	178.60	6,884.7	-9,432.0	687.7	9,457.0	1.21	0.74	-0.96	
16,619.0	89.60	179.30	6,884.9	-9,526.9	689.4	9,551.8	0.97	-0.63	0.74	
16,713.0	90.00	179.30	6,885.2	-9,620.9	690.6	9,645.7	0.43	0.43	0.00	
16,770.0	90.00	179.30	6,885.2	-9,677.9	691.3	9,702.6	0.00	0.00	0.00	
BHL 470'FSL, 1460'FWL, SEC.9										

Design Targets										
Target Name	Dip Angle (°)	Dip Dir. (°)	TVD (ft)	+N/-S (ft)	+E/-W (ft)	Northing (ft)	Easting (ft)	Latitude	Longitude	
- hit/miss target										
- Shape										
SHL 531'FNL, 713'FW	0.00	0.00	1.0	0.0	0.0	1,402,132.81	3,229,605.74	40° 26' 3.570 N	104° 40' 30.590 W	
- survey hits target center										
- Point										
BHL 470'FSL, 1460'FW	0.00	0.00	6,893.0	-9,679.4	678.4	1,392,460.50	3,230,374.12	40° 24' 27.922 N	104° 40' 21.821 W	
- survey misses target center by 15.1ft at 16770.0ft MD (6885.2 TVD, -9677.9 N, 691.3 E)										
- Point										

Checked By: _____	Approved By: _____	Date: _____
-------------------	--------------------	-------------