

Bayswater Exploration & Production, LLC

Well Name: **Sherley D-4-9HN**

Surface Location: Sherley Pad Sec.4-T5N-R65W

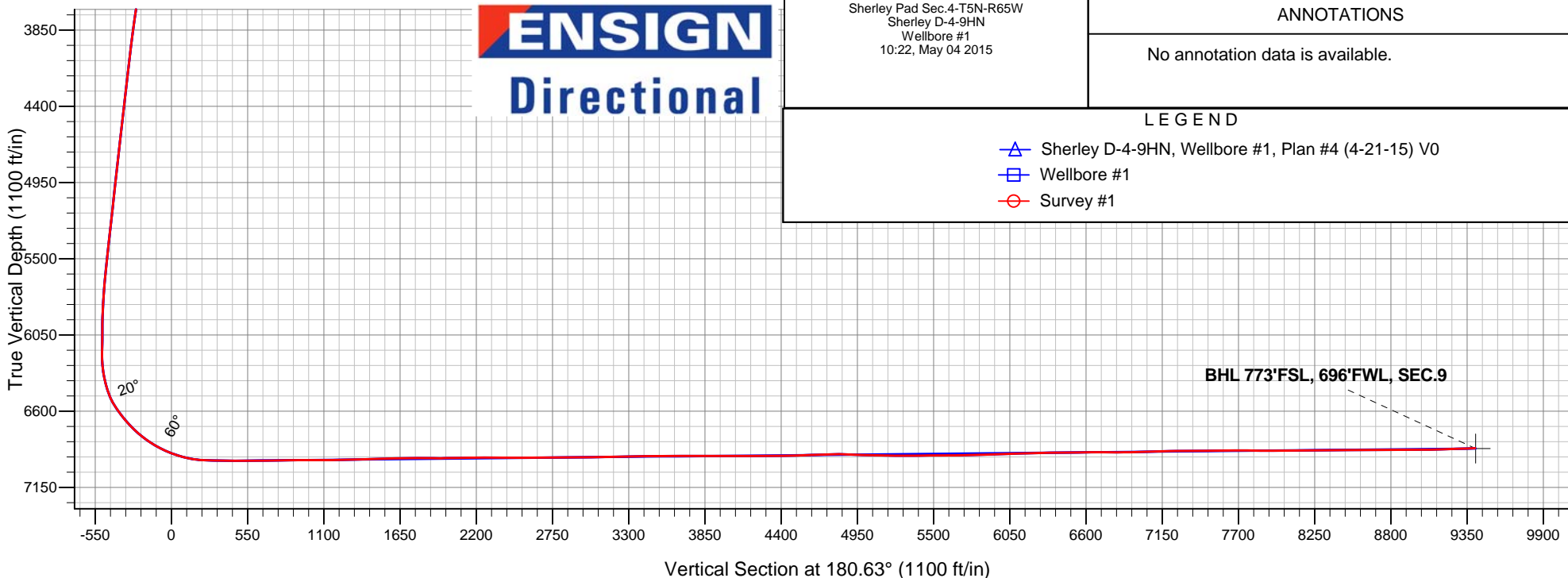
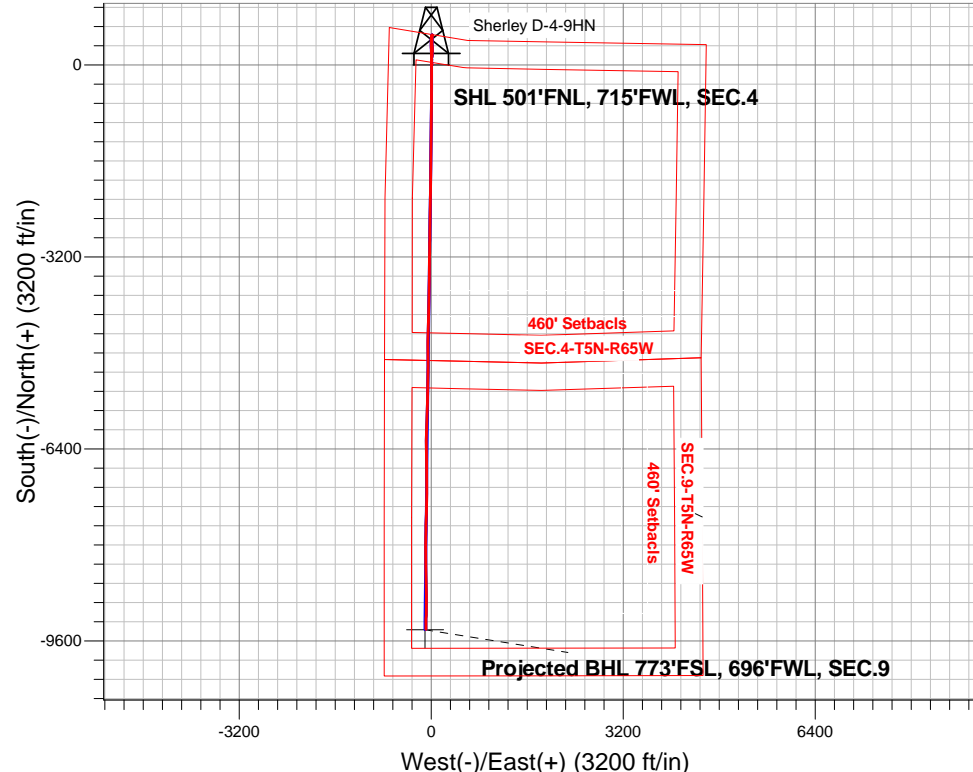
North American Datum 1983 , US State Plane 1983 , Colorado Northern Zone

Ground Elevation: 4641.2

+N/-S	+E/-W	Northing	Easting	Latitude	Longitude	Slot
0.0	0.0	1402163.06	3229608.52	40.434408	-104.675153	
RKB - 25' WELL @ 4666.2ft (RKB - 25')						

FINAL SURVEY

Projected Bottom Hole Location
16566'MD 6867'TVD 9408'S & 88'W of SHL
92.1 degree Incl @ 180.6 degree AZM



Sherley Pad Sec.4-T5N-R65W
Sherley D-4-9HN
Wellbore #1
10:22, May 04 2015

ANNOTATIONS

No annotation data is available.

LEGEND

- Sherley D-4-9HN, Wellbore #1, Plan #4 (4-21-15) V0
- Wellbore #1
- Survey #1



Bayswater Exploration & Production, LLC

SEC.4-T5N-R65W

Sherley Pad Sec.4-T5N-R65W

Sherley D-4-9HN

Wellbore #1

Survey: Survey #1

Standard Survey Report

04 May, 2015



BAYSWATER
EXPLORATION & PRODUCTION, LLC

Company:	Bayswater Exploration & Production, LLC	Local Co-ordinate Reference:	Well Sherley D-4-9HN
Project:	SEC.4-T5N-R65W	TVD Reference:	WELL @ 4666.2ft (RKB - 25')
Site:	Sherley Pad Sec.4-T5N-R65W	MD Reference:	WELL @ 4666.2ft (RKB - 25')
Well:	Sherley D-4-9HN	North Reference:	True
Wellbore:	Wellbore #1	Survey Calculation Method:	Minimum Curvature
Design:	Wellbore #1	Database:	Landmark

Project	SEC.4-T5N-R65W, Weld County, Colorado		
Map System:	US State Plane 1983	System Datum:	Mean Sea Level
Geo Datum:	North American Datum 1983		Using Well Reference Point
Map Zone:	Colorado Northern Zone		Using geodetic scale factor

Site		Sherley Pad Sec.4-T5N-R65W			
Site Position:		Northing:	1,402,207.92 ft	Latitude:	40.434531
From:	Lat/Long	Easting:	3,229,612.00 ft	Longitude:	-104.675139
Position Uncertainty:	0.0 ft	Slot Radius:	"	Grid Convergence:	0.53 °

Well	Sherley D-4-9HN					
Well Position	+N/-S	0.0 ft	Northing:	1,402,163.06 ft	Latitude:	40.434408
	+E/-W	0.0 ft	Easting:	3,229,608.52 ft	Longitude:	-104.675153
Position Uncertainty		0.0 ft	Wellhead Elevation:	ft	Ground Level:	4,641.2 ft

Wellbore	Wellbore #1				
Magnetics	Model Name	Sample Date	Declination (°)	Dip Angle (°)	Field Strength (nT)
	IGRF2010	4/21/2015	8.30	66.96	52,754

Design	Wellbore #1				
Audit Notes:					
Version:	1.0	Phase:	ACTUAL	Tie On Depth:	0.0
Vertical Section:	Depth From (TVD) (ft)	+N/-S (ft)	+E/-W (ft)	Direction (°)	
	0.0	0.0	0.0	180.63	

Survey Program	Date	5/4/2015			
From (ft)	To (ft)	Survey (Wellbore)	Tool Name	Description	
160.0	16,566.0	Survey #1 (Wellbore #1)	MWD	MWD - Standard	

Survey										
Measured Depth (ft)	Inclination (°)	Azimuth (°)	Vertical Depth (ft)	+N/-S (ft)	+E/-W (ft)	Vertical Section (ft)	Dogleg Rate (°/100ft)	Build Rate (°/100ft)	Turn Rate (°/100ft)	
0.0	0.00	0.00	0.0	0.0	0.0	0.0	0.00	0.00	0.00	
1.0	0.01	27.00	1.0	0.0	0.0	0.0	0.63	0.63	0.00	
SHL 501'FNL, 715'FWL, SEC.4										
160.0	1.00	27.00	160.0	1.2	0.6	-1.3	0.63	0.63	0.00	
251.0	0.90	41.40	251.0	2.5	1.5	-2.5	0.28	-0.11	15.82	
343.0	1.00	38.20	343.0	3.7	2.4	-3.7	0.12	0.11	-3.48	
434.0	1.10	46.60	434.0	4.9	3.6	-4.9	0.20	0.11	9.23	
526.0	1.60	54.20	525.9	6.2	5.3	-6.3	0.58	0.54	8.26	
618.0	2.10	47.90	617.9	8.1	7.5	-8.2	0.59	0.54	-6.85	
710.0	1.60	49.50	709.8	10.1	9.8	-10.2	0.55	-0.54	1.74	
779.0	0.50	78.10	778.8	10.8	10.8	-10.9	1.72	-1.59	41.45	
917.0	0.70	204.30	916.8	10.1	11.0	-10.3	0.78	0.14	91.45	
1,012.0	0.70	195.70	1,011.8	9.0	10.6	-9.2	0.11	0.00	-9.05	

Company:	Bayswater Exploration & Production, LLC	Local Co-ordinate Reference:	Well Sherley D-4-9HN
Project:	SEC.4-T5N-R65W	TVD Reference:	WELL @ 4666.2ft (RKB - 25')
Site:	Sherley Pad Sec.4-T5N-R65W	MD Reference:	WELL @ 4666.2ft (RKB - 25')
Well:	Sherley D-4-9HN	North Reference:	True
Wellbore:	Wellbore #1	Survey Calculation Method:	Minimum Curvature
Design:	Wellbore #1	Database:	Landmark

Survey

Measured Depth (ft)	Inclination (°)	Azimuth (°)	Vertical Depth (ft)	+N/-S (ft)	+E/-W (ft)	Vertical Section (ft)	Dogleg Rate (°/100ft)	Build Rate (°/100ft)	Turn Rate (°/100ft)
1,106.0	0.50	218.70	1,105.8	8.2	10.2	-8.3	0.33	-0.21	24.47
1,197.0	0.80	263.00	1,196.8	7.8	9.4	-7.9	0.62	0.33	48.68
1,289.0	0.40	278.10	1,288.8	7.8	8.4	-7.8	0.46	-0.43	16.41
1,381.0	0.60	278.70	1,380.8	7.9	7.6	-8.0	0.22	0.22	0.65
1,472.0	1.10	357.10	1,471.8	8.8	7.1	-8.9	1.26	0.55	86.15
1,564.0	1.30	358.80	1,563.8	10.7	7.0	-10.8	0.22	0.22	1.85
1,655.0	3.10	350.60	1,654.7	14.2	6.6	-14.3	2.00	1.98	-9.01
1,746.0	4.20	355.10	1,745.5	19.9	5.9	-20.0	1.25	1.21	4.95
1,838.0	4.50	9.40	1,837.2	26.9	6.2	-26.9	1.22	0.33	15.54
1,929.0	5.80	5.70	1,927.9	35.0	7.3	-35.0	1.47	1.43	-4.07
2,021.0	7.80	357.90	2,019.2	45.8	7.5	-45.9	2.39	2.17	-8.48
2,113.0	7.60	350.00	2,110.4	58.1	6.2	-58.1	1.17	-0.22	-8.59
2,205.0	7.70	7.60	2,201.6	70.2	6.0	-70.2	2.54	0.11	19.13
2,297.0	7.70	3.00	2,292.8	82.4	7.1	-82.5	0.67	0.00	-5.00
2,389.0	7.10	0.30	2,384.0	94.3	7.4	-94.3	0.75	-0.65	-2.93
2,483.0	7.00	354.80	2,477.3	105.8	7.0	-105.8	0.73	-0.11	-5.85
2,577.0	7.30	9.90	2,570.6	117.4	7.5	-117.4	2.02	0.32	16.06
2,670.0	7.50	10.90	2,662.8	129.1	9.6	-129.2	0.26	0.22	1.08
2,764.0	7.50	8.70	2,756.0	141.2	11.7	-141.4	0.31	0.00	-2.34
2,857.0	6.90	4.60	2,848.2	152.8	13.1	-152.9	0.85	-0.65	-4.41
2,951.0	6.50	5.30	2,941.6	163.7	14.0	-163.9	0.43	-0.43	0.74
3,045.0	6.10	5.30	3,035.0	174.0	15.0	-174.2	0.43	-0.43	0.00
3,136.0	6.90	357.10	3,125.5	184.3	15.2	-184.4	1.34	0.88	-9.01
3,231.0	7.30	4.80	3,219.7	196.0	15.4	-196.1	1.09	0.42	8.11
3,324.0	6.80	4.10	3,312.0	207.4	16.3	-207.5	0.55	-0.54	-0.75
3,418.0	6.20	4.30	3,405.4	218.0	17.0	-218.2	0.64	-0.64	0.21
3,512.0	7.90	3.00	3,498.7	229.5	17.8	-229.7	1.82	1.81	-1.38
3,605.0	7.30	0.20	3,590.9	241.8	18.1	-242.0	0.76	-0.65	-3.01
3,699.0	7.70	1.50	3,684.1	254.1	18.3	-254.2	0.46	0.43	1.38
3,791.0	7.50	358.10	3,775.3	266.2	18.3	-266.4	0.53	-0.22	-3.70
3,886.0	7.60	357.60	3,869.5	278.7	17.8	-278.9	0.13	0.11	-0.53
3,980.0	7.20	357.20	3,962.7	290.8	17.2	-291.0	0.43	-0.43	-0.43
4,075.0	6.80	354.10	4,057.0	302.3	16.4	-302.5	0.58	-0.42	-3.26
4,169.0	6.70	353.90	4,150.3	313.3	15.2	-313.5	0.11	-0.11	-0.21
4,263.0	6.00	350.00	4,243.7	323.6	13.8	-323.7	0.87	-0.74	-4.15
4,357.0	7.00	356.70	4,337.1	334.2	12.6	-334.3	1.33	1.06	7.13
4,452.0	6.60	355.70	4,431.5	345.4	11.9	-345.5	0.44	-0.42	-1.05
4,545.0	7.20	4.80	4,523.8	356.5	11.9	-356.6	1.34	0.65	9.78
4,639.0	6.30	4.10	4,617.1	367.5	12.8	-367.7	0.96	-0.96	-0.74
4,732.0	5.80	2.70	4,709.6	377.3	13.4	-377.4	0.56	-0.54	-1.51
4,826.0	6.00	359.50	4,803.1	387.0	13.6	-387.1	0.41	0.21	-3.40
4,921.0	7.00	359.00	4,897.5	397.7	13.4	-397.9	1.05	1.05	-0.53
5,014.0	6.40	0.20	4,989.9	408.6	13.3	-408.7	0.66	-0.65	1.29
5,107.0	5.60	357.10	5,082.4	418.3	13.1	-418.4	0.93	-0.86	-3.33
5,202.0	6.90	4.30	5,176.8	428.6	13.3	-428.7	1.60	1.37	7.58
5,296.0	5.90	2.70	5,270.2	439.1	14.0	-439.2	1.08	-1.06	-1.70
5,389.0	6.60	351.80	5,362.7	449.1	13.4	-449.3	1.48	0.75	-11.72
5,484.0	6.20	7.40	5,457.1	459.6	13.3	-459.7	1.87	-0.42	16.42
5,578.0	6.90	1.50	5,550.5	470.3	14.1	-470.4	1.03	0.74	-6.28
5,672.0	4.70	5.00	5,644.0	479.8	14.6	-479.9	2.37	-2.34	3.72
5,767.0	3.70	358.10	5,738.7	486.7	14.8	-486.9	1.18	-1.05	-7.26
5,860.0	3.30	343.30	5,831.6	492.3	14.0	-492.4	1.06	-0.43	-15.91
5,954.0	1.90	1.50	5,925.5	496.4	13.2	-496.6	1.71	-1.49	19.36
6,048.0	0.70	21.80	6,019.4	498.5	13.5	-498.7	1.35	-1.28	21.60

Company:	Bayswater Exploration & Production, LLC	Local Co-ordinate Reference:	Well Sherley D-4-9HN
Project:	SEC.4-T5N-R65W	TVD Reference:	WELL @ 4666.2ft (RKB - 25')
Site:	Sherley Pad Sec.4-T5N-R65W	MD Reference:	WELL @ 4666.2ft (RKB - 25')
Well:	Sherley D-4-9HN	North Reference:	True
Wellbore:	Wellbore #1	Survey Calculation Method:	Minimum Curvature
Design:	Wellbore #1	Database:	Landmark

Survey

Measured Depth (ft)	Inclination (°)	Azimuth (°)	Vertical Depth (ft)	+N/-S (ft)	+E/-W (ft)	Vertical Section (ft)	Dogleg Rate (°/100ft)	Build Rate (°/100ft)	Turn Rate (°/100ft)
6,142.0	0.60	342.60	6,113.4	499.5	13.6	-499.7	0.47	-0.11	-41.70
6,189.0	0.70	340.50	6,160.4	500.0	13.4	-500.2	0.22	0.21	-4.47
6,236.0	0.40	258.10	6,207.4	500.3	13.1	-500.4	1.61	-0.64	-175.32
6,283.0	4.00	197.80	6,254.4	498.7	12.5	-498.8	8.12	7.66	-128.30
6,329.0	8.00	195.50	6,300.1	494.1	11.1	-494.2	8.71	8.70	-5.00
6,380.0	11.30	195.50	6,350.4	485.8	8.8	-485.9	6.47	6.47	0.00
6,424.0	13.90	191.80	6,393.3	476.5	6.6	-476.5	6.18	5.91	-8.41
6,471.0	17.30	190.40	6,438.6	464.1	4.2	-464.1	7.28	7.23	-2.98
6,517.0	21.40	189.40	6,482.0	449.1	1.6	-449.1	8.94	8.91	-2.17
6,564.0	26.90	184.10	6,524.9	430.0	-0.6	-430.0	12.57	11.70	-11.28
6,609.0	32.40	181.80	6,563.9	407.8	-1.7	-407.7	12.48	12.22	-5.11
6,656.0	36.70	180.00	6,602.7	381.1	-2.1	-381.1	9.40	9.15	-3.83
6,703.0	38.90	179.00	6,639.8	352.3	-1.8	-352.3	4.86	4.68	-2.13
6,750.0	41.10	178.30	6,675.8	322.1	-1.1	-322.1	4.78	4.68	-1.49
6,797.0	43.70	177.60	6,710.5	290.5	0.0	-290.5	5.62	5.53	-1.49
6,844.0	47.00	176.90	6,743.5	257.1	1.6	-257.1	7.10	7.02	-1.49
6,891.0	50.00	177.40	6,774.7	221.9	3.4	-221.9	6.43	6.38	1.06
6,938.0	54.30	179.00	6,803.5	184.8	4.5	-184.9	9.54	9.15	3.40
6,985.0	58.10	179.70	6,829.6	145.8	5.0	-145.8	8.18	8.09	1.49
7,032.0	60.00	179.70	6,853.8	105.5	5.2	-105.5	4.04	4.04	0.00
7,078.0	63.80	179.20	6,875.5	64.9	5.6	-65.0	8.32	8.26	-1.09
7,125.0	68.00	179.50	6,894.7	22.0	6.1	-22.1	8.96	8.94	0.64
7,173.0	71.10	180.40	6,911.4	-22.9	6.1	22.9	6.69	6.46	1.88
7,220.0	73.70	180.60	6,925.6	-67.7	5.7	67.7	5.55	5.53	0.43
7,266.0	76.90	180.00	6,937.3	-112.2	5.5	112.2	7.07	6.96	-1.30
7,313.0	81.30	180.00	6,946.2	-158.4	5.5	158.3	9.36	9.36	0.00
7,361.0	85.40	179.50	6,951.7	-206.0	5.7	206.0	8.60	8.54	-1.04
7,437.0	89.00	179.70	6,955.5	-281.9	6.2	281.8	4.74	4.74	0.26
7,531.0	89.60	180.40	6,956.6	-375.9	6.1	375.8	0.98	0.64	0.74
7,625.0	89.70	180.00	6,957.2	-469.9	5.8	469.8	0.44	0.11	-0.43
7,719.0	89.40	182.10	6,957.9	-563.9	4.1	563.8	2.26	-0.32	2.23
7,814.0	91.40	180.70	6,957.3	-658.9	1.8	658.8	2.57	2.11	-1.47
7,908.0	91.10	180.40	6,955.2	-752.8	0.9	752.8	0.45	-0.32	-0.32
8,002.0	90.00	180.70	6,954.3	-846.8	0.0	846.8	1.21	-1.17	0.32
8,096.0	90.70	181.60	6,953.7	-940.8	-1.9	940.8	1.21	0.74	0.96
8,190.0	90.40	180.40	6,952.8	-1,034.8	-3.6	1,034.7	1.32	-0.32	-1.28
8,284.0	90.80	180.20	6,951.8	-1,128.8	-4.1	1,128.7	0.48	0.43	-0.21
8,378.0	90.70	179.90	6,950.6	-1,222.8	-4.1	1,222.7	0.34	-0.11	-0.32
8,472.0	90.60	179.00	6,949.5	-1,316.7	-3.2	1,316.7	0.96	-0.11	-0.96
8,566.0	92.00	180.40	6,947.4	-1,410.7	-2.7	1,410.7	2.11	1.49	1.49
8,661.0	92.30	179.90	6,943.8	-1,505.6	-3.0	1,505.6	0.61	0.32	-0.53
8,755.0	91.40	180.40	6,940.8	-1,599.6	-3.2	1,599.5	1.10	-0.96	0.53
8,849.0	90.70	181.60	6,939.1	-1,693.6	-4.9	1,693.5	1.48	-0.74	1.28
8,943.0	89.40	181.60	6,939.0	-1,787.5	-7.5	1,787.5	1.38	-1.38	0.00
9,036.0	89.30	181.30	6,940.1	-1,880.5	-9.9	1,880.5	0.34	-0.11	-0.32
9,131.0	91.40	180.60	6,939.5	-1,975.5	-11.4	1,975.5	2.33	2.21	-0.74
9,225.0	91.20	180.00	6,937.4	-2,069.4	-11.9	2,069.5	0.67	-0.21	-0.64
9,319.0	90.70	181.40	6,935.8	-2,163.4	-13.1	2,163.4	1.58	-0.53	1.49
9,413.0	90.40	181.80	6,934.9	-2,257.4	-15.7	2,257.4	0.53	-0.32	0.43
9,507.0	90.00	181.40	6,934.6	-2,351.3	-18.3	2,351.4	0.60	-0.43	-0.43
9,602.0	89.50	181.10	6,935.0	-2,446.3	-20.4	2,446.4	0.61	-0.53	-0.32
9,696.0	89.70	180.60	6,935.6	-2,540.3	-21.8	2,540.4	0.57	0.21	-0.53
9,790.0	90.30	180.90	6,935.6	-2,634.3	-23.0	2,634.4	0.71	0.64	0.32
9,885.0	89.90	180.70	6,935.5	-2,729.3	-24.3	2,729.4	0.47	-0.42	-0.21

Company:	Bayswater Exploration & Production, LLC	Local Co-ordinate Reference:	Well Sherley D-4-9HN
Project:	SEC.4-T5N-R65W	TVD Reference:	WELL @ 4666.2ft (RKB - 25')
Site:	Sherley Pad Sec.4-T5N-R65W	MD Reference:	WELL @ 4666.2ft (RKB - 25')
Well:	Sherley D-4-9HN	North Reference:	True
Wellbore:	Wellbore #1	Survey Calculation Method:	Minimum Curvature
Design:	Wellbore #1	Database:	Landmark

Survey

Measured Depth (ft)	Inclination (°)	Azimuth (°)	Vertical Depth (ft)	+N/-S (ft)	+E/-W (ft)	Vertical Section (ft)	Dogleg Rate (°/100ft)	Build Rate (°/100ft)	Turn Rate (°/100ft)
9,978.0	90.20	180.00	6,935.4	-2,822.3	-24.9	2,822.4	0.82	0.32	-0.75
10,073.0	91.70	179.90	6,933.8	-2,917.3	-24.8	2,917.4	1.58	1.58	-0.11
10,168.0	90.70	181.10	6,931.8	-3,012.2	-25.7	3,012.3	1.64	-1.05	1.26
10,262.0	90.80	181.30	6,930.6	-3,106.2	-27.6	3,106.3	0.24	0.11	0.21
10,356.0	91.00	180.70	6,929.1	-3,200.2	-29.3	3,200.3	0.67	0.21	-0.64
10,448.0	91.00	180.70	6,927.5	-3,292.2	-30.4	3,292.3	0.00	0.00	0.00
10,540.0	91.70	180.40	6,925.3	-3,384.1	-31.3	3,384.3	0.83	0.76	-0.33
10,631.0	90.20	181.10	6,923.8	-3,475.1	-32.5	3,475.3	1.82	-1.65	0.77
10,723.0	90.30	180.90	6,923.4	-3,567.1	-34.1	3,567.3	0.24	0.11	-0.22
10,815.0	90.00	181.10	6,923.2	-3,659.1	-35.7	3,659.3	0.39	-0.33	0.22
10,906.0	90.00	181.10	6,923.2	-3,750.1	-37.4	3,750.3	0.00	0.00	0.00
10,998.0	90.10	180.70	6,923.1	-3,842.1	-38.9	3,842.2	0.45	0.11	-0.43
11,121.0	90.20	180.70	6,922.8	-3,965.0	-40.4	3,965.2	0.08	0.08	0.00
11,212.0	89.80	180.60	6,922.8	-4,056.0	-41.4	4,056.2	0.45	-0.44	-0.11
11,303.0	89.30	180.70	6,923.5	-4,147.0	-42.4	4,147.2	0.56	-0.55	0.11
11,395.0	90.40	183.20	6,923.7	-4,239.0	-45.6	4,239.2	2.97	1.20	2.72
11,486.0	90.60	182.30	6,923.0	-4,329.9	-49.9	4,330.1	1.01	0.22	-0.99
11,577.0	90.60	180.90	6,922.0	-4,420.8	-52.5	4,421.1	1.54	0.00	-1.54
11,669.0	92.20	180.90	6,919.7	-4,512.8	-53.9	4,513.1	1.74	1.74	0.00
11,761.0	91.90	181.10	6,916.5	-4,604.7	-55.5	4,605.0	0.39	-0.33	0.22
11,852.0	91.90	180.00	6,913.4	-4,695.6	-56.4	4,696.0	1.21	0.00	-1.21
11,944.0	91.10	179.30	6,911.0	-4,787.6	-55.8	4,787.9	1.16	-0.87	-0.76
12,035.0	88.40	178.60	6,911.4	-4,878.6	-54.2	4,878.9	3.07	-2.97	-0.77
12,126.0	87.40	179.90	6,914.8	-4,969.5	-53.0	4,969.8	1.80	-1.10	1.43
12,218.0	87.70	180.70	6,918.7	-5,061.4	-53.5	5,061.7	0.93	0.33	0.87
12,311.0	89.70	180.70	6,920.8	-5,154.4	-54.6	5,154.7	2.15	2.15	0.00
12,402.0	90.40	181.30	6,920.7	-5,245.4	-56.2	5,245.7	1.01	0.77	0.66
12,493.0	90.60	181.10	6,919.9	-5,336.4	-58.1	5,336.7	0.31	0.22	-0.22
12,584.0	90.50	181.40	6,919.1	-5,427.3	-60.1	5,427.7	0.35	-0.11	0.33
12,676.0	89.40	179.80	6,919.1	-5,519.3	-61.0	5,519.7	2.11	-1.20	-1.74
12,768.0	90.90	181.30	6,918.9	-5,611.3	-61.9	5,611.7	2.31	1.63	1.63
12,859.0	90.70	182.00	6,917.6	-5,702.3	-64.5	5,702.6	0.80	-0.22	0.77
12,951.0	91.10	181.80	6,916.2	-5,794.2	-67.6	5,794.6	0.49	0.43	-0.22
13,042.0	92.10	182.30	6,913.6	-5,885.1	-70.8	5,885.5	1.23	1.10	0.55
13,136.0	92.20	181.80	6,910.1	-5,979.0	-74.2	5,979.4	0.54	0.11	-0.53
13,230.0	92.10	182.50	6,906.6	-6,072.8	-77.7	6,073.3	0.75	-0.11	0.74
13,324.0	90.80	181.30	6,904.2	-6,166.8	-80.8	6,167.3	1.88	-1.38	-1.28
13,418.0	91.30	180.90	6,902.5	-6,260.7	-82.6	6,261.3	0.68	0.53	-0.43
13,512.0	91.10	179.20	6,900.5	-6,354.7	-82.7	6,355.2	1.82	-0.21	-1.81
13,606.0	90.80	179.20	6,899.0	-6,448.7	-81.4	6,449.2	0.32	-0.32	0.00
13,701.0	90.70	179.20	6,897.7	-6,543.7	-80.1	6,544.1	0.11	-0.11	0.00
13,795.0	90.90	179.00	6,896.4	-6,637.6	-78.6	6,638.1	0.30	0.21	-0.21
13,889.0	89.20	178.50	6,896.3	-6,731.6	-76.6	6,732.0	1.89	-1.81	-0.53
13,983.0	90.10	179.30	6,896.9	-6,825.6	-74.8	6,826.0	1.28	0.96	0.85
14,077.0	91.40	179.70	6,895.7	-6,919.6	-73.9	6,920.0	1.45	1.38	0.43
14,170.0	91.40	181.10	6,893.4	-7,012.5	-74.6	7,012.9	1.50	0.00	1.51
14,264.0	91.40	181.10	6,891.1	-7,106.5	-76.4	7,106.9	0.00	0.00	0.00
14,358.0	91.80	180.20	6,888.5	-7,200.5	-77.5	7,200.9	1.05	0.43	-0.96
14,452.0	90.20	180.00	6,886.8	-7,294.4	-77.6	7,294.9	1.72	-1.70	-0.21
14,546.0	90.40	181.40	6,886.3	-7,388.4	-78.8	7,388.8	1.50	0.21	1.49
14,640.0	90.60	181.40	6,885.5	-7,482.4	-81.1	7,482.8	0.21	0.21	0.00
14,734.0	90.50	181.60	6,884.6	-7,576.4	-83.5	7,576.8	0.24	-0.11	0.21
14,828.0	90.10	181.60	6,884.1	-7,670.3	-86.2	7,670.8	0.43	-0.43	0.00
14,922.0	89.80	181.40	6,884.2	-7,764.3	-88.6	7,764.8	0.38	-0.32	-0.21

Company:	Bayswater Exploration & Production, LLC	Local Co-ordinate Reference:	Well Sherley D-4-9HN
Project:	SEC.4-T5N-R65W	TVD Reference:	WELL @ 4666.2ft (RKB - 25')
Site:	Sherley Pad Sec.4-T5N-R65W	MD Reference:	WELL @ 4666.2ft (RKB - 25')
Well:	Sherley D-4-9HN	North Reference:	True
Wellbore:	Wellbore #1	Survey Calculation Method:	Minimum Curvature
Design:	Wellbore #1	Database:	Landmark

Survey

Measured Depth (ft)	Inclination (°)	Azimuth (°)	Vertical Depth (ft)	+N/-S (ft)	+E/-W (ft)	Vertical Section (ft)	Dogleg Rate (°/100ft)	Build Rate (°/100ft)	Turn Rate (°/100ft)
15,016.0	89.50	180.70	6,884.8	-7,858.3	-90.3	7,858.8	0.81	-0.32	-0.74
15,110.0	90.50	180.60	6,884.8	-7,952.3	-91.4	7,952.8	1.07	1.06	-0.11
15,205.0	90.70	180.20	6,883.8	-8,047.3	-92.1	8,047.8	0.47	0.21	-0.42
15,299.0	90.40	179.50	6,882.9	-8,141.3	-91.8	8,141.8	0.81	-0.32	-0.74
15,351.7	90.23	179.78	6,882.6	-8,194.0	-91.5	8,194.5	0.62	-0.32	0.53
WP #1 (D-4-9HN)									
15,393.0	90.10	180.00	6,882.5	-8,235.3	-91.4	8,235.8	0.62	-0.32	0.53
15,488.0	89.90	179.30	6,882.5	-8,330.2	-90.8	8,330.7	0.77	-0.21	-0.74
15,581.0	91.00	179.30	6,881.7	-8,423.2	-89.7	8,423.7	1.18	1.18	0.00
15,675.0	90.80	179.20	6,880.3	-8,517.2	-88.5	8,517.7	0.24	-0.21	-0.11
15,769.0	90.20	179.50	6,879.4	-8,611.2	-87.4	8,611.6	0.71	-0.64	0.32
15,863.0	90.20	179.00	6,879.1	-8,705.2	-86.2	8,705.6	0.53	0.00	-0.53
15,958.0	90.10	177.20	6,878.9	-8,800.1	-83.0	8,800.5	1.90	-0.11	-1.89
16,052.0	89.70	179.20	6,879.0	-8,894.1	-80.1	8,894.4	2.17	-0.43	2.13
16,147.0	90.10	180.60	6,879.2	-8,989.1	-79.9	8,989.4	1.53	0.42	1.47
16,241.0	91.40	181.60	6,878.0	-9,083.1	-81.7	9,083.4	1.74	1.38	1.06
16,335.0	91.70	181.80	6,875.4	-9,177.0	-84.5	9,177.4	0.38	0.32	0.21
16,430.0	92.20	180.70	6,872.2	-9,271.9	-86.6	9,272.3	1.27	0.53	-1.16
16,509.0	92.10	180.60	6,869.2	-9,350.8	-87.5	9,351.2	0.18	-0.13	-0.13
16,566.0	92.10	180.60	6,867.1	-9,407.8	-88.1	9,408.2	0.00	0.00	0.00
BHL 770'FSL, 680'FWL, SEC.9									

Design Targets

Target Name	Dip Angle (°)	Dip Dir. (°)	TVD (ft)	+N/-S (ft)	+E/-W (ft)	Northing (ft)	Easting (ft)	Latitude	Longitude
- hit/miss target									
- Shape									
SHL 501'FNL, 715'FW	0.00	0.00	1.0	0.0	0.0	1,402,163.08	3,229,608.52	40.434408	-104.675153
- survey hits target center									
- Point									
BHL 770'FSL, 680'FW	0.00	0.00	6,870.0	-9,410.8	-104.0	1,392,752.08	3,229,592.07	40.408576	-104.675526
- survey misses target center by 16.5ft at 16566.0ft MD (6867.1 TVD, -9407.8 N, -88.1 E)									
- Point									

Checked By: _____ Approved By: _____ Date: _____