

Bayswater Exploration & Production, LLC

Well Name: **Sherley C-4-9HN**

Surface Location: Sherley Pad Sec.4-T5N-R65W

North American Datum 1983 , US State Plane 1983 , Colorado Northern Zone

Ground Elevation: 4641.4

+N/-S +E/-W Northing Easting Latitude Longitude Slot

0.0 0.0 1402178.38 3229610.05 40.434450 -104.675147

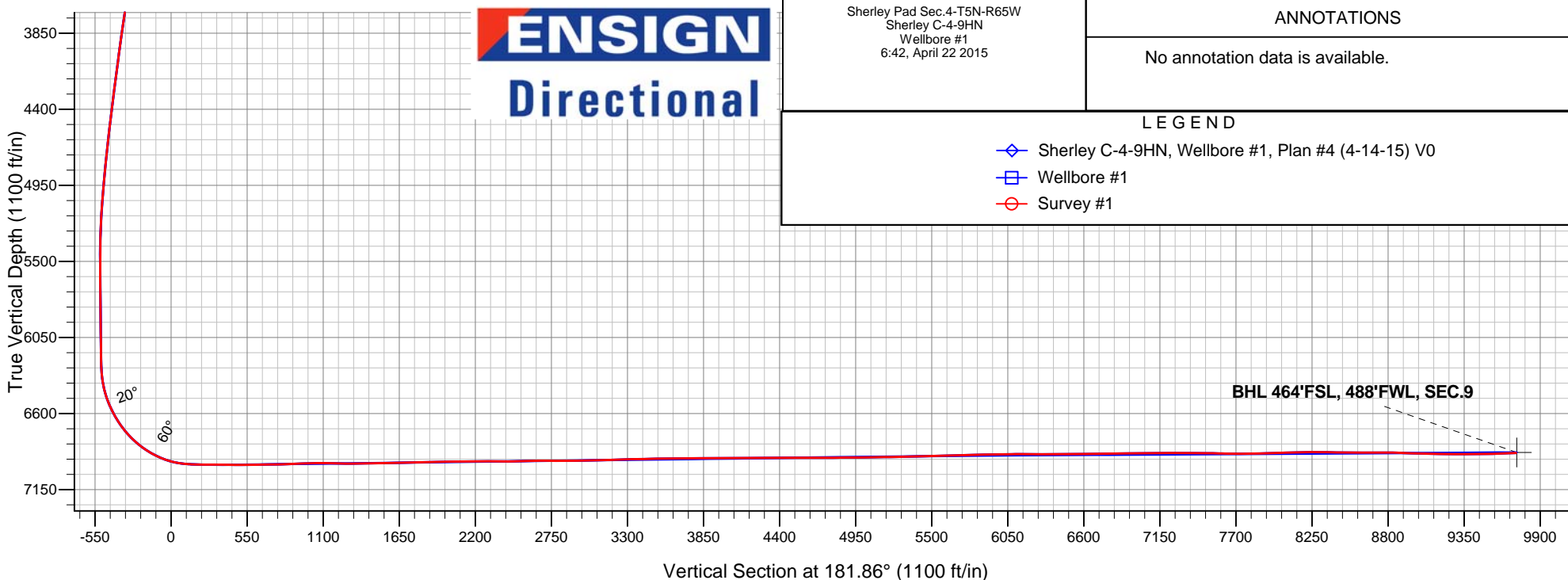
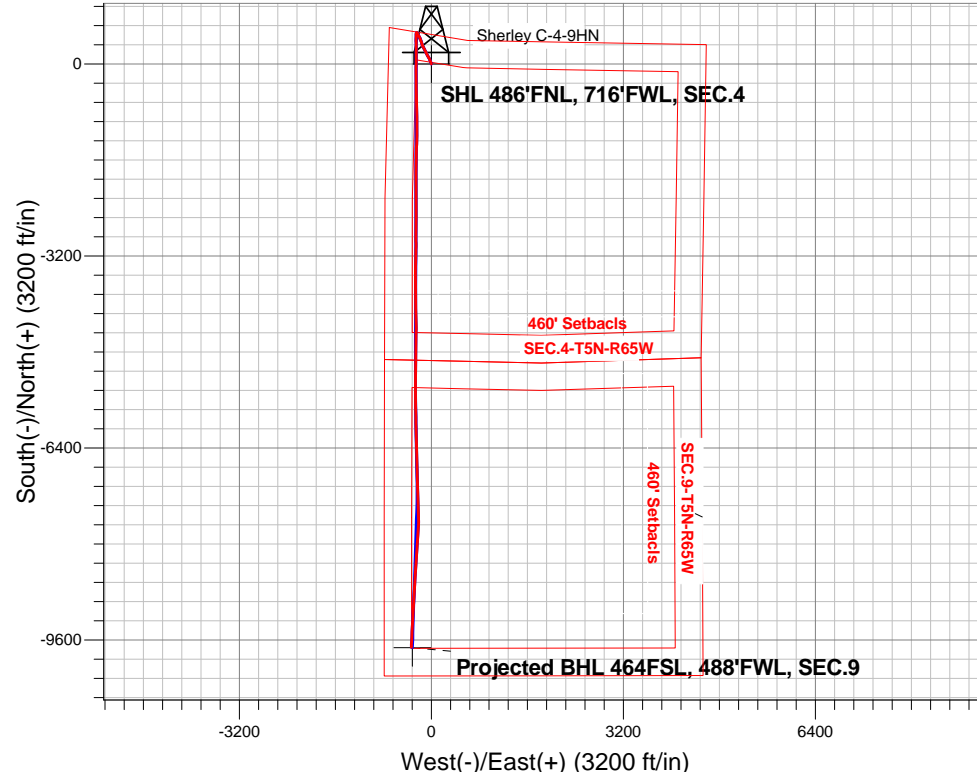
RKB - 25' WELL @ 4666.4ft (RKB - 25')

FINAL SURVEY

Projected Bottom Hole Location

16945'MD 6885'TVD 9721'S & 334'W of SHL

92.5 degree Incl @ 182.5 degree AZM





Bayswater Exploration & Production, LLC

SEC.4-T5N-R65W

Sherley Pad Sec.4-T5N-R65W

Sherley C-4-9HN

Wellbore #1

Survey: Survey #1

Standard Survey Report

22 April, 2015



BAYSWATER
EXPLORATION & PRODUCTION, LLC

Company:	Bayswater Exploration & Production, LLC	Local Co-ordinate Reference:	Well Sherley C-4-9HN
Project:	SEC.4-T5N-R65W	TVD Reference:	WELL @ 4666.4ft (RKB - 25')
Site:	Sherley Pad Sec.4-T5N-R65W	MD Reference:	WELL @ 4666.4ft (RKB - 25')
Well:	Sherley C-4-9HN	North Reference:	True
Wellbore:	Wellbore #1	Survey Calculation Method:	Minimum Curvature
Design:	Wellbore #1	Database:	Landmark

Project	SEC.4-T5N-R65W, Weld County, Colorado		
Map System:	US State Plane 1983	System Datum:	Mean Sea Level
Geo Datum:	North American Datum 1983		Using Well Reference Point
Map Zone:	Colorado Northern Zone		Using geodetic scale factor

Site	Sherley Pad Sec.4-T5N-R65W				
Site Position:		Northing:	1,402,207.92ft	Latitude:	40.434531
From:	Lat/Long	Easting:	3,229,612.00ft	Longitude:	-104.675139
Position Uncertainty:	0.0 ft	Slot Radius:	"	Grid Convergence:	0.53 °

Well	Sherley C-4-9HN					
Well Position	+N/-S	0.0 ft	Northing:	1,402,178.38 ft	Latitude:	40.434450
	+E/-W	0.0 ft	Easting:	3,229,610.05 ft	Longitude:	-104.675147
Position Uncertainty		0.0 ft	Wellhead Elevation:	ft	Ground Level:	4,641.4 ft

Wellbore	Wellbore #1				
Magnetics	Model Name	Sample Date	Declination (°)	Dip Angle (°)	Field Strength (nT)
	IGRF2010	4/10/2015	8.30	66.96	52,758

Design	Wellbore #1				
Audit Notes:					
Version:	1.0	Phase:	ACTUAL	Tie On Depth:	0.0
Vertical Section:	Depth From (TVD) (ft)	+N/-S (ft)	+E/-W (ft)	Direction (°)	
	0.0	0.0	0.0	181.86	

Survey Program	Date	4/22/2015			
From (ft)	To (ft)	Survey (Wellbore)	Tool Name	Description	
160.0	16,945.0	Survey #1 (Wellbore #1)	MWD	MWD - Standard	

Survey										
Measured Depth (ft)	Inclination (°)	Azimuth (°)	Vertical Depth (ft)	+N/-S (ft)	+E/-W (ft)	Vertical Section (ft)	Dogleg Rate (°/100ft)	Build Rate (°/100ft)	Turn Rate (°/100ft)	
0.0	0.00	0.00	0.0	0.0	0.0	0.0	0.00	0.00	0.00	
1.0	0.00	158.10	1.0	0.0	0.0	0.0	0.25	0.25	0.00	
SHL 486'FNL, 716'FWL, SEC.4										
160.0	0.40	158.10	160.0	-0.5	0.2	0.5	0.25	0.25	0.00	
251.0	0.20	94.60	251.0	-0.8	0.5	0.8	0.39	-0.22	-69.78	
343.0	0.10	302.10	343.0	-0.8	0.6	0.8	0.32	-0.11	-165.76	
434.0	1.20	3.90	434.0	0.2	0.6	-0.2	1.27	1.21	67.91	
526.0	2.50	358.70	525.9	3.2	0.6	-3.2	1.42	1.41	-5.65	
618.0	3.20	337.60	617.8	7.5	-0.4	-7.5	1.36	0.76	-22.93	
709.0	4.40	335.10	708.6	13.1	-2.9	-13.0	1.33	1.32	-2.75	
785.0	4.90	337.40	784.4	18.7	-5.3	-18.5	0.70	0.66	3.03	
916.0	4.80	337.50	914.9	28.9	-9.6	-28.6	0.08	-0.08	0.08	
1,011.0	7.60	342.30	1,009.3	38.6	-13.0	-38.1	2.99	2.95	5.05	

Company:	Bayswater Exploration & Production, LLC	Local Co-ordinate Reference:	Well Sherley C-4-9HN
Project:	SEC.4-T5N-R65W	TVD Reference:	WELL @ 4666.4ft (RKB - 25')
Site:	Sherley Pad Sec.4-T5N-R65W	MD Reference:	WELL @ 4666.4ft (RKB - 25')
Well:	Sherley C-4-9HN	North Reference:	True
Wellbore:	Wellbore #1	Survey Calculation Method:	Minimum Curvature
Design:	Wellbore #1	Database:	Landmark

Survey

Measured Depth (ft)	Inclination (°)	Azimuth (°)	Vertical Depth (ft)	+N/-S (ft)	+E/-W (ft)	Vertical Section (ft)	Dogleg Rate (°/100ft)	Build Rate (°/100ft)	Turn Rate (°/100ft)
1,105.0	7.70	339.30	1,102.5	50.4	-17.1	-49.8	0.44	0.11	-3.19
1,197.0	7.30	337.00	1,193.7	61.5	-21.6	-60.8	0.54	-0.43	-2.50
1,288.0	7.30	336.50	1,284.0	72.2	-26.2	-71.3	0.07	0.00	-0.55
1,380.0	7.30	338.20	1,375.2	83.0	-30.7	-81.9	0.23	0.00	1.85
1,472.0	6.90	332.40	1,466.5	93.3	-35.4	-92.1	0.89	-0.43	-6.30
1,564.0	6.20	326.60	1,557.9	102.3	-40.7	-101.0	1.05	-0.76	-6.30
1,654.0	7.30	325.10	1,647.3	111.1	-46.6	-109.5	1.24	1.22	-1.67
1,746.0	7.50	335.10	1,738.5	121.3	-52.5	-119.5	1.41	0.22	10.87
1,838.0	6.90	327.70	1,829.8	131.4	-58.0	-129.5	1.20	-0.65	-8.04
1,929.0	7.50	336.50	1,920.1	141.5	-63.3	-139.4	1.38	0.66	9.67
2,021.0	7.30	329.60	2,011.3	152.0	-68.6	-149.7	0.99	-0.22	-7.50
2,113.0	7.80	336.10	2,102.5	162.8	-74.1	-160.3	1.07	0.54	7.07
2,204.0	7.30	334.90	2,192.8	173.7	-79.1	-171.0	0.58	-0.55	-1.32
2,296.0	7.20	332.80	2,284.0	184.1	-84.2	-181.3	0.31	-0.11	-2.28
2,389.0	7.10	330.70	2,376.3	194.3	-89.7	-191.3	0.30	-0.11	-2.26
2,483.0	6.40	326.80	2,469.6	203.7	-95.4	-200.5	0.89	-0.74	-4.15
2,576.0	7.20	335.40	2,562.0	213.4	-100.6	-210.0	1.39	0.86	9.25
2,670.0	7.20	332.30	2,655.3	224.0	-105.8	-220.4	0.41	0.00	-3.30
2,764.0	7.80	337.90	2,748.4	235.1	-111.0	-231.4	1.01	0.64	5.96
2,857.0	7.00	334.60	2,840.7	246.0	-115.8	-242.2	0.97	-0.86	-3.55
2,951.0	6.40	332.40	2,934.0	255.9	-120.7	-251.8	0.69	-0.64	-2.34
3,045.0	7.10	333.80	3,027.4	265.7	-125.7	-261.5	0.76	0.74	1.49
3,136.0	6.20	330.30	3,117.8	275.0	-130.6	-270.6	1.08	-0.99	-3.85
3,231.0	6.70	333.70	3,212.2	284.5	-135.6	-279.9	0.66	0.53	3.58
3,324.0	6.90	326.10	3,304.5	294.0	-141.1	-289.2	0.99	0.22	-8.17
3,417.0	6.50	338.60	3,396.9	303.5	-146.1	-298.6	1.62	-0.43	13.44
3,512.0	6.50	340.40	3,491.3	313.6	-149.9	-308.5	0.21	0.00	1.89
3,605.0	7.80	346.00	3,583.5	324.6	-153.2	-319.5	1.58	1.40	6.02
3,698.0	8.20	345.80	3,675.6	337.2	-156.3	-332.0	0.43	0.43	-0.22
3,791.0	8.40	341.20	3,767.7	350.1	-160.2	-344.7	0.75	0.22	-4.95
3,886.0	8.70	341.80	3,861.6	363.5	-164.6	-357.9	0.33	0.32	0.63
3,980.0	8.50	340.20	3,954.6	376.7	-169.2	-371.1	0.33	-0.21	-1.70
4,074.0	7.40	340.40	4,047.7	389.0	-173.6	-383.1	1.17	-1.17	0.21
4,168.0	8.30	342.50	4,140.8	401.2	-177.7	-395.2	1.00	0.96	2.23
4,262.0	7.60	339.80	4,233.9	413.5	-181.8	-407.3	0.84	-0.74	-2.87
4,357.0	8.70	335.40	4,327.9	425.9	-187.0	-419.6	1.33	1.16	-4.63
4,452.0	8.40	333.10	4,421.9	438.6	-193.1	-432.1	0.48	-0.32	-2.42
4,545.0	7.70	332.40	4,513.9	450.2	-199.1	-443.5	0.76	-0.75	-0.75
4,639.0	6.30	330.50	4,607.2	460.3	-204.6	-453.4	1.51	-1.49	-2.02
4,732.0	7.60	329.10	4,699.5	470.0	-210.2	-462.9	1.41	1.40	-1.51
4,826.0	6.50	326.30	4,792.8	479.7	-216.4	-472.5	1.23	-1.17	-2.98
4,920.0	6.70	327.00	4,886.2	488.8	-222.3	-481.3	0.23	0.21	0.74
5,014.0	6.40	326.80	4,979.6	497.8	-228.2	-490.1	0.32	-0.32	-0.21
5,107.0	5.30	324.90	5,072.1	505.6	-233.5	-497.8	1.20	-1.18	-2.04
5,202.0	4.20	321.20	5,166.8	511.9	-238.2	-503.9	1.20	-1.16	-3.89
5,296.0	3.20	321.50	5,260.6	516.6	-242.0	-508.5	1.06	-1.06	0.32
5,389.0	2.20	323.10	5,353.5	520.1	-244.7	-511.9	1.08	-1.08	1.72
5,484.0	0.20	159.30	5,448.5	521.4	-245.7	-513.2	2.52	-2.11	-172.42
5,578.0	0.70	202.00	5,542.5	520.7	-245.8	-512.5	0.61	0.53	45.43
5,672.0	0.70	232.40	5,636.5	519.8	-246.5	-511.6	0.39	0.00	32.34
5,766.0	0.70	217.70	5,730.4	519.0	-247.3	-510.7	0.19	0.00	-15.64
5,860.0	0.80	231.20	5,824.4	518.2	-248.2	-509.8	0.22	0.11	14.36
5,953.0	0.50	162.80	5,917.4	517.4	-248.6	-509.0	0.83	-0.32	-73.55
6,048.0	0.70	175.80	6,012.4	516.4	-248.4	-508.1	0.25	0.21	13.68

Company:	Bayswater Exploration & Production, LLC	Local Co-ordinate Reference:	Well Sherley C-4-9HN
Project:	SEC.4-T5N-R65W	TVD Reference:	WELL @ 4666.4ft (RKB - 25')
Site:	Sherley Pad Sec.4-T5N-R65W	MD Reference:	WELL @ 4666.4ft (RKB - 25')
Well:	Sherley C-4-9HN	North Reference:	True
Wellbore:	Wellbore #1	Survey Calculation Method:	Minimum Curvature
Design:	Wellbore #1	Database:	Landmark

Survey

Measured Depth (ft)	Inclination (°)	Azimuth (°)	Vertical Depth (ft)	+N/-S (ft)	+E/-W (ft)	Vertical Section (ft)	Dogleg Rate (°/100ft)	Build Rate (°/100ft)	Turn Rate (°/100ft)
6,141.0	0.80	207.10	6,105.4	515.3	-248.7	-506.9	0.45	0.11	33.66
6,235.0	0.80	210.30	6,199.4	514.1	-249.3	-505.7	0.05	0.00	3.40
6,282.0	1.00	192.30	6,246.4	513.4	-249.5	-505.0	0.73	0.43	-38.30
6,329.0	3.80	189.00	6,293.4	511.5	-249.9	-503.1	5.96	5.96	-7.02
6,376.0	7.00	190.20	6,340.1	507.1	-250.6	-498.7	6.81	6.81	2.55
6,423.0	11.00	187.10	6,386.6	499.8	-251.7	-491.4	8.57	8.51	-6.60
6,470.0	13.80	184.80	6,432.5	489.8	-252.7	-481.3	6.05	5.96	-4.89
6,516.0	17.40	180.40	6,476.8	477.5	-253.2	-469.0	8.23	7.83	-9.57
6,563.0	21.90	180.70	6,521.0	461.7	-253.4	-453.2	9.58	9.57	0.64
6,609.0	26.10	181.80	6,563.0	443.0	-253.8	-434.5	9.18	9.13	2.39
6,656.0	28.40	180.90	6,604.8	421.4	-254.3	-413.0	4.97	4.89	-1.91
6,703.0	30.90	179.50	6,645.6	398.2	-254.4	-389.7	5.52	5.32	-2.98
6,750.0	35.40	178.10	6,685.0	372.5	-253.8	-364.1	9.71	9.57	-2.98
6,797.0	39.00	177.90	6,722.4	344.1	-252.8	-335.7	7.66	7.66	-0.43
6,844.0	43.10	178.30	6,757.9	313.3	-251.8	-304.9	8.74	8.72	0.85
6,891.0	46.70	179.90	6,791.1	280.1	-251.3	-271.8	8.03	7.66	3.40
6,938.0	50.30	179.90	6,822.3	244.9	-251.2	-236.6	7.66	7.66	0.00
6,984.0	54.20	180.70	6,850.4	208.6	-251.4	-200.3	8.59	8.48	1.74
7,031.0	59.40	179.50	6,876.2	169.2	-251.5	-161.0	11.27	11.06	-2.55
7,078.0	63.40	180.00	6,898.7	128.0	-251.3	-119.8	8.56	8.51	1.06
7,125.0	65.40	180.60	6,919.0	85.6	-251.5	-77.4	4.41	4.26	1.28
7,173.0	70.70	180.20	6,936.9	41.1	-251.8	-32.9	11.07	11.04	-0.83
7,220.0	76.40	181.60	6,950.2	-4.0	-252.6	12.1	12.46	12.13	2.98
7,266.0	81.60	182.30	6,959.0	-49.1	-254.1	57.3	11.40	11.30	1.52
7,313.0	85.10	181.80	6,964.4	-95.7	-255.8	104.0	7.52	7.45	-1.06
7,355.0	87.70	179.30	6,967.1	-137.6	-256.2	145.9	8.58	6.19	-5.95
7,437.0	89.30	179.70	6,969.2	-219.6	-255.4	227.8	2.01	1.95	0.49
7,531.0	89.50	179.20	6,970.2	-313.6	-254.5	321.7	0.57	0.21	-0.53
7,625.0	89.30	177.40	6,971.2	-407.5	-251.8	415.5	1.93	-0.21	-1.91
7,719.0	90.30	178.60	6,971.5	-501.5	-248.5	509.3	1.66	1.06	1.28
7,813.0	90.90	179.50	6,970.5	-595.4	-246.9	603.1	1.15	0.64	0.96
7,907.0	90.90	179.00	6,969.0	-689.4	-245.7	697.0	0.53	0.00	-0.53
8,001.0	91.50	180.00	6,967.1	-783.4	-244.9	790.9	1.24	0.64	1.06
8,095.0	92.30	178.60	6,964.0	-877.3	-243.7	884.8	1.71	0.85	-1.49
8,189.0	92.00	179.00	6,960.4	-971.3	-241.8	978.6	0.53	-0.32	0.43
8,283.0	90.00	179.50	6,958.8	-1,065.2	-240.5	1,072.5	2.19	-2.13	0.53
8,378.0	88.70	180.70	6,959.9	-1,160.2	-240.7	1,167.4	1.86	-1.37	1.26
8,472.0	89.30	182.30	6,961.5	-1,254.2	-243.2	1,261.4	1.82	0.64	1.70
8,566.0	90.60	182.30	6,961.6	-1,348.1	-246.9	1,355.4	1.38	1.38	0.00
8,660.0	90.80	181.30	6,960.4	-1,442.0	-249.9	1,449.4	1.08	0.21	-1.06
8,754.0	91.10	179.70	6,958.9	-1,536.0	-250.7	1,543.3	1.73	0.32	-1.70
8,848.0	91.20	181.30	6,957.0	-1,630.0	-251.5	1,637.3	1.71	0.11	1.70
8,942.0	91.50	180.40	6,954.8	-1,723.9	-252.9	1,731.2	1.01	0.32	-0.96
9,036.0	92.00	180.60	6,951.9	-1,817.9	-253.7	1,825.2	0.57	0.53	0.21
9,131.0	91.10	181.60	6,949.3	-1,912.8	-255.6	1,920.1	1.42	-0.95	1.05
9,225.0	91.30	180.20	6,947.4	-2,006.8	-257.0	2,014.1	1.50	0.21	-1.49
9,319.0	89.90	180.20	6,946.4	-2,100.8	-257.4	2,108.0	1.49	-1.49	0.00
9,412.0	89.70	177.90	6,946.7	-2,193.8	-255.8	2,200.9	2.48	-0.22	-2.47
9,507.0	90.40	179.30	6,946.6	-2,288.8	-253.5	2,295.8	1.65	0.74	1.47
9,601.0	89.90	179.70	6,946.4	-2,382.7	-252.7	2,389.7	0.68	-0.53	0.43
9,696.0	91.20	180.20	6,945.5	-2,477.7	-252.6	2,484.6	1.47	1.37	0.53
9,790.0	91.00	181.40	6,943.7	-2,571.7	-253.9	2,578.6	1.29	-0.21	1.28
9,884.0	91.70	181.10	6,941.5	-2,665.7	-256.0	2,672.6	0.81	0.74	-0.32
9,978.0	89.40	180.60	6,940.5	-2,759.6	-257.3	2,766.5	2.50	-2.45	-0.53

Company:	Bayswater Exploration & Production, LLC	Local Co-ordinate Reference:	Well Sherley C-4-9HN
Project:	SEC.4-T5N-R65W	TVD Reference:	WELL @ 4666.4ft (RKB - 25')
Site:	Sherley Pad Sec.4-T5N-R65W	MD Reference:	WELL @ 4666.4ft (RKB - 25')
Well:	Sherley C-4-9HN	North Reference:	True
Wellbore:	Wellbore #1	Survey Calculation Method:	Minimum Curvature
Design:	Wellbore #1	Database:	Landmark

Survey

Measured Depth (ft)	Inclination (°)	Azimuth (°)	Vertical Depth (ft)	+N/-S (ft)	+E/-W (ft)	Vertical Section (ft)	Dogleg Rate (°/100ft)	Build Rate (°/100ft)	Turn Rate (°/100ft)
10,073.0	89.70	180.40	6,941.3	-2,854.6	-258.2	2,861.5	0.38	0.32	-0.21
10,167.0	90.30	178.60	6,941.3	-2,948.6	-257.4	2,955.4	2.02	0.64	-1.91
10,262.0	91.50	180.90	6,939.8	-3,043.6	-256.9	3,050.3	2.73	1.26	2.42
10,356.0	92.70	179.70	6,936.4	-3,137.5	-257.4	3,144.2	1.80	1.28	-1.28
10,448.0	91.50	181.60	6,933.0	-3,229.5	-258.5	3,236.2	2.44	-1.30	2.07
10,540.0	91.60	180.70	6,930.5	-3,321.4	-260.3	3,328.1	0.98	0.11	-0.98
10,631.0	90.90	182.00	6,928.5	-3,412.4	-262.5	3,419.1	1.62	-0.77	1.43
10,723.0	90.60	180.90	6,927.3	-3,504.3	-264.8	3,511.1	1.24	-0.33	-1.20
10,814.0	90.40	180.70	6,926.5	-3,595.3	-266.1	3,602.1	0.31	-0.22	-0.22
10,906.0	90.60	179.50	6,925.7	-3,687.3	-266.2	3,694.0	1.32	0.22	-1.30
10,997.0	90.70	178.80	6,924.7	-3,778.3	-264.9	3,784.9	0.78	0.11	-0.77
11,089.0	90.40	179.50	6,923.8	-3,870.3	-263.5	3,876.8	0.83	-0.33	0.76
11,180.0	90.70	179.30	6,922.9	-3,961.3	-262.6	3,967.7	0.40	0.33	-0.22
11,271.0	91.20	178.50	6,921.4	-4,052.2	-260.8	4,058.6	1.04	0.55	-0.88
11,363.0	90.30	177.20	6,920.2	-4,144.2	-257.4	4,150.3	1.72	-0.98	-1.41
11,455.0	89.40	178.80	6,920.5	-4,236.1	-254.1	4,242.1	2.00	-0.98	1.74
11,545.0	89.90	179.30	6,921.0	-4,326.1	-252.7	4,332.0	0.79	0.56	0.56
11,637.0	89.60	181.40	6,921.4	-4,418.1	-253.2	4,424.0	2.31	-0.33	2.28
11,729.0	89.90	179.90	6,921.8	-4,510.1	-254.3	4,515.9	1.66	0.33	-1.63
11,820.0	90.20	182.10	6,921.7	-4,601.0	-255.9	4,606.9	2.44	0.33	2.42
11,912.0	90.70	180.60	6,921.0	-4,693.0	-258.0	4,698.9	1.72	0.54	-1.63
12,003.0	90.90	181.80	6,919.7	-4,784.0	-259.9	4,789.9	1.34	0.22	1.32
12,094.0	90.90	180.40	6,918.3	-4,875.0	-261.7	4,880.9	1.54	0.00	-1.54
12,186.0	89.90	180.40	6,917.7	-4,967.0	-262.3	4,972.8	1.09	-1.09	0.00
12,279.0	90.80	180.90	6,917.1	-5,059.9	-263.4	5,065.8	1.11	0.97	0.54
12,370.0	91.50	180.20	6,915.3	-5,150.9	-264.2	5,156.8	1.09	0.77	-0.77
12,461.0	90.40	179.90	6,913.8	-5,241.9	-264.3	5,247.7	1.25	-1.21	-0.33
12,553.0	91.30	179.30	6,912.4	-5,333.9	-263.7	5,339.6	1.18	0.98	-0.65
12,644.0	91.30	180.60	6,910.3	-5,424.9	-263.6	5,430.6	1.43	0.00	1.43
12,736.0	92.20	179.30	6,907.5	-5,516.8	-263.5	5,522.5	1.72	0.98	-1.41
12,824.1	92.88	179.88	6,903.6	-5,604.9	-262.9	5,610.4	1.01	0.77	0.66
WP #1 (C-4-9H)									
12,827.0	92.90	179.90	6,903.5	-5,607.7	-262.9	5,613.3	1.01	0.77	0.66
12,919.0	90.40	179.30	6,900.8	-5,699.7	-262.2	5,705.2	2.79	-2.72	-0.65
13,010.0	91.00	179.00	6,899.7	-5,790.7	-260.9	5,796.1	0.74	0.66	-0.33
13,104.0	91.40	178.80	6,897.7	-5,884.6	-259.1	5,889.9	0.48	0.43	-0.21
13,198.0	90.30	179.50	6,896.3	-5,978.6	-257.7	5,983.8	1.39	-1.17	0.74
13,292.0	91.50	178.50	6,894.9	-6,072.6	-256.1	6,077.7	1.66	1.28	-1.06
13,386.0	89.50	177.90	6,894.0	-6,166.5	-253.1	6,171.5	2.22	-2.13	-0.64
13,481.0	90.20	177.90	6,894.3	-6,261.5	-249.6	6,266.3	0.74	0.74	0.00
13,575.0	89.90	179.30	6,894.2	-6,355.4	-247.3	6,360.1	1.52	-0.32	1.49
13,669.0	90.60	179.00	6,893.8	-6,449.4	-245.9	6,454.0	0.81	0.74	-0.32
13,763.0	89.80	178.80	6,893.5	-6,543.4	-244.1	6,547.9	0.88	-0.85	-0.21
13,857.0	90.50	179.20	6,893.2	-6,637.4	-242.5	6,641.7	0.86	0.74	0.43
13,951.0	91.20	177.20	6,891.8	-6,731.3	-239.5	6,735.5	2.25	0.74	-2.13
14,045.0	90.90	177.90	6,890.1	-6,825.2	-235.5	6,829.3	0.81	-0.32	0.74
14,138.0	90.70	178.60	6,888.8	-6,918.2	-232.7	6,922.1	0.78	-0.22	0.75
14,233.0	91.50	178.60	6,887.0	-7,013.1	-230.4	7,016.9	0.84	0.84	0.00
14,294.4	90.91	178.08	6,885.7	-7,074.5	-228.6	7,078.2	1.28	-0.96	-0.85
WP #2 (C-4-9H)									
14,327.0	90.60	177.80	6,885.3	-7,107.0	-227.4	7,110.7	1.28	-0.96	-0.85
14,421.0	89.90	178.30	6,884.9	-7,201.0	-224.2	7,204.5	0.92	-0.74	0.53
14,515.0	89.80	179.70	6,885.1	-7,295.0	-222.6	7,298.4	1.49	-0.11	1.49
14,608.0	89.20	177.20	6,885.9	-7,387.9	-220.0	7,391.2	2.76	-0.65	-2.69

Company:	Bayswater Exploration & Production, LLC	Local Co-ordinate Reference:	Well Sherley C-4-9HN
Project:	SEC.4-T5N-R65W	TVD Reference:	WELL @ 4666.4ft (RKB - 25')
Site:	Sherley Pad Sec.4-T5N-R65W	MD Reference:	WELL @ 4666.4ft (RKB - 25')
Well:	Sherley C-4-9HN	North Reference:	True
Wellbore:	Wellbore #1	Survey Calculation Method:	Minimum Curvature
Design:	Wellbore #1	Database:	Landmark

Survey										
Measured Depth (ft)	Inclination (°)	Azimuth (°)	Vertical Depth (ft)	+N/-S (ft)	+E/-W (ft)	Vertical Section (ft)	Dogleg Rate (°/100ft)	Build Rate (°/100ft)	Turn Rate (°/100ft)	
14,702.0	89.60	178.10	6,886.9	-7,481.8	-216.2	7,484.9	1.05	0.43	0.96	
14,796.0	87.80	178.10	6,889.0	-7,575.8	-213.1	7,578.7	1.91	-1.91	0.00	
14,891.0	89.60	182.70	6,891.2	-7,670.7	-213.7	7,673.6	5.20	1.89	4.84	
14,985.0	91.60	183.60	6,890.2	-7,764.6	-218.9	7,767.6	2.33	2.13	0.96	
15,079.0	90.90	183.40	6,888.2	-7,858.4	-224.6	7,861.5	0.77	-0.74	-0.21	
15,173.0	91.30	184.30	6,886.3	-7,952.1	-231.0	7,955.4	1.05	0.43	0.96	
15,267.0	91.50	183.40	6,884.1	-8,045.9	-237.3	8,049.3	0.98	0.21	-0.96	
15,361.0	91.40	183.70	6,881.7	-8,139.7	-243.1	8,143.3	0.34	-0.11	0.32	
15,456.0	90.50	185.00	6,880.1	-8,234.4	-250.3	8,238.2	1.66	-0.95	1.37	
15,549.0	90.00	185.00	6,879.7	-8,327.0	-258.4	8,331.0	0.54	-0.54	0.00	
15,643.0	88.10	184.30	6,881.3	-8,420.7	-266.0	8,424.9	2.15	-2.02	-0.74	
15,738.0	89.40	183.60	6,883.3	-8,515.5	-272.6	8,519.8	1.55	1.37	-0.74	
15,832.0	90.60	182.70	6,883.3	-8,609.3	-277.7	8,613.8	1.60	1.28	-0.96	
15,926.0	90.30	182.00	6,882.6	-8,703.2	-281.6	8,707.8	0.81	-0.32	-0.74	
16,020.0	89.70	181.80	6,882.6	-8,797.2	-284.7	8,801.8	0.67	-0.64	-0.21	
16,115.0	87.80	183.20	6,884.7	-8,892.1	-288.8	8,896.7	2.48	-2.00	1.47	
16,209.0	88.20	183.40	6,887.9	-8,985.8	-294.2	8,990.7	0.48	0.43	0.21	
16,303.0	88.50	183.00	6,890.6	-9,079.7	-299.5	9,084.6	0.53	0.32	-0.43	
16,398.0	89.20	183.70	6,892.6	-9,174.5	-305.0	9,179.5	1.04	0.74	0.74	
16,492.0	89.60	183.60	6,893.5	-9,268.3	-311.0	9,273.5	0.44	0.43	-0.11	
16,586.0	90.00	183.70	6,893.9	-9,362.1	-317.0	9,367.4	0.44	0.43	0.11	
16,680.0	90.70	183.20	6,893.3	-9,455.9	-322.7	9,461.4	0.92	0.74	-0.53	
16,775.0	91.50	182.30	6,891.5	-9,550.8	-327.2	9,556.4	1.27	0.84	-0.95	
16,869.0	92.30	181.80	6,888.4	-9,644.7	-330.6	9,650.3	1.00	0.85	-0.53	
16,888.0	92.50	182.50	6,887.6	-9,663.6	-331.3	9,669.3	3.83	1.05	3.68	
16,945.0	92.50	182.50	6,885.1	-9,720.5	-333.8	9,726.2	0.00	0.00	0.00	
BHL 470'FSL, 470'FWL, SEC.9										

Design Targets										
Target Name	Dip Angle (°)	Dip Dir. (°)	TVD (ft)	+N/-S (ft)	+E/-W (ft)	Northing (ft)	Easting (ft)	Latitude	Longitude	
SHL 486'FNL, 716'FW	0.00	0.00	1.0	0.0	0.0	1,402,178.39	3,229,610.05	40.434450	-104.675147	
- hit/miss target										
- Shape										
- survey hits target center										
- Point										
BHL 470'FSL, 470'FW	0.00	0.00	6,881.4	-9,726.1	-315.8	1,392,450.20	3,229,384.74	40.407753	-104.676281	
- survey misses target center by 19.2ft at 16945.0ft MD (6885.1 TVD, -9720.5 N, -333.8 E)										
- Point										

Checked By: _____	Approved By: _____	Date: _____
-------------------	--------------------	-------------