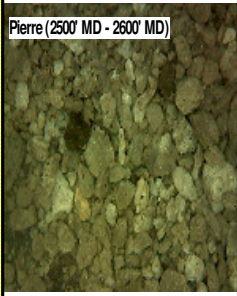
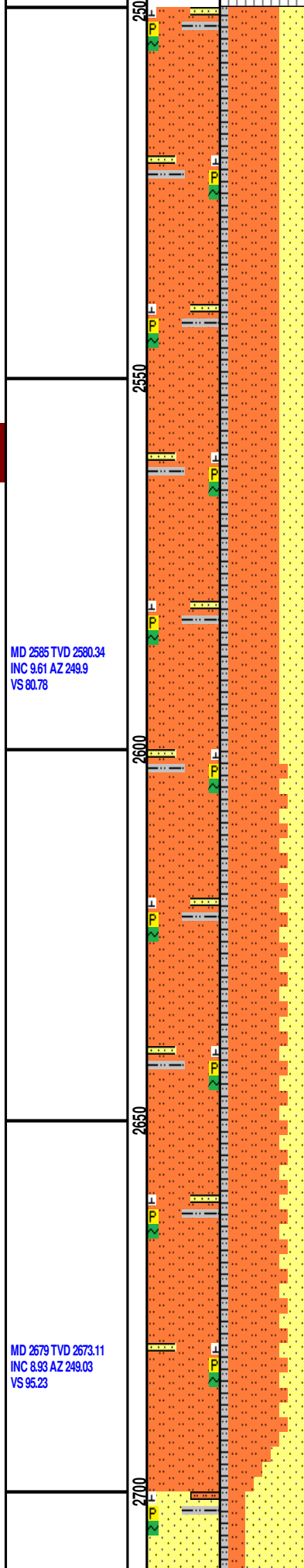
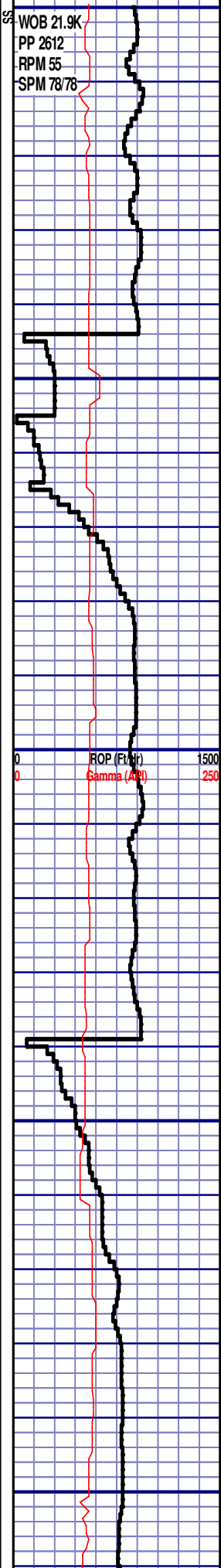


2500' MD @ 11.5° IN @ 2500' MD ON
03/10/15 W/BIT #2 8.75" SMITH
SDi519HPX S/N JJ7991 IN @ 932' MD

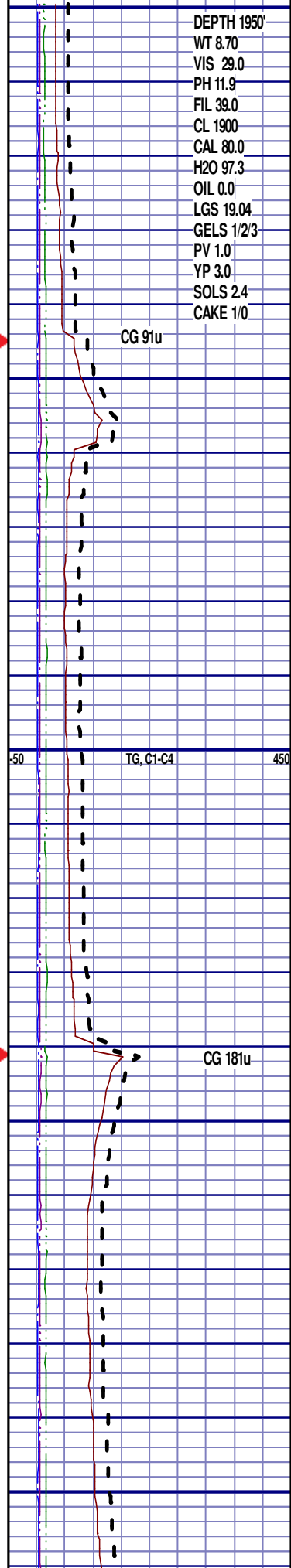


PIERRE

BEFORE LOGGING DEPTH

2500' MD-2600' MD: SLTST: 60% LTGY
- MEDLTGY, FRI, FN TO MED GRN,
W SRTD, CALC CMT, TRC PYR, TRC
IMBD GLAU, SANDY, FREE SLTYSH,
INTGR POR, NO STN, NO FLOR, NO
O FLOR, NO CUT, NO RNG

2600' MD-2700' MD: SLTST: 65% LTGY
- MEDLTGY, FRI, FN TO MED GRN,
W SRTD, CALC CMT, TRC PYR, TRC
IMBD GLAU, SANDY, FREE SLTYSH,
INTGR POR, NO STN, NO FLOR, NO
O FLOR, NO CUT, NO RNG

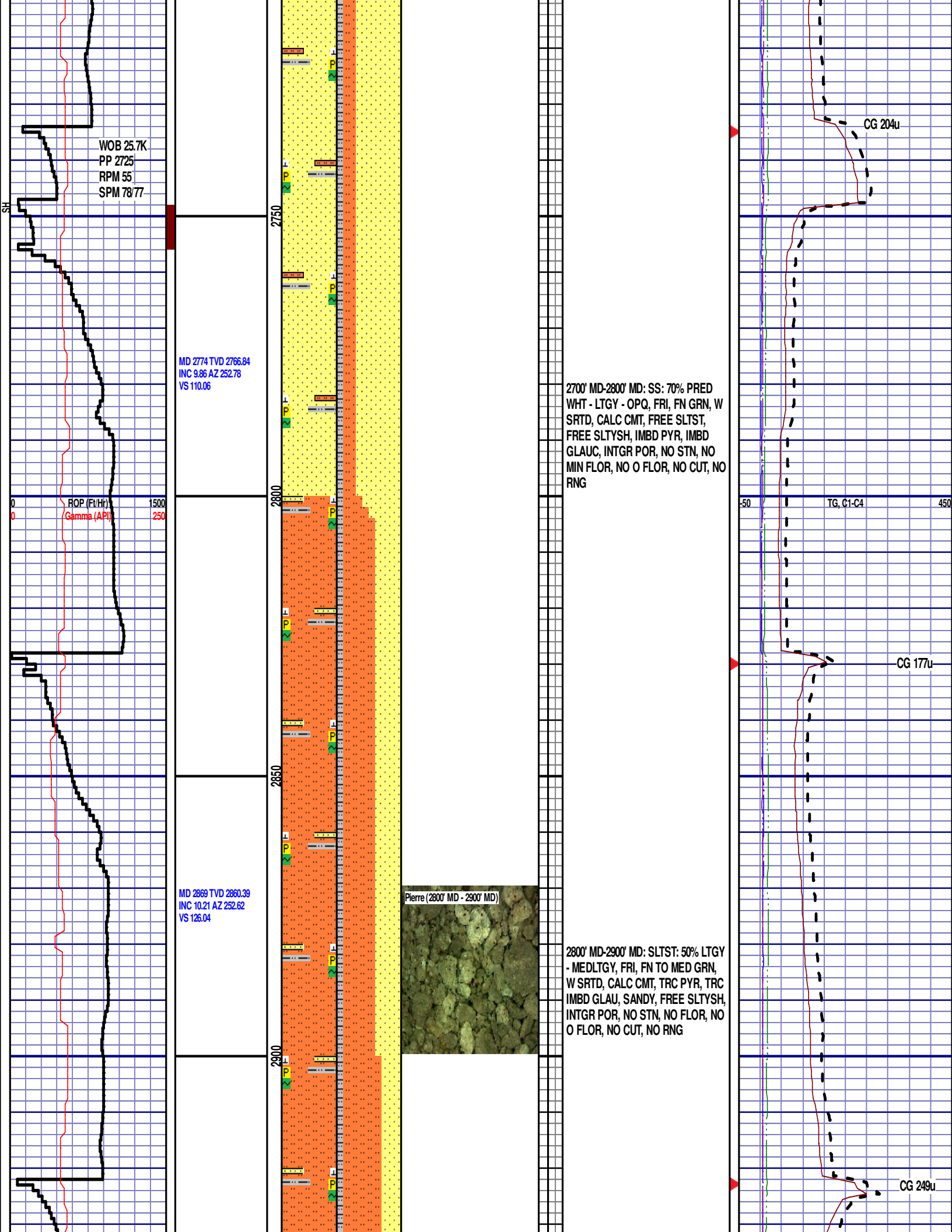


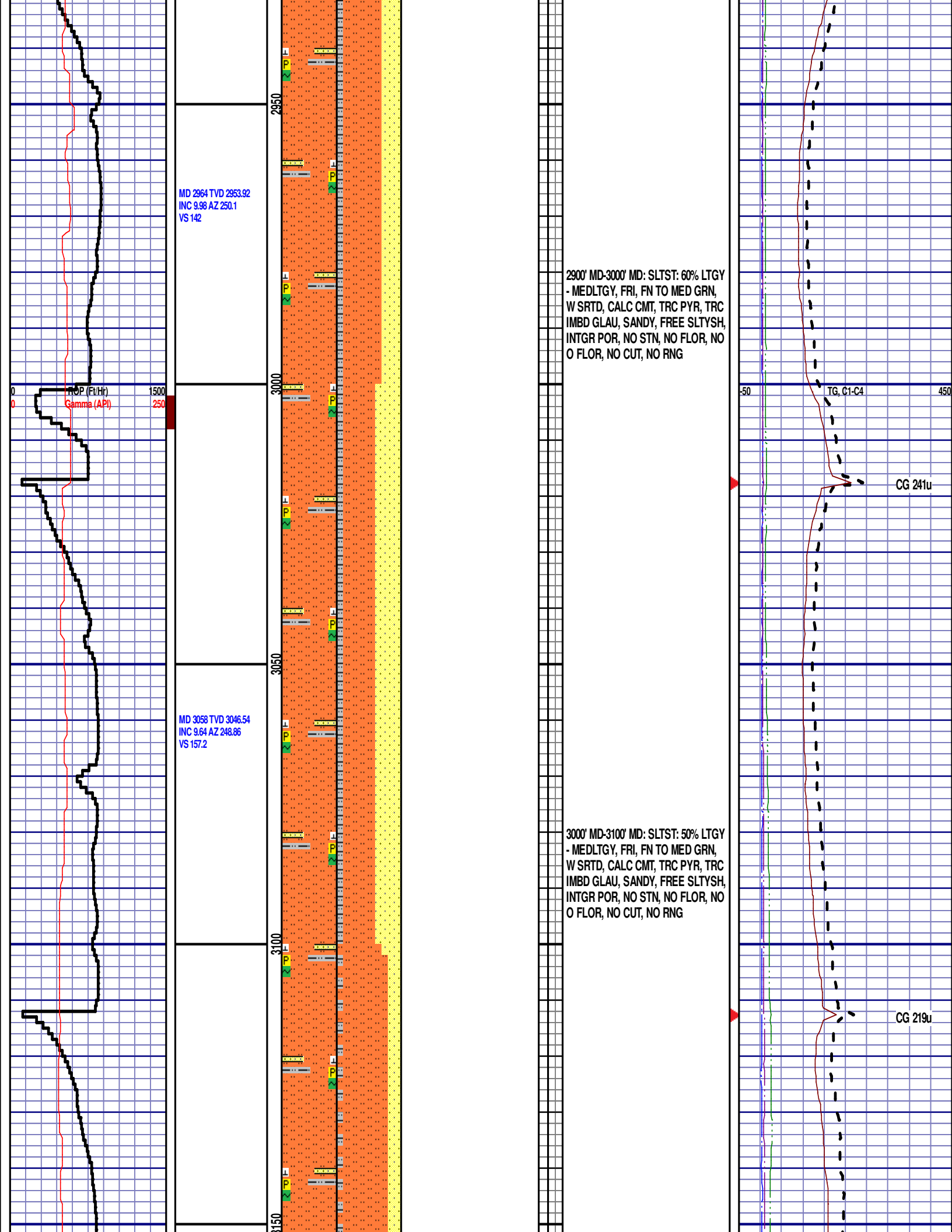
DEPTH 1950'
WT 8.70
VIS 29.0
PH 11.9
FIL 39.0
CL 1900
CAL 80.0
H2O 97.3
OIL 0.0
LGS 19.04
GELS 1/2/3
PV 1.0
YP 3.0
SOLS 2.4
CAKE 1/0

CG 91u

TG, C1-C4

CG 181u





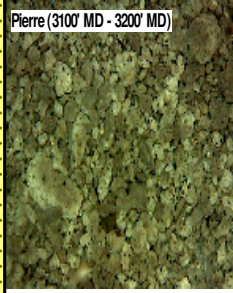
MD 3153 TVD 3140.29
INC 9 AZ 246.34
VS 171.63

ROP (ft/Hr)
Gamma (API)

MD 3248 TVD 3234.23
INC 8.07 AZ 243.37
VS 184.61

MD 3342 TVD 3327.35
INC 7.7 AZ 245.28
VS 196.43

Pierre (3100' MD - 3200' MD)



3100' MD-3200' MD: SLTST: 75% LTGY
- MEDLTGY, FRI, FN TO MED GRN,
W SRTD, CALC CMT, TRC PYR, TRC
IMBD GLAU, SANDY, FREE SLTYSH,
INTGR POR, NO STN, NO FLOR, NO
O FLOR, NO CUT, NO RNG

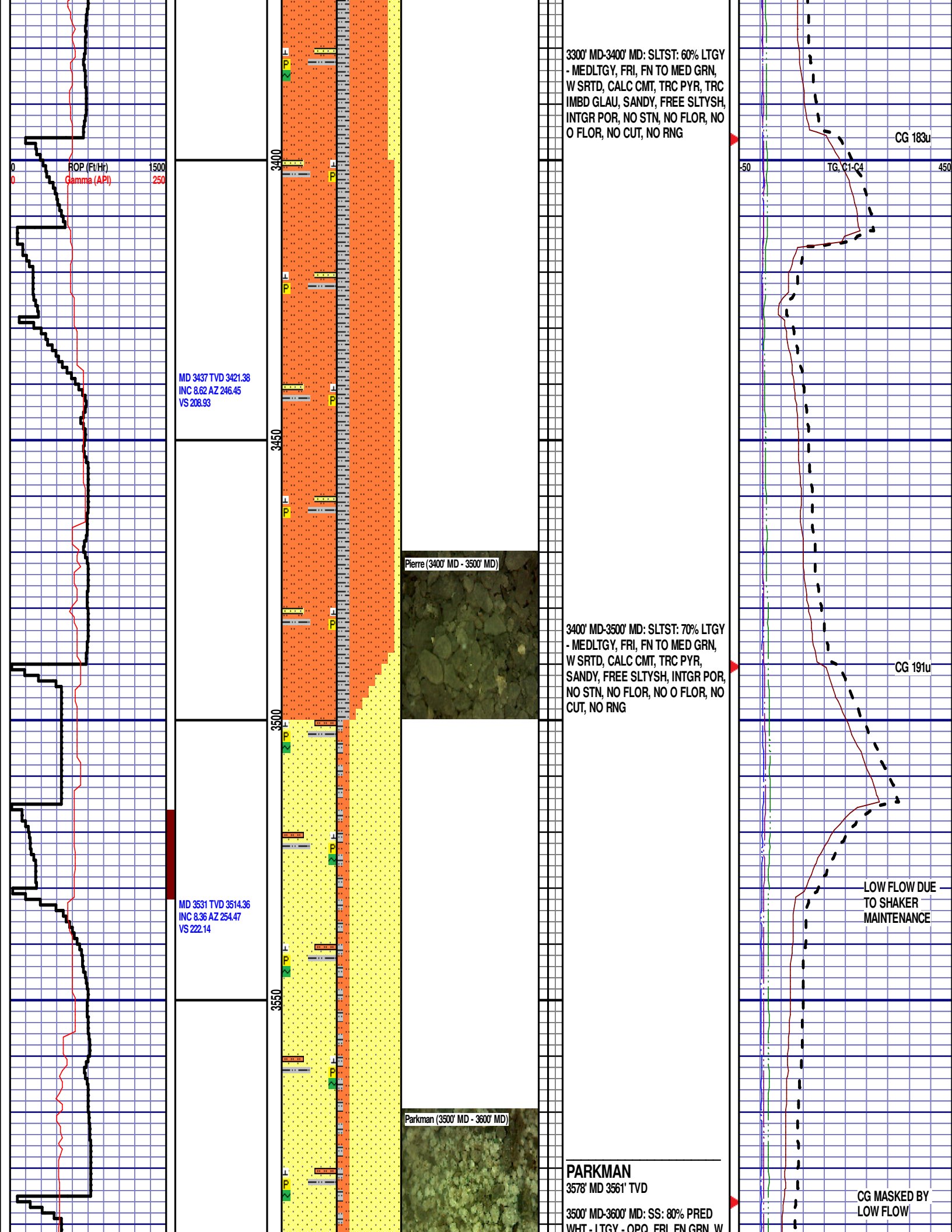
3200' MD-3300' MD: SLTST: 70% LTGY
- MEDLTGY, FRI, FN TO MED GRN,
W SRTD, CALC CMT, TRC PYR, TRC
IMBD GLAU, SANDY, FREE SLTYSH,
INTGR POR, NO STN, NO FLOR, NO
O FLOR, NO CUT, NO RNG

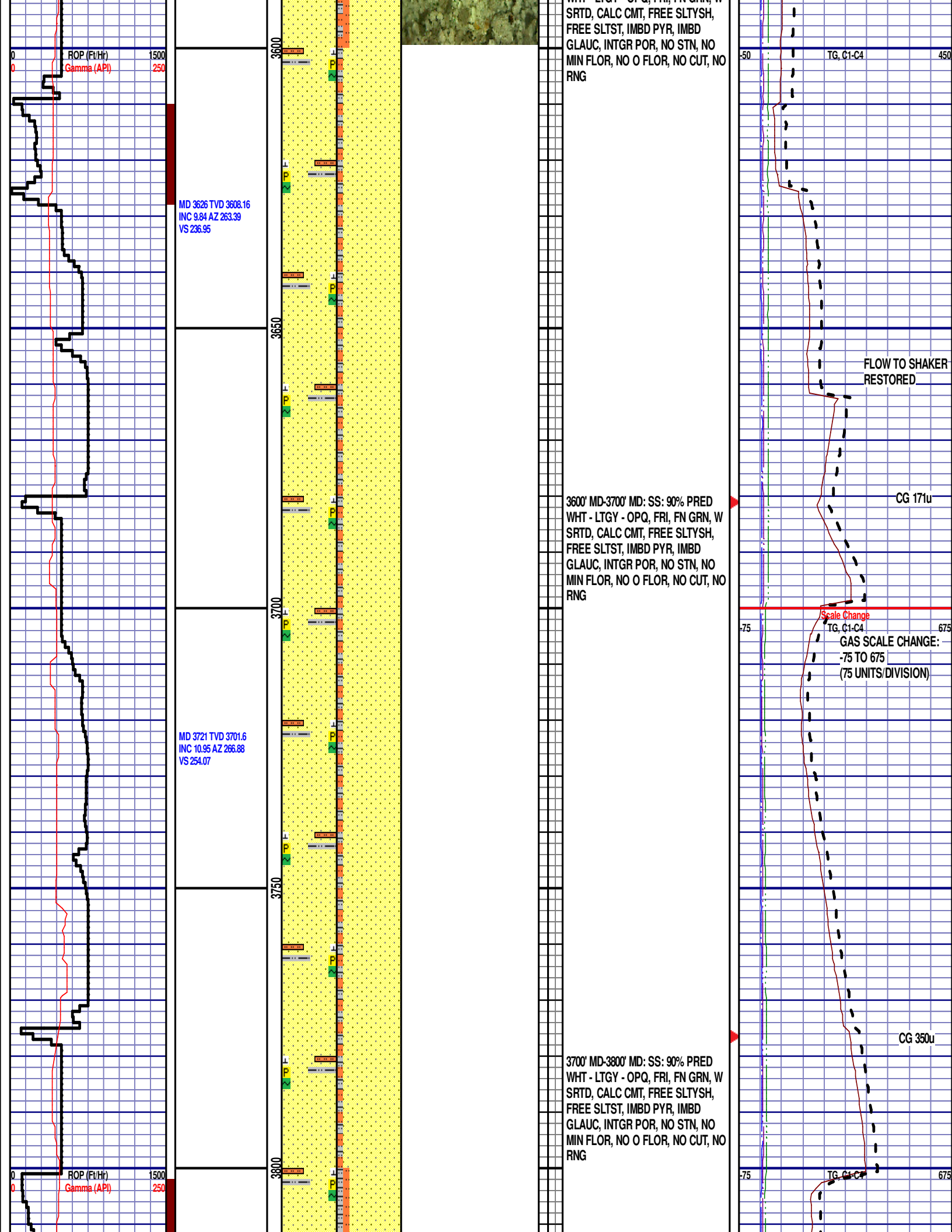
50 450

TG, C1-C4

CG 289u

CG 280u



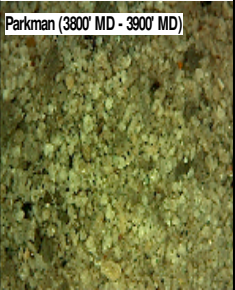


MD 3815 TVD 3793.95
INC 10.6 AZ 264.73
VS 271.62

MD 3910 TVD 3887.28
INC 10.88 AZ 262.39
VS 289.27

MD 4005 TVD 3980.64
INC 10.48 AZ 263.65
VS 306.82

Parkman (3800' MD - 3900' MD)



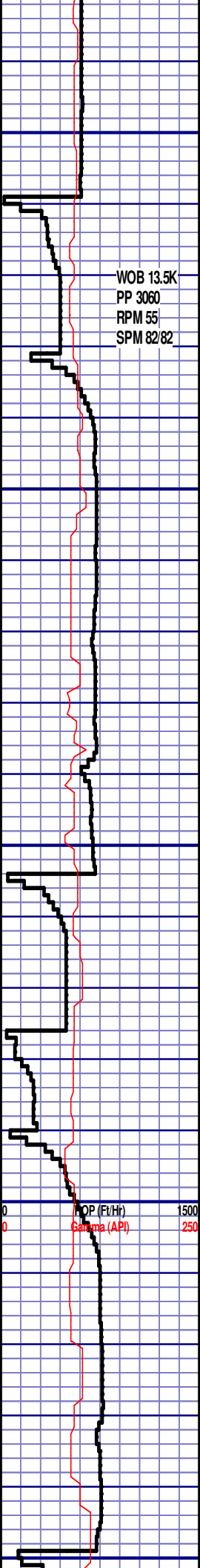
3800' MD-3900' MD: SS: 80% PRED
WHT - LTGY - OPQ, FRI, FN GRN, W
SRTD, CALC CMT, FREE SLTYSH,
FREE SLTST, IMBD PYR, IMBD
GLAUC, INTGR POR, NO STN, NO
MIN FLOR, NO O FLOR, NO CUT, NO
RNG

3900' MD-4000' MD: SLTST: 60% LTGY
- MEDLTGY, FRI, FN TO MED GRN,
W SRTD, CALC CMT, TRC PYR, TRC
IMBD GLAU, SANDY, FREE SLTYSH,
INTGR POR, NO STN, NO FLOR, NO
O FLOR, NO CUT, NO RNG

CG 169u

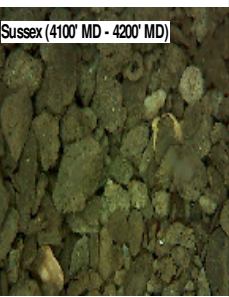
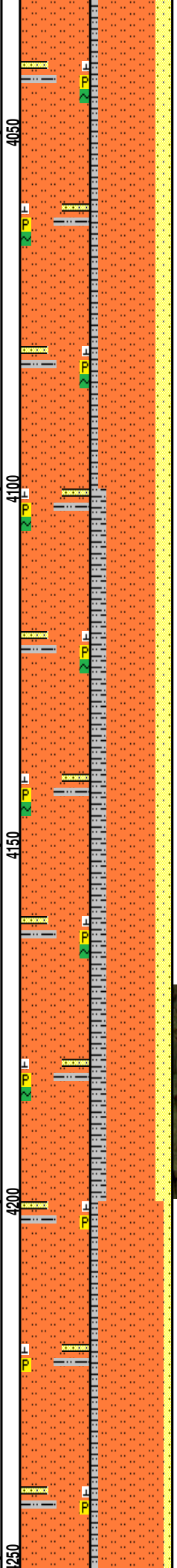
CG 228u

75 TG, C1-C4 675



MD 4100 TVD 4074.21
INC 9.42 AZ 261.01
VS 323.15

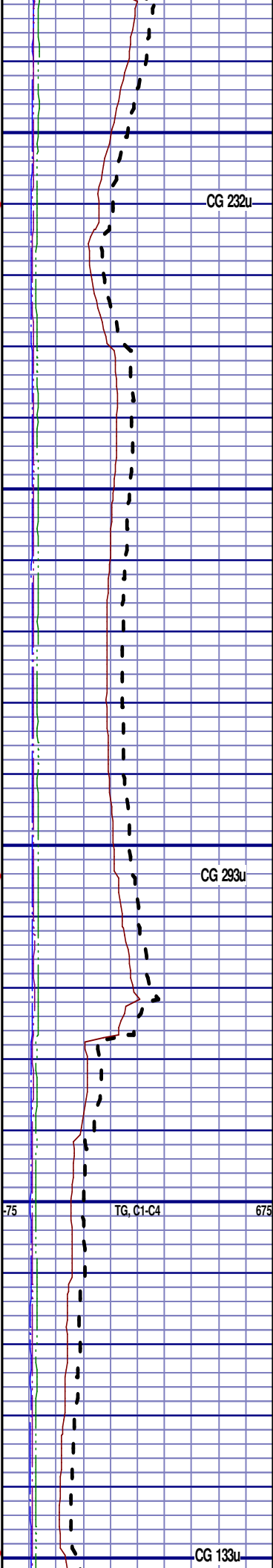
MD 4194 TVD 4166.89
INC 9.76 AZ 265.67
VS 338.75

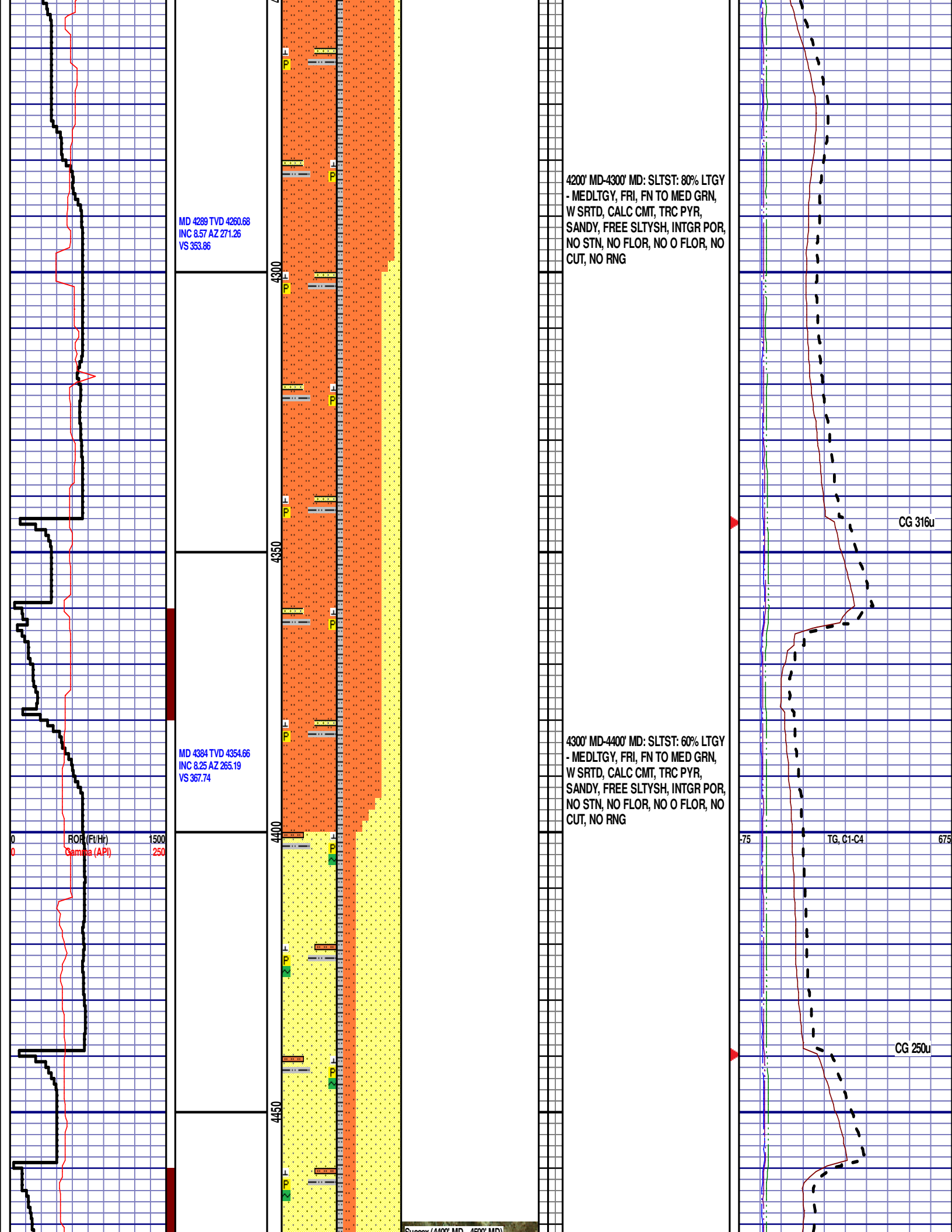


4000' MD-4100' MD: SLTST: 70% LTGY
- MEDLTGY, FRI, FN TO MED GRN,
W SRTD, CALC CMT, TRC PYR, TRC
IMBD GLAU, SANDY, FREE SLTYSH,
INTGR POR, NO STN, NO FLOR, NO
O FLOR, NO CUT, NO RNG

SUSSEX
4160' MD 4133' TVD

4100' MD-4200' MD: SLTST: 60% LTGY
- MEDLTGY, FRI, FN TO MED GRN,
W SRTD, CALC CMT, TRC PYR, TRC
IMBD GLAU, SANDY, FREE SLTYSH,
INTGR POR, NO STN, NO FLOR, NO
O FLOR, NO CUT, NO RNG





MD 4289 TVD 4260.68
INC 8.57 AZ 271.26
VS 353.86

MD 4384 TVD 4354.66
INC 8.25 AZ 265.19
VS 367.74

4200' MD-4300' MD: SLTST: 80% LTGY
- MEDLTGY, FRI, FN TO MED GRN,
W SRTD, CALC CMT, TRC PYR,
SANDY, FREE SLTYSH, INTGR POR,
NO STN, NO FLOR, NO O FLOR, NO
CUT, NO RNG

4300' MD-4400' MD: SLTST: 60% LTGY
- MEDLTGY, FRI, FN TO MED GRN,
W SRTD, CALC CMT, TRC PYR,
SANDY, FREE SLTYSH, INTGR POR,
NO STN, NO FLOR, NO O FLOR, NO
CUT, NO RNG

CG 316u

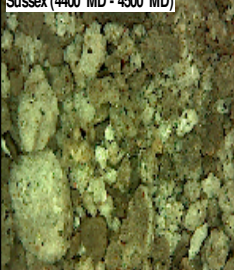
CG 250u

TG, C1-C4

MD 4479 TVD 4448.56
INC 9.17 AZ 263.88
VS 382.1

MD 4574 TVD 4542.18
INC 10.44 AZ 255.6
VS 398.06

MD 4668 TVD 4634.84
INC 8.89 AZ 254.1
VS 413.44



4400' MD-4500' MD: SS: 70% PRED
WHT - LTGY - OPQ, FRI, FN GRN, W
SRTD, CALC CMT, FREE SLTYSH,
FREE SLTST, IMBD PYR, IMBD
GLAUC, INTGR POR, NO STN, NO
MIN FLOR, NO O FLOR, NO CUT, NO
RNG

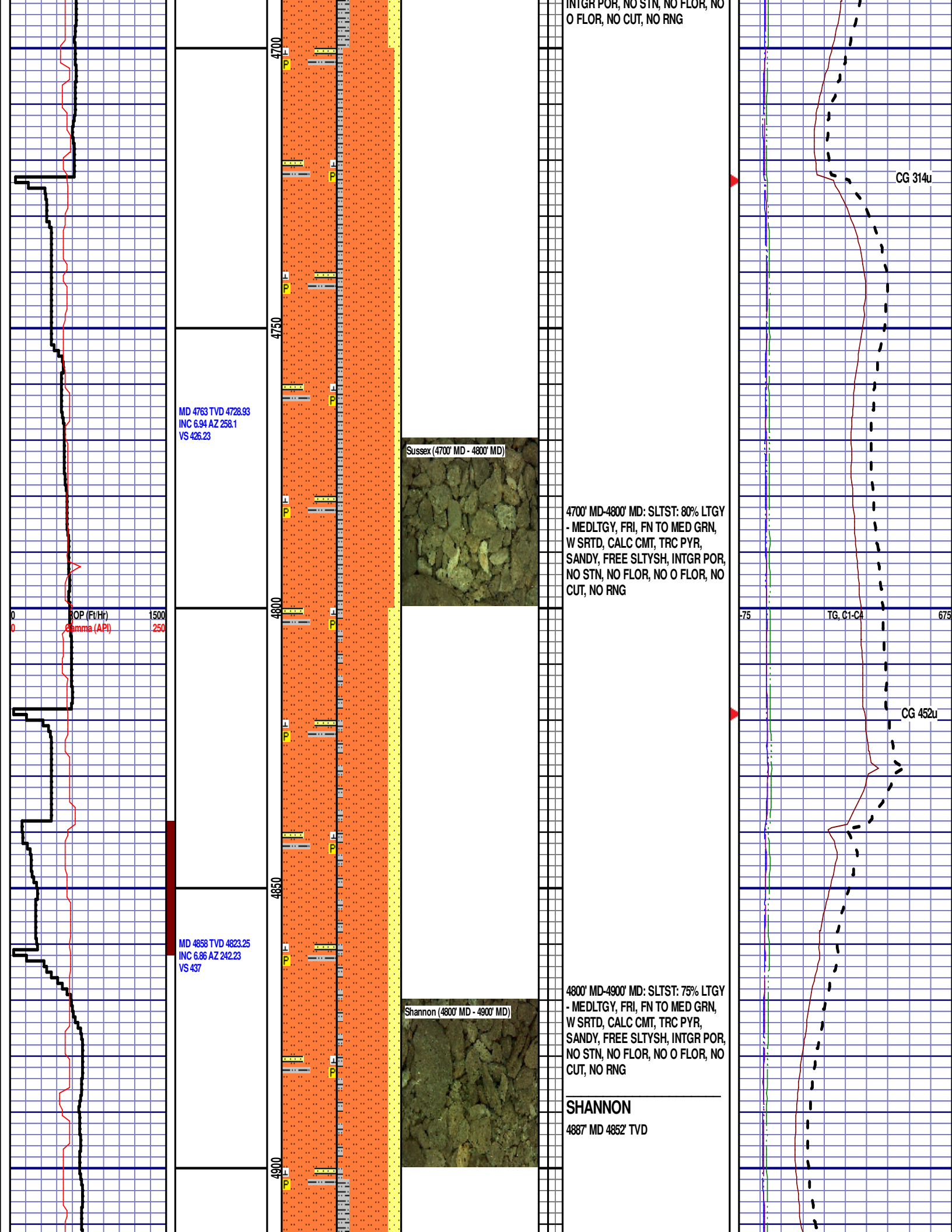
4500' MD-4600' MD: SLTST: 60% LTGY
- MEDLTGY, FRI, FN TO MED GRN,
W SRTD, CALC CMT, TRC PYR, TRC
IMBD GLAU, SANDY, FREE SLTYSH,
INTGR POR, NO STN, NO FLOR, NO
O FLOR, NO CUT, NO RNG

4600' MD-4700' MD: SLTST: 60% LTGY
- MEDLTGY, FRI, FN TO MED GRN,
W SRTD, CALC CMT, TRC PYR, TRC
IMBD GLAU, SANDY, FREE SLTYSH,
INTGR POR, NO STN, NO FLOR, NO
O FLOR, NO CUT, NO RNG

CG 248u

CG 170u

75 TG, C1-C4 675



INTGR POR, NO STN, NO FLOR, NO
O FLOR, NO CUT, NO RNG

CG 314u

MD 4763 TVD 4728.93
INC 6.94 AZ 258.1
VS 426.23

Sussex (4700' MD - 4800' MD)

4700' MD-4800' MD: SLTST: 80% LTGY
- MEDLTGY, FRI, FN TO MED GRN,
W SRTD, CALC CMT, TRC PYR,
SANDY, FREE SLTYSH, INTGR POR,
NO STN, NO FLOR, NO O FLOR, NO
CUT, NO RNG

ROP (Ft/Hr) 1500
Gamma (API) 250

75 TG, C1-C4 675

CG 452u

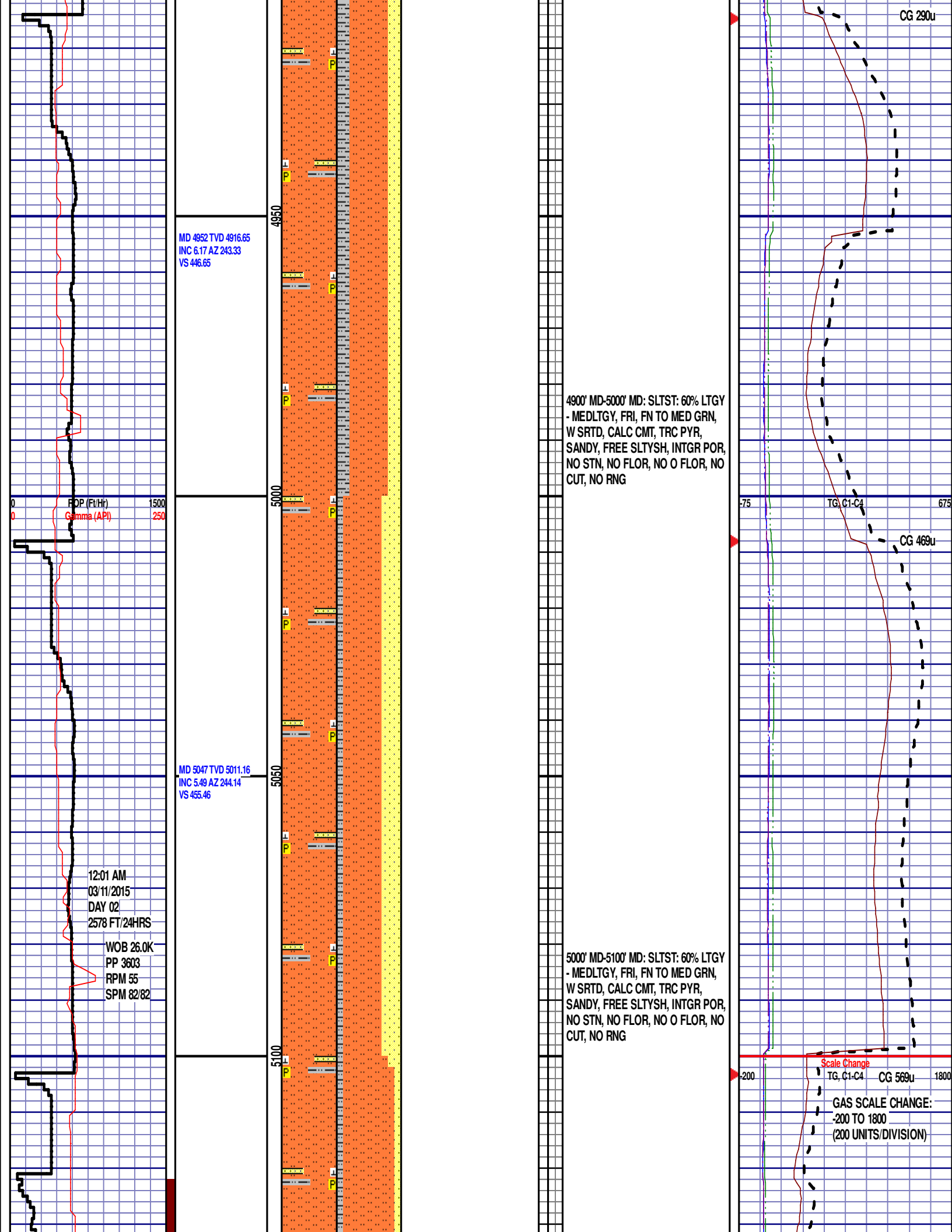
MD 4858 TVD 4823.25
INC 6.86 AZ 242.23
VS 437

Shannon (4800' MD - 4900' MD)

4800' MD-4900' MD: SLTST: 75% LTGY
- MEDLTGY, FRI, FN TO MED GRN,
W SRTD, CALC CMT, TRC PYR,
SANDY, FREE SLTYSH, INTGR POR,
NO STN, NO FLOR, NO O FLOR, NO
CUT, NO RNG

SHANNON

4887' MD 4852' TVD



MD 5141 TVD 5104.92
INC 2.62 AZ 265.62
VS 461.72

5150

5200

5250

5300

5350

MD 5236 TVD 5199.84
INC 1.79 AZ 276.6
VS 465.36

MD 5330 TVD 5293.83
INC 0.45 AZ 155.88
VS 466.67

Shannon (5100' MD - 5200' MD)

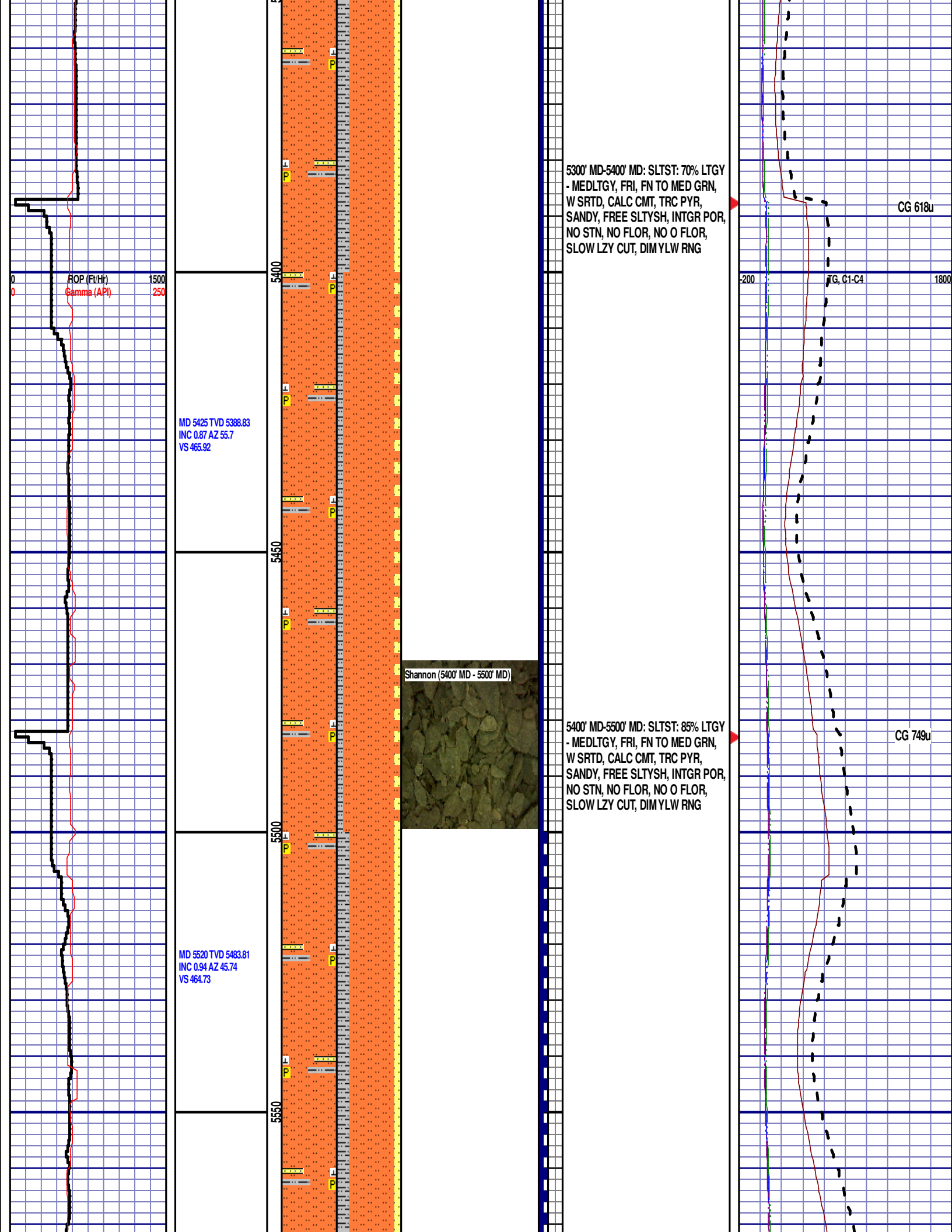
5100' MD-5200' MD: SLTST: 80% LTGY
- MEDLTGY, FRI, FN TO MED GRN,
W SRTD, CALC CMT, TRC PYR,
SANDY, FREE SLTYSH, INTGR POR,
NO STN, NO FLOR, NO O FLOR, NO
CUT, NO RNG

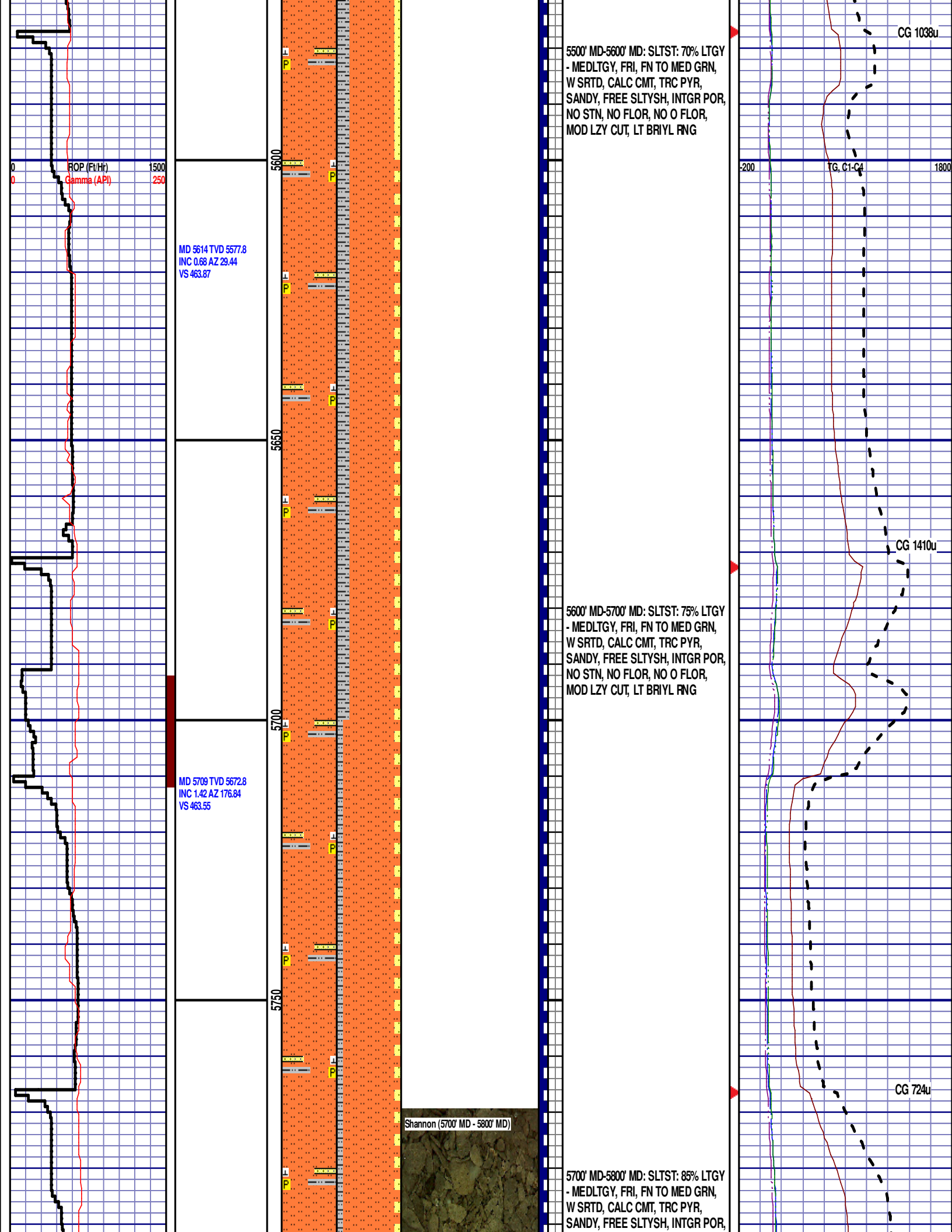
5200' MD-5300' MD: SLTST: 85% LTGY
- MEDLTGY, FRI, FN TO MED GRN,
W SRTD, CALC CMT, TRC PYR,
SANDY, FREE SLTYSH, INTGR POR,
NO STN, NO FLOR, NO O FLOR,
SLOW LZY CUT, DIM YLW RNG

CG 402u

TG, C1-C4

CG 832u





5500' MD-5600' MD: SLTST: 70% LTGY
- MEDLTGY, FRI, FN TO MED GRN,
W SRTD, CALC CMT, TRC PYR,
SANDY, FREE SLTYSH, INTGR POR,
NO STN, NO FLOR, NO O FLOR,
MOD LZY CUT, LT BRIYL RNG

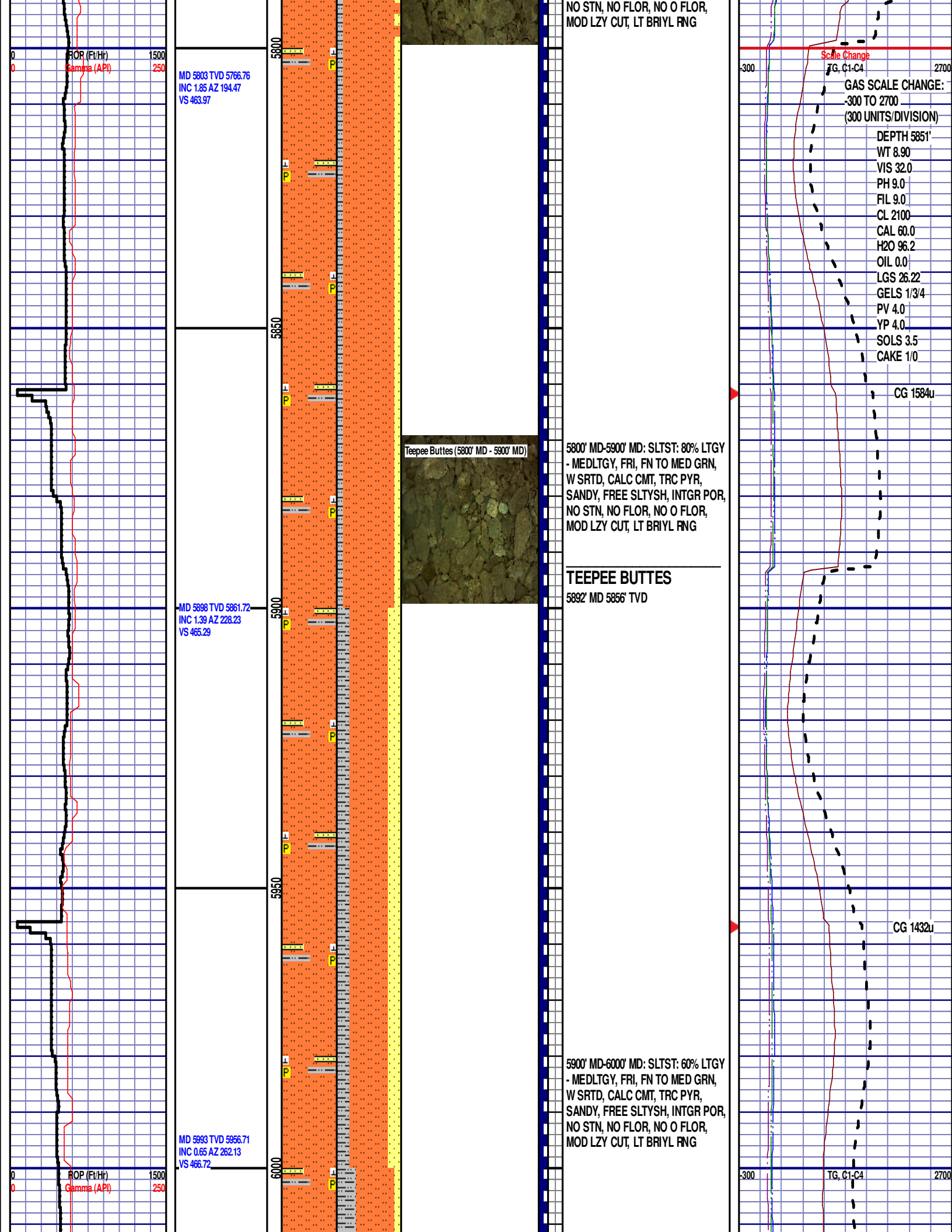
MD 5614 TVD 5577.8
INC 0.68 AZ 29.44
VS 463.87

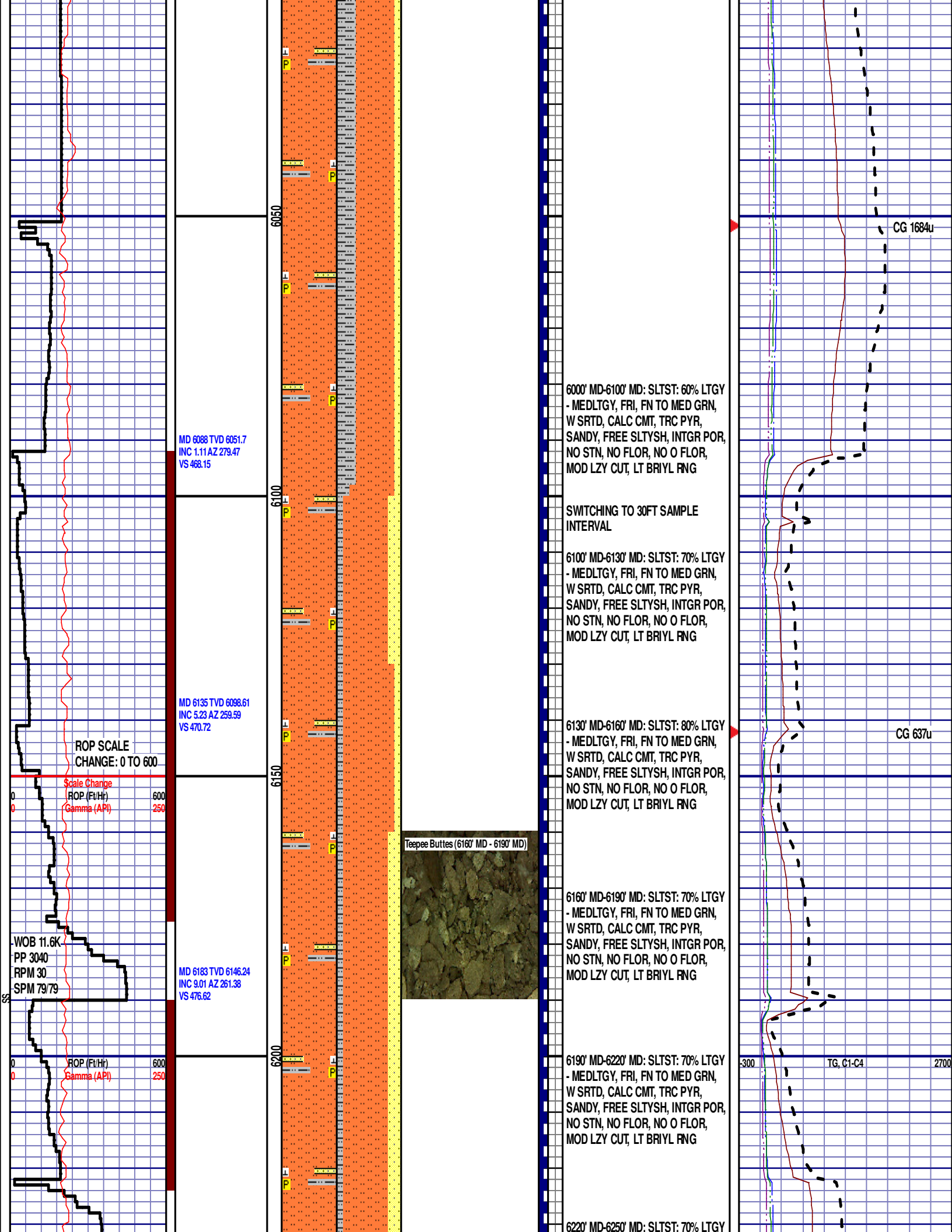
MD 5709 TVD 5672.8
INC 1.42 AZ 176.84
VS 463.55

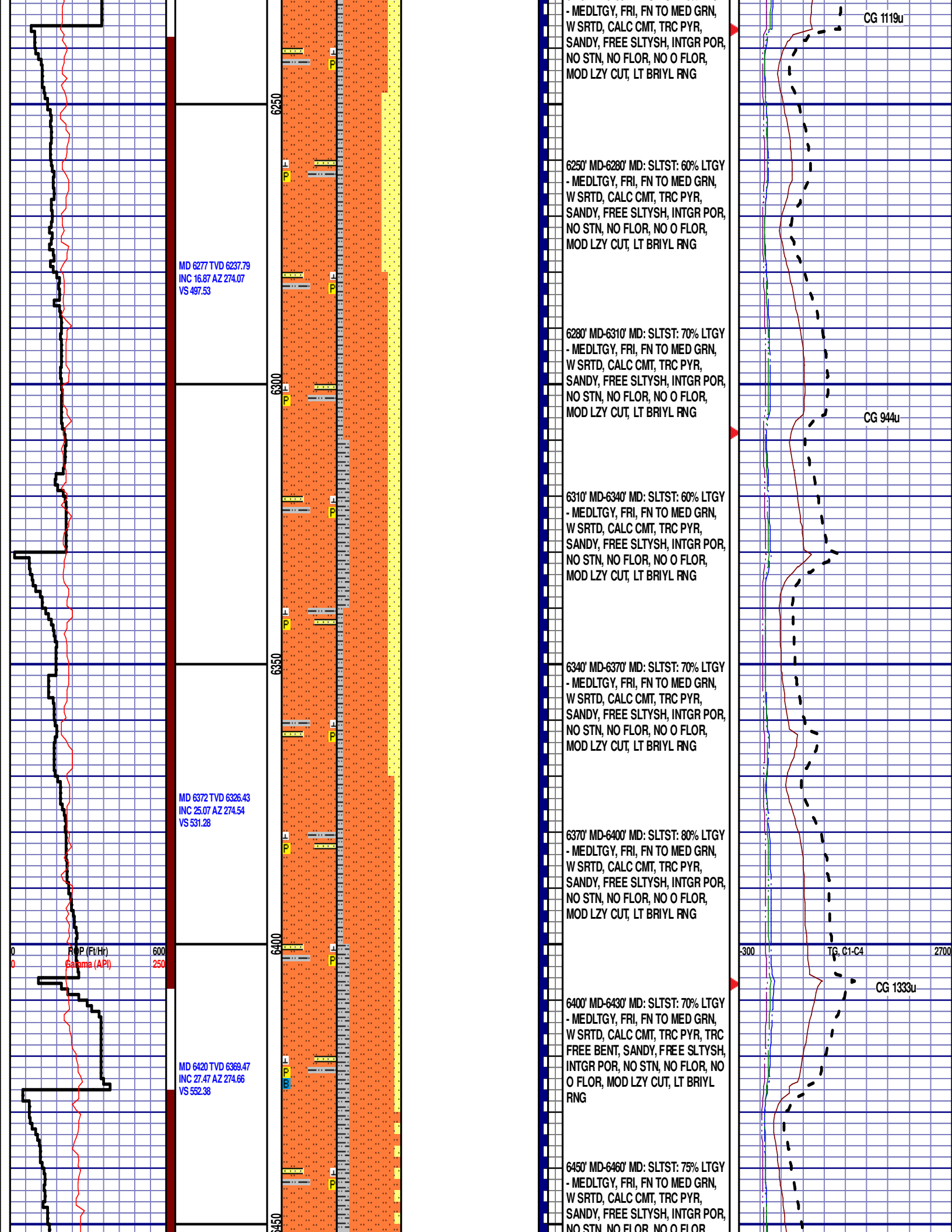
Shannon (5700' MD - 5800' MD)

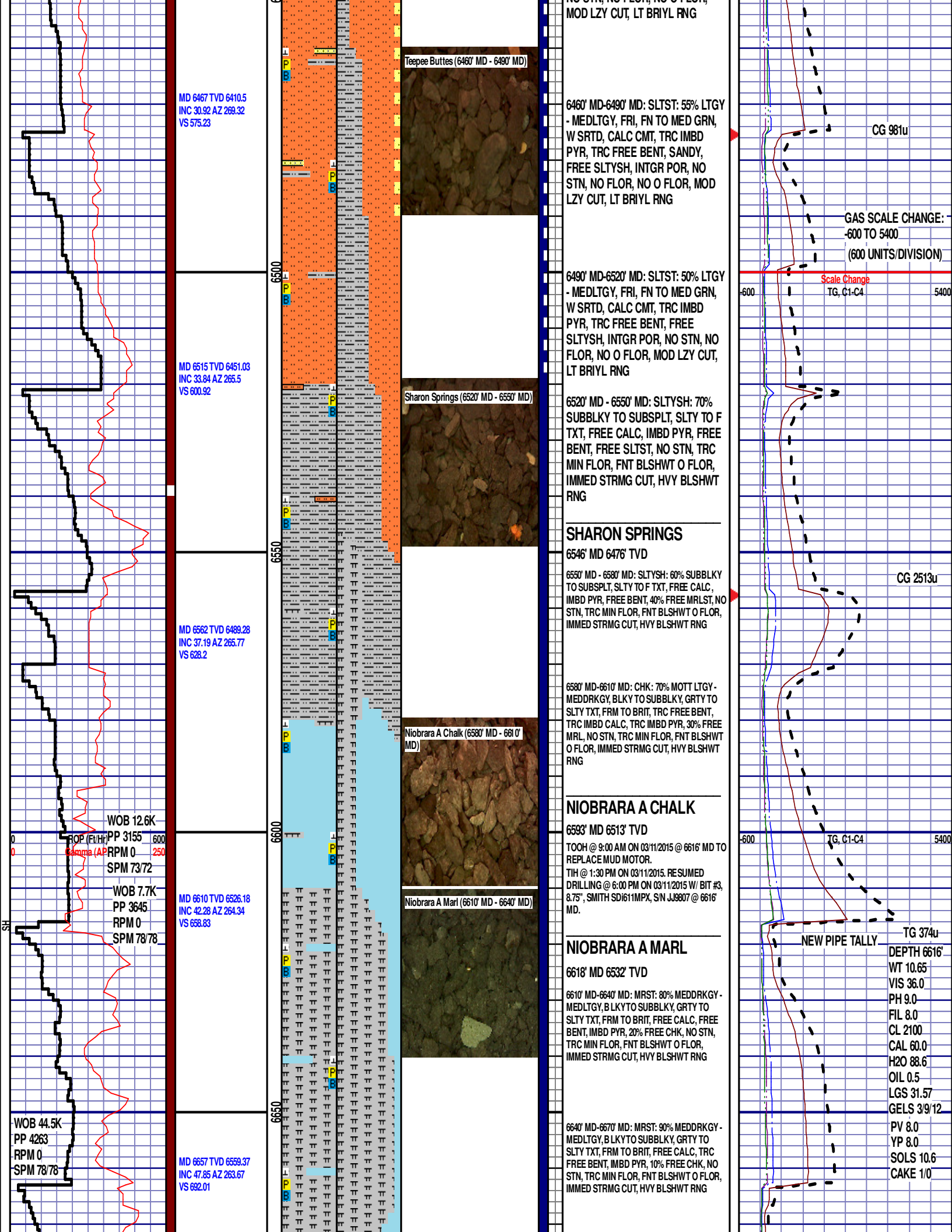
5600' MD-5700' MD: SLTST: 75% LTGY
- MEDLTGY, FRI, FN TO MED GRN,
W SRTD, CALC CMT, TRC PYR,
SANDY, FREE SLTYSH, INTGR POR,
NO STN, NO FLOR, NO O FLOR,
MOD LZY CUT, LT BRIYL RNG

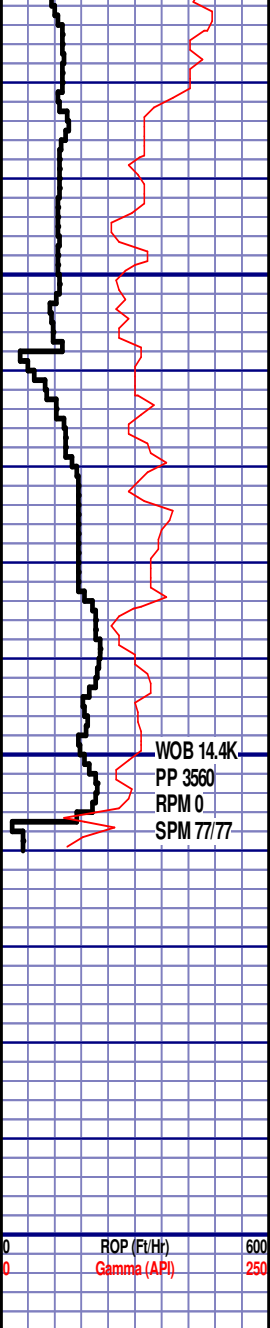
5700' MD-5800' MD: SLTST: 85% LTGY
- MEDLTGY, FRI, FN TO MED GRN,
W SRTD, CALC CMT, TRC PYR,
SANDY, FREE SLTYSH, INTGR POR,





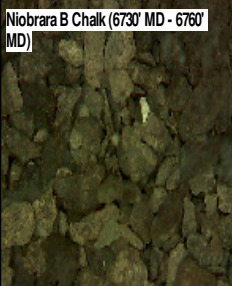
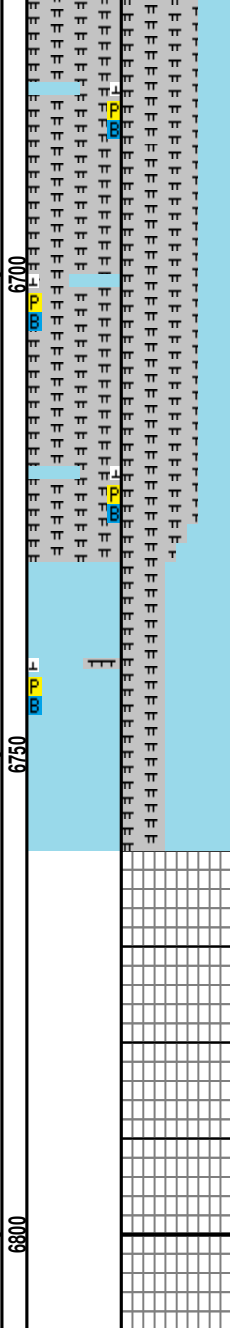






MD 6705 TVD 6589.27
INC 55.01 AZ 263.48
VS 729.41

MD 6752 TVD 6614.5
INC 60.07 AZ 267.08
VS 769



6670' MD-6700' MD: MRST: 70% MEDDRKGY - MEDLTGY, B LKY TO SUBBLKY, GRTY TO SLTY TXT, FRM TO BRIT, FREE CALC, TRC FREE BENT, IMBD PYR, 30% FREE CHK, NO STN, TRC MIN FLOR, FNT BLSHWT O FLOR, IMMED STRMG CUT, HVY BLSHWT RNG

6700' MD-6730' MD: MRST: 70% MEDDRKGY - MEDLTGY, B LKY TO SUBBLKY, GRTY TO SLTY TXT, FRM TO BRIT, FREE CALC, TRC FREE BENT, IMBD PYR, 30% FREE CHK, NO STN, TRC MIN FLOR, FNT BLSHWT O FLOR, IMMED STRMG CUT, HVY BLSHWT RNG

6730' MD-6760' MD: CHK: 60% MOTT LTGY - MEDDRKGY - DRKGY, BLKY TO SUBBLKY, GRTY TO SLTY TXT, FRM TO BRIT, TRC FREE BENT, IMBD CALC, IMBD PYR, 40% FREE MRL, NO STN, TRC MIN FLOR, FNT BLSHWT O FLOR, IMMED STRMG CUT, HVY BLSHWT RNG

NIORARA B CHALK

6756' MD 6616' TVD

END OF VERTICAL LOG @ 6760' MD
ON 03/11/2015, CONTINUED ON
HORIZONTAL LOG

