

Schlumberger

Company: PetroPro Engineering, Inc

Well: Winn 2

Field: 3rd Creek

County: Adams

State: CO

CBL, CCL, GR, WTEP, WPRE

County: Adams  
Field: 3rd Creek  
Location: 1200' FSL, 600' FWL  
Well: Winn 2  
Company: PetroPro Engineering, Inc

| LOCATION                       |               |  |                               |  |
|--------------------------------|---------------|--|-------------------------------|--|
| 1200' FSL, 600' FWL            |               | Elev.:    K.B.    5269.00 ft<br>G.L.    5259.00 ft<br>D.F.    5269.00 ft |                               |  |
| Permanent Datum:               | GROUND LEVEL  |  | Elev.: 5259.00 ft             |  |
| Log Measured From:             | Kelly Bushing |  | 10.00 ft    above Perm. Datum |  |
| Drilling Measured From:        | Kelly Bushing |  |                               |  |
| API Serial No.<br>05-001-06922 | Section<br>6  | Township<br>2S   | Range<br>65W                  |  |

|                          |         | Run 1 | Run 2 | Run |
|--------------------------|---------|-------|-------|-----|
| PVT DATA                 |         |       |       |     |
| Oil Density              |         |       |       |     |
| Water Salinity           |         |       |       |     |
| Gas Gravity              |         |       |       |     |
| Bo                       |         |       |       |     |
| Bw                       |         |       |       |     |
| 1/Bg                     |         |       |       |     |
| Bubble Point Pressure    |         |       |       |     |
| Bubble Point Temperature |         |       |       |     |
| Solution GOR             |         |       |       |     |
| Maximum Deviation        |         |       |       |     |
| CEMENTING DATA           |         |       |       |     |
| Primary/Squeeze          | Primary |       |       |     |
| Casing String No         |         |       |       |     |
| Lead Cement Type         |         |       |       |     |
| Volume                   |         |       |       |     |
| Density                  |         |       |       |     |
| Water Loss               |         |       |       |     |
| Additives                |         |       |       |     |
| Tail Cement Type         |         |       |       |     |
| Volume                   |         |       |       |     |
| Density                  |         |       |       |     |
| Water Loss               |         |       |       |     |
| Additives                |         |       |       |     |
| Expected Cement Top      |         |       |       |     |

Logging Date 26-Aug-2015

Run Number 1

Depth Driller 8400 ft

Schlumberger Depth 7780 ft

Bottom Log Interval 7780 ft

Top Log Interval 7300 ft

Casing Fluid Type Fresh Water

Salinity

Density 8.4 lbm/gal

Fluid Level

BIT/CASING/TUBING STRING

Bit Size 8.000 in

From

To

Casing/Tubing Size 4.500 in

Weight 11.6 lbm/ft

Grade

From

To

Maximum Recorded Temperatures 218 degF

Logger On Bottom 26-Aug-2015

Unit Number 354

Location 6690

Recorded By Shelby Langford

Witnessed By

Logging Date

Run Number

Depth Driller

Schlumberger Depth

Bottom Log Interval

Top Log Interval

Casing Fluid Type

Salinity

Density

Fluid Level

BIT/CASING/TUBING STRING

Bit Size

From

To

Casing/Tubing Size

Weight

Grade

From

To

Maximum Recorded Temperatures

Logger On Bottom

Unit Number

Location

Recorded By

Witnessed By

## DEPTH SUMMARY LISTING

Date Created: 25-AUG-2015 16:37:58

## Depth System Equipment

| Depth Measuring Device    |             | Tension Device                |             | Logging Cable                                 |          |
|---------------------------|-------------|-------------------------------|-------------|---|----------|
| Type:                     | IDW-B       | Type:                         | CMTD-B/A    | Type:   | 1-25ZT   |
| Serial Number:            | 5783        | Serial Number:                | 1163        | Serial Number:                                | 354      |
| Calibration Date:         | 10-Aug-2015 | Calibration Date:             | 21-Aug-2015 | Length:                                       | 17000 FT |
| Calibrator Serial Number: |             | Calibrator Serial Number:     | 1150        | Conveyance Method: Wireline<br>Rig Type: LAND |          |
| Calibration Cable Type:   | 1-25ZT      | Number of Calibration Points: | 10          |   |          |
| Wheel Correction 1:       | -3          | Calibration RMS:              | 7           |   |          |
| Wheel Correction 2:       | -3          | Calibration Peak Error:       | 13          |   |          |

## Depth Control Parameters

|                             |                       |
|-----------------------------|-----------------------|
| Log Sequence:               | First Log In the Well |
| Rig Up Length At Surface:   | 0.00 FT               |
| Rig Up Length At Bottom:    | 0.00 FT               |
| Rig Up Length Correction:   | 0.00 FT               |
| Stretch Correction:         |                       |
| Tool Zero Check At Surface: | 2.00 FT               |

### Depth Control Remarks

1. GR Peak @ 7480'
- 2.
3. DV Tool @ 1625'
- 4.
- 5.
- 6.

## DISCLAIMER

THE USE OF AND RELIANCE UPON THIS RECORDED-DATA BY THE HEREIN NAMED COMPANY (AND ANY OF ITS AFFILIATES, PARTNERS, REPRESENTATIVES, AGENTS, CONSULTANTS AND EMPLOYEES) IS SUBJECT TO THE TERMS AND CONDITIONS AGREED UPON BETWEEN SCHLUMBERGER AND THE COMPANY, INCLUDING: (a) RESTRICTIONS ON USE OF THE RECORDED-DATA; (b) DISCLAIMERS AND WAIVERS OF WARRANTIES AND REPRESENTATIONS REGARDING COMPANY'S USE OF AND RELIANCE UPON THE RECORDED-DATA; AND (c) CUSTOMER'S FULL AND SOLE RESPONSIBILITY FOR ANY INFERENCE DRAWN OR DECISION MADE IN CONNECTION WITH THE USE OF THIS RECORDED-DATA.

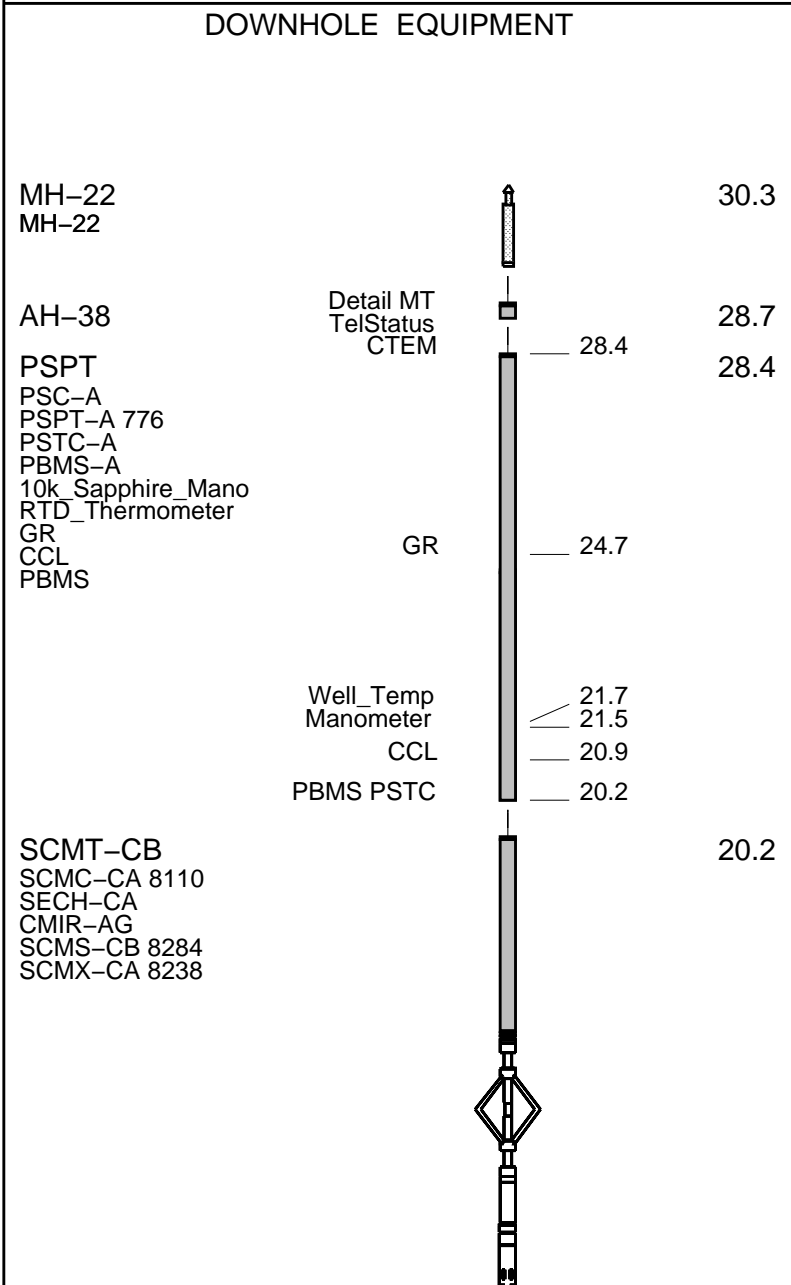
|  |   |
|--|---|
| OTHER SERVICES1<br>OS1: NONE<br>OS2:<br>OS3:<br>OS4:<br>OS5: | OTHER SERVICES2<br>OS1:<br>OS2:<br>OS3:<br>OS4:<br>OS5: |
| REMARKS: RUN NUMBER 1  | REMARKS: RUN NUMBER 2                                   |
| Coreelated to Log ran by Dresser Atlas April 1975            |   |
|  |   |
| Correlated to Gamma Ray peak 7480'                           |   |
|  |   |
|  |   |
|  |   |
|  |   |

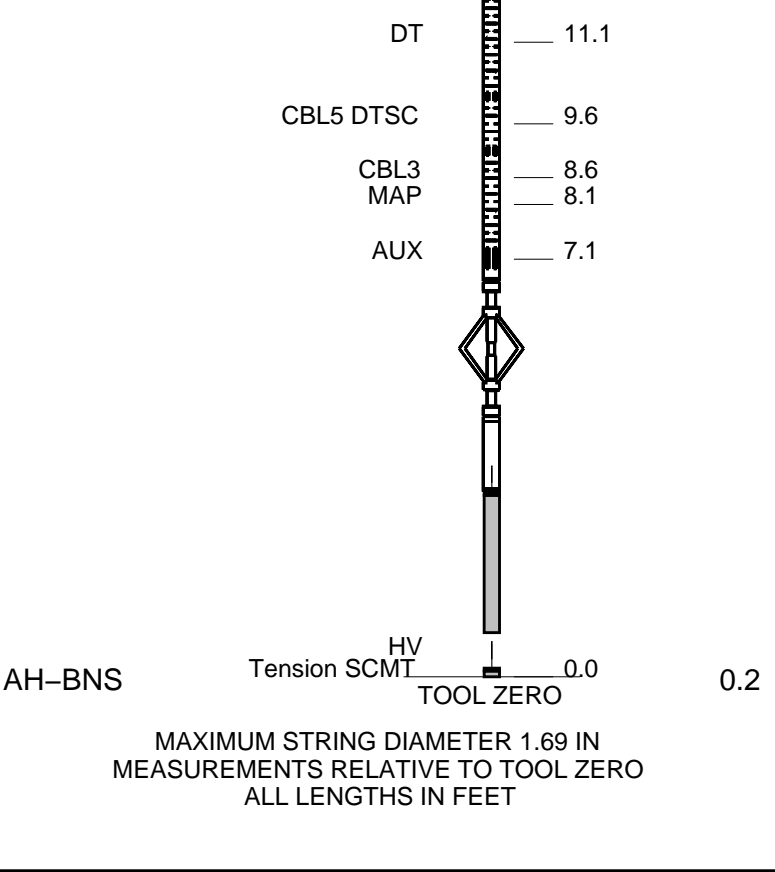
|                                      |  |
|--------------------------------------|--|
|                                      |  |
|                                      |  |
|                                      |  |
|                                      |  |
|                                      |  |
| Thank You for choosing E&P Wireline. |  |
| Your Crew today has been             |  |
| Roger Wiley                          |  |
| Mark Hoffman                         |  |
| John White                           |  |
| Shelby Langford                      |  |

| RUN 1            |       |      | RUN 2            |       |      |
|------------------|-------|------|------------------|-------|------|
| SERVICE ORDER #: |       |      | SERVICE ORDER #: |       |      |
| PROGRAM VERSION: |       |      | PROGRAM VERSION: |       |      |
| FLUID LEVEL:     |       |      | FLUID LEVEL:     |       |      |
| LOGGED INTERVAL  | START | STOP | LOGGED INTERVAL  | START | STOP |
|                  |       |      |                  |       |      |
|                  |       |      |                  |       |      |
|                  |       |      |                  |       |      |
|                  |       |      |                  |       |      |

| EQUIPMENT DESCRIPTION |  |  |       |  |  |
|-----------------------|--|--|-------|--|--|
| RUN 1                 |  |  | RUN 2 |  |  |

SURFACE EQUIPMENT  
 WITM-A  
 PSC\_16MHZ





Lower Main Pass  
0 Surface PSI

MAXIS Field Log

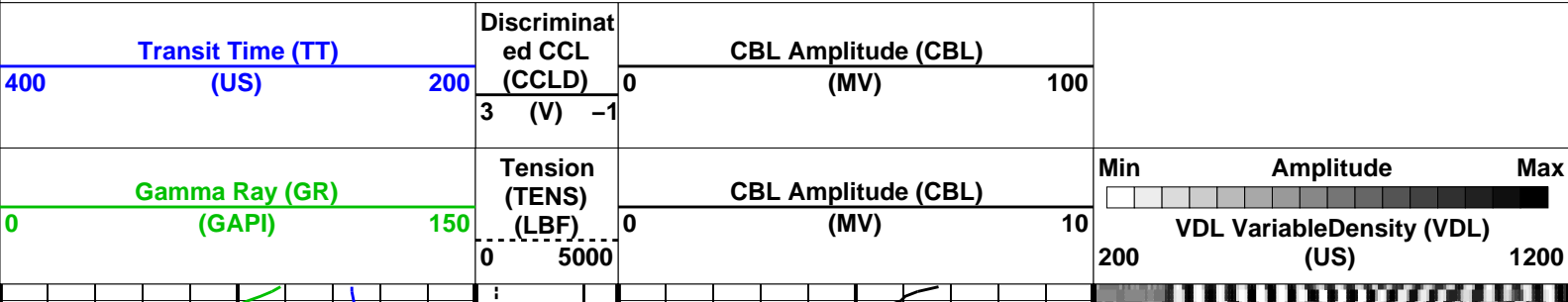
Company: PetroPro Engineering, Inc Well: Winn 2

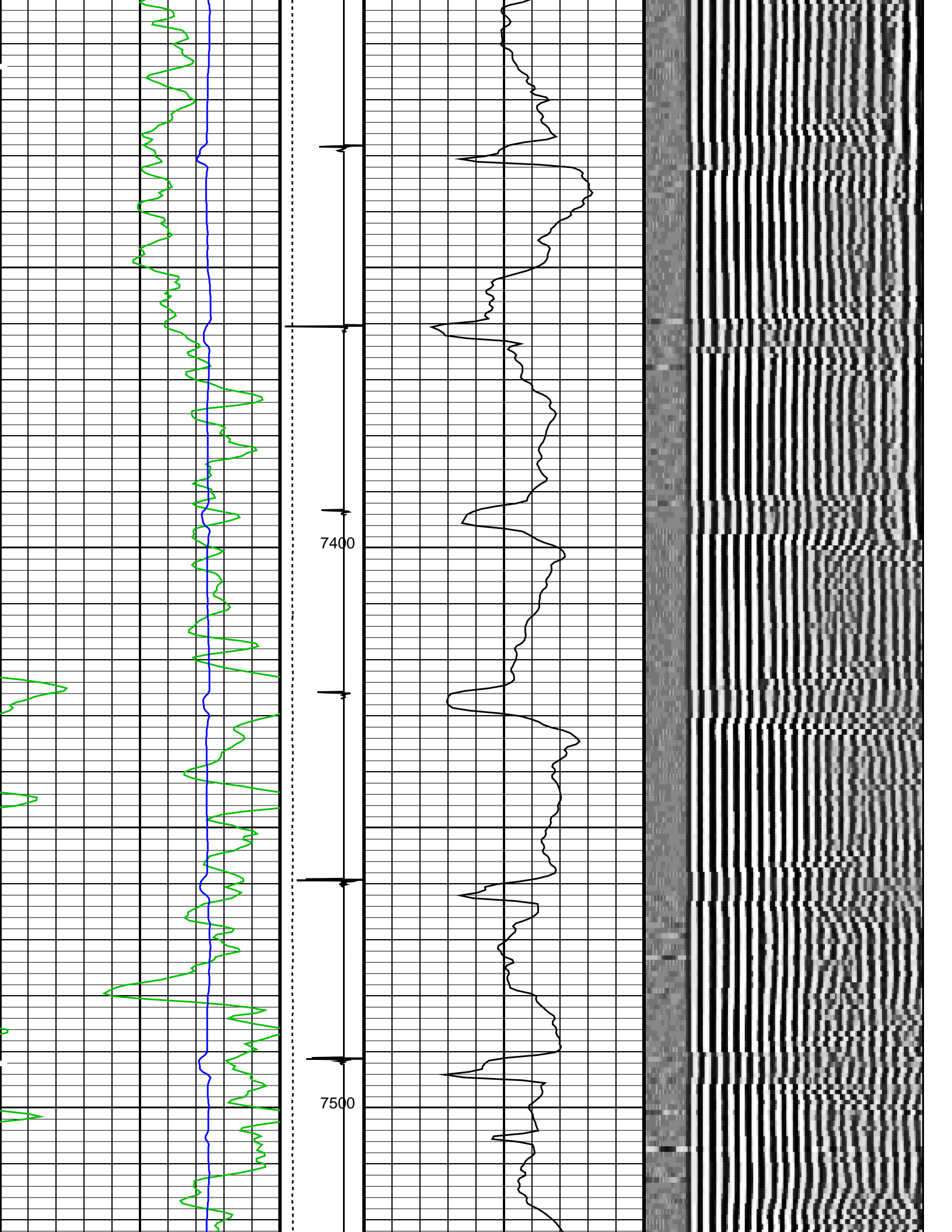
| Input DLIS Files |                 |       |          |                   |           |           |
|------------------|-----------------|-------|----------|-------------------|-----------|-----------|
| DEFAULT          | SCMT_PSP_041PUP | FN:39 | PRODUCER | 26-Aug-2015 16:45 | 7831.0 FT | 1172.5 FT |

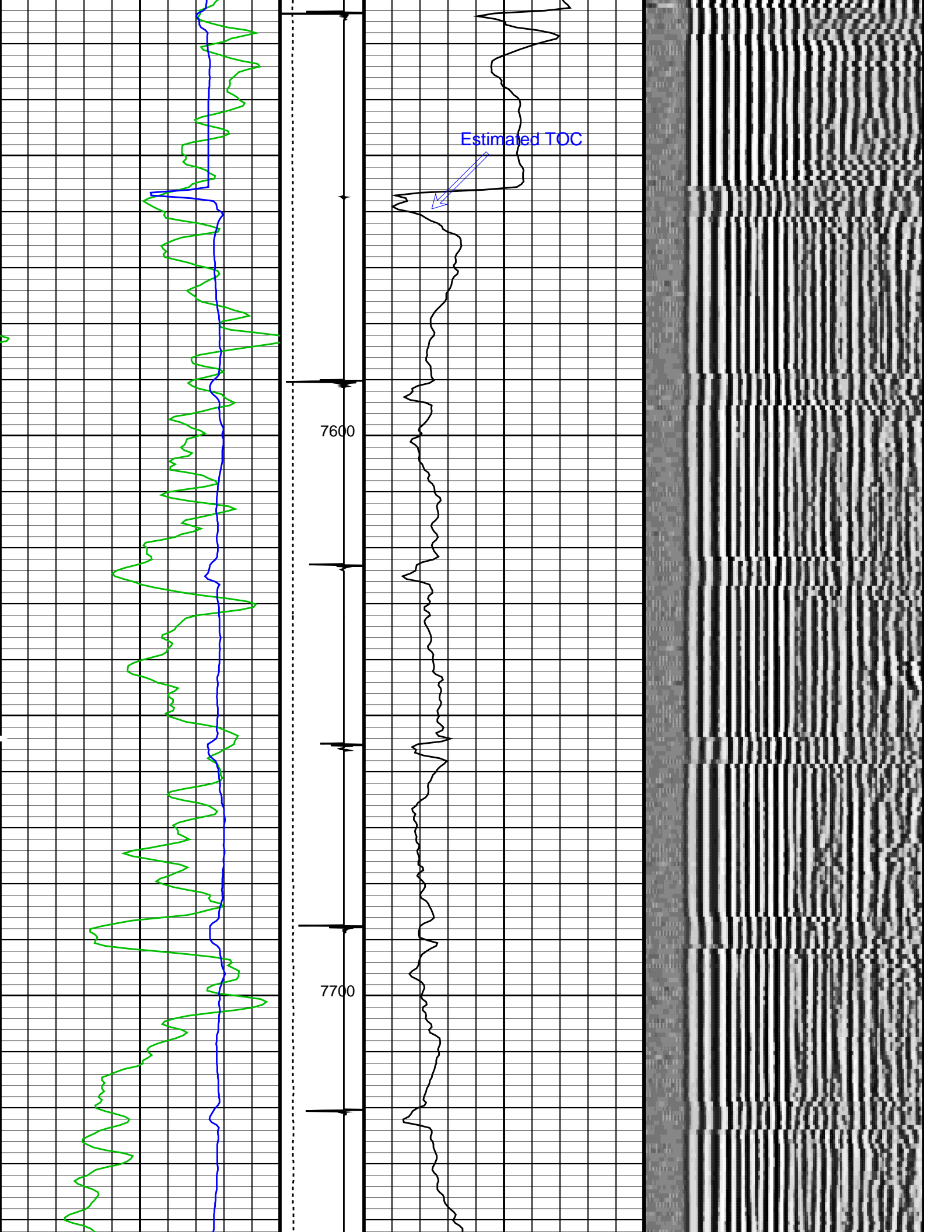
| Output DLIS Files |                 |       |          |                   |           |           |
|-------------------|-----------------|-------|----------|-------------------|-----------|-----------|
| DEFAULT           | SCMT_PSP_042PUP | FN:40 | PRODUCER | 26-Aug-2015 16:52 | 7800.0 FT | 7300.0 FT |

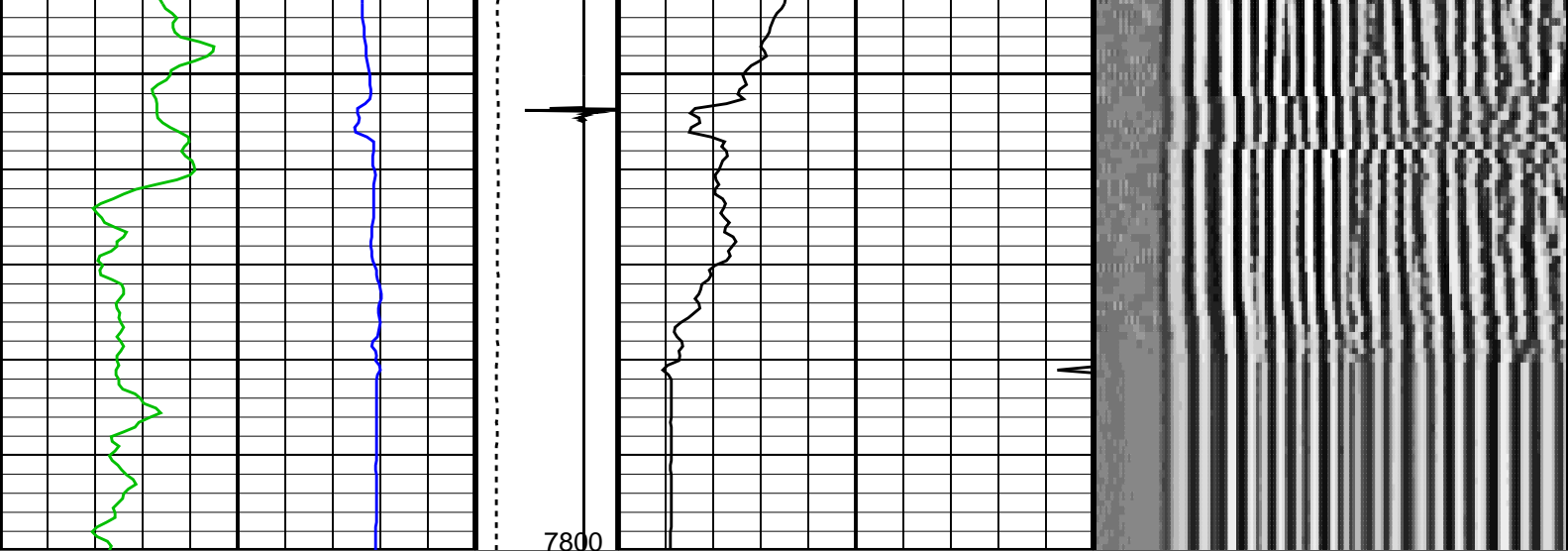
| OP System Version: 19C0-187 |                        |      |          |
|-----------------------------|------------------------|------|----------|
| SCMT-CB                     | SRPC-5095-H2-2011-OP19 | PSPT | 19C0-187 |

| PIP SUMMARY          |  |  |  |
|----------------------|--|--|--|
| Time Mark Every 60 S |  |  |  |









|                           |     |  |                             |            |   |             |
|---------------------------|-----|--|-----------------------------|------------|---|-------------|
| Gamma Ray (GR)<br>(GAPI)  |     | Tension<br>(TENS)<br>(LBF)             | CBL Amplitude (CBL)<br>(MV) | Min<br>200 | Amplitude<br>VDL Variable Density (VDL)<br>(US) | Max<br>1200 |
| 0                         | 150 | 0 5000                                 | 0 10                        |            |   |             |
| Transit Time (TT)<br>(US) |     | Discriminat<br>ed CCL<br>(CCLD)<br>(V) | CBL Amplitude (CBL)<br>(MV) |            |   |             |
| 400                       | 200 | 3 -1                                   | 0 100                       |            |   |             |

#### PIP SUMMARY

Time Mark Every 60 S

Format: CBL\_VDL Vertical Scale: 5" per 100'

Graphics File Created: 26-Aug-2015 16:52

### OP System Version: 19C0-187

SCMT-CB SRPC-5095-H2-2011-OP19 PSPT 19C0-187

#### <<<SCMT Cement Evaluation Information Summary>>>

|  |              |                                 |  |
|--|--------------|---------------------------------|--|
| Sonde Serial Number                            | SCMS-CB 8284 |                                 |  |
| Current Casing Size                            | 4.50000 IN   |                                 |  |
| Casing Weight                                  | 11.6000 LB/F |                                 |  |
| Expected CBL Amplitude<br>in Free Pipe Section | 80 MV        | Minimum Sonic Amplitude         | 0.579149 MV (100% Cement)<br>1.55185 MV (80% Cement) |
|  |              | MAP Minimum Sonic Amplitude     | 4.32284 MV (100% Cement)<br>8.10244 MV (80% Cement)  |
| Master Calibration (Normalization)             |              | Before Calibration (Adjustment) |  |
| Date of Master Calibration                     | 21-JUN-2013  |                                 |  |
| CBL Correction Factor                          | 0.0743795    | CBL Adjustment Factor (CBAF)    | 1.0  |
| MAP 1 Correction Factor                        | 0.105721     | MAP Adjustment Factor (MPAF)    | 1.0  |
| MAP 2 Correction Factor                        | 0.132315     |                                 |  |
| MAP 3 Correction Factor                        | 0.146735     |                                 |  |
| MAP 4 Correction Factor                        | 0.109791     |                                 |  |
| MAP 5 Correction Factor                        | 0.114089     |                                 |  |
| MAP 6 Correction Factor                        | 0.110732     |                                 |  |
| MAP 7 Correction Factor                        | 0.116601     |                                 |  |
| MAP 8 Correction Factor                        | 0.0804110    |                                 |  |

#### Parameters

| DLIS Name | Description | Value |
|-----------|-------------|-------|
|-----------|-------------|-------|

|   |  |          |      |
|---|--|----------|------|
| SCMT-CB: Slim Cement Mapping Tool, 1-11/16 OD |  |          |      |
| BILI  | Bond Index Level for Zone Isolation                  | 0.8      |      |
| CB3D  | SCMT CBL 3 ft Peak Detection Mode                    | PEAK     |      |
| CB3G  | SCMT CBL 3 ft Peak Detection T0_Delay and Noise Gate | 224.559  | US   |
| CB3T  | SCMT CBL 3 ft Fixed Threshold Level                  | 20       | MV   |
| CB5D  | SCMT CBL 5 ft Peak Detection Mode                    | PEAK     |      |
| CB5G  | SCMT CBL 5 ft Peak Detection T0_Delay and Noise Gate | 338.559  | US   |
| CB5T  | SCMT CBL 5 ft Fixed Threshold Level                  | 20       | MV   |
| CBLG  | CBL Gate Width                                       | 40       | US   |
| CBRA  | CBL LQC Reference Amplitude in Free Pipe             | 80       | MV   |
| CMCF  | CBL Cement Type Compensation Factor                  | 1        |      |
| CMTC  | SCMT Slow Channel Multiplexer Mode                   | SCAN     |      |
| CMTM  | SCMT Operating Mode                                  | LOG      |      |
| CSCS  | SCMT Slow Channel Index                              | VCC      |      |
| CTHI  | Casing Thickness                                     | 0.255617 | IN   |
| DTF   | Delta-T Fluid  | 189      | US/F |
| FATT  | Acoustic Attenuation due to Fluid                    | 0        | DB/F |
| FCF   | CBL Fluid Compensation Factor                        | 0.924277 |      |
| GOBO  | Good Bond  | 1.55185  | MV   |
| MAPD  | SCMT MAP Peak Detection Mode                         | PEAK     |      |
| MAPG  | SCMT MAP Peak Detection T0_Delay and Noise Gate      | 167.559  | US   |
| MAPT  | SCMT MAP Fixed Threshold Level                       | 30       | MV   |
| MATT  | Maximum Attenuation                                  | 16.5449  | DB/F |
| MCCF  | MAP Cement Type Compensation Factor                  | 1        |      |
| MCI   | Minimum Cemented Interval for Isolation              | 1.25     | FT   |
| MMSA  | MAP Minimum Sonic Amplitude                          | 4.32284  | MV   |
| MSA   | Minimum Sonic Amplitude                              | 0.579149 | MV   |
| PEDE  | Peak Detection On/Off Switch in Playback             | OFF      |      |
| VDLG  | VDL Manual Gain                                      | 5        |      |
| ZCMT  | Acoustic Impedance of Cement                         | 6.8      | MRAY |
| System and Miscellaneous                      |  |          |      |
| CSIZ  | Current Casing Size                                  | 4.500    | IN   |
| CWEI  | Casing Weight  | 11.60    | LB/F |
| DFD   | Drilling Fluid Density                               | 8.40     | LB/G |
| DO  | Depth Offset for Playback                            | 0.0      | FT   |
| PP  | Playback Processing                                  | NORMAL   |      |
| TD  | Total Depth  | -50000   | FT   |

### Input DLIS Files

|         |                 |       |          |                   |           |           |
|---------|-----------------|-------|----------|-------------------|-----------|-----------|
| DEFAULT | SCMT_PSP_041PUP | FN:39 | PRODUCER | 26-Aug-2015 16:45 | 7831.0 FT | 1172.5 FT |
|---------|-----------------|-------|----------|-------------------|-----------|-----------|

### Output DLIS Files

|         |                 |       |          |                   |
|---------|-----------------|-------|----------|-------------------|
| DEFAULT | SCMT_PSP_042PUP | FN:40 | PRODUCER | 26-Aug-2015 16:52 |
|---------|-----------------|-------|----------|-------------------|

Company: **PetroPro Engineering, Inc**

**Schlumberger**

Well: **Winn 2**  
Field: **3rd Creek**  
County: **Adams**  
State: **CO**

CBL, CCL, GR, WTEP, WPRE