



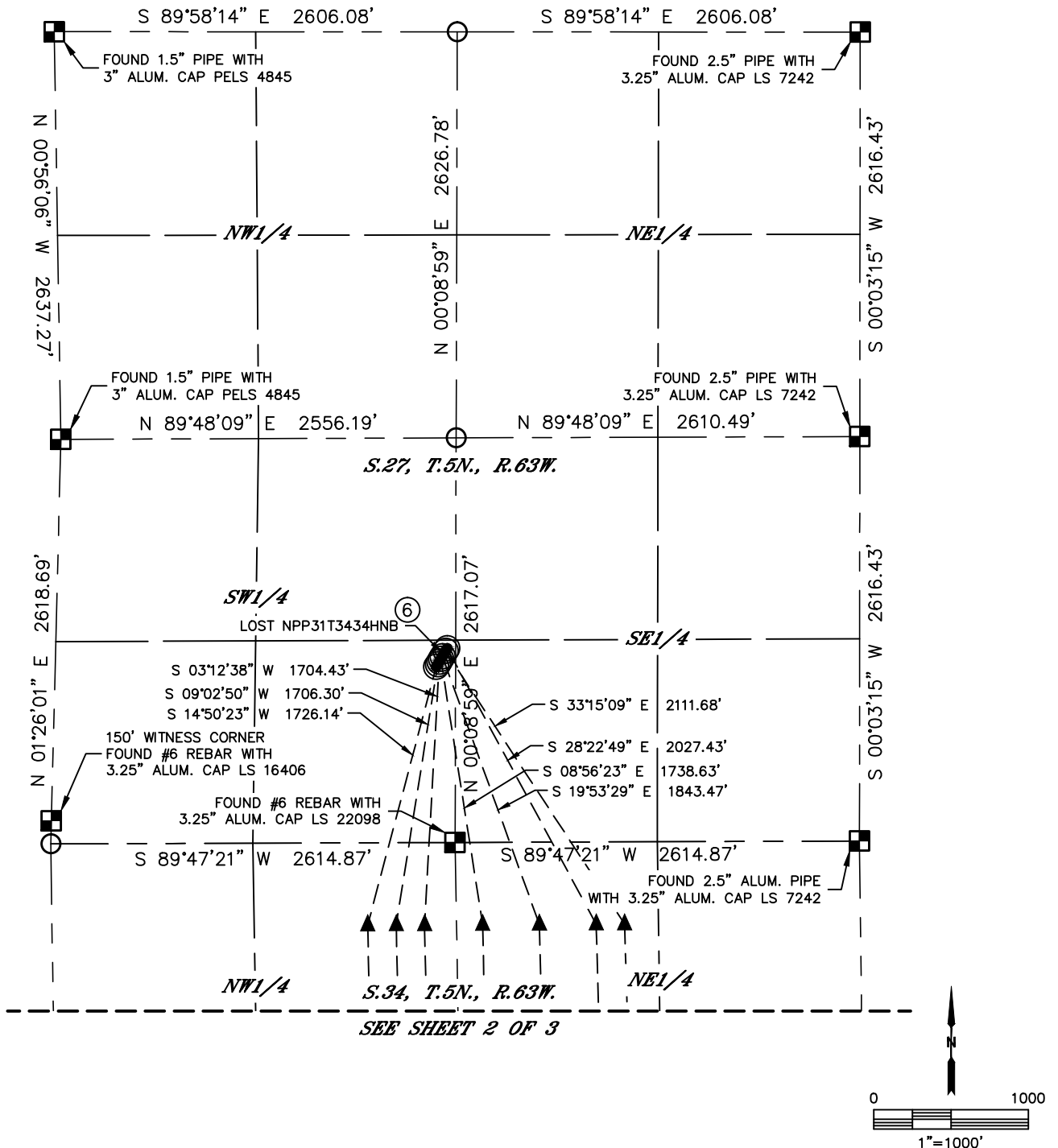
Lat40°, Inc. 6250 W. 10th Street, Unit 2, Greeley, CO 970-515-5294

## MULTI-WELL PLAN

**NORTH PLATTE T-27 PAD**

THIS MAP DOES NOT REPRESENT A BOUNDARY SURVEY

SECTION: 27  
TOWNSHIP: 5N  
RANGE: 63W  
6TH. P.M.  
WELD COUNTY, CO



#	WELL NAME	SHL FOOTAGE			SHL LAT°	SHL LONG °	SHL PDOP	SHL ELEV	SHL 1/4/1/4	
1	NORTH PLATTE 21-24-34HNB	1136	FSL	2463	FWL	40.36634	-104.42244	1.9	4541	SESW
2	NORTH PLATTE K21-024-34HC	1153	FSL	2473	FWL	40.36638	-104.42240	1.9	4541	SESW
3	NORTH PLATTE K21-024-34HNC	1171	FSL	2482	FWL	40.36643	-104.42236	1.9	4541	SESW
4	NORTH PLATTE K31-034-34HNB	1188	FSL	2492	FWL	40.36648	-104.42233	1.9	4541	SESW
5	NORTH PLATTE 31-34-34HNC	1205	FSL	2502	FWL	40.36652	-104.42229	1.9	4541	SESW
6	LOST NPP31T3434HNB	1222	FSL	2511	FWL	40.36657	-104.42225	1.9	4541	SESW
7	NORTH PLATTE P31-T34-34HC	1239	FSL	2521	FWL	40.36662	-104.42222	1.9	4541	SESW
8	NORTH PLATTE P31-T34-34HNB	1256	FSL	2531	FWL	NOT CALCD	NOT CALCD	1.9	4541	SESW



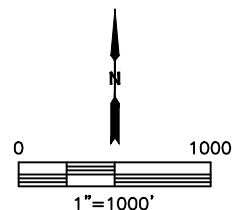
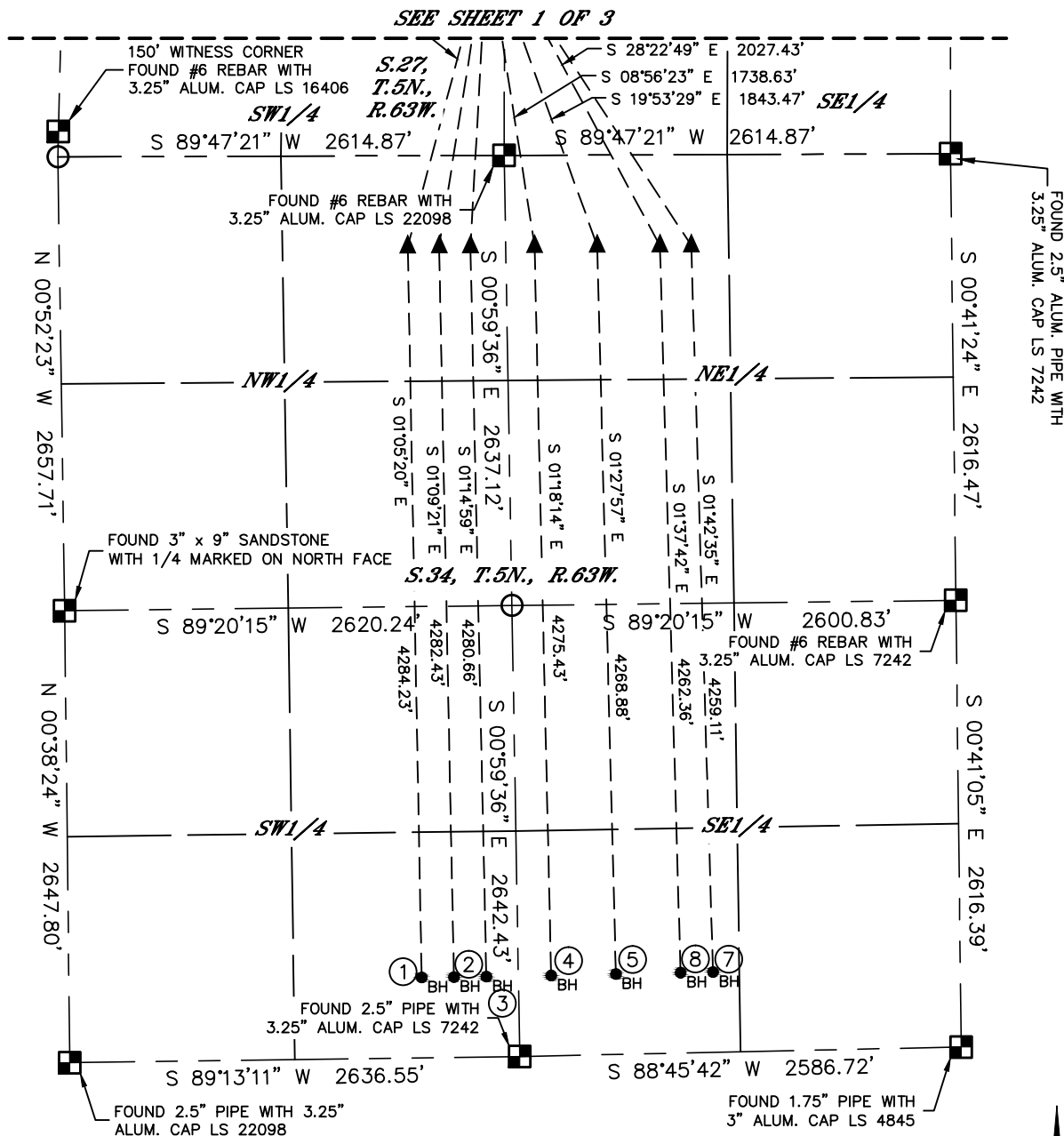
Lat40°, Inc. 6250 W. 10th Street, Unit 2, Greeley, CO 970-515-5294

# MULTI-WELL PLAN

## NORTH PLATTE T-27 PAD

THIS MAP DOES NOT REPRESENT A BOUNDARY SURVEY

SECTION: 27  
TOWNSHIP: 5N  
RANGE: 63W  
6TH. P.M.  
WELD COUNTY, CO



#	WELL NAME	SHL FOOTAGE				SHL LAT°	SHL LONG °	SHL PDOP	SHL ELEV	SHL 1/4/1/4
1	NORTH PLATTE 21-24-34HNB	1136	FSL	2463	FWL	40.36634	-104.42244	1.9	4541	SESW
2	NORTH PLATTE K21-O24-34HC	1153	FSL	2473	FWL	40.36638	-104.42240	1.9	4541	SESW
3	NORTH PLATTE K21-O24-34HNC	1171	FSL	2482	FWL	40.36643	-104.42236	1.9	4541	SESW
4	NORTH PLATTE K31-O34-34HNB	1188	FSL	2492	FWL	40.36648	-104.42233	1.9	4541	SESW
5	NORTH PLATTE 31-34-34HNC	1205	FSL	2502	FWL	40.36652	-104.42229	1.9	4541	SESW
6	LOST NPP31T3434HNB	1222	FSL	2511	FWL	40.36657	-104.42225	1.9	4541	SESW
7	NORTH PLATTE P31-T34-34HC	1239	FSL	2521	FWL	40.36662	-104.42222	1.9	4541	SESW
8	NORTH PLATTE P31-T34-34HNB	1256	FSL	2531	FWL	NOT CALCD	NOT CALCD	1.9	4541	SESW

SHEET 2 OF 3

DATE: rev8/26/2015  
PROJECT#: 2014227



Lat40°, Inc. 6250 W. 10th Street, Unit 2, Greeley, CO 970-515-5294

# MULTI-WELL PLAN

**NORTH PLATTE T-27 PAD**

SECTION: 27  
TOWNSHIP: 5N  
RANGE: 63W  
6TH. P.M.  
WELD COUNTY, CO

