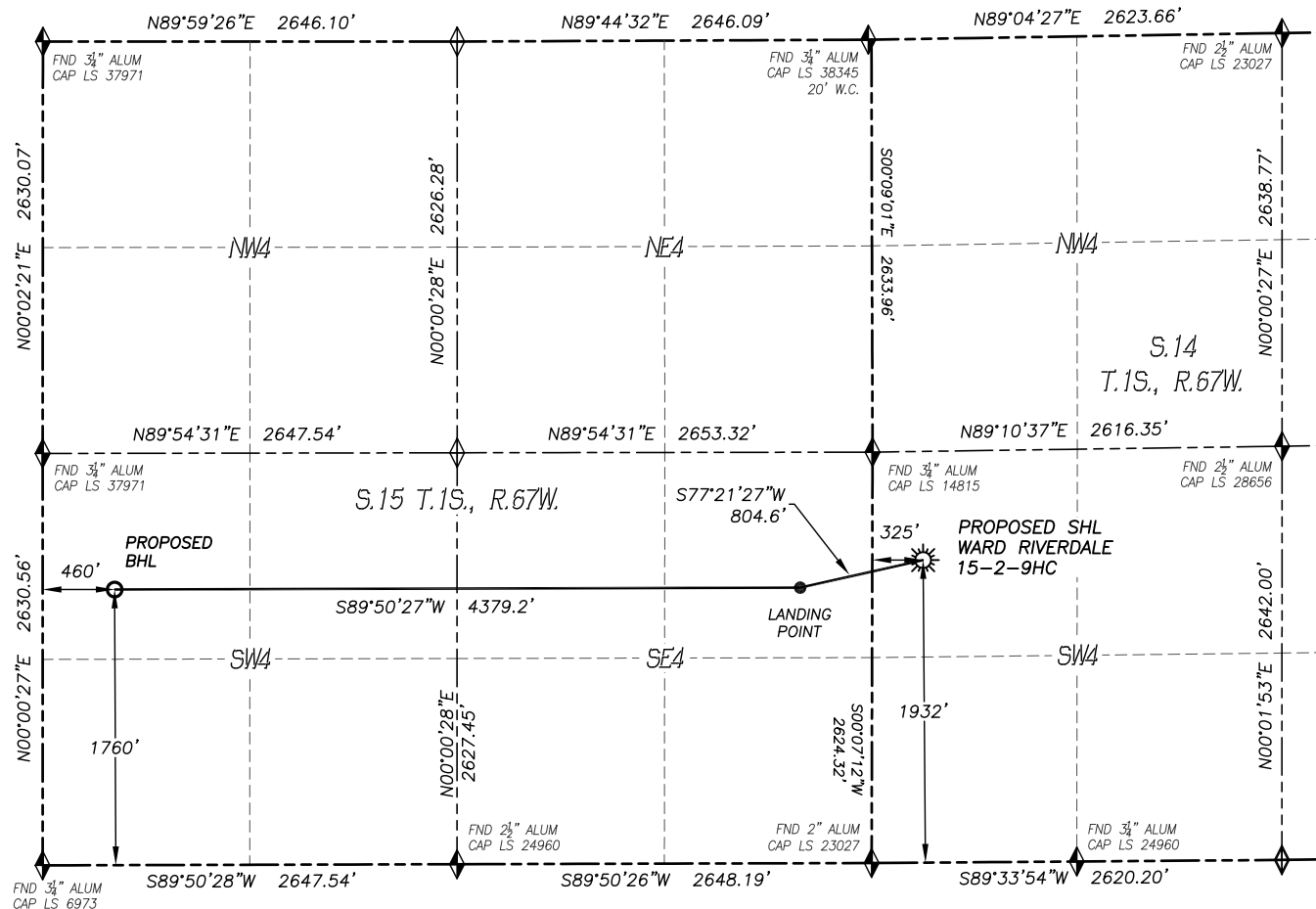


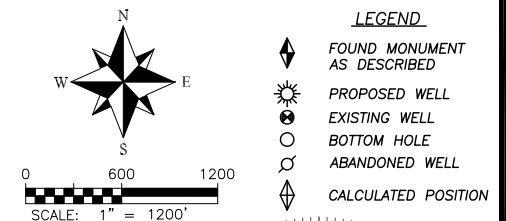
DALEY LAND SURVEYING, INC. PARKER, CO. 80134 303 953 9841
WELL LOCATION CERTIFICATE – WARD RIVERDALE 15-2-9HC
 SECTION 14, TOWNSHIP 1 SOUTH, RANGE 67 WEST OF THE 6TH PRINCIPAL MERIDIAN



NAD 83 LATITUDE AND LONGITUDE	
<u>SURFACE LOCATION:</u>	
LATITUDE:	N39.96299°
LONGITUDE:	W104.86426°
ELEVATION:	5112'
FOOTAGE:	1932' FSL, 325' FWL
QTR/QTR:	NW4/SW4
PDOP:	1.7
<u>LANDING POINT:</u>	
LATITUDE:	N39.96250°
LONGITUDE:	W104.86706°
FOOTAGE:	1760' FSL, 460' FEL OF SEC.15-T1S-R67W
<u>BOTTOM HOLE:</u>	
LATITUDE:	N39.96247°
LONGITUDE:	W104.88268°
FOOTAGE:	1760' FSL, 460' FWL OF SEC.15-T1S-R67W

NEAREST CULTURAL ITEMS:

- | | |
|--------------------------------|----------|
| 1. BUILDING: | 423'± NE |
| 2. BUILDING UNIT: | 566'± W |
| 3. HIGH OCC. BLD. UNIT: | 5280'+ |
| 4. DES. OUTSIDE ACTIVITY AREA: | 5280'+ |
| 5. PUBLIC ROAD: | 671'± NW |
| 6. ABOVE GROUND UTILITY: | 306'± W |
| 7. RAILROAD: | 5280'+ |
| 8. PROPERTY LINE: | 325'± W |



LEGEND

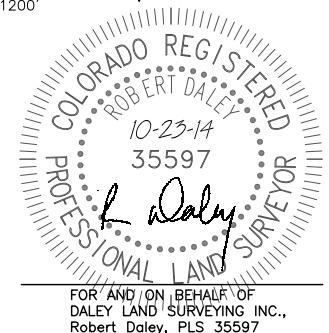
- ◆ FOUND MONUMENT AS DESCRIBED
- ☀ PROPOSED WELL
- ⊙ EXISTING WELL
- BOTTOM HOLE
- ⊗ ABANDONED WELL
- ◇ CALCULATED POSITION

IN ACCORDANCE WITH A REQUEST FROM WARD PETROLEUM., DALEY LAND SURVEYING, INC. HAS DETERMINED THE SURFACE LOCATION OF THE WARD RIVERDALE 15-2-9HC WELL TO BE 1932' FSL, 325' FWL, AS MEASURED AT NINETY (90) DEGREES FROM THE SECTION LINES OF SECTION 14, TOWNSHIP 1 SOUTH, RANGE 67 WEST, AND THE BOTTOM HOLE LOCATION TO BE 1760' FSL, 460' FWL, AS MEASURED AT NINETY (90) DEGREES FROM THE SECTION LINES OF SECTION 15, TOWNSHIP 1 SOUTH, RANGE 67 WEST, OF THE 6TH PRINCIPAL MERIDIAN, ADAMS COUNTY, COLORADO.

I HEREBY STATE THAT THIS WELL LOCATION CERTIFICATE WAS PREPARED BY ME OR UNDER MY DIRECT SUPERVISION, THAT THE WORK WAS COMPLETED ON 10/2/2014 FOR AND ON BEHALF OF WARD PETROLEUM, AND THAT THIS MAP DOES NOT REPRESENT A BOUNDARY SURVEY, IT IS NOT A LAND SURVEY PLAT OR AN IMPROVEMENT SURVEY PLAT AND IT IS NOT TO BE RELIED UPON FOR THE ESTABLISHMENT OF FENCE, BUILDING OR OTHER FUTURE IMPROVEMENT LINES.

NOTES:

- BEARINGS FOR THIS MAP ARE ASSUMED AND BASED UPON GPS OBSERVATIONS MADE BETWEEN MONUMENTS LOCATED AT THE SOUTHWEST CORNER AND WEST QUARTER CORNER OF SECTION 14, T.1S., R.67W.
- HORIZONTAL DATUM IS NAD83.
- VERTICAL DATUM IS NAVD88 AND ORIGINATES FROM THE LOCAL C.O.R.S. NETWORK, UTILIZING THE GEOID09 MODEL.
- SEE LOCATION DRAWING FOR VISIBLE IMPROVEMENTS WITHIN 500' OF PROPOSED DISTURBED AREA.
- SURFACE USE: NON AGRICULTURAL.
- INST. OPERATOR: TREVOR DALEY



FOR AND ON BEHALF OF
 DALEY LAND SURVEYING INC.,
 Robert Daley, PLS 35597