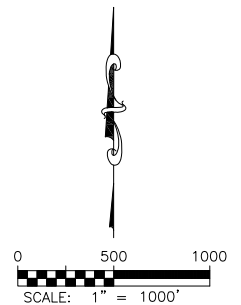
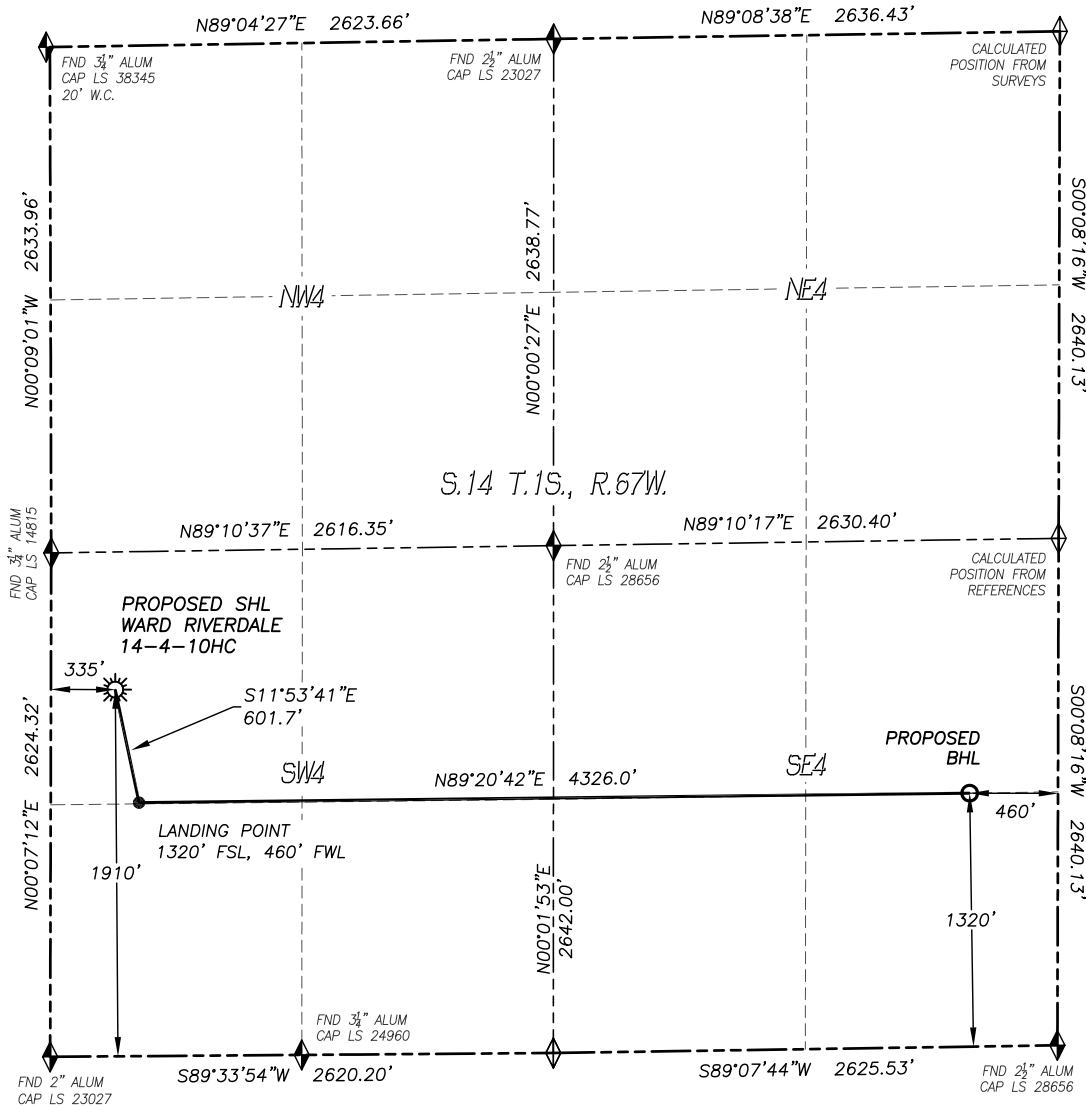


WELL LOCATION CERTIFICATE

WARD RIVERDALE 14-4-10HC

SECTION 14, TOWNSHIP 1 SOUTH, RANGE 67 WEST OF THE 6TH PRINCIPAL MERIDIAN



- LEGEND**
- ◆ FOUND MONUMENT AS DESCRIBED
 - ☀ PROPOSED WELL
 - ⊙ EXISTING WELL
 - BOTTOM HOLE
 - ⊗ ABANDONED WELL
 - ◆ CALCULATED POSITION

IN ACCORDANCE WITH A REQUEST FROM WARD PETROLEUM, DALEY LAND SURVEYING, INC. HAS DETERMINED THE SURFACE LOCATION OF THE WARD RIVERDALE 14-4-10HC WELL TO BE 1910' FSL, 335' FWL, AND THE BOTTOM HOLE LOCATION TO BE 1320' FSL, 460' FEL, AS MEASURED AT NINETY (90) DEGREES FROM THE SECTION LINES OF SECTION 14, TOWNSHIP 1 SOUTH, RANGE 67 WEST OF THE 6TH P.M., ADAMS COUNTY, COLORADO.

I HEREBY STATE THAT THIS WELL LOCATION CERTIFICATE WAS PREPARED BY ME OR UNDER MY DIRECT SUPERVISION, THAT THE WORK WAS COMPLETED ON 10/2/2014 FOR AND ON BEHALF OF WARD PETROLEUM AND THAT THIS MAP DOES NOT REPRESENT A BOUNDARY SURVEY, IT IS NOT A LAND SURVEY PLAT OR AN IMPROVEMENT SURVEY PLAT AND IT IS NOT TO BE RELIED UPON FOR THE ESTABLISHMENT OF FENCE, BUILDING OR OTHER FUTURE IMPROVEMENT LINES.

NOTES:

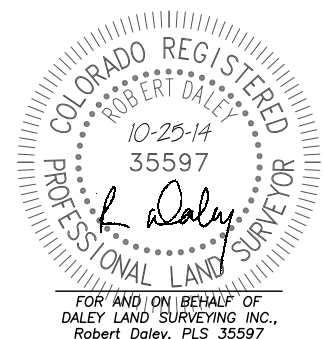
- 1) BEARINGS FOR THIS MAP ARE ASSUMED AND BASED UPON GPS OBSERVATIONS MADE BETWEEN MONUMENTS LOCATED AT THE SOUTHWEST CORNER AND WEST QUARTER CORNER OF SECTION 14, T.1S., R.67W.
- 2) HORIZONTAL DATUM IS NAD83.
- 3) VERTICAL DATUM IS NAVD88 AND ORIGINATES FROM THE LOCAL C.O.R.S. NETWORK, UTILIZING THE GEOID12A MODEL.
- 4) SEE LOCATION DRAWING FOR VISIBLE IMPROVEMENTS WITHIN 500' OF PROPOSED DISTURBED AREA.
- 5) SURFACE USE: NON AGRICULTURAL.
- 6) INST. OPERATOR: TREVOR DALEY.

NEAREST CULTURAL ITEMS:

- | | |
|--------------------------------|----------|
| 1. BUILDING: | 419'± NE |
| 2. BUILDING UNIT: | 576'± W |
| 3. HIGH OCC. BLD. UNIT: | 5280'± |
| 4. DES. OUTSIDE ACTIVITY AREA: | 5280'± |
| 5. PUBLIC ROAD: | 695'± NW |
| 6. ABOVE GROUND UTILITY: | 315'± W |
| 7. RAILROAD: | 5280'± |
| 8. PROPERTY LINE: | 335'± W |

NAD 83 LATITUDE AND LONGITUDE

SURFACE LOCATION:		LANDING POINT:	
LATITUDE:	N39.96293°	LATITUDE:	N39.96131°
LONGITUDE:	W104.86423°	LONGITUDE:	W104.86379°
ELEV:	5113'	BOTTOM HOLE:	
PDOP:	1.7	LATITUDE:	N39.96145°
QTR/QTR:	NW4/SW4	LONGITUDE:	W104.84836°



FOR AND ON BEHALF OF
DALEY LAND SURVEYING INC.,
Robert Daley, PLS 35597