

LEGEND:

PROPOSED LOCATION

EOG RESOURCES, INC.

RANDALL CREEK 30 SESE
 ON EXISTING #3-30H PAD
 SE 1/4 SE 1/4, SECTION 30, T12N, 62W, 6th P.M.
 WELD COUNTY, COLORADO

DRAWN BY: J.A.

DATE DRAWN: 01-06-15

SCALE: 1:100,000

REVISED: 04-13-15 R.C.

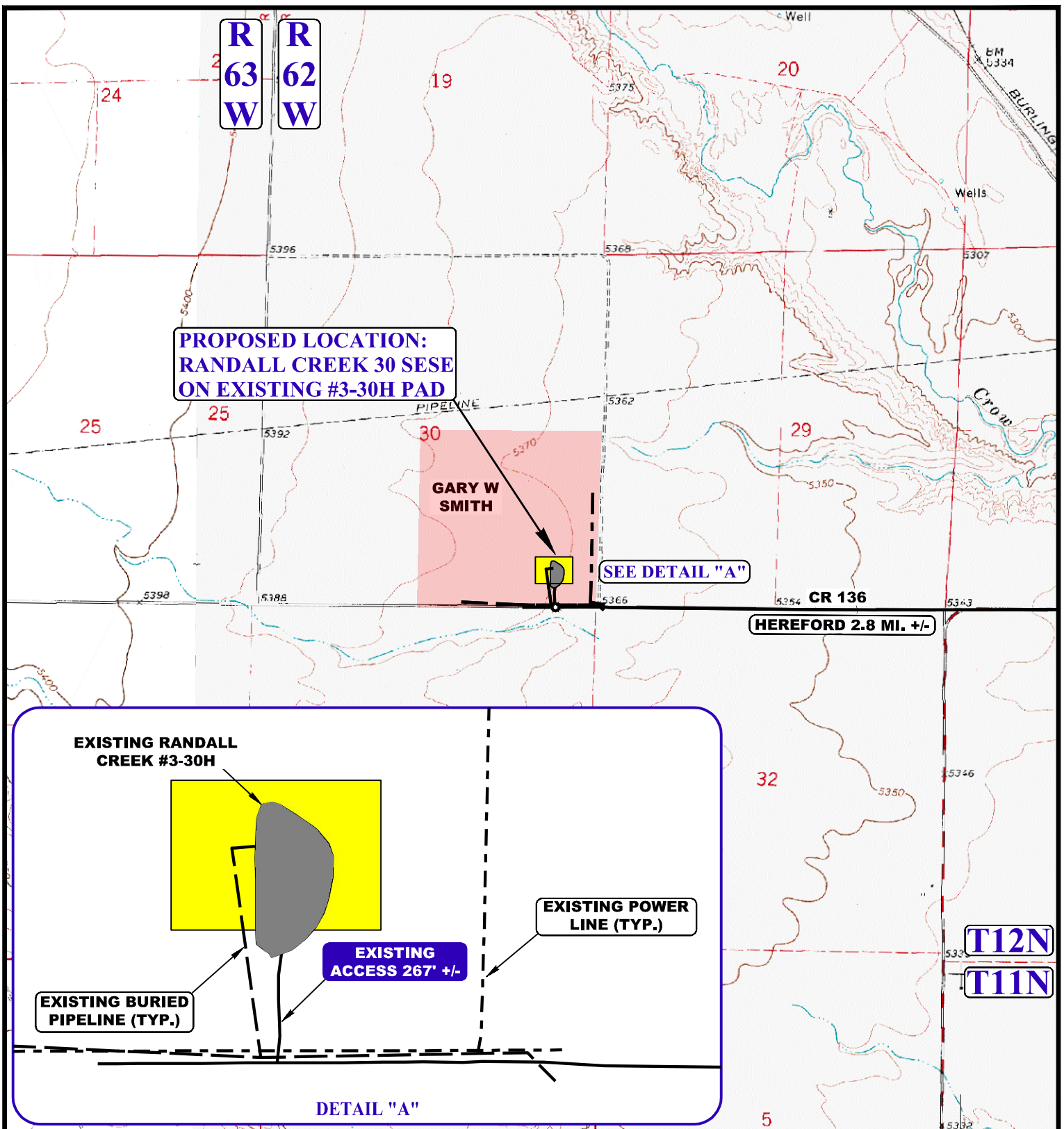
ACCESS ROAD MAP

TOPO A

UELS, LLC

Corporate Office * 85 South 200 East
 Vernal, UT 84078 * (435) 789-1017





NOTE: PARCEL DATA SHOWN HAS BEEN OBTAINED FROM VARIOUS SOURCES AND SHOULD BE USED FOR MAPPING, GRAPHIC AND PLANNING PURPOSES ONLY. NO WARRANTY IS MADE BY UINTAH ENGINEERING AND LAND SURVEYING (UELS) FOR ACCURACY OF THE PARCEL DATA.

LEGEND:

- EXISTING ROAD
- - - EXISTING BURIED PIPELINE
- - - EXISTING POWER LINE

EOG RESOURCES, INC.

**RANDALL CREEK 30 SESE
ON EXISTING #3-30H PAD
SE 1/4 SE 1/4, SECTION 30, T12N, 62W, 6th P.M.
WELD COUNTY, COLORADO**

DRAWN BY: J.A.

DATE DRAWN: 01-06-15

SCALE: 1" = 2000'

REVISED: 04-13-15 R.C.

ACCESS ROAD MAP

TOPO B



UELS, LLC
Corporate Office * 85 South 200 East
Vernal, UT 84078 * (435) 789-1017

