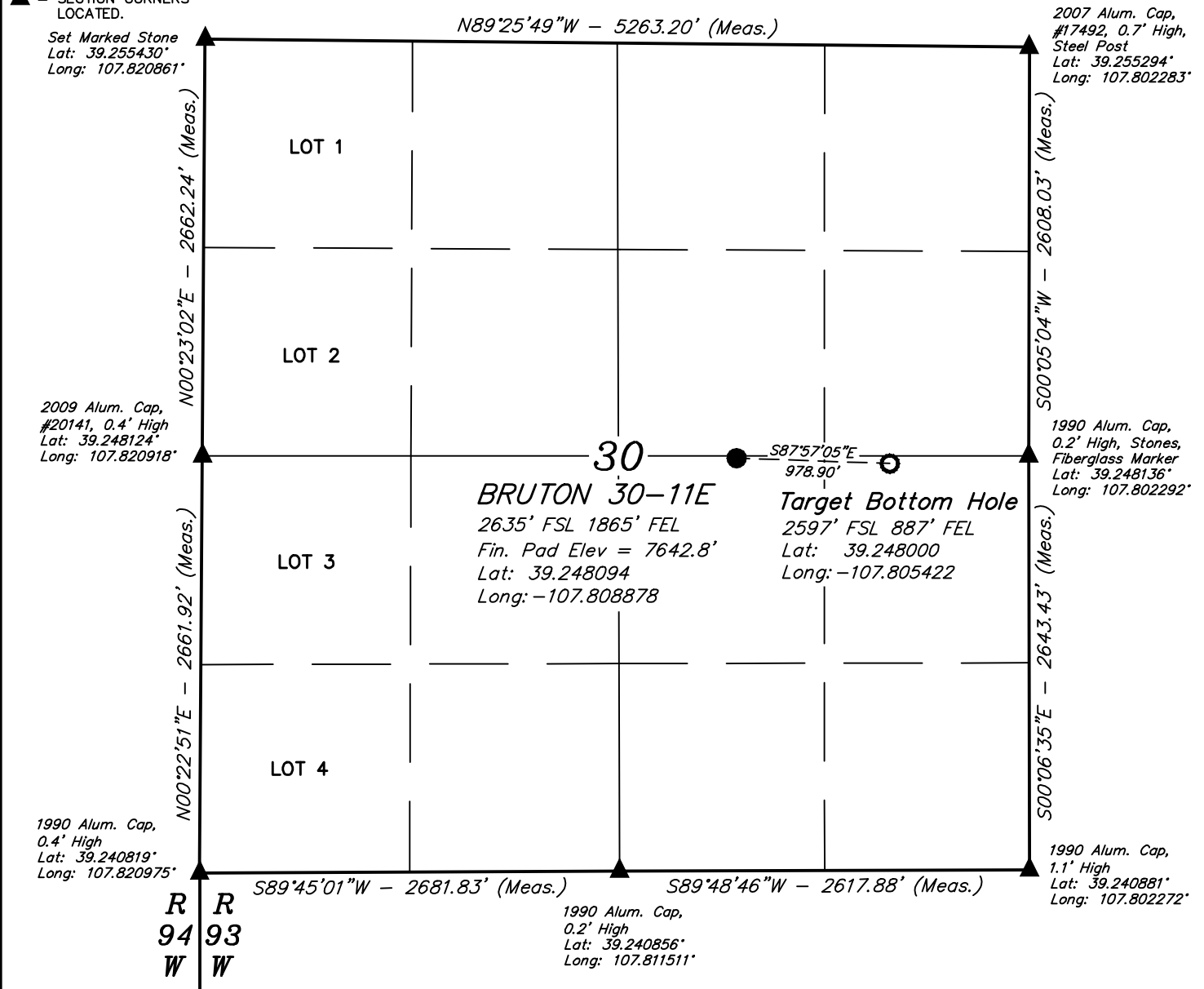


**LEGEND:**

- = PROPOSED WELLHEAD.  
 ○ = TARGET BOTTOM HOLE.  
 ▲ = SECTION CORNERS LOCATED.

*T9S, R93W, 6th P.M.*

**NOTE DISTANCE TO NEAREST:**

**BUILDING:** OVER A MILE  
**BUILDING UNIT:** OVER A MILE  
**HOB:** OVER A MILE  
**DOAA:** OVER A MILE  
**PUBLIC ROAD:** OVER A MILE  
**ABOVE GROUND UTILITY:** N08°E 4710'  
**RAILROAD:** OVER A MILE  
**PROPERTY LINE:** S58°W 2464'

PDOP = 1.7

**NOTE:**

- 1.) All latitudes and longitudes are given in NAD 83 coordinates.
- 2.) Distances to nearest section lines are measured perpendicularly.

**CERTIFICATE**  
 THIS IS TO CERTIFY THAT THE ABOVE PLAT WAS PREPARED FROM FIELD NOTES OF ACTUAL SURVEYS MADE BY ME OR UNDER MY SUPERVISION AND THAT THE SAME ARE TRUE AND CORRECT TO THE BEST OF MY KNOWLEDGE AND BELIEF.



REGISTERED LAND SURVEYOR  
 REGISTRATION NO. 38130  
 STATE OF COLORADO 04-15

**BASIS OF BEARINGS**  
 BASIS OF BEARINGS IS A G.P.S. OBSERVATION

**BASIS OF ELEVATION**

BENCH MARK (19 RDS) LOCATED IN THE SE 1/4 OF SECTION 16, T9S, R93W, 6th P.M., TAKEN FROM THE SOUTH MAMM PEAK, QUADRANGLE, COLORADO, 7.5 MINUTE QUAD. (TOPOGRAPHIC MAP) PUBLISHED BY THE UNITED STATES DEPARTMENT OF THE INTERIOR, GEOLOGICAL SURVEY. SAID ELEVATION IS MARKED AS BEING 7252 FEET.



**PICEANCE ENERGY, LLC**

**BRUTON 30-11E**  
**NW 1/4 SE 1/4, SECTION 30, T9S, R93W, 6th P.M.**  
**MESA COUNTY, COLORADO**

SURVEYED BY: BRADEN BOX, B.B.	DATE: 03-27-15
DRAWN BY: M.D.	DATE DRAWN: 05-04-15
SCALE: 1" = 1000'	REVISED: 00-00-00

**WELL LOCATION PLAT**



**UELS, LLC**  
 Corporate Office \* 85 South 200 East  
 Vernal, UT 84078 \* (435) 789-1017