



AMERICAN RESOURCES

**COMPANY**  
**MANAGEMENT CORPORATION**

WEI | BG #26-2

FIELD BEAR GULCH

County RIO BLANCO State COLO.

**COMPANY** AMERICAN RESOURCES MANAGEMENT CORP.

WELL \_\_\_\_\_ BG #26-2

FIELD BEAR GULCH

COUNTY RIO BLANCO STATE COLORADO

Location	Other Services:
----------	-----------------

Sec. 26 Twp 5S Rge 101W

Permanent Datum	GROUND LEVEL	Elev. 8791	Elev.: K.B. 8808.5
Log Measured From	KELLY BUSHING	Ft. Above Perm. Datum	D.F.
Drilling Measured From	KELLY BUSHING		G.L. 8791

Run No.	ONE		
Date & Time Survey	8-5-81		
Date & Time Cementing	----		
Type Cementing Operation	LONG STRING		
Depth Driller	8720'		
Depth Welex	8694'		
Logged Interval	8686'	to 8000'	to
Casing Driller	5 $\frac{1}{2}$ "	@ TD	@
Float Collar—D.V. Tool	----		
Squeeze Depth	----		
Amount & Type Cement	----		
Amount & Type Admix	----		
Type Fluid in Hole	KCL FLUID		
Fluid Level	600'		
Salinity PPM Cl	----		
Weight lb/gal—Vis.	----		
Approx. Logged Cem. Top	----		
Calculated Cement Top	----		
Max. Hole Temperature	256	°F.	°F.
Tool No.	102A & 307		
Spacing Recorded	4'		
Equipment—Location	2887 VERNAL		
Recorded by	HIGGINSON		
Witnessed by	MR. HEBERTSON		

Fold Here

## CASING RECORD

[illegible]

Service Ticket No. 106712  
HOLE LOG.

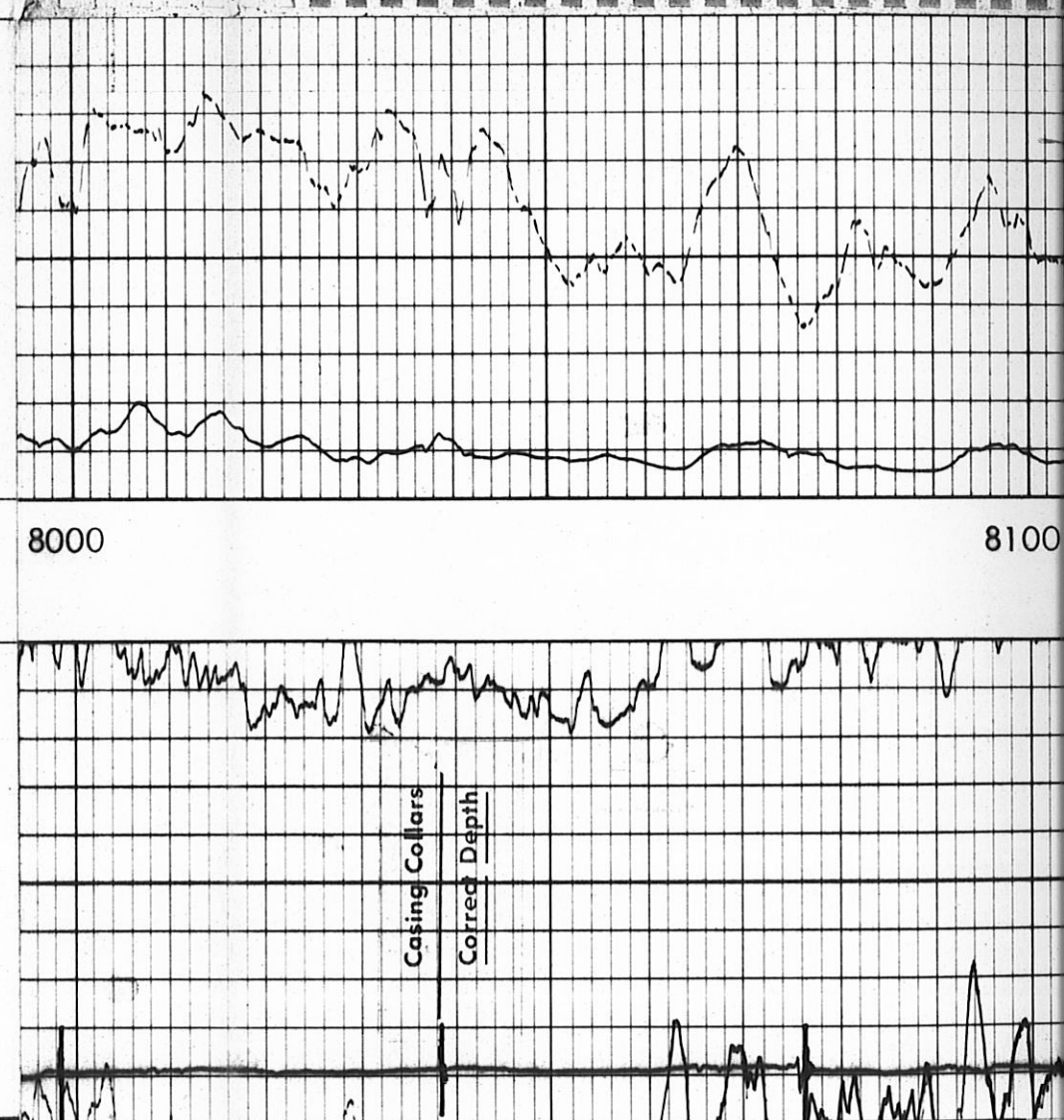
Remarks

MICRO-SEISMOGRAM LOG 2' DEEP OF OPEN

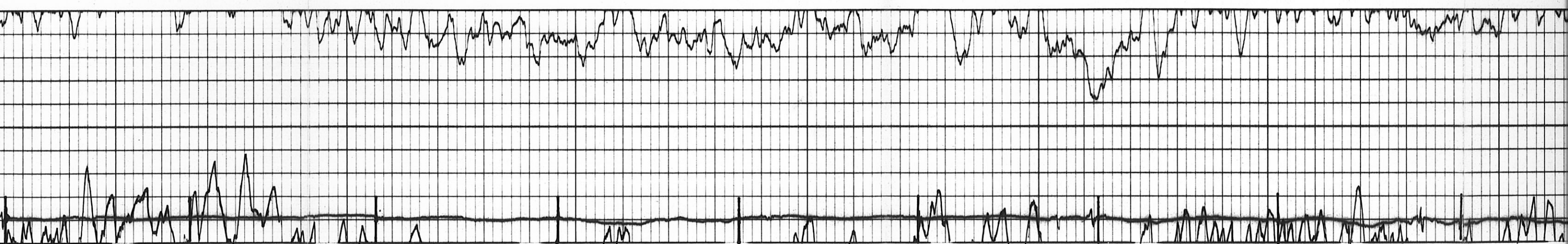
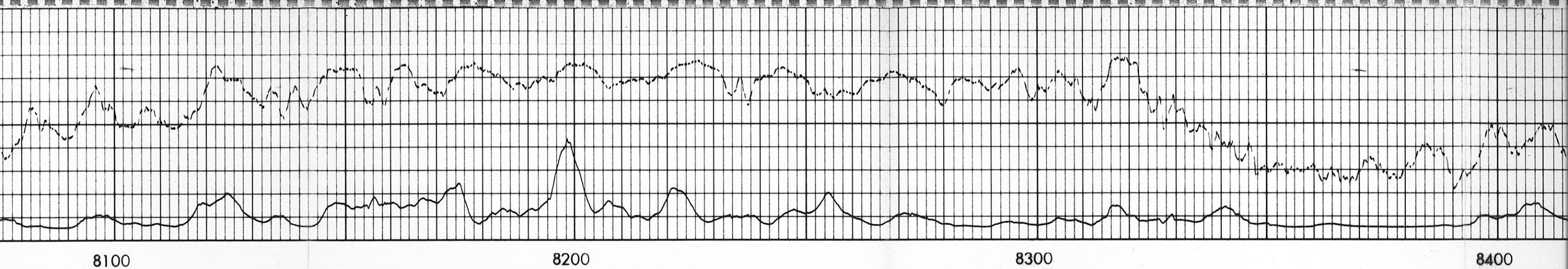
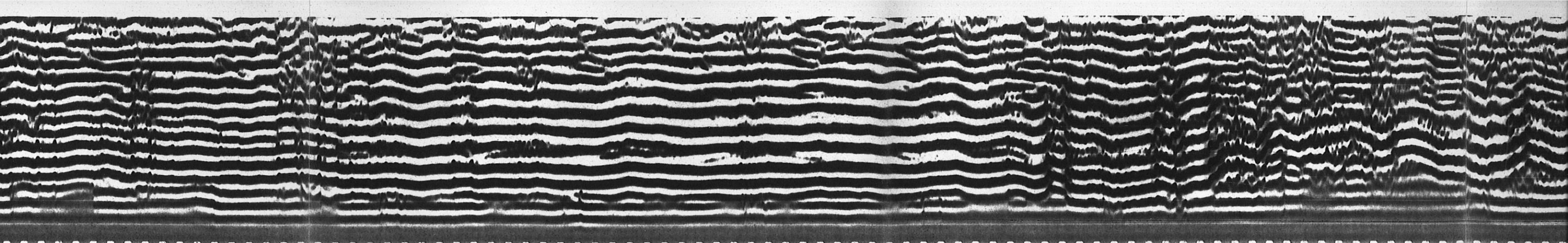
Welex does not guarantee the accuracy of any interpretation of log data, conversion of log data to physical rock parameters, or recommendations which may be given by Welex personnel or which may appear on the log or in any other form. Any user of such data, interpretations, conversions, or recommendations agrees that Welex is not responsible, except where due to gross negligence or wilful misconduct, for any loss, damages, or expenses resulting from the use thereof.

<b>GAMMA</b> API Gamma Ray Units		DEPTH		AMPLITUDE	MICRO-SEISMOGRAM® LOG
0	150			PIPE	
150	300			FORMATION	200 u sec. 1200

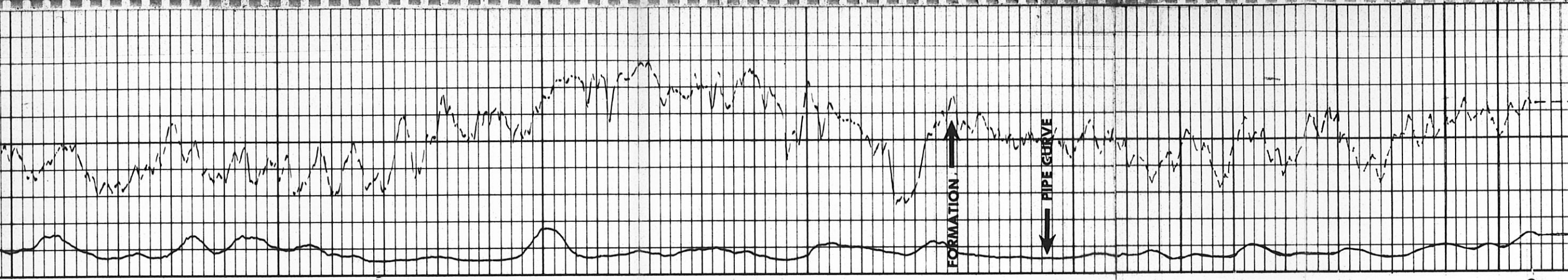
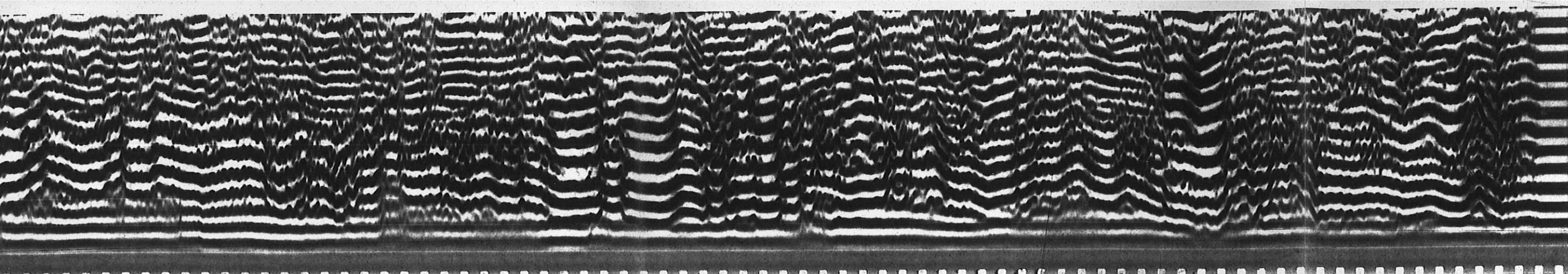
GATES



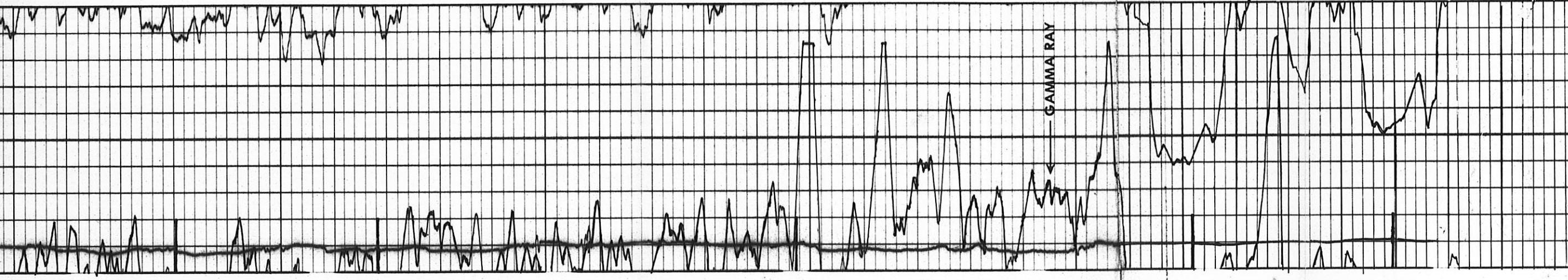








400 8500 8600 TD LOGGED



MICRO-SEISMOGRAM® LOG	
FORMATION	200 u sec.
PIPE	1200
AMPLITUDE	
GAMMA	
API Gamma Ray Units	
0	150
150	300



AMERICAN RESOURCES MANAGEMENT CORPORATION

BG #26-2

BEAR GULCH

RIO BLANCO COUNTY COLORADO

SEC. 26 5S 101W

T.D. LOGGED 8686

T.D. DRILLER 8720

T.D. WELEX 8694

